

ADDISON CIRCLE OFFICE BUILDING

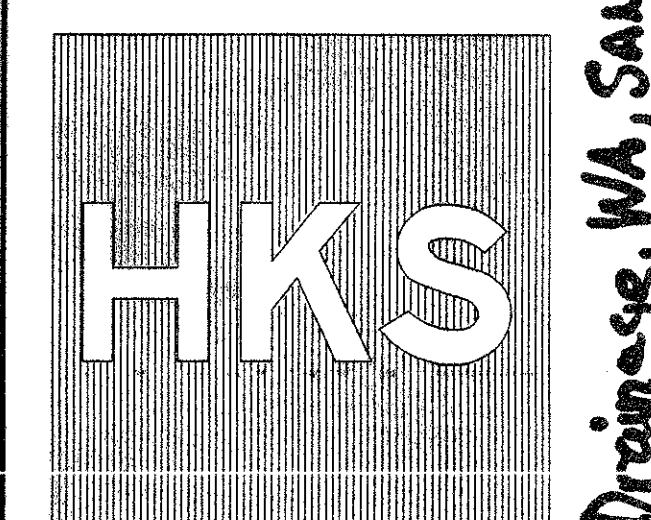
ADDISON TEXAS

15601 Dallas Hwy

PROGRESS DATA TRACK, Inc.
CONSULTING ENGINEERS
Civil & Mechanical Engineering Services
1000 West Loop South, Suite 1000, Dallas, Texas 75241
Tel: (214) 766-1100

CHAMPION TOWERS RECORD SET
Drainage, WA, SAN-STB. (3)

HUITT-ZOLLARS, INC.
3131 McKinney Ave., Suite 600
Dallas, TX 75204 214-871-3311



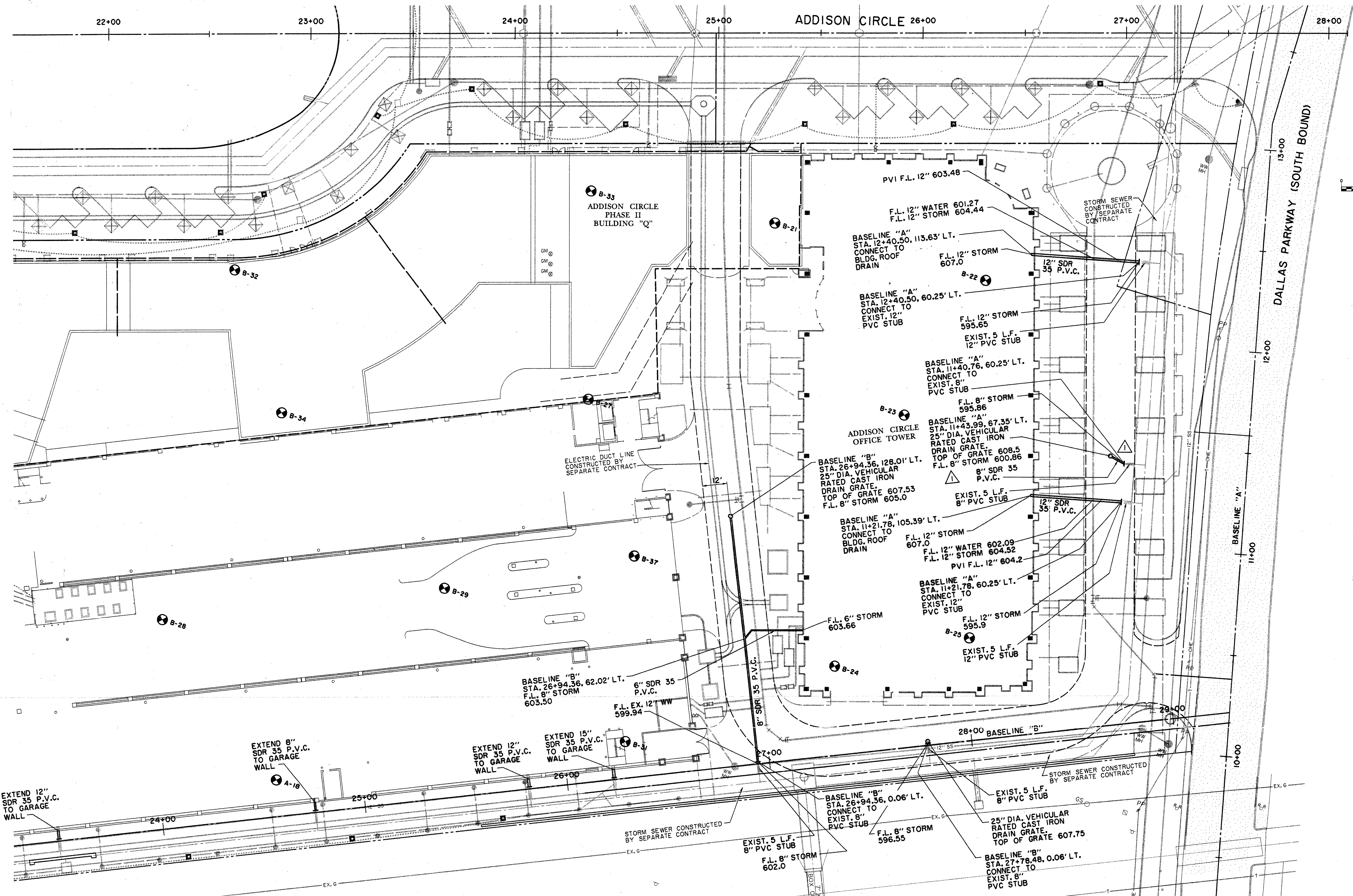
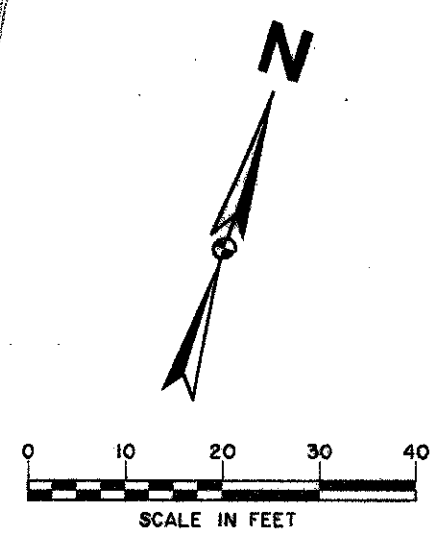
HKS Inc., Architects-Engineers-Planners
700 N. Pearl, Suite 1100, LB 307
Dallas, Texas 75201-7485 (214) 946-5999

Job No: 5494
ISSUED FOR CONSTRUCTION

15 OCT. 1997

RECORD DRAWING
12/4/98
SHIFTED INLET
LOCATION 1/16/98

Revisions:
Date:
Sheet Title:
DRAINAGE PLAN
Sheet No: B18-12
C6



RECORD DRAWING:
THIS DRAWING HAS BEEN MODIFIED FROM THE ORIGINAL DESIGN DRAWINGS TO REFLECT THE FIELD CHANGES THAT OCCURRED DURING CONSTRUCTION WHICH WERE DOCUMENTED AND FURNISHED TO THE ENGINEER BY THE CONTRACTOR. BASED ON THIS INFORMATION AND THE ENGINEER'S OBSERVATION OF CERTAIN CONSTRUCTION ACTIVITIES, TO THE BEST OF THE ENGINEER'S KNOWLEDGE AND BELIEF, THE PROJECT IS CONSTRUCTED IN CONFORMANCE WITH THE PLANS AND SPECIFICATIONS AND WILL FUNCTION AS DESIGNED.

BENCHMARKS:
BM#5
"I" CUT AT NORTHWEST CORNER OF NORTH HDWL. OF 7'X7' BOX CULVERT UNDER RAILROAD, 150' WEST OF DALLAS PARKWAY SOUTHBOUND. ELEV. 610.49
BM#6
"I" CUT AT CENTER FRONT OF 18" REC. INLET, SECOND INLET NORTH OF RAILROAD TRACKS ON THE WEST SIDE OF DALLAS PARKWAY SOUTHBOUND. ELEV. 605.67

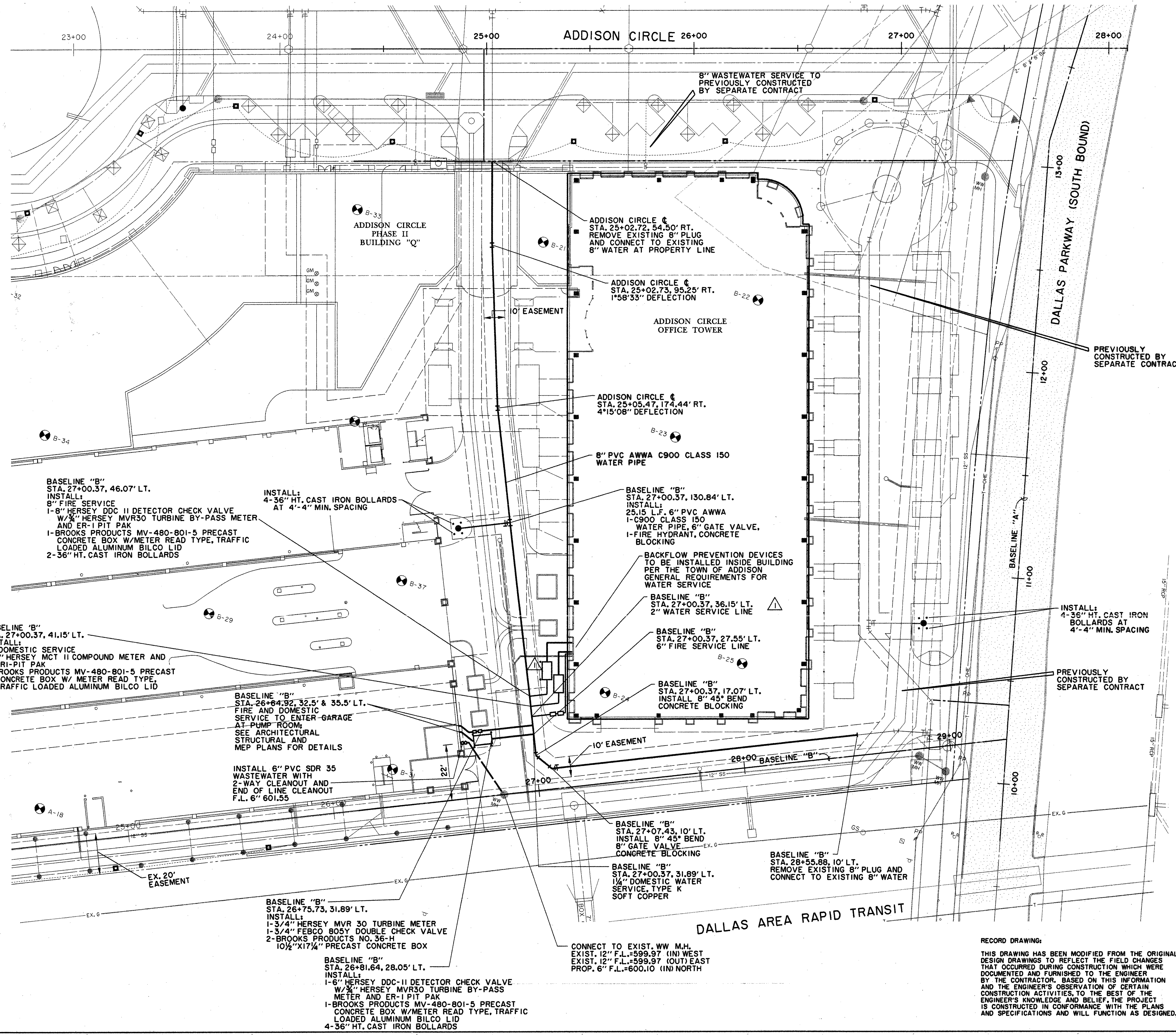
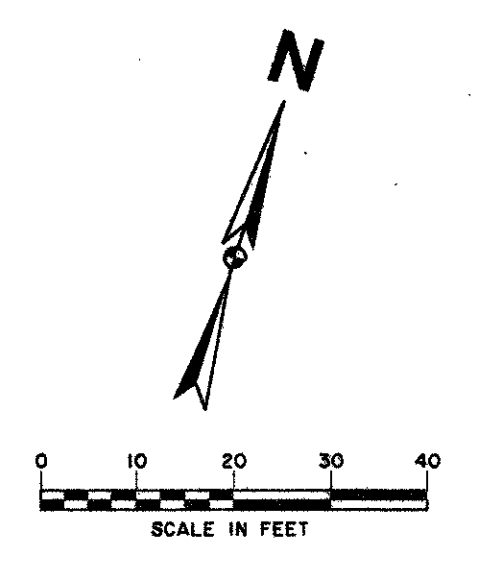
THE SEAL APPEARING ON THIS DOCUMENT WAS AUTHORIZED BY DAVID E. MEYERS, P.E. 81512 ON DEC. 4, 1998.



PLANNING AND DESIGN SERVICES, INC. 1000 WEST LOOP SOUTH, SUITE 1000, DALLAS, TEXAS 75241
P.L. MEYERS, P.E. 81512
DAVID E. MEYERS, P.E. 81512
DATE: 12/14/98

3/16/98-12/14/98-12/14/98
20 JUN 97

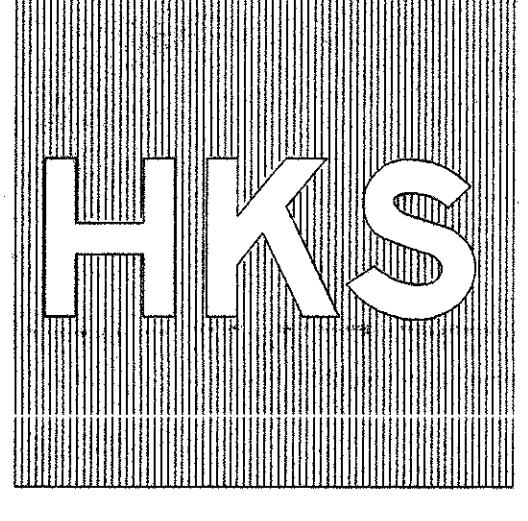
ADDISON CIRCLE
OFFICE BUILDING
ADDISON TEXAS



ALL INFORMATION ON THIS DRAWING IS THE PROPERTY OF HKS, INC. AND IS NOT TO BE REPRODUCED OR TRANSMITTED IN ANY FORM OR BY ANY MEANS, ELECTRONIC OR MECHANICAL, INCLUDING PHOTOCOPYING, RECORDING, OR BY ANY INFORMATION STORAGE AND RETRIEVAL SYSTEM, WITHOUT THE WRITTEN PERMISSION OF HKS, INC.

BROOKS DAVIS SMITH, Inc.
 Consulting Engineers
 2001 Ross Avenue, Suite 1000
 Dallas, Texas 75201-2818
 (214) 750-1200

HUITT-ZOLLARS, INC.
 3131 McKinney Ave., Suite 600
 Dallas, TX 75204 (214) 871-3111



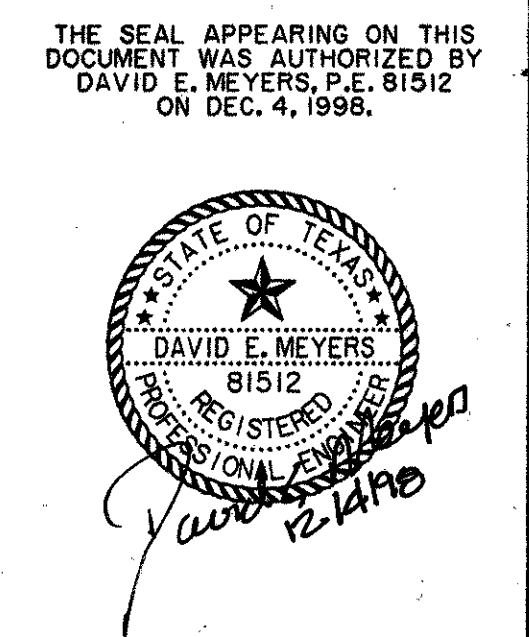
HKS Inc. Architects-Engineers-Planners
 700 W. Peach, Suite 1100, LB 307
 Dallas, Texas 75201-7465 (214) 969-5599

Job No: 5494
 ISSUED FOR CONSTRUCTION

15 OCT. 1997

RECORD DRAWING
 12/4/98
 ADDED COOLING TOWER
 SERVICE LINE; SHIFTED
 VAULTS & BOLLARDS
 1/16/98

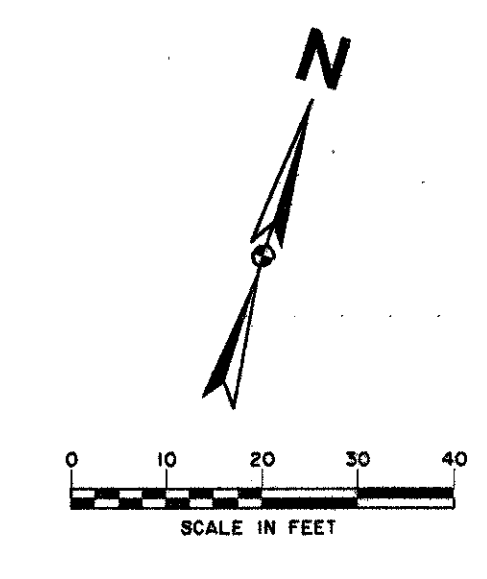
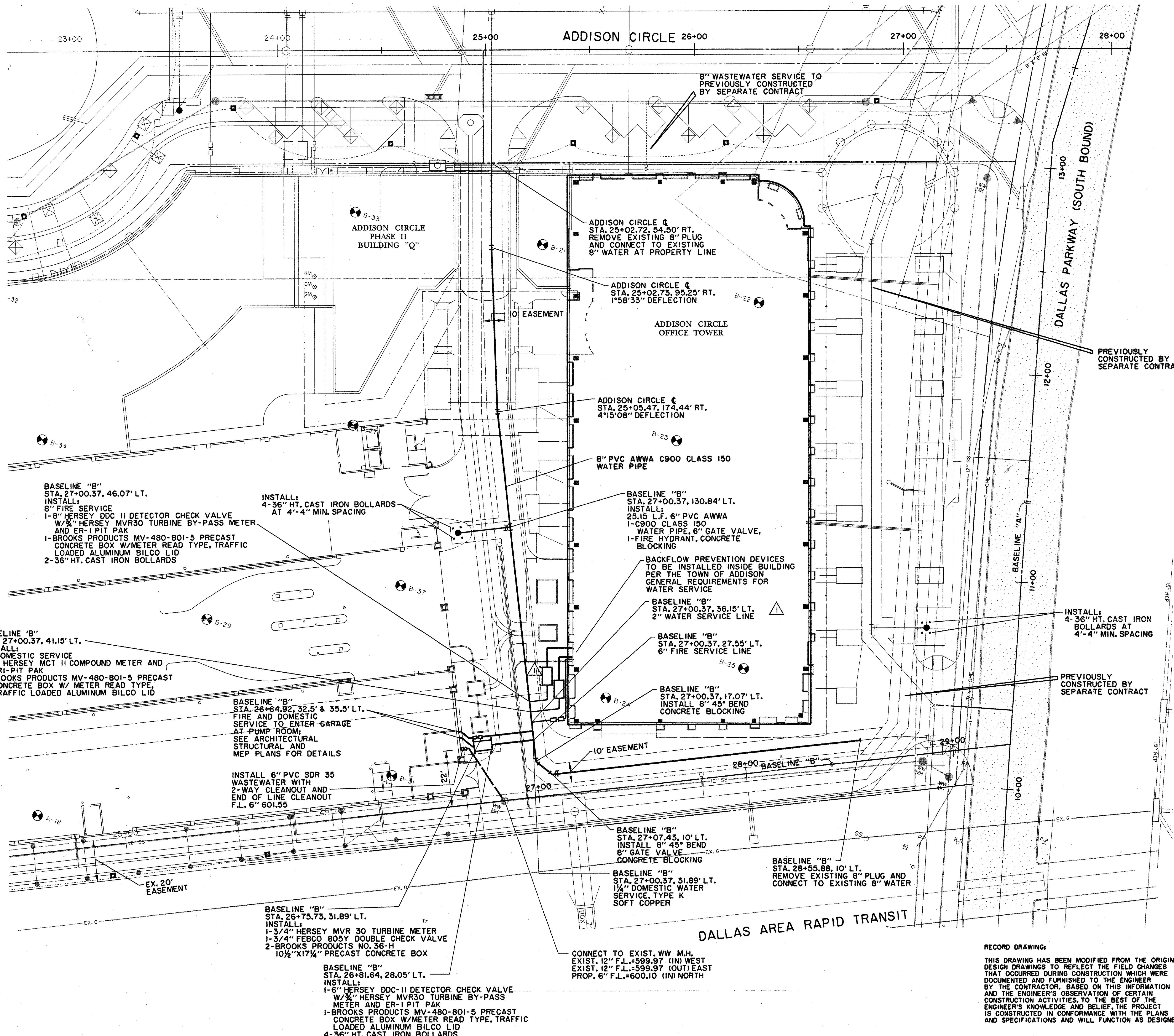
Revisions:
 Date:
 Sheet Title:
WATER & WASTEWATER PLAN
 Sheet No:
C7



RECORD DRAWING:
 THIS DRAWING HAS BEEN MODIFIED FROM THE ORIGINAL DESIGN DRAWINGS TO REFLECT THE FIELD CHANGES THAT OCCURRED DURING CONSTRUCTION WHICH WERE DOCUMENTED AND FURNISHED TO THE ENGINEER BY THE CONTRACTOR. BASED ON THIS INFORMATION AND THE ENGINEER'S OBSERVATION OF CERTAIN CONSTRUCTION ACTIVITIES, TO THE BEST OF THE ENGINEER'S KNOWLEDGE AND BELIEF, THE PROJECT IS CONSTRUCTED IN CONFORMANCE WITH THE PLANS AND SPECIFICATIONS AND WILL FUNCTION AS DESIGNED.

BENCHMARKS:
 BM#5
 'T' CUT AT NORTHWEST CORNER OF NORTH HDWL. OF 7'X7' BOX CULVERT UNDER RAILROAD, 180' WEST OF DALLAS PARKWAY SOUTHBOUND, ELEV. 610.49
 BM#6
 'T' CUT AT CENTER FRONT OF 18" REC. INLET, SECOND INLET NORTH OF RAILROAD TRACKS ON THE WEST SIDE OF DALLAS PARKWAY SOUTHBOUND, ELEV. 605.67

**ADDISON CIRCLE
 OFFICE BUILDING**
 ADDISON
 TEXAS



H:\PROJECTS\ADDISON OFFICE BUILDING\ADDISON OFFICE BUILDING.dwg
 DATE: 10/15/97
 DRAWN BY: J. H. HARRIS
 CHECKED BY: J. H. HARRIS
 PROJECT NO.: 5494
 SHEET NO.: 12/1498

HUIT-ZOLLARS, INC.
 3131 McKinney Ave., Suite 600
 Dallas, TX 75204 (214) 697-0311

HKS
 HKS Inc., Architects-Engineers-Planners
 700 N. Pearl, Suite 1100, LB 307
 Dallas, Texas 75201-7485 (214) 969-5599

Job No: 5494
 ISSUED FOR CONSTRUCTION

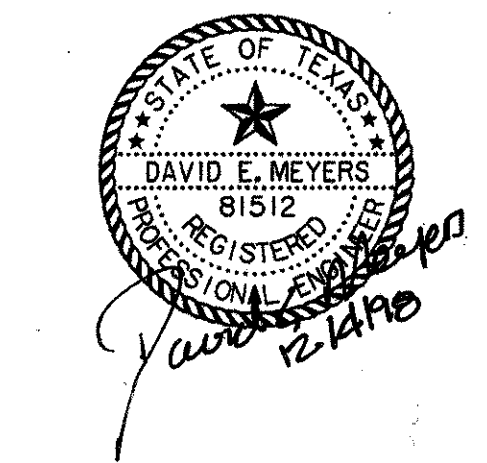
15 OCT. 1997

RECORD DRAWING
 12/4/98
 ADDED COOLING TOWER
 SERVICE LINE; SHIFTED
 VAULTS & BOLLARDS
 1/16/98

Revisions:
 Date:
 Sheet Title:
WATER & WASTEWATER PLAN
 Sheet No:
C7

BENCHMARKS:
 BM#5
 12" CUT AT NORTHWEST CORNER
 OF NORTH HDWL OF 7'X7' BOX
 CULVERT UNDER RAILROAD,
 180' WEST OF DALLAS
 PARKWAY SOUTHBOUND,
 ELEV. 610.49
 BM#6
 12" CUT AT CENTER FRONT OF
 18" REC. INLET, SECOND INLET
 NORTH OF RAILROAD TRACKS
 ON THE WEST SIDE OF DALLAS
 PARKWAY SOUTHBOUND,
 ELEV. 605.87

THE SEAL APPEARING ON THIS
 DOCUMENT WAS AUTHORIZED BY
 DAVID E. MEYERS, P.E. 81512
 ON DEC. 4, 1998.



RECORD DRAWING:
 THIS DRAWING HAS BEEN MODIFIED FROM THE ORIGINAL
 DESIGN DRAWINGS TO REFLECT THE FIELD CHANGES
 THAT OCCURRED DURING CONSTRUCTION WHICH WERE
 DOCUMENTED AND FURNISHED TO THE ENGINEER
 BY THE CONTRACTOR, BASED ON THIS INFORMATION
 AND THE ENGINEER'S OBSERVATION OF CERTAIN
 CONSTRUCTION ACTIVITIES, TO THE BEST OF THE
 ENGINEER'S KNOWLEDGE AND BELIEF, THE PROJECT
 IS CONSTRUCTED IN CONFORMANCE WITH THE PLANS
 AND SPECIFICATIONS AND WILL FUNCTION AS DESIGNED.

date:
 20 JUN 97