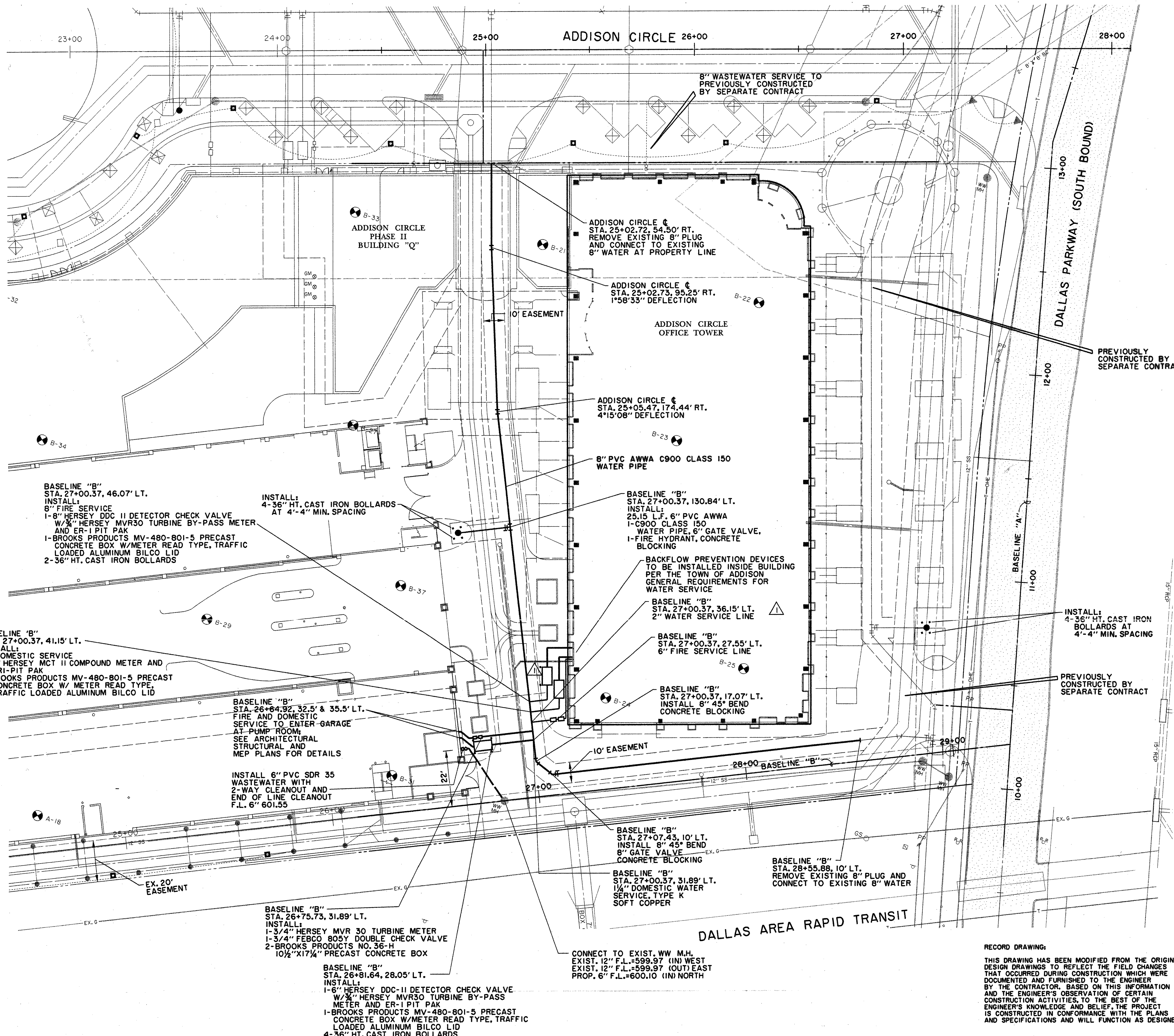
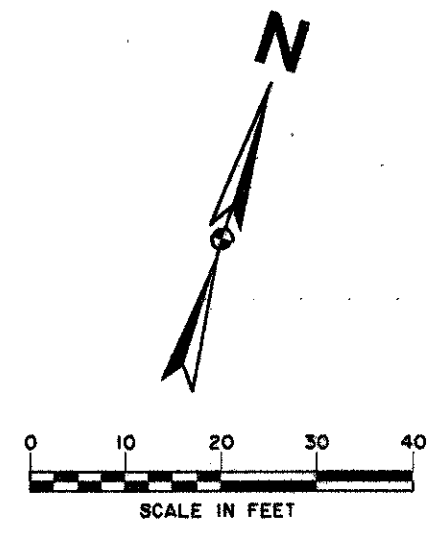


ADDISON CIRCLE
 OFFICE BUILDING
 ADDISON
 TEXAS



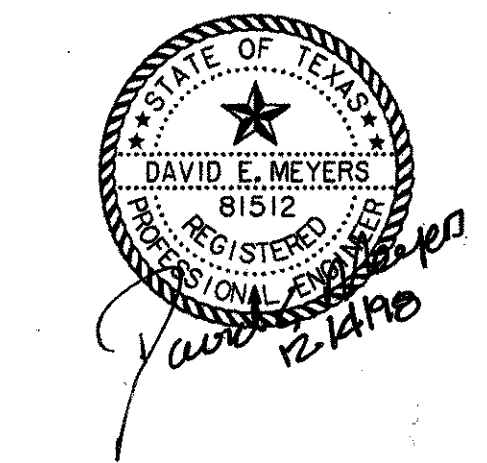
H:\PROJECTS\ADDISON OFFICE BUILDING\ADDISON OFFICE BUILDING.DWG
 DATE: 10/15/97
 DRAWN BY: JMM
 CHECKED BY: JMM
 PLOT NUMBER: 17-02000

PROJECT: ADDISON OFFICE BUILDING
 LOCATION: 2500 W. ADDISON AVE., ADDISON, TEXAS
 CLIENT: HUIT-ZOLLARS, INC.
 DESIGNER: HKS INC.
 DATE: 10/15/97
 SCALE: AS SHOWN

3002-BE-1483B-11P-DT15
 20 JUN 97

BENCHMARKS:
 BM#5
 12" CUT AT NORTHWEST CORNER OF NORTH HDWL OF 7'X7' BOX CULVERT UNDER RAILROAD, 180' WEST OF DALLAS PARKWAY SOUTHBOUND, ELEV. 610.49
 BM#6
 12" CUT AT CENTER FRONT OF 18" REC. INLET, SECOND INLET NORTH OF RAILROAD TRACKS ON THE WEST SIDE OF DALLAS PARKWAY SOUTHBOUND, ELEV. 605.87

THE SEAL APPEARING ON THIS DOCUMENT WAS AUTHORIZED BY DAVID E. MEYERS, P.E. 81512 ON DEC. 4, 1998.



RECORD DRAWING:
 THIS DRAWING HAS BEEN MODIFIED FROM THE ORIGINAL DESIGN DRAWINGS TO REFLECT THE FIELD CHANGES THAT OCCURRED DURING CONSTRUCTION WHICH WERE DOCUMENTED AND FURNISHED TO THE ENGINEER BY THE CONTRACTOR, BASED ON THIS INFORMATION AND THE ENGINEER'S OBSERVATION OF CERTAIN CONSTRUCTION ACTIVITIES, TO THE BEST OF THE ENGINEER'S KNOWLEDGE AND BELIEF, THE PROJECT IS CONSTRUCTED IN CONFORMANCE WITH THE PLANS AND SPECIFICATIONS AND WILL FUNCTION AS DESIGNED.

PROTOTYPE DATA, INC.
 CONSULTING ENGINEERS
 3131 McKinney Ave., Suite 600
 Dallas, TX 75204 (214) 874-0311

HKS
 HKS Inc. Architects-Engineers-Planners
 700 N. Pearl Street, Suite 1100, L.B. 307
 Dallas, Texas 75202-7485 (214) 969-5599

Job No: 5494
 ISSUED FOR CONSTRUCTION

15 OCT. 1997

RECORD DRAWING
 12/4/98
 ADDED COOLING TOWER SERVICE LINE; SHIFTED VAULTS & BOLLARDS
 1/16/98

Revisions:
 Date:
 Sheet Title:
WATER & WASTEWATER PLAN
 Sheet No:
C7
 © 1997 HKS Inc.