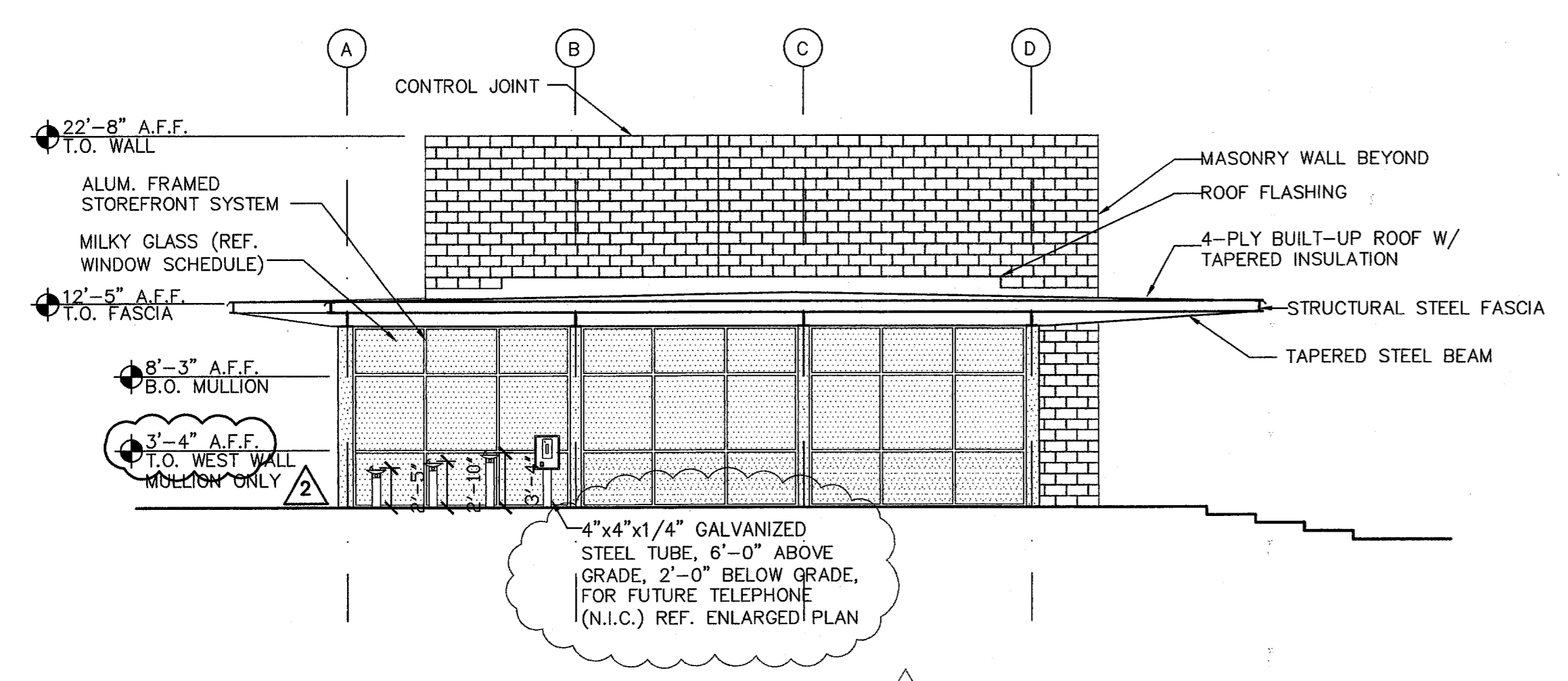
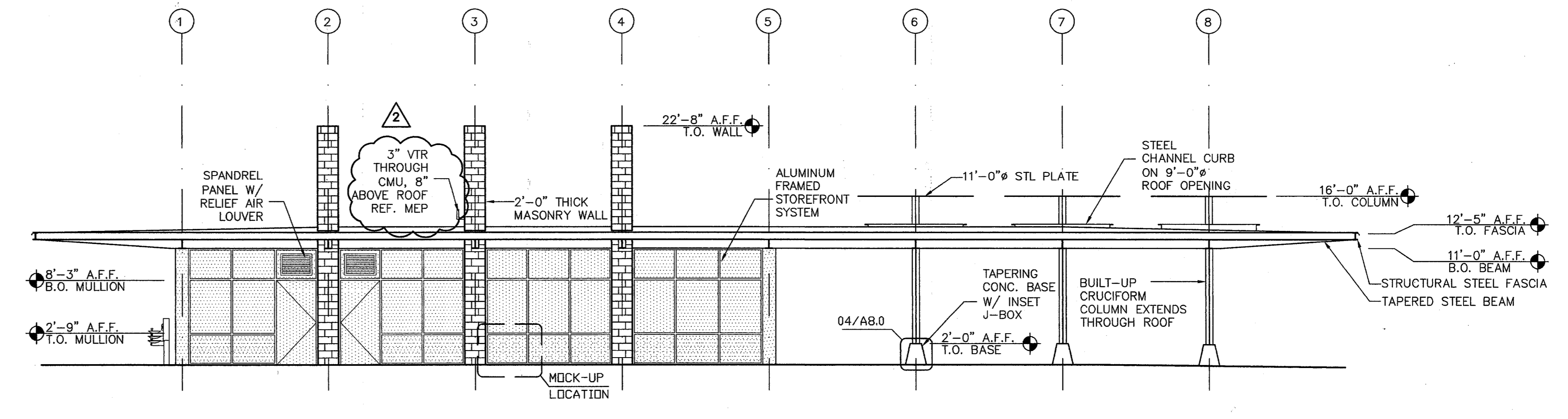


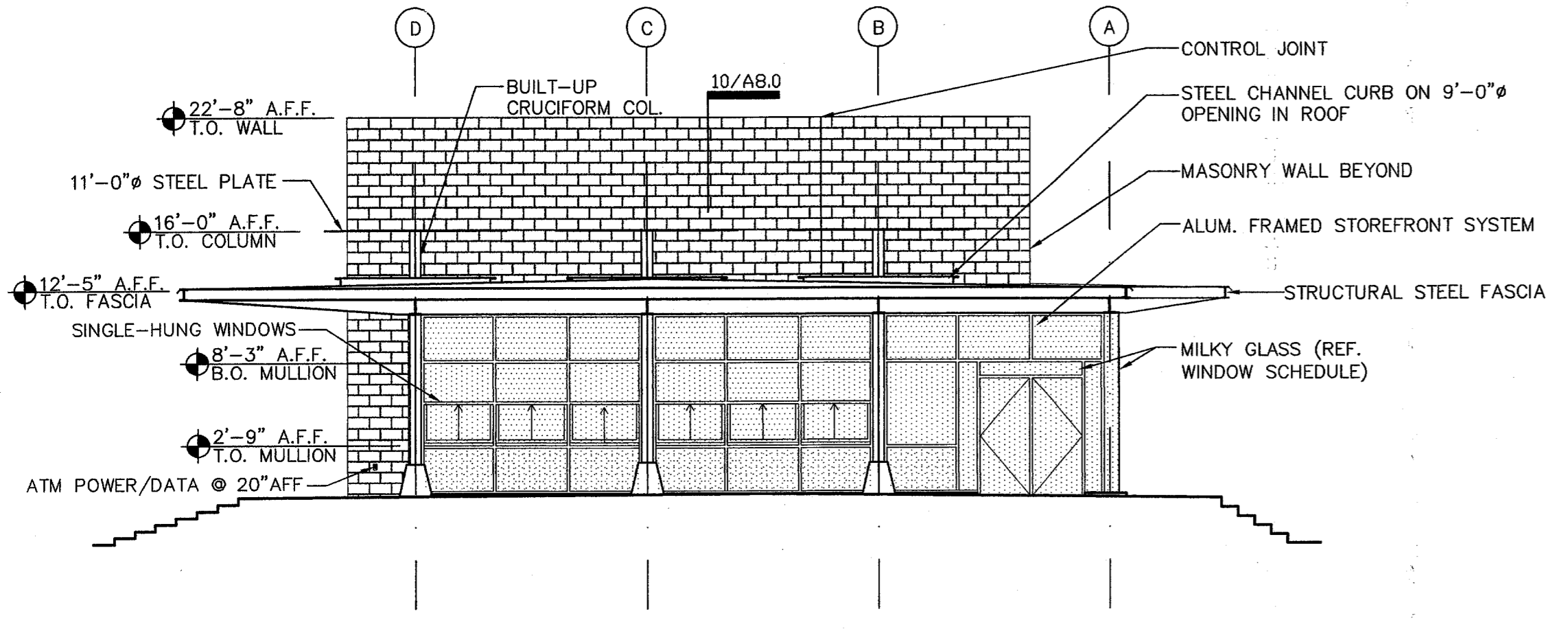
5 COLUMN LINE 2, EAST SIDE
CMU WALL ELEVATION 1/8"=1'-0"



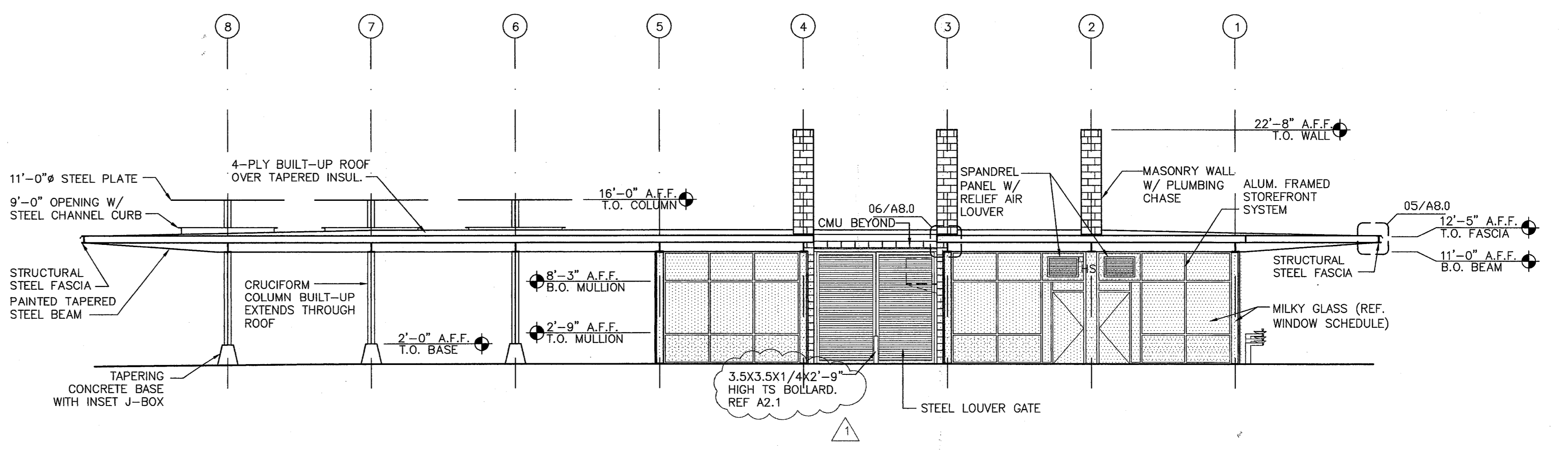
4 WEST ELEVATION
EXTERIOR ELEVATION 1/8"=1'-0"



3 SOUTH ELEVATION
EXTERIOR ELEVATION 1/8"=1'-0"



2 EAST ELEVATION
EXTERIOR ELEVATION 1/8"=1'-0"



1 NORTH ELEVATION
EXTERIOR ELEVATION 1/8"=1'-0"

issue	date
DD	08/26/02
50% CD	11/05/02
100% CD	02/06/03
POST-BID	03/04/03