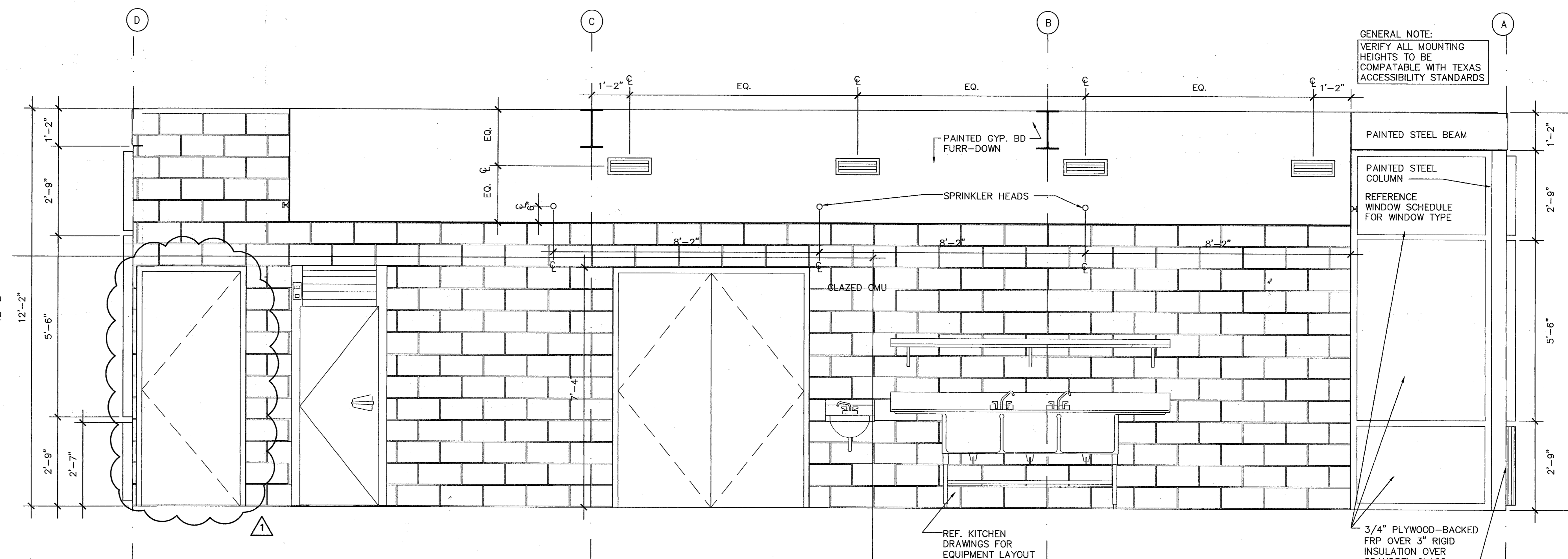
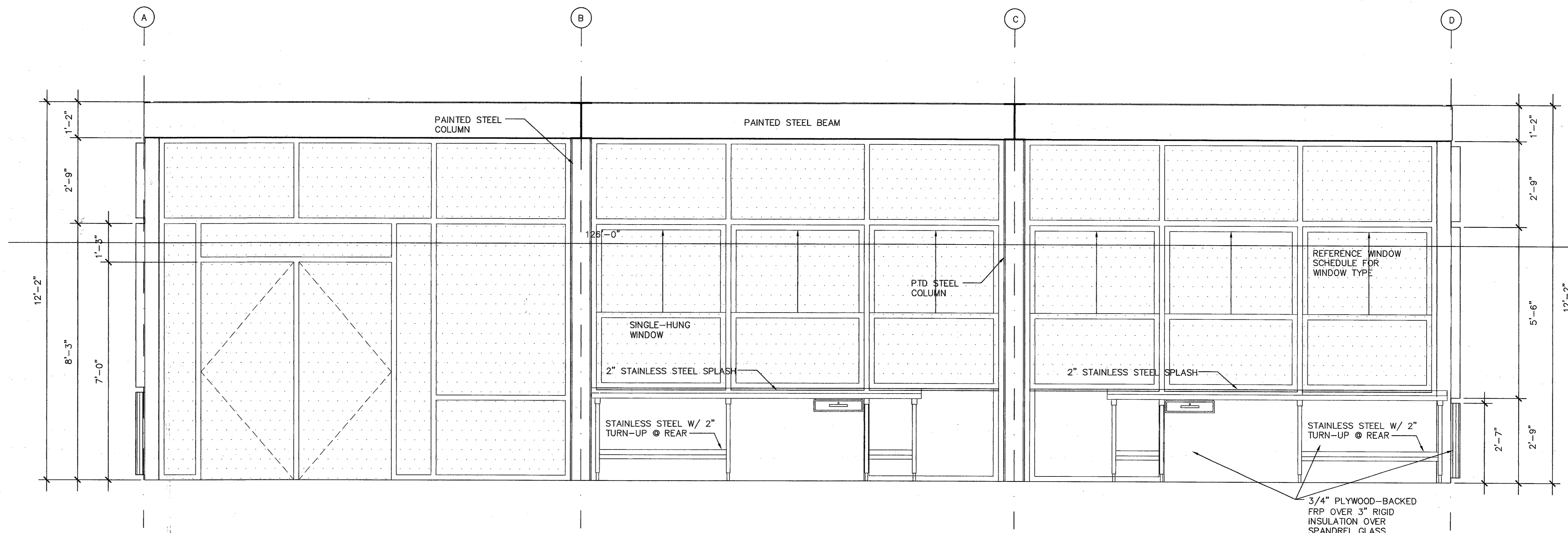


**3 SOUTH ELEVATION**  
KITCHEN  
1/2"=1'-0"



**2 WEST ELEVATION**  
KITCHEN  
1/2"=1'-0"



**1 EAST ELEVATION**  
KITCHEN  
1/2"=1'-0"

GENERAL NOTE:  
VERIFY ALL MOUNTING  
HEIGHTS TO BE  
COMPATIBLE WITH TEXAS  
ACCESSIBILITY STANDARDS

ISSUE	DATE	DESCRIPTION
DD	08/28/02	
50% CD	11/05/02	
100% CD	01/23/03	
POST-BID	03/04/03	REVISION