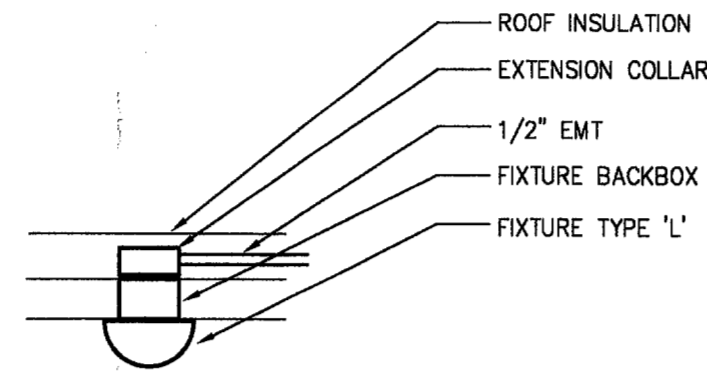
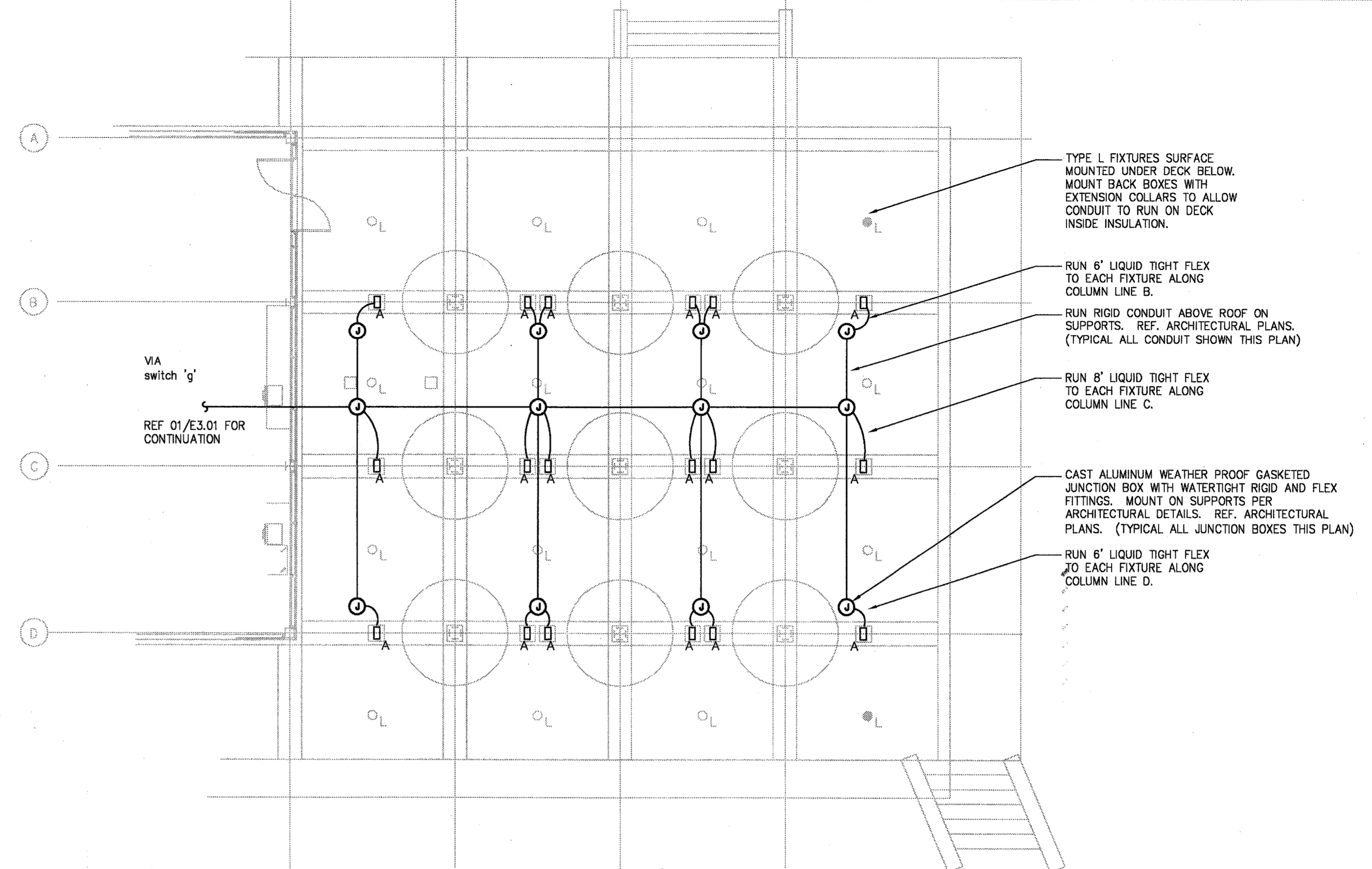


GENERAL ELECTRICAL LIGHTING NOTES

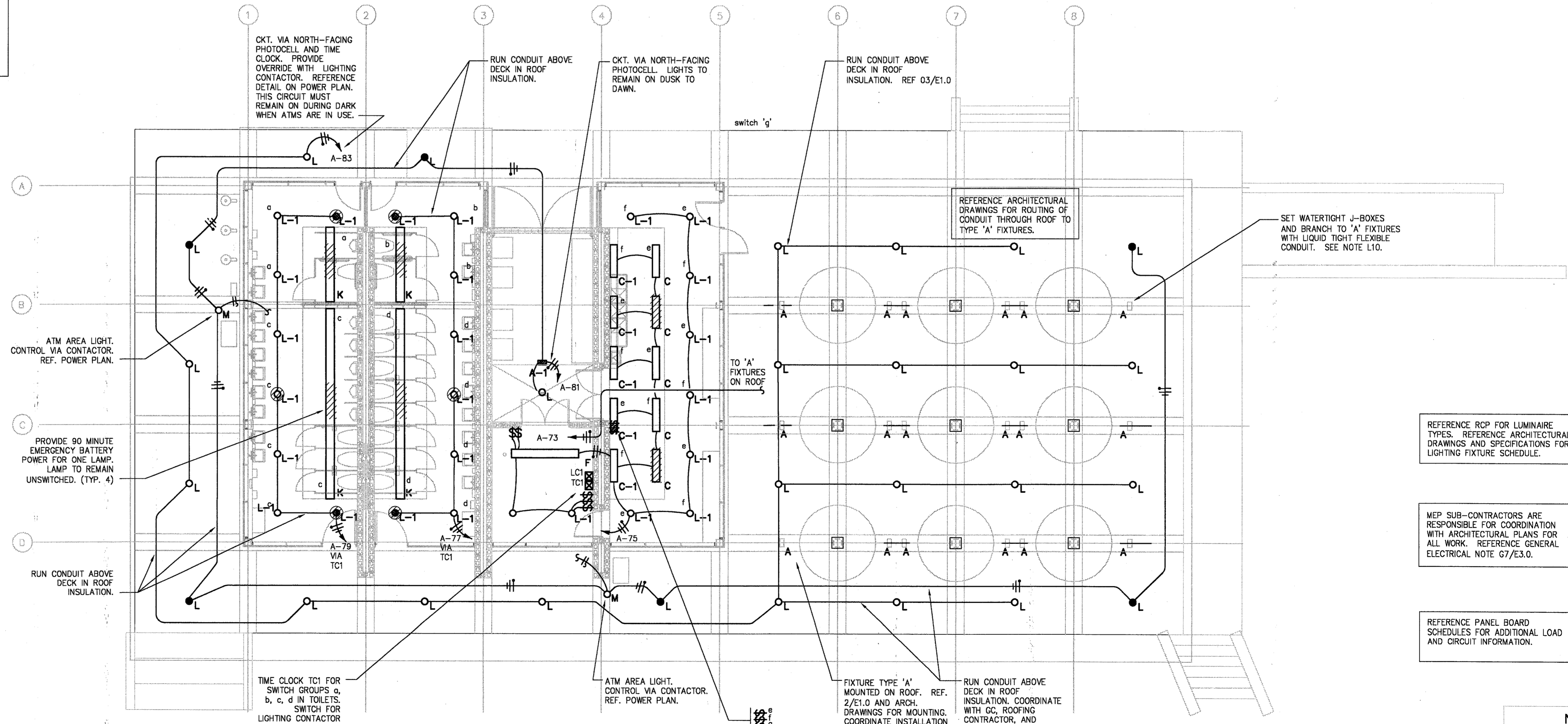
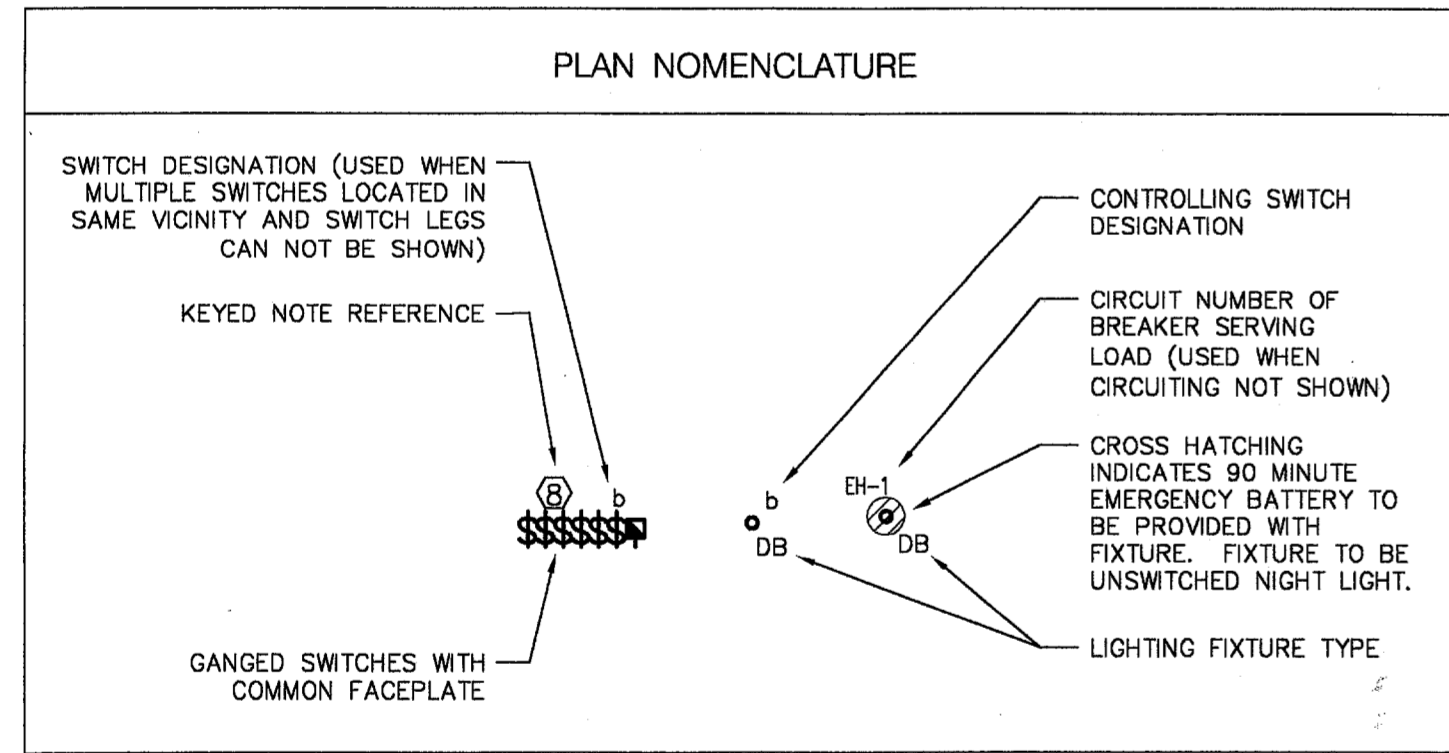
- L1. FIXTURES: ALL FIXTURES ARE TYPE 'A' UNLESS NOTED OTHERWISE. REFERENCE LIGHTING FIXTURE SCHEDULE FOR COMPLETE DESCRIPTION OF EACH FIXTURE TYPE. REFERENCE ARCHITECT'S DRAWINGS FOR EXACT LOCATIONS OF FIXTURES.
- L2. CONTROL: LOWERCASE LETTERS SHOWN ADJACENT TO FIXTURES INDICATE CONTROL BY SWITCHES OR HOMERUNS INDICATED WITH SAME LOWER CASE LETTER. SWITCHES SHOWN NEAR DOORS IN ENCLOSED SPACES CONTROL LIGHTING IN SAME SPACE.
- L3. GANGING: MOUNT ADJACENT SWITCHES GANGED.
- L4. SUPPORT: MOUNT ALL LIGHT FIXTURES ACROSS CEILING TEES OR FROM STRUCTURE ABOVE AS APPROVED BY LOCAL AUTHORITIES. PROVIDE GRID CLIPS IF REQUIRED BY LOCAL AUTHORITIES. IN NO CASE SHALL CEILING TILES OR PLASTER CEILING SUPPORT ANY FIXTURE.
- L5. SWITCHES: ALL LINE VOLTAGE SWITCHES SHALL BE SPECIFICATION GRADE, RATED 20A 120/277V. PROVIDE SWITCHES COMPATIBLE WITH RECEPTACLES BY STYLE AND GRADE. SUBMIT SAMPLES TO ARCHITECT FOR APPROVAL PRIOR TO PURCHASE AND INSTALLATION. VERIFY EXACT LOCATION OF SWITCHES WITH ARCHITECT PRIOR TO INSTALLATION.
 - SWITCH PLATES: FVR
 - SWITCH FACE: FVR
 - MANUFACTURER: FVR
 - STYLE: FVR
- L6. PROVIDE LIGHTING CONTACTORS OR RELAYS AS REQUIRED FOR LIGHTING CONTROL AS SHOWN ON PLANS OR DIRECTED BY OWNER. PROVIDE ADDITIONAL SWITCHING CONTROLS IF REQUIRED BY LOCAL ENERGY CODES.
- L7. WIRE FROM JUNCTION BOXES TO FIXTURES OR SWITCHES. ADDITIONAL JUNCTION BOXES AND SWITCHES MAY BE REQUIRED BEYOND THOSE SHOWN. TYPICAL SWITCHING SHALL BE LOCATED INSIDE EACH ROOM NEAR THE STRIKE SIDE OF EACH DOOR.
- L8. CROSS HATCHED FIXTURES INDICATE EMERGENCY/NIGHT LIGHT FIXTURES. PROVIDE BODINE B50 BATTERY PACK (OR AS SPECIFIED IN LIGHTING FIXTURE SCHEDULE) FOR ALL EMERGENCY/NIGHT LIGHT FLUORESCENT FIXTURES NOT SERVED BY EMERGENCY POWER. PROVIDE QUARTZ RESTRIKE ACCESSORY WITH RELAY FOR ALL EMERGENCY AND EMERGENCY/NIGHT LIGHT HID FIXTURES, IF ANY.
- L9. EMERGENCY EGRESS LIGHTING AND EXIT LIGHTS SHALL COMPLY WITH NFPA 101, ALL LOCAL CODES, AND NATIONAL CODES AND REQUIREMENTS. PROVIDE ALLOWANCE FOR 1 ADDITIONAL EMERGENCY EXIT LIGHTS, AND 1 ADDITIONAL EMERGENCY BATTERY PACK LIGHTS. IF REQUIRED, ADDITIONAL LIGHTS ARE TO BE LOCATED AS DETERMINED BY LOCAL AUTHORITIES AND ARCHITECT.
- L10. COORDINATE ROOF PENETRATIONS OF CONDUIT FOR LIGHTING WITH ARCHITECT. REFERENCE ARCHITECTURAL DRAWINGS FOR ROUTING AND PLACEMENT OF BOXES AND CONDUIT FOR EXTERIOR FIXTURES. PROVIDE WATERTIGHT JUNCTION BOXES AND FIELD VERIFY LOCATION AND PLACEMENT OF BOXES. USE WATERTIGHT FLEXIBLE CONDUIT FOR TYPE 'A' FIXTURES. COORDINATE LENGTH AND ARRANGEMENT OF CONDUIT AND CONNECTIONS FOR TYPE 'A' FIXTURES IN FIELD WITH ARCHITECT.



3 FIXTURE 'L' INSTALLATION ELECTRICAL DETAIL N.T.S.



2 ABOVE ROOF LIGHTING ELECTRICAL PLAN 1/8\"/>



LIGHTING CONTACTOR LC1: SQUARE D LX640 MECHANICALLY HELD 4 POLE CONTACTOR.

TIME CLOCK TC1 FOR SWITCH GROUPS a, b, c, d IN TOILETS. SWITCH FOR LIGHTING CONTACTOR LC1 CONTROLLING EXTERIOR LIGHTING AND ATMS. (REFERENCE POWER PLAN FOR WIRING DIAGRAM).

TIME CLOCK TC1: TORK DZS400A ASTRONOMIC 4 CHANNEL DIGITAL SPDT TIME CLOCK.

SEE DRAWINGS BY SITE ARCHITECT FOR EXTENDED AREA ATM LIGHTING.

1 LIGHTING ELECTRICAL PLAN 1/8\"/>

REFERENCE RCP FOR LUMINAIRE TYPES. REFERENCE ARCHITECTURAL DRAWINGS AND SPECIFICATIONS FOR LIGHTING FIXTURE SCHEDULE.

MEP SUB-CONTRACTORS ARE RESPONSIBLE FOR COORDINATION WITH ARCHITECTURAL PLANS FOR ALL WORK. REFERENCE GENERAL ELECTRICAL NOTE 07/E3.0.

REFERENCE PANEL BOARD SCHEDULES FOR ADDITIONAL LOAD AND CIRCUIT INFORMATION.

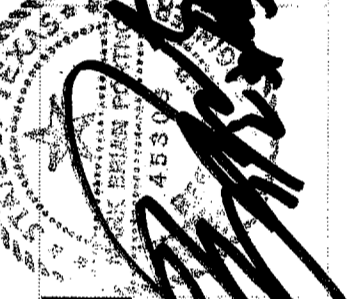


E1.0 ELECTRICAL

cunningham architects
 918 Dragon Street
 Dallas, Texas 75207
 V 214.915.0800
 F 214.915.0901

MYRDIN CONSULTING SERVICES
 918 Dragon Street, Dallas, Texas 75207
 M 214.915.0805
 W 214.915.0801
 M P 214.915.0909

MYRDIN
 MEP SYSTEMS DESIGN AND ENGINEERING, INC.



Addison Arts and Events Pavilion
 Addison, Texas

date
 08/26/02
 10/31/02
 01/23/03

issue
 DD 50% CD
 95% CD