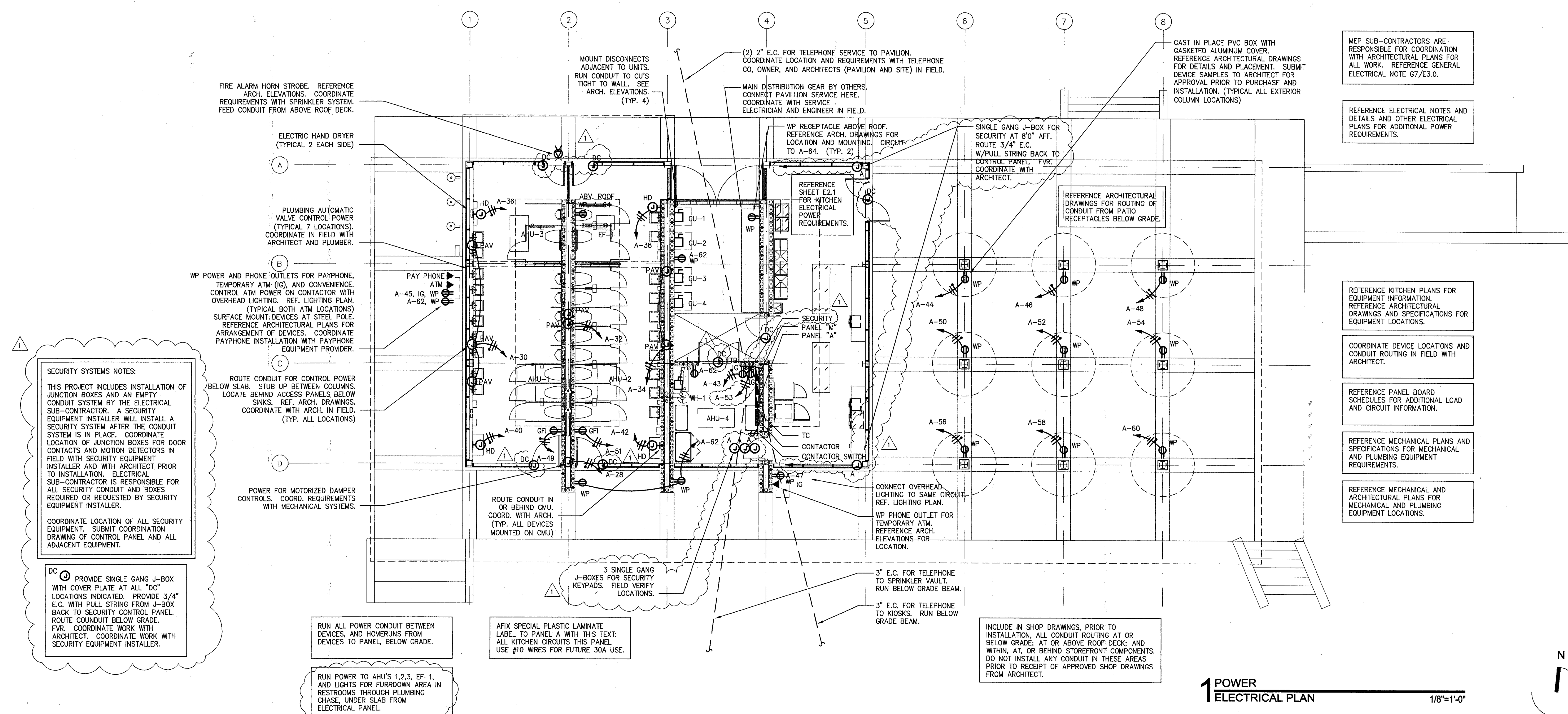
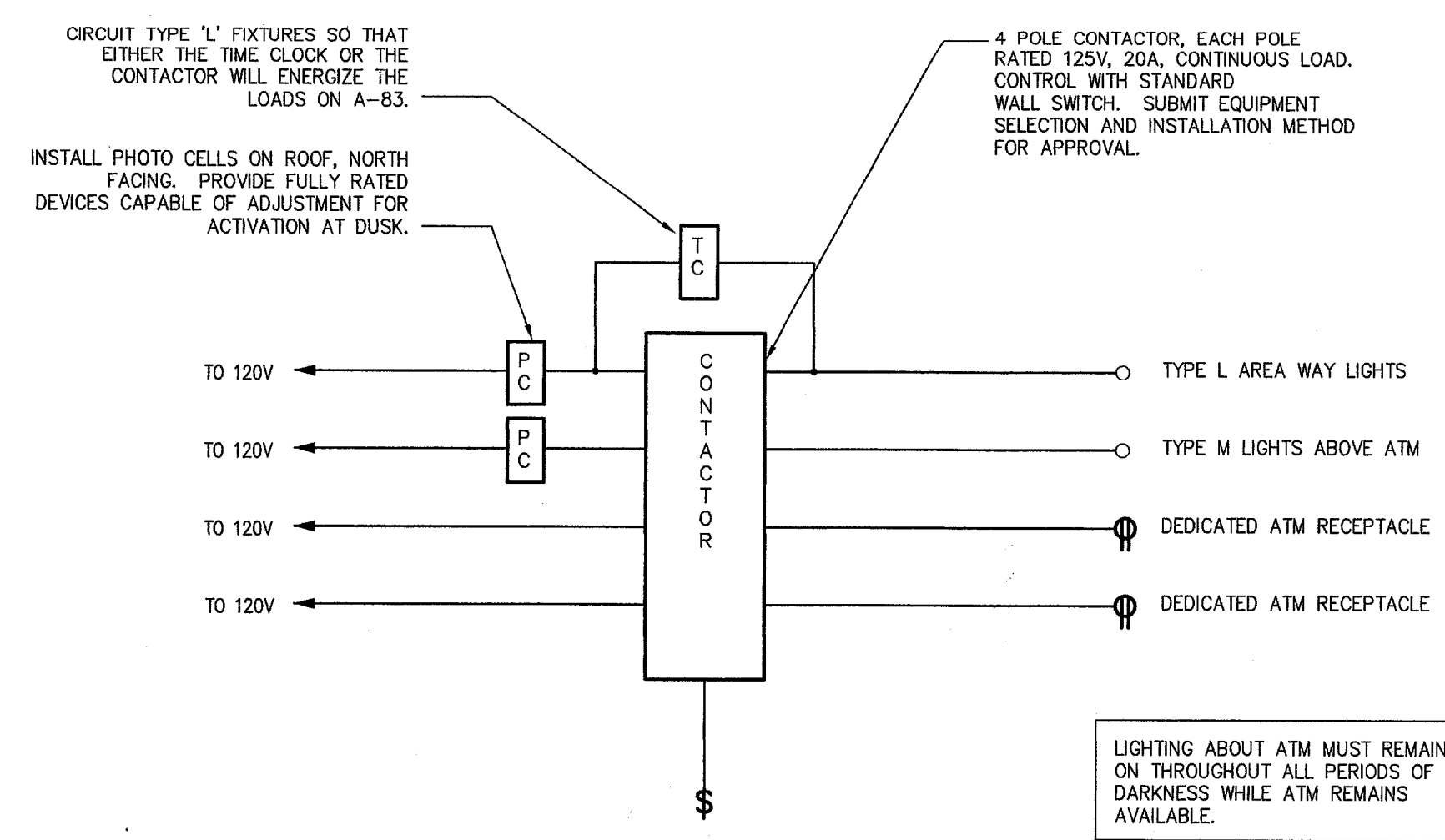


MECHANICAL EQUIPMENT SCHEDULE																			
PLAN MARK	EQUIPMENT DESCRIPTION/CATALOG NO.	LOCATION	MECHANICAL DATA					ELECTRICAL DATA							COMMENTS				
			VOLTS	PHASE	HP	FLA	KW	STARTER	DISCONNECT	MAX DCPI	PANEL SERVED	WIRING	COND						
AHU-1	AHU W/ HEAT FAN HEAT	208	3	1	0.5	2.2	13	36.1	48	M	00	E 1	60	50	50	M	1/3/5	3 #6, 1 #10G	1
AHU-2	AHU W/ HEAT FAN HEAT	208	3	1	0.5	2.2	9	24.1	33	M	00	E 1	60	35	35	M	7/9/11	3 #8, 1 #10G	10.75
AHU-3	AHU W/ HEAT FAN HEAT	208	3	1	0.5	2.2	9	24.1	33	M	00	E 1	60	35	35	M	13/15/17	3 #8, 1 #10G	10.75
AHU-4	AHU W/ HEAT FAN HEAT	208	3	1	0.8	3.1	19	51.9	69	M	00	E 1	100	80	70	M	19/21/23	3 #4, 1 #8G	11.25
CU-1	COMPRESSOR CONDENSER FAN	208	3	1		16.0	0.0		22	M		E 1	30	35	30	M	2/4/6	3 #10, 1 #10G	10.75
CU-2	COMPRESSOR CONDENSER FAN	208	3	1		11.0	0.0		15	M		E 1	30	25	20	M	18/10/12	3 #12, 1 #10G	0.5
CU-3	COMPRESSOR CONDENSER FAN	208	3	1		11.0	0.0		15	M		E 1	30	25	20	M	14/16/18	3 #12, 1 #10G	0.5
CU-4	COMPRESSOR CONDENSER FAN	208	3	1		19.0	0.0		26	M		E 1	60	40	35	M	20/22/24	3 #10, 1 #10G	10.75
EF-1	MOTOR	120	1	0.8	13.2				17	E	M	E 1	30	30	20	A	67	2 #12, 1 #10G	0.5
WH-1	WATER HEATER	STORAGE	208	3	1	18	50.0	62		E	1		70	70	70	M	25/27/29	3 #4, 1 #8G	11.25

JOB NAME: PAVILION - LOCATION: ADDISON - JOB NUMBER: 02098 - MECHANICAL ENGINEER: MBP - ELECTRICAL: WMS - FILE NAME: 02098MCS.WQ1 22-Dec-2002



SECURITY SYSTEMS NOTES:
 THIS PROJECT INCLUDES INSTALLATION OF JUNCTION BOXES AND AN EMPTY CONDUIT SYSTEM BY THE ELECTRICAL SUB-CONTRACTOR. A SECURITY EQUIPMENT INSTALLER WILL INSTALL A SECURITY SYSTEM AFTER THE CONDUIT SYSTEM IS IN PLACE. COORDINATE LOCATION OF JUNCTION BOXES FOR DOOR CONTACTS AND MOTION DETECTORS IN FIELD WITH SECURITY EQUIPMENT INSTALLER AND WITH ARCHITECT PRIOR TO INSTALLATION. ELECTRICAL SUB-CONTRACTOR IS RESPONSIBLE FOR ALL SECURITY CONDUIT AND BOXES REQUIRED OR REQUESTED BY SECURITY EQUIPMENT INSTALLER.
 COORDINATE LOCATION OF ALL SECURITY EQUIPMENT. SUBMIT COORDINATION DRAWING OF CONTROL PANEL AND ALL ADJACENT EQUIPMENT.

DC PROVIDE SINGLE GANG J-BOX WITH COVER PLATE AT ALL "DC" LOCATIONS INDICATED. PROVIDE 3/4" E.C. WITH FULL STRING FROM J-BOX BACK TO SECURITY CONTROL PANEL. ROUTE CONDUIT BELOW GRADE. F.V.R. COORDINATE WORK WITH SECURITY EQUIPMENT INSTALLER.

RUN ALL POWER CONDUIT BETWEEN DEVICES, AND HOMERUNS FROM DEVICES TO PANEL, BELOW GRADE.

RUN POWER TO AHU'S 1,2,3, EF-1, AND LIGHTS FOR FURROWDOWN AREA IN RESTROOMS THROUGH PLUMBING CHASE, UNDER SLAB FROM ELECTRICAL PANEL.

AFIX SPECIAL PLASTIC LAMINATE LABEL TO PANEL A WITH THIS TEXT: ALL KITCHEN CIRCUITS THIS PANEL. USE #10 WIRES FOR FUTURE 30A USE.

INCLUDE IN SHOP DRAWINGS, PRIOR TO INSTALLATION, ALL CONDUIT ROUTING AT OR BELOW GRADE; AT OR ABOVE ROOF DECK; AND WITHIN, AT, OR BEHIND STOREFRONT COMPONENTS. DO NOT INSTALL ANY CONDUIT IN THESE AREAS PRIOR TO RECEIPT OF APPROVED SHOP DRAWINGS FROM ARCHITECT.

MEP SUB-CONTRACTORS ARE RESPONSIBLE FOR COORDINATION WITH ARCHITECTURAL PLANS FOR ALL WORK. REFERENCE GENERAL ELECTRICAL NOTE G7/E3.0.

REFERENCE ELECTRICAL NOTES AND DETAILS AND OTHER ELECTRICAL PLANS FOR ADDITIONAL POWER REQUIREMENTS.

REFERENCE KITCHEN PLANS FOR EQUIPMENT INFORMATION. REFERENCE ARCHITECTURAL DRAWINGS AND SPECIFICATIONS FOR EQUIPMENT LOCATIONS.

COORDINATE DEVICE LOCATIONS AND CONDUIT ROUTING IN FIELD WITH ARCHITECT.

REFERENCE PANEL BOARD SCHEDULES FOR ADDITIONAL LOAD AND CIRCUIT INFORMATION.

REFERENCE MECHANICAL PLANS AND SPECIFICATIONS FOR MECHANICAL AND PLUMBING EQUIPMENT REQUIREMENTS.

REFERENCE MECHANICAL AND ARCHITECTURAL PLANS FOR MECHANICAL AND PLUMBING EQUIPMENT LOCATIONS.

cunningham architects
 918 Dragon Street, Suite 2207
 Addison, TX 75101
 Tel: 214.915.0800
 Fax: 214.915.0801

MYRDIN

MEP SYSTEMS DESIGN AND ENGINEERING, INC.
 918 Dragon Street, Dallas, Texas 75207
 Tel: 214.915.0805
 Fax: 214.915.0801

Addison Arts and Events Pavilion
 Addison, Texas

date: 08/26/02
 issue: DD 10/31/02
 50% CD 07/23/03
 95% CD 07/31/03
 ADDENDUM 1

E2.0
 ELECTRICAL