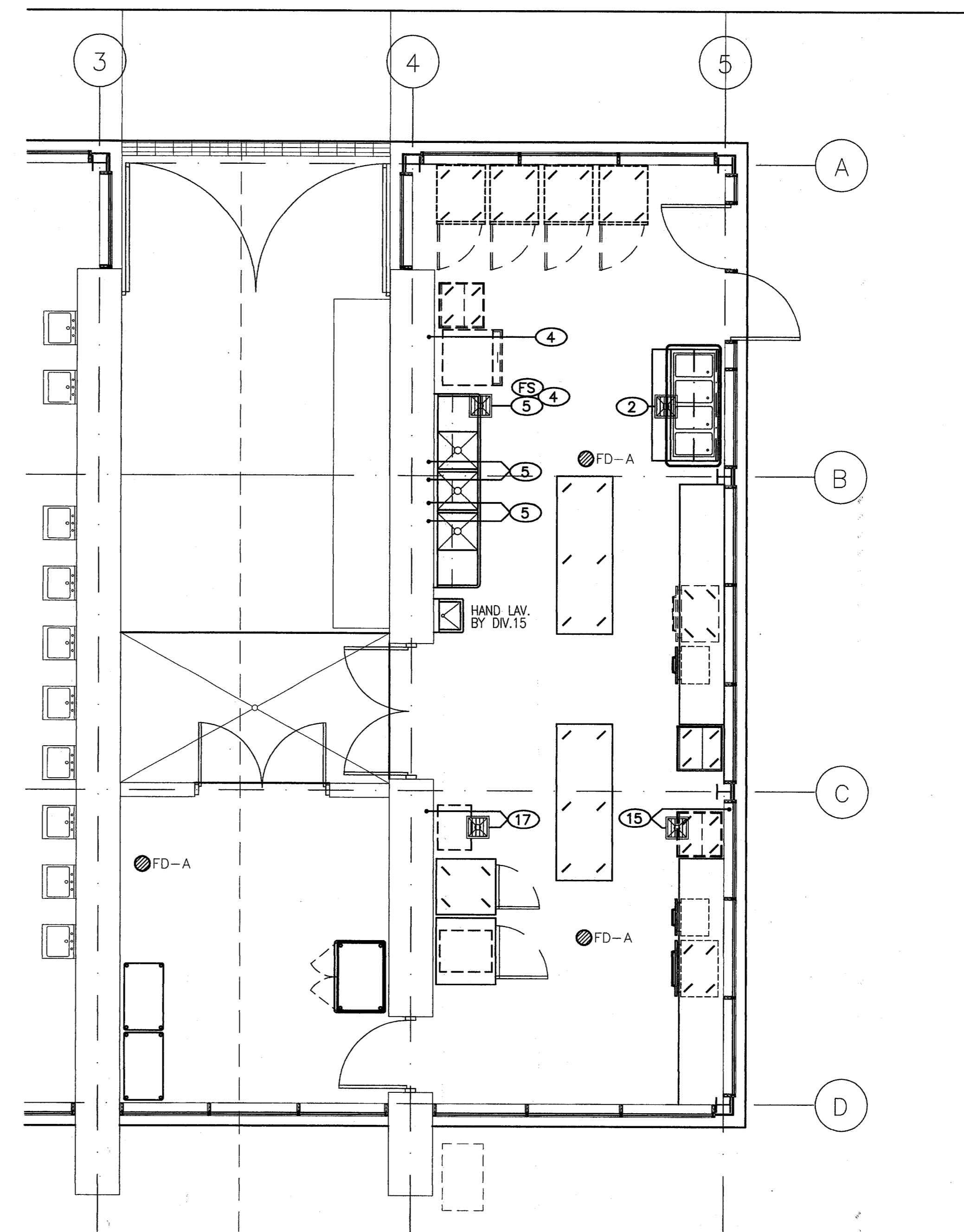


FOODSERVICE ELECTRICAL PLAN  
SCALE: 1/4"=1'-0"

GENERAL NOTE:  
COORDINATE WITH ELECTRICAL  
& MECHANICAL DRAWINGS. IN  
CASE OF CONFLICT, CONTACT  
ARCHITECT



FOODSERVICE MECHANICAL/PLUMBING PLAN  
SCALE: 1/4"=1'-0"

ITEM	QTY	DESCRIPTION	ELECTRICAL						REMARKS
			FLAMPS	KW	HP	VOLTS	PHASE	ROUGH-IN HEIGHT	
1.	4	CATERING CARTS (HOT/COLD)	16.6			120	1 - X	18"	
2.	1	PORTABLE STEAM TABLE	14.4			208	1 - X	18"	
4.	1	ICE MAKER W/ BIN	11.0			120/208	1 X	60"	BTC - 3 WIRE W/ NEUTRAL FOR 120V
7.	1	REACH-IN REFRIGERATOR	8.0			120	1 - X	87"	
8.	1	ROLL-IN REFRIGERATOR	10.6			120	1 - X	87"	
12.	1	MOBILE 2-DRAWER ROLLWARMER	7.5			120	1 - X	18"	
13.	2	CASH DRAWER	5.0			120	1 - X	24"	BTC - PEDESTAL RECEPT. ON COUNTER - DEDICATED CIR./ISOLATED GROUND
16.	1	MOBILE 2-DRAWER ROLLWARMER	7.5			120	1 - X	18"	ALTERNATE LOCATION
17.	1	COFFEE MAKER	29.0			120/208	1 - X	24"	BTC - 4 WIRE W/ GROUND

ELECTRICAL NOTES

- ALL FINAL CONNECTIONS SHOWN ON THIS DRAWING ARE ACTUAL REQUIREMENTS OF THE EQUIPMENT AND ARE SHOWN IN THEIR APPROXIMATE LOCATION.
- FABRICATED EQUIPMENT SHALL BE PRE-WIRED TO A SINGLE JUNCTION BOX FOR FINAL CONNECTION BY ELECTRICAL CONTRACTOR.
- ELECTRICAL CONTRACTOR TO PROVIDE AND INSTALL ALL SWITCHES, STARTERS, DISCONNECTS OR LOCK-OUT DEVICES, STARTERS, ETC., TO MEET N.E.C. AND O.S.H.A. STANDARDS.
- ALL RECEPTACLES SHALL BE GROUNDED PER N.E.C. AND O.S.H.A.
- WHEN OUTLETS ARE INDICATED, IT WILL BE ASSUMED THAT ATTACHED CORD AND PLUG IS STANDARD WITH EQUIPMENT UNLESS NOTED OTHERWISE.
- WHERE CONNECTION IS SHOWN AS JB, ELECTRICAL CONTRACTOR SHALL CONNECT TO JB FURNISHED WITH EQUIPMENT.
- USE COMPONENT HARDWARE #R5B-1010 SINGLE FACED ELECTRICAL OUTLET BOXES ON COUNTER TOP. BRANCH ELECTRICAL FROM JUNCTION BOXES ROUGHED IN @ 24" AFF. PROVIDE DUPLEX OUTLETS W/ 20 AMP CIRCUIT.

ABBREVIATIONS

- JB -- JUNCTION BOX
- DR -- DUPLEX RECEPTACLE
- SR -- SINGLE RECEPTACLE
- CIR -- CIRCUIT
- KW -- KILOWATT
- AMP -- AMPHERES
- HP -- HORSE POWER
- AFF -- ABOVE FINISH FLOOR
- BTC -- BRANCH TO CONNECTION

ELECTRICAL SYMBOLS

- SINGLE RECEPTACLE
- ⊖ DUPLEX RECEPTACLE
- ⊙ JUNCTION BOX
- ⓪ ITEM NUMBER

ITEM	QTY	DESCRIPTION	WATER		WASTE		GAS		ROUGH-IN HEIGHT	REMARKS
			COLD	HOT	DIRECT	INDIRECT	SIZE	MBU/HR		
2.	1	PORTABLE STEAM TABLE				1"			0"	BTC - MANIFOLD DRAINS W/ CHECK VALVE TO HOLD WATER IN PANS
4.	1	ICE MAKER W/ BIN	1/2"			(2)3/4"			60", 0"	BTC
5.	1	3 COMPARTMENT SINK (20" X 20" X 14" DEEP)	(2)3/4"	(2)3/4"		(3)2"			16", 0"	BTC
15.	1	MOBILE ICE BIN	1/2"			(2)1"			16", 0"	BTC - LOCATION FOR FUTURE SODA DISPENSER
17.	1	COFFEE MAKER	3/8"			1/2"			48", 0"	BTC - LOCATION FOR FUTURE COFFEE MAKER

PLUMBING ROUGH-IN NOTES

- ALL FINAL CONNECTIONS SHOWN ON THIS DRAWING ARE ACTUAL REQUIREMENTS OF THE EQUIPMENT AND ARE SHOWN IN THEIR APPROXIMATE LOCATION.
- PLUMBING VENT SIZES AND LOCATIONS ARE TO BE PER THE PLUMBING DRAWINGS.
- FLOOR DRAINS SHOWN ARE FOR EQUIPMENT USE AND GENERAL CLEANING PURPOSES, AND ARE TO BE OF THE TYPE INDICATED IN SYMBOLS AND SCHEDULED IN THE PLUMBING DRAWINGS UNLESS OTHERWISE REQUIRED BY LOCAL CODES.
- STOP VALVES SHALL BE PROVIDED IN ALL PIPING TO KITCHEN AND OTHER EQUIPMENT OR FIXTURE AHEAD OF OPERATING LEVER HANDLES OR FAUCETS. BACK FLOW PREVENTER SHALL BE ADDED IN LINE PRIOR TO ALL SODA EQUIPMENT.
- FABRICATED EQUIPMENT SHALL BE PRE-PIPED BY FABRICATOR TO ONE POINT AS INDICATED FOR FIELD CONNECTION BY THE PLUMBING CONTRACTOR.
- HAND SINKS, POT SINKS AND/OR FLOOR SINKS TO BE SPILLED TO GREASE TRAP AS REQUIRED BY CODES.

ABBREVIATIONS

- H&C - HOT & COLD WATER
- FDA - AREA FLOOR DRAIN
- AFF - ABOVE FINISH FLOOR
- BTC - BRANCH TO CONNECTION

PLUMBING SYMBOLS

- HOT OR COLD WATER
- ⊖ DRAIN
- ⊙ FD-A AREA FLOOR DRAIN
- ⊖ FLOOR SINK



WORRELL DESIGN GROUP  
10200 RICHMOND AVE, SUITE 280  
HOUSTON, TEXAS 77042-4191  
4225

01.22.03

FOODSERVICE  
MECHANICAL/  
ELECTRICAL/  
PLUMBING  
PLAN

FSMEP1