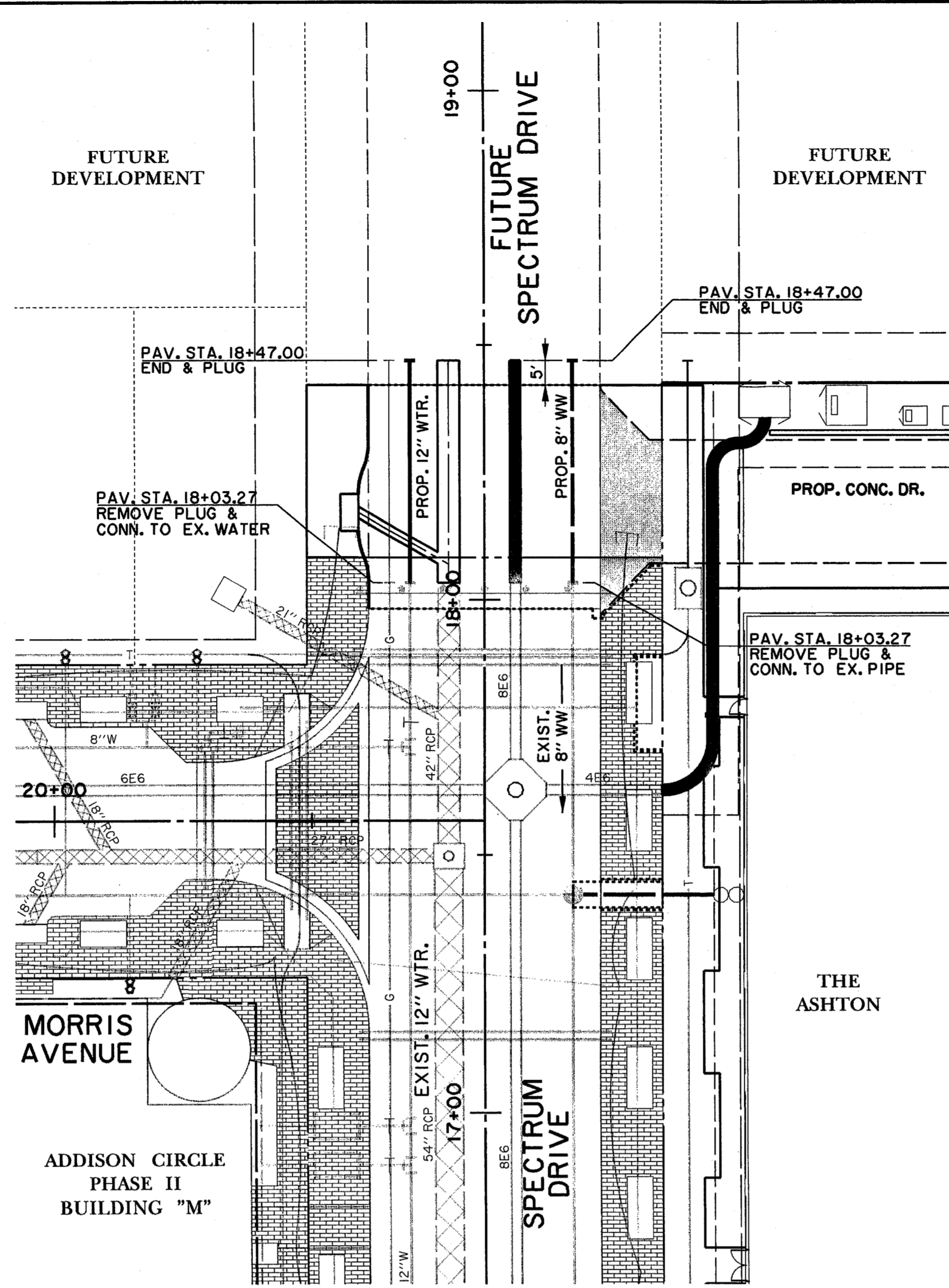
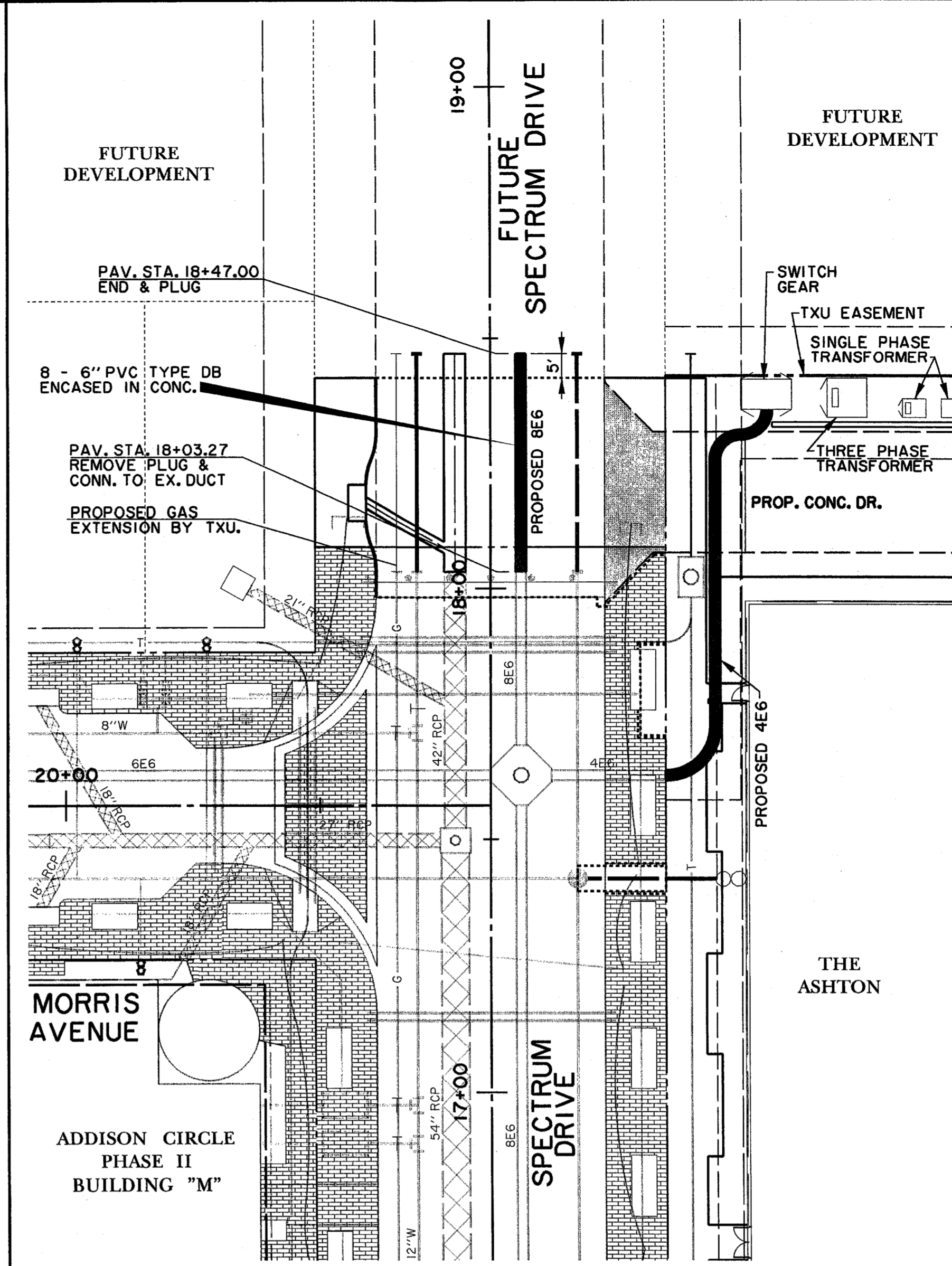


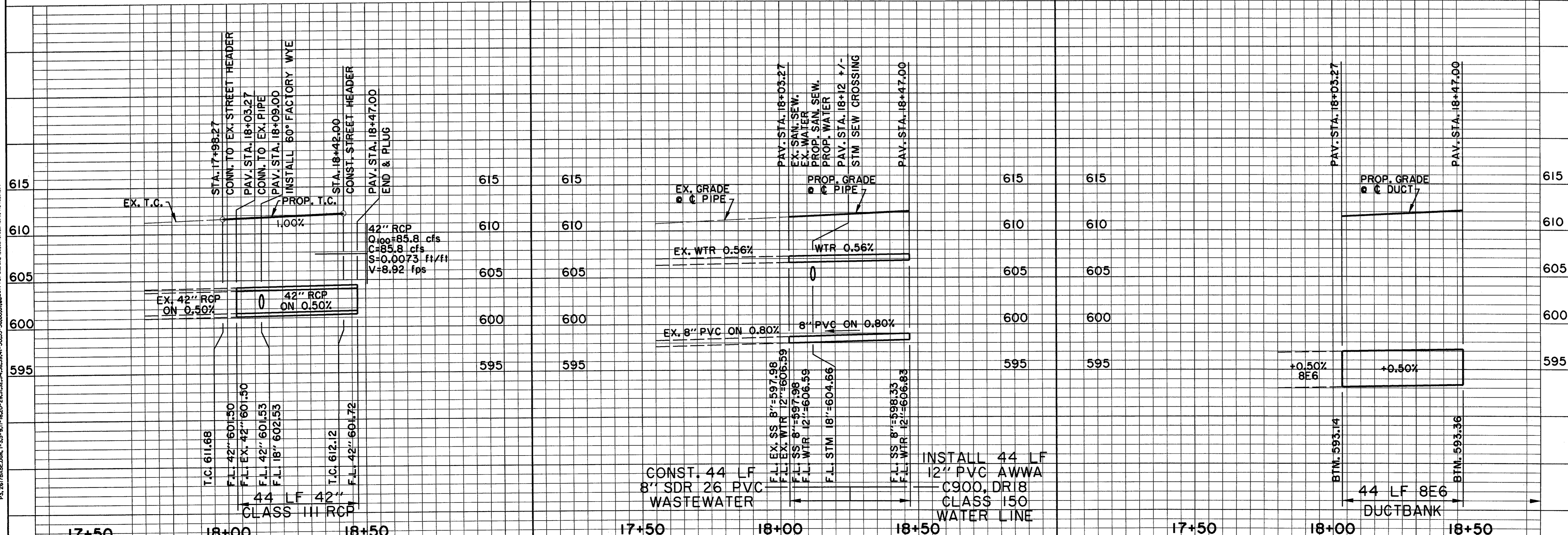
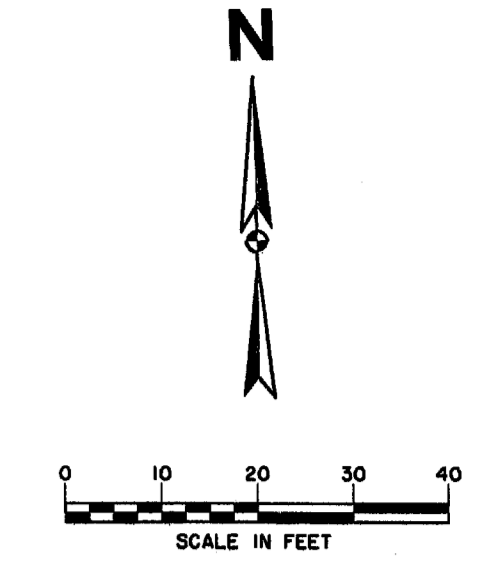
PAVING & DRAINAGE



WATER & WASTEWATER



ELECTRICAL



BENCHMARKS:
 BM#4 'I' CUT AT CENTER OF CURB INLET, 1015 FEET NORTH FROM THE CENTERLINE INTERSECTION OF ADDISON CIRCLE, WEST SIDE OF QUORUM DRIVE, ELEV. 629.36
 TBM 'I' CUT ON EAST END OF 6' INLET NORTH SIDE OF MORRIS & AVE, 200' EAST OF CENTERLINE OF QUORUM DR., ELEV. 616.41

THE SEAL APPEARING ON THIS DOCUMENT WAS AUTHORIZED BY DAVID E. MEYERS, P.E. 81512

DATE	DESCRIPTION	REF NO.
3/30/00	ISSUED FOR CONSTRUCTION	N/A
1/24/00	ISSUED FOR BID	N/A
12/16/99	CITY SUBMITTAL	N/A

PLAN & PROFILE
SPECTRUM DRIVE EXTENSION
THE ASHTON
 PRIVATE
TOWN OF ADDISON, TEXAS
 HUFF - ZOLLERS, INC.
 3131 McKinney Ave., Suite 600, Dallas, TX 75204
 Phone (214) 671-3311/Fax (214) 671-0757

DESIGN	DRAWN	APPR.	SCALE	DATE	PROJECT NO.	NO.
HZI	HZI	DEM	1"=20'	MAR. 00	01-2617-06	C16

PL 261706A.DGN, 1-83
 P2: 261706A.DGN, 1-83
 P3: 261706A.DGN, 1-83
 P4: 261706A.DGN, 1-83
 P5: 261706A.DGN, 1-83
 P6: 261706A.DGN, 1-83
 P7: 261706A.DGN, 1-83
 P8: 261706A.DGN, 1-83
 P9: 261706A.DGN, 1-83
 P10: 261706A.DGN, 1-83
 P11: 261706A.DGN, 1-83
 P12: 261706A.DGN, 1-83
 P13: 261706A.DGN, 1-83
 P14: 261706A.DGN, 1-83
 P15: 261706A.DGN, 1-83
 P16: 261706A.DGN, 1-83
 P17: 261706A.DGN, 1-83
 P18: 261706A.DGN, 1-83
 P19: 261706A.DGN, 1-83
 P20: 261706A.DGN, 1-83
 P21: 261706A.DGN, 1-83
 P22: 261706A.DGN, 1-83
 P23: 261706A.DGN, 1-83
 P24: 261706A.DGN, 1-83
 P25: 261706A.DGN, 1-83
 P26: 261706A.DGN, 1-83
 P27: 261706A.DGN, 1-83
 P28: 261706A.DGN, 1-83
 P29: 261706A.DGN, 1-83
 P30: 261706A.DGN, 1-83
 P31: 261706A.DGN, 1-83
 P32: 261706A.DGN, 1-83
 P33: 261706A.DGN, 1-83
 P34: 261706A.DGN, 1-83
 P35: 261706A.DGN, 1-83
 P36: 261706A.DGN, 1-83
 P37: 261706A.DGN, 1-83
 P38: 261706A.DGN, 1-83
 P39: 261706A.DGN, 1-83
 P40: 261706A.DGN, 1-83
 P41: 261706A.DGN, 1-83
 P42: 261706A.DGN, 1-83
 P43: 261706A.DGN, 1-83
 P44: 261706A.DGN, 1-83
 P45: 261706A.DGN, 1-83
 P46: 261706A.DGN, 1-83
 P47: 261706A.DGN, 1-83
 P48: 261706A.DGN, 1-83
 P49: 261706A.DGN, 1-83
 P50: 261706A.DGN, 1-83
 P51: 261706A.DGN, 1-83
 P52: 261706A.DGN, 1-83
 P53: 261706A.DGN, 1-83
 P54: 261706A.DGN, 1-83
 P55: 261706A.DGN, 1-83
 P56: 261706A.DGN, 1-83
 P57: 261706A.DGN, 1-83
 P58: 261706A.DGN, 1-83
 P59: 261706A.DGN, 1-83
 P60: 261706A.DGN, 1-83
 P61: 261706A.DGN, 1-83
 P62: 261706A.DGN, 1-83
 P63: 261706A.DGN, 1-83
 P64: 261706A.DGN, 1-83
 P65: 261706A.DGN, 1-83
 P66: 261706A.DGN, 1-83
 P67: 261706A.DGN, 1-83
 P68: 261706A.DGN, 1-83
 P69: 261706A.DGN, 1-83
 P70: 261706A.DGN, 1-83
 P71: 261706A.DGN, 1-83
 P72: 261706A.DGN, 1-83
 P73: 261706A.DGN, 1-83
 P74: 261706A.DGN, 1-83
 P75: 261706A.DGN, 1-83
 P76: 261706A.DGN, 1-83
 P77: 261706A.DGN, 1-83
 P78: 261706A.DGN, 1-83
 P79: 261706A.DGN, 1-83
 P80: 261706A.DGN, 1-83
 P81: 261706A.DGN, 1-83
 P82: 261706A.DGN, 1-83
 P83: 261706A.DGN, 1-83
 P84: 261706A.DGN, 1-83
 P85: 261706A.DGN, 1-83
 P86: 261706A.DGN, 1-83
 P87: 261706A.DGN, 1-83
 P88: 261706A.DGN, 1-83
 P89: 261706A.DGN, 1-83
 P90: 261706A.DGN, 1-83
 P91: 261706A.DGN, 1-83
 P92: 261706A.DGN, 1-83
 P93: 261706A.DGN, 1-83
 P94: 261706A.DGN, 1-83
 P95: 261706A.DGN, 1-83
 P96: 261706A.DGN, 1-83
 P97: 261706A.DGN, 1-83
 P98: 261706A.DGN, 1-83
 P99: 261706A.DGN, 1-83
 P100: 261706A.DGN, 1-83