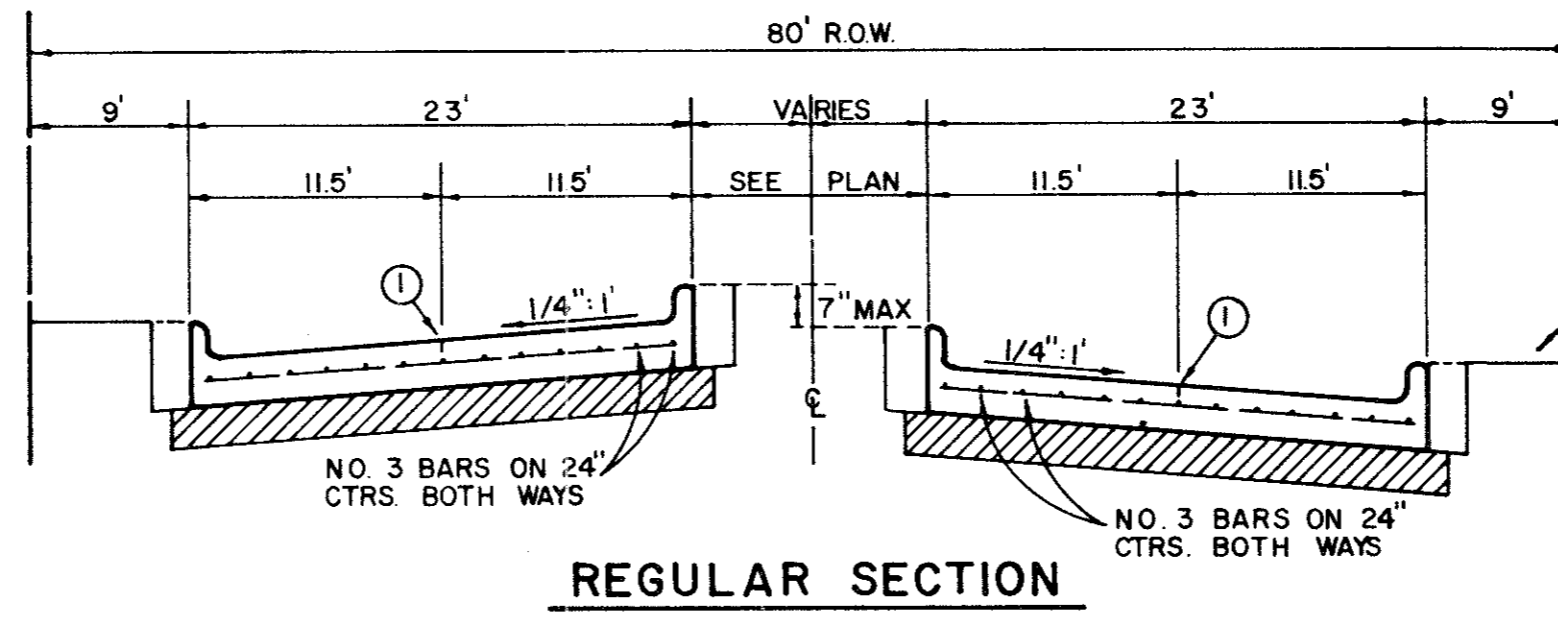
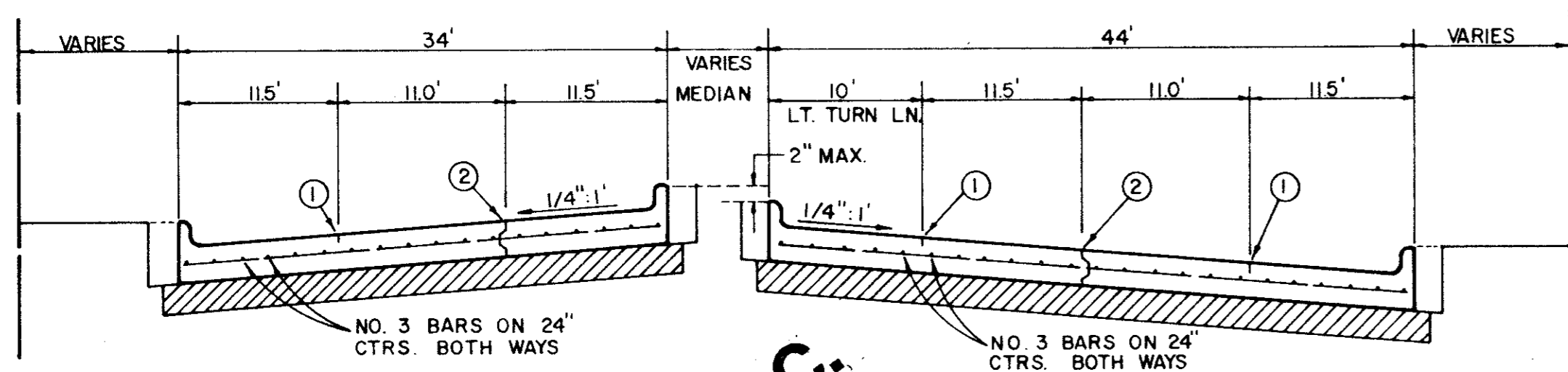
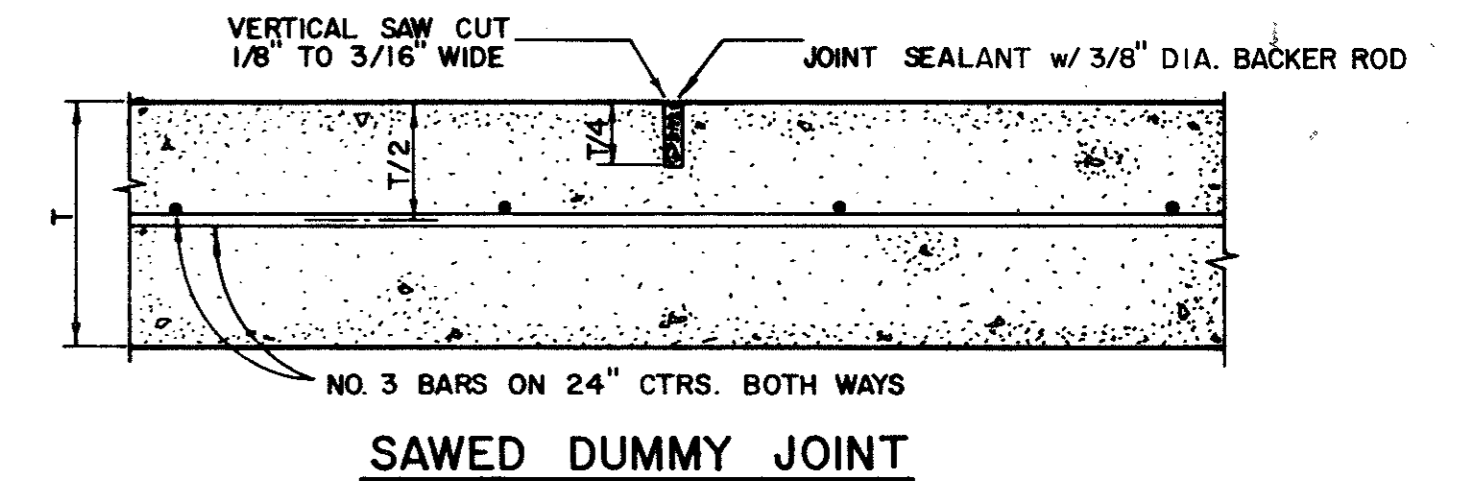


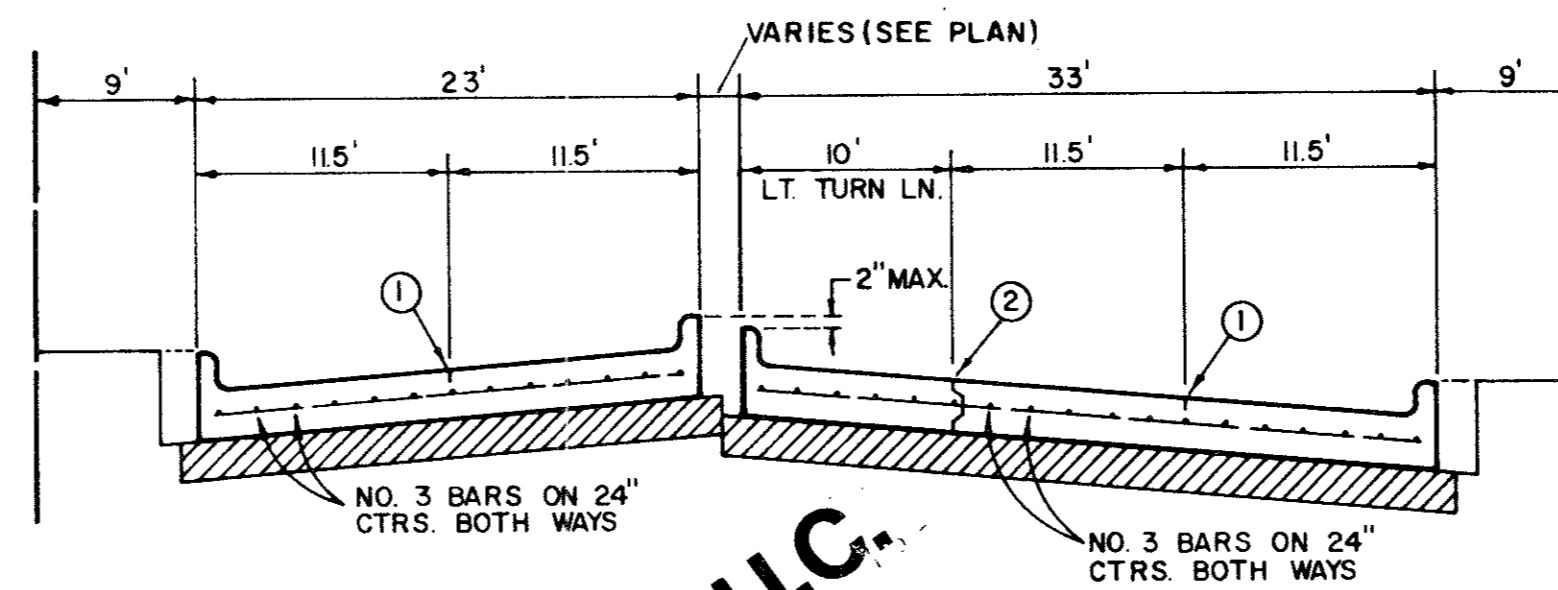
REGULAR SECTION



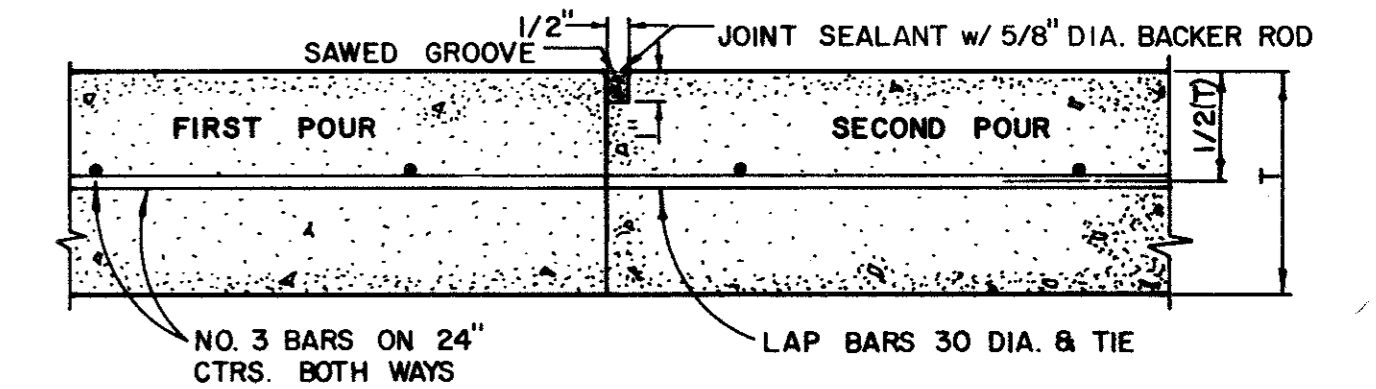
REGULAR SECTION



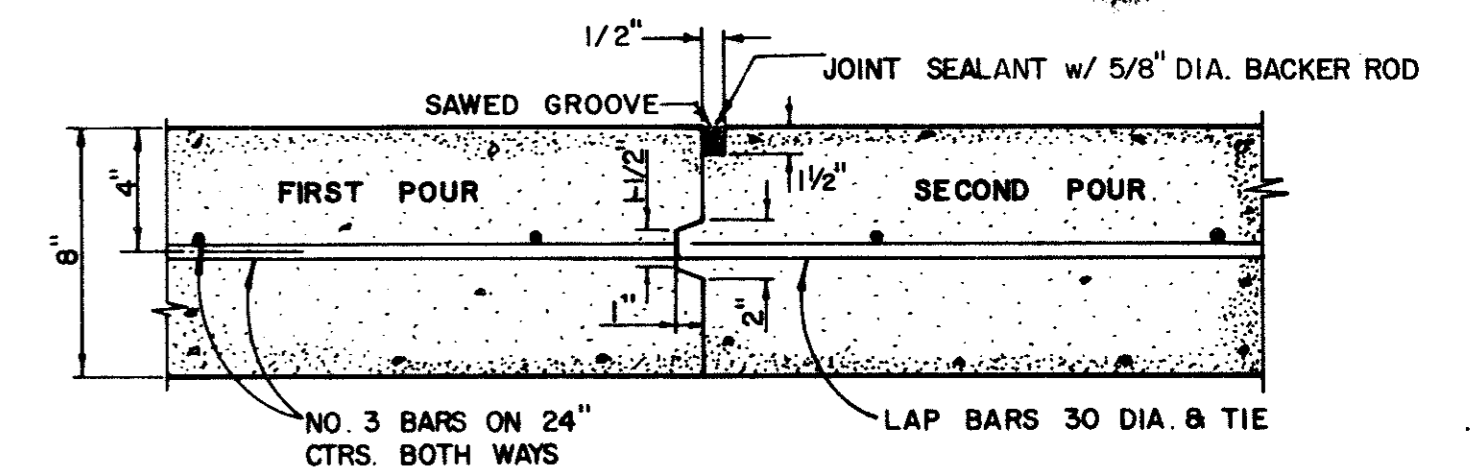
N.I.C.
LEFT TURN SECTION
MAJOR ARTERIAL



N.I.C.
LEFT TURN SECTION
MINOR ARTERIAL



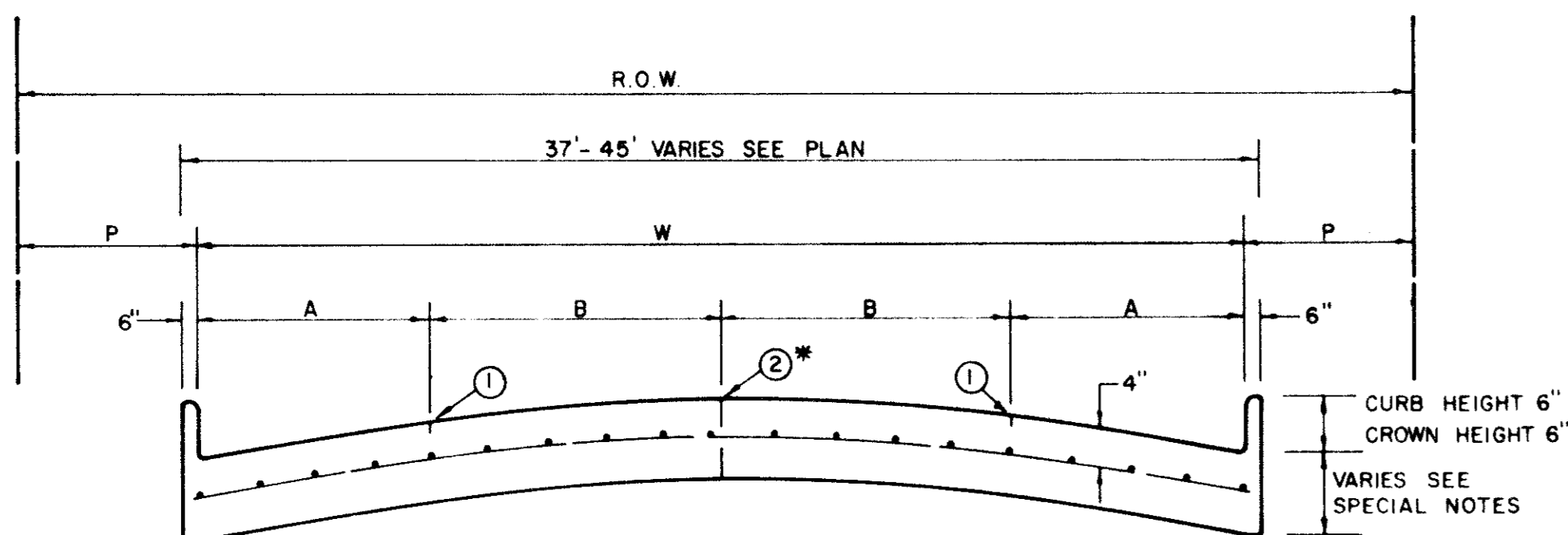
CONSTRUCTION JOINT FOR 6 INCH PAVEMENT



CONSTRUCTION JOINT FOR 8 INCH PAVEMENT

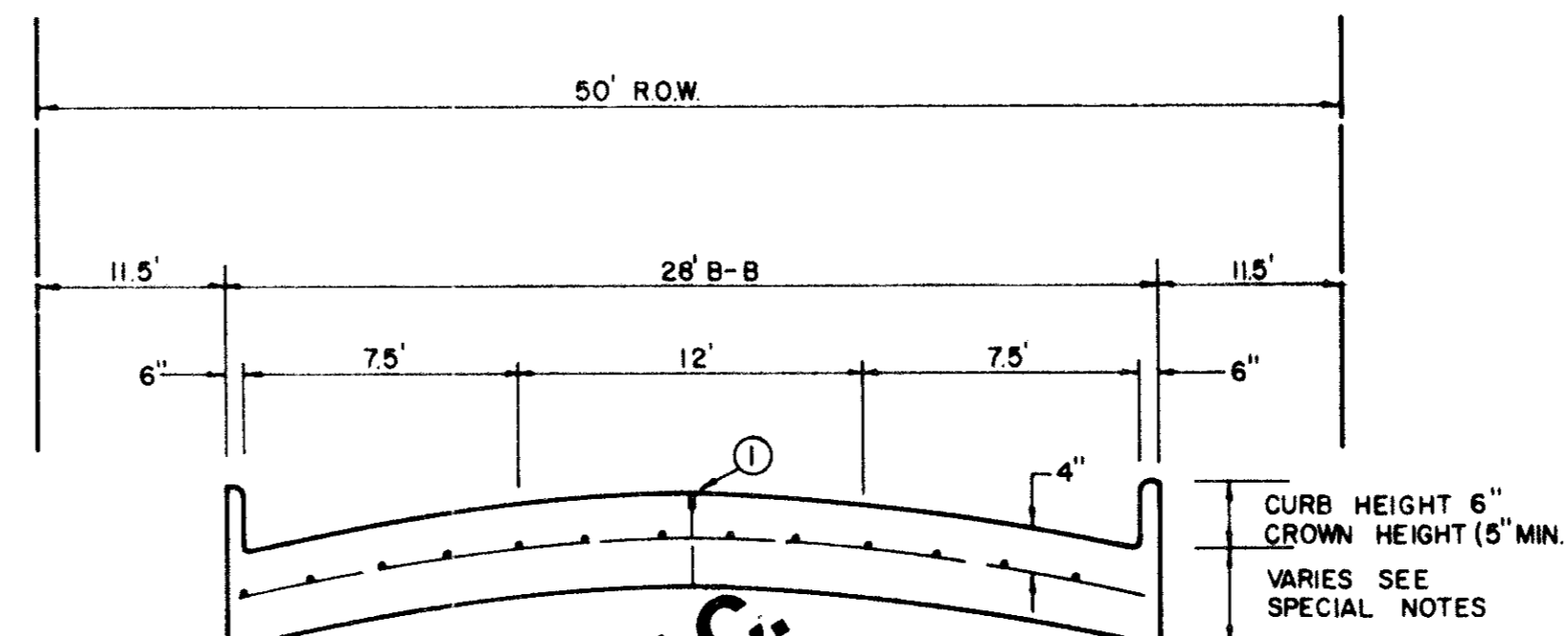
GENERAL NOTES

- A. GENERAL PAVEMENT THICKNESS FOR STREETS SHALL BE AS SPECIFIED BELOW IN SPECIAL NOTES.
- B. STANDARD SPECIFICATIONS REINFORCED CONCRETE PAVEMENTS
 1. ALL CURBS SHALL BE PLACED INTEGRAL WITH PAVEMENT
 2. CURBS SHALL MEET THE SAME COMPRESSIVE STRENGTH AS SPECIFIED FOR THE CONCRETE PAVEMENT.
 3. DETAIL AND ARRANGEMENT OF JOINTS, ALL TYPES, SHALL BE AS SHOWN ON THE STANDARD CONSTRUCTION DETAILS, OR AS APPROVED BY ENGINEER.
 4. BAR LAPS SHALL BE 30 DIAMETERS.
- C. SUBGRADE UNDER ALL PAVEMENT SHALL BE 6 INCHES THICK AND SHALL BE STABILIZED WITH 6 PERCENT BY WEIGHT OF HYDRATED LIME (27 LBS./S.Y.) AND COMPACTED TO A DENSITY NOT LESS THAN 95 PERCENT AS DETERMINED BY A.A.S.H.O. T-99. LABORATORY TESTS MAY BE SUBMITTED TO THE ENGINEER FOR APPROVAL TO LOWER AMOUNT OF LIME REQUIRED.
- D. BAR CHAIRS OR AN APPROVED SUPPORTING DEVICE SHALL BE FURNISHED.



STREET TYPE	STREET WIDTH (W)	A	B	ROW WIDTH	P
COLLECTOR	36'	8'	10'	60'	11.5'
COLLECTOR	40'	8' OR 10'	10' OR 12'	60'	9.5'
COLLECTOR	44'	11'	11'	65'	10.0'

COLLECTOR STREET

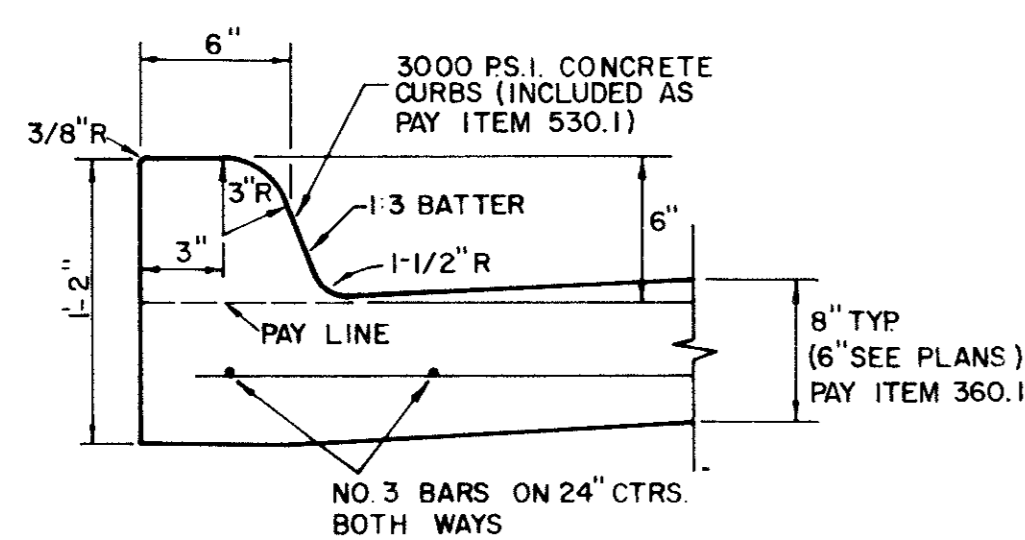


ONE MOVING LANE / TWO PARKING LANES

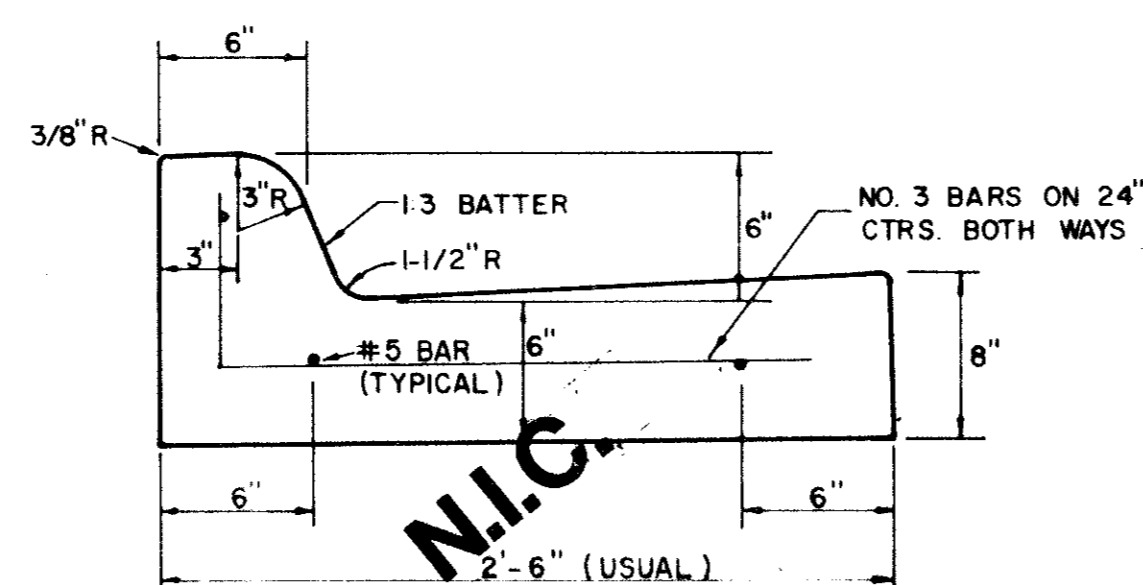
N.I.C.
LOCAL STREET

REINFORCED CONCRETE PAVEMENT

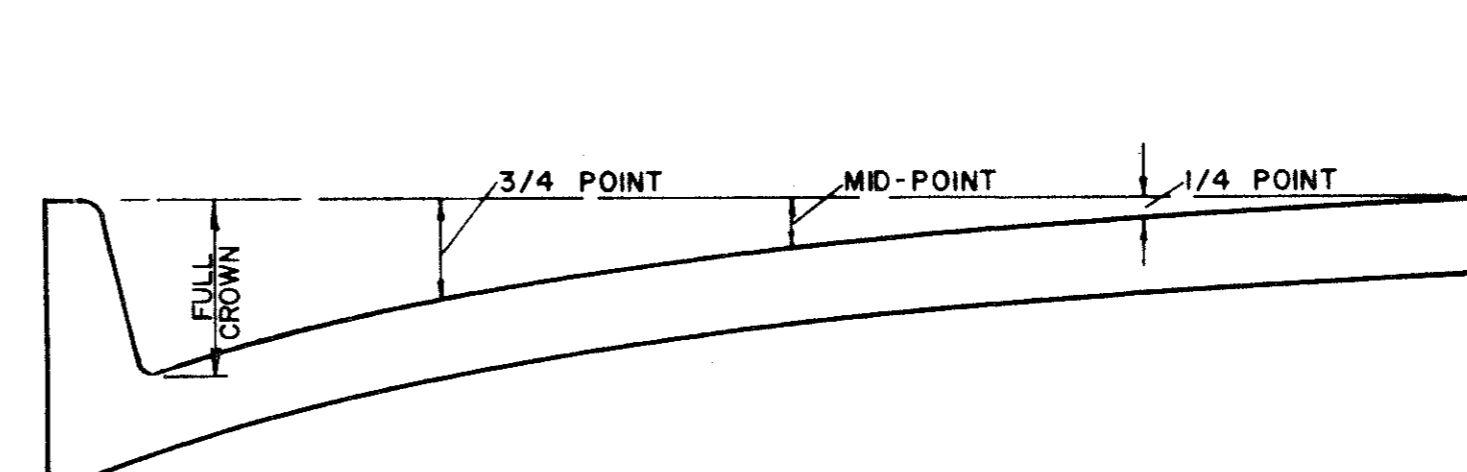
- ALL REINFORCING BARS SHALL BE NO. 3 TRANSVERSE BARS TO BE SPACED ON 2'-0" CENTERS, LONGITUDINAL BARS TO BE SPACED ON 2'-0" EXCEPT WHERE NOTED.
- UNDIVIDED STREETS—PROVIDE 4" DBL.—REF YELLOW & BUTON P-117-Y PATTERNS TO BE ESTABLISHED BY ENGINEER. SEE DETAIL SHEET
- ① SAWED LONGITUDINAL DUMMY JOINT.
 - ② CONSTRUCTION JOINT (FULL WIDTH PAVT IS ALLOWED WHERE APPROVED BY ENGINEER.
 - ③ FINISH SHALL BE TRANSVERSE WITH TRAFFIC LANES AND SHALL BE STEEL TINED BROOM FINISH.



INTEGRAL CURB



SEPARATE CURB AND GUTTER



ROADWAY WIDTH (W)	TOTAL CROWN HEIGHT	3/4 POINT	MID-POINT	1/4 POINT
26'	6"	3-3/8"	1-1/2"	3/8"
36'	6"	3-3/8"	1-1/2"	3/8"
44'	6"	3-3/8"	1-1/2"	3/8"
48'	6"	3-3/8"	1-1/2"	3/8"

TABLE OF CROWN HEIGHTS AND ORDINATES FOR VARIOUS PARABOLIC SECTIONS



TYPICAL JOINT DETAIL

No.	Revision	By	Date

STANDARD CONSTRUCTION DETAILS PAVING

STREET CROWNS & JOINTS

GINN, INC.
Consulting Engineers Dallas, Texas

Designed - Drawn - Date - June, 1990 Job No. - 90439
Approved - Checked - Scale - Sheet M4 of 12

