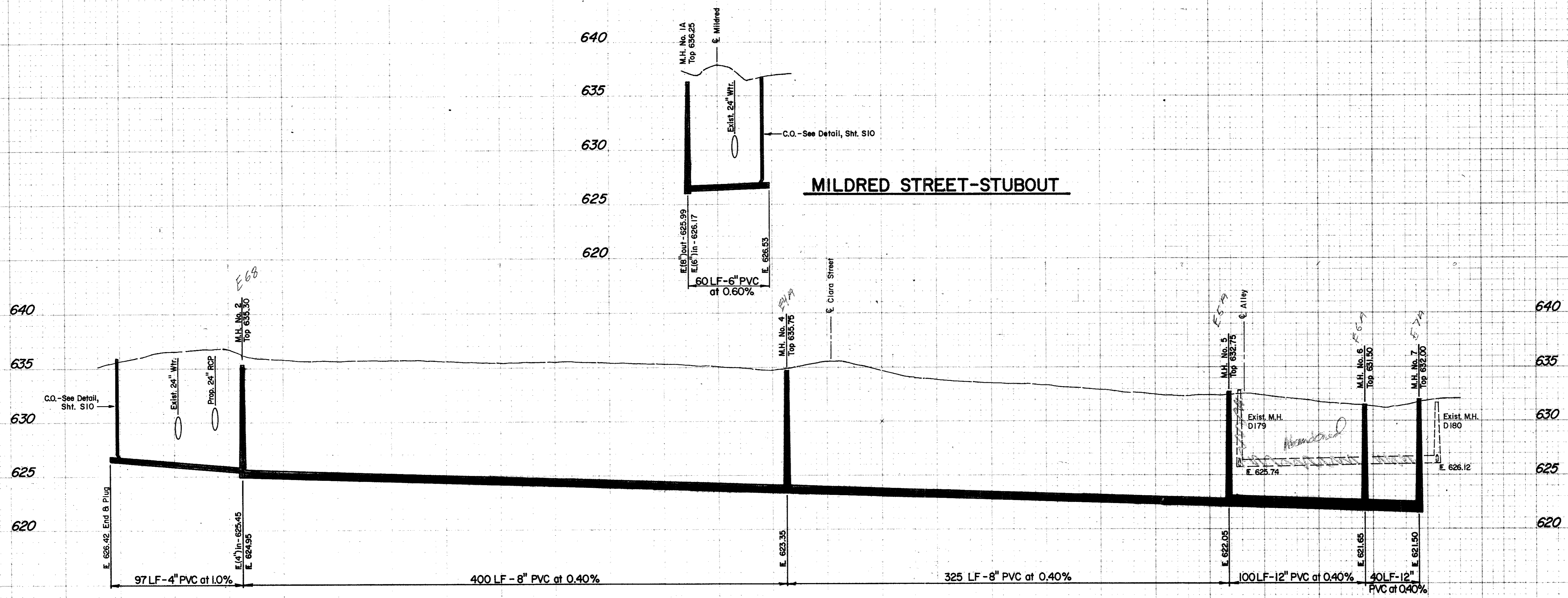
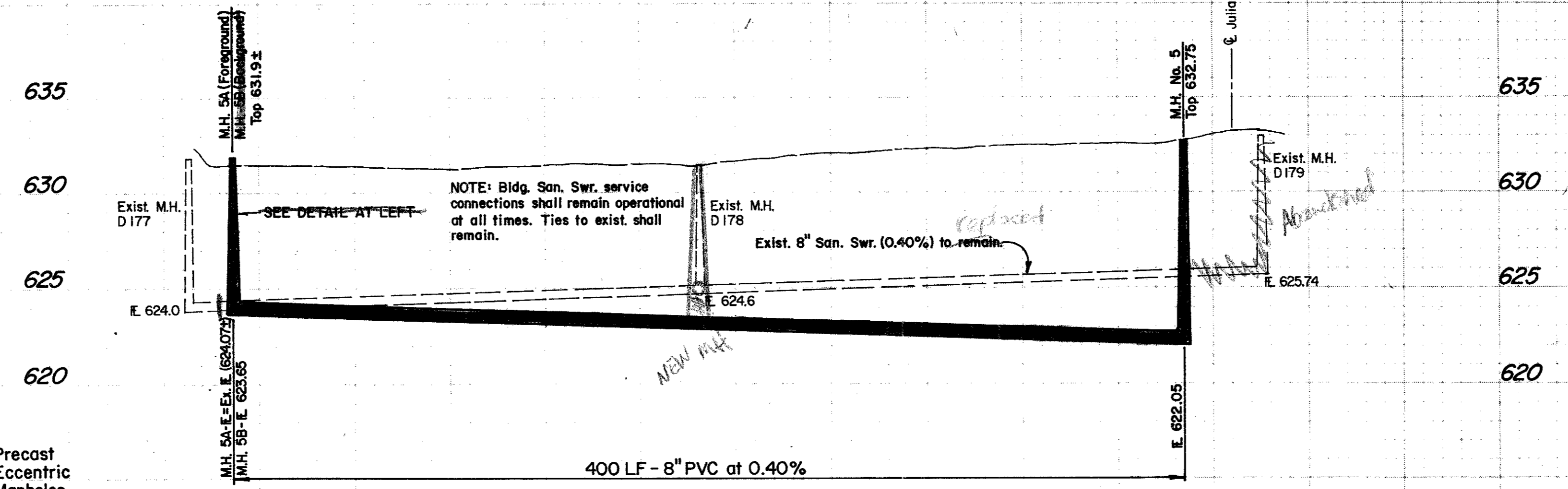


FINAL SURVEY

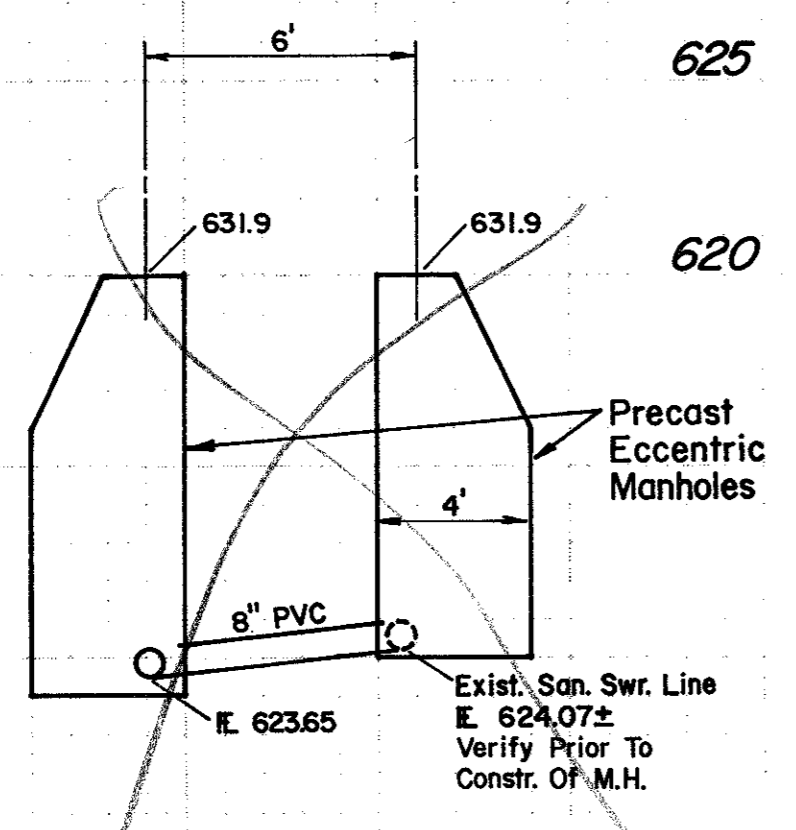
ORIGINAL SURVEY



JULIAN STREET

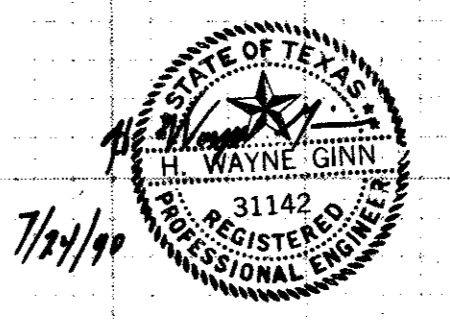


ALLEY



DETAIL
No Scale

NOTE: Bldg. San. Swr. service connections shall remain operational at all times. Ties to exist shall remain.



No.	Revision	By	Date
TOWN OF ADDISON DALLAS COUNTY, TEXAS			
As Builts SANITARY SEWER IMPROVEMENTS			
PROFILES JULIAN STREET - ALLEY			
GINN, INC. Consulting Engineers Dallas, Texas			
Designed - GF	Drawn - TEC	Date - June, 1990	Job No. - 90443
Approved - HWG	Checked - GF	Scale - 1" = 40' H / 1" = 5' V	Sheet 95 of 10