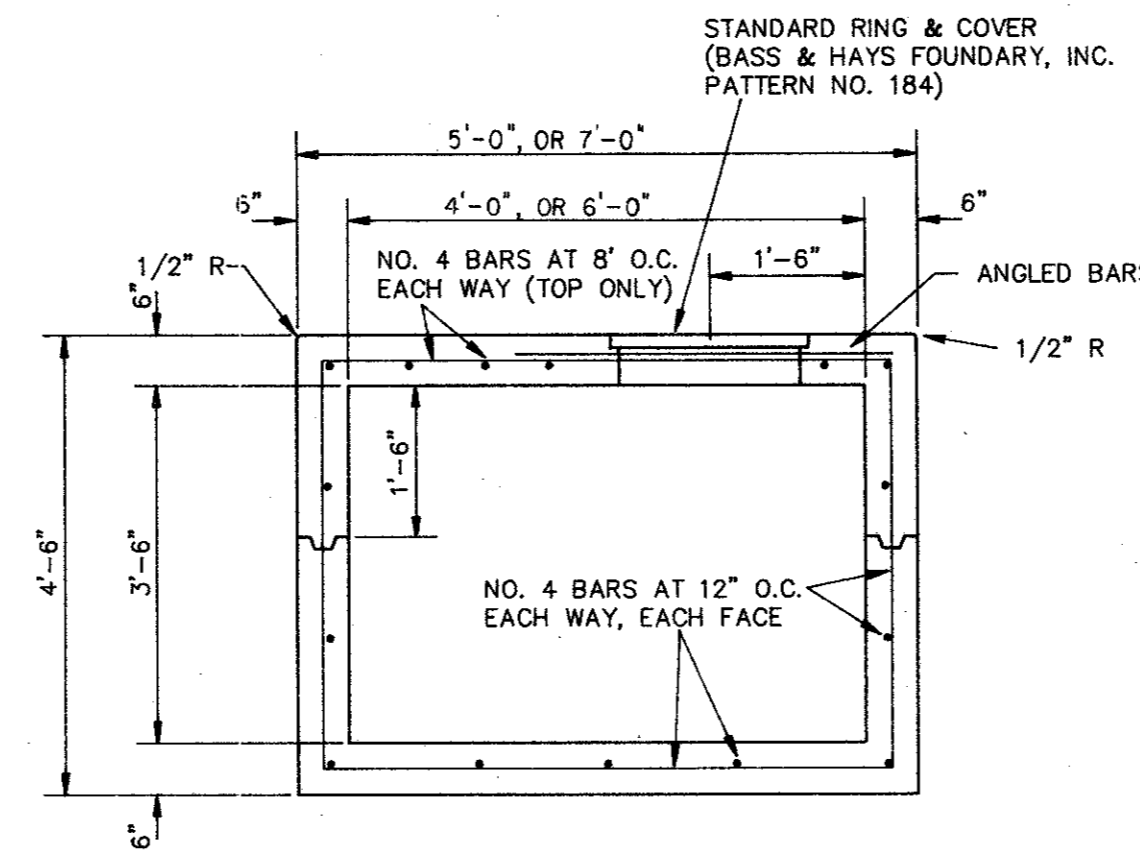
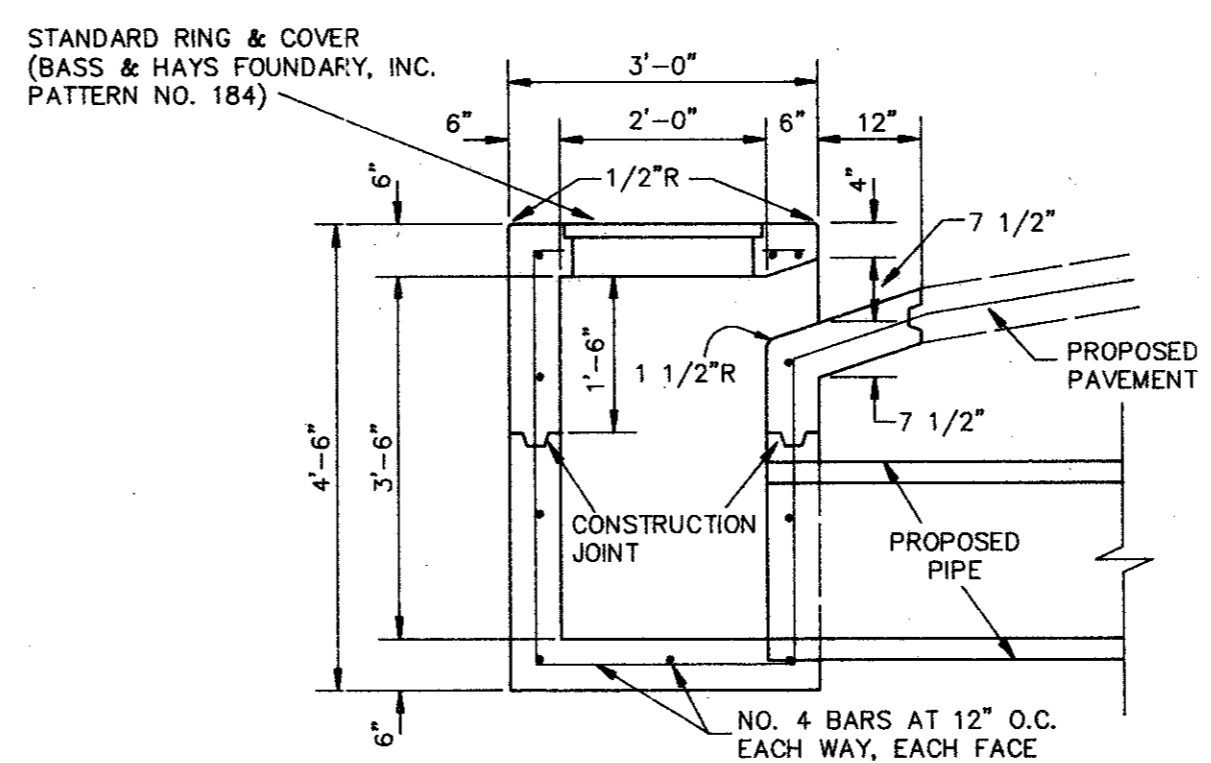


NOTE: PLATE TO BE INSTALLED ON NORTH OPENING OF INLET TO ALLOW BACKFILL AGAINST INLET BOX.

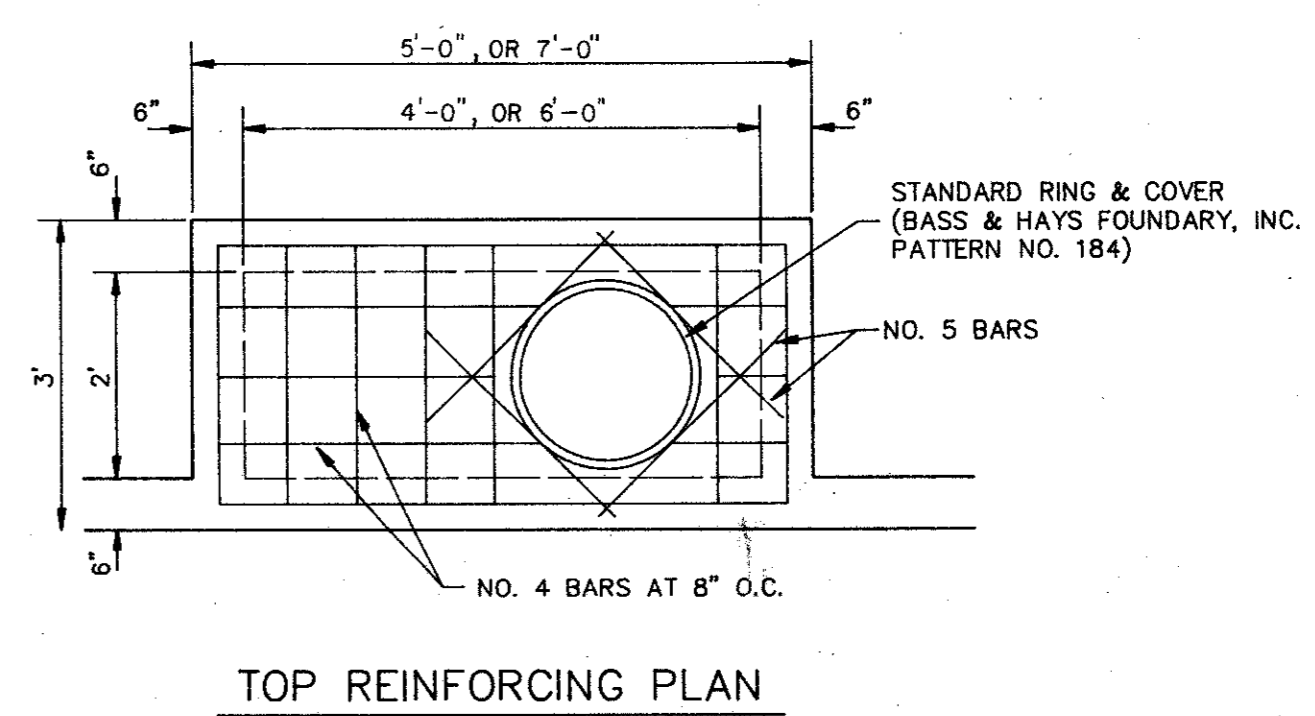
EXISTING Y-INLET MODIFICATION DETAIL
NOT TO SCALE



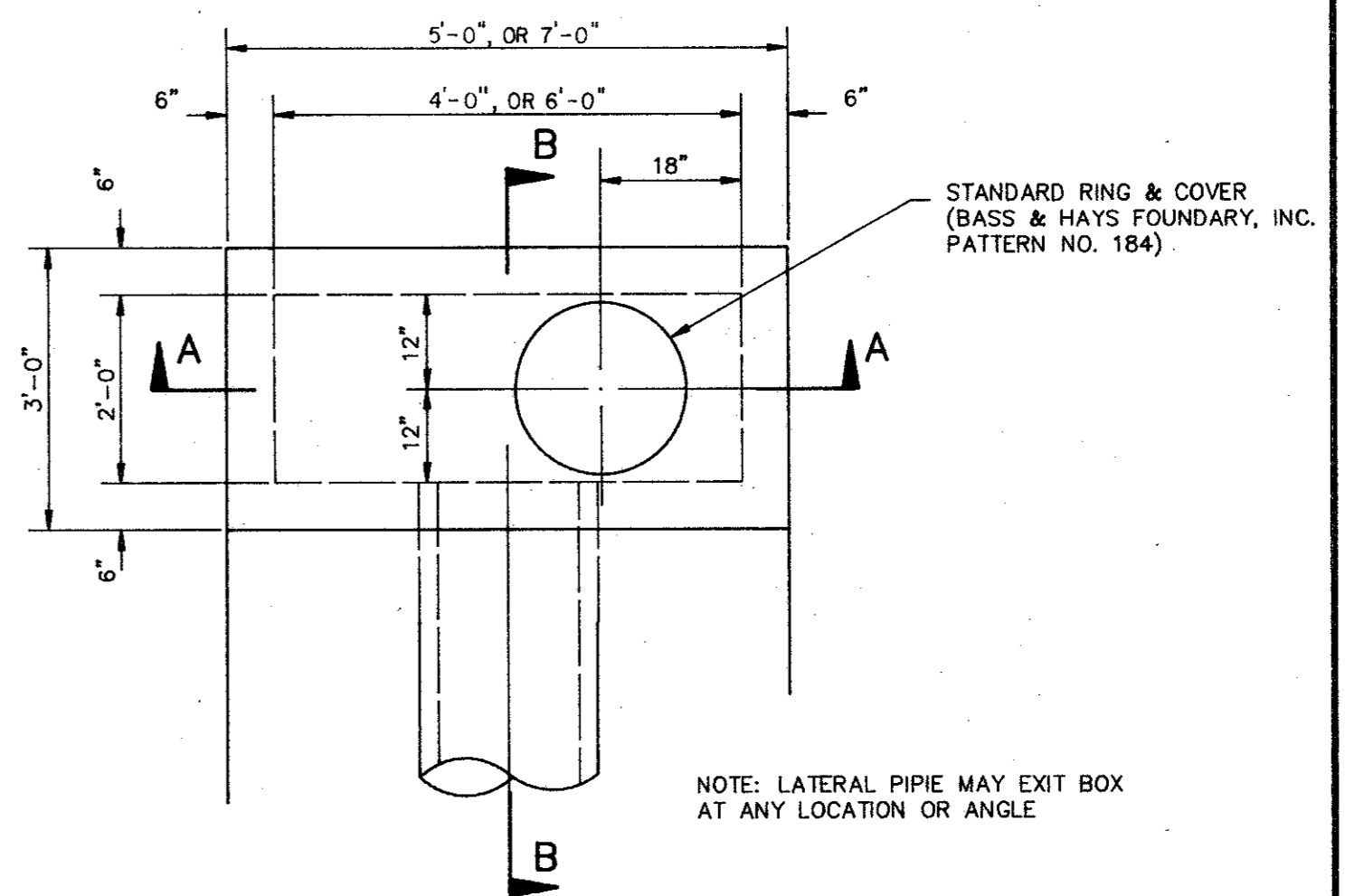
SECTION A-A



SECTION B-B



TOP REINFORCING PLAN



PLAN VIEW

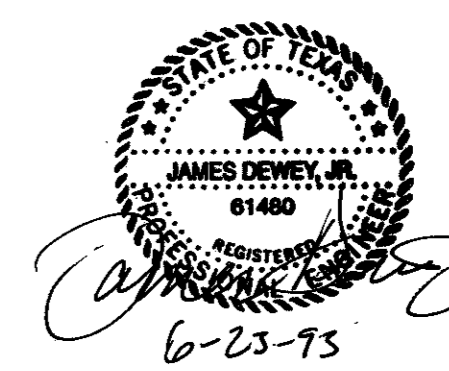
CURB INLET DETAILS
NOT TO SCALE

NOTES (FOR BOTH INLETS)

- CONCRETE SHALL HAVE A MINIMUM STRENGTH OF 3,000 P.S.I. AT 28 DAYS.
- REINFORCEMENT, STRUCTURAL STEEL AND CASTINGS SHALL CONFORM TO T.H.D. SPECIFICATIONS.
- LATERAL PIPE MAY ENTER INLET AT ANY LOCATION.
- REINFORCING STEEL SHALL BE A MIN. OF 1 1/4" FROM ANY EDGE OF CONCRETE.
- TOP OF INLETS SHALL HAVE A 1/4" MORTAR TOPPING WITH A FLOAT FINISH, FACE OF CURB INLET SHALL HAVE A 1/2" MORTAR SURFACE WITH A TROWEL FINISH.

BENCH MARK: SQUARE CUT ON CONCRETE VAULT AT THE NORTHEAST CORNER OF BELTLINE ROAD AND ADDISON ROAD. ELEVATION 634.20
BENCH MARK: BRASS CAP FOUND ON TOP OF INLET WEST SIDE OF ADDISON ROAD 1000'± NORTH OF BELT LINE ROAD. ELEVATION 628.21

AS-BUILT



REVISIONS:	
DATE	DESCRIPTION
2/25/93	CHANGED 24" RCP TO 18" RCP
3/15/93	CHANGED 4' C.I. TO 6' C.I.
4/6/93	ADDED Y-INLET MODIFICATION DTL.

PREPARED BY:
DEWEY & ASSOCIATES
ENGINEERING, SURVEYING
LAND PLANNING, CAD DESIGNS
2505 TEXAS DRIVE, SUITE 110 - IRVING, TEXAS 75062 - 214/255-1501

PREPARED FOR:
OUTBACK STEAKHOUSE
550 NORTH REO STREET, SUITE 204
TAMPA, FLORIDA 33609
PHONE: (813) 282-1225
FAX: (813) 282-1209

OUTBACK STEAKHOUSE
QUORUM CENTRE ADDITION
ADDISON ROAD
TOWN OF ADDISON, TEXAS

SHEET TITLE	
STORM DRAIN DETAILS	
DATE:	FEB. 19, 1993
SCALE:	AS SHOWN
DRAWN BY:	SAS (ACAD)
CHECKED BY:	JDJ
SHEET NO.	C3 OF 5