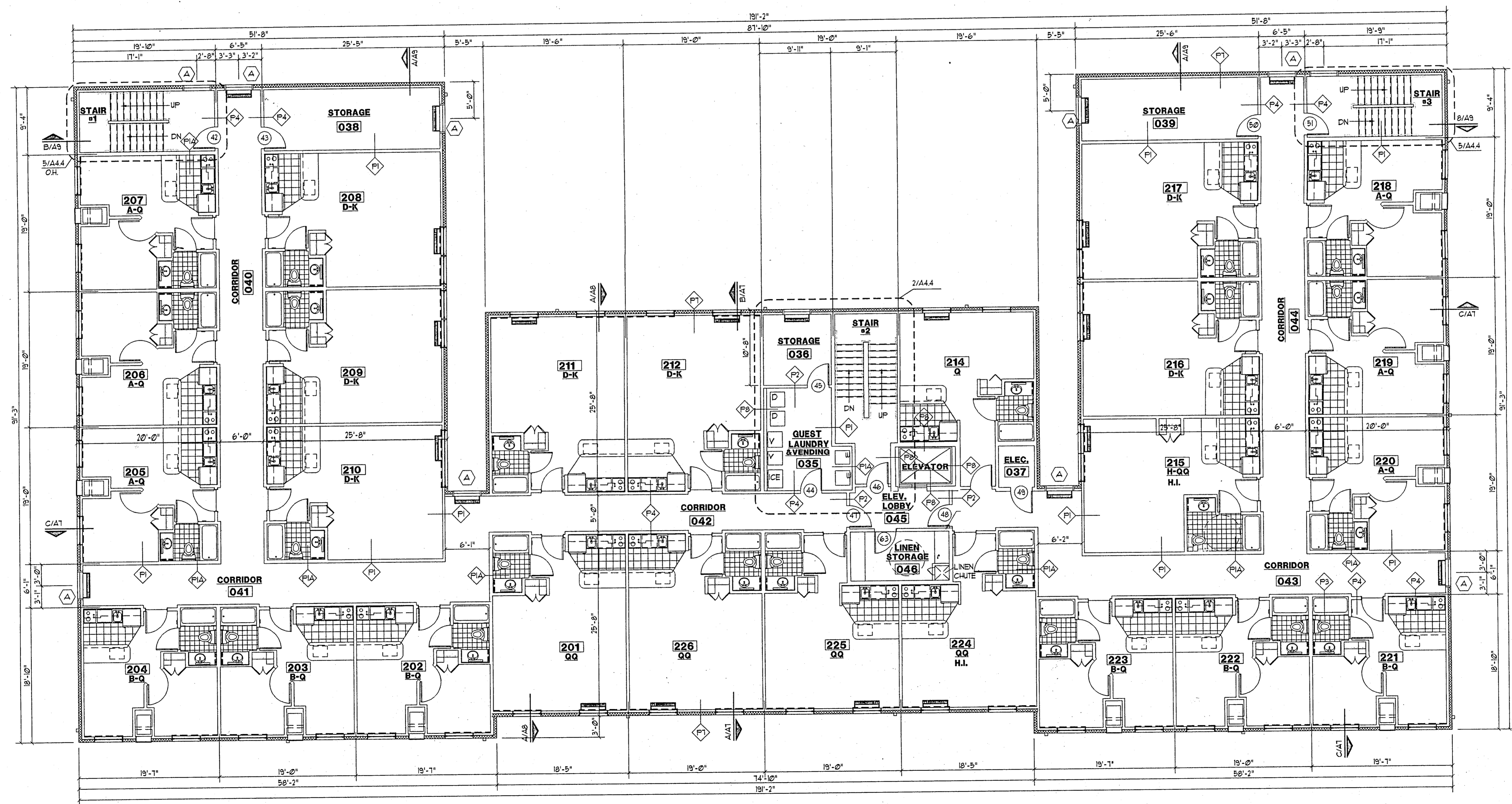


2 PARTITION SCHEDULE
SCALE: 1/8" = 1'-0" DET: 3/4" x 1/2"

- NOTES:
- (*) REF. TO STRUCTURAL FOR SHEAR WALL LOCATIONS AND DETAILS.
 - AT DOUBLE LAYER INSTALLATIONS, APPLY FIRST LAYER VERTICAL, AND FACE LAYER HORIZONTAL OFFSETTING JOINTS 16". SCREW LAYERS ON RCI SIDE AND NAIL ON OPPOSITE SIDE.
 - ALL BATH ROOMS AND KITCHEN AREA TO HAVE MOISTURE RESISTANT GYP. BOARD



1 SECOND FLOOR PLAN
SCALE: 1/8" = 1'-0" DET: 3/4" x 1/2"

