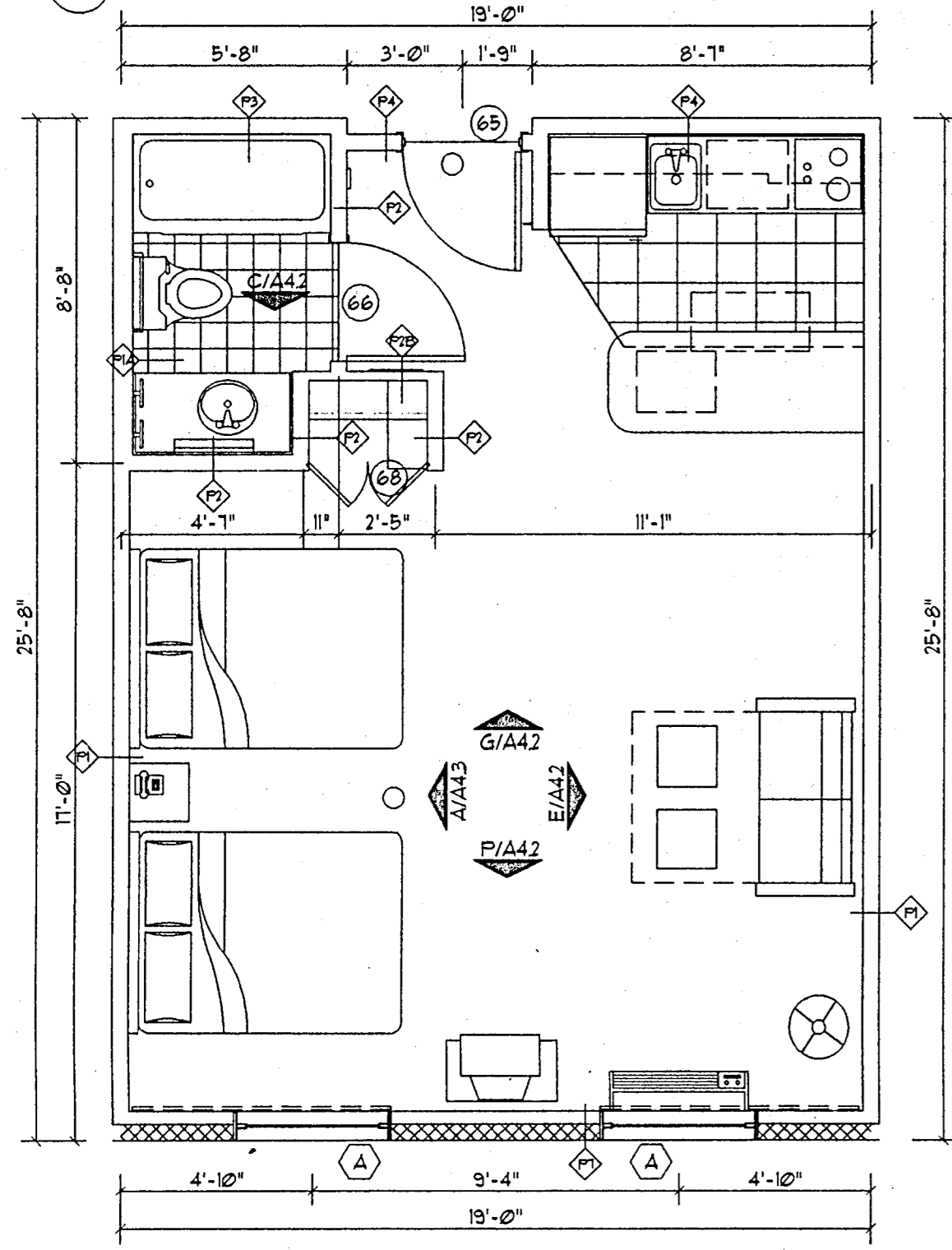
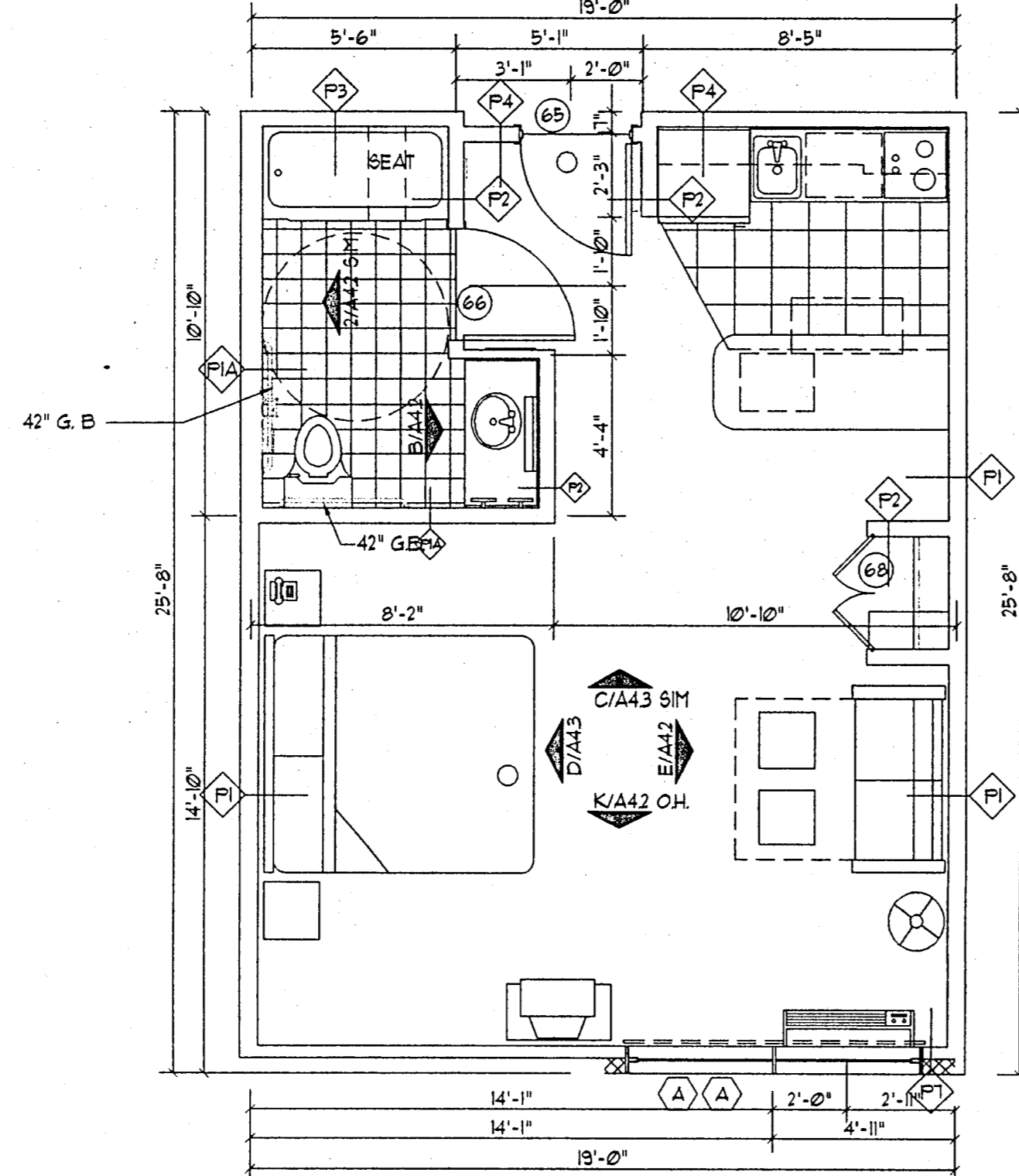


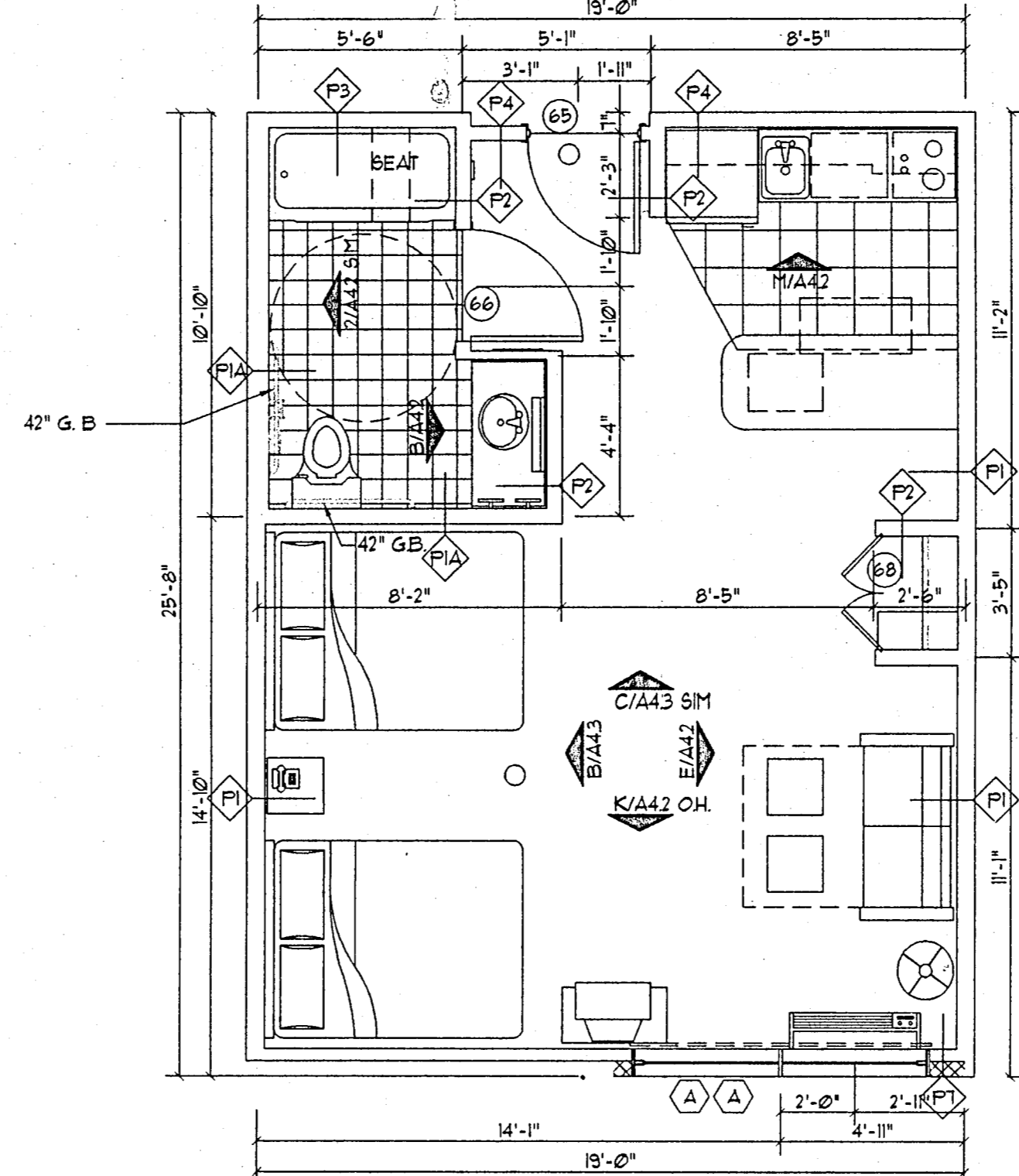
21A REF TO A4.3 FOR TYPICAL NOTES



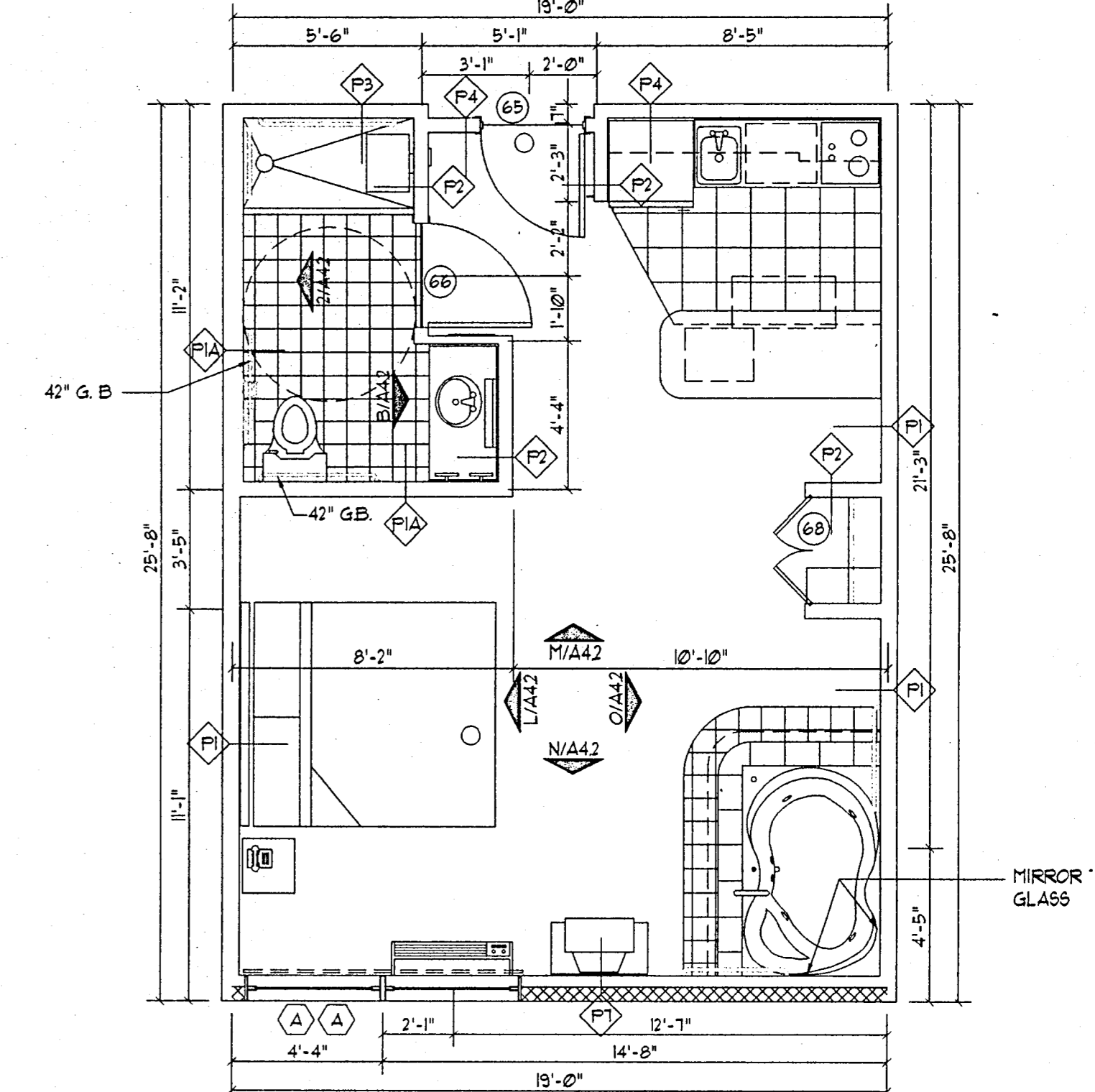
1 TYPICAL SUITE - G-QQ  
SCALE: 1/4" = 1'-0"



2 HANDICAP SUITE - H-K  
SCALE: 1/4" = 1'-0"



3 HANDICAP SUITE - H-QQ  
SCALE: 1/4" = 1'-0"

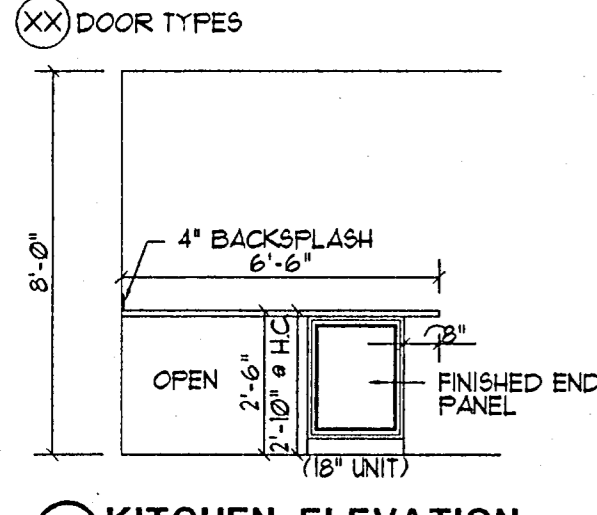


4 HANDICAP SUITE - H-K-J  
SCALE: 1/4" = 1'-0"

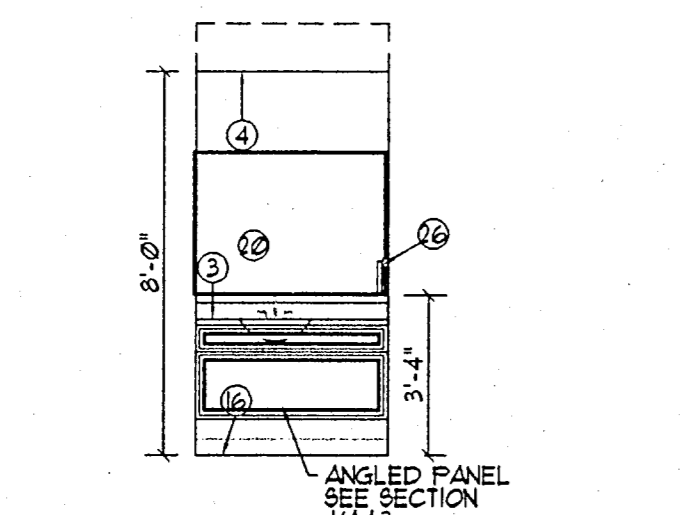
ROOM FINISH SCHEDULE:

ROOM	FLOOR	BASE	WALLS	CEILING	HEIGHT	REMARKS
<b>TYPICAL SUITE</b>						
BATH	8"X8" TILE	6" TILE	TEXTURED	PTD. GYP.	8'-0"	KNOCKDOWN WALLS 3" SOUND BATT ABOVE CEILING
KITCHEN	2"X2" VINYL TILE ALL ROOMS	VINYL	TEXTURED	TEXTURED	8'-0"	ENAMEL PAINT IN KITCHENS
BEDROOM	CARPET	CARPET	TEXTURED	TEXTURED	8'-0"	ENAMEL PAINT IN KITCHENS
<b>1 BED SUITE</b>						
BATH	8"X8" TILE	6" TILE	TEXTURED	PTD. GYP.	8'-0"	KNOCKDOWN WALLS 3" SOUND BATT ABOVE CEILING
KITCHEN	2"X2" VINYL TILE ALL ROOMS	VINYL	TEXTURED	TEXTURED	8'-0"	ENAMEL PAINT IN KITCHENS
BEDROOM	CARPET	CARPET	TEXTURED	TEXTURED	8'-0"	ENAMEL PAINT IN KITCHENS
SITTING	CARPET	CARPET	TEXTURED	TEXTURED	8'-0"	ENAMEL PAINT IN KITCHENS
<b>2 BED SUITE</b>						
BATH			TEXTURED	PTD. GYP.	8'-0"	3" SOUND BATT ABOVE CEILING
KITCHEN		VINYL	TEXTURED	TEXTURED	8'-0"	3" SOUND BATT ABOVE CEILING
BEDROOM	CARPET	CARPET	TEXTURED	TEXTURED	8'-0"	
<b>DB/DB SUITE</b>						
BATH			TEXTURED	PTD. GYP.	8'-0"	3" SOUND BATT ABOVE CEILING
KITCHEN		VINYL	TEXTURED	TEXTURED	8'-0"	
BEDROOM	CARPET	CARPET	TEXTURED	TEXTURED	8'-0"	
<b>HANDICAP SUITE</b>						
BATH	8"X8" TILE	6" TILE	TEXTURED	PTD. GYP.	8'-0"	3" SOUND BATT ABOVE CEILING
KITCHEN	2"X2" VINYL TILE ALL ROOMS	VINYL	TEXTURED	TEXTURED	8'-0"	ENAMEL PAINT IN KITCHENS
BEDROOM	CARPET	CARPET	TEXTURED	TEXTURED	8'-0"	

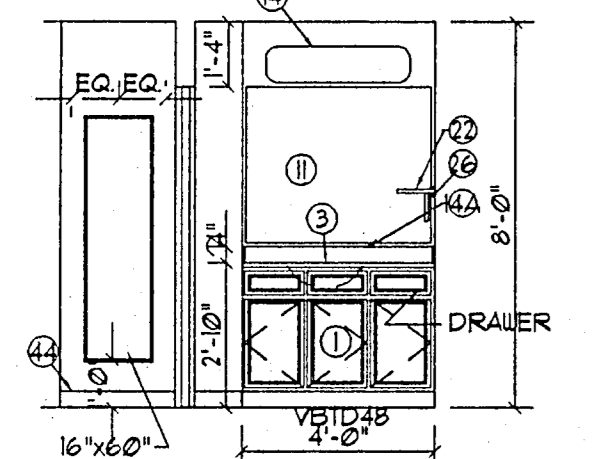
1. 4" VINYL BASE - BASE BID. ALT. BID. 4" VINYL COVE BASE  
2. (1) FIRST FLOOR CEILING HEIGHTS - 9'-0" NOTE: KNOCKDOWN FINISH ALL WALLS



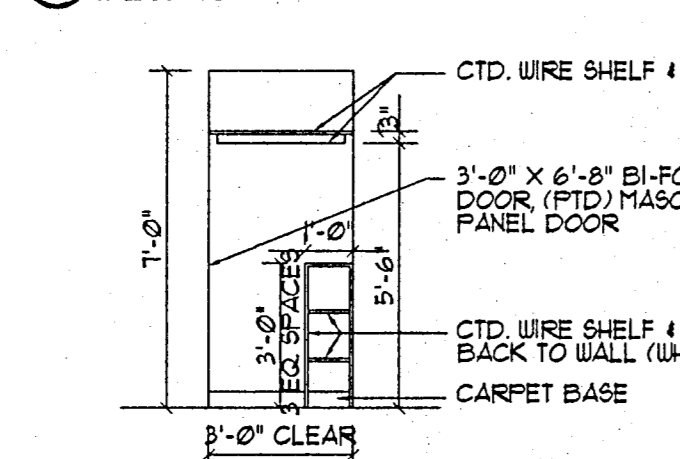
A KITCHEN ELEVATION  
SCALE: 3/8" = 1'-0"



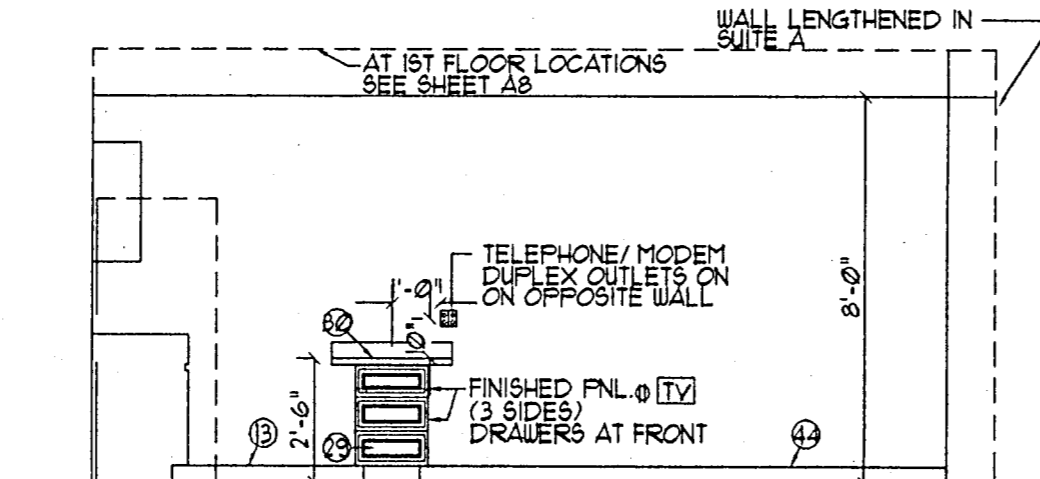
B HANDICAP LAVATORY ELEVATION  
SCALE: 3/8" = 1'-0"



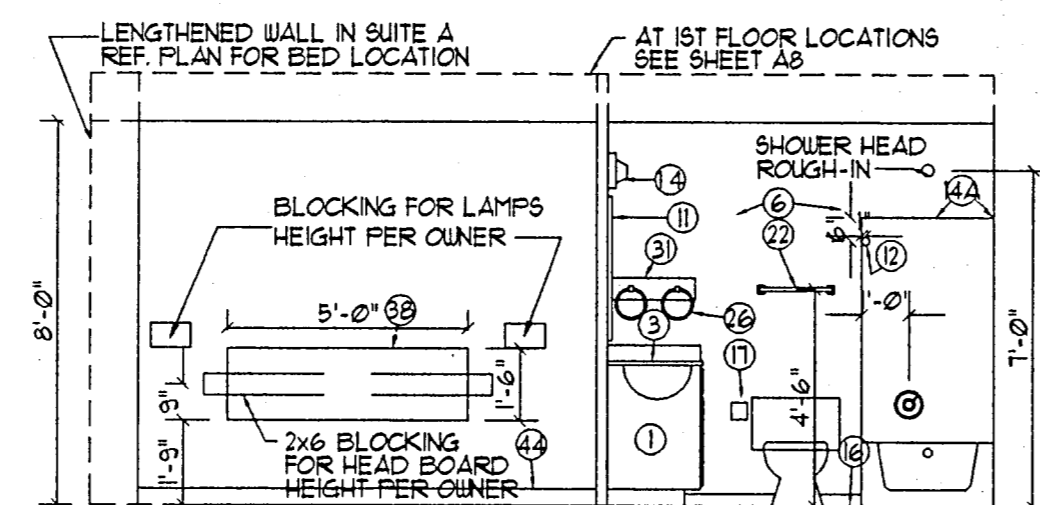
C ELEVATION @ LAVATORY  
SCALE: 3/8" = 1'-0"



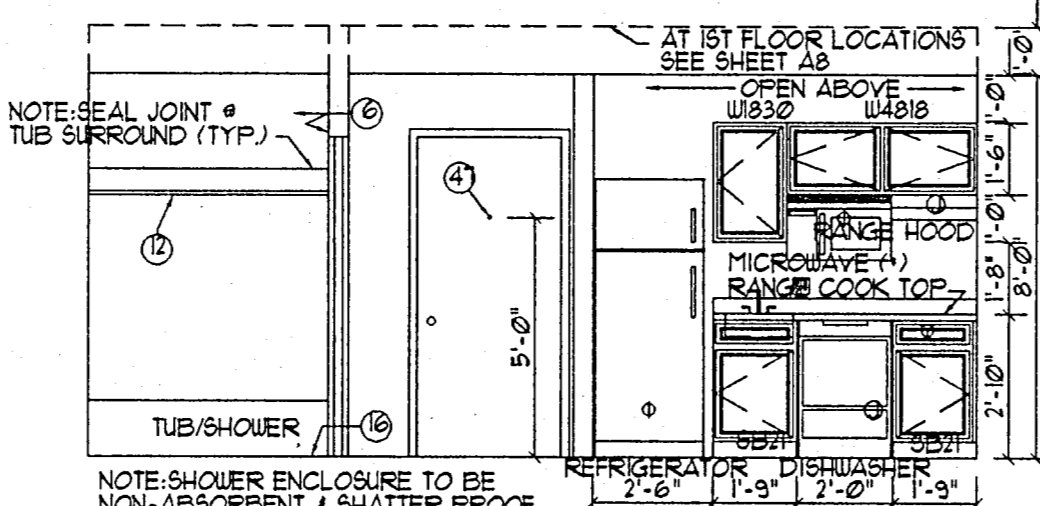
D ELEVATION @ BEDROOM CLOSET  
SCALE: 3/8" = 1'-0"



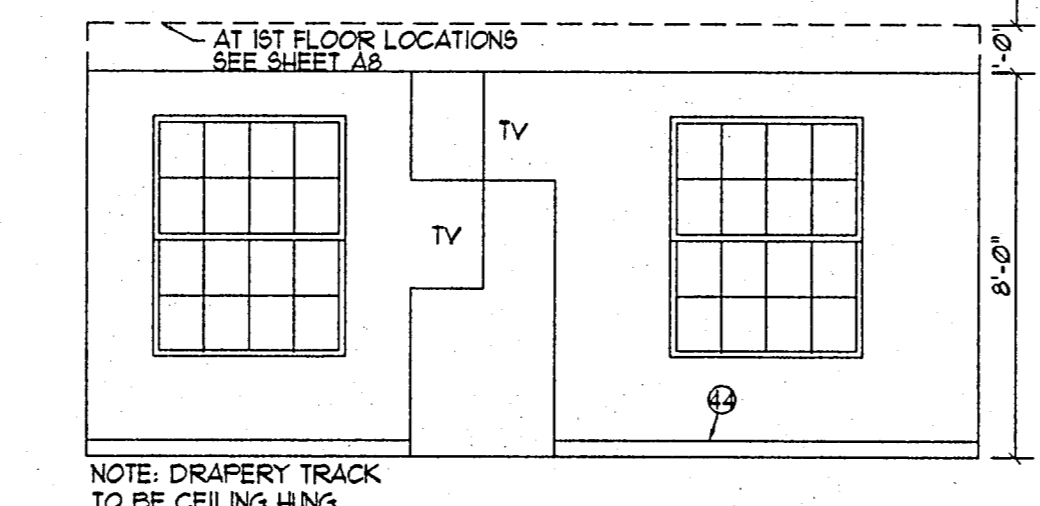
E TYPICAL SUITE ELEVATION  
SCALE: 1/4" = 1'-0"



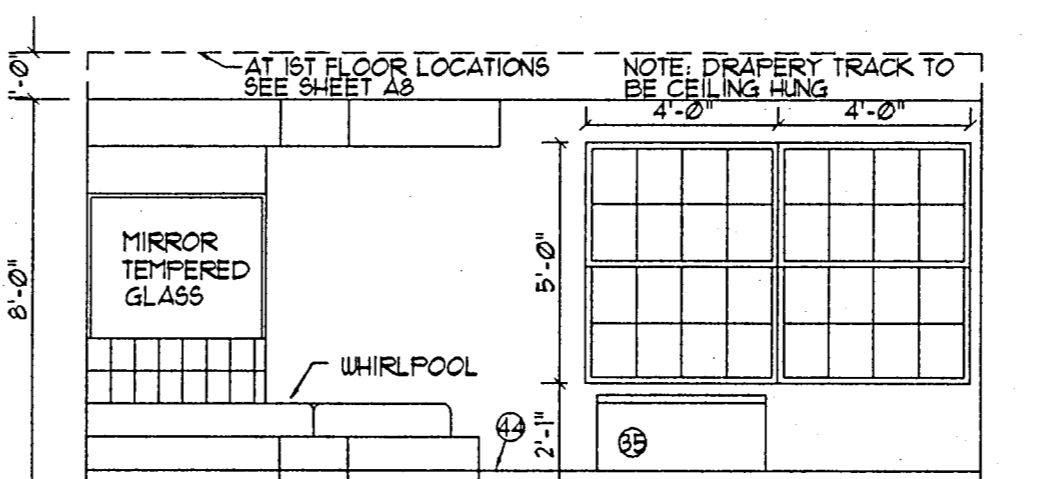
F TYPICAL SUITE ELEVATION  
SCALE: 1/4" = 1'-0"



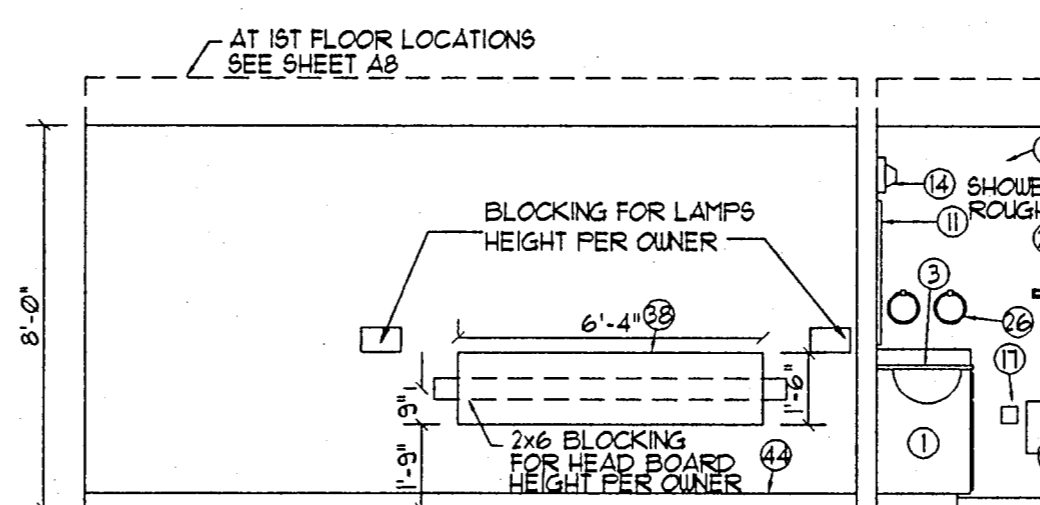
G TYPICAL SUITE ELEVATION  
SCALE: 1/4" = 1'-0"



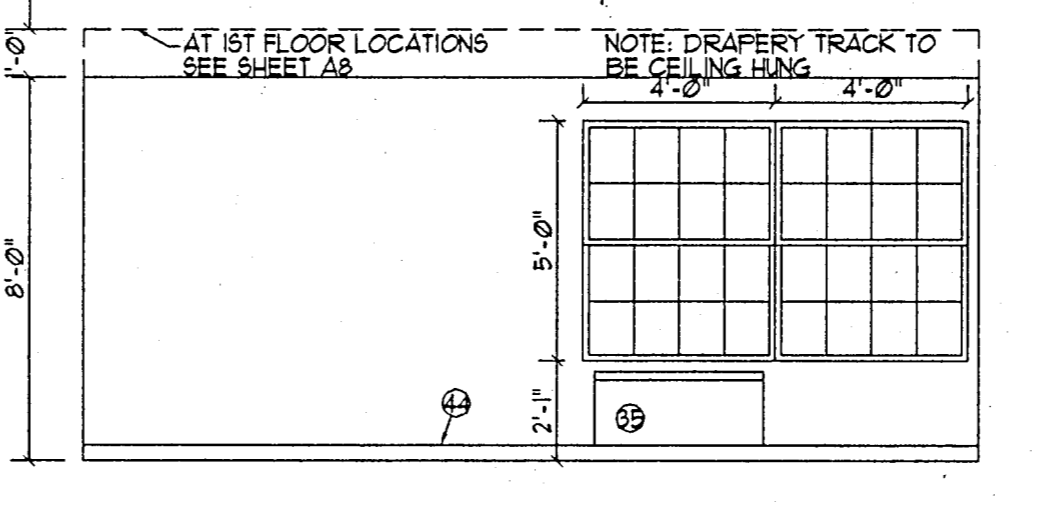
H TYPICAL SUITE ELEVATION  
SCALE: 1/4" = 1'-0"



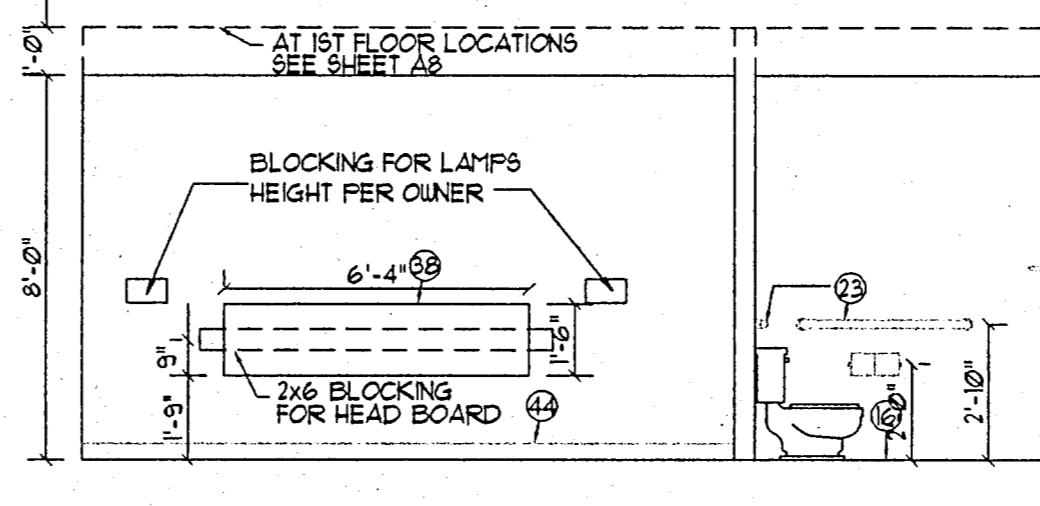
I TYPICAL SUITE ELEVATION  
SCALE: 1/4" = 1'-0"



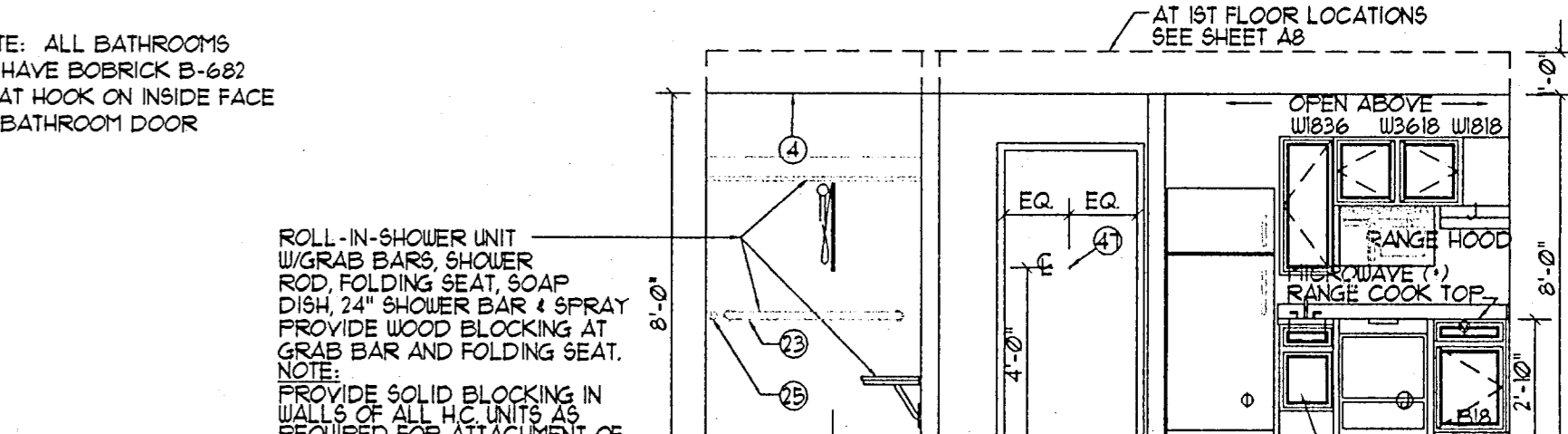
J TYPICAL SUITE ELEVATION  
SCALE: 1/4" = 1'-0"



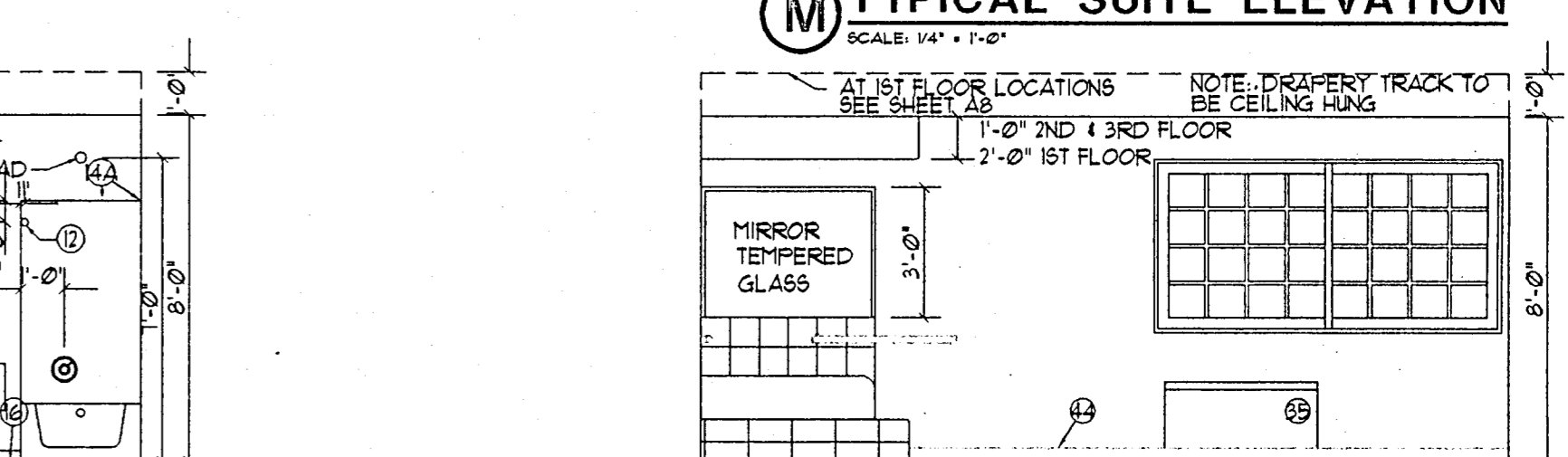
K TYPICAL SUITE ELEVATION  
SCALE: 1/4" = 1'-0"



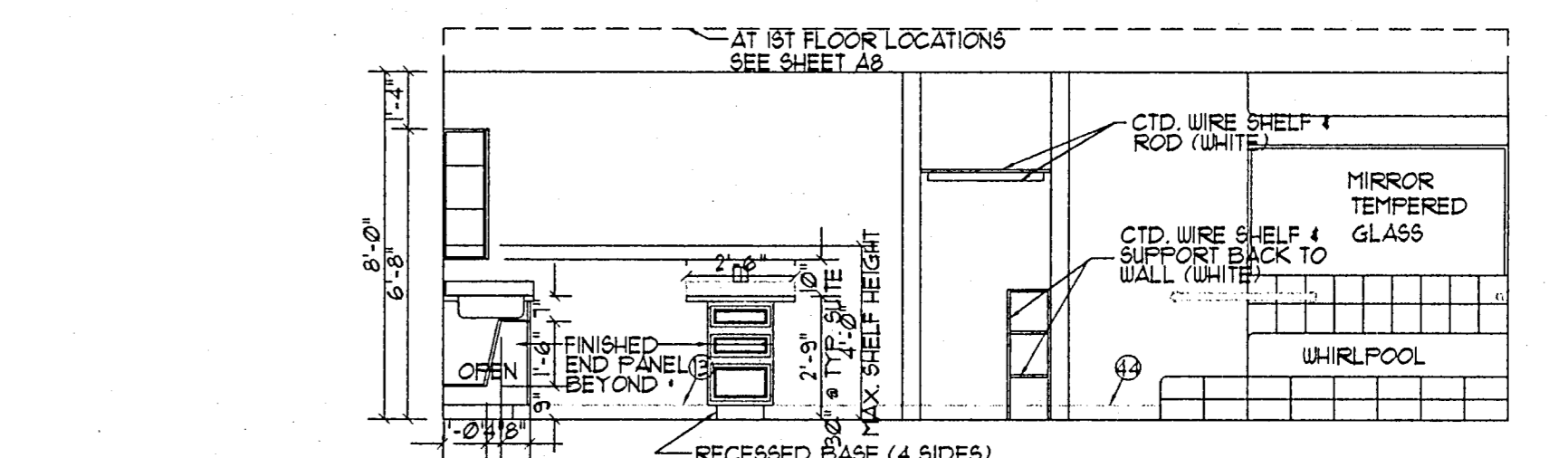
L TYPICAL SUITE ELEVATION  
SCALE: 1/4" = 1'-0"



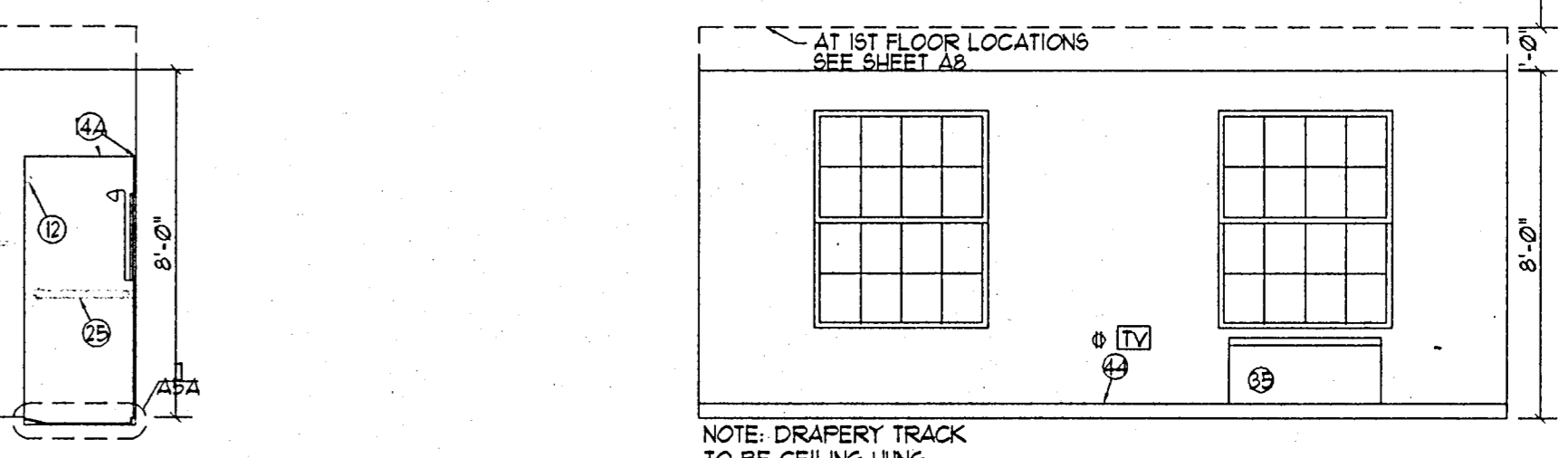
M TYPICAL SUITE ELEVATION  
SCALE: 1/4" = 1'-0"



N TYPICAL SUITE ELEVATION  
SCALE: 1/4" = 1'-0"



O TYPICAL SUITE ELEVATION  
SCALE: 1/4" = 1'-0"



P TYPICAL SUITE ELEVATION  
SCALE: 1/4" = 1'-0"

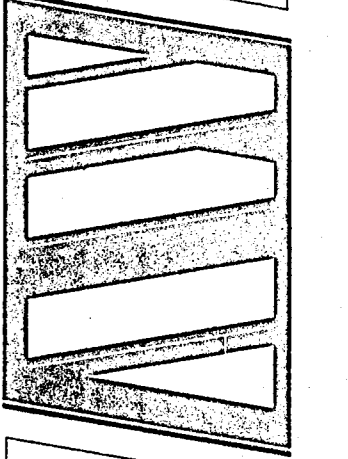
NOTE: ALL BATHROOMS TO HAVE BOBRICK B-682 COAT HOOK ON INSIDE FACE OF BATHROOM DOOR

ROLL-IN SHOWER UNIT W/GRAB BARS SHOWER ROD FOLDING SEAT SOAP DISH 24" SHOWER BAR 4 SPRAY PROVIDE WOOD BLOCKING AT GRAB BAR AND FOLDING SEAT. NOTE: PROVIDE SOLID BLOCKING IN WALLS OF ALL HIC UNITS AS REQUIRED FOR ATTACHMENT OF GRAB BARS.

MAINSTAY SUITES  
ADDISON, TEXAS



ART WILLIAMS JR  
ARCHITECT  
DALLAS, TEXAS 75240  
14180 DALLAS PARKWAY, SUITE 520



TYPICAL SUITE  
PLANS & ELEV.

JOB: 811  
DRAWN: FEC  
DATE: 10/2/98  
REVISIONS:

SHEET NO.  
A4.2  
OF: