

HVAC EQUIPMENT SCHEDULE

DESIGNATION	COOLING CAPACITY BTUH	HEATING CAPACITY KW	FAN DATA			MANUFACTURE MODEL NO. CONDENSING UNIT	MCA	MANUFACTURE MODEL NO. INDOOR UNIT	ACCESSORIES
			TOTAL CFM	HP	V/FH				
AC-1	60000	115	1930	3/4	208/1	TRANE TUF036C	25	TRANE TUE060C	
AC-2	60000	115	1930	3/4	208/1	TRANE TUF060C	31	TRANE TUE060C	
AC-3	60000	115	1710	1/2	208/1	TRANE TUF036C	25	TRANE TUE036P	
AC-4	60000	115	1710	3/4	208/1	TRANE TUF060C	31	TRANE TUE060C	
AC-5	36000	75	1080	1/2	208/1	TRANE TUF036C	25	TRANE TUE036P	
VERI-PAK-1	11200/11000	3.5	550	1/4	208/1			VERT-I-PAK VEA18K34	VPWP2, VPAL1, VFRG1, VFR11
PTAC-1	GUEST ROOM, THRU-THE-WALL MODEL: GE ZONELINE *A626E12AC 12,000 BTUH COOLING, 3.1 KW HEATER, 20A POWER SUPPLY, ARCHITECTURAL GRILLE RAG64 (ALL UNITS SHALL BE CONTROLLED FROM FRONT OFFICE.)								

KEYED NOTES:
① PROVIDE WEATHER PROOF ENCLOSURE FOR OUTDOOR INSTALLATION, OUTDOOR AIR INLET W/ LOCKING DAMPER, SPACE HEATING & COOLING THERMOSTAT W/ LOCKING COVER.

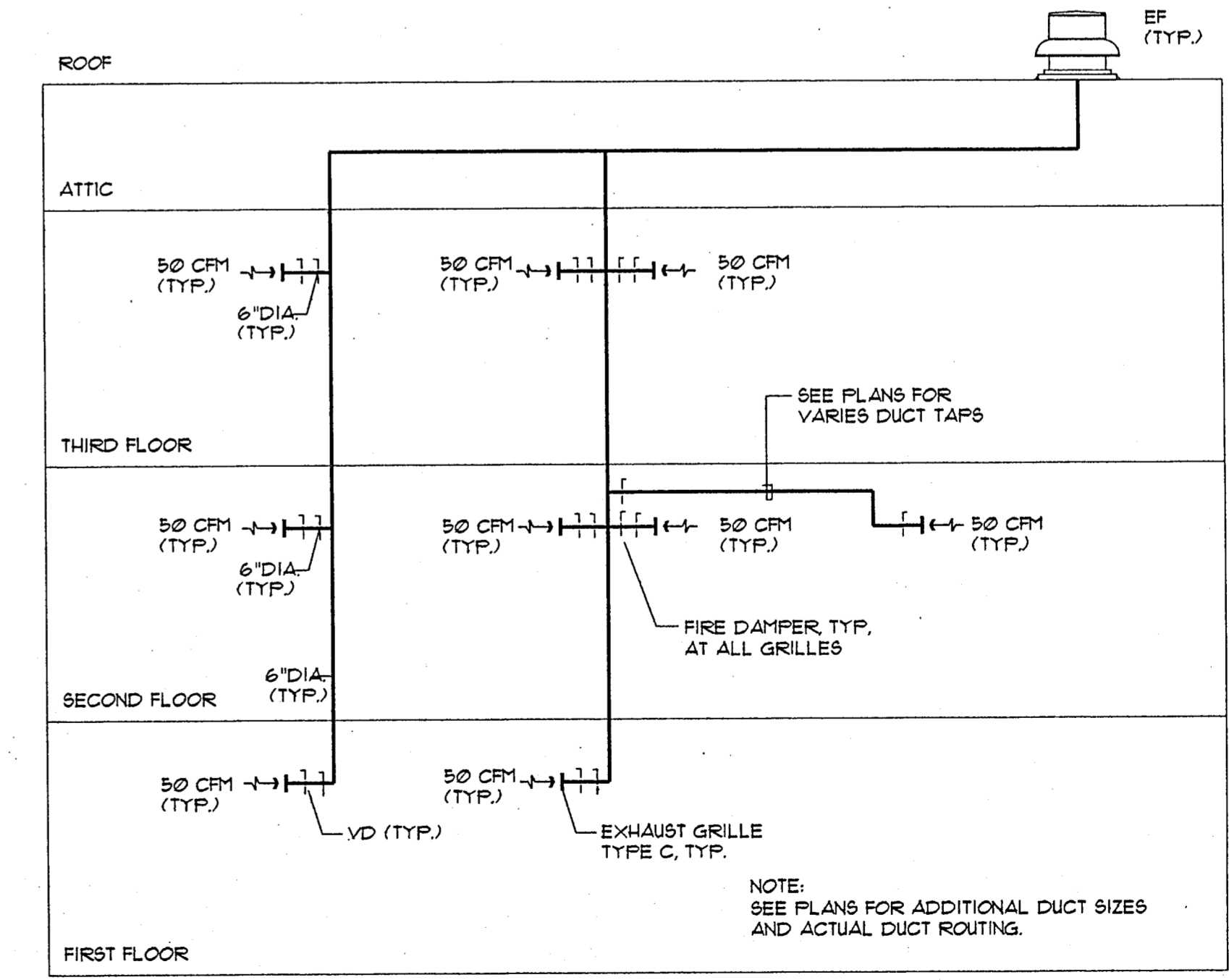
FAN SCHEDULE

DESIGNATION	LOCATION	SERVICE	CFM	TOTAL S.P.W.G.	MOTOR DATA			TYPE	DRIVE	MANUFACTURE # MODEL NO.	REMARKS	
					HP	V	FH / HZ					
EF-1	ROOF	BATHROOMS	750	3/8	1/6	120	1/60	1140	CENTRIFUGAL	DIRECT	GREENHECK G-130-B	
EF-4	ROOF	BATHROOMS	550	3/8	1/2	120	1/60	1300	CENTRIFUGAL	DIRECT	GREENHECK G-95-G	
EF-6	ROOF	BATHROOMS	450	3/8	1/25	120	1/60	1300	CENTRIFUGAL	DIRECT	GREENHECK G-90-G	
EF-5	ROOF	BATHROOMS	250	1/4	1/30	120	1/60	1300	CENTRIFUGAL	DIRECT	GREENHECK G-85-G	
EF-2	ROOF	BATHROOMS	850	3/8	1/8	120	1/60	860	CENTRIFUGAL	DIRECT	GREENHECK G-140-C	
EF-3	ROOF	BATHROOMS	1000	3/8	1/6	120	1/60	1140	CENTRIFUGAL	DIRECT	GREENHECK G-130-B	
EF-7	WALL	EXHAUST	180	1/4	1/30	120	1/60	--	THRU THE WALL	DIRECT	BROAN MODEL #511	

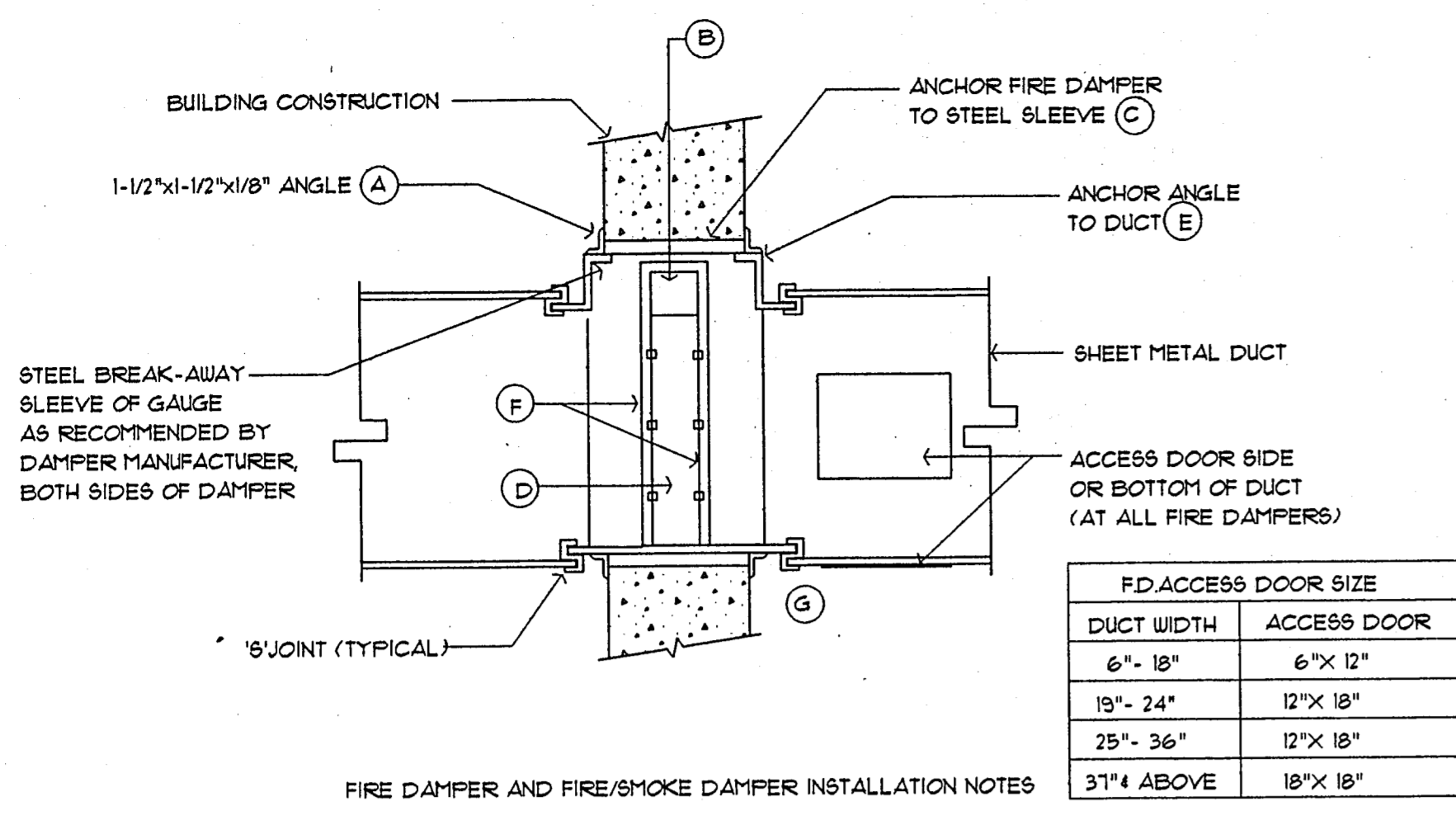
AIR DEVICE SCHEDULE

DESIGNATION	TYPE	MOUNT	FACE	MAX. S.P.	MAX. NC	MANUFACTURE # MODEL NO.	REMARKS
A	SUPPLY	GWB OR SIDEWALL	LOUVERED	J	30	TITUS 212 RS-FR	DBL. DEFLECT, 3/4" SPACING ①
B	SUPPLY	GWB OR LAY-IN	LOUVERED 24x24	J	30	TITUS TMSA-FR	NECK SIZE SEE PLANS ①
C	EXHAUST	GWB OR SIDEWALL	LOUVERED	J	30	TITUS 355RL-FR	35" DEFLECTION, 1/2" SPACING ①
D	RETURN	GWB OR LAY-IN	LOUVERED 18x24	J	30	TITUS 56F-FR	0" DEFLECTION, 3/4" SPACING ①
E	RETURN	GWB OR LAY-IN	LOUVERED 24x24	J	30	TITUS 50F-FR	0" DEFLECTION, 3/4" SPACING ①

① PROVIDE FIRE RATED GRILLE, TYP. ALL GRILLES



⑤ TYPICAL EXHAUST DUCT RISER
SCALE: NO SCALE

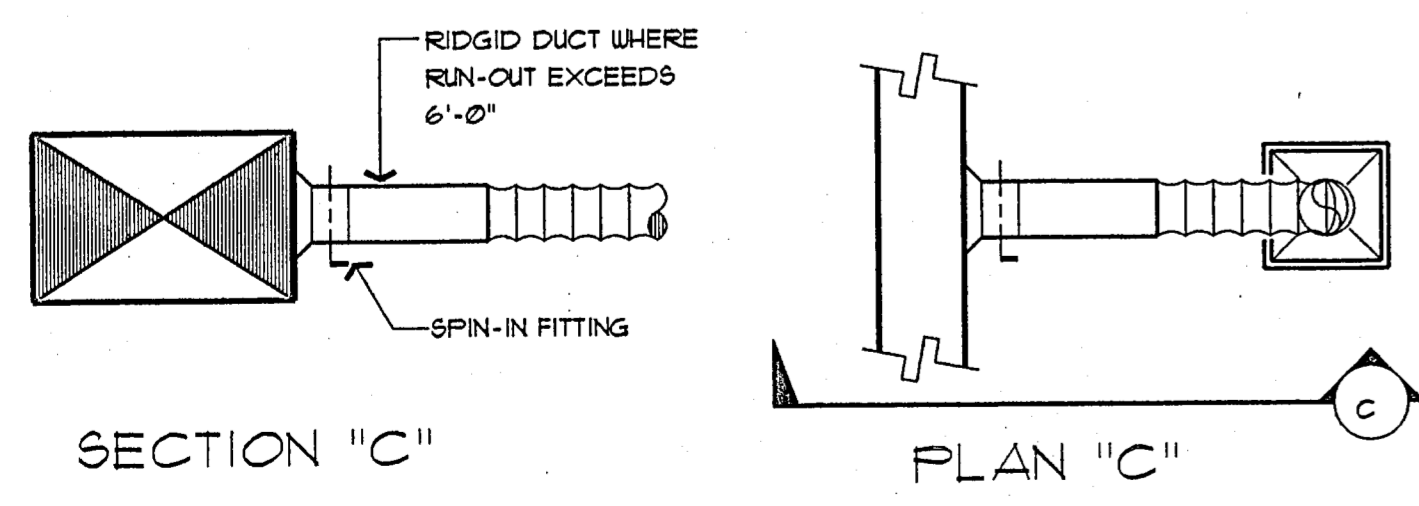
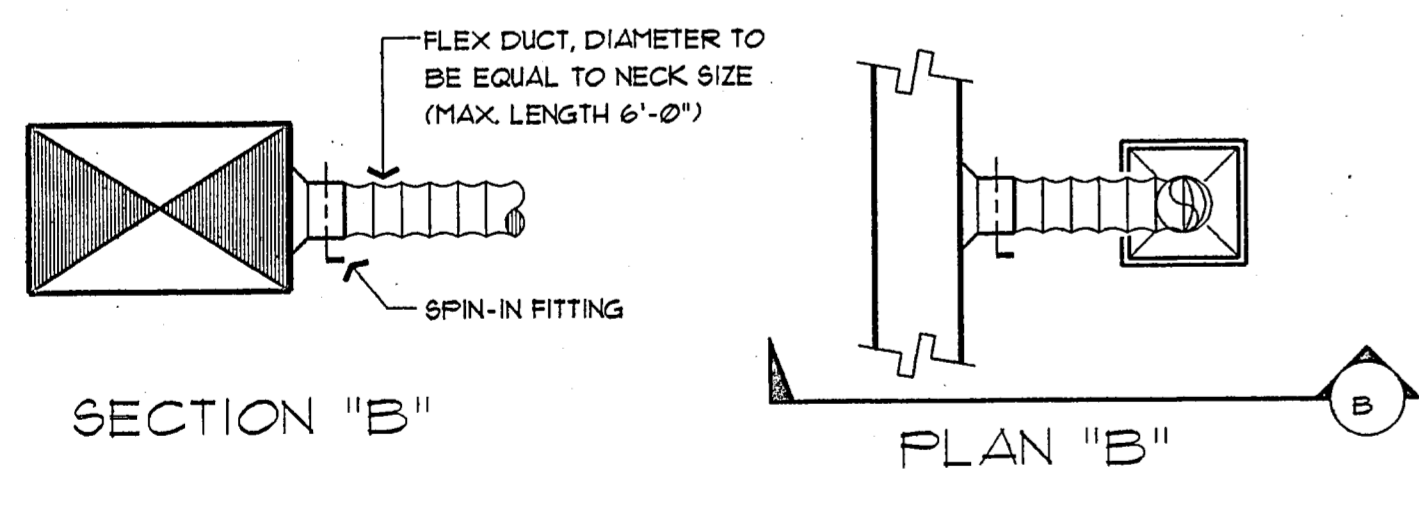
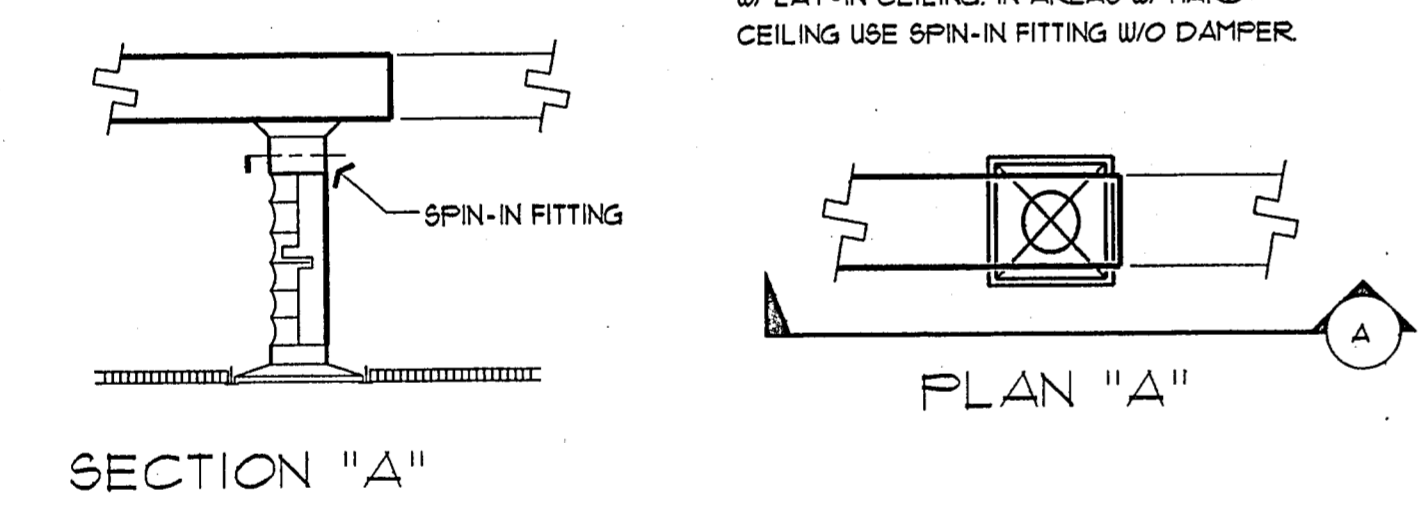


FD ACCESS DOOR SIZE

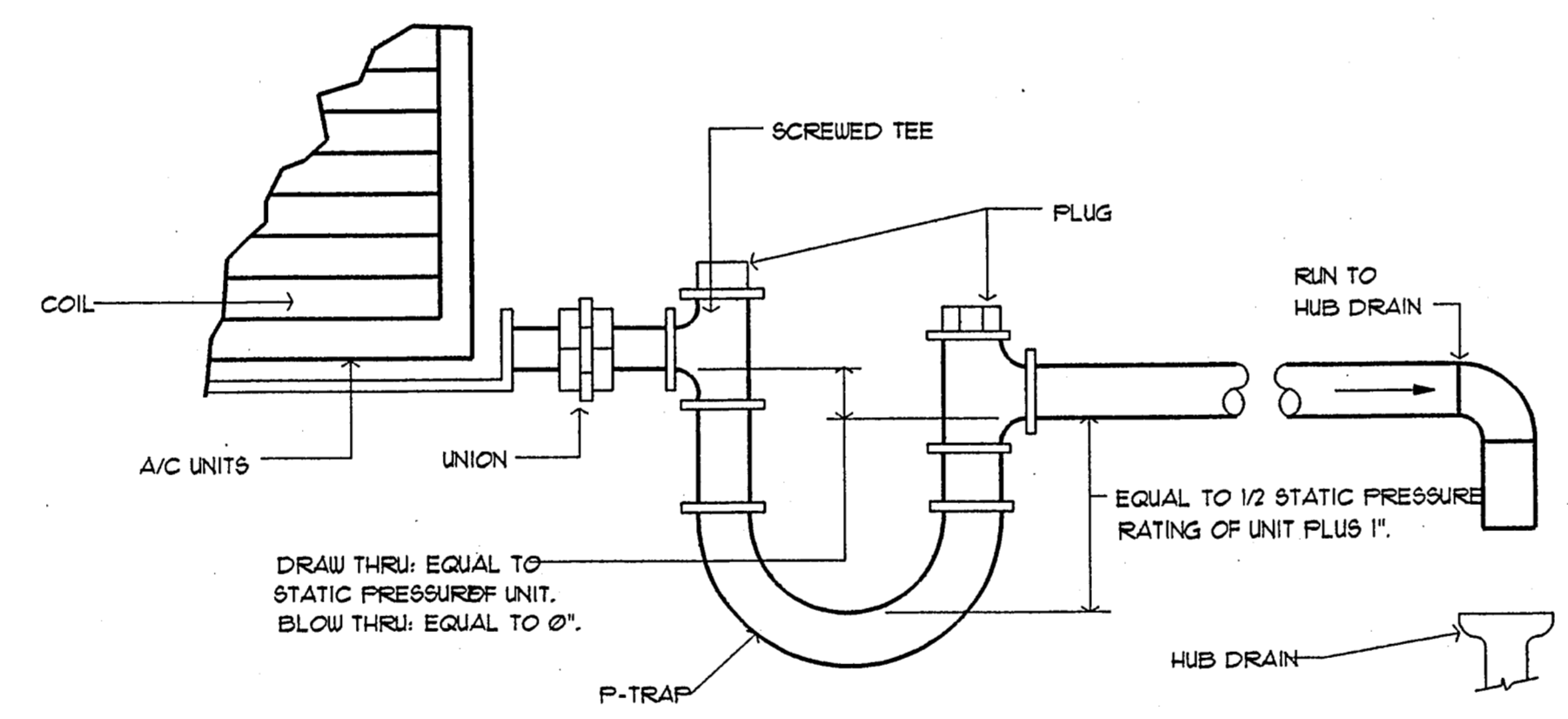
DUCT WIDTH	ACCESS DOOR
6" - 18"	6" X 12"
19" - 24"	12" X 18"
25" - 36"	12" X 18"
37" - 48"	18" X 18"

- FIRE DAMPER AND FIRE/SMOKE DAMPER INSTALLATION NOTES**
- RETAINING ANGLES: MIN. 1-1/2" X 1-1/2" X 1/8"
 - CLEARANCE: 1/2" LARGER THAN DAMPER, BOTH DIMENSIONS. SLEEVE & VOID TO BE FIRESTOPPED WITH SAFING OR FIRE RATED FOAM.
 - STEEL SLEEVE: PER SCHEDULE 2, SMACNA FIRE DAMPER AND HEAT STOP GUIDE.
 - APPROVED FIRE DAMPER (CURTAIN OR BLADE TYPE).
 - SECURE RETAINING ANGLES TO DUCT ONLY ON 8" CENTERS WITH:
 - 1/2" LONG WELDS OR
 - 1/4" BOLTS AND NUTS, OR
 - NO. 10 STEEL SCREWS, OR
 - MIN. 3/16" STEEL RIVETS
 - SECURE DAMPERS TO SLEEVE ON 8" CENTERS WITH:
 - 1/2" LONG WELDS, OR
 - 1/4" BOLTS AND NUTS IN HOLES PROVIDED, OR
 - MIN. 3/16" STEEL RIVETS
 - SECURE DUCT TO SLEEVE WITH A CONNECTION PER FIGURE 2, SMACNA GUIDE. FIRE DAMPERS SHALL BE INSTALLED WITHIN WALL OR FLOOR OR IF INSTALLED IN A 10 GAUGE STEEL SLEEVE, WITHIN 12 INCHES OF WALL. ACCESS DOORS SHALL BE PROVIDED OUTSIDE OF THE SLEEVE. IN EXISTING FACILITIES WHERE THE ACCESS DOOR IS BETWEEN THE PLANE OF THE WALL OR FLOOR AND THE DAMPER, THE ACCESS DOOR SHALL BE CONSIDERED AS A SMOKE DOOR AND SHALL BE MADE SELF-CLOSING. SMOKE DAMPERS SHALL MEET THE REQUIREMENTS OF UL 555S. WHEN AIR HANDLING EQUIPMENT IS NOT OPERATING, THE SMOKE DAMPERS IN THE DUCTWORK ASSOCIATED WITH THAT EQUIPMENT SHALL CLOSE.
 - WALL OPENING TO BE FRAMED WITH METAL STUDS IN GYPSUM WALLS.
 - INSULATION SHALL NOT PENETRATE WALL.
 - PROVIDE ACCESS DOORS IN WALL, CEILING, AND DUCT TO ALLOW INSPECTION AND MAINTENANCE OF DAMPERS AND SMOKE DETECTORS.
 - PROVIDE FIRE SEAL BETWEEN DAMPER AND SLEEVE.
 - PROVIDE CAULKING OF RETAINING ANGLES OF THE WALLS ON FIRE/SMOKE DAMPER INSTALLATION ON DETAIL FOR SMOKE-PROOF INSTALLATION.

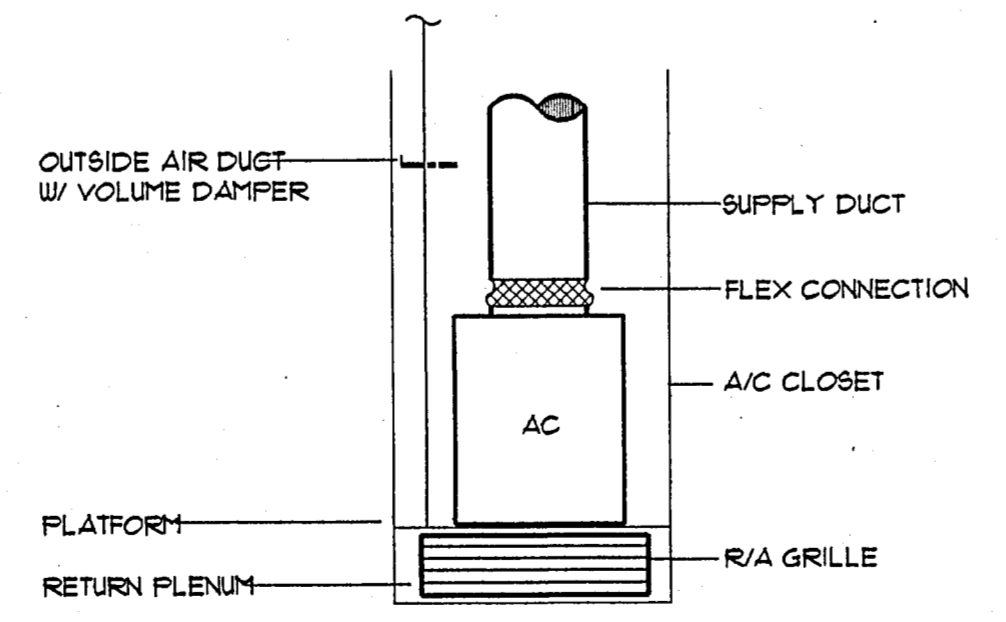
① FIRE DAMPER DETAIL
SCALE: NOT TO SCALE



② DIFFUSER CONNECTION DETAIL
SCALE: NO SCALE



③ CONDENSATE DRAIN DETAIL
SCALE: NOT TO SCALE



④ SECTION - TYPICAL AC
SCALE: NO SCALE