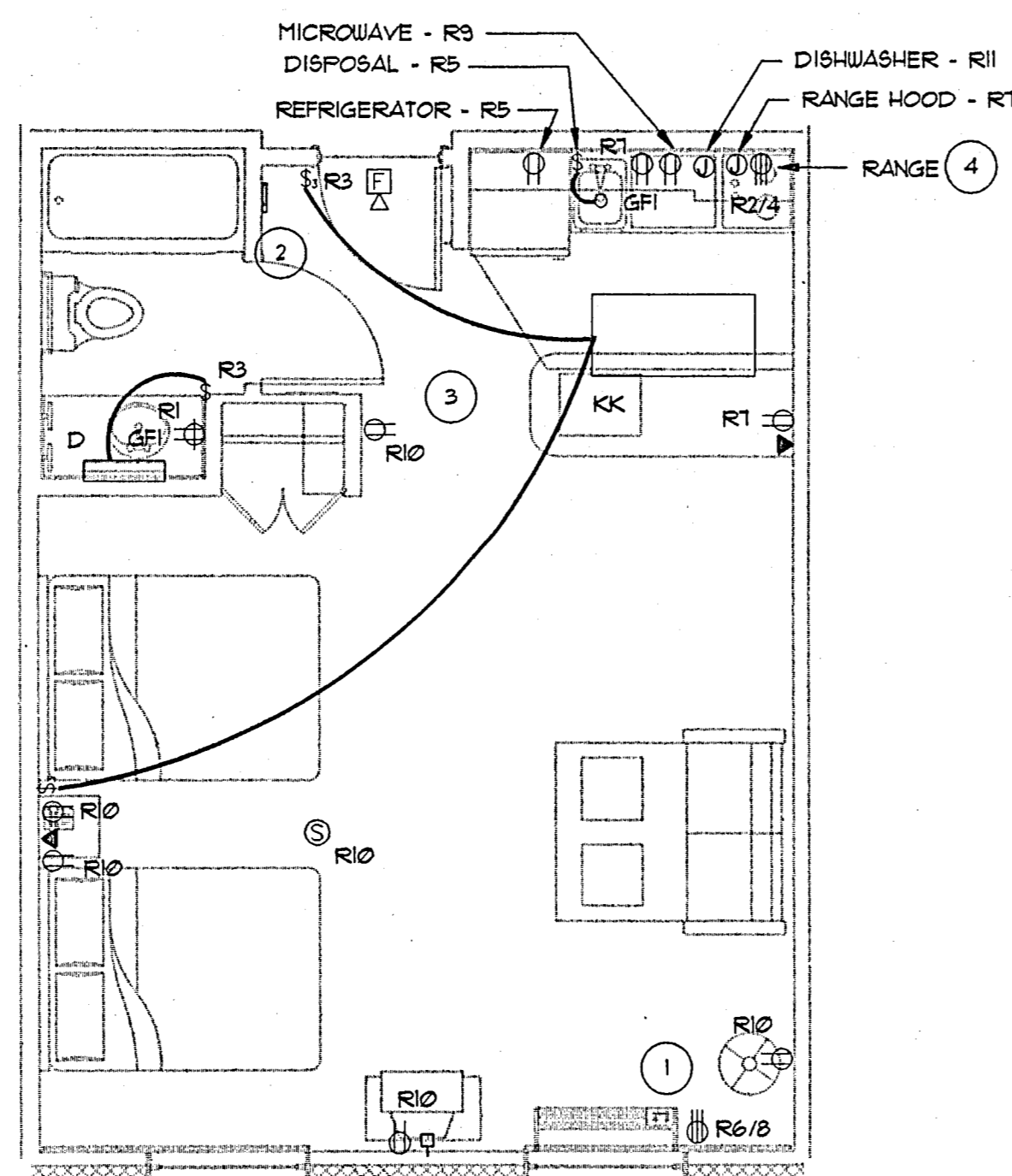
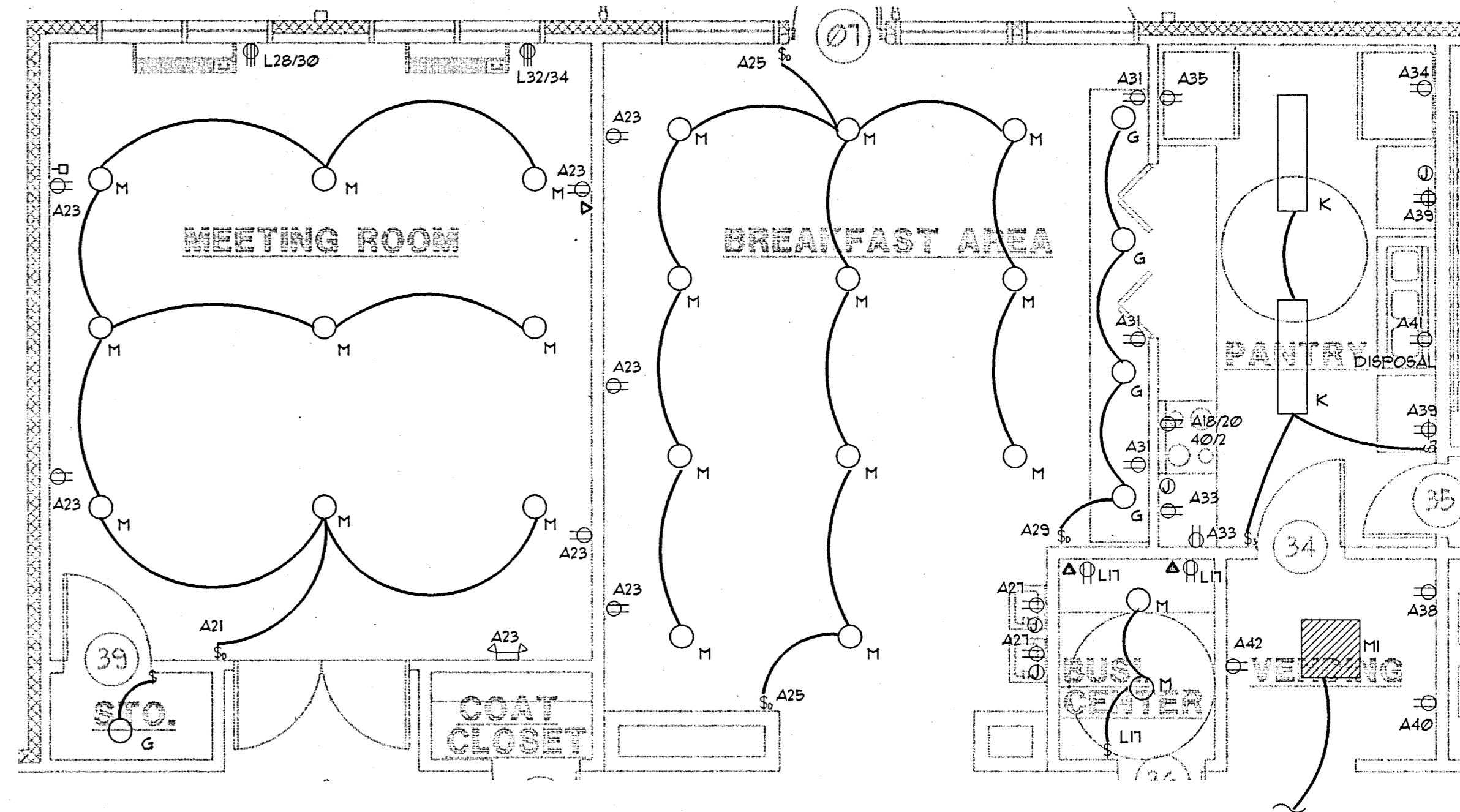


1 HANDICAP SUITE - H-K-J  
SCALE: 1/4" = 1'-0"



2 TYPICAL SUITE G-QQ  
SCALE: 1/4" = 1'-0"



3 ENLARGED PLAN MEETING/BREAKFAST - ELECTRICAL  
SCALE: 1/4" = 1'-0"

**NOTES BY SYMBOLS**

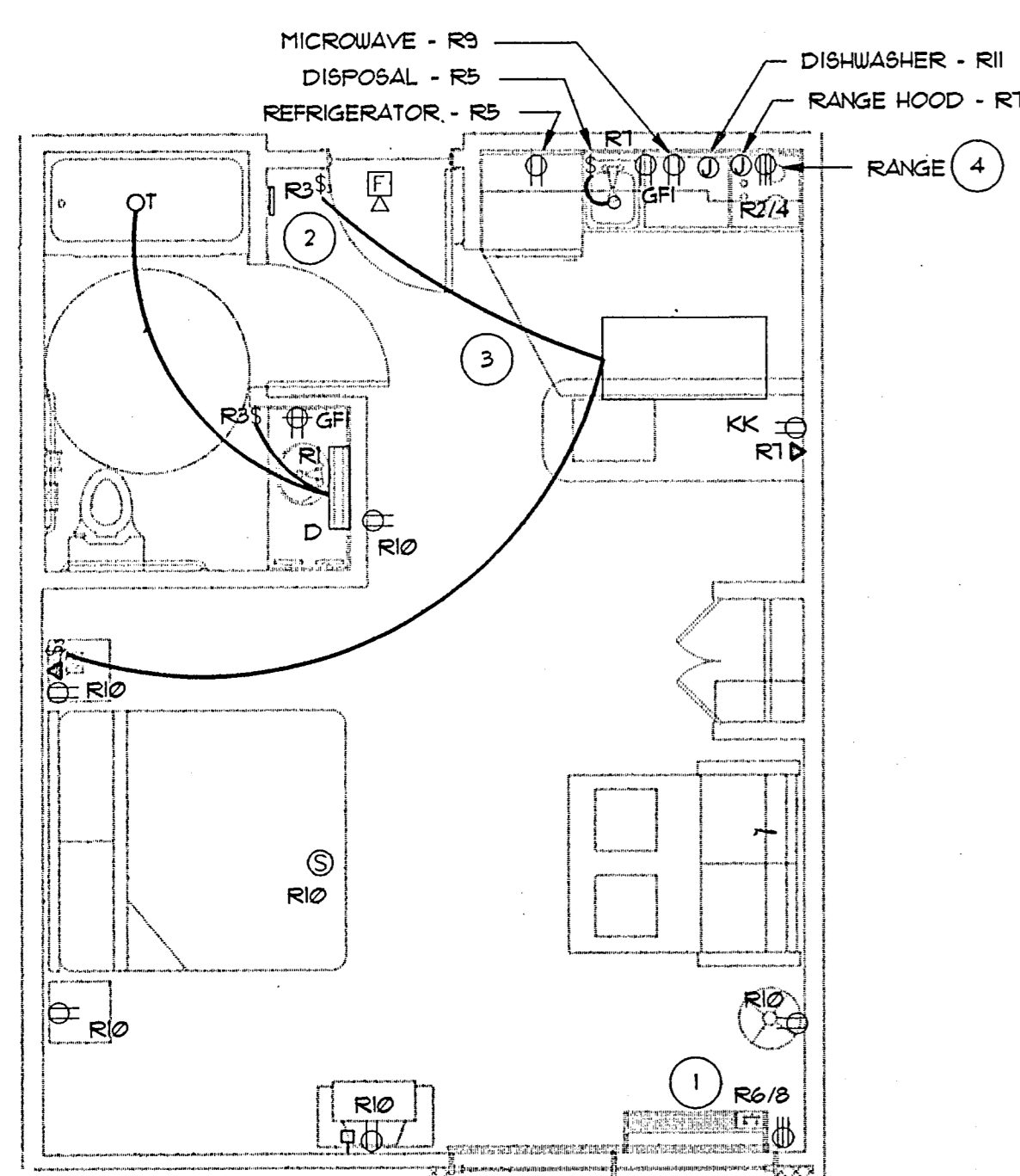
- 1 20 AMP 208 VOLT CIRCUIT WITH NEMA 6-20R FOR AIR CONDITIONER
- 2 ELECTRICAL PANEL -R
- 3 SEE ARCHITECTURAL DRAWINGS FOR MOUNTING HEIGHTS OF ELECTRICAL DEVICES
- 4 20 AMP 120V CIRCUIT FOR RANGE
- 5 GFI RECEPTACLE ON DEDICATED 20 AMP CIRCUIT FOR WHIRLPOOL. CONNECT WHIRLPOOL EQUIPMENT AND CONTROLS AS REQUIRED.
- 6 CONTRACTOR SHALL INSTALL OUTLETS IN ONE OF EACH TYPE UNIT AND OBTAIN OWNERS WRITTEN APPROVAL. FAILURE TO COMPLY WITH THIS NOTE WILL OBLIGATE CONTRACTOR TO RELOCATE OUTLETS TO OWNER'S SATISFACTION.

Note: Contractor shall furnish and install the following in each guestroom.

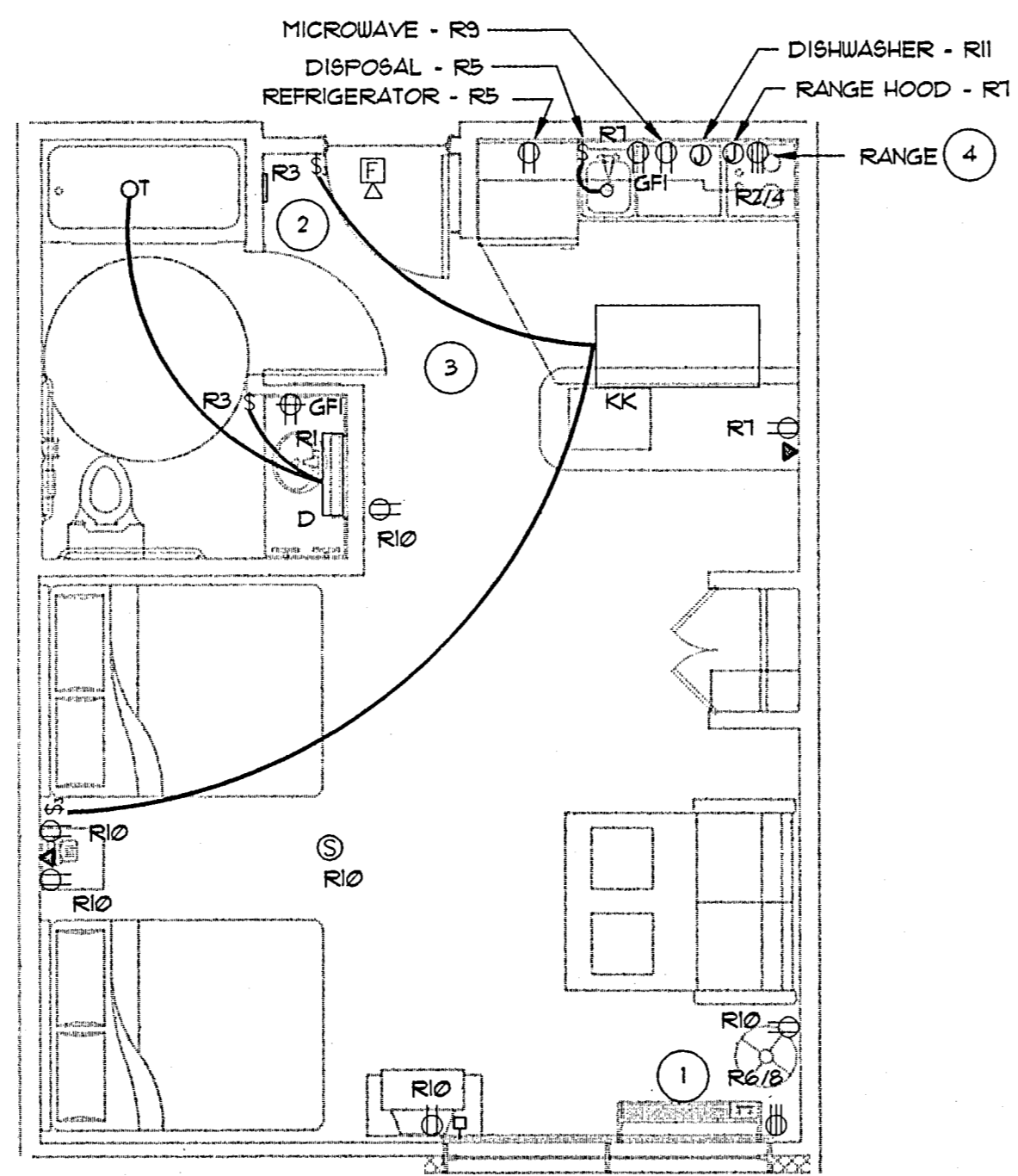
- A. TWO BURNER COOKTOP GE# JP200V
- B. GARBAGE DISPOSAL GE# GFC700Y - 1/2 HP
- C. DISHWASHER GE# GSD3230ZWW
- D. VENT/HOOD GE# JV347X
- E. SPACEMAKER MICROWAVE GE# JVM1440WA (GE# JE1040WY ADA RMS.)
- F. REFRIGERATORS WICE MAKER GE# TBX18SIB

**NOTES BY SYMBOL**

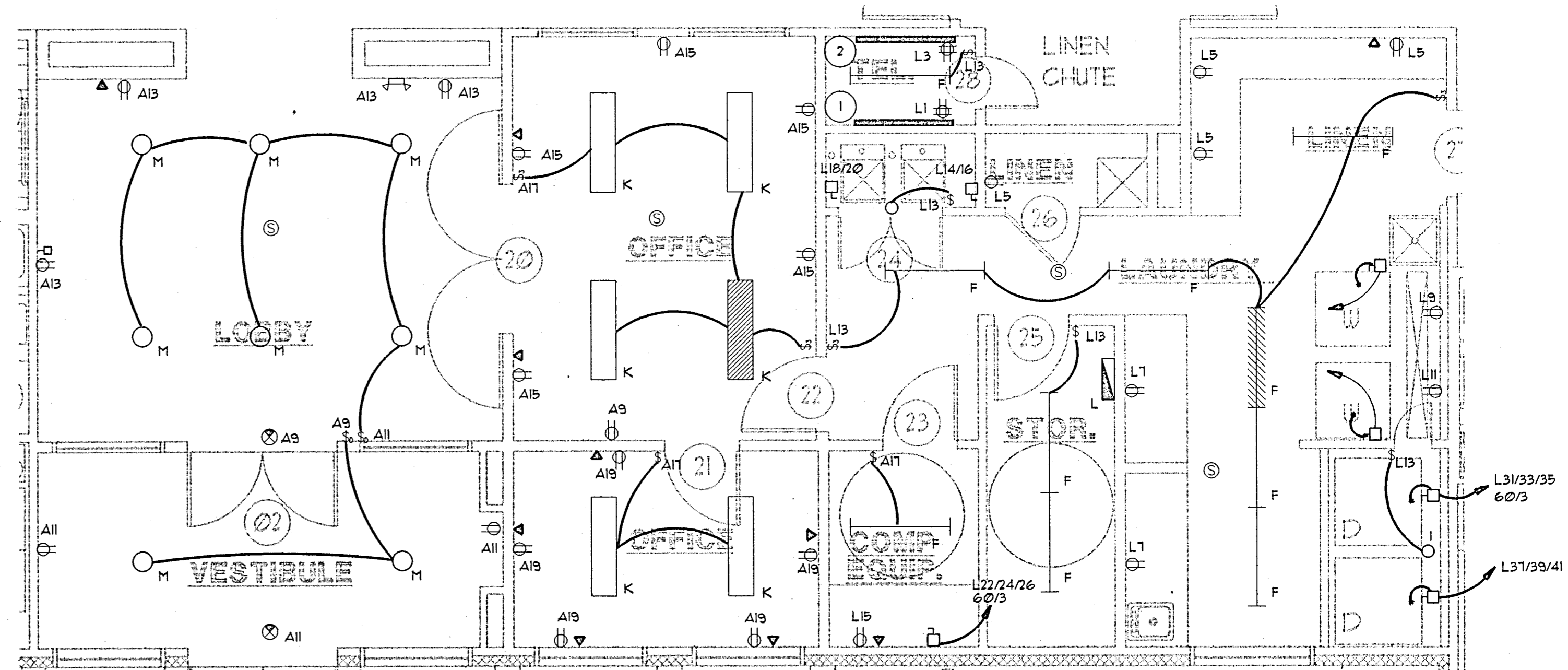
- 1 TELEPHONE BOARD 2'-3" TO PROPERTY LINE
- 2 CABLE BOARD 2'-3" TO PROPERTY LINE
- 3 OUTLET FOR RECIRCULATION PUMP



3 HANDICAP SUITE - H-QQ  
SCALE: 1/4" = 1'-0"



4 HANDICAP SUITE - H-K-J  
SCALE: 1/4" = 1'-0"

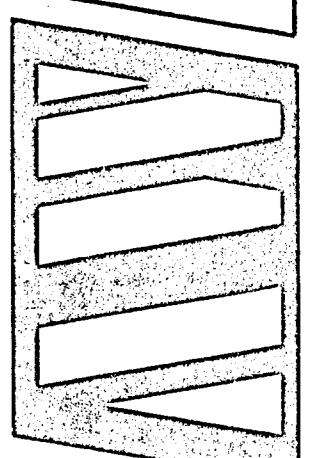


6 ENLARGED PLAN LOBBY/LAUNDRY - ELECTRICAL  
SCALE: 1/4" = 1'-0"

MAINSTAY SUITES  
ADDISON, TEXAS

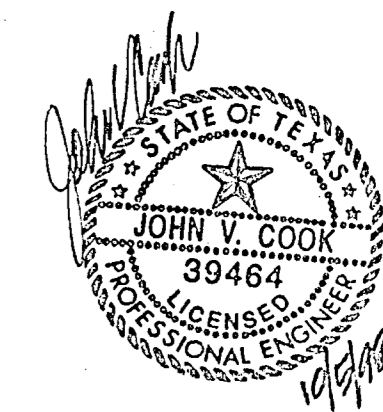


ART WILLIAMS JR  
ARCHITECT  
14180 DALLAS PARKWAY, SUITE 520  
DALLAS, TEXAS 75240



ENLARGED UNIT  
PLANS - ELECTRICAL

JOB: 811  
DRAWN: FEC  
DATE: 8/12/98  
REVISIONS:



SHEET NO.  
E3.1  
OF: