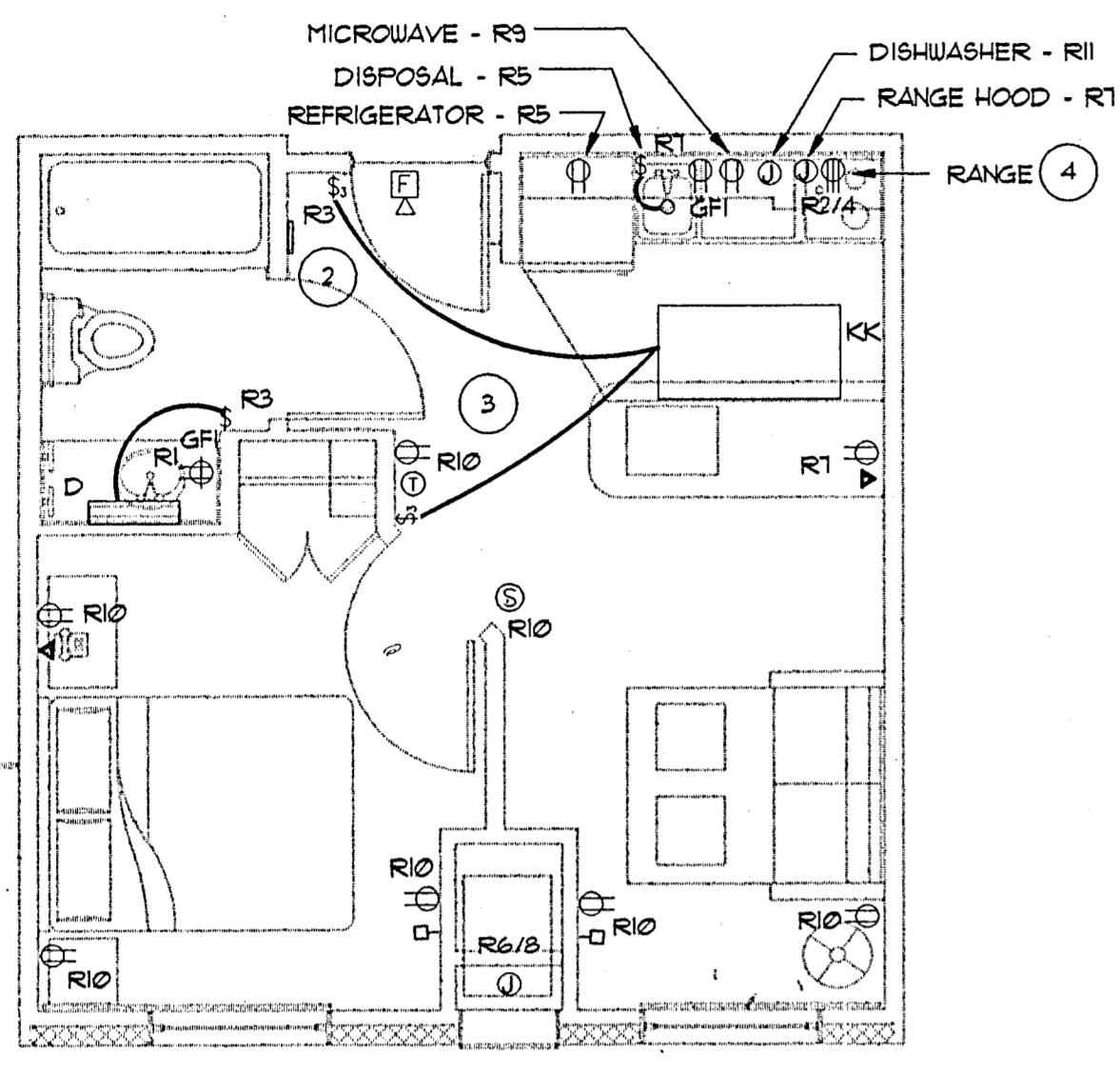
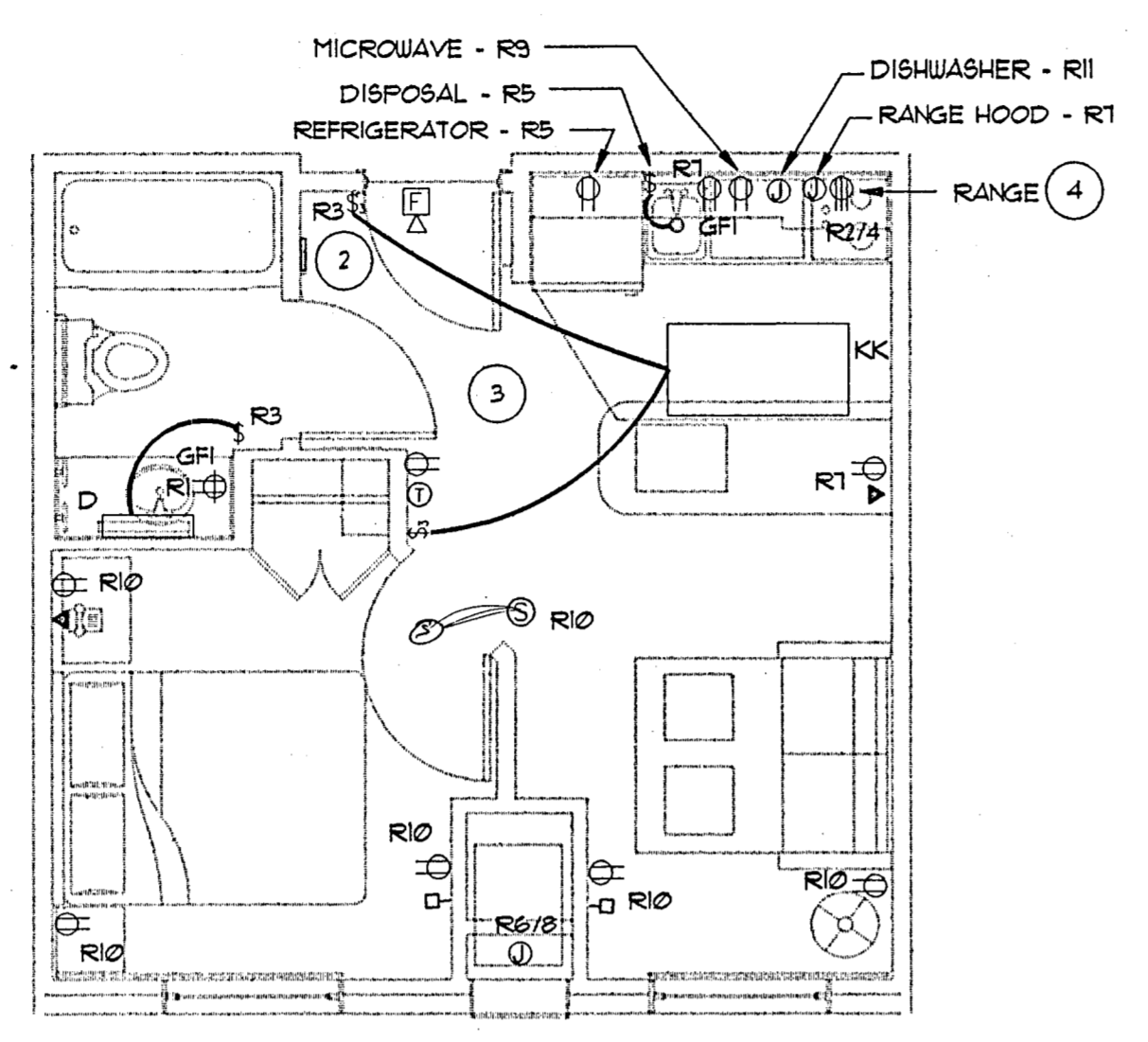


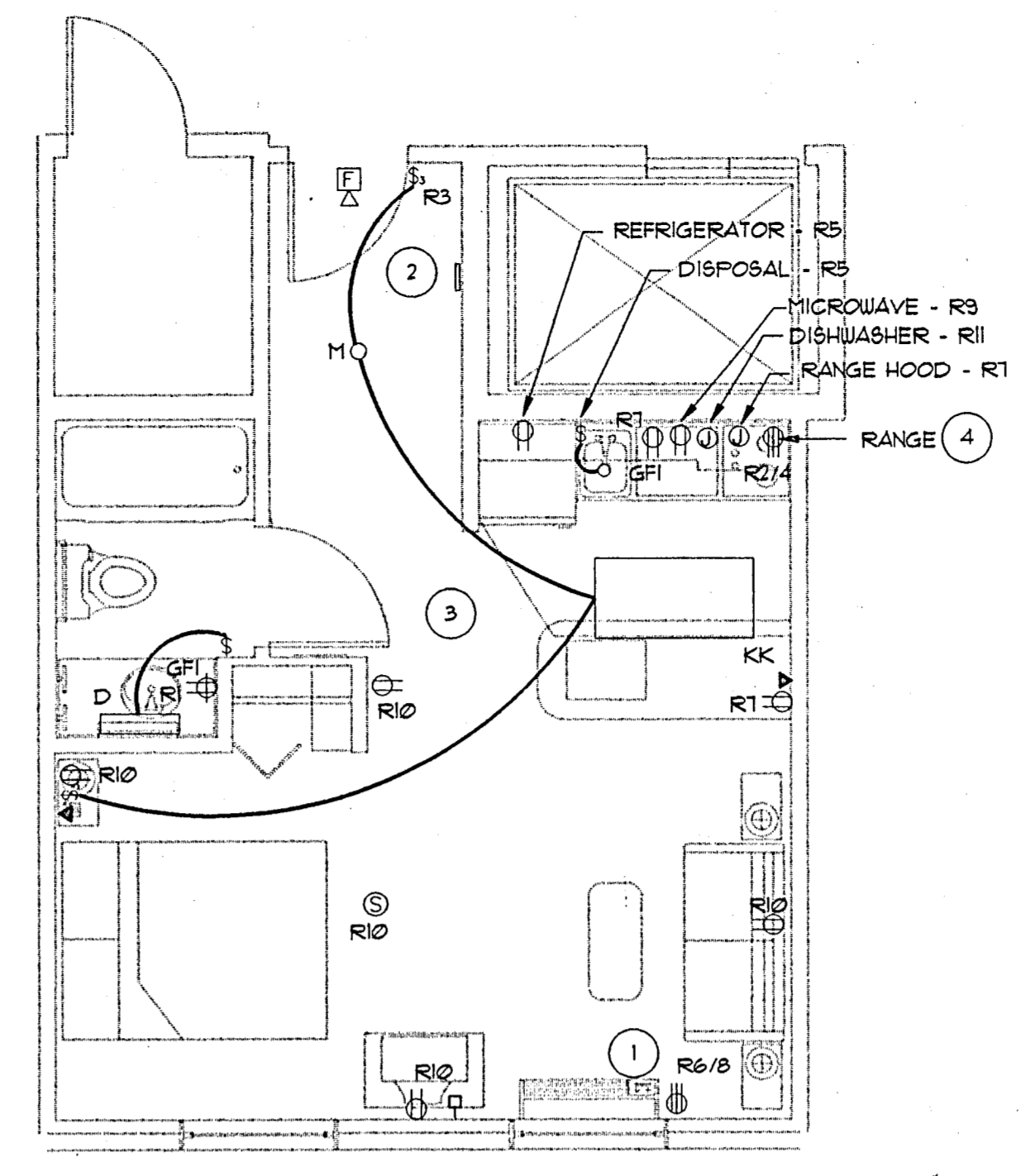
JOB: 811
DRAWN: FEC
DATE: 8/12/98
REVISIONS:



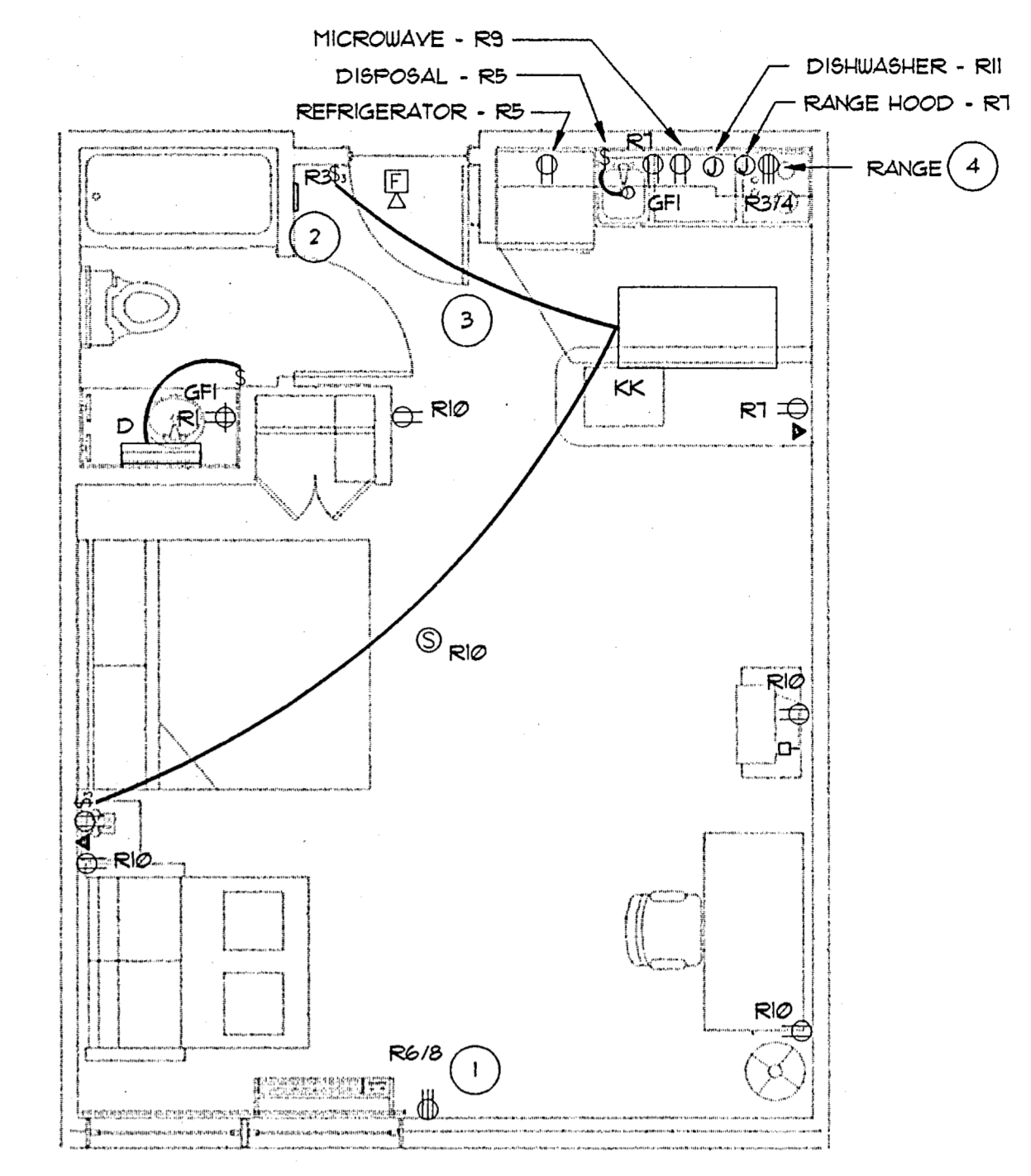
1 TYPICAL SUITE A-Q
SCALE: 1/4" = 1'-0"
BLOCK A



2 TYPICAL SUITE B-Q
SCALE: 1/4" = 1'-0"



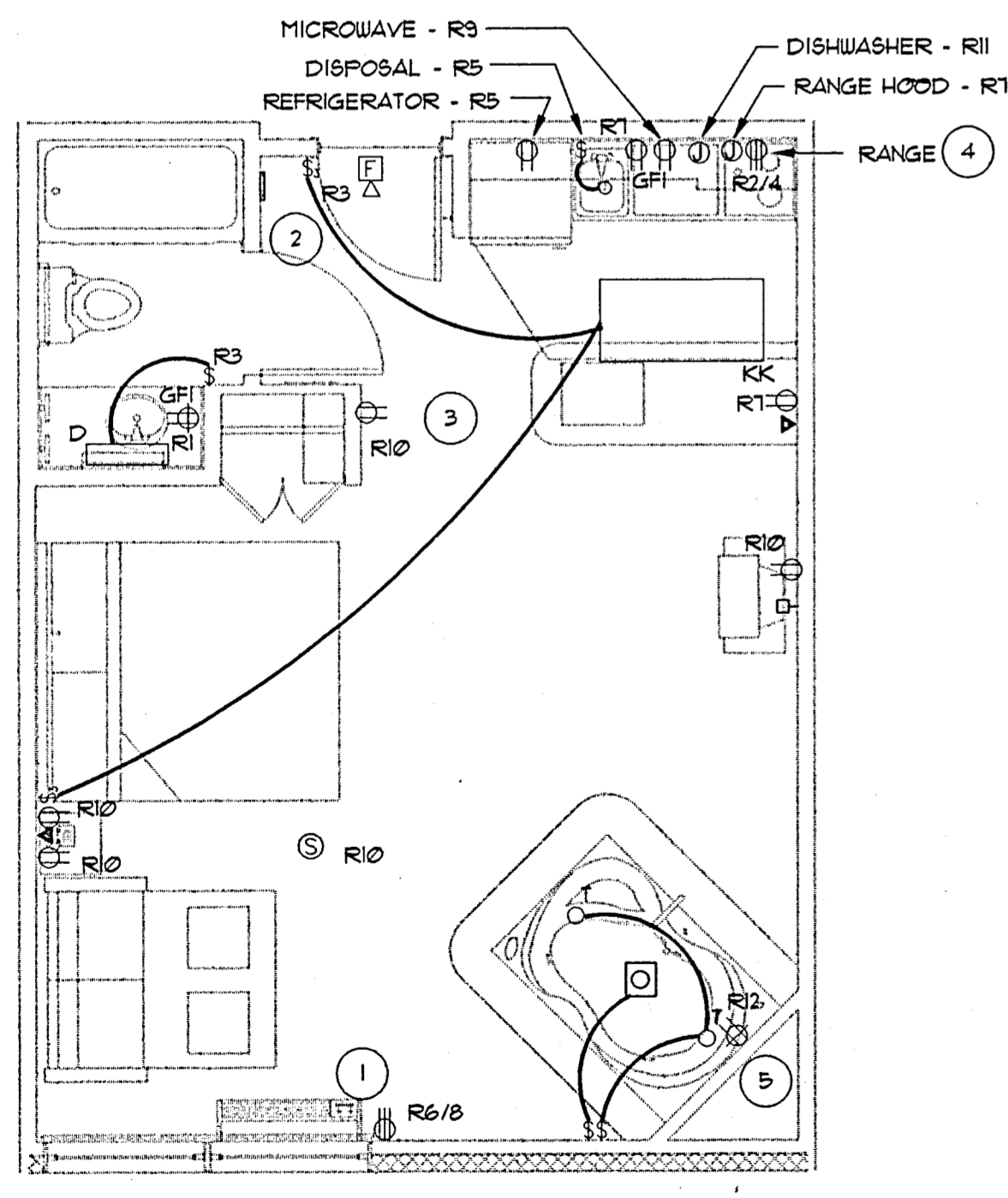
3 TYPICAL SUITE C-Q
SCALE: 1/4" = 1'-0"



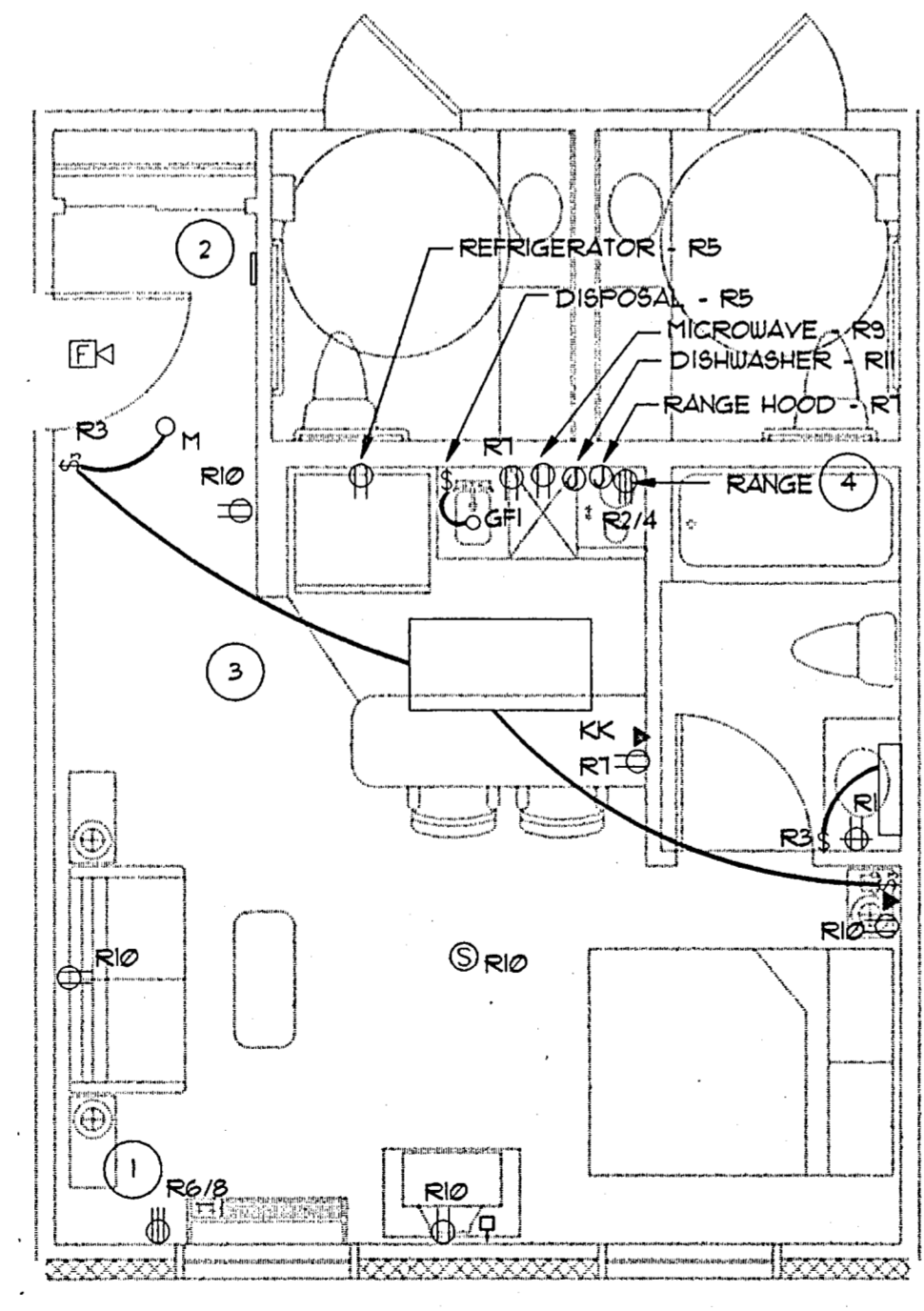
4 TYPICAL SUITE D-Q
SCALE: 1/4" = 1'-0"

NOTES BY SYMBOLS

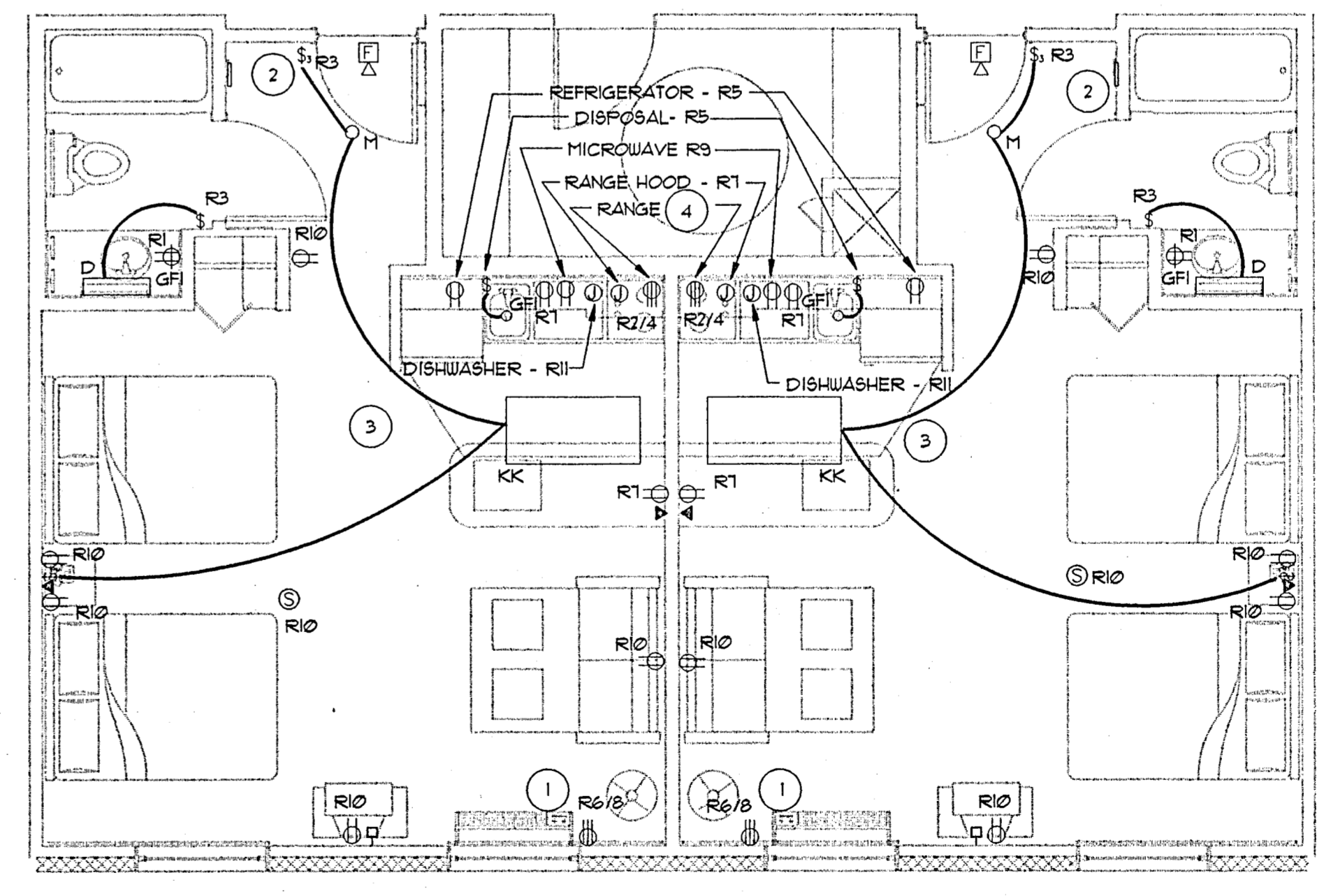
- 1 20 AMP 120 VOLT CIRCUIT WITH NEMA 6-20R FOR AIR CONDITIONER
- 2 ELECTRICAL PANEL 'R
- 3 SEE ARCHITECTURAL DRAWINGS FOR MOUNTING HEIGHTS OF ELECTRICAL DEVICES.
- 4 20 AMP 120V CIRCUIT FOR RANGE
- 5 GFI RECEPTACLE ON DEDICATED 20 AMP CIRCUIT FOR WHIRLPOOL. CONNECT WHIRLPOOL EQUIPMENT AND CONTROLS AS REQUIRED.
- 6 CONTRACTOR SHALL INSTALL OUTLETS IN ONE OF EACH TYPE UNIT AND OBTAIN OWNER'S WRITTEN APPROVAL. FAILURE TO COMPLY WITH THIS NOTE WILL OBLIGATE CONTRACTOR TO RELOCATE OUTLETS TO OWNER'S SATISFACTION.



5 TYPICAL SUITE D-Q-J
SCALE: 1/4" = 1'-0"



6 TYPICAL SUITE E-Q
SCALE: 1/4" = 1'-0"



7 TYPICAL SUITE F-QQ
SCALE: 1/4" = 1'-0"

7 TYPICAL SUITE F-QQ
SCALE: 1/4" = 1'-0"

