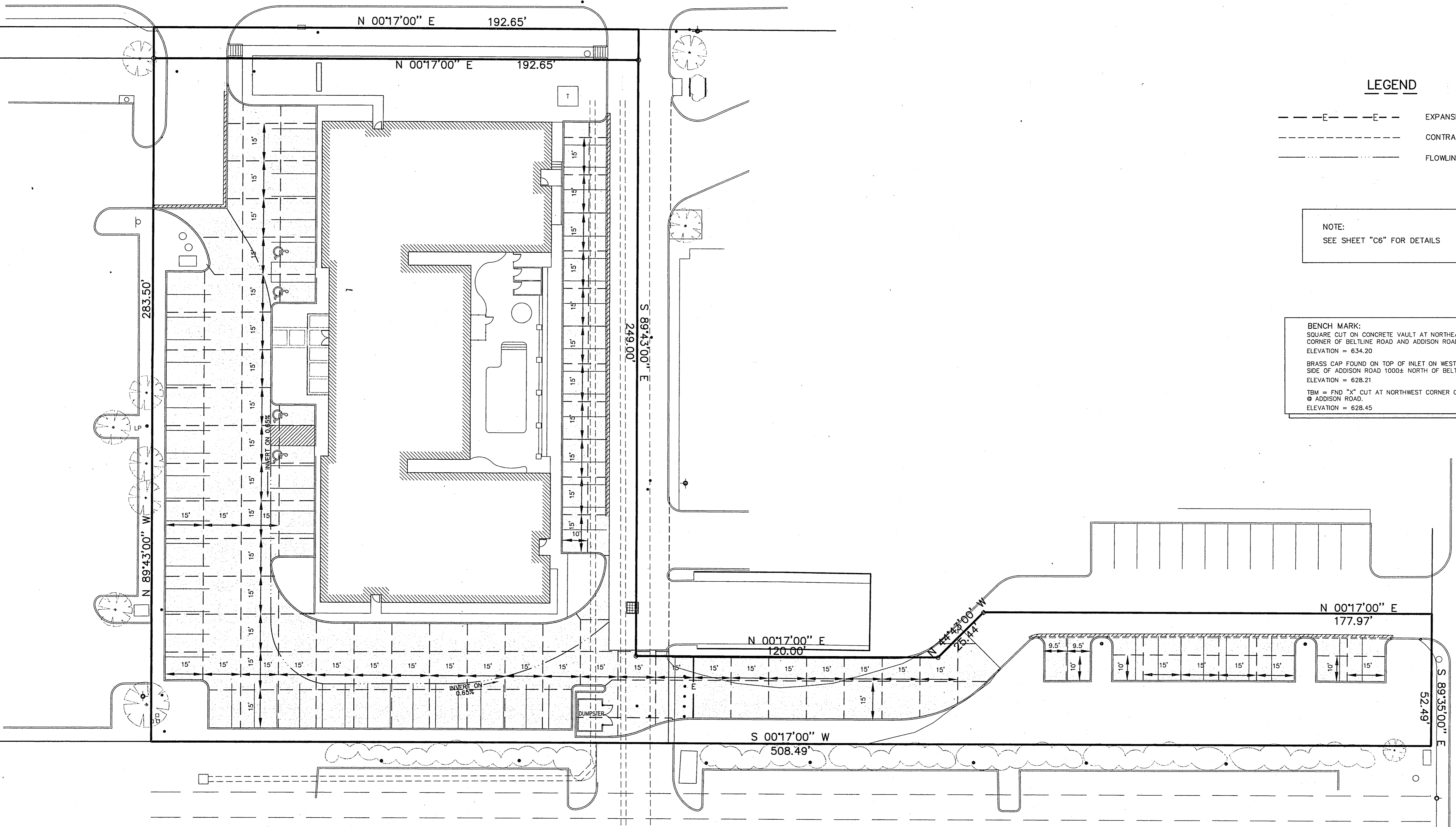
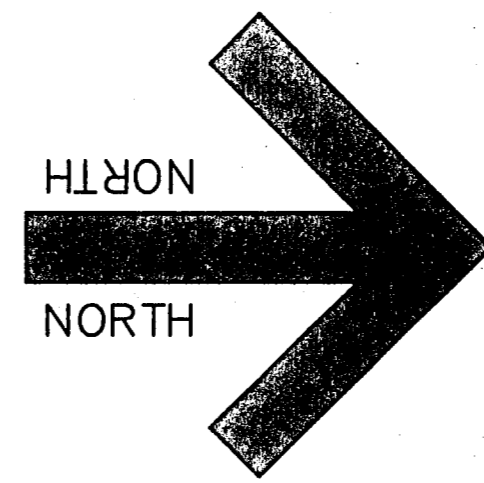


F:\jdr\p\1998\9804REV.dwg Tue Oct 06 09:52:43 1998 JDJR ENGINEERS & CONSULTANTS * STATION 1 * JDJ

ADDISON ROAD
(60' R.O.W.)



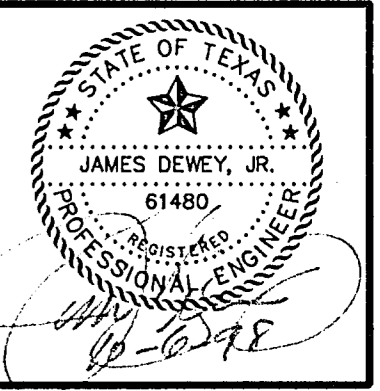
LEGEND

- E---E--- EXPANSION JOINT
- CONTRACTION JOINT
- FLOWLINE OR INVERT

NOTE:
SEE SHEET "C6" FOR DETAILS

BENCH MARK:
SQUARE CUT ON CONCRETE VAULT AT NORTHEAST
CORNER OF BELTLINE ROAD AND ADDISON ROAD.
ELEVATION = 634.20
BRASS CAP FOUND ON TOP OF INLET ON WEST
SIDE OF ADDISON ROAD 1000± NORTH OF BELTLINE ROAD.
ELEVATION = 628.21
TBM = FND "X" CUT AT NORTHWEST CORNER OF PROPERTY
OF ADDISON ROAD.
ELEVATION = 628.45

JDJR ENGINEERS & CONSULTANTS, INC.
ENGINEERS • LAND PLANNERS • CAD DESIGNS
2505 Texas Drive Suite 109 Irving, Texas 75062
Tel. 972-262-JDJR (5357) Fax 972-279-8860



PROJECT:
MAINSTAY SUITES OF ADDISON ADDITION
BELTLINE ROAD
ADDISON, TEXAS

REVISIONS:

DATE	REVISION
10/02/98	ARCH. COMMENTS

SHEET TITLE
JOINT
PATTERN
PLAN

DATE: 09/11/98
SCALE: 1" = 20'
DRAWN BY: J.N.M.
CHECKED BY: JDJR
SHEET NO.
C4 OF **6**
JDJR FILE NO. 98-045

ARAPAHO ROAD