

**PLUMBING FIXTURE SCHEDULE**  
**PLUMBING FIXTURE SCHEDULE**

**WATER CLOSET P-1**  
DESCRIPTION: FLOOR MTD. ELONGATED  
AMERICAN STD. NO. 2292100 - CADET TANK TYPE PA  
MATERIAL: VITREOUS CHINA  
COLOR: WHITE  
CONSUMPTION: SLOAN FLUSH-MATE TANK SYSTEM  
SEAT: OLSONITE NO. 95 WHITE PLASTIC WITH OPEN FRONT AND COVER  
ACCESSORIES: SUPPLY 4 STOPS: 3/8"x1/2" SUPPLY 4 STOP, RISER AND ESCUTCHEON, 4" FLR. FLANGE 4 BOWL WAX

**SINK P-4**  
DESCRIPTION: SELF RIMMING ELKAY LUSTERONE DLR SERIES  
MATERIAL: 304 STAINLESS STEEL, 18 GA.  
FAUCET AND FITTINGS: AMERICAN STANDARD \*2021100  
MODEL: ELKAY DLR-1122-10 (11"x22")  
SUPPLY 4 STOP: 3/8"x1/2" SUPPLY 4 STOP  
P-TRAP: 1 1/2" CAST BRASS W/ CLEANOUT FLUG  
ALL SINKS TO HAVE GARBAGE DISPOSAL

**WATER CLOSET P-1A**  
DESCRIPTION: FLOOR MTD. ELONGATED HANDICAPPED HEIGHT  
AMERICAN STD. NO. 2168100 - CADET TANK TYPE PA  
W/ FLUSH VALVE ON WIDE SIDE (ADA)  
TOP OF SEAT SHALL BE 17" TO 18" AFF  
MATERIAL: VITREOUS CHINA  
COLOR: WHITE  
CONSUMPTION: SLOAN FLUSH-MATE TANK SYSTEM  
SEAT: OLSONITE NO. 95 WHITE PLASTIC WITH OPEN FRONT AND COVER  
ACCESSORIES: SUPPLY 4 STOPS: 3/8"x1/2" SUPPLY 4 STOP, RISER AND ESCUTCHEON, 4" FLR. FLANGE 4 BOWL WAX

**SINK P-5**  
DESCRIPTION: SELF RIMMING SINGLE COMPARTMENT, MOP SINK  
MODEL: AMERICAN STANDARD \*1145811  
MATERIAL: ENAMELED CAST IRON  
FAUCET AND FITTINGS: AMERICAN STANDARD \*2345100 WALL MOUNTED SINK FACET

**LAVATORY P-2**  
DESCRIPTION: INTEGRAL WITH COUNTER TOP  
FAUCET: DELTA 520  
ACCESSORIES: 3/8"x1/2" SUPPLY 4 STOP  
P-TRAP: 1 1/4" CAST BRASS W/ CLEANOUT FLUG

**DISPOSER P-6**  
DESCRIPTION: IN-SINK-ERATOR MODEL BADGERI, 115V/60HZ, 1125 RPM.

**LAVATORY P-2A**  
DESCRIPTION: SAME AS P-2 EXCEPT COUNTER IS AT HANDICAPPED HEIGHT  
INSULATE EXPOSED DRAIN AND WATER W/ TRUEBRO LAVGUARD (SMALLER SHIRT PER ADA SEE ARCHITECTURAL)

**LAUNDRY SINK P-1**  
DESCRIPTION: FREE STANDING ELJER MODEL NO. 222-2210  
MATERIAL: ENAMELED CAST IRON  
FAUCET AND FITTINGS: TWO HANDLE GOOSENECK FAUCET 4 SWING SPOUT 4 AERATOR  
T45 BRASS AND BRONZE WORKS MODEL NO. B-0232  
COLOR: WHITE  
SUPPLY 4 STOP: 3/8"x1/2" SUPPLY 4 STOP  
P-TRAP: 1 1/2" CAST BRASS W/ CLEANOUT FLUG

**ELECTRIC WATER COOLER P-8**  
DESCRIPTION: WALL HUNG HI-LO ELECTRIC WATER COOLER  
MODEL NO: HAW5-HI-LO HUBFA8L/SK2

**TUB/SHOWER P-3**  
DESCRIPTION: BATH TUB 4 SHOWER  
MODEL NO. AMERICAN STANDARD FRINCETON 2391202 AND 239022  
W/ SLIP RESISTANT SURFACE  
COLOR: WHITE  
MATERIAL: AMERICAST  
SYMONS TEMPTROL 5-96-2-131 PRESSURE BALANCING MIXING VALVE WITH COMBO INTEGRAL DIVERTER 4 VOLUME CONTROL, 4 ADJUSTABLE STOP SCREW TO LIMIT HANDLE TURN, TUB SPOUT, SUPER SHOWER HEAD W/ ARM 4 FLANGE. CULTURED (MANMADE MARBLE) MARBLE TUB AND SHOWER SURROUND. TUB SURROUND TO BE VERMOX \*CENCOR FULL HEIGHT FROM TUB TO CEILING WITH 10" SEON COVERS AND END PANELS. PROVIDE FLUSH MOUNT TWO SOAP DISHES, ONE AT SHOWER HEIGHT AND ONE AT BATH HEIGHT. SEAL JOINTS WITH CORNING 8640 MILDEW RESISTANT CAULK.

**DISHWASHER P-9**  
DESCRIPTION: GE \*GSD32102AA

**TUB/SHOWER P-3A**  
SAME AS P-3  
W/ SHOWER KIT DELTA NO. 115133 W/ 60" HOSE  
SHOWER FLOOR SWAN NO. BF3060 W/ BF-1260 RAMP

**STOVE P-10**  
DESCRIPTION: GE \*GGB15A0Y

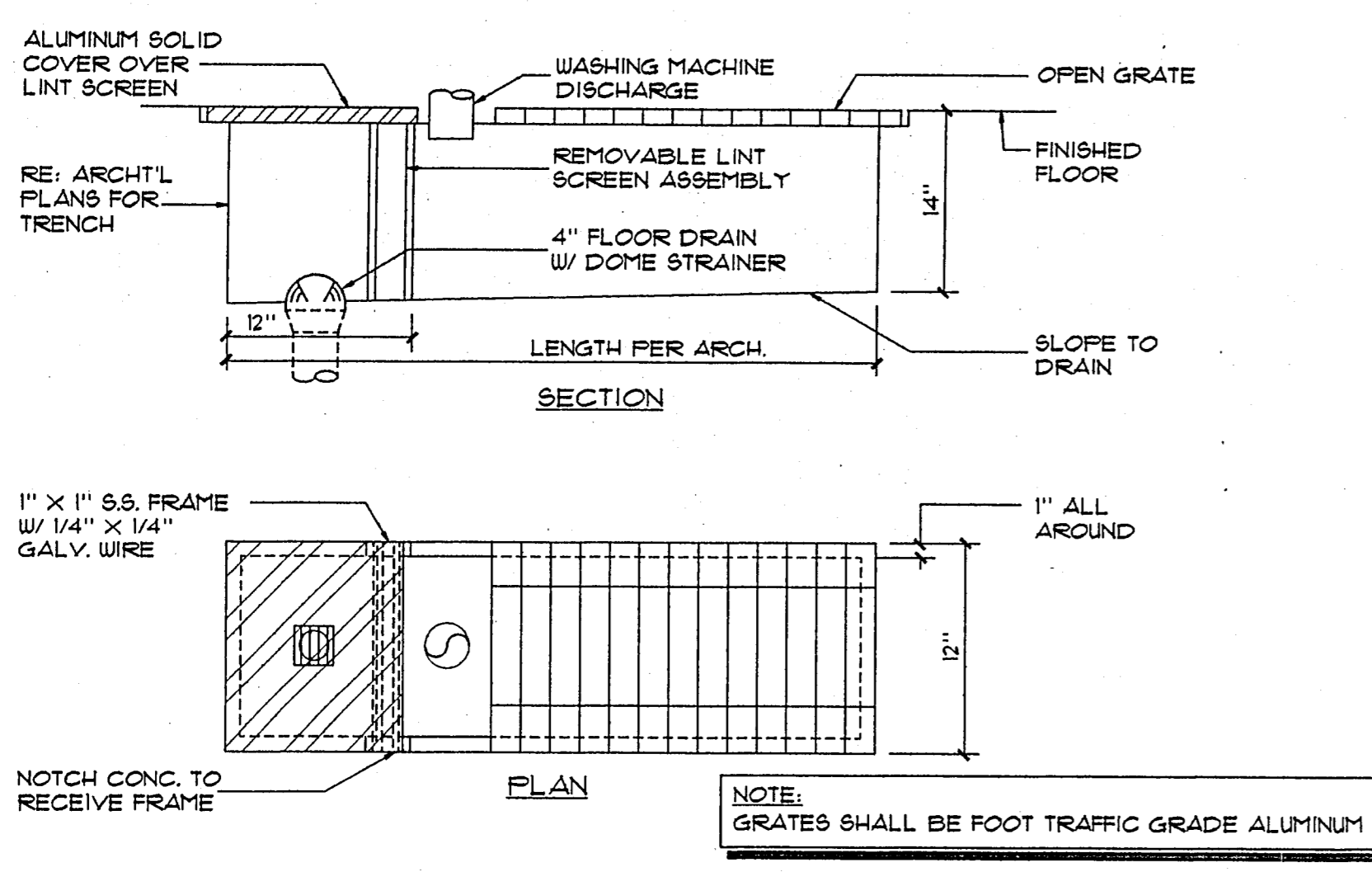
**HOT TUB P-11**  
DESCRIPTION: AMERICAN STANDARD ELLISSE 6'x48" \*1711020GD WHITE WITH UNIVERSAL TILE BEAD KIT 15155-100, DECK MOUNTED ON/OFF CONTROL BEZEL \*3861100002, METAL GRAB BAR KIT: 9836011002, BRASS ROTARY DRAIN \*1513210002 CHROME FINISH, TUB FILLER \*934000002 AND HANDLE KIT \*200552002 ELECTRICAL SPECIFICATIONS 1 HP 102 AMP 115 V

**HOT TUB P-11A (ADA)**  
DESCRIPTION: AMERICAN STANDARD ELLISSE 6'x48" \*1711020GD (ADA TUB) WHITE WITH UNIVERSAL TILE BEAD KIT 15155-100, DECK MOUNTED ON/OFF CONTROL BEZEL \*3861100002, METAL GRAB BAR KIT: 9836011002, BRASS ROTARY DRAIN \*1513210002 CHROME FINISH, TUB FILLER \*934000002 AND HANDLE KIT \*200552002 ELECTRICAL SPECIFICATIONS 1 HP 102 AMP 115 V HAND HELD SHOWER HEAD

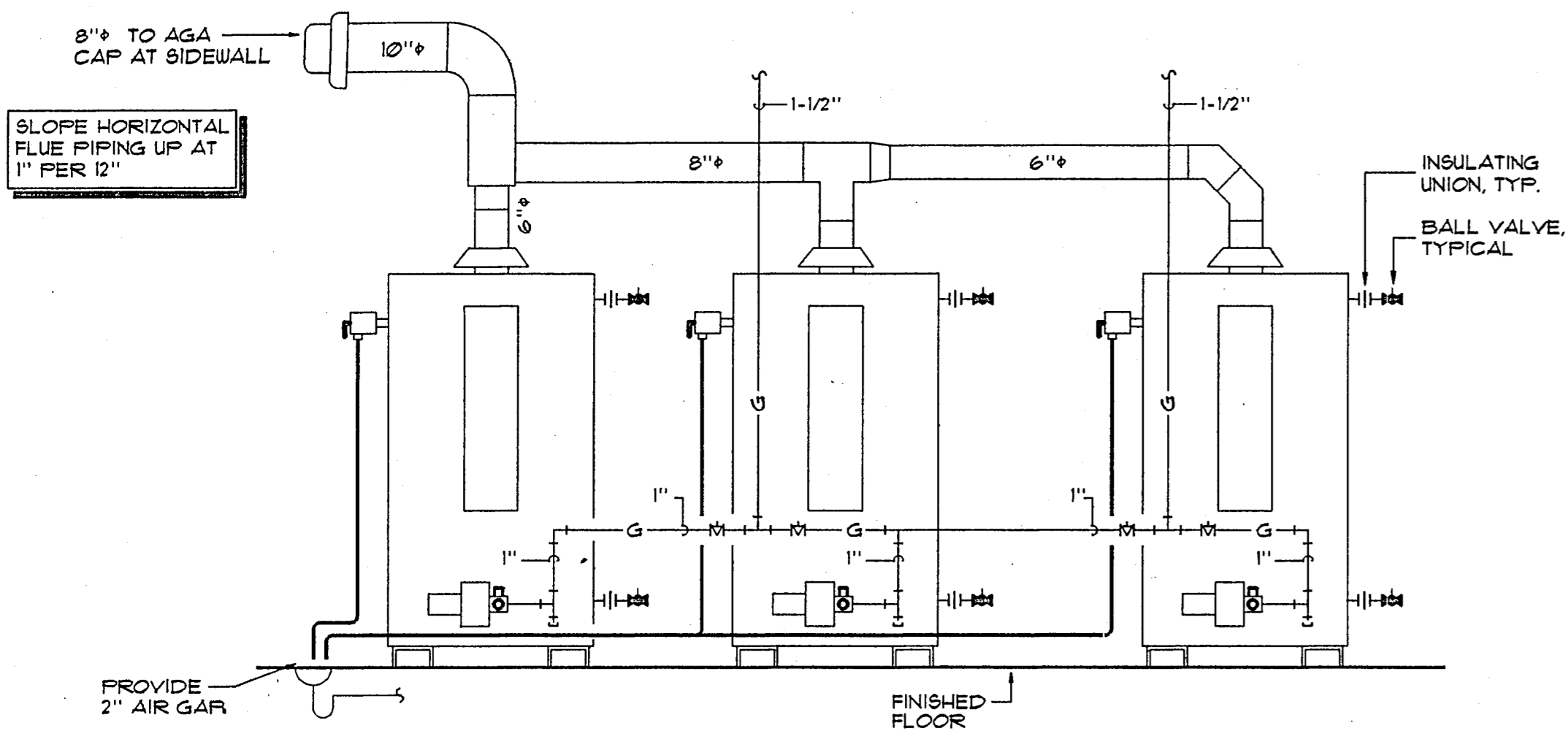
**SINK P-12**  
DESCRIPTION: SELF RIMMING THREE COMPARTMENT SINK  
MATERIAL: 304 STAINLESS STEEL, 18 GA.  
FAUCET AND FITTINGS: ELKAY LK-66-A  
MODEL: ELKAY UNSF-8345 21" LONG  
SUPPLY 4 STOP: 3/8"x1/2" SUPPLY 4 STOP  
P-TRAP: 1 1/2" CAST BRASS W/ CLEANOUT FLUG

**CIRCULATING PUMP SCHEDULE**

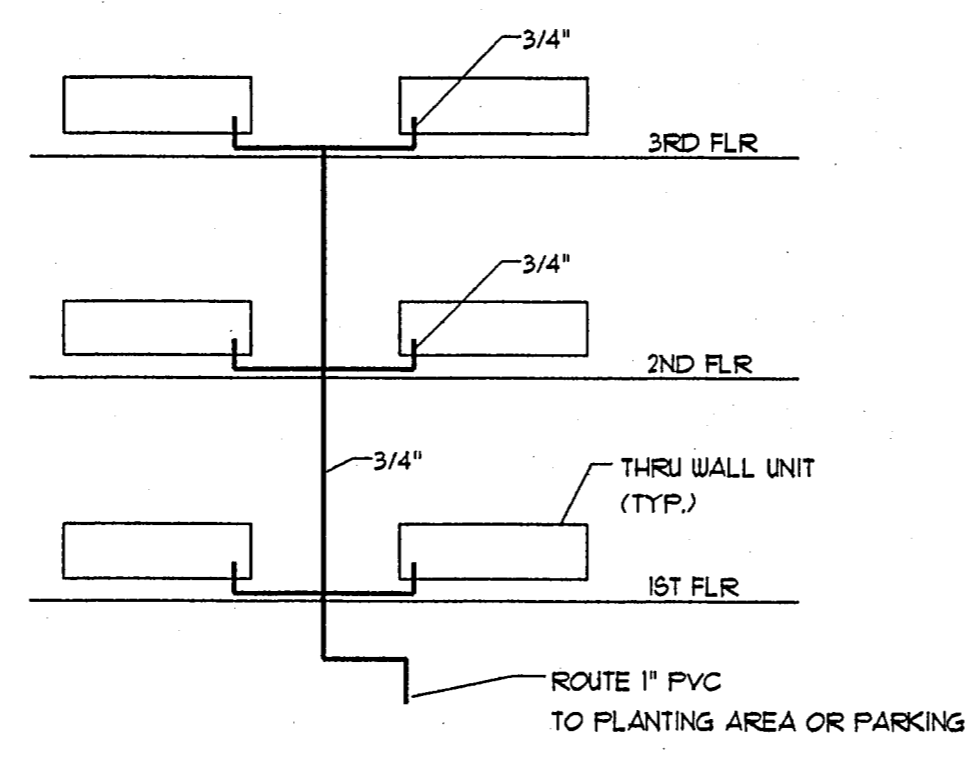
C-1 105 HOT WATER CIRCULATOR 14 GPM AT 20' HEAD, ALL-BRONZE GRUNDFOS MODEL UP 43-15EF WITH 1/6 HP MOTOR, 115 VOLTS/1 PH.  
ACCESSORIES: AQUASTAT 105 TO 105'.  
C-2 160 HOT WATER CIRCULATOR 9 GPM AT 20' HEAD, ALL-BRONZE GRUNDFOS MODEL UP 26-36 EF WITH 1/2 HP MOTOR, 115 VOLTS/1 PH.  
ACCESSORIES: AQUASTAT 150 TO 150'.  
TEMPERING VALVE: 105 HOT WATER VALVE: HOLBY SIZE 2".



**1 LAUNDRY TRENCH DETAIL**  
NOT TO SCALE



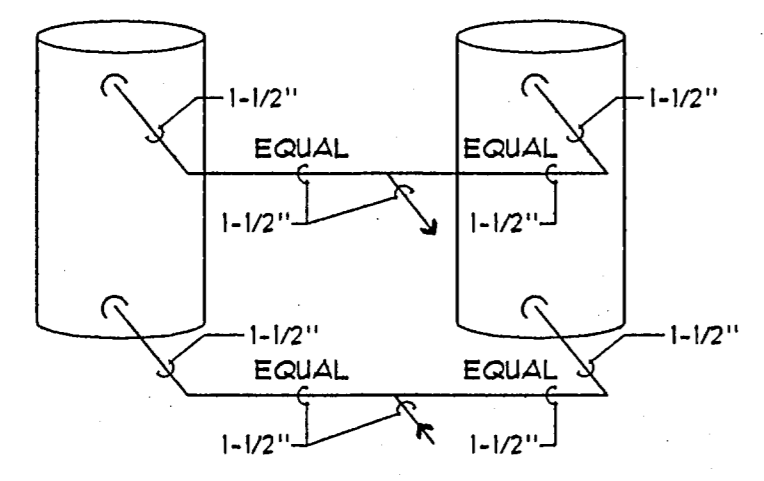
**2 WATER HEATER PIPING SCHEMATIC**  
NO SCALE



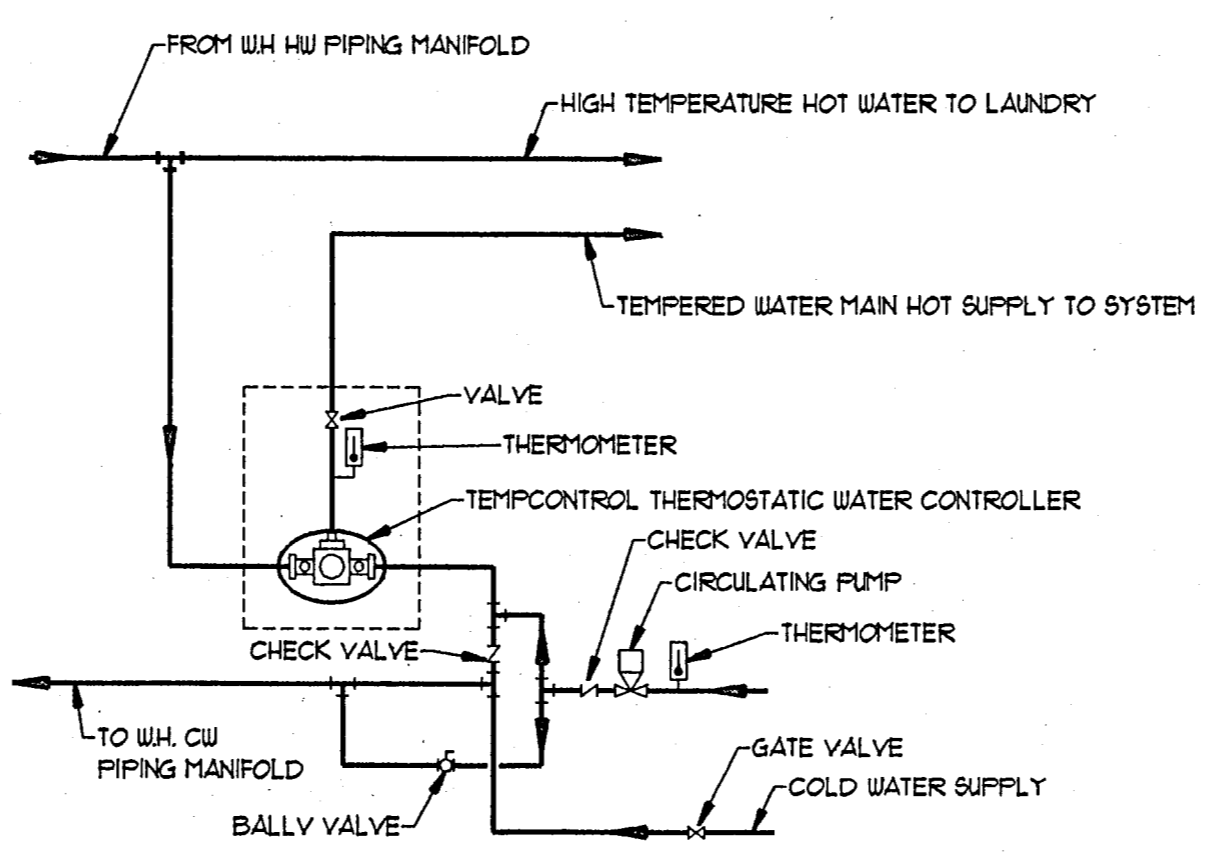
**4 ROOM A/C PIPING SCHEMATIC**  
NO SCALE

**GAS WATER HEATER SCHEDULE**

NAME	DESCRIPTION	GPH RECOVERY	RISE	WATER TEMP. LVG.	STOR. CAP. GALS.	INPUT BTU/HR	WATTS RELIEF VALVE 4 MODEL NO.	MANUFACTURER 4 MODEL NO.	REMARKS
WH-123	GAS WH	210	120'	140'	100	193,999	140XL(M)	RHEEM RFD-250-86-1	



**3 WATER HEATER MANIFOLD SCHEMATIC**  
NO SCALE



**5 THERMOSTATIC MIXING VALVE PIPING**  
NO SCALE

