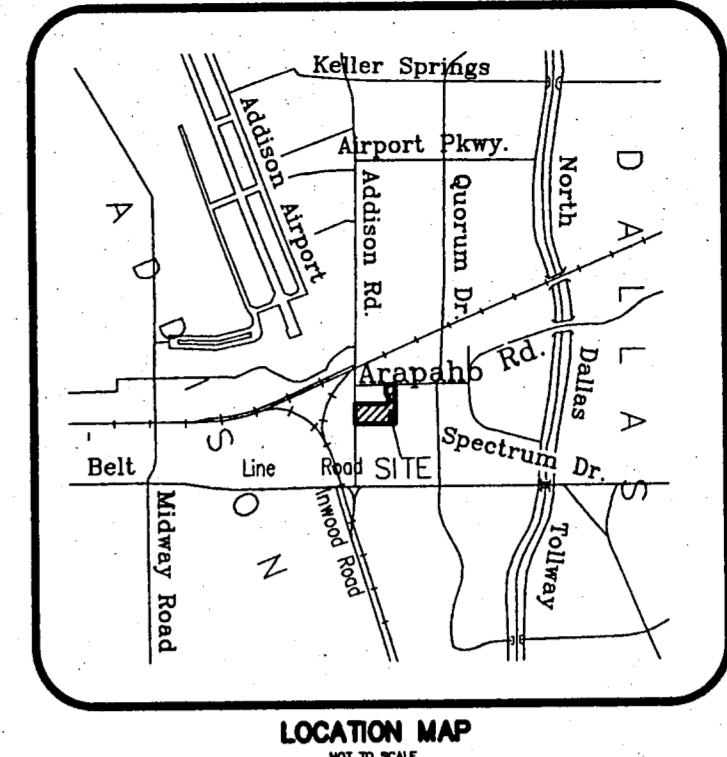
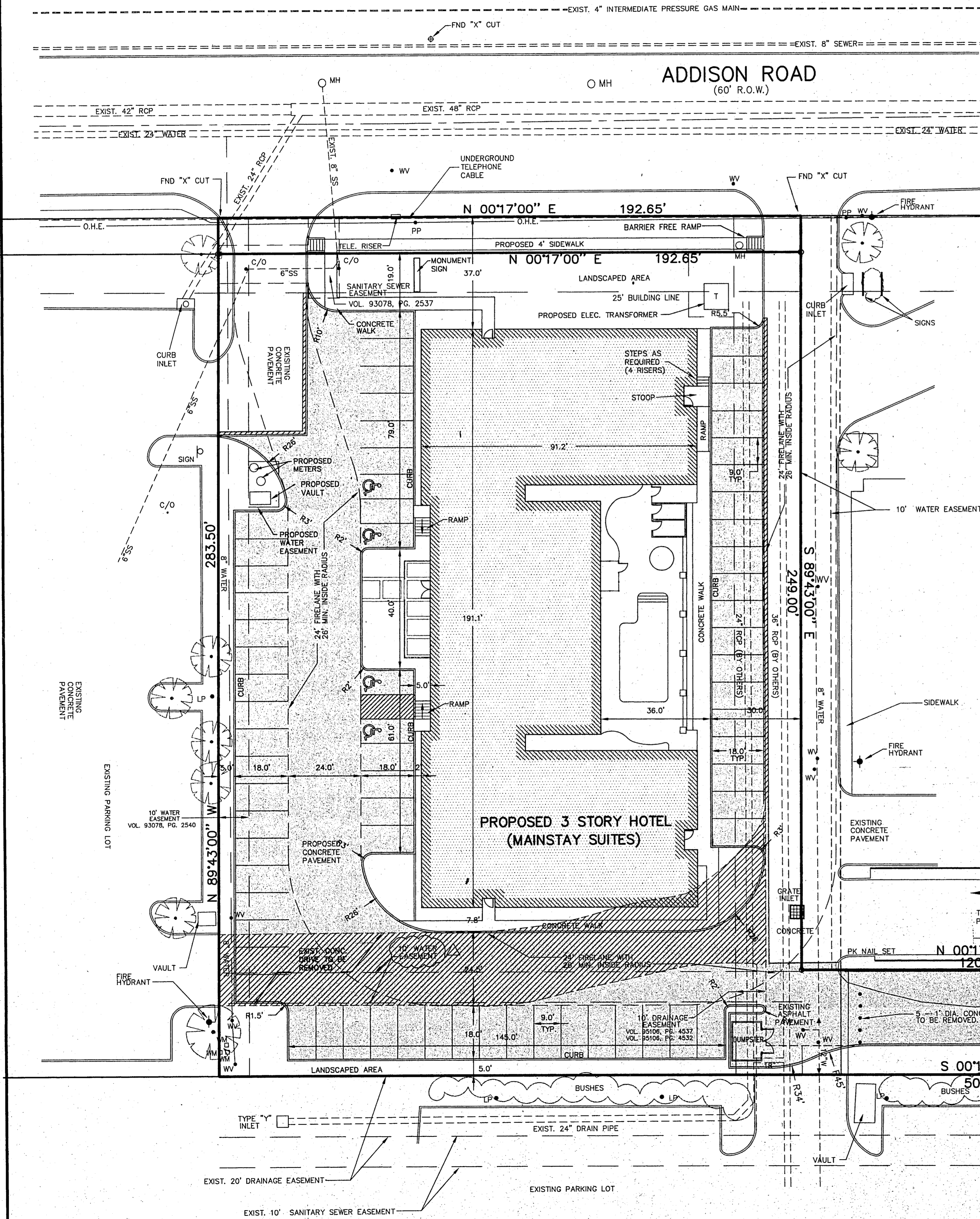


F:\jdr\proj\1998\9805REV1.dwg Mod Nov 04 09:25:37 1998 JDJR ENGINEERS & CONSULTANTS * STATION 1 * JDJR



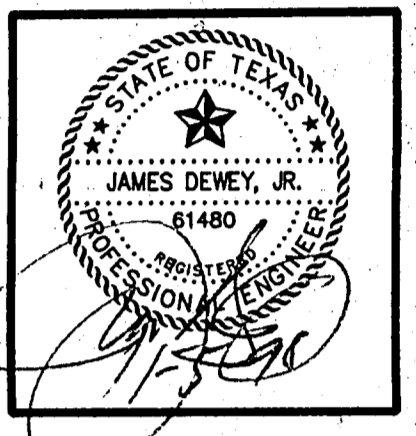
NOTES:

1. ALL CONSTRUCTION TO BE DONE IN STRICT ACCORDANCE TO THESE PLANS AND ALL APPLICABLE MUNICIPAL CODES AND STANDARDS.
2. ALL DIMENSIONS SHOWN ARE TO THE BACK OF CURB UNLESS OTHERWISE NOTED
3. SEE ARCHITECTURAL PLANS FOR ALL BUILDING DIMENSIONS AND DETAILS.
4. SEE SHEET C2 FOR ALL PAVING AND GRADING PLANS
5. SEE SHEET C3 FOR EROSION CONTROL PLANS
6. SEE SHEET C4 FOR PAVEMENT JOINT LOCATIONS AND DETAILS
7. SEE SHEET C5 FOR LOCATIONS AND DETAILS OF UTILITY SERVICES TO BUILDING
8. SEE SHEET C6 FOR PAVING & EROSION CONTROL DETAILS.

NOTES:

- INDICATES EXISTING CONCRETE PAVEMENT TO BE REMOVED
- INDICATES NEW CONCRETE PAVEMENT

JDJR ENGINEERS & CONSULTANTS, INC.
 ENGINEERS • LAND PLANNERS • CAD DESIGNS
 2505 Texas Drive, Suite 109, Irving, Texas 75062
 Tel. 972-262-1249 (6357) Fax. 972-273-8880



PROJECT: MAINSTAY SUITES OF ADDISON ADDITION
 BELTLINE ROAD
 ADDISON, TEXAS

REVISIONS:

DATE	REVISION
11/02/98	PUBLIC WORKS COMMENTS

SHEET TITLE
 SITE DIMENSIONAL CONTROL PLAN

DATE: 09/11/98
 SCALE: 1" = 20'
 DRAWN BY: J.N.M.
 CHECKED BY: JDJR
 SHEET NO. **C1 OF 6**
 JDJR FILE NO. 98-045

ARAPAHO ROAD