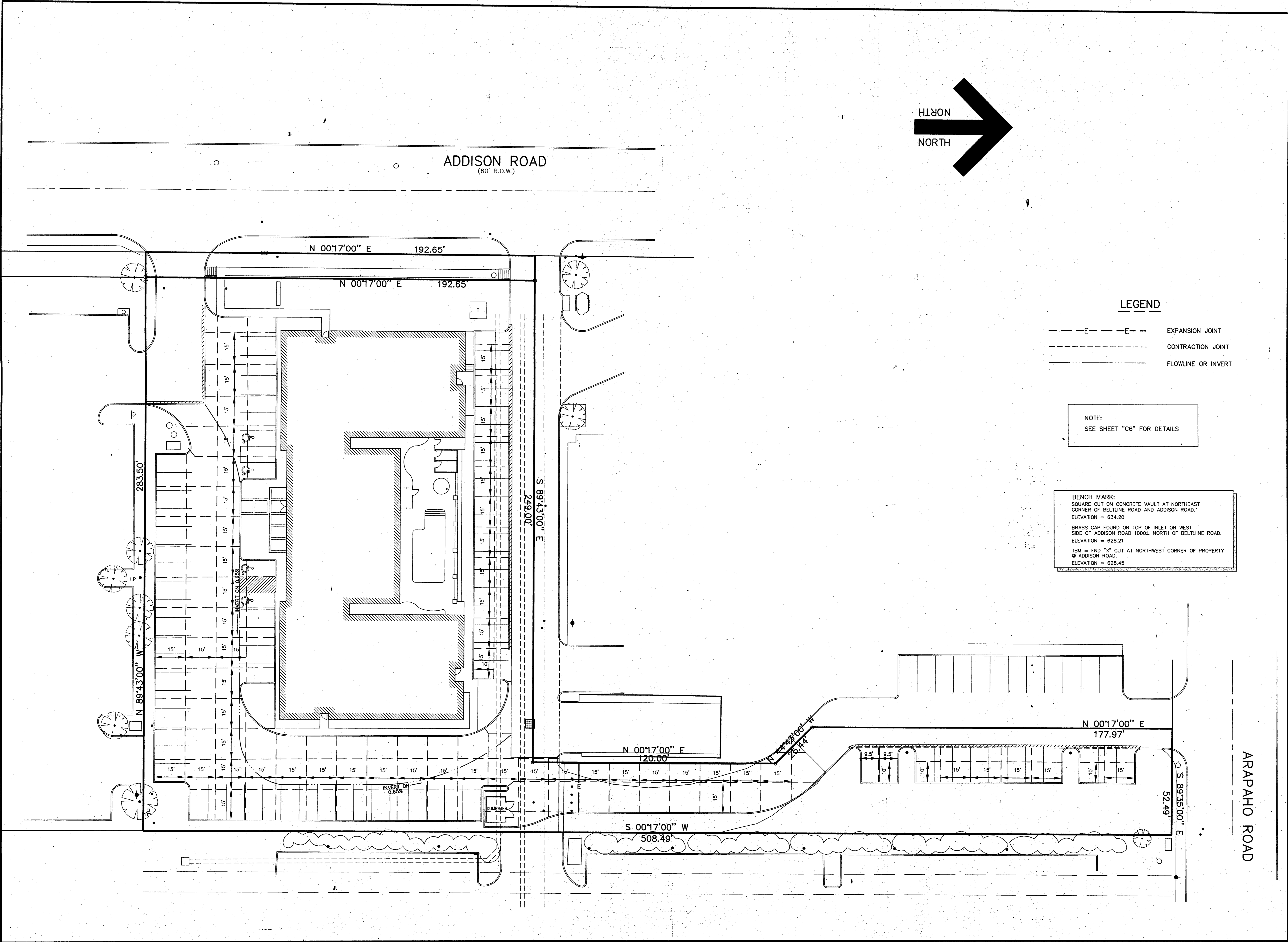


F:\jdr\proj\1998\980406REV.dwg Wed Nov 04 10:55:05 1998 JDJR ENGINEERS & CONSULTANTS * STATION 1 * JDU



ADDISON ROAD
(60' R.O.W.)

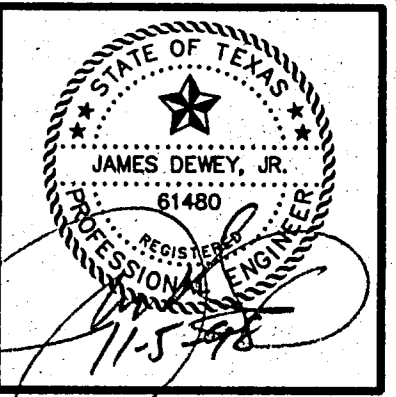
LEGEND

- E---E--- EXPANSION JOINT
- CONTRACTION JOINT
- FLOWLINE OR INVERT

NOTE:
SEE SHEET "C6" FOR DETAILS

BENCH MARK:
SQUARE CUT ON CONCRETE VAULT AT NORTHEAST CORNER OF BELTLINE ROAD AND ADDISON ROAD.
ELEVATION = 634.20
BRASS CAP FOUND ON TOP OF INLET ON WEST SIDE OF ADDISON ROAD 1000± NORTH OF BELTLINE ROAD.
ELEVATION = 628.21
TBM = FND "X" CUT AT NORTHWEST CORNER OF PROPERTY
@ ADDISON ROAD.
ELEVATION = 628.45

JDJR ENGINEERS & CONSULTANTS, INC.
ENGINEERS • LAND PLANNERS • CAD DESIGNS
2505 Texas Drive Suite 09 Irving, Texas 75002
Tel: 972-252-JDJR (6357) Fax: 972-273-8880



PROJECT:
MAINSTAY SUITES OF ADDISON ADDITION
BELTLINE ROAD
ADDISON, TEXAS

REVISIONS:

| DATE | REVISION |
|----------|-----------------------|
| 11/02/98 | PUBLIC WORKS COMMENTS |

SHEET TITLE
JOINT PATTERN PLAN

DATE: 09/11/98
SCALE: 1" = 20'
DRAWN BY: J.N.M.
CHECKED BY: JDJR
SHEET NO.
C4 of 6
JDJR FILE NO. 98-045

ARAPAHO ROAD