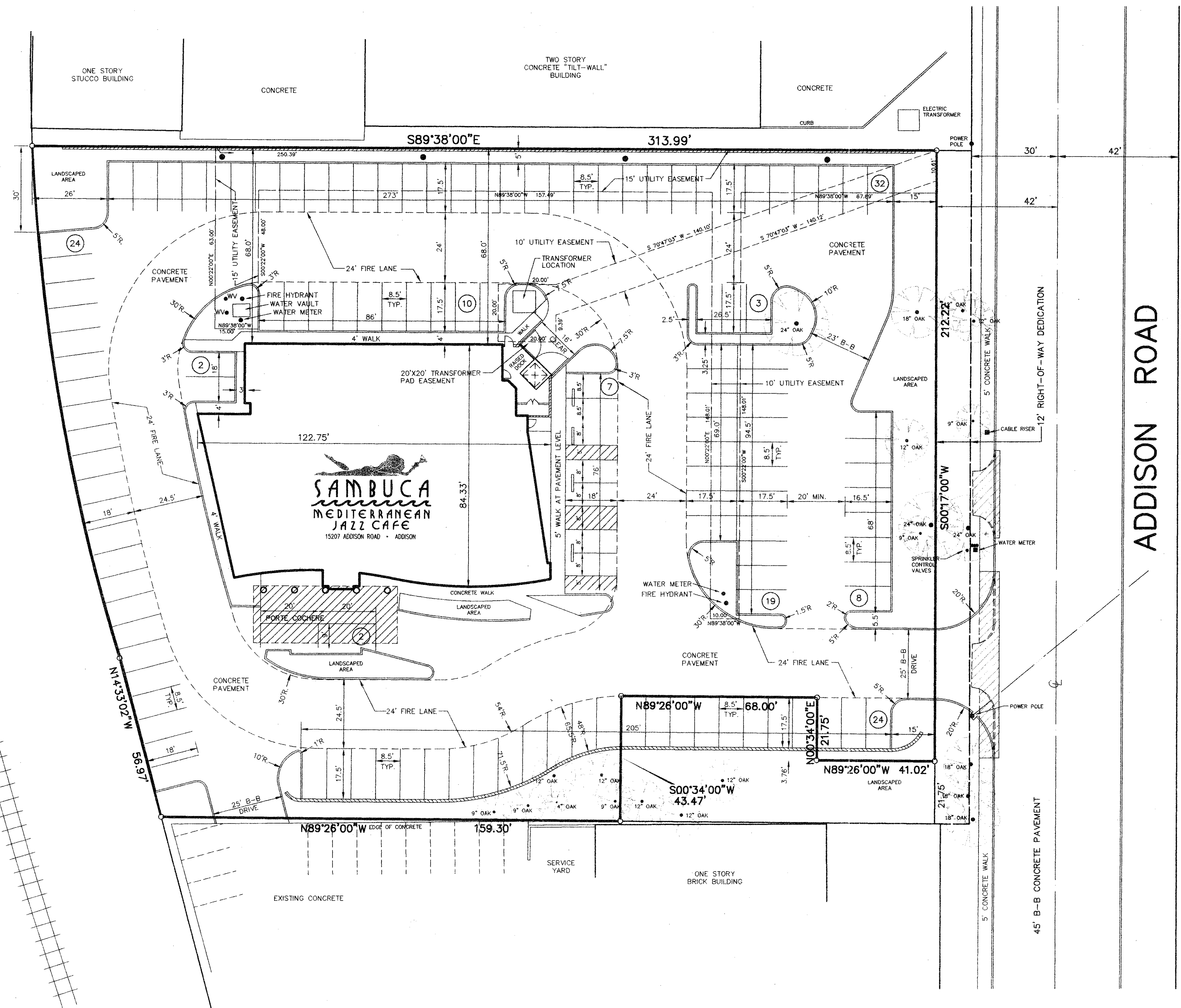


ST. LOUIS & SOUTHWESTERN RAILROAD

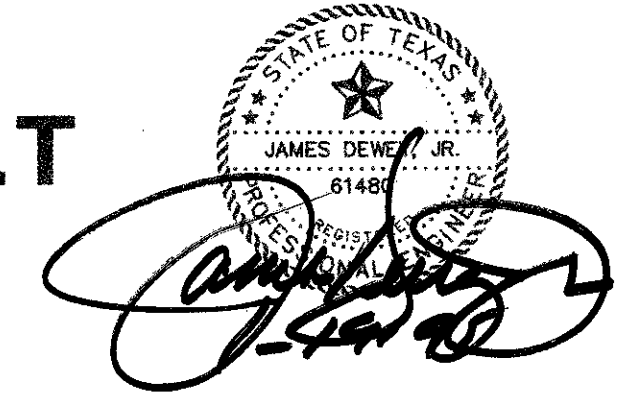


Sanitary sewer  
Storm sewer  
Water Main

- NOTES:
1. ALL CONSTRUCTION TO BE DONE IN STRICT ACCORDANCE TO THESE PLANS AND ALL APPLICABLE MUNICIPAL CODES AND STANDARDS.
  2. ALL DIMENSIONS SHOWN ARE TO THE BACK OF CURB UNLESS OTHERWISE NOTED.
  3. SEE ARCHITECTURAL PLANS FOR ALL BUILDING DIMENSIONS, BUILDING DETAILS, AND DETAILS OF ALL AREAS ADJACENT TO BUILDING (ENTRANCE AREA AND SERVICE AREA).
  4. SEE SHEET C-3 FOR ALL PAVING AND GRADING PLANS.
  5. SEE SHEET C-3 FOR ALL CONCRETE RETAINING WALL DETAILS.
  6. SEE SHEET C-5 FOR EROSION CONTROL PLAN AND DETAILS.
  7. SEE SHEET C-6 FOR PAVEMENT JOINT LOCATIONS AND DETAILS.
  8. SEE SHEET C-7 FOR LOCATIONS AND DETAILS OF UTILITY SERVICES TO BUILDING.
  9. ALL MATERIALS AND WORKMANSHIP SHALL CONFORM TO THE STANDARD SPECIFICATIONS FOR PUBLIC WORKS CONSTRUCTION FOR NORTH CENTRAL TEXAS, LATEST EDITION, AND ANY SPECIAL PROVISION AS APPROVED BY THE DIRECTOR OF PUBLIC WORKS.

TO THE BEST OF MY KNOWLEDGE, THIS PROJECT WAS DESIGNED AND CONSTRUCTED IN ACCORDANCE TO THE TOWN OF ADDISON CONSTRUCTION SPECIFICATIONS AND STANDARDS. THE IMPROVEMENTS AS CONSTRUCTED (SHOWN HEREON) FUNCTION AS DESIGNED.

**AS BUILT**



REVISIONS:	
DATE	DESCRIPTION
1-19-95	AS BUILT

PREPARED BY:  
**DEWEY & ASSOCIATES**  
ENGINEERING, SURVEYING  
LAND PLANNING, CAD DESIGNS  
2505 TEXAS DRIVE, SUITE 110 - IRVING, TEXAS 75062 - 214/285-1501

PROJECT: SAMBUCA II RESTAURANT  
OWNER:  
SAMBUCA GROUP  
18333 N. PRESTON ROAD SUITE 215  
DALLAS, TEXAS 75252  
PHONE: (214)931-3440

SHEET TITLE  
**SITE DIMENSIONAL CONTROL PLAN**  
DATE: MARCH 11, 1994  
SCALE: 1" = 20'  
DRAWN BY: SAS (ACAD)  
CHECKED BY: JDJ  
SHEET NO.  
**C1 OF 7**