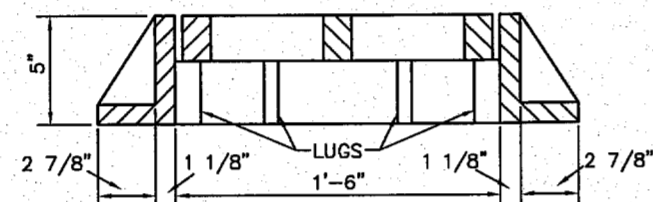
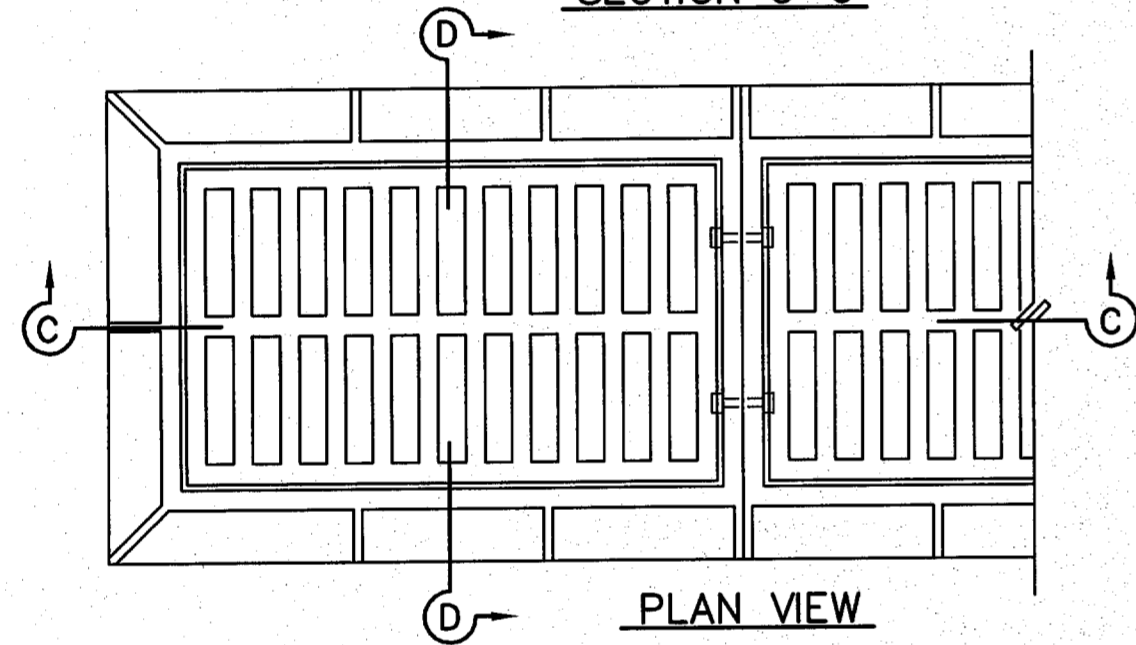


SECTION C-C



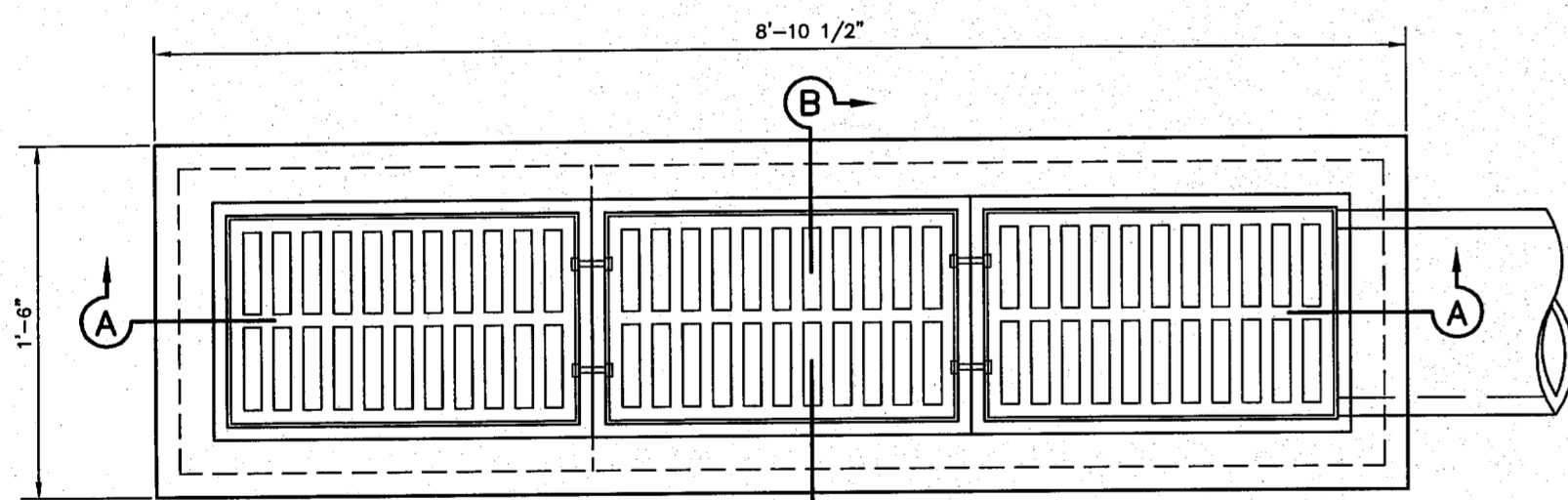
SECTION D-D

FRAME AND GRATE SHALL BE PATTERN NO. 814 AS MANUFACTURED BY BASS & HAYS FOUNDRY, OR APPROVED EQUAL.



PLAN VIEW

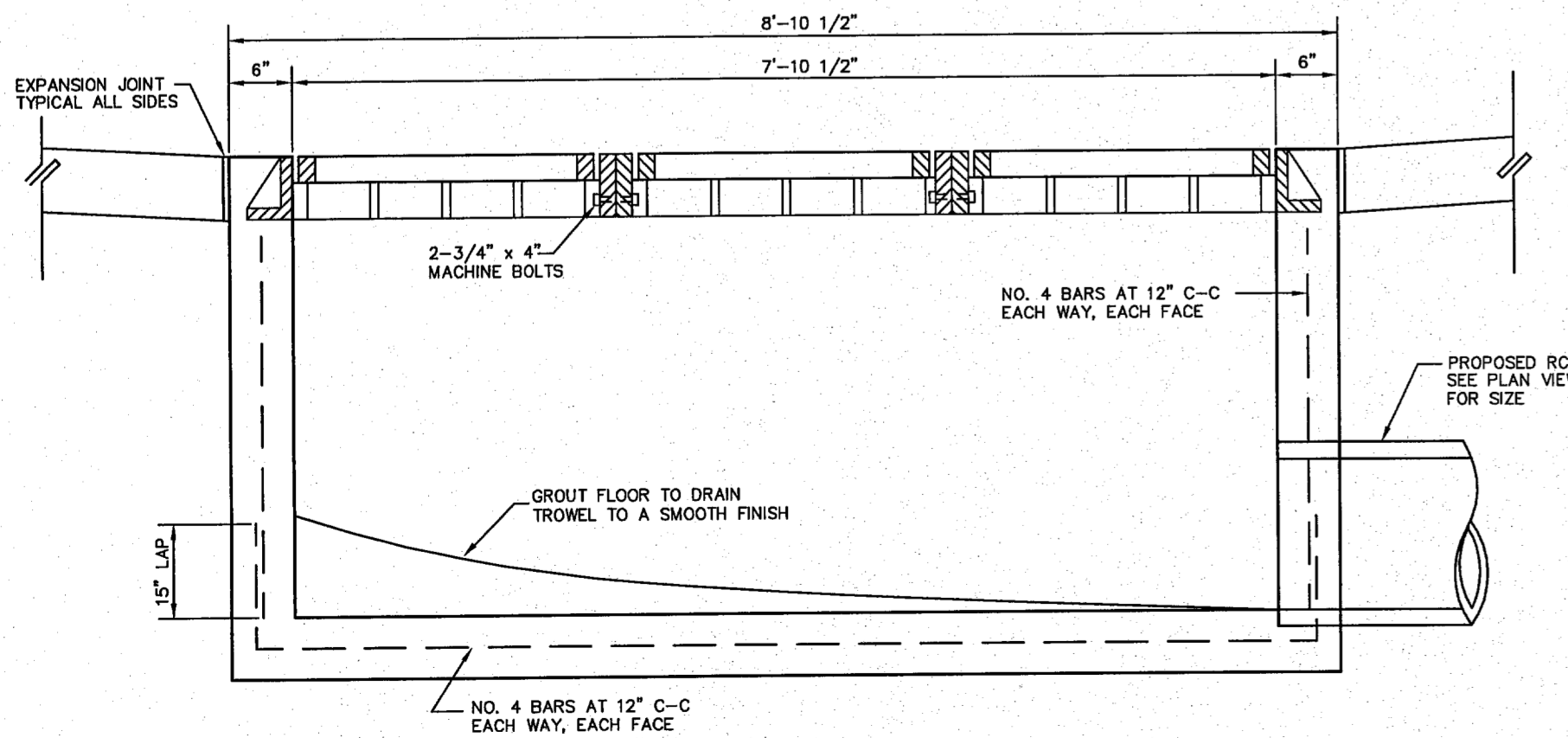
GRATE DETAILS



PLAN VIEW

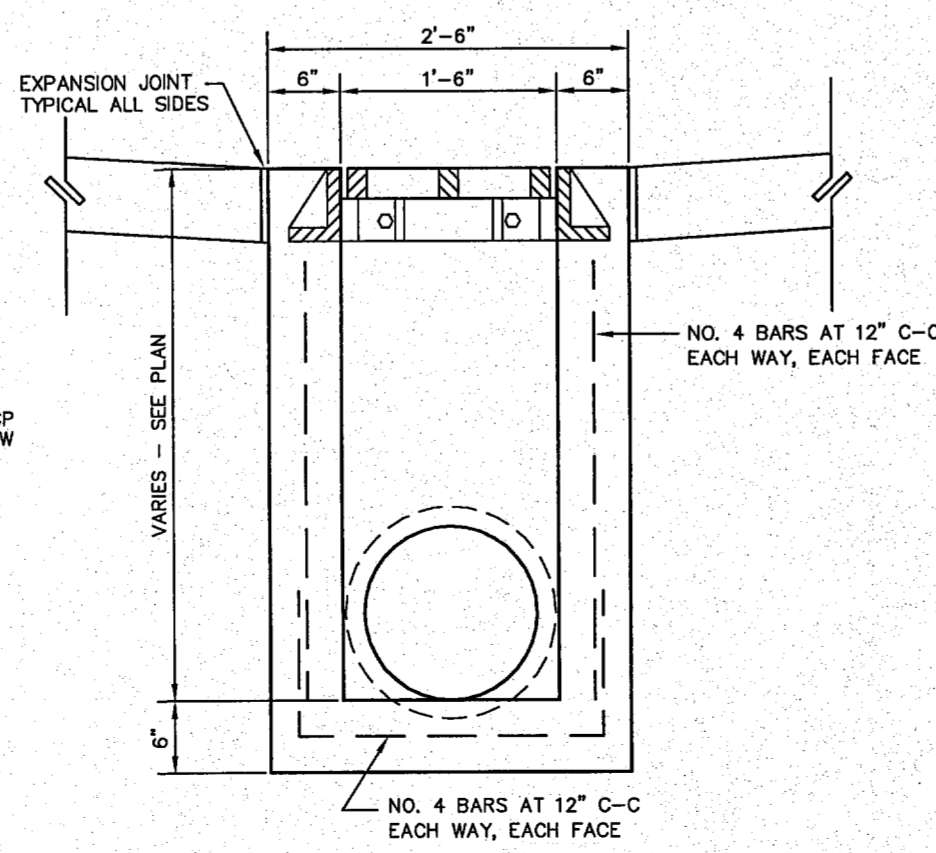
NOTES:

1. ALL LAPS AND EXTENSIONS OF REINFORCING BARS SHALL BE 30 BAR DIAMETERS UNLESS NOTED OTHERWISE.
2. TACK WELD GRATES IN PLACE OR USE GRATE LOCK.
3. PIPE MAY BE PLACED IN ANY WALL, BUT SHALL NOT ENTER ANY CORNER, OR BOTTOM.
4. CONCRETE TO BE A MINIMUM OF 4200 P.S.I.

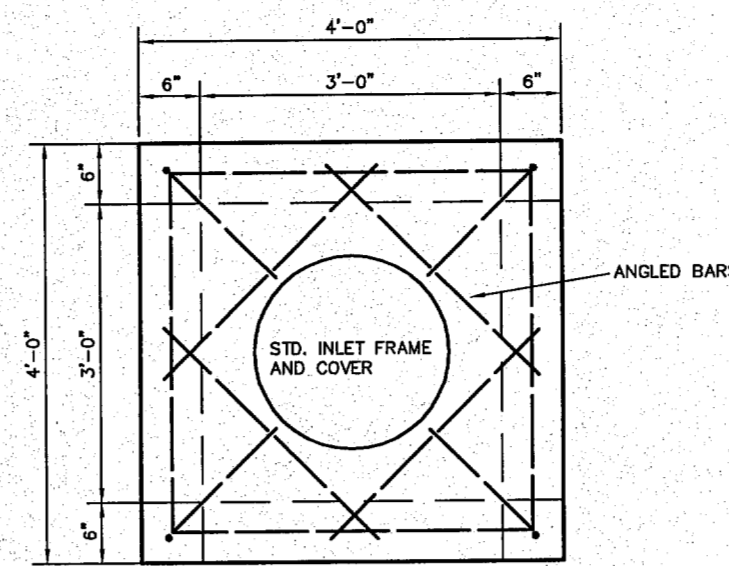


SECTION A-A

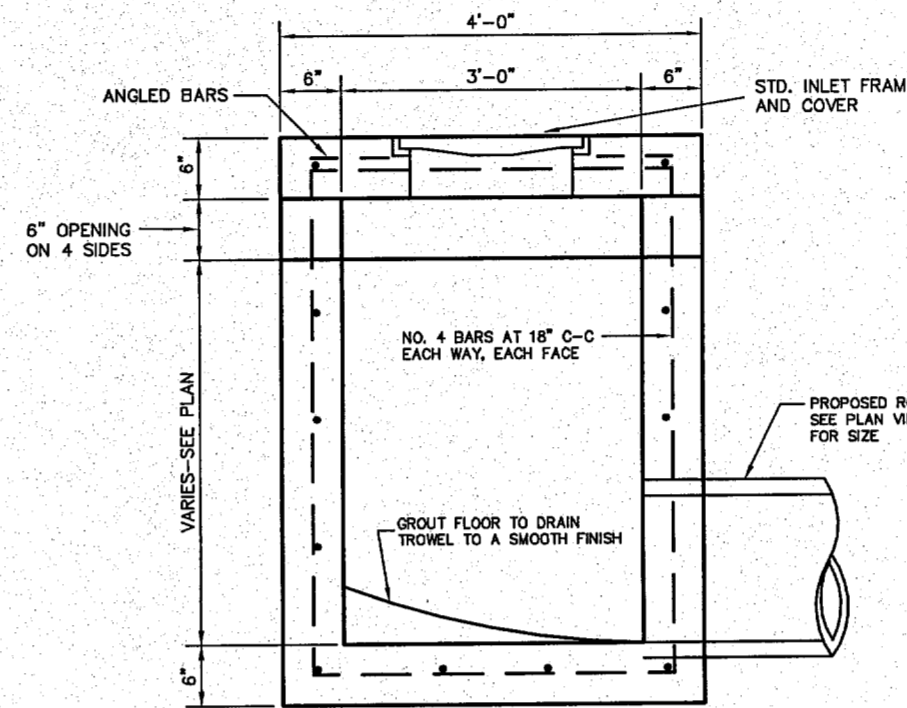
GRATE INLET DETAILS



SECTION B-B



PLAN VIEW

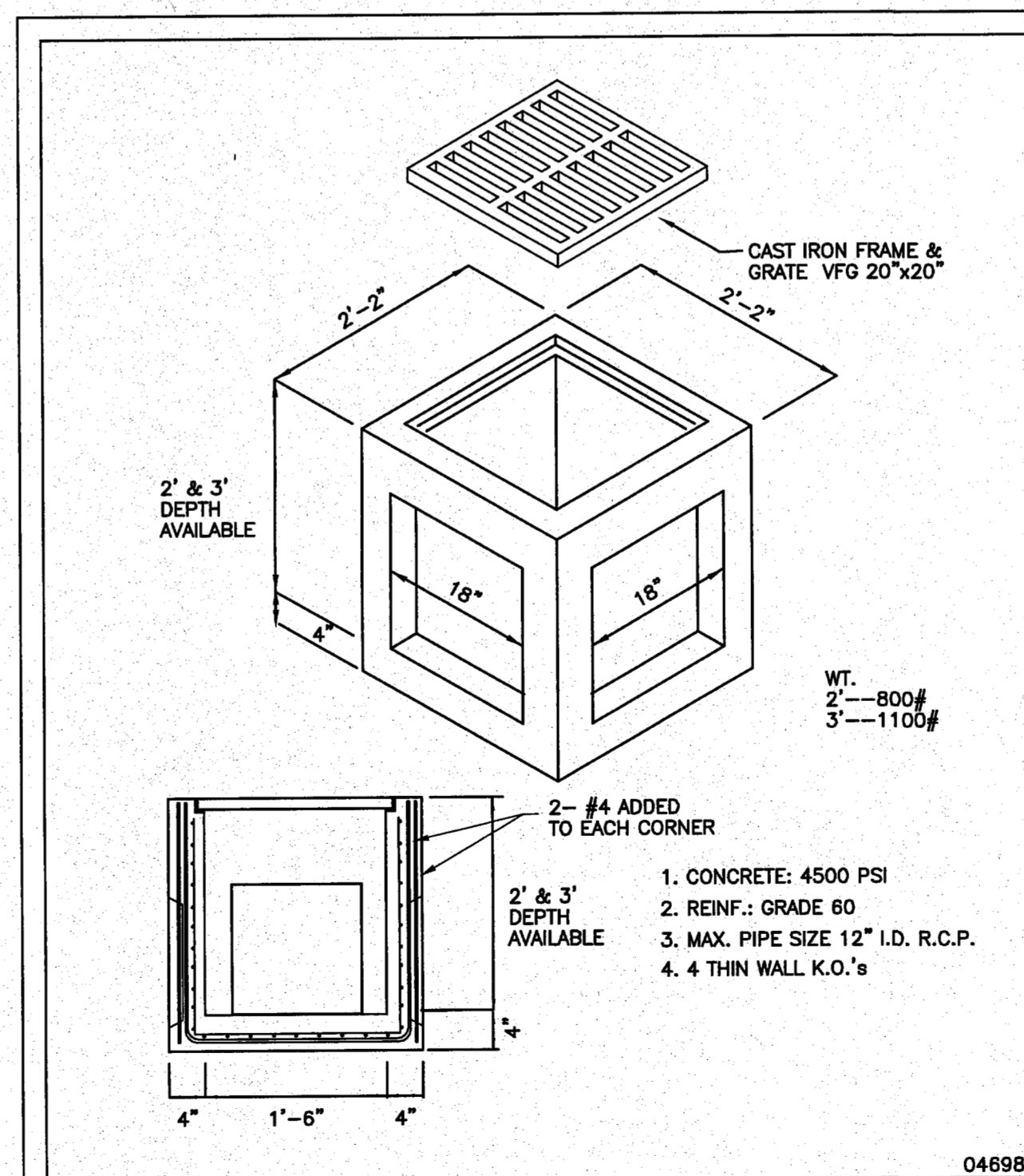


SECTION VIEW

NOTES:

1. ALL CONCRETE SHALL BE CLASS "A"
2. LATERAL PIPE MAY ENTER AT ANY LOCATION.

Y-INLET DETAILS

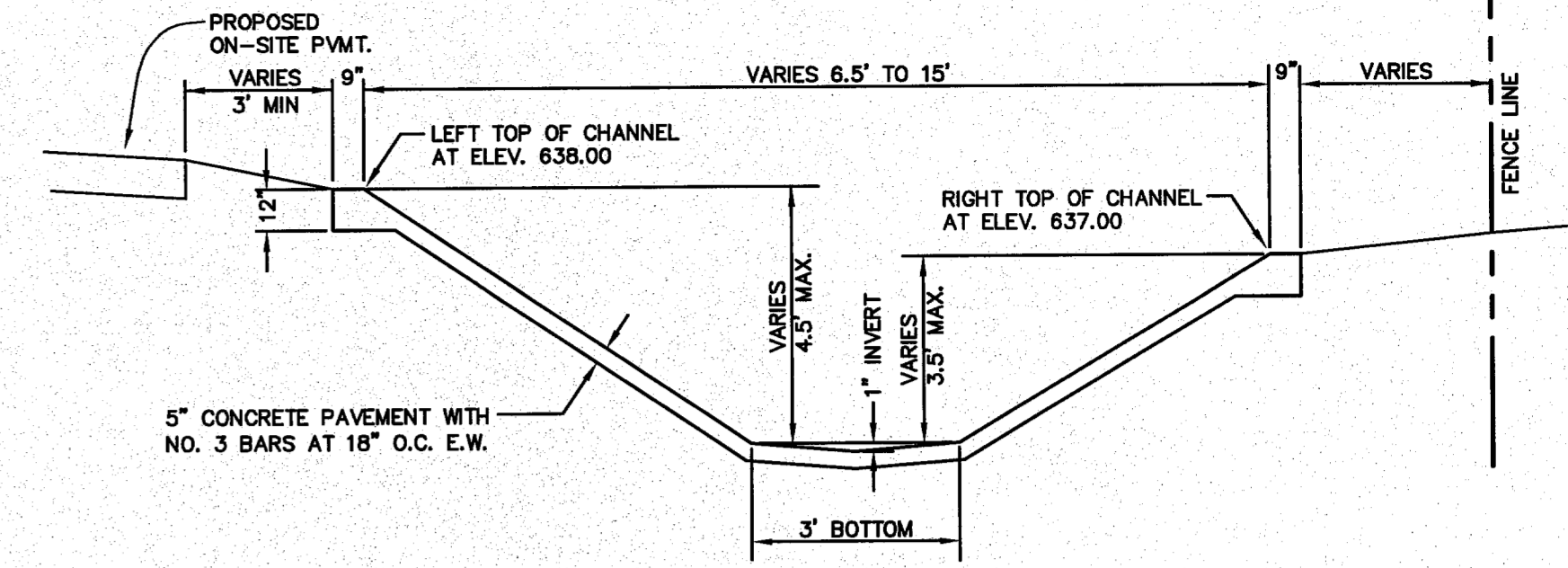


04698

CATCH BASIN NO. 20

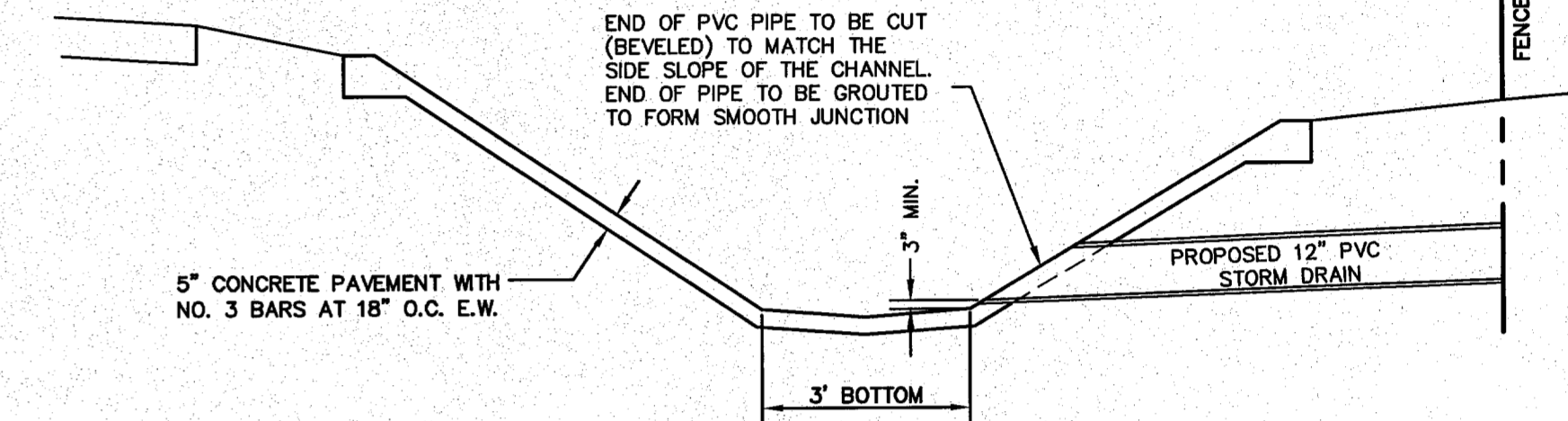


American Industrial Pre-Cast Products, Inc.
P.O. BOX 365 ALVARADO, TEXAS 76009. METRO: 817-477-5286
501 EAST BAXTER SEGUIN, TEXAS 78155 210-401-0555



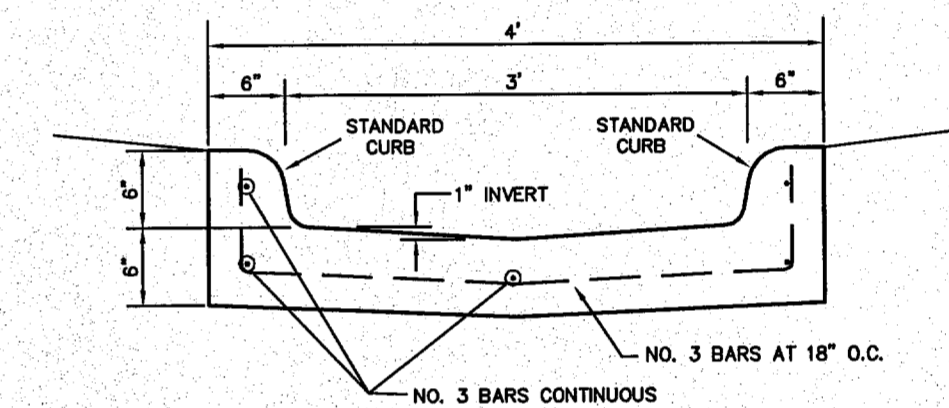
CONCRETE CHANNEL LINER SECTIONAL DETAIL

NOT TO SCALE



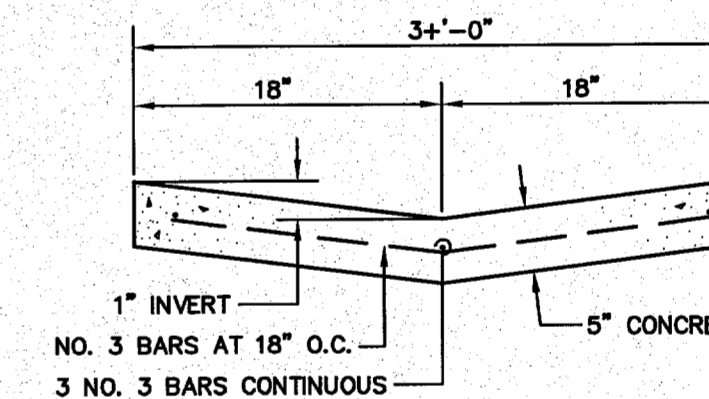
12" PVC OUTFALL AT CONCRETE CHANNEL DETAIL

NOT TO SCALE



CURBED FLUME DETAIL

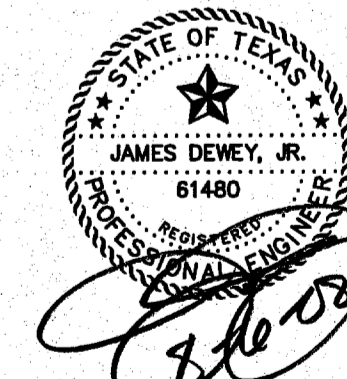
NOT TO SCALE



CONCRETE FLUME DETAIL

NOT TO SCALE

REVISIONS:	
7/25/08	CITY COMMENTS



SHEET TITLE:
STORM DRAIN DETAILS
HANGER ADDITION PLANS FOR
EXECUTIVE HANGAR OWNERS ASSOCIATION OF ADDISON
ADDISON AIRPORT
ADDISON, TEXAS

PREPARED BY:
JDJR ENGINEERS AND CONSULTANTS
ENGINEERS • SURVEYORS • LAND PLANNERS
2800 Texas Drive Suite 100 Irving, Texas 75082
Tel 972-262-5357 Fax 972-262-8958

DATE: APR. 8, 2008 DRAWN BY: SAS SHEET NO.
SCALE: AS SHOWN CHECKED BY: JDJR **C8** of 10