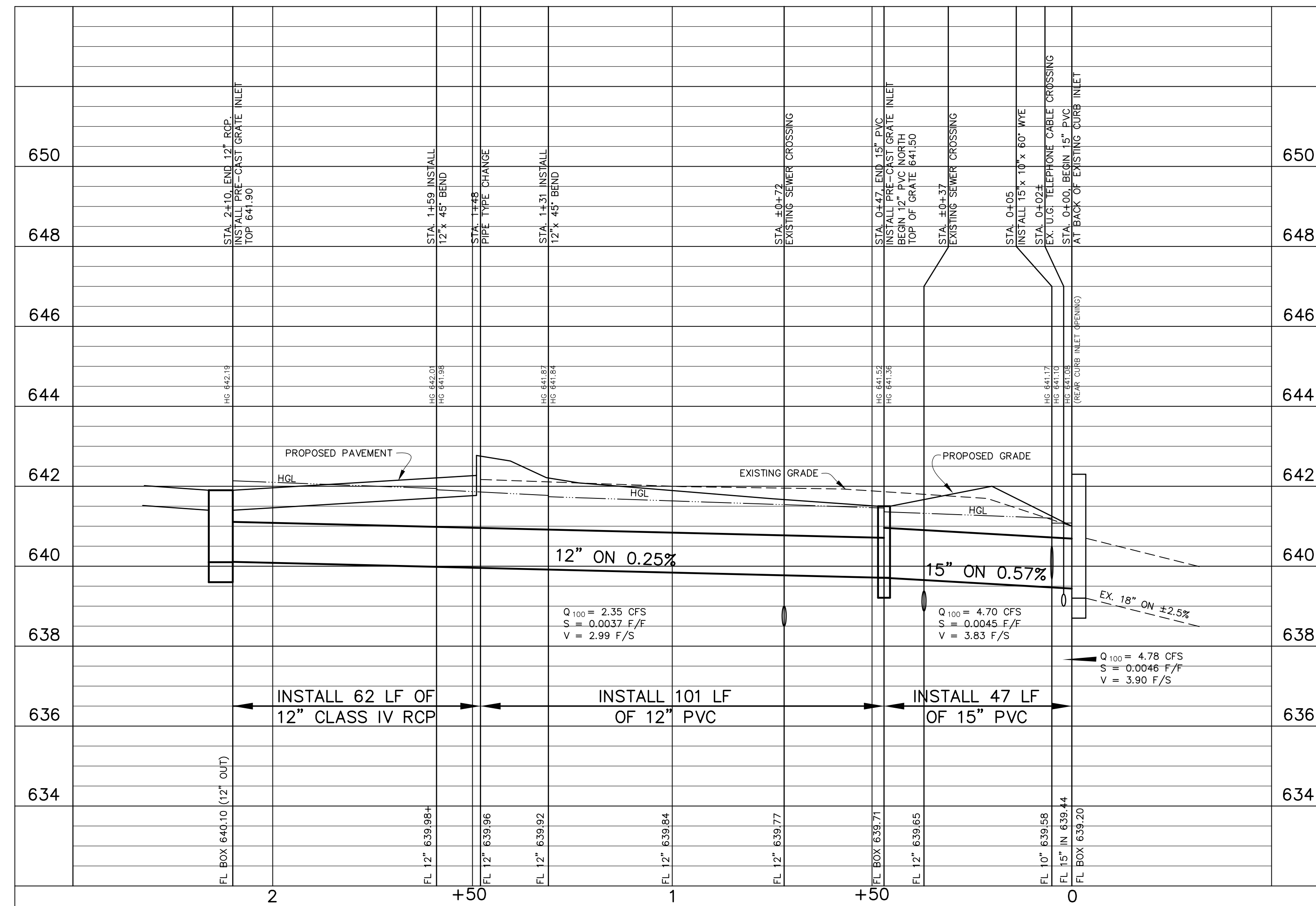
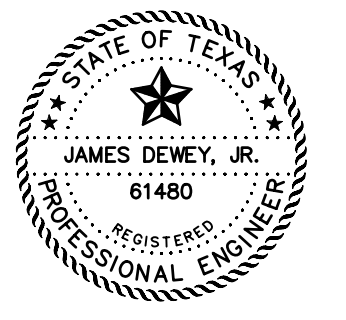


NOTE: THERE IS A POTENTIAL FOR A SURCHARGE IN THE STORMDRAIN SYSTEM DURING CERTAIN STORM EVENTS. THE SWALE TO THE EAST OF THE BUILDING AS SHOWN ON SHEET C38 MUST BE CONSTRUCTED AND MAINTAINED TO THE GRADES INDICATED ON THE PLAN, TO ENSURE EMERGENCY OVERFLOW PROTECTION FOR THE BUILDING. THE PARKING LOT TO THE NORTHWEST OF THE BUILDING AND THE SIDEWALK ON THE TAXIWAY AREA ALSO WILL SERVE AS EMERGENCY OVERFLOW POINTS SHOULD THE STORMDRAIN SYSTEM IN ADDISON ROAD BECOME INOPERATIVE.



REVISIONS:	
1/07/09	PER CITY REVIEW
1/07/09	PER CITY REVIEW
8/11/09	REV FOR CLIENT
9/11/09	PER CITY REVIEW
12/8/09	FIELD ADJUSTMENT
5/18/10	AS BUILT



"AS-BUILT"

THIS AS-BUILT DRAWING IS BASED ON INFORMATION OBTAINED FROM BUILDING CONTRACTORS DURING CONSTRUCTION AS PROVIDED TO JDJR ENGINEERS & CONSULTANTS, INC.

JDJR ENGINEERS & CONSULTANTS, INC. DOES NOT GUARANTEE THE ACCURACY OR COMPLETENESS OF THESE RECORDS.

SHEET TITLE:
STORM DRAIN PROFILE AND DETAILS
 PAVING AND DRAINAGE IMPROVEMENTS
 15841 ADDISON ROAD
 ADDISON AIRPORT
 ADDISON, TEXAS

PREPARED BY:
JDJR ENGINEERS AND CONSULTANTS
 TSBP REGISTRATION NUMBER F-8527

ENGINEERS • SURVEYORS • LAND PLANNERS
 2500 Texas Drive Suite 100 Irving, Texas 75062
 Tel 972-252-5357 Fax 972-252-8958

DATE: DEC. 2, 2008
 SCALE: 1"=20'H, 1"=2'V

DRAWN BY: SAS
 CHECKED BY: JDJR

SHEET NO.
05 OF **7**