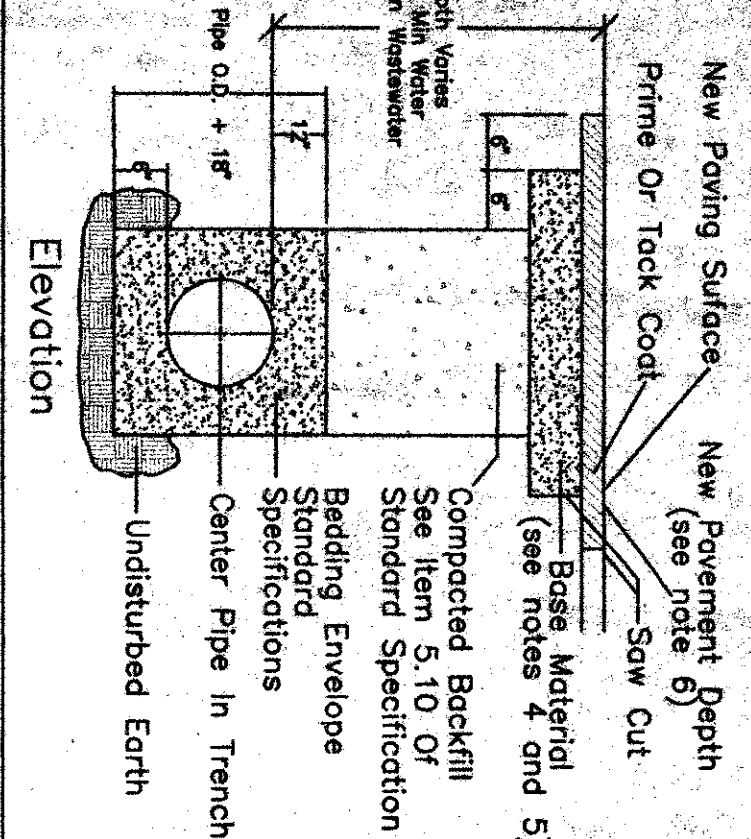


Typical Trench With Paved Surface

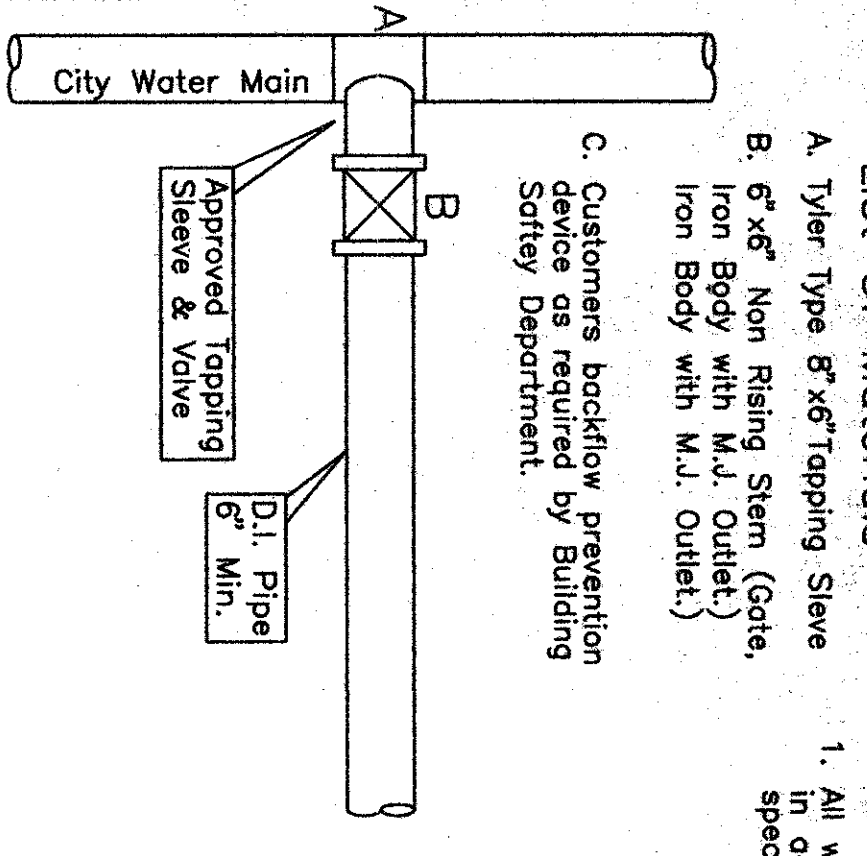


- Notes:
- The existing paving surface shall be saw cut in a straight line, a minimum of 12" wider than the undisturbed sides of the trench, symmetrical about the center line of the excavation.
 - Any concrete paving shall be saw cut 6" wider than undisturbed sides of excavation.
 - If excavation area is open for temporary public use, the surface shall be maintained level with adjacent riding surface with cold mix or temporary hot mix.
 - Road base and surface materials in the trench cut shall be replaced in kind or equal thickness or with minimum base thickness of 10 inches, whichever is greater.
 - All damaged areas of pavement outside the trench cut shall be removed and replaced with a minimum of 8 inches of base or match existing, whichever is greater.
 - Surface pavement shall be of the kind and thickness as existing, or minimum 2", whichever is greater.

City of Addison Utility - Special Construction Notes

- The city standard construction specifications current at the time of bidding shall govern material and methods used to do this work.
- At least 48 hours before beginning any water and wastewater construction in public R.O.W. or public easement, the contractor shall notify Transportation and Public Services Inspection Division for final line construction, or water and wastewater utility tops inspection for tops only construction.
- The contractor shall contact the Austin area one call system at 472-2822 for construction utility tops inspection. The contractor shall verify in locations of all utilities to be extended, tied to, or altered, or subject to damage/inconvenience by the construction operators. The City of Addison Water and Wastewater Maintenance responsibility ends at R.O.W. easement lines.
- No other utility service/appliances shall be placed near the property line, or other assigned location designated for water and wastewater utility service, that would interfere with the water and wastewater specification.
- Pressure taps shall be in accordance with city standard specification, and shall do all valves.
- That restrip shall be in accordance with city standard specification and NFA 24 underground fire code.
- Water line testing and sterilization shall be performed in accordance with city standard specification.

Fire Line Installation



- List Of Materials
- All work in street R.O.W. shall be in accordance with City Standard Specifications.

Physical characteristics of the block are determined from the following formulas:

$$V_g = \frac{PA \sin \theta}{W_m} \text{--- (neglecting } W_p)$$

$$V_g = \frac{1}{2} W_p \text{--- (including } W_p)$$

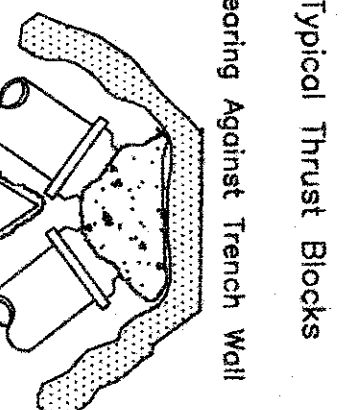
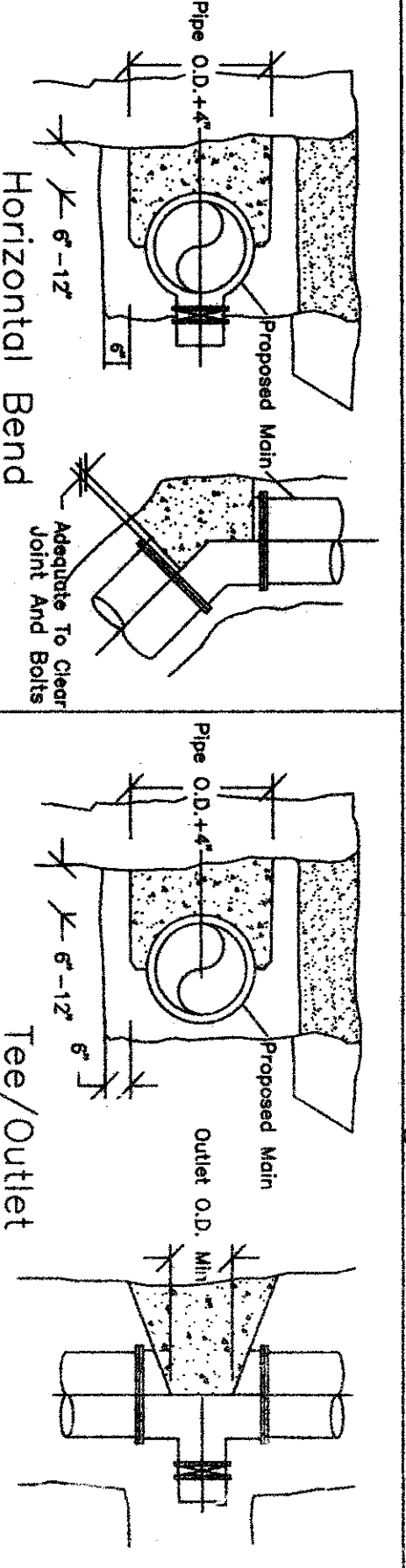
Where:

- V_g = Volume of thrust block (ft³)
- P = Design pressure (psi)
- A = Cross sectional area of pipe (in²) $\frac{\pi}{4} D^2$
- W_m = Density of thrust block material (lb/ft³)
- W_p = Resultant thrust force (lb/ft)
- L = Minimum required restrained pipe length (ft)

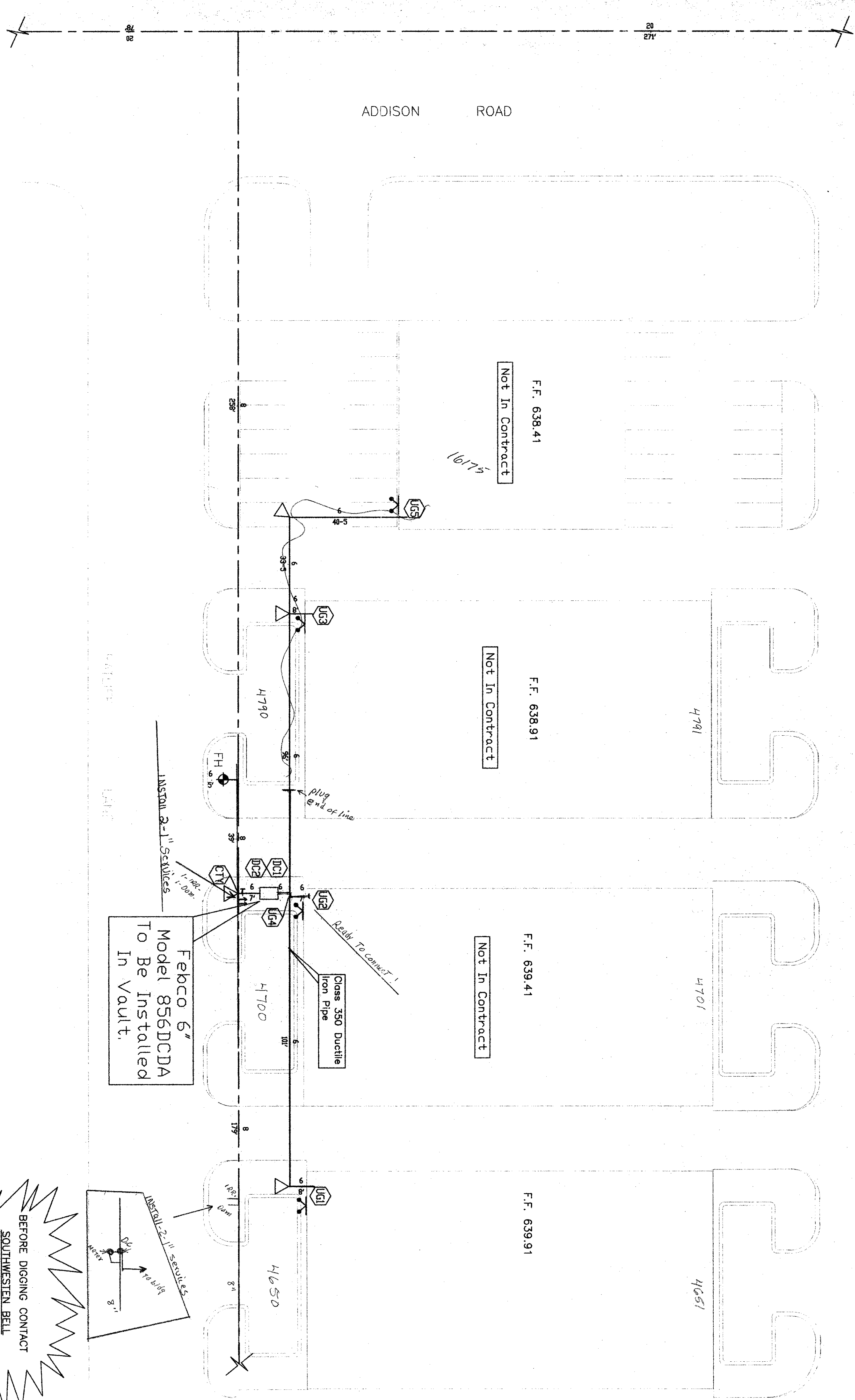
Earth cover (We) is neglected when determining (Vg) unless otherwise specified. The horizontal distance from the vertical face of the block (Fp) or by joint restraint. Allowable soil bearing pressure determines the minimum size of the block base.

B14-16

Concrete Thrust Blocking



ADDISON ROAD

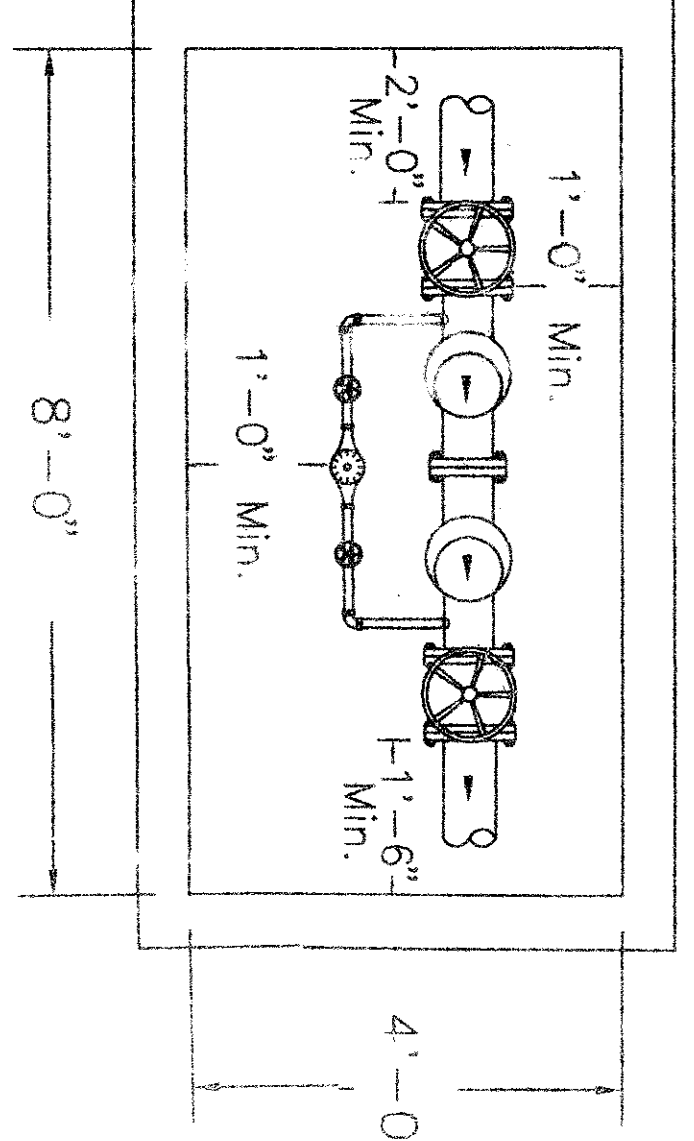
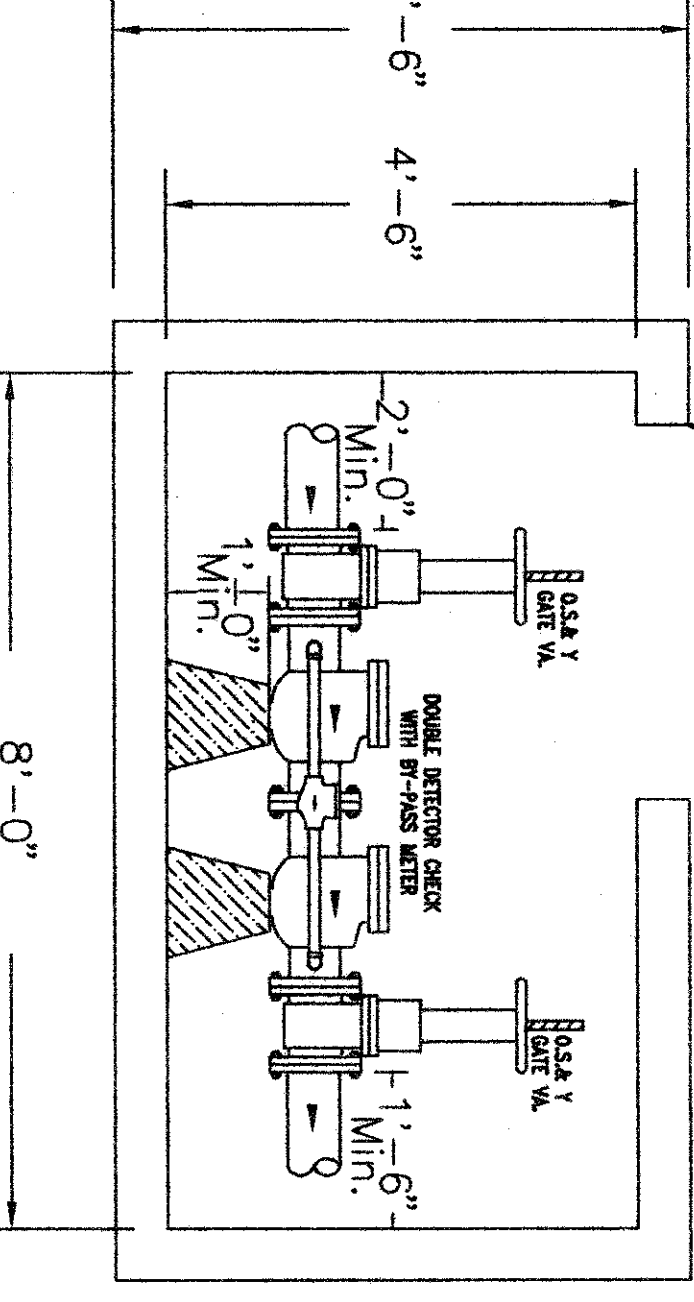


Febco 6" Model 856DCDA To Be Installed In Vault.

Class 350 Ductile Iron Pipe

INSTALL 2-1/2" SLOTTED

BEFORE DIGGING CONTACT
SOUTHWESTERN BELL
#1-800-395-0440
DALLAS WATER UTILITIES
#311



- Vault Door To Be Bilco Model K-5 Aluminum 42" x 42"
- Febco 6" Model 856 Double Detector Check With A Hersey ERT Register With Pit-Pak To Be Installed In Vault Per City Of Addison
- Vault Is Required To Have a Concrete Floor Per City Of Addison
- City Tapping Sleeve Is To Be The Tyler Style.
- The Detector Meter Piping Shall Have An In-Line Or Angle Curb-Stop Or An Approved Ball Valve Before The Meter Assembly After The Meter. And A Test Port After The Assembly.

- Manline Piping Shall Include A Mechanical-Joint Flange Adapter On The Inlet End Of The Assembly To Facilitate Future Removal Or Replacement Of The Assembly.

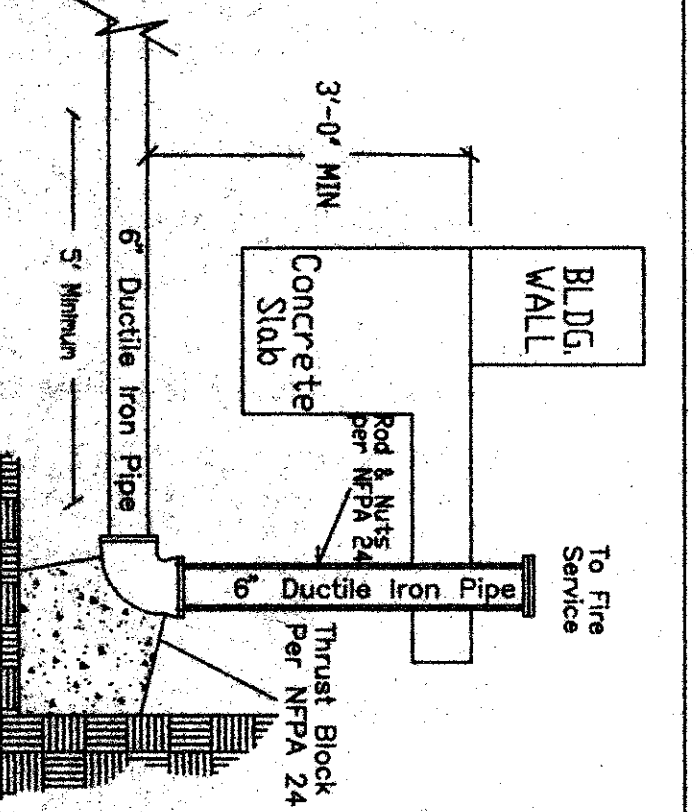
Legend

- Fire Hydrant
- Water Mains
- Water Meter
- Thrust Block
- Free Standing Fire Department Connection

Notes

- All 6" fire service mains to be Ductile Iron Class 350.
- All 6" underground piping and vault to be installed by US Fire Protection
- All Underground Piping To Conform To NFPA 24 And City of Addison Fire And Building Codes.

UNDERGROUND DETAIL



FLOW TEST INFORMATION

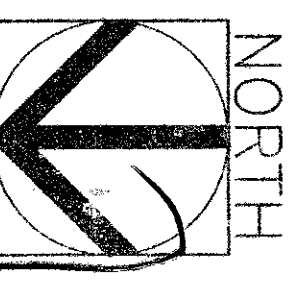
Flow Test Was Taken One Block South Of Raliff Lane.

STATIC: 52.0 psi RESIDUAL: 46.0 psi

Flow Test Was Taken One Block South Of Raliff Lane.

REVISIONS

NO.	DATE	DESCRIPTION
1	11-23-98	ISSUED VOLT DETAILS FOR UNDERGROUND INSTALLATION.
2		JASON WINNS 11-23-98



SCALE: 1" = 20'

U. S. FIRE PROTECTION

Delta Warehouse

972-225-3434

DELTA 16175 ADDISON RD.