

NOTE:
CONSTRUCT
BARRIER FREE RAMP(BFR)
AT ALL PROP. DRIVES

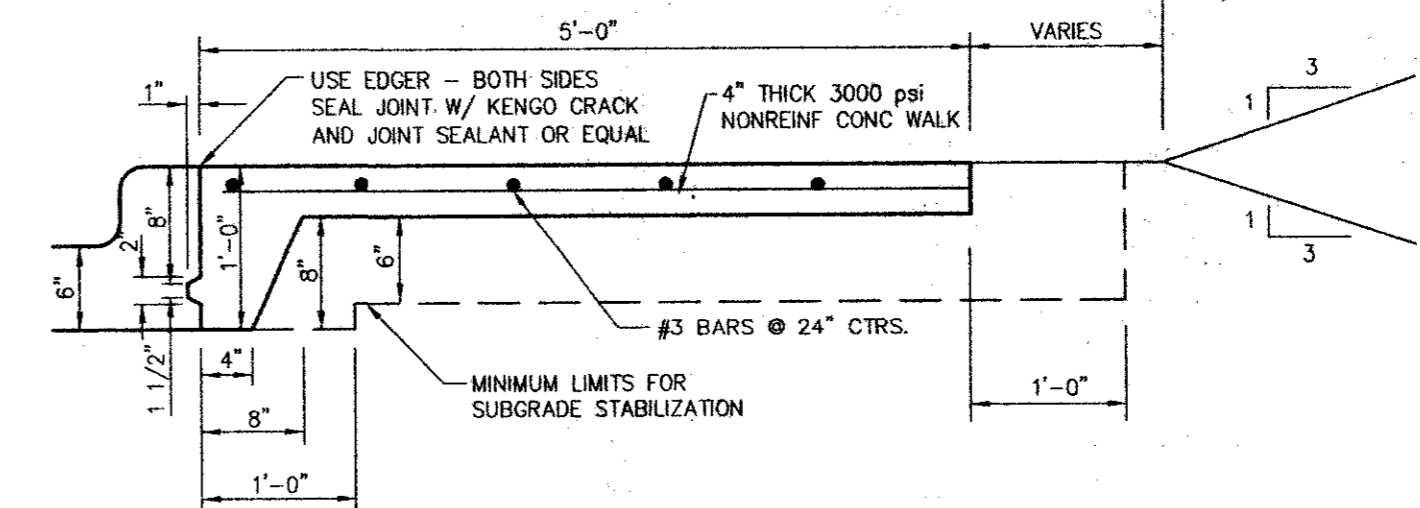
SAWCUT & REMOVE
EX. CONC. CURB &
GUTTER.

SAWCUT & CONST.
CONC. CURB & GUTTER
PER TOWN OF ADDISON
SPEC.

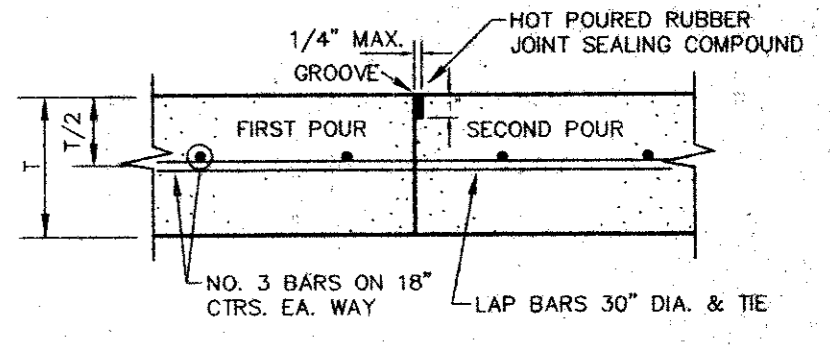
General Notes

- All materials and construction shall conform to the Town of Addison's standards and specifications.
- It will be the responsibility of the contractor to protect all public utilities in the construction of this project. All manholes, clean-outs, valve boxes, fire hydrants, etc. must be adjusted to proper line and grade by the Contractor prior to and after the placing of permanent paving. Utilities must be maintained to proper line and grade during construction of this project.
- The Contractor will be responsible for coordinating with all the appropriate utility companies for the location of all utilities within the construction area.
- The Paving Contractor shall coordinate with the Utility Contractor to insure all sleeving for irrigation has been installed prior to placement of permanent pavement.
- All paving and earthwork operations shall conform to the recommendations in the Geotechnical Investigation Report. (TERRACON REPORT NO. 17975379 DATED 9/9/97)
- All dimensions are to face of curb unless otherwise noted.
- All curb return radii are 1.5' unless otherwise noted.
- All construction debris shall be legally disposed of offsite.

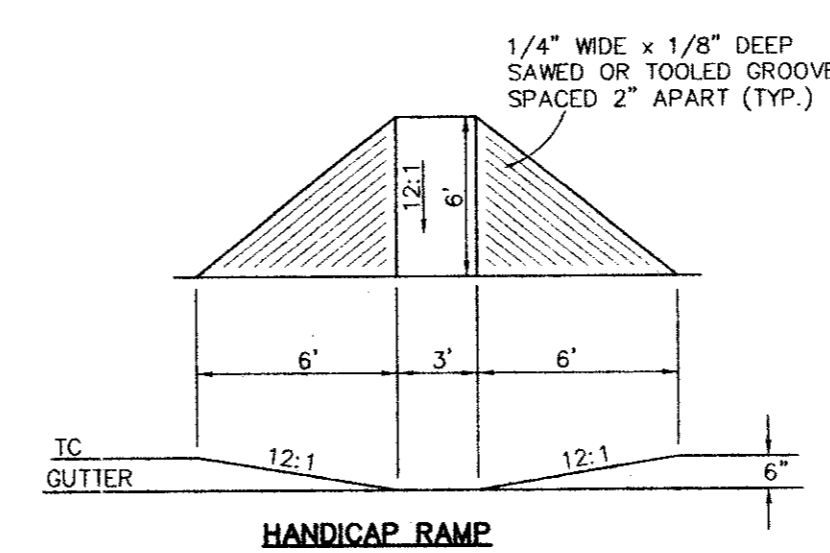
REFER TO ARCH.
FOR DUMPSTER PAD
DETAIL



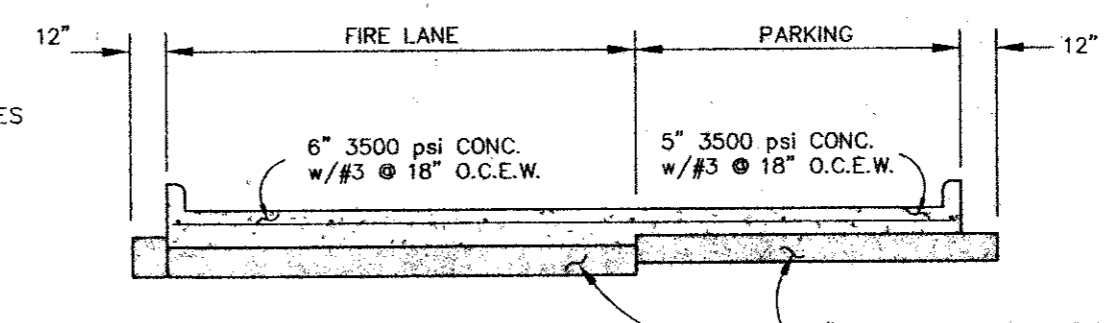
SIDEWALK AGAINST PROPOSED CONCRETE CURB
N.T.S.



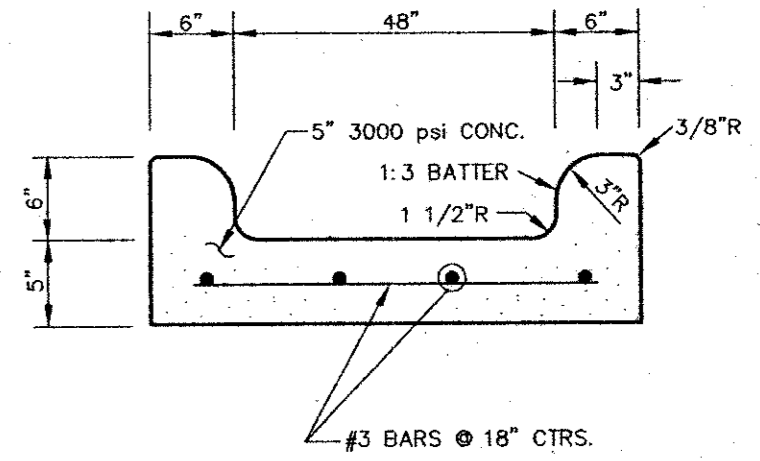
CONSTRUCTION JOINT
N.T.S.



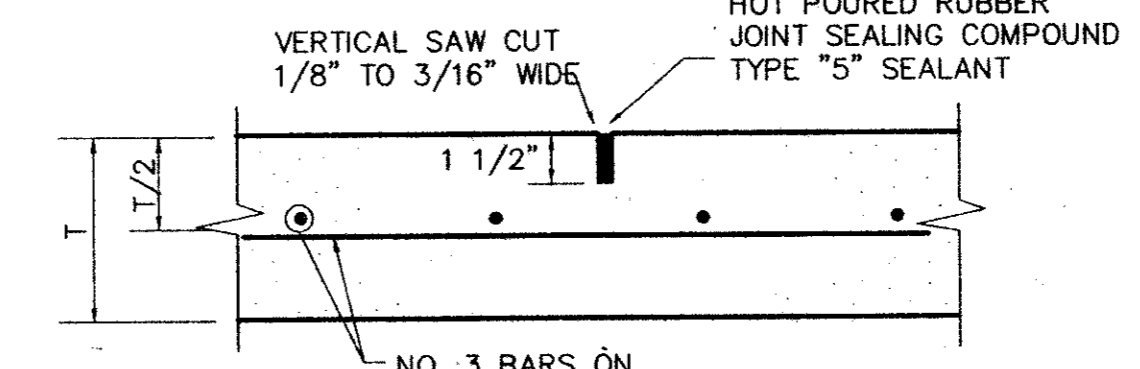
HANDICAP RAMP
N.T.S.



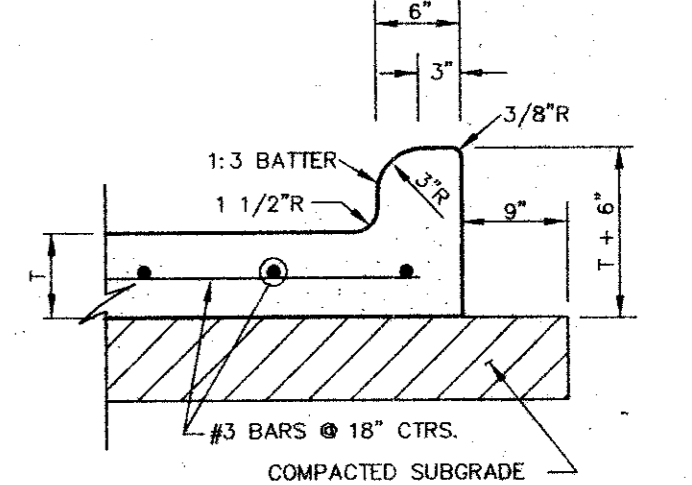
TYPICAL PAVING SECTION
N.T.S.



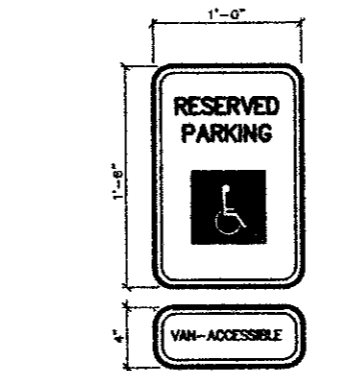
CURB OPENING/FLUME
N.T.S.



SAWED DUMMY (CONTROL) JOINT
N.T.S.



TYPICAL PAVEMENT SECTION
N.T.S.

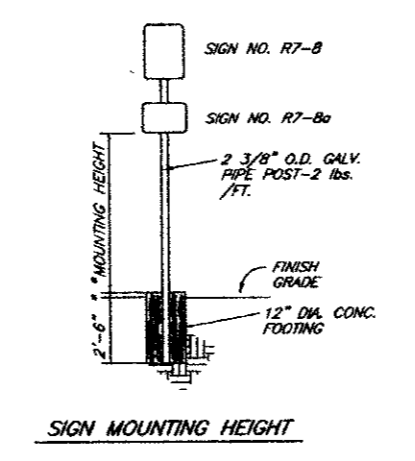


LETTERS AND SYMBOLS - GREEN
SIGN BACKGROUND - WHITE

NOTES:
1. SPACING BETWEEN LETTERS, COLORS, AND PROPORTIONS SHALL CONFORM TO STANDARD SPECIFICATIONS FOR TEXAS.
2. INSTALL WHERE INDICATED ON PLANS.
3. VAN-ACCESSIBLE SIGNAGE ON VAN SPACES ONLY.

TYPICAL SIGNAGE DETAIL
N.T.S.

BENT TREE VALLEY
VOLUME 81191, PAGE 1913

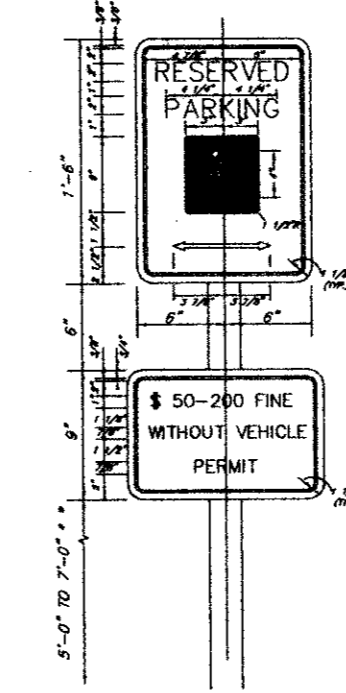


NOTE:
ALL SIGN HARDWARE TO BE GALVANIZED

COLORS
SIGN FACE - GREEN
SIGN LETTERS - WHITE
SIGN BACKGROUND - WHITE
SIGN MOUNTING POST - WHITE
SIGN MOUNTING BRACKET - WHITE

* USE SINGLE AND/OR DOUBLE BEADED ARROWS. MAY BE USED ON SIGNS TO MARK INTERSECTIONS.
RESERVED PARKING SPACES: ARROW SHOULD BE ORIENTED INCH SIGN IS TO BE USED TO MARK A SINGLE SPACE. FURNISH AND INSTALL SIGNS PER SIGN LOCKS AS DIRECTED.

* SIGN MOUNTING HEIGHT - LOCATED IN GREEN OR YELLOW AREAS.
* - LOCATED IN PAVED AREAS.

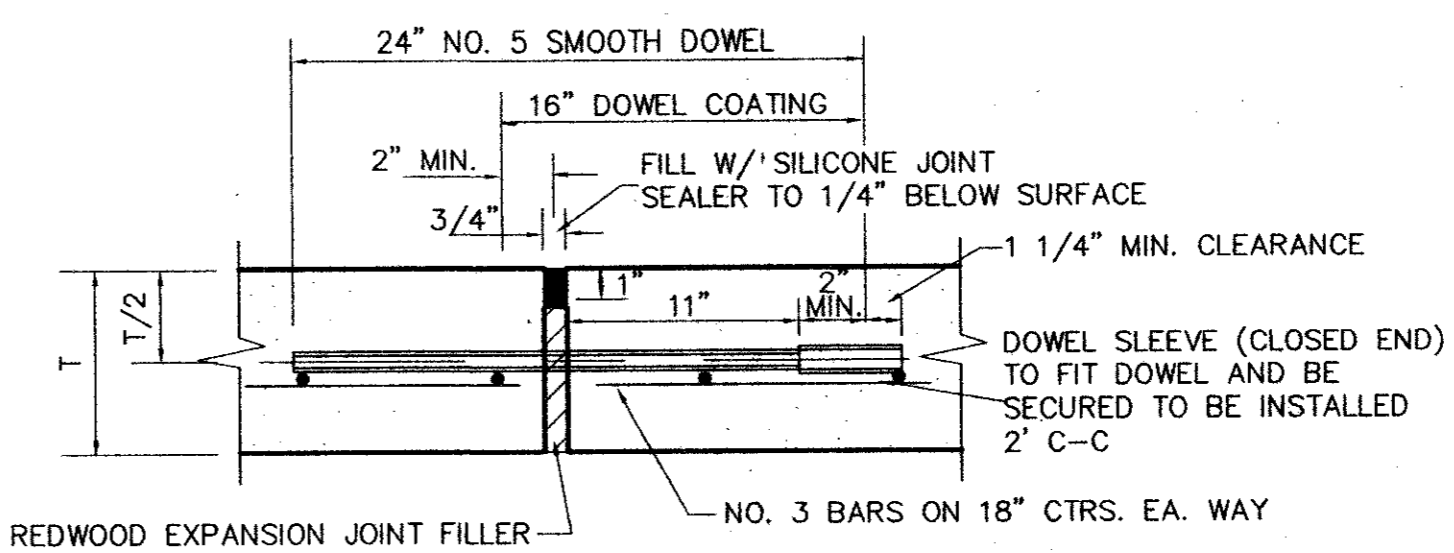


NOTE:
ALL SIGN HARDWARE TO BE GALVANIZED

COLORS
SIGN FACE - GREEN
SIGN LETTERS - WHITE
SIGN BACKGROUND - WHITE
SIGN MOUNTING POST - WHITE
SIGN MOUNTING BRACKET - WHITE

* USE SINGLE AND/OR DOUBLE BEADED ARROWS. MAY BE USED ON SIGNS TO MARK INTERSECTIONS.
RESERVED PARKING SPACES: ARROW SHOULD BE ORIENTED INCH SIGN IS TO BE USED TO MARK A SINGLE SPACE. FURNISH AND INSTALL SIGNS PER SIGN LOCKS AS DIRECTED.

* SIGN MOUNTING HEIGHT - LOCATED IN GREEN OR YELLOW AREAS.
* - LOCATED IN PAVED AREAS.

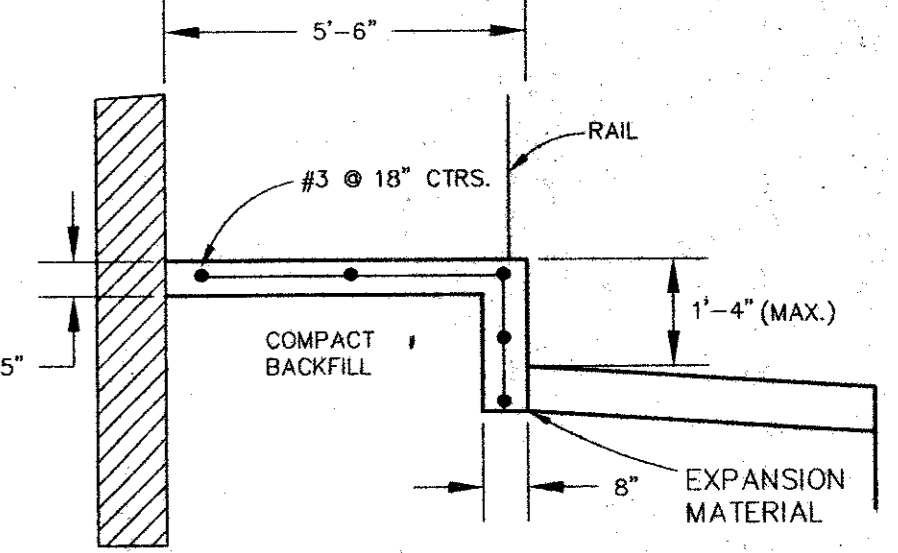


LONGITUDINAL BUTT JOINT
N.T.S.



EXPANSION JOINT
N.T.S.

- LEGEND**
- BFR - Barrier Free Ramp
 - Existing Curb
 - Proposed Curb
 - Proposed 5" Pavement
5" 3500 psi
Concrete Reinforced w/ #3 Bars
@ 18" O.C.E.W.
(Parking Areas)
 - Proposed 6" Pavement
6" 3500 psi
Concrete Reinforced w/ #3 Bars
@ 18" O.C.E.W.
(Fire Lane & Drive Approaches)



HANDICAP RAMP
SECTION A-A
N.T.S.

PAVING PLAN
16200 ADDISON ROAD OFFICE BLDG.
TOWN OF ADDISON
DALLAS COUNTY, TEXAS

BROCKETTE • DAVIS • DRAKE, inc.
consulting engineers
Civil & Structural Engineering • Surveying
4144 North Central Expressway, Suite 1100 Dallas, Texas 75204
(214) 824-3647, fax (214) 824-7064

DESIGN	DRAWN	DATE	SCALE	NOTES	FILE	NO.
JAR	CRN	11/97	1"=30'	BDD	C97318	C-4

AS-BUILT

NOTE:
THESE PLANS HAVE BEEN REVISED
TO CONFORM WITH CONSTRUCTION
RECORDS PROVIDED BY CONTRACTOR.

JAMES A. RILEY
73231
11/6/98