

CATCH BASIN (STD 3' DIA MANHOLE W/NEENAH R-2586-N  
FRAME & GRATE (TYPE G))  
LINE C STA 4+60  
T/G=634.00 E=624.76

EDGE OF PVM'T ELEV=634.88

PI 30' BEND  
LINE C STA 1+85

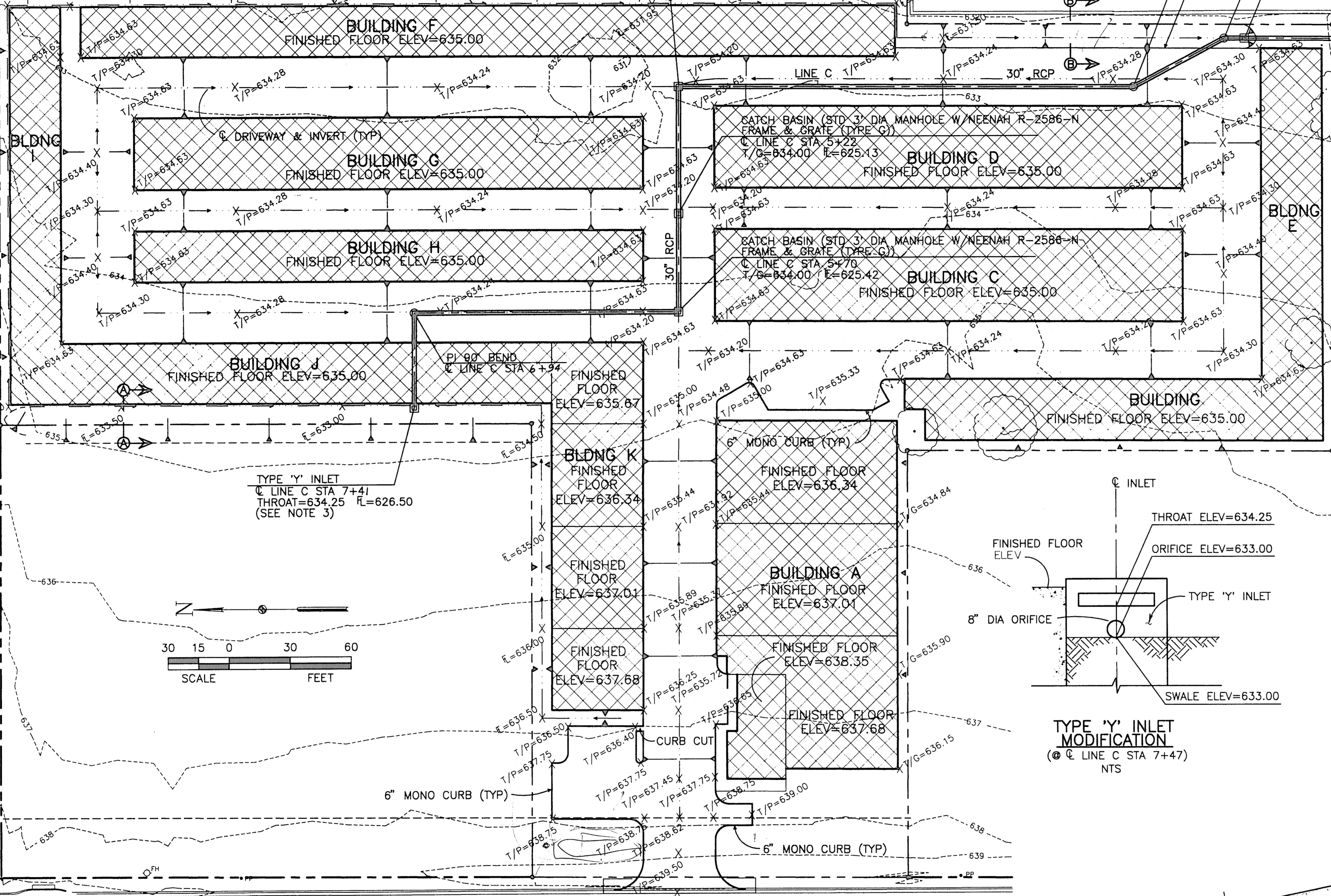
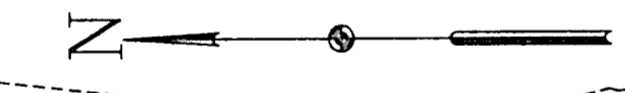
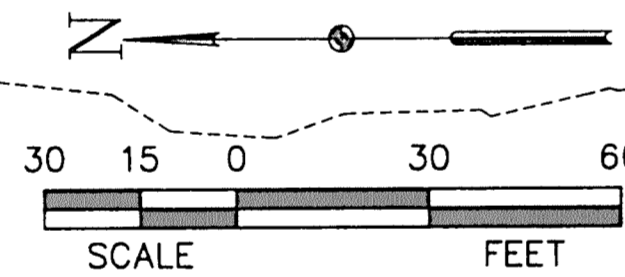
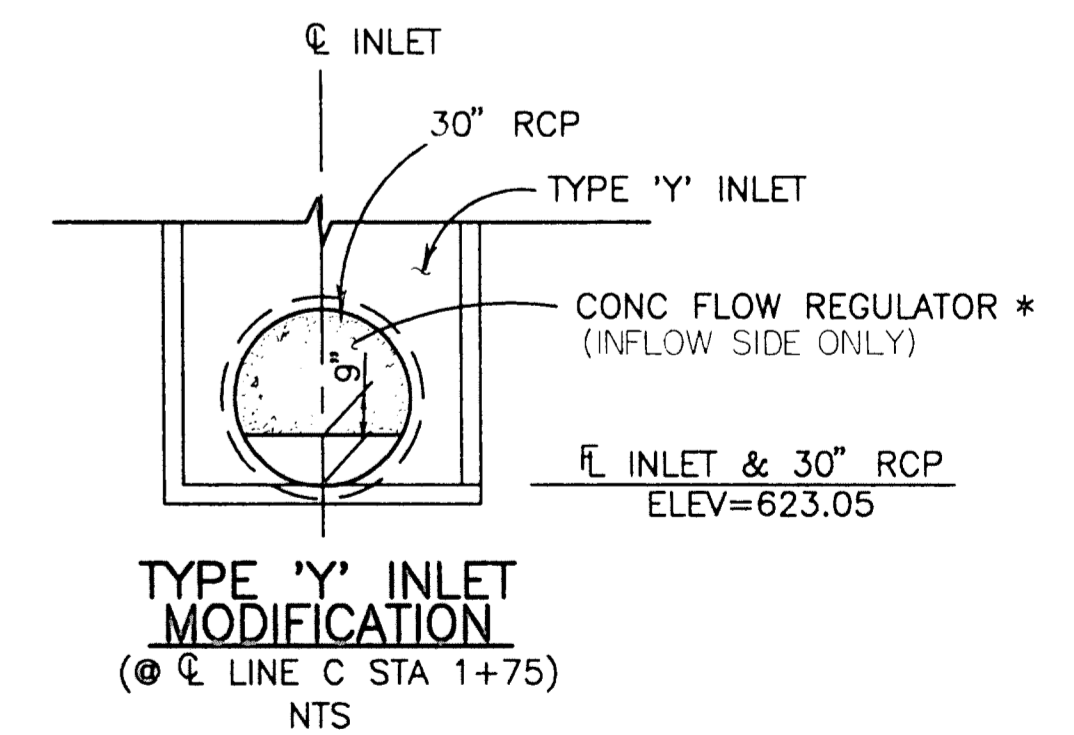
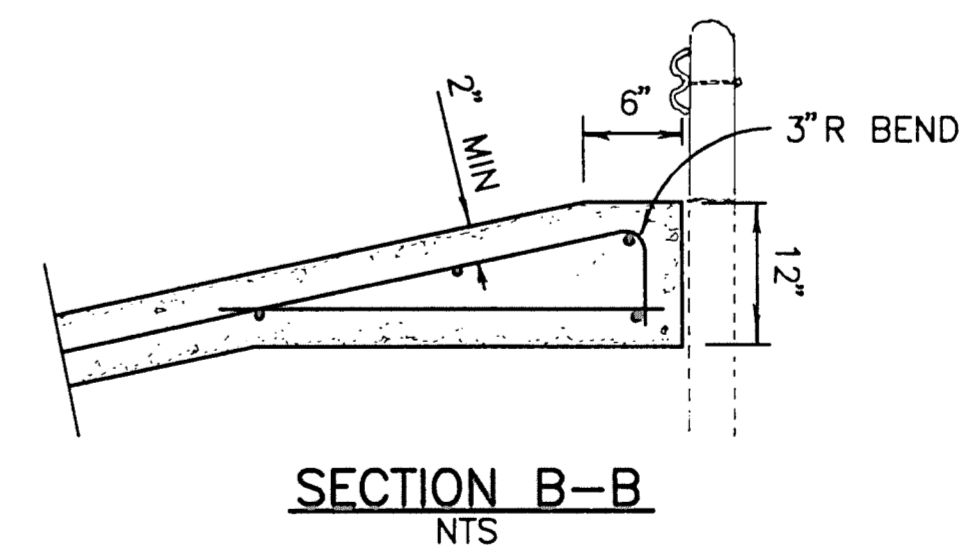
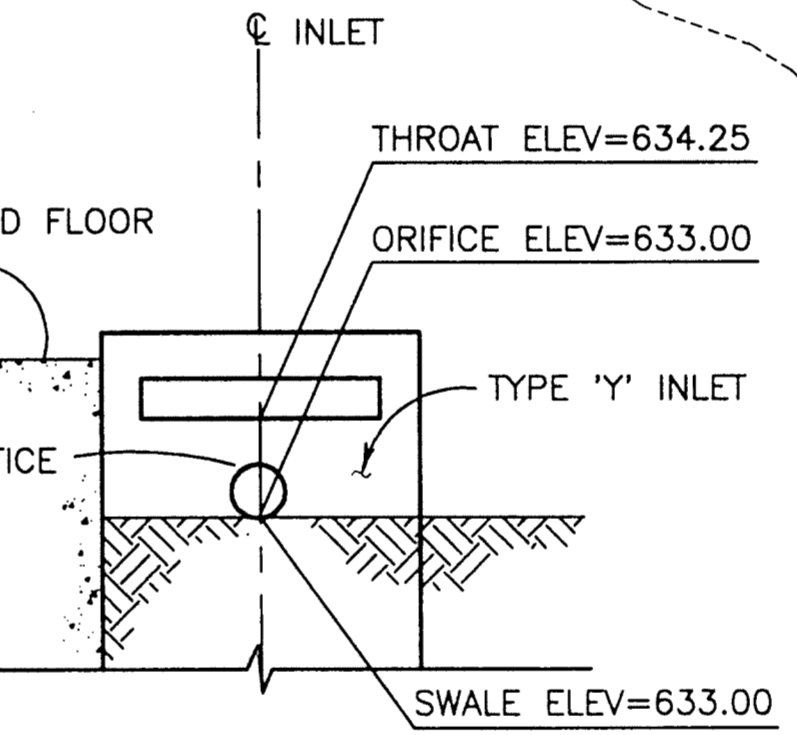
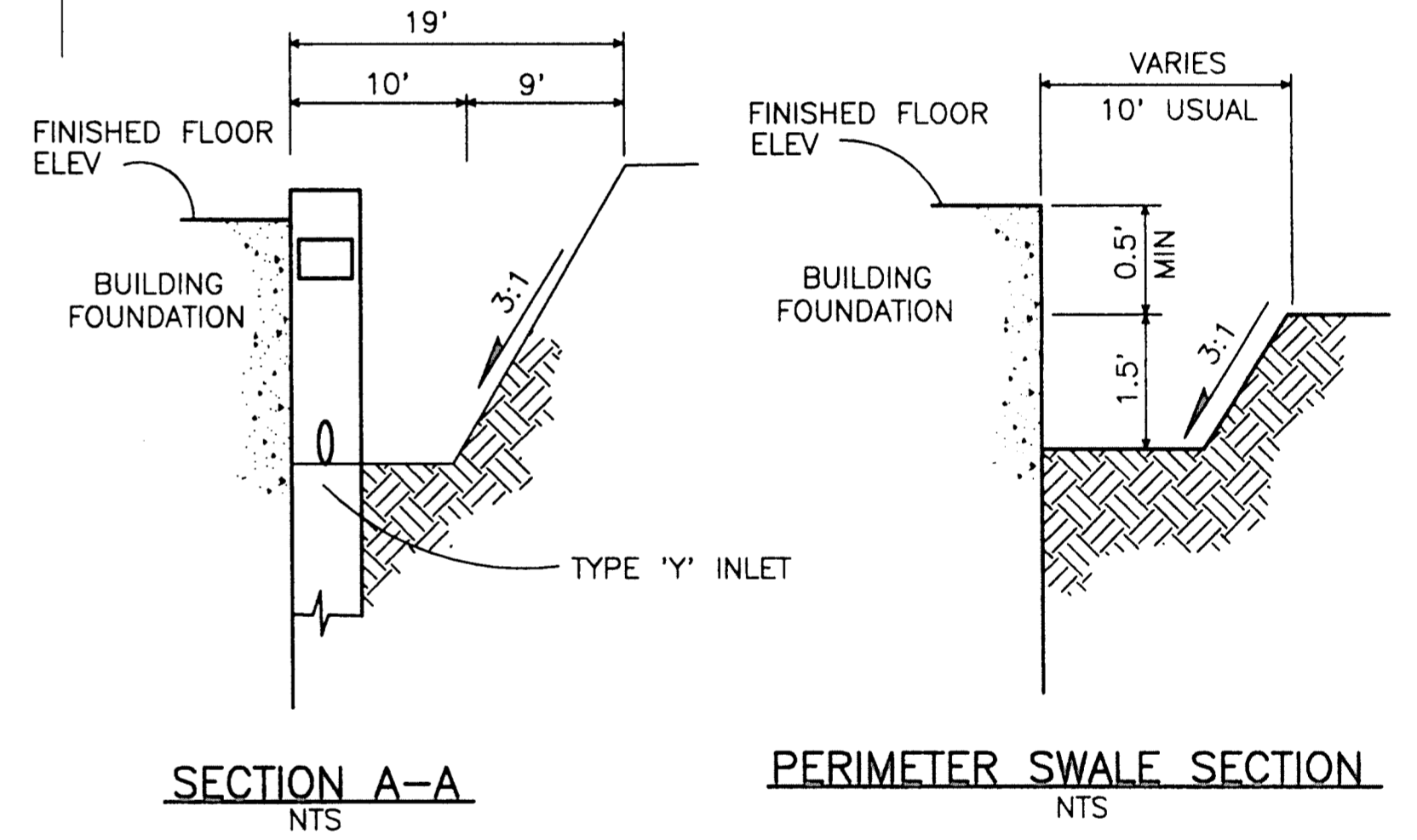
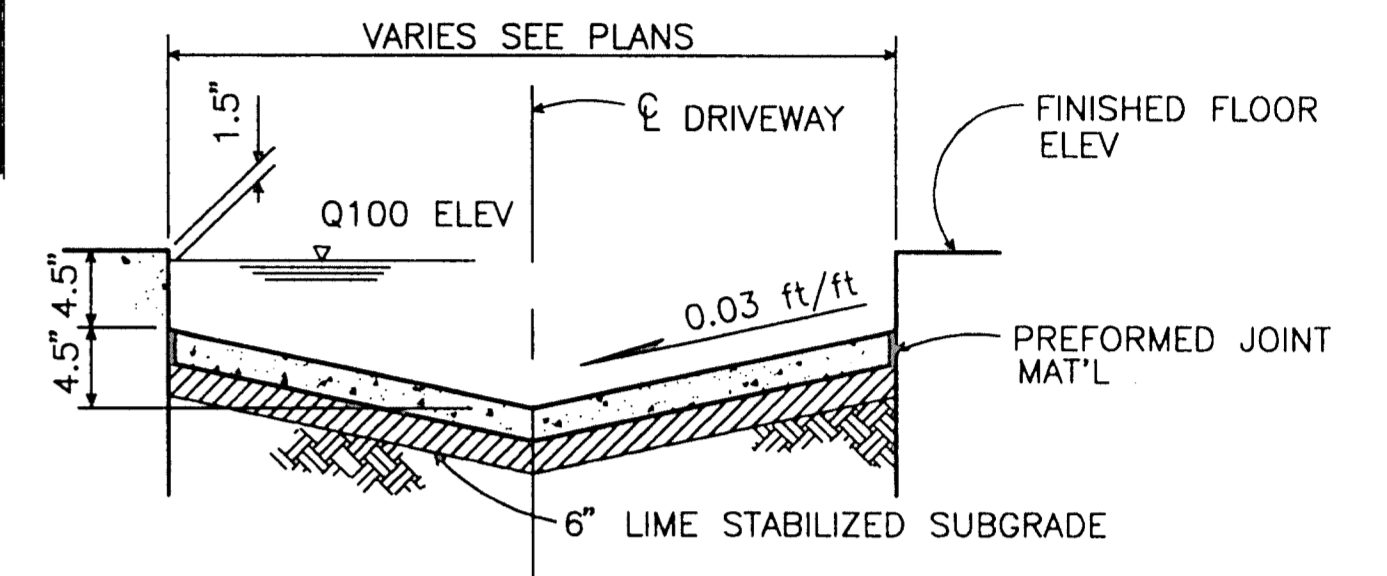
PI 30' BEND  
LINE C STA 0+10

PI 30' BEND  
ACCESS MANHOLE  
(4' DIA MANHOLE W/FRAME & COVER)  
LINE C STA 2+35

TYPE 'Y' INLET  
LINE C STA 1+75  
THROAT=630.30  
(SEE NOTE 5)

SAWCUT & REPAIR PVM'T  
30" RCP  
SEE NOTE 4

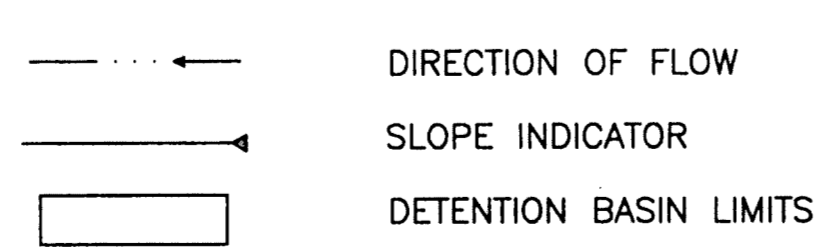
SEE NOTE 1



ADDISON ROAD

BENCHMARK:  
BRASS CAP @ CURB INLET ON WEST SIDE OF ADDISON RD  
250'+/- SOUTH OF MOST WESTERLY SOUTHWEST PROPERTY  
CORNER. ELEV=638.65

LEGEND



- NOTES:
- EXACT HORIZONTAL & VERTICAL LOCATION OF 60" RCP TRUNK IS UNKNOWN. CONTRACTOR SHALL LOCATE EXIST TRUNK & INSTALL LINE C AS SHOWN ON PLAN. MATCH INTO EXIST 60" RCP TRUNK TO PROVIDE A 0.22% MIN GRADE ALONG LINE C.
  - ALL STORM DRAIN PIPE AND INLETS WILL BE CONSTRUCTED ACCORDING TO THE REQUIREMENTS OF THE STANDARD CONSTRUCTION DETAILS, FILE 251D-1 (CITY OF DALLAS STANDARD DETAILS).
  - MODIFY TYPE 'Y' INLET WALLS TO PROVIDE THREE (3) 8" DIA ORIFICES (1 EA EXPOSED WALL) TO ACCOMMODATE POSITIVE DRAINAGE OF DETENTION BASIN. E OF 8" ORIFICES WILL BE ELEV 633.00 & LOCATED AT THE C OF EACH WALL.
  - IF FIELD VERIFICATION INDICATES A CONFLICT BETWEEN STORM SEWER AND WATER LINE, WATER MAIN SHALL BE LOWERED PER CITY OF ADDISON SPECIFICATIONS.
  - INSTALL CONCRETE FLOW REGULATOR @ INFLOW SIDE (ONLY) OF INLET. (SEE DETAIL THIS SHEET)

\* EXTEND INLET REINFORCING THROUGH 30" RCP CONDUIT TO PROVIDE REINFORCING FOR CONCRETE FLOW REGULATOR

DRAINAGE AREA MAP  
1" = 200'

DRAINAGE AREA CALCULATIONS

	AREA (AC)	C	I <sub>100</sub> (IN/HR)	Q <sub>100</sub> (CFS)	RQ'D DETENTION BASIN STORAGE
EXISTING	5.47	0.4	8.80	19.26	-
DEVELOPED	5.47	0.9	8.80	43.33	30400 CF

AVAILABLE DETENTION BASIN STORAGE

ONSITE (SURFACE)	24155 CF
ONSITE (SUBSURFACE)	6025 CF
OFFSITE (SWALE)	2810 CF
<b>TOTAL</b>	<b>32990 CF</b>

GRADING & DRAINAGE PLAN

ADDISON ROAD SELF STORAGE  
ADDISON ROAD, ADDISON TEXAS

ADDISON ROAD SELF STORAGE LIMITED PARTNERSHIP

NEEDHAM WRIGHT LASKEY ENGINEERS INC.  
10290 MONROE DRIVE  
SUITE 305  
DALLAS, TEXAS 75229  
PH. 214 357 2981  
SHEET NO.

DRAWN	DESIGN	DATE	SCALE	NOTES	FILE	SHEET
CSC	CSC	5/04/94 5-3-97	1' = 30'			C-2