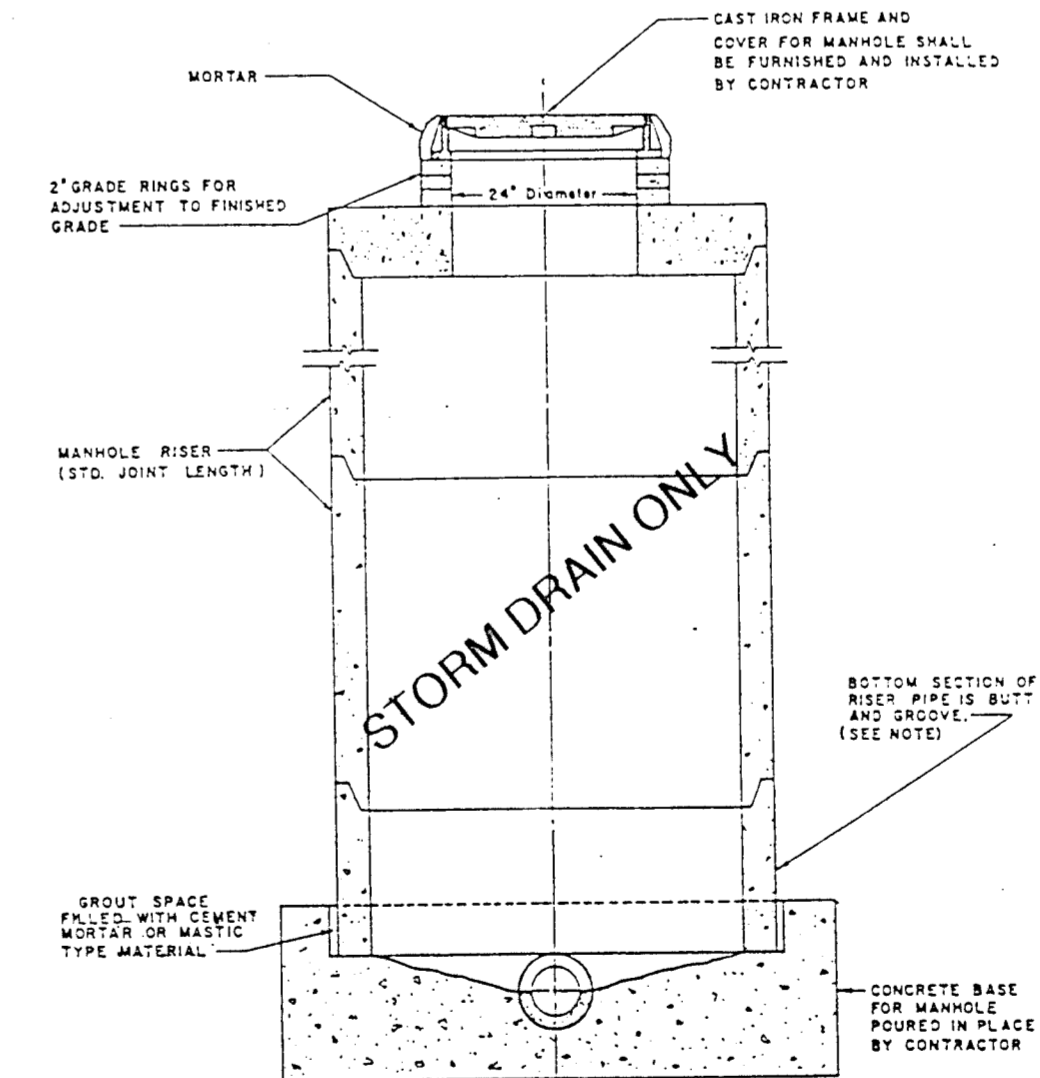
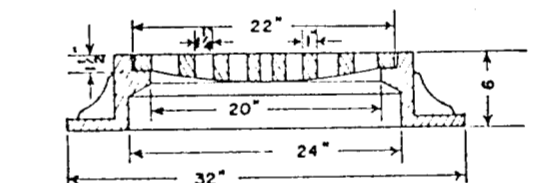


- LEGEND**
- WATER LINE
 - - - SANITARY SEWER LINE
 - ⊙ DETECTOR CHECK VAULT
 - ⊙ WATER METER BOX

R-2535 Catch Basin Frame, Grate

Heavy Duty
Total Weight 230 Pounds



PRECAST CONCRETE MANHOLE
FLAT TOP
TONGUE & GROOVE JOINTS
ASTM C478

NOTE: MANHOLE RISER PIPE FURNISHED IN LENGTHS OF ONE (1), TWO (2), THREE (3), FOUR (4), OR SIX (6) FEET.

- NOTES:**
1. FIRE LINE SERVICE TO INCLUDE 6 IN DETECTOR CHECK DEVICE W/ BYPASS METER, PRECAST D.C. VAULT W/ ACCESS HATCH AND ALL RELATED APPURTENANCES.
 2. FIRE HYDRANT ASSEMBLY TO INCLUDE 6 IN GATE VALVE, CONC FOR THRUST BLOCK FIRE HYDRANT AND ALL RELATED APPURTENANCES.
 3. THE LOCATION TO UTILITIES INDICATED ON THE PLANS ARE TAKEN FROM EXISTING PUBLIC RECORDS. THE EXACT LOCATION AND ELEVATION OF ALL UTILITIES MUST BE DETERMINED BY THE CONTRACTOR TO ASCERTAIN WHETHER ANY ADDITIONAL FACILITIES OTHER THAN THOSE SHOWN ON THE PLANS MAY BE PRESENT.
 4. ALL MATERIALS TO BE USED IN THE CONSTRUCTION OF THE WATER LINE & SANITARY SEWER MAINS SHALL BE IN ACCORDANCE WITH CITY OF ADDISON STANDARD SPECIFICATIONS.
 5. ALL UTILITY WORK SHALL COMPLY WITH CITY OF ADDISON STANDARD SPECIFICATIONS.
 6. COORDINATE ALL WORK WITH CITY DEPARTMENTS.
 7. NOTIFY ALL UTILITY COMPANIES OF THE INTENT TO EXCAVATE PRIOR TO STARTING WORK.
 8. ALL TRENCH EXCAVATIONS SHALL FOLLOW ALL OSHA, STATE OF TEXAS AND CITY OF ADDISON GUIDELINES.
 9. BACKFILL ALL TRENCHES IN LIFTS AT SPECIFIED DENSITY.

CAUTION!!! - UNDERGROUND TELEPHONE CABLE. CONTACT S.W.B.T. 48 HOURS PRIOR TO EXCAVATION OR BORING. ENTERPRISE 9800 OPERATOR.

BENCHMARK:
BRASS CAP @ CURB INLET ON WEST SIDE OF ADDISON RD 250'+/- SOUTH OF MOST WESTERLY SOUTHWEST PROPERTY CORNER. ELEV=638.65

Robert J. Needham
5-4-94

NEEDHAM WRIGHT LASKEY ENGINEERS INC.
10290 MONROE DRIVE
SUITE 305
DALLAS, TEXAS, 75229
PH. 214 357 2981

UTILITY PLAN						
ADDISON ROAD SELF STORAGE						
ADDISON ROAD, ADDISON TEXAS						
ADDISON ROAD SELF STORAGE LIMITED PARTNERSHIP						
DRAWN	DESIGN	DATE	SCALE	FILE	NOTES	SHEET
CSC	CSC	5/04/94	1" = 30'			C-3