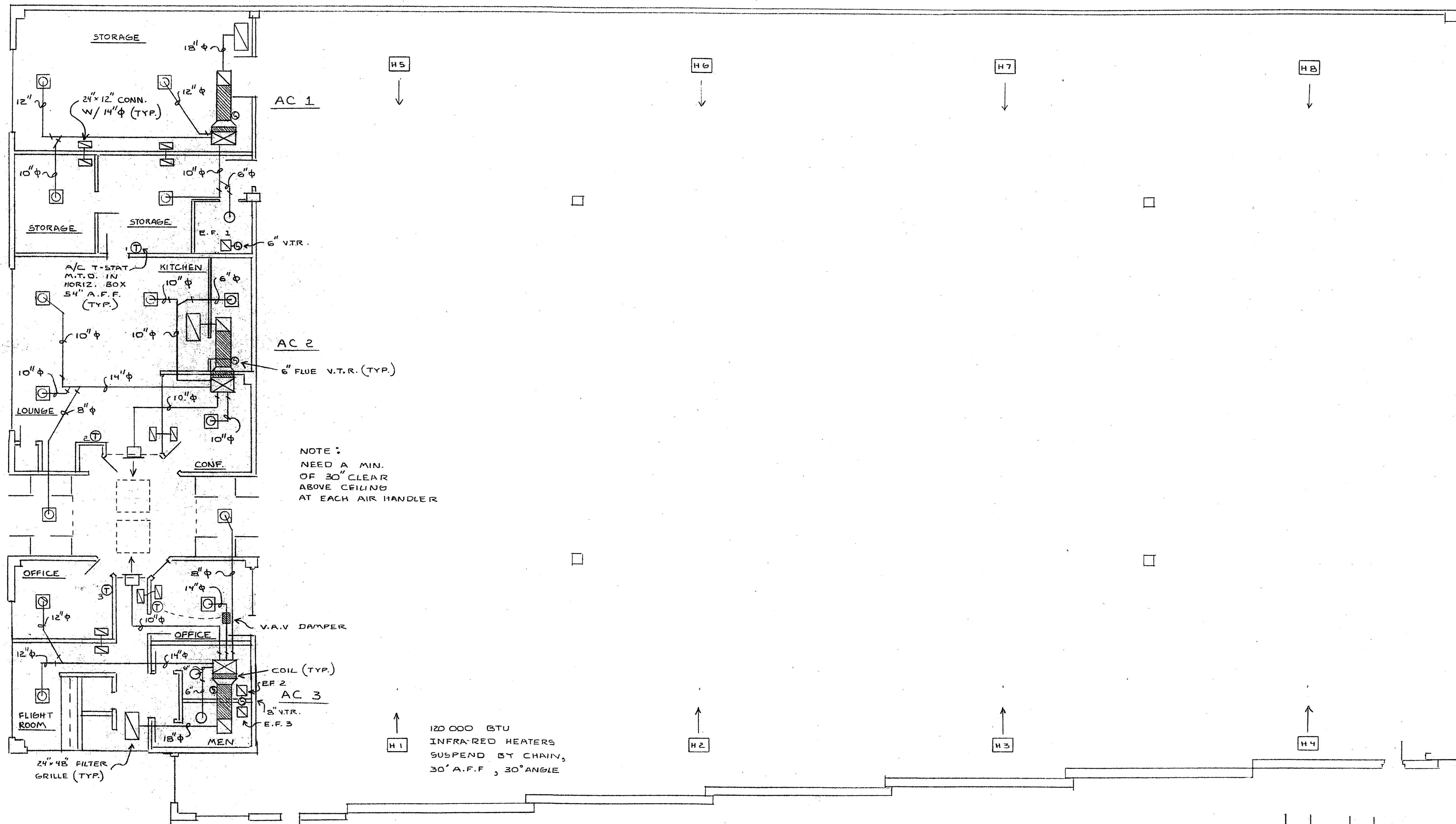


- EQUIPMENT SCHEDULE**
- A/C CONDENSING UNITS #1, 2 & 3 = YORK MODEL # HICF060S06, AMPS = 39 MIN, VOLTS = 208/230-1-60, WEIGHT = 300 LBS, SEER RATING = 10
  - A/C AIR HANDLERS #1, 2 & 3 = YORK MODEL # F1HBD20N09401, 125,000 BTUH GAS HEATING, AMPS = 10, VOLTAGE = 115-1-60, WEIGHT = 230 LBS, SPARK IGNITION.
  - THERMOSTATS = HONEYWELL 7200 PROGRAMMABLE NIGHT SETBACK.
  - INFRA-RED HEATERS #1, 2, 3, 4, 5, 6, 7, & 8 = MODINE MODEL # RH-120, 120,000 BTUH EACH, WEIGHT = 49 LBS
  - EXHAUST FAN #1, 2, & 3 = DAYTON MODEL # 4CB19, .58 AMPS @ 115/ 1/60, WIRED THROUGH LIGHT SWITCH

**DUCTWORK**  
 Supply - PRIME QUALITY SHEETMETAL WITH 1" LINER  
 Return - PRIME QUALITY SHEETMETAL WITH 1" LINER FOR NOISE ATTENUATION.

**Piping:**  
**Refrigeration:**  
 Suction - TYPE "L" COPPER  
 Liquid - TYPE "L" COPPER  
**Drain Lines:** TYPE "M" COPPER  
**Gas Piping:** Schedule 40 black pipe. Final connection, last 3' flexible pipe.

**Insulation:**  
**Ductwork:**  
 Supply - 1" LINER WITH 2" FOIL ON RUNOUTS  
 Return - 1" LINER WITH 2" FOIL ON RUNOUTS  
**Suction Lines:** 3/8" ARMAFLEX  
**Condensate Drain Lines:** 3/8" ARMAFLEX  
**Grilles:**  
 Sidewall Supply Grilles: VHD  
 Ceiling Supply Diffusers: Hart & Cooley #16 w/#12 damper.  
 Hart & Cooley-CV02; NAILOR-HART 24"x24" LAY-1  
 1/4" 1/4" 1/4" eggcrate.  
 Return Grilles:



MECHANICAL SCALE 1/8" = 1'0"

REV.	DATE	BY	DESCRIPTION	JOB NO.
			AIR CONDITIONING LAYOUT FOR DON CARTER AIRPLANE HANGER	

18-11-81 10-11-81  
 19281 Addison RD  
 Addison, TX 75001