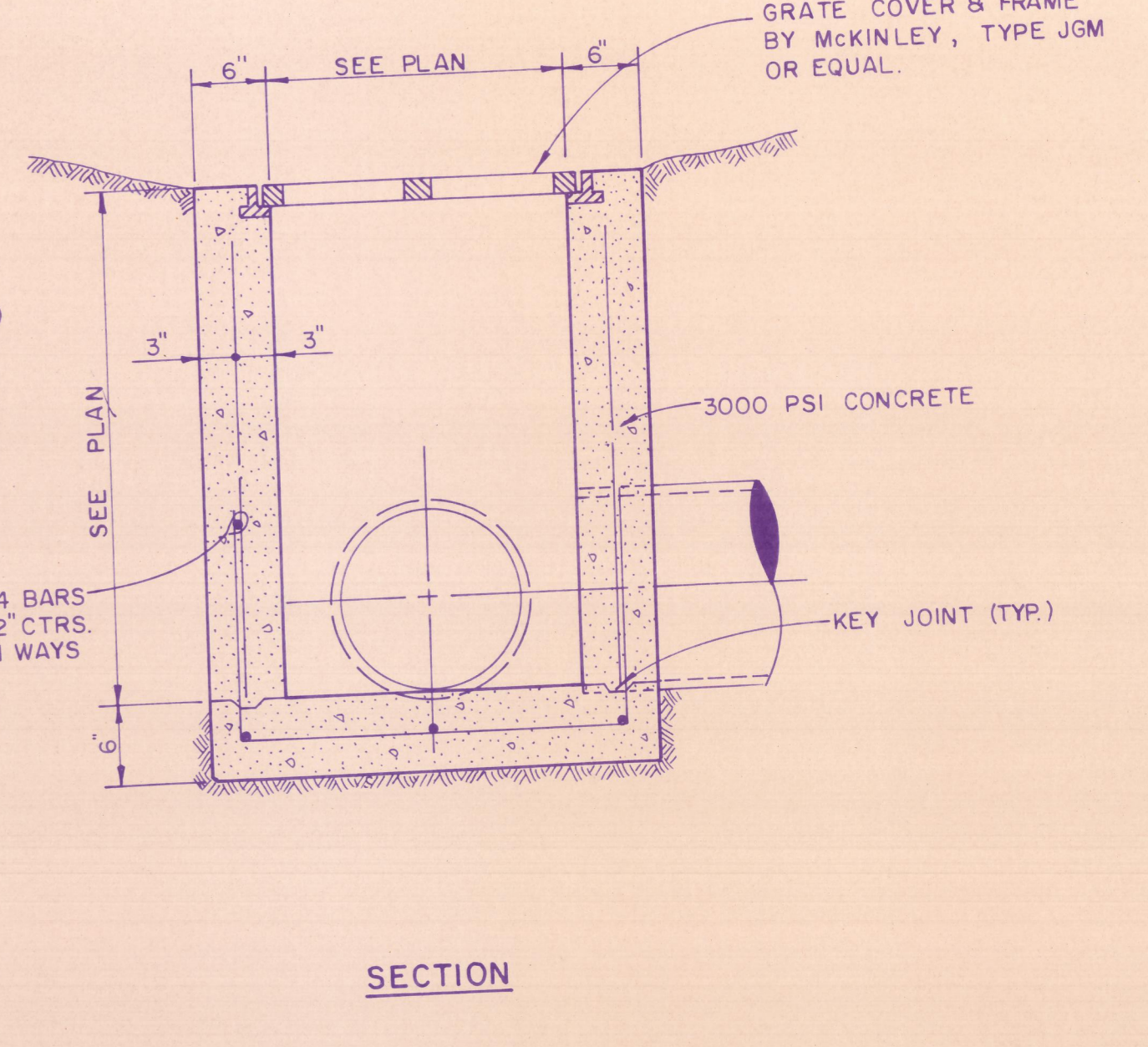
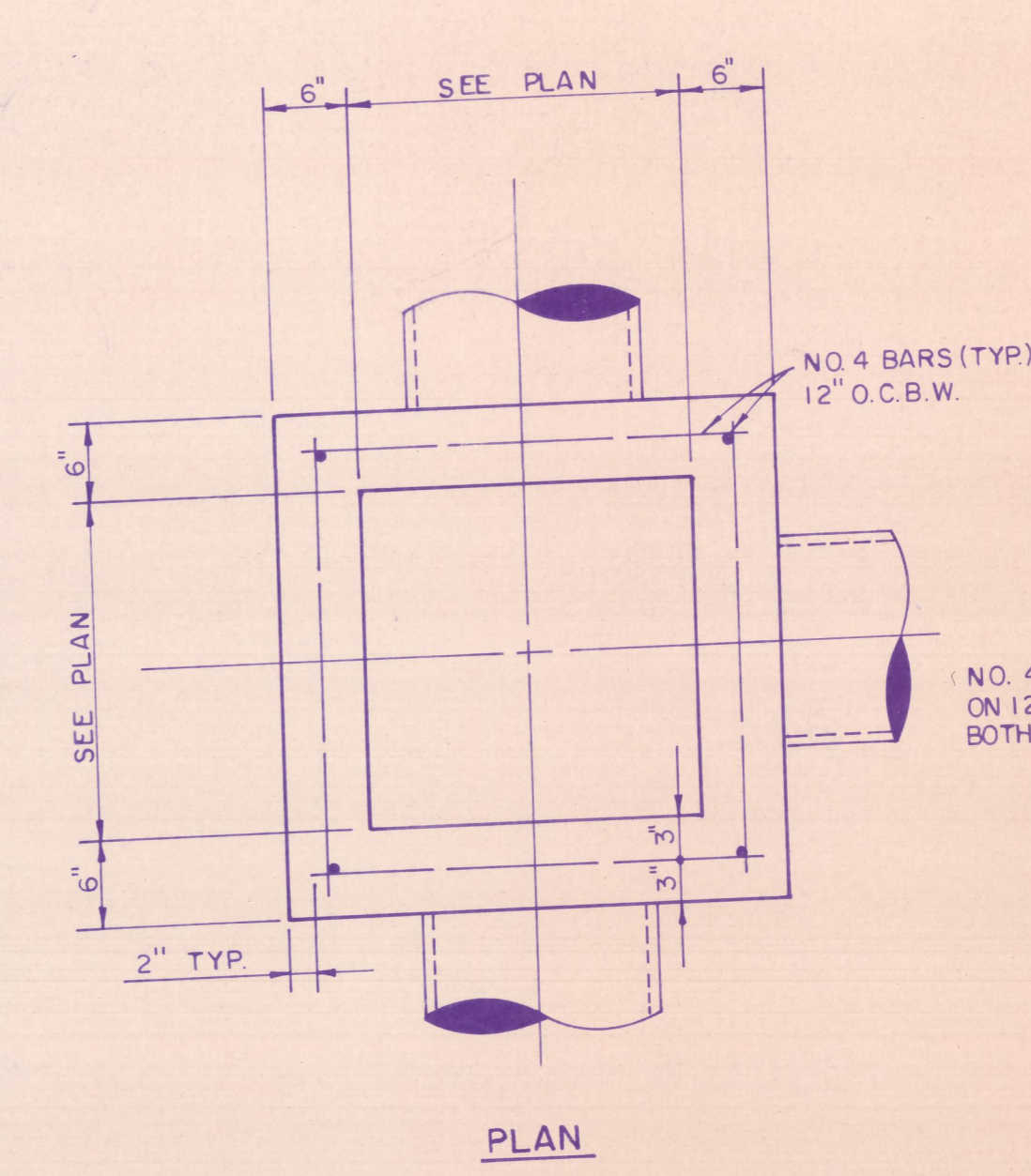
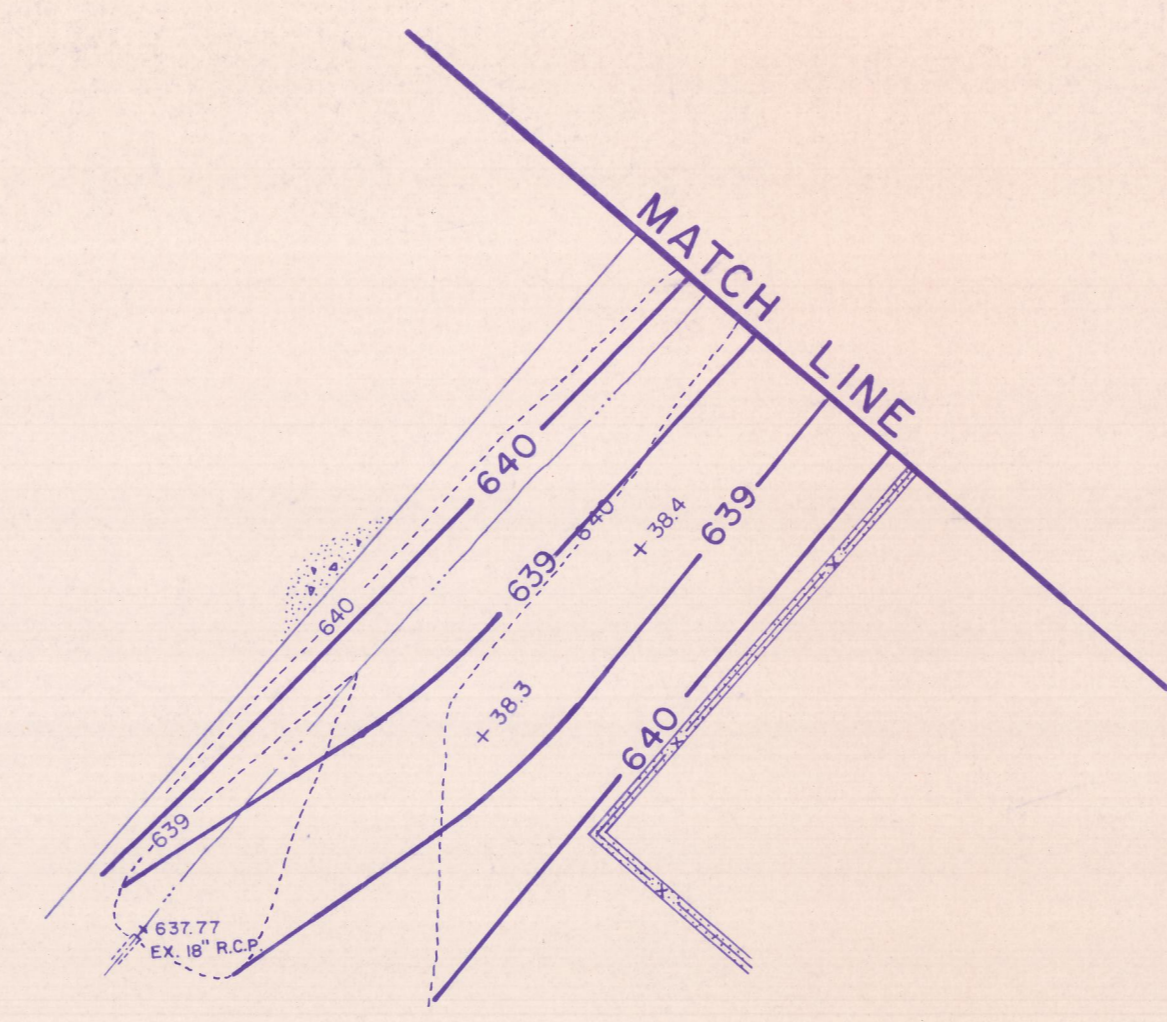
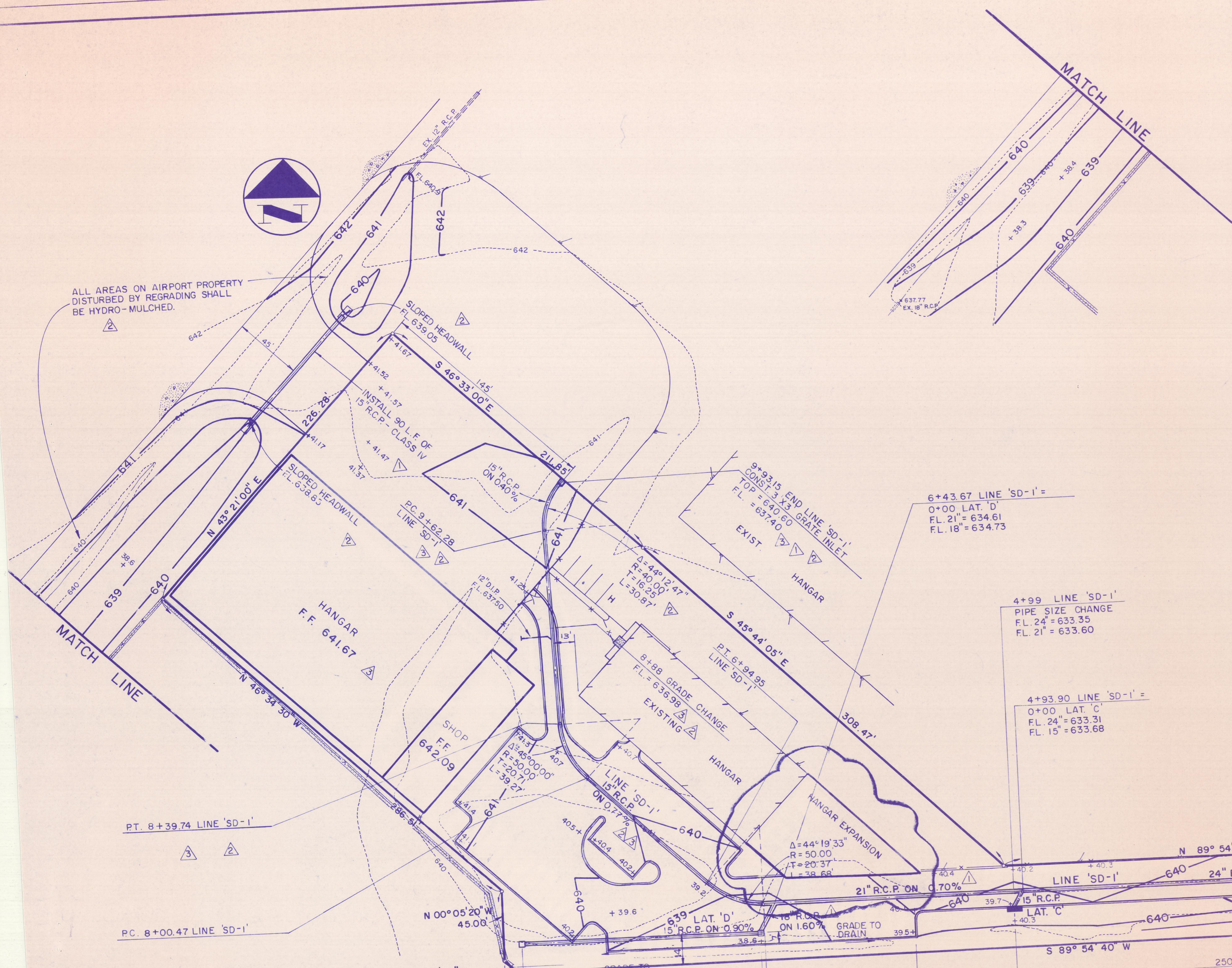
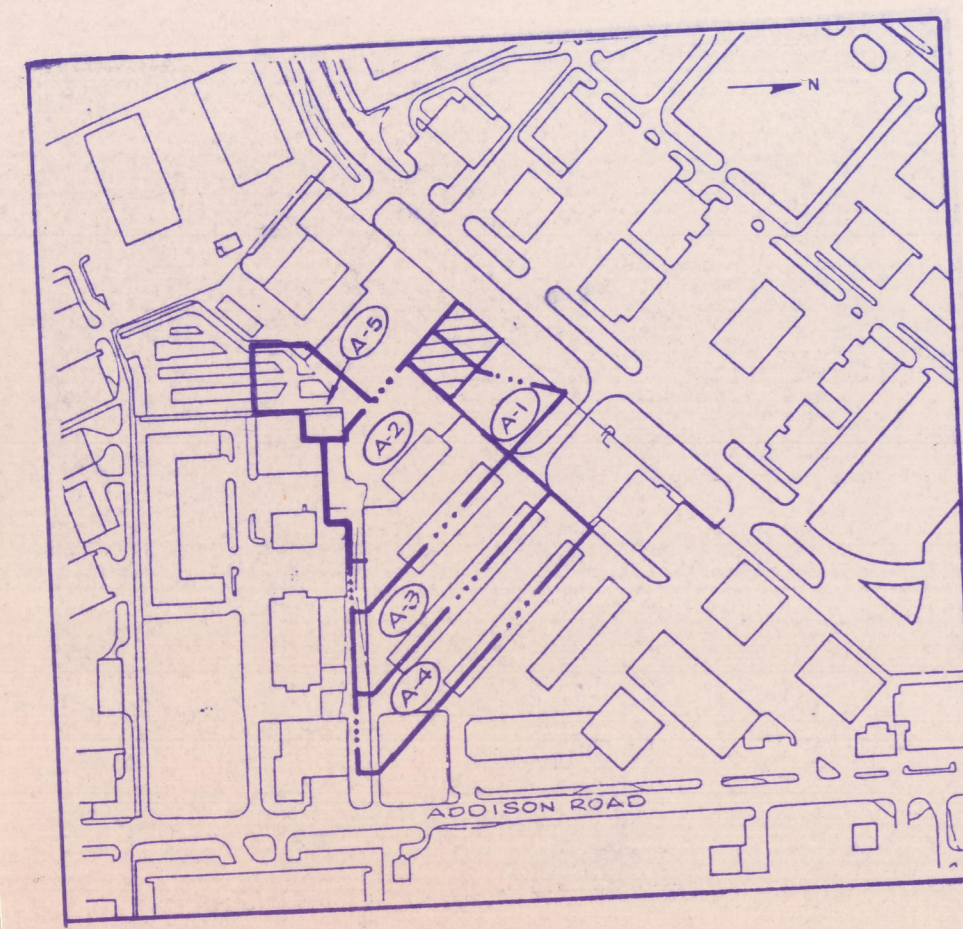


ALL AREAS ON AIRPORT PROPERTY
DISTURBED BY REGRADING SHALL
BE HYDRO-MULCHED.

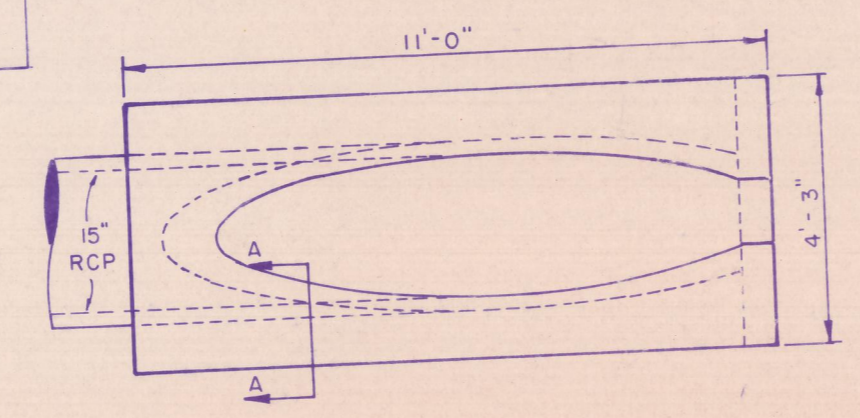
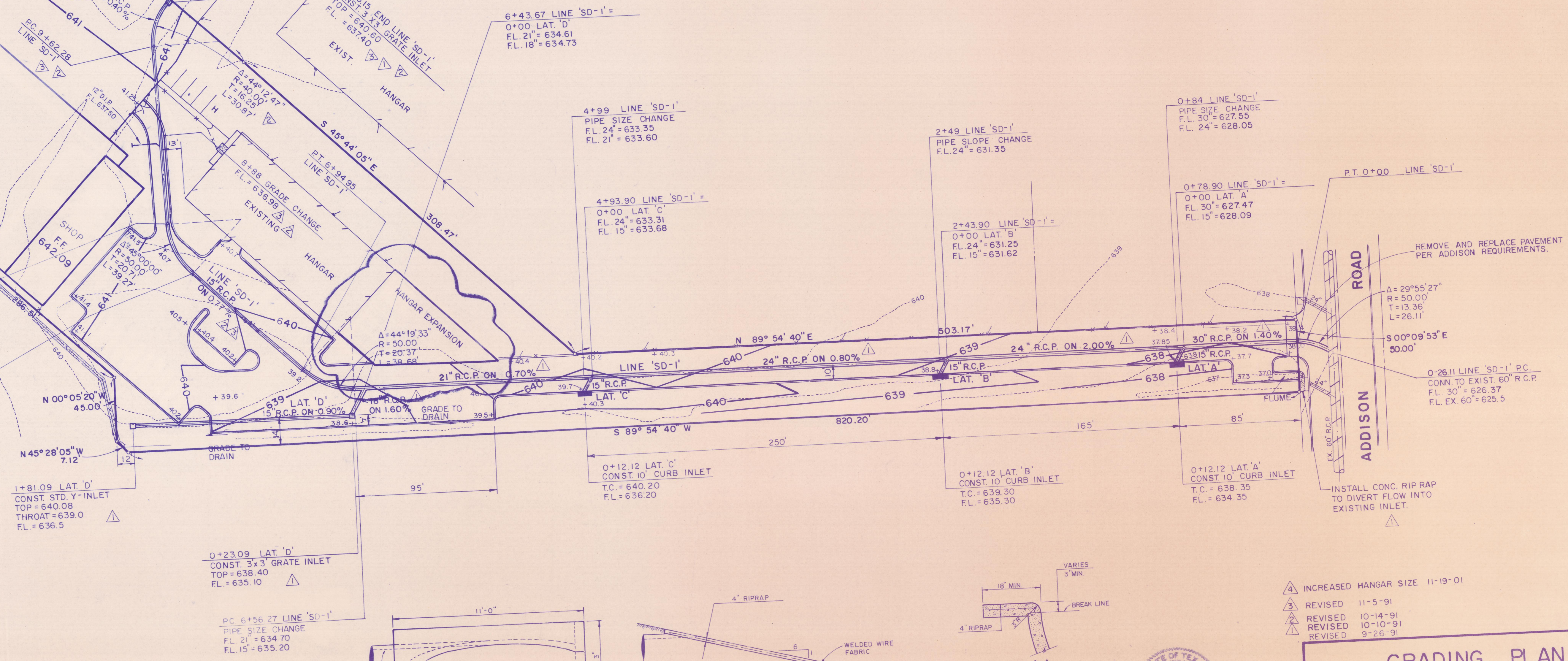


GRATE INLET DETAIL
N.T.S.

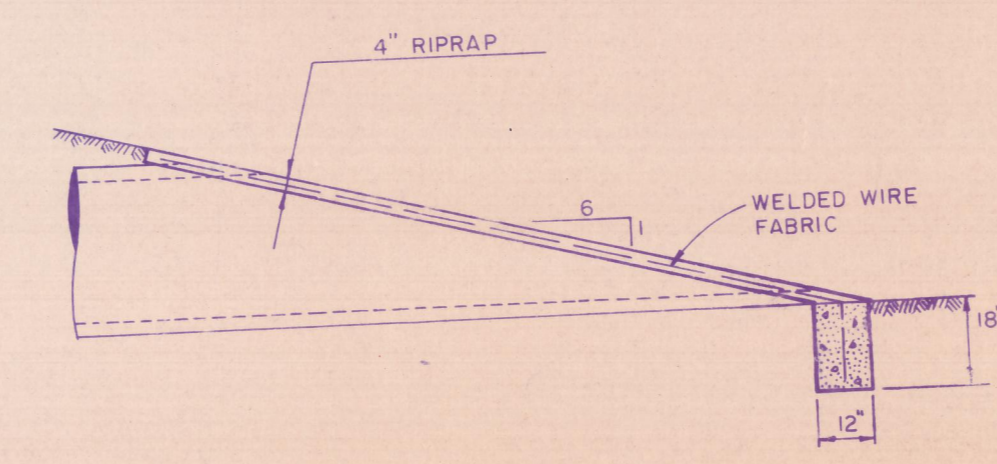


DRAINAGE AREA MAP
1"=400'

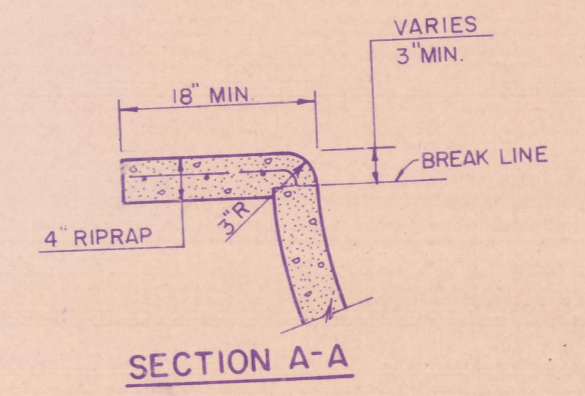
D.A.	AREA	C	I	Q
A-1	0.6	0.85	8.74	4.5
A-2	2.1	0.85	8.74	15.6
A-3	1.6	0.85	8.74	11.9
A-4	1.9	0.85	8.74	14.1
A-5	0.5	0.85	8.74	3.7



SLOPED HEADWALL
N.T.S.



ELEVATION



SECTION A-A

- △ INCREASED HANGAR SIZE 11-19-91
- ③ REVISED 11-5-91
- ② REVISED 10-14-91
- ① REVISED 10-10-91
- ① REVISED 9-26-91

STATE OF TEXAS
 ROBERT L. WRIGHT
 REGISTERED PROFESSIONAL ENGINEER
 9-18-91
 N NEEDHAM WRIGHT LASKEY
 ENGINEERS INC.
 10290 MONROE DRIVE
 SUITE 305
 DALLAS, TEXAS 75229
 PH. 214 357 2981
 SHEET NO. 3

GRADING PLAN						
PERSONAL WAY AVIATION						
TOWN OF ADDISON, TEXAS						
DRAWN	DESIGN	DATE	SCALE	NOTES	FILE	NUMBER
NWL	NWL	9-18-91	1"=40'			