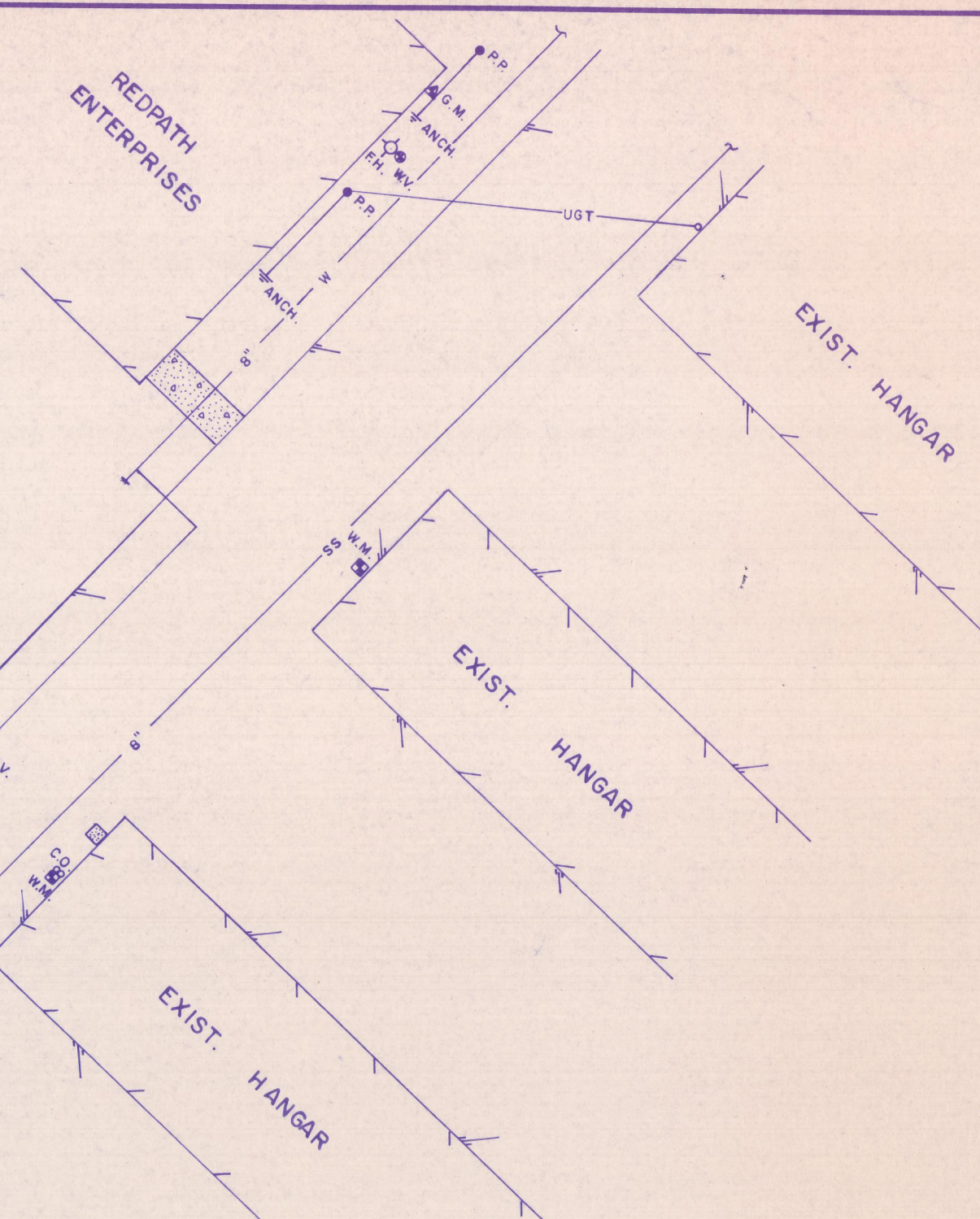
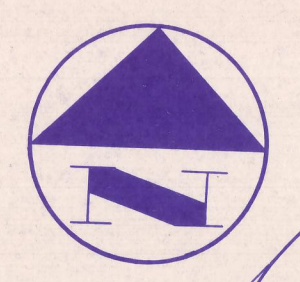


GENERAL NOTES

1. Utilities plotted from the best available information. The Engineer assumes no liability for the accuracy of this information. It shall be the responsibility of the Contractor to verify the location of all existing utilities. Any significant deviation from these plans shall be brought to the attention of the Engineer immediately.
2. All cleanouts, sprinkler control boxes, manholes, meter boxes, etc. shall be adjusted as necessary to match finished grades.
3. All construction materials and procedures to conform to the Town of Addison requirements.
4. DELETED
5. The Contractor shall furnish and install all water meters and boxes in accordance with Town of Addison requirements.
6. The Contractor shall obtain and pay for all city permits required for the construction of these improvements.



*SHOW DEPTH OF M.A. f
PIPE 2'-1" over
EXIST. SS. LINE!*

DOUBLE CHECK VALVE!

CUT & PLUG EX. 1" WATER SERVICE
CONN. TO NEW 2" WATER
ABANDON 1" WATER
EXACT LOCATION OF EX. 1" WATER
LINE NOT KNOWN

CONST. 4.0' DIA M.H. W/6"
STUB-OUT. CONN. TO EX.
8" SS TOP=841.75
REROUTE EXISTING SS.
(LATERAL)

CUT & PLUG
EXIST. 8" S.S.

These lines are to be installed in place of the existing lines. Use size & location of existing lines as a guide.

FIRE LINE?

INSTALL:
2-2" TAPS W/DOMESTIC METERS (1 1/2")
1-1/2" TAP W/IRRIGATION METER (1")

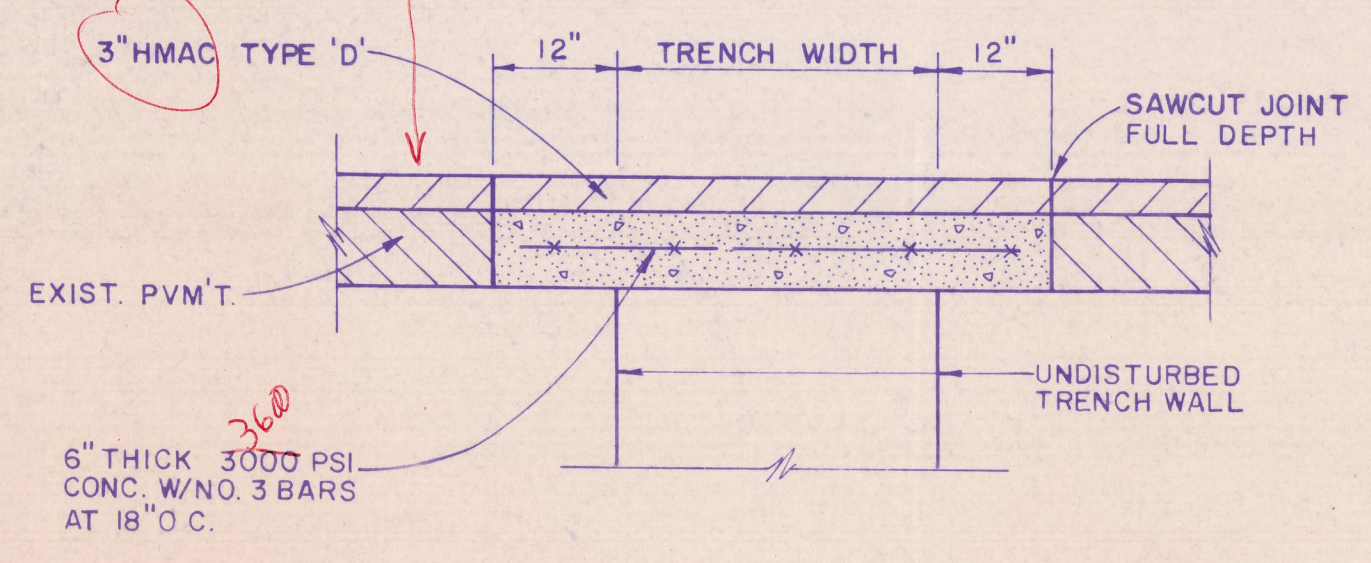
INSTALL DOUBLE CHECK VALVE ON WATER
SERVICES PER CITY STDS.

EX. 10" WATER LINE ESMT.
VOL. B4103, PG. 3367

ADDITION ROAD

REMOVE EXIST. SSMH
& EXIST. 8" SS. LINE

*is this
EXIST. ALSO?*



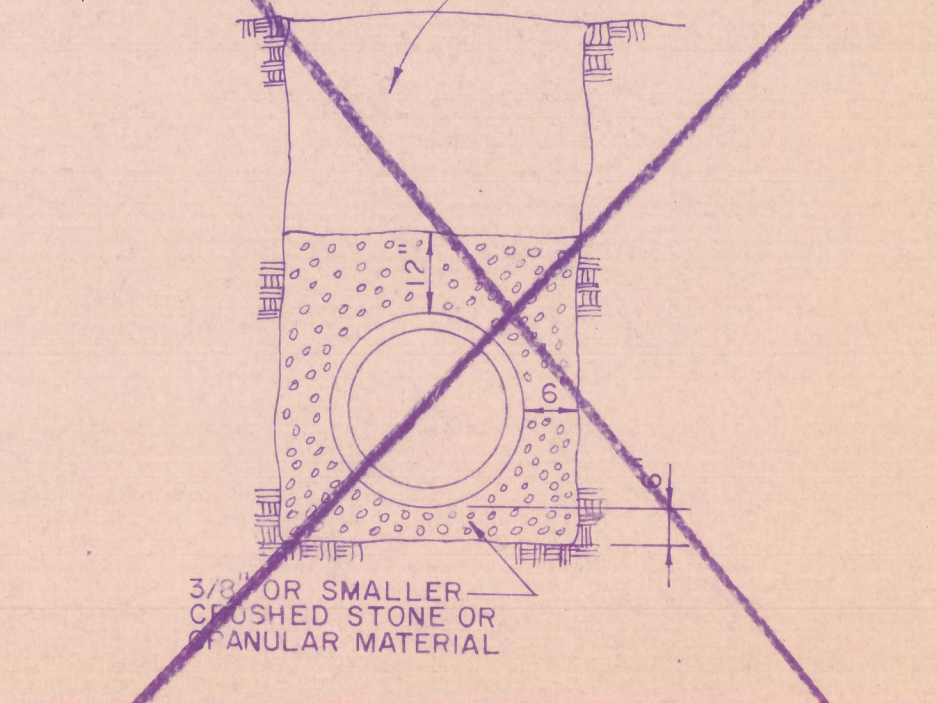
PAVEMENT REPAIR
NTS.

ELECTRICAL NOTES

1. Minimum cover for 2-4" electrical conduits from transformer pad to power pole shall be 39".
2. At power pole, cap one 4" conduit at ground level and extend the other 4" conduit 10 foot above grade. Conduit above grade and all elbows to be rigid galvanized conduit.
3. Transformer pad to be constructed in accordance with TUElectric Specifications DDS-4. All elbows to be rigid galvanized conduit.
4. Coordinate exact location of 2" and 3" secondary electric conduits with Owner.
5. Electrical power is required at the entrance gate. Coordinate service requirements, conduit etc. with Owner.

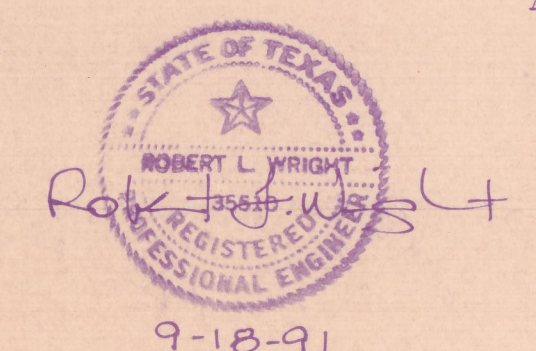
TYPICAL NATIVE MATERIAL COMPACTED TO:
95% OPTIMUM MOISTURE 0 TO ±3% UNDER PAVEMENT
95% OPTIMUM MOISTURE 0 TO ±3% OUTSIDE CURB LINES
JETTING IS NOT ALLOWED. BACKFILL TO BE COMPACTED IN 6" LIFTS.

TYP. NATIVE MATERIAL
MAX. 3" DIA.



SANITARY SEWER EMBEDMENT
NTS.

- △ INCREASED HANGAR SIZE 11-19-91
- △ REVISED 11-19-91
- △ REVISED 11-5-91
- △ REVISED 10-21-91
- △ REVISED 9-26-91



9-18-91

NEEDHAM WRIGHT LASKEY
ENGINEERS INC.
10290 MONROE DRIVE
SUITE 305
DALLAS, TEXAS, 75229
PH. 214 357 2981 SHEET NO. 4

UTILITIES PLAN						
PERSONAL WAY AVIATION						
TOWN OF ADDISON, TEXAS						
DRAWN	DESIGN	DATE	SCALE	NOTES	FILE	NUMBER
NWL.	NWL.	9-18-91	1"=40'			