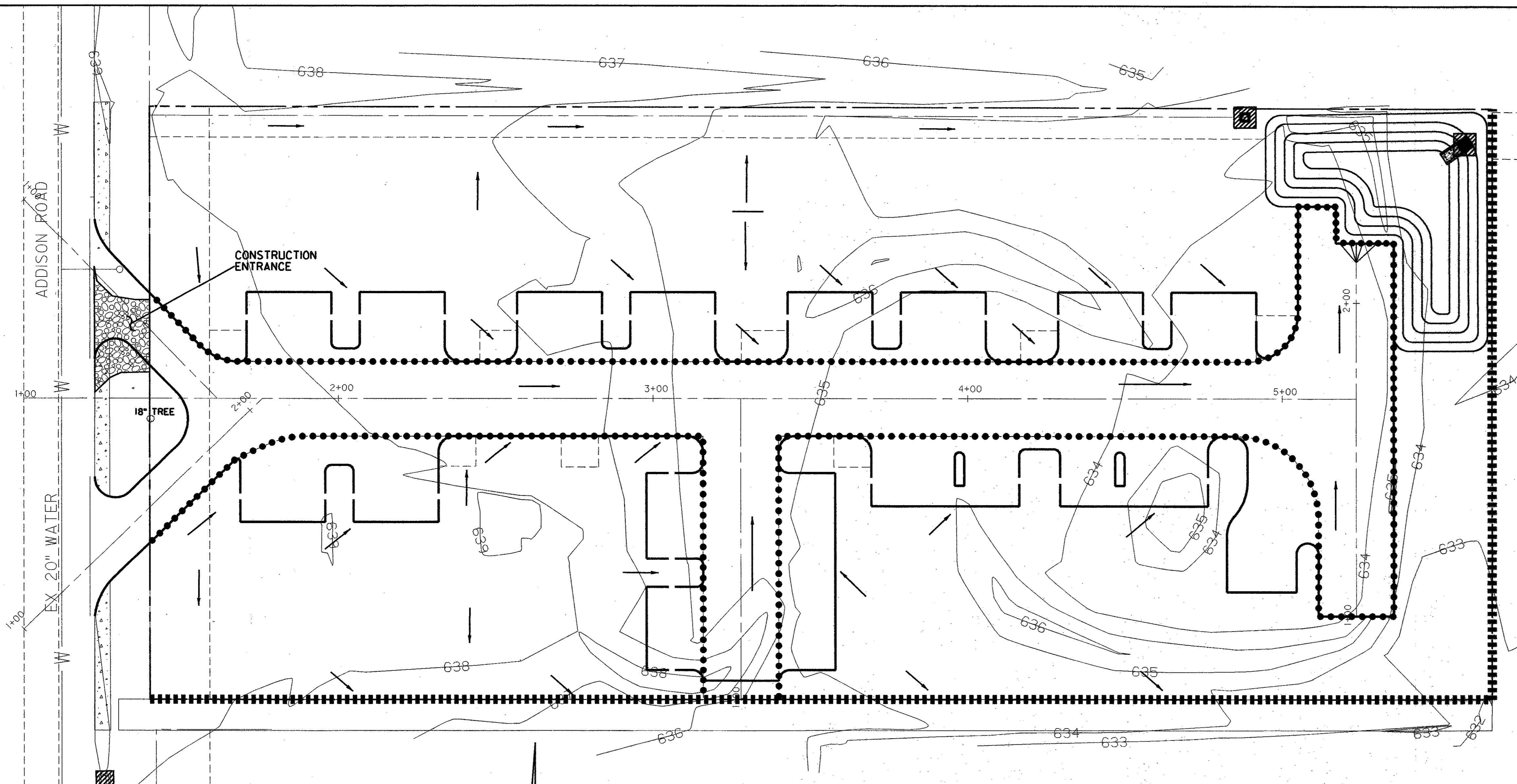


DATE PLOTTED: 09/13/06 08:55 AM 13:32 2006
 JOB # 04144-46
 USER: jbutson
 SCALE: 20.000000 TBL=0.000000 TBL=0.000000 TBL=0.000000 TBL=0.000000 TBL=0.000000 TBL=0.000000
 ROT=90.000000
 PLOT FILE: \\S:\projects\04144-46\04144-46.dwg
 PLOT DEVICE: HPGL2
 PLOTTER: HPGL2
 PLOTTER DRIVER: HPGL2
 PLOTTER MODEL: 5540
 PLOTTER SERIAL: 123456789
 PLOTTER FIRMWARE: 1.00
 PLOTTER PORT: LPT1
 PLOTTER COMMANDS: PLOTT=, PLOT=

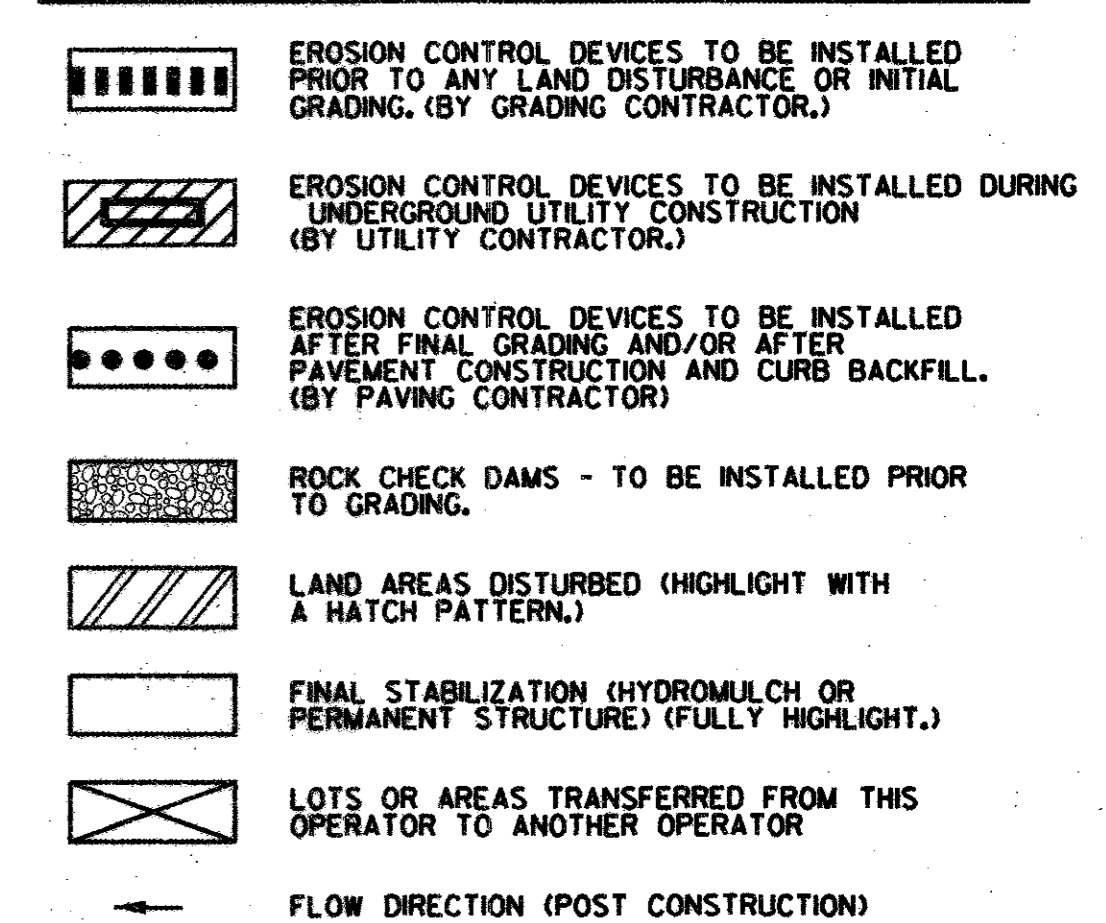


- ### EROSION CONTROL NOTES:
1. ALL PROCEDURES AND MATERIALS USED FOR EROSION CONTROL SHALL BE APPROVED BY THE CITY OF ADDISON.
 2. THE LOCATION OF EROSION CONTROL DEVICES AND INSTALLATION SHALL BE AS SHOWN IN THESE PLANS. ADDITIONAL EROSION CONTROL AND/OR ADJUSTMENT OF LOCATIONS FOR EROSION CONTROL MAY OCCUR PER THE CITY OF ADDISON.
 3. SILT FENCES SHALL BE MIRAFI 100X OR APPROVED EQUAL AND INSTALLED PER MANUFACTURER RECOMMENDATIONS.
 4. EACH CONTRACTOR SHALL BE RESPONSIBLE FOR MAINTAINING ALL EROSION CONTROL DEVICES ALREADY IN PLACE. CONTRACTOR SHALL REMOVE AND REPLACE EROSION CONTROL AS NEEDED FOR CONSTRUCTION OR ACCESS. ALL EROSION CONTROL MUST BE IN PLACE AT THE END OF EACH DAY.
 5. ALL PERIMETER SWALES SHALL BE GRADED PRIOR TO EXTENSIVE ONSITE STREET AND SITE GRADING.
 6. IT SHALL BE THE CONTRACTOR'S RESPONSIBILITY TO USE WHATEVER MEANS ARE NECESSARY TO CONTROL AND LIMIT SILT AND SEDIMENT LEAVING THE SITE. SPECIFICALLY, THE CONTRACTOR SHALL PROTECT ALL PUBLIC STREETS, ALLEYS, STREAMS, STORM DRAIN SYSTEMS AND INLETS FROM EROSION DEPOSITS.
 7. EROSION CONTROL DEVICES COULD BE SILT FENCE, VEGETATIVE BUFFER STRIP, DIVERSION SWALES (BUNDROWS), AND OTHER DEVICES ALLOWED BY THE EPA. FLOW FROM DIVERSION SWALES WILL BE FILTERED THROUGH STRUCTURAL CONTROLS SUCH AS SILT FENCES, ETC. PRIOR TO BEING RELEASED INTO PAVED AREAS OR STORM SEWER SYSTEMS.
 8. CONTROLS SHOULD BE SELECTED, INSTALLED, AND MAINTAINED IN ACCORDANCE WITH MANUFACTURERS SPECIFICATIONS AND PER THE DETAILS ON THIS SHEET.
 9. IF SEDIMENT ESCAPES THE SITE, OFF-SITE ACCUMULATIONS MUST BE REMOVED AT A FREQUENCY SUFFICIENT TO MINIMIZE OFF-SITE IMPACTS.
 10. SEDIMENT MUST BE REMOVED FROM TRAPS AND PONDS WHEN DESIGN CAPACITY HAS BEEN REDUCED BY 50%.
 11. THIS EROSION CONTROL PLAN AND ACCOMPANYING STORM WATER POLLUTION PREVENTION PLAN DOES NOT ADDRESS A BATCH PLANT BEING PLACED ON THIS SITE. IF THE OPERATOR DESIRES COVERAGE FOR A BATCH PLANT, SOME MODIFICATIONS ARE NECESSARY. A SEPARATE BATCH PLANT EROSION CONTROL PLAN AND STORM WATER POLLUTION PREVENTION PLAN MAY BE OBTAINED BY THE BATCH PLANT OWNER.
 12. THIS EROSION CONTROL PLAN AND ACCOMPANYING STORM WATER POLLUTION PREVENTION PLAN ASSUMES NO EXCESS EXCAVATED MATERIAL WILL BE PLACED OUTSIDE THE LIMITS OF THIS SITE. MODIFICATIONS TO THE EROSION CONTROL PLAN AND THE STORM WATER POLLUTION PREVENTION PLAN WILL BE NECESSARY IF EXCESS EXCAVATED MATERIAL IS NOT KEPT ON-SITE.

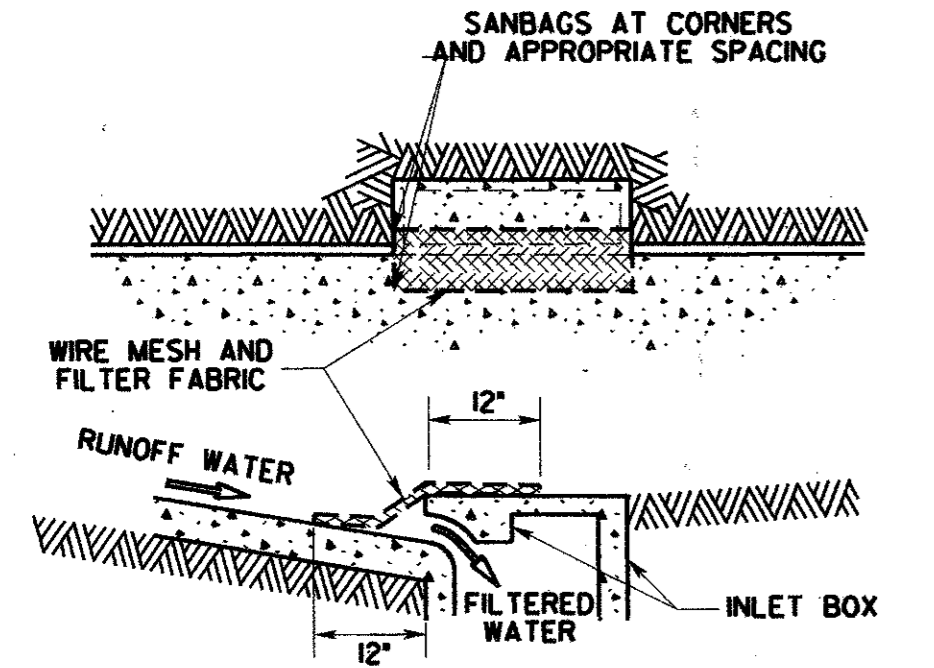
INSTRUCTIONS TO OPERATOR

- OPERATOR SHALL**
1. ACTIVELY MAINTAIN THIS EROSION CONTROL PLAN AND THE ASSOCIATED STORM WATER POLLUTION PREVENTION PLAN.
 2. POST CONSTRUCTION SITE NOTICE PROVIDED IN SWPPP AT OR NEAR THE CONSTRUCTION ENTRANCE.
 3. WRITE NAME AND DATE AT EACH LOCATION WHERE EROSION CONTROL DEVICE IS INSTALLED.
 4. SHOW ON THESE PLANS LOCATION AND WRITE NAME AND DATE OF INSTALLATION ON ALL CONSTRUCTION ENTRANCES, EQUIPMENT STORAGE LOCATIONS, MATERIAL STORAGE LOCATIONS, VEHICLE WASHES, AND SANITARY FACILITIES.
 5. WITH A HIGHLIGHTER, MARK THOSE AREAS WHERE VEGETATION HAS BEEN STRIPPED OR WHERE SOIL HAS BEEN DISTURBED. DATE OF DISTURBANCE SHALL BE PLACED IN THESE AREAS. SEE LEGEND.
 6. SOLID FILL, WITH A HIGHLIGHTER, THOSE AREAS WHERE CONSTRUCTION HAS CEASED AND PERMANENT VEGETATION IS BEING ESTABLISHED. SEE LEGEND.
 7. DATE REMOVAL OF EROSION CONTROL DEVICES AND NOTE REASON FOR REMOVAL IN THE SWPPP.
 8. CROSS OUT AND DATE ANY LOTS THAT HAVE BEEN TRANSFERRED TO A SEPARATE OPERATOR. A NOTICE OF CHANGE SHALL BE MAILED TO THE TCEQ, AND A COPY SHALL BE PLACED IN THE SWPPP.
 9. PRIOR TO BEGINNING OPERATOR SHALL MAKE COPIES OF PLAN, IF CURRENT PLAN BECOMES TOO CROWDED FOR USE, OPERATOR SHALL PLACE "SEE REVISED PLAN" WITH DATE ON CURRENT PLAN, AND BEGIN TO USE A COPY FOR NEW PLAN.

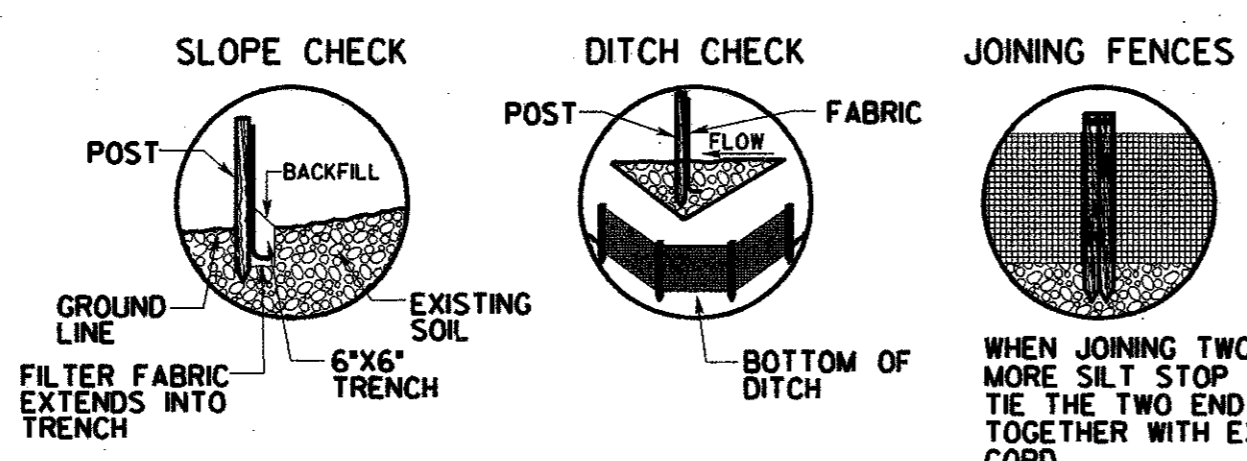
EROSION CONTROL MEASURES



INSTALL INLET PROTECTION ON EXISTING INLET PRIOR TO INITIAL GRADING

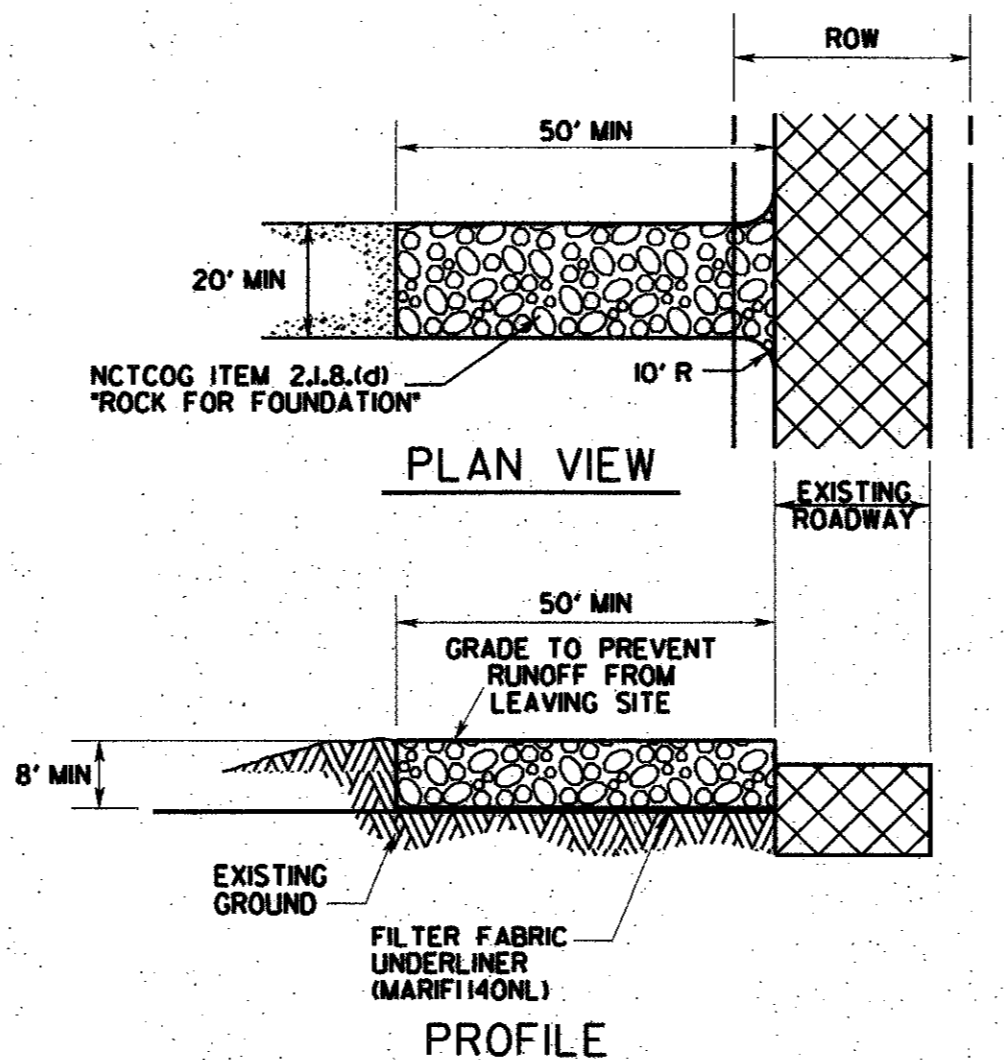


SEDIMENT BARRIER AT INLETS
OR APPROVED EQUAL AFTER PAVEMENT CONSTRUCTION
(NOT TO SCALE)



SILT FENCE DETAIL
(NOT TO SCALE)

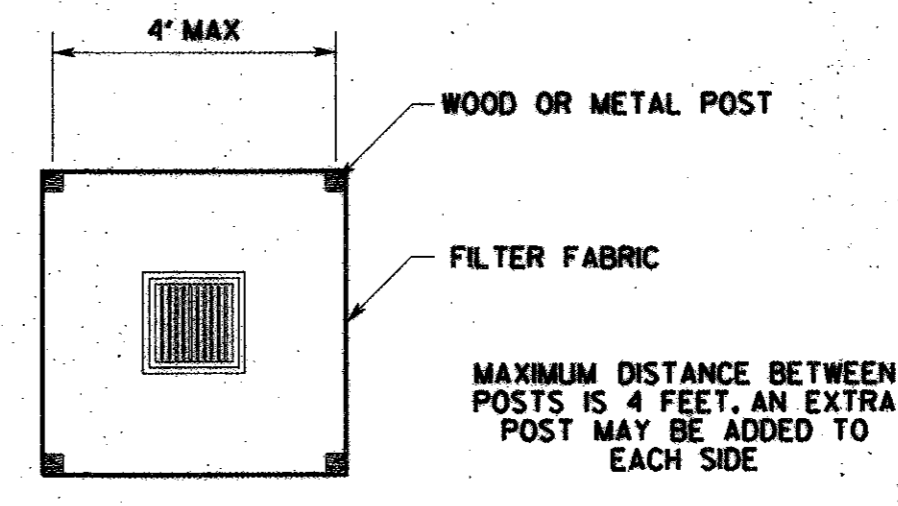
- NOTE:**
- 1.) SILT FENCE FABRIC SHALL BE MIRAFI 100 X OR EQUAL.
 - 2.) INSTALL SILT FENCES AND HAY BALES AT LOCATIONS DIRECTED BY OWNER.
 - 3.) FENCE POSTS SHALL BE GALVANIZED STEEL AND MAY BE ROLLED, FORMED OR TUBULAR IN SECTION. "T" POSTS MAY BE USED WHEN IN CONFORMANCE WITH SPECIFICATION.



CONSTRUCTION ENTRANCE DETAIL
(NOT TO SCALE)

IF APPLICABLE, A TRAFFIC RATED CATTLE GUARD MAY BE USED AS A SEDIMENT TRAPPING DEVICE, STRATEGICALLY PLACED ALONG THE CONSTRUCTION ENTRANCE

- NOTE:**
1. APPROXIMATE AREA TO BE DISTURBED IS 2.0 ACRES FOR CONSTRUCTION
 2. CONSTRUCTION ENTRANCE LOCATION TO BE SELECTED BY CONTRACTOR AND APPROVED BY OWNER.

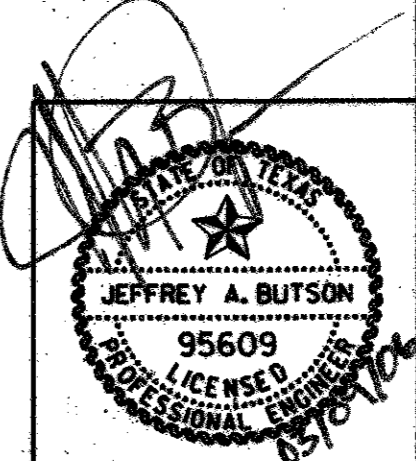


SILT FENCE INLET SEDIMENT FILTER
(NOT TO SCALE)

NOTE: BOTTOM OF THE FILTER FABRIC IS BURIED IN TRENCH THE SAME AS WHEN IT IS INSTALLED AS A SILT FENCE. SEE SILT FENCE DETAIL, THIS SHEET

RECORD DRAWING

THIS DRAWING HAS BEEN MODIFIED TO REFLECT CONSTRUCTION RECORDS PROVIDED TO THE ENGINEER



DATE	REVISION	MADE	CKD	APPD
<p>Carter-Burgess Carter & Burgess, Inc. 7950 Elmbrook Drive Dallas, Texas 75247-4961 (214) 638-0445 Metro (214) 263-2019 Fax (214) 638-0447</p>				
<p>EROSION CONTROL PLAN ADDISON OFFICE CONDOS</p>				
<p>TOWN OF ADDISON, DALLAS COUNTY, TEXAS</p>				
DESIGN	DRAWN	CHECKED	SCALE	DATE
TIPTON	SMITH	BUTSON	1" = 20'	MARCH'06
FILE	NO.			
01-6628	14 OF 17			