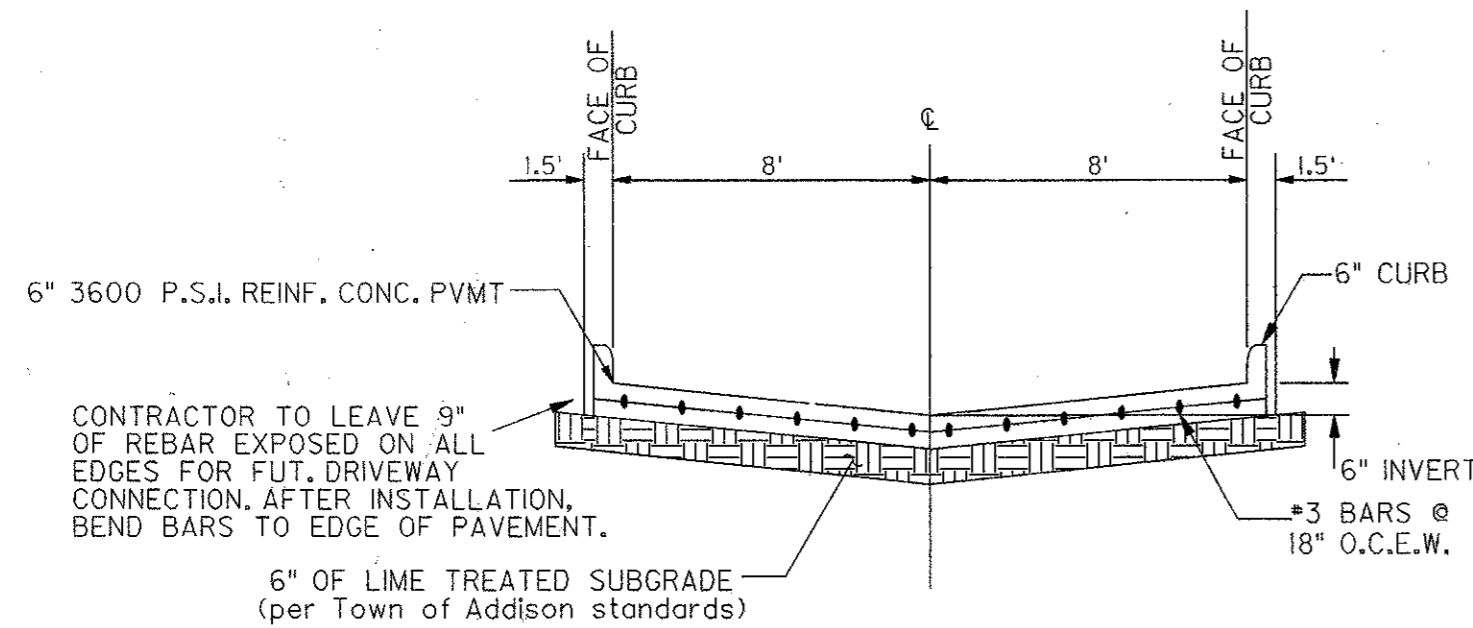
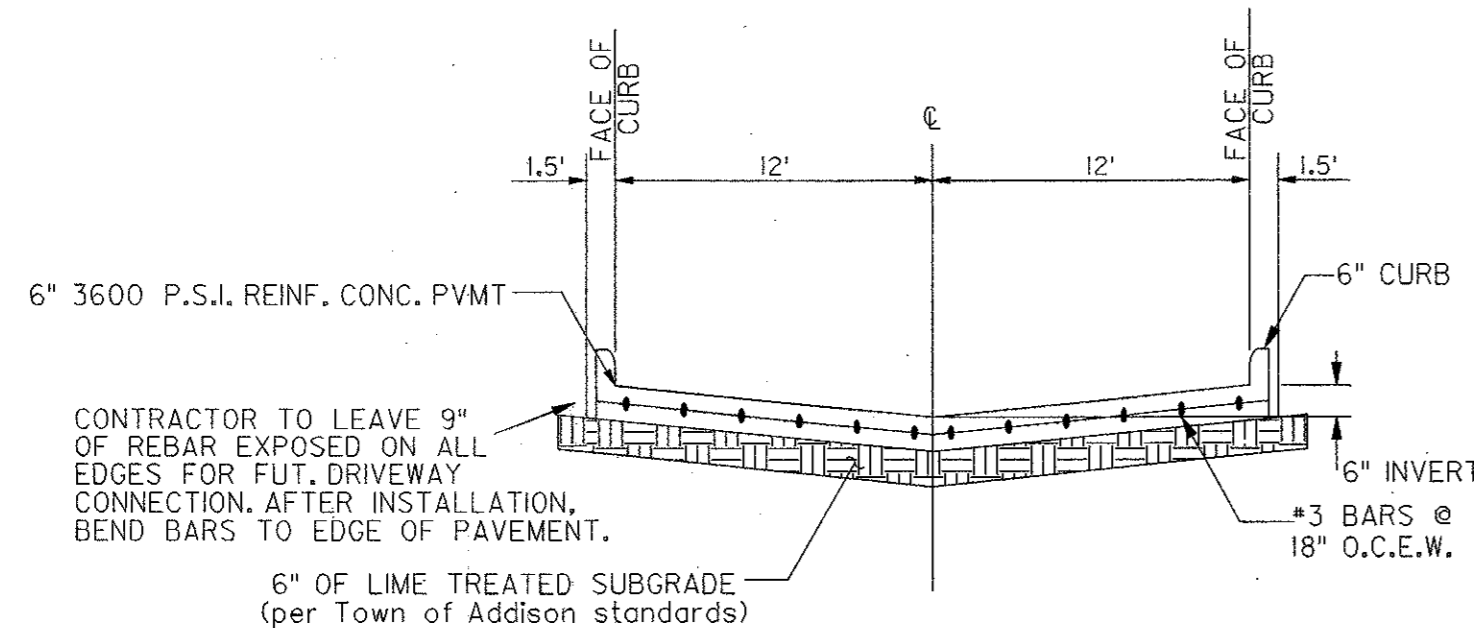


- NOTE:
1. T-8" AND GREATER NO. 6 BAR, T-6" AND LESS NO. 5 BAR
 2. LONGITUDINAL BUTT CONSTRUCTION MAY BE UTILIZED IN PLACE OF LONGITUDINAL HINGED (KEYWAY) JOINT AT CONTRACTORS OPTION.
 3. DOWEL BARS SHALL BE DRILLED INTO PAVEMENT HORIZONTALLY BY USE OF A MECHANICAL RIG. HAND DRILLING NOT ACCEPTABLE. DAMAGE TO EXISTING PAVEMENT SHALL BE REMOVED BY CONTRACTOR AND JOINT CONSTRUCTED AT CONTRACTORS EXPENSE.
 4. DOWEL BAR SHOWN IS IN ADDITION TO TIE BARS (12" O.C.-6" OFF DOWELS).
 5. TIE BARS SHALL BE NO. 5 BAR DEFORMED. TIE BAR SHALL HAVE A LENGTH OF 24 INCHES.

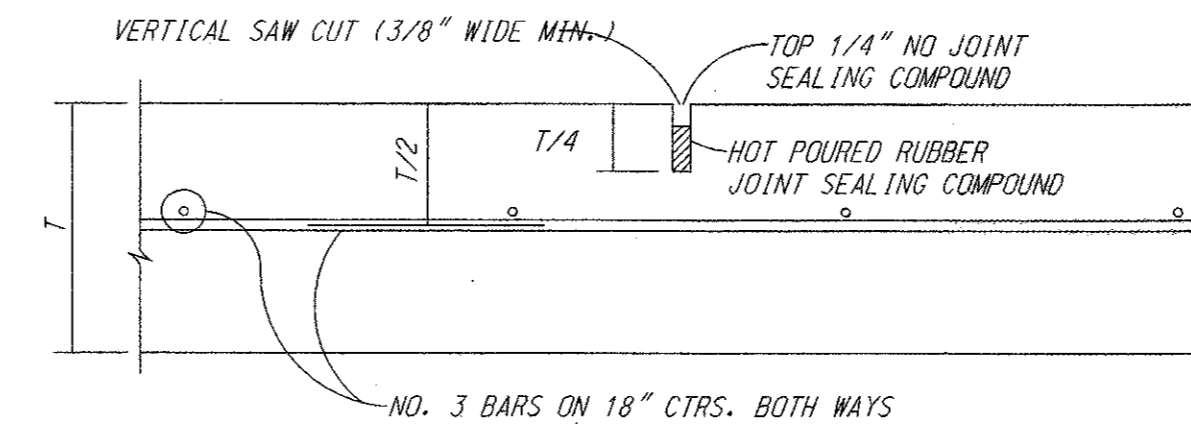
LONGITUDINAL BUTT JOINT



TYPICAL SECTION
 SHARED DRIVE D & E
 N.T.S.

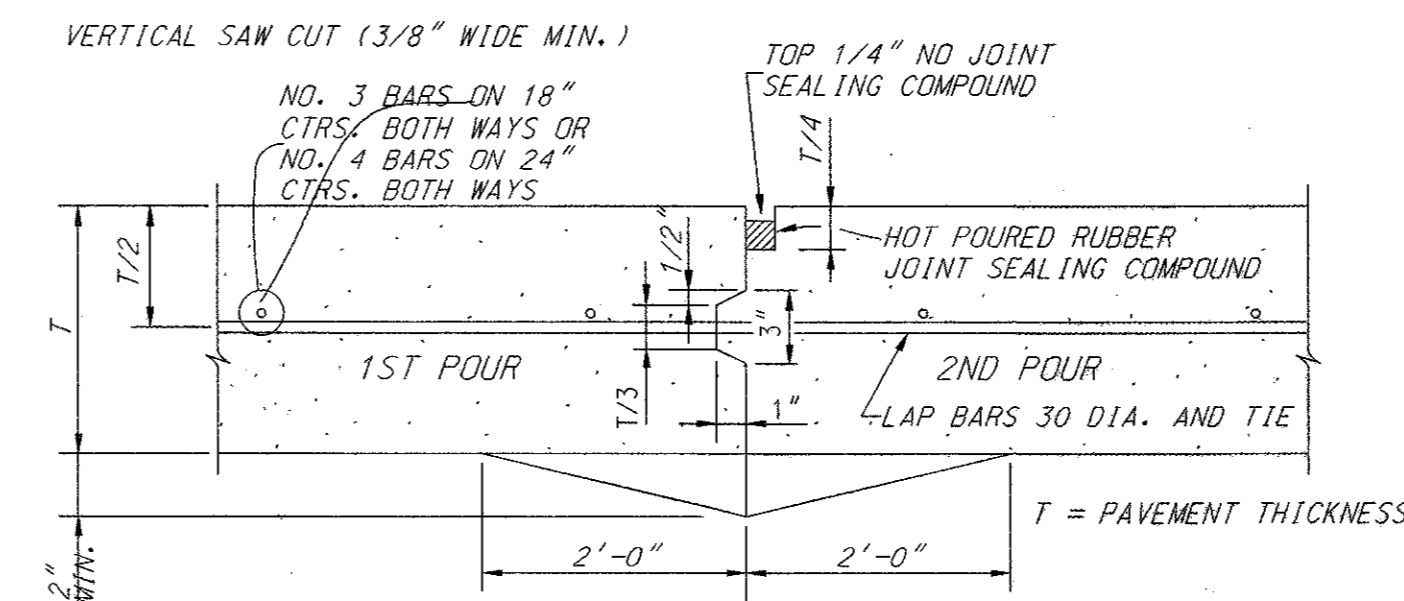


TYPICAL SECTION
 SHARED DRIVE A, B, & C
 N.T.S.



TRANSVERSE JOINTS SPACED 15 FT. C.-C. (MAX.)
 LONGITUDINAL JOINTS SPACED 20 FT. C.-C. (MAX.)

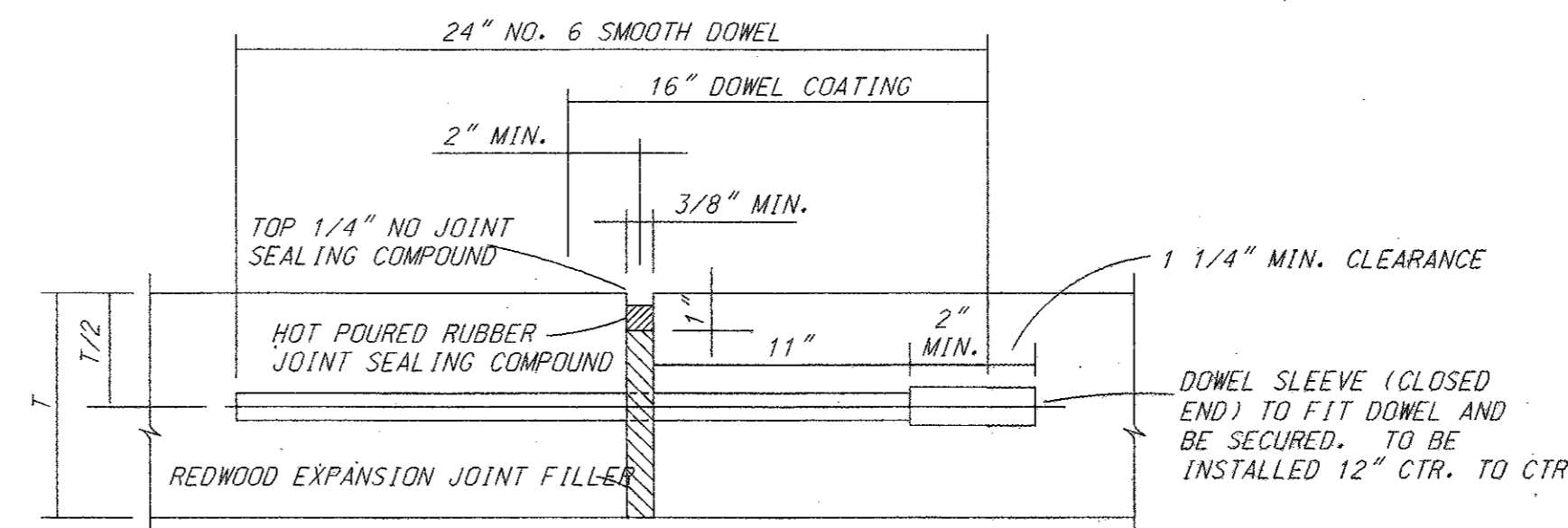
SAWED DUMMY JOINT



CONSTRUCTION JOINT NOTES:

1. CONTRACTOR SHALL PROTECT KEYWAY PRIOR TO SECOND POUR. IF LONGITUDINAL KEYWAY IS DAMAGED, CONTRACTOR SHALL REPAIR WITH THE USE OF LONGITUDINAL BUTT JOINT (DRILL DOWELS INTO FIRST POUR).
2. THICKENED EDGES ARE REQUIRED FOR FUTURE WIDENING ONLY.

CONSTRUCTION JOINT



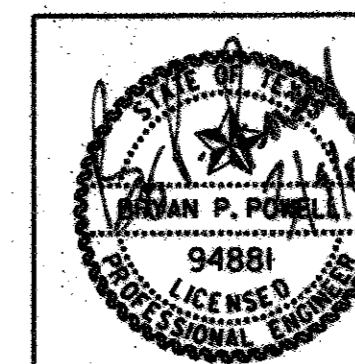
TRANSVERSE EXPANSION JOINT NOTES:

1. DOWELS AND REINFORCING BARS SHALL BE SUPPORTED BY AN APPROVED DEVICE.
2. TRANSVERSE EXPANSION JOINTS SHALL BE SPACED AT 60 FT. MAXIMUM AND AT ALL INTERSECTIONS.

TRANSVERSE EXPANSION JOINT

RECORD DRAWING

THIS DRAWING HAS BEEN MODIFIED
 TO REFLECT CONSTRUCTION RECORDS
 PROVIDED TO THE ENGINEER



DATE	REVISION	MADE	CKD	APPD
Carter=Burgess				
Carter & Burgess, Inc. 7950 Elmbrook Drive Dallas, Texas 75247-4961 (214) 638-0445 Metro (214) 263-2019 Fax (214) 638-0447				
PAVING DETAILS				
ADDISON OFFICE CONDOS				
TOWN OF ADDISON, DALLAS COUNTY, TEXAS				
DESIGN	DRAWN	CHECKED	SCALE	DATE
TIPTON	GUERIN	POWELL	1" = 20'	MARCH'06
FILE	NO.			
01-6628	17 OF 17			