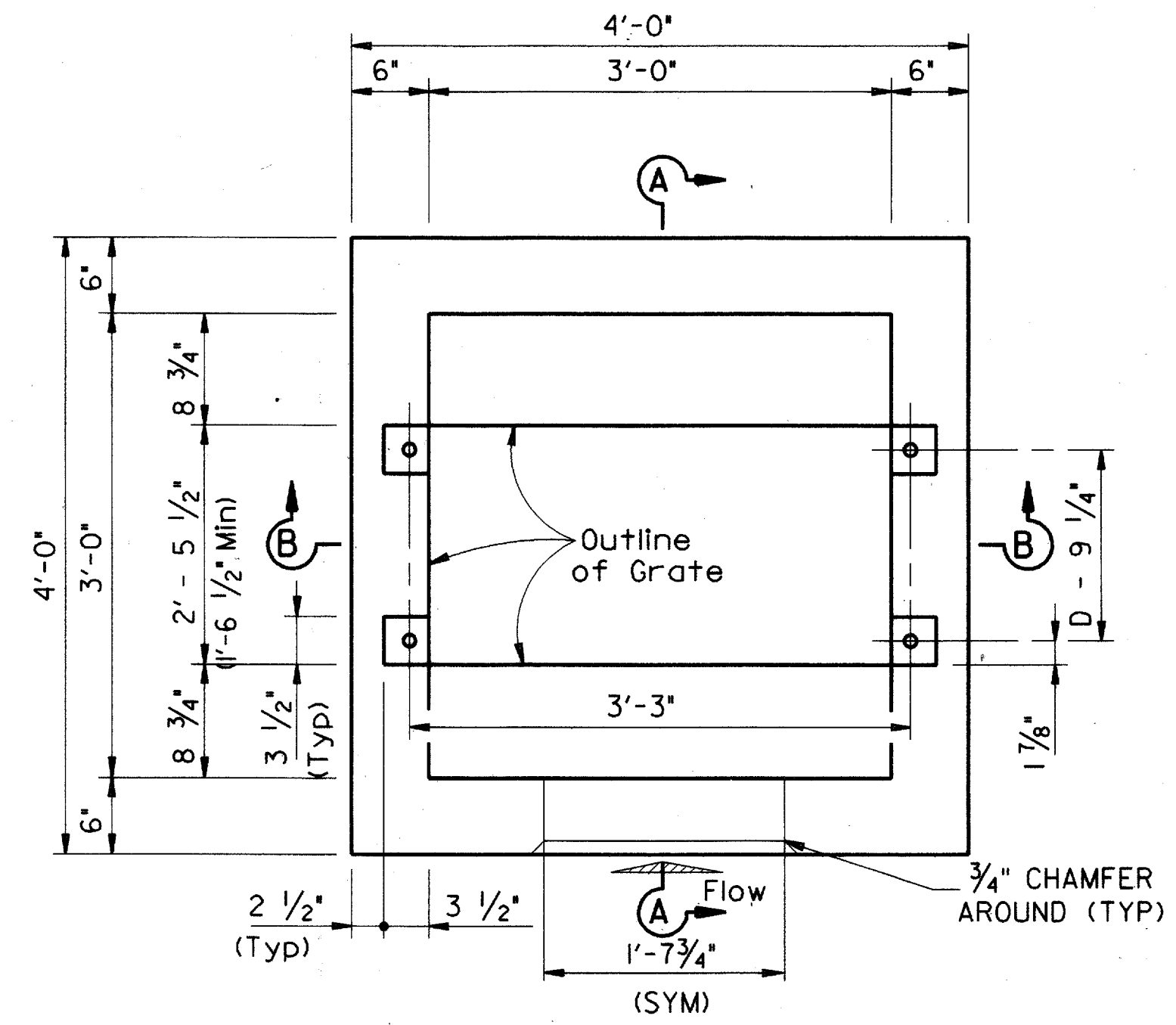
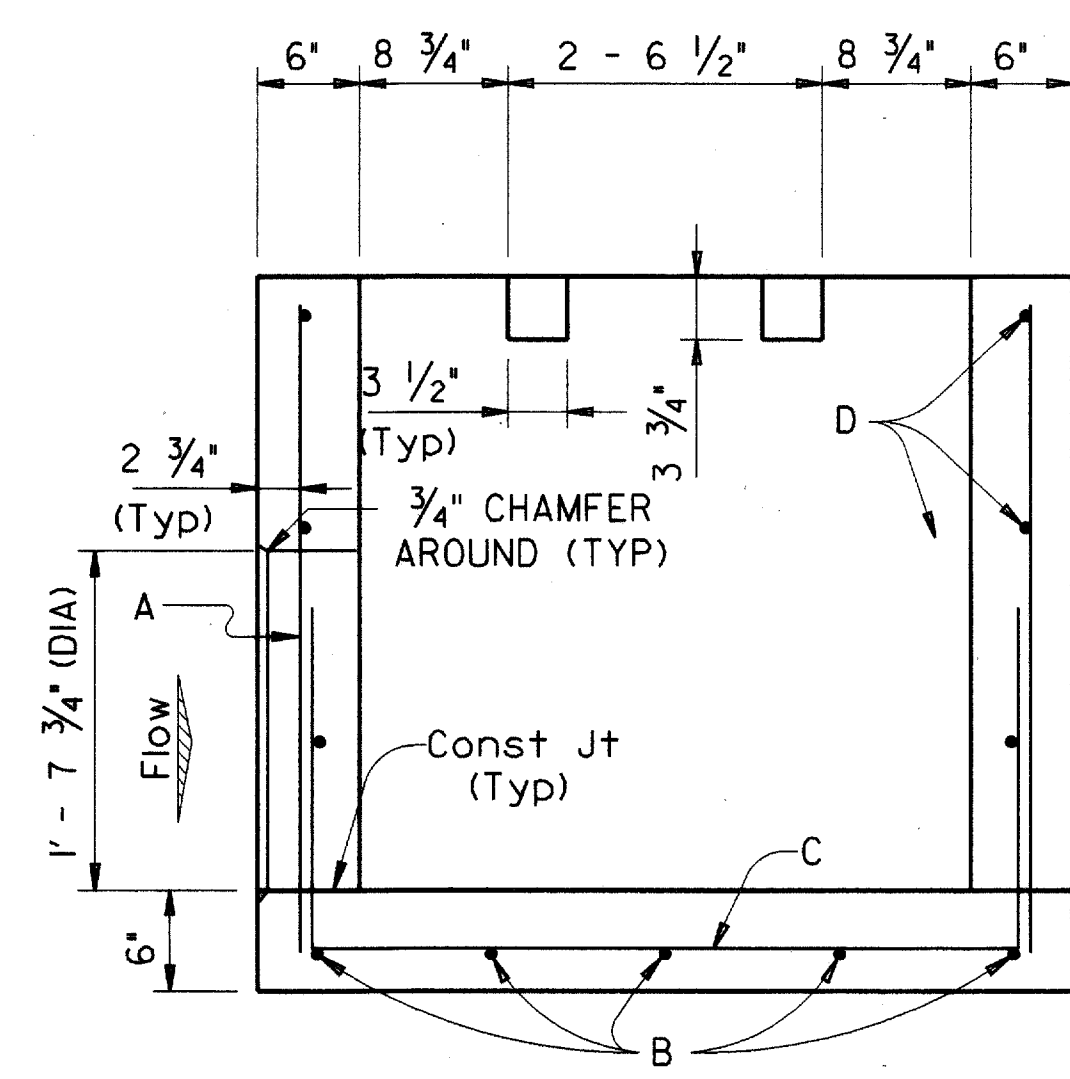


DISCLAIMER: The use of this standard is governed by the Texas Engineering Practice Act. No warranty of any kind is made by TxDOT for any purpose whatsoever. TxDOT assumes no responsibility for the conversion of this standard to other formats or for incorrect results or damages resulting from its use.

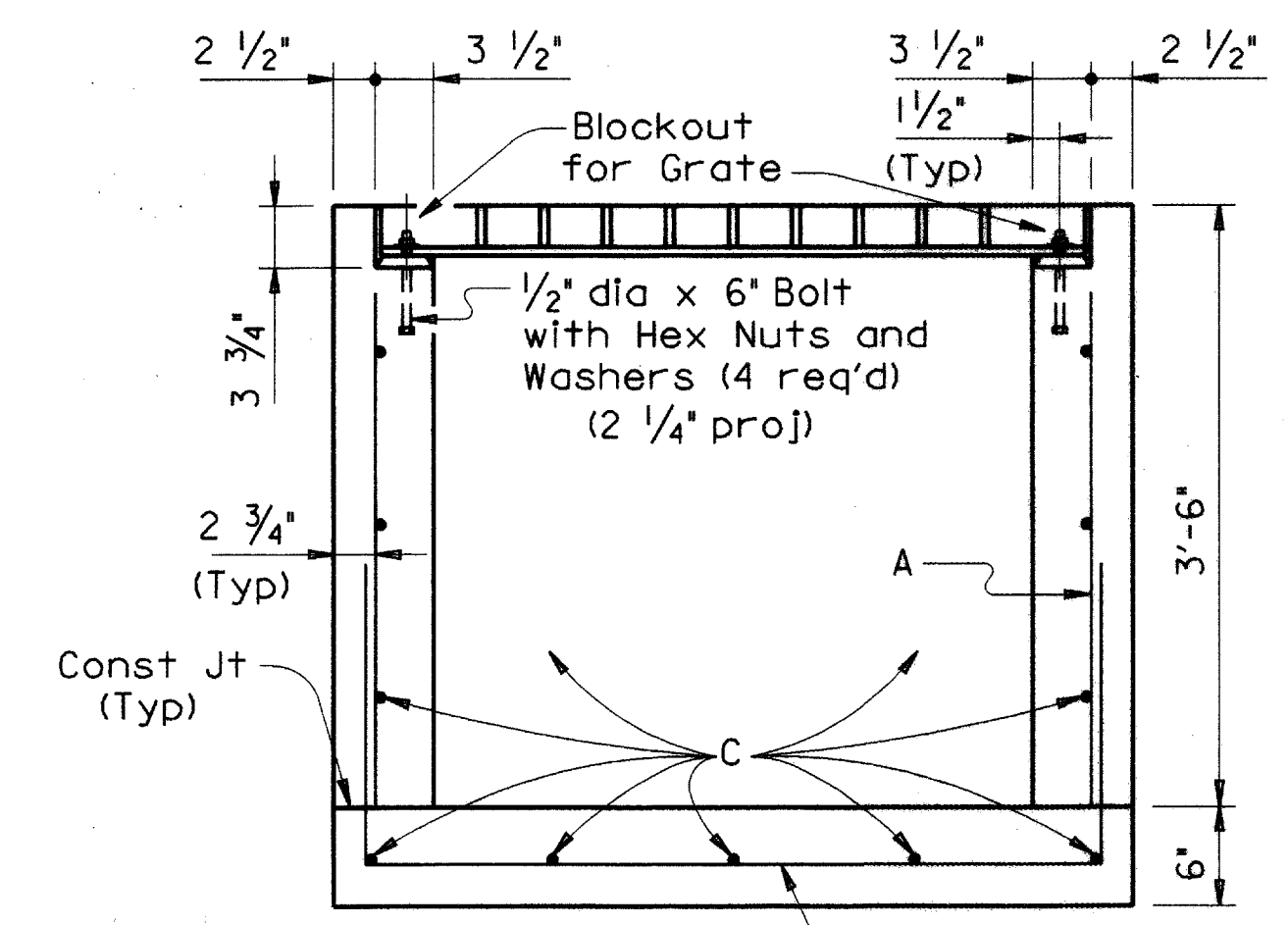


PLAN

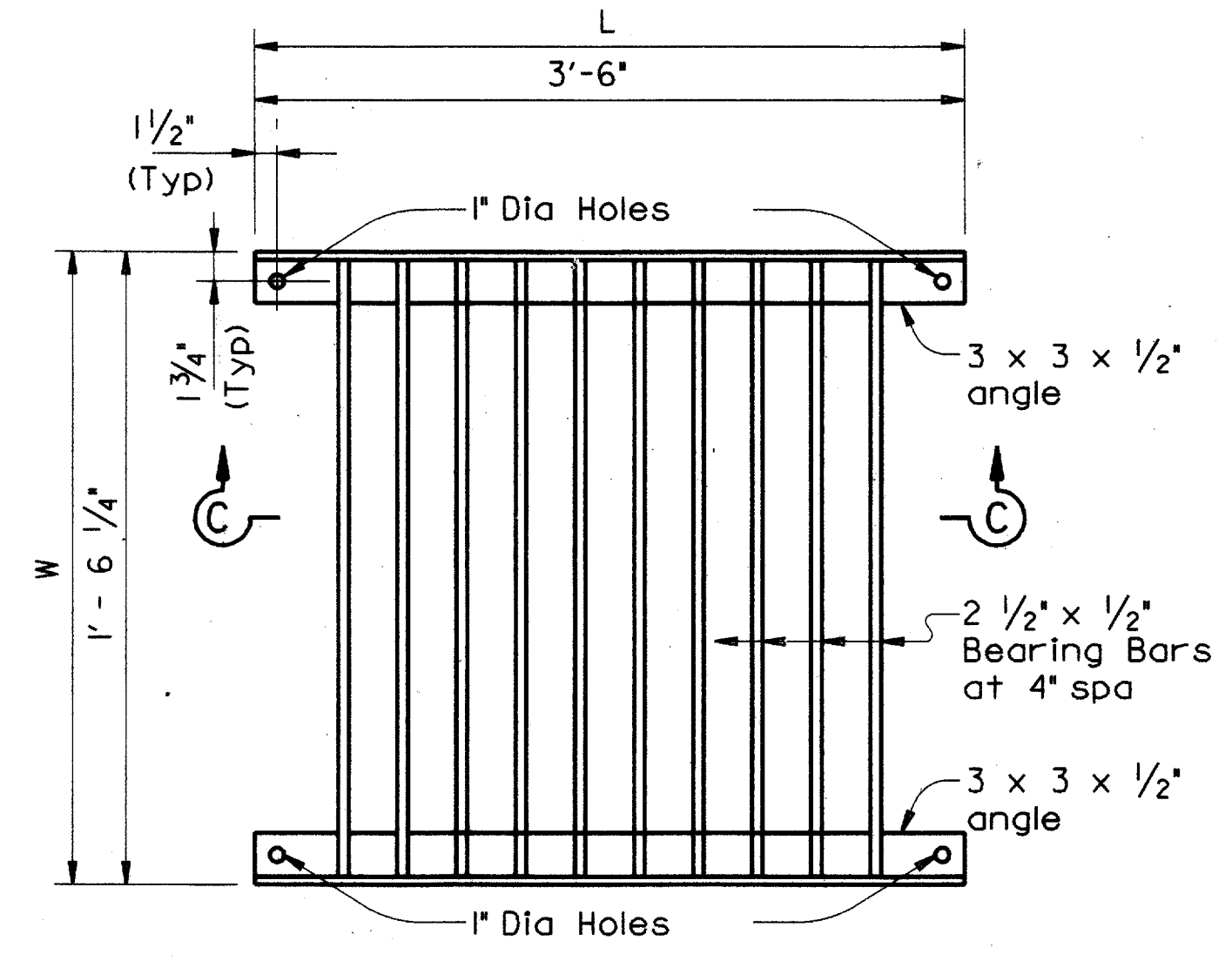


SECTION A-A

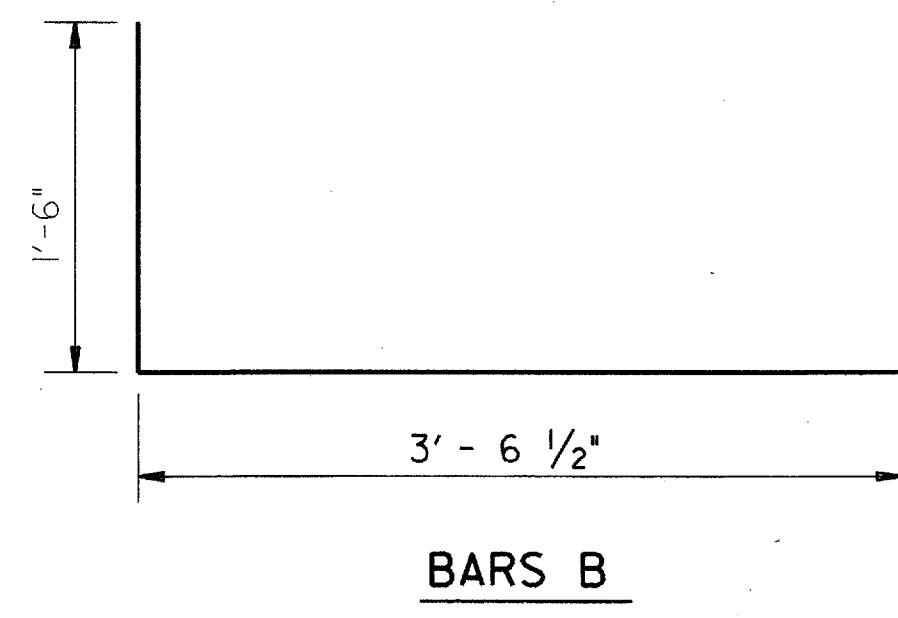
Space Bars A, B, C and D at 12" Max



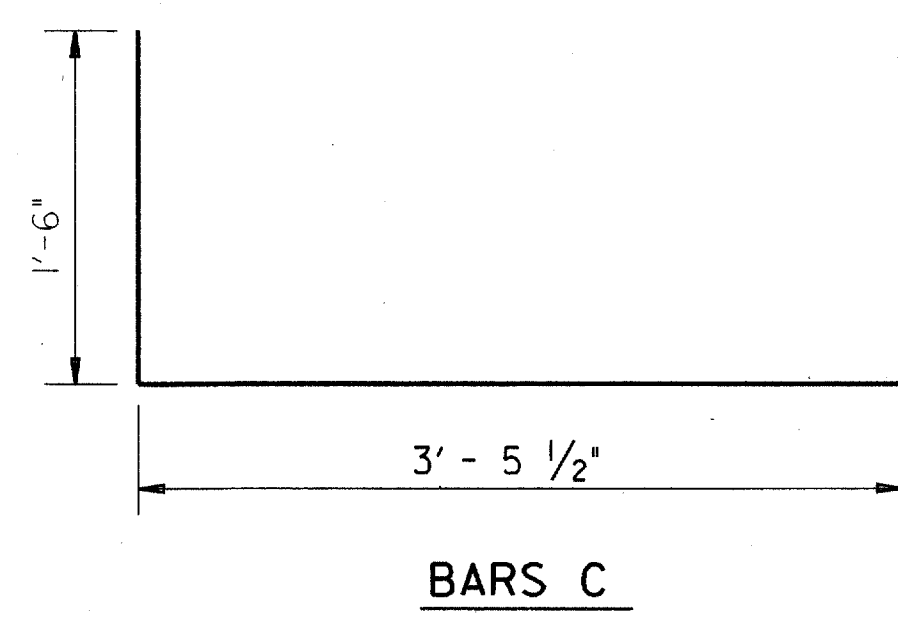
SECTION B-B



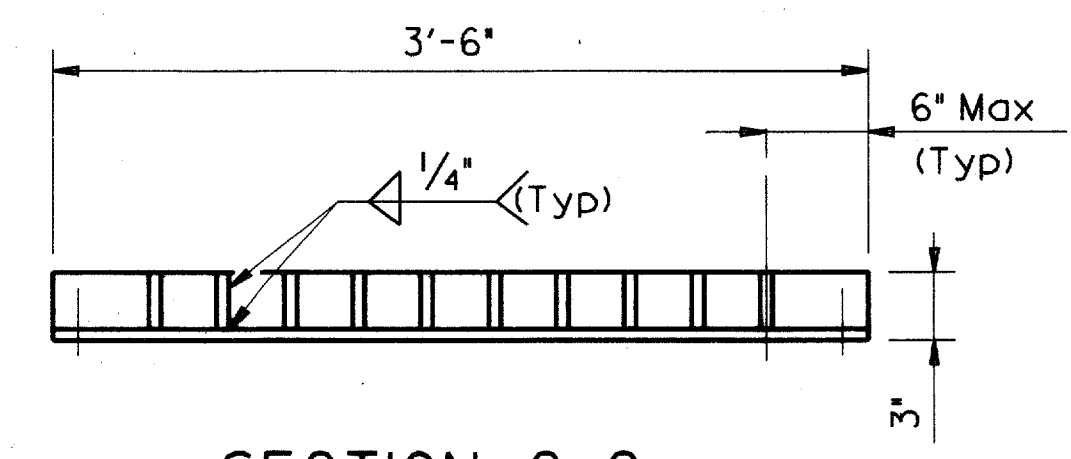
PLAN ~ GRATE



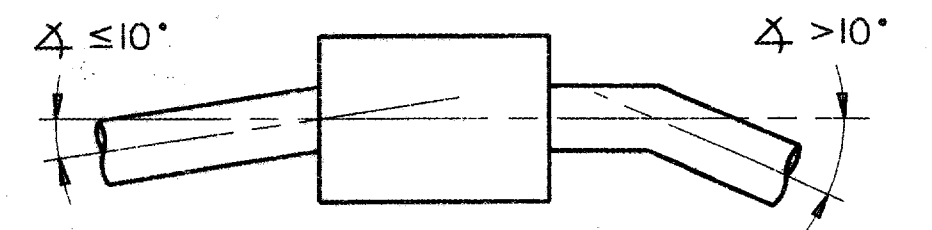
BARS B



BARS C

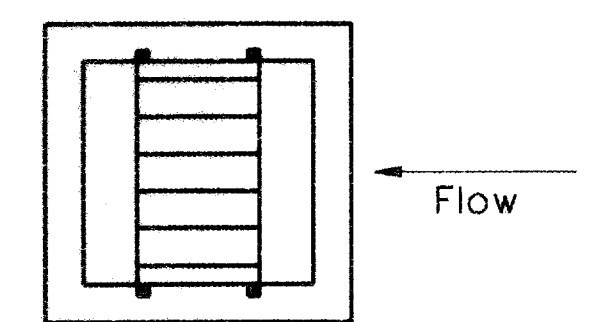


SECTION C-C



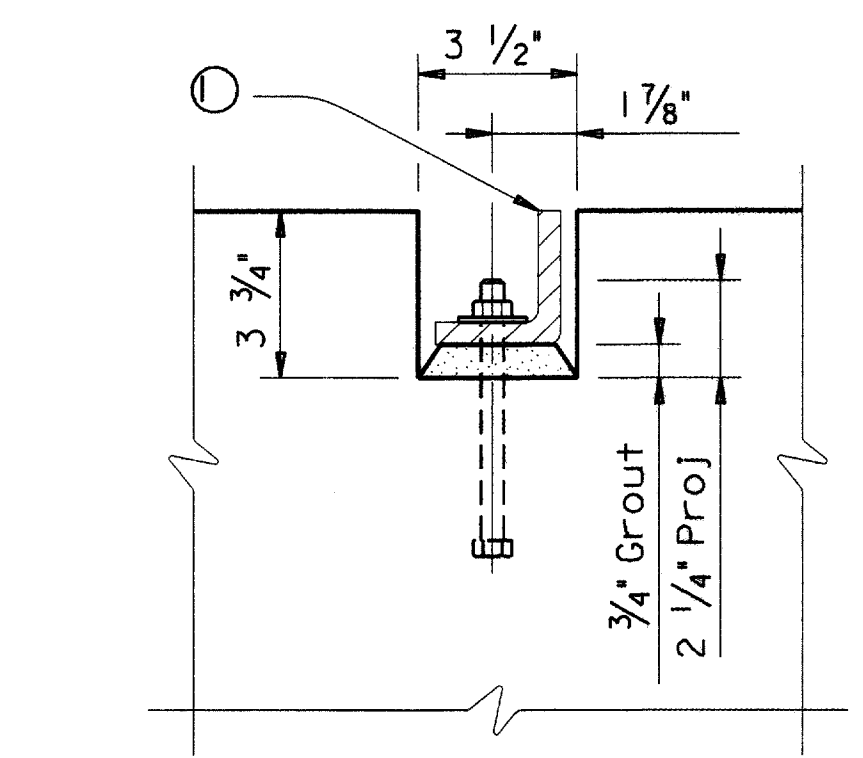
PIPE CONNECTION DETAIL

Connecting pipes should enter within 10° of normal to inlet wall. If necessary, pipe elbow or curved approach alignment should be used to stay within this limit.



GENERAL NOTES:

- Quantities shown hereon are for Contractor's information only. Unless otherwise shown in the plans, payment will be made for each inlet of the Type specified.
- Alternate design drawings bearing the seal of a registered professional engineer will be acceptable for precast construction of the inlets.
- Shop drawings will not be required.
- The Contractor may with the approval of the Engineer furnish inlets of equivalent structural design.
- In areas of conflict between reinforcing steel, blockouts, pipes, anchor belts or other reinforcing steel, the reinforcement shall be bent or adjusted to clear as directed by the Engineer.
- Structural Steel for grates shall conform to the requirements of ASTM Designation A-36 or AISI Designation M1010-M1020.
- All reinforcing steel shall be #4 unless otherwise noted.
- The pipe diameter, 'D', to be used in determining horizontal dimensions of Type 'H' inlet, shall be the largest pipe entering or exiting the inlet which would control that particular wall dimension. For vertical dimension, use largest 'D' or 1'-0" above highest pipe soffit as a minimum dimension.
- All steel components except reinforcing, shall be galvanized after fabrication. Galvanizing damaged during transport or construction shall be repaired in accordance with the specifications.



GRATE MOUNTING DETAIL

Interior angle with 4 ~ 1/2" dia x 6" Bolts, Hex Nuts and Washers

LEVELS DISPLAYED	1
PATH	

Texas Department of Transportation
Bridge Division

**HORIZONTAL INLET
TYPE H**

IL-H

FILE: il-hstde.dgn	DN: TxDOT	CK: TER	DW: MCB	CK: TER/GAF
© TxDOT September 2000	DISTRICT	FEDERAL AID PROJECT		SHEET
REVISIONS				15 OF 17
	COUNTY	CONTROL SECT	JOB	HIGHWAY