

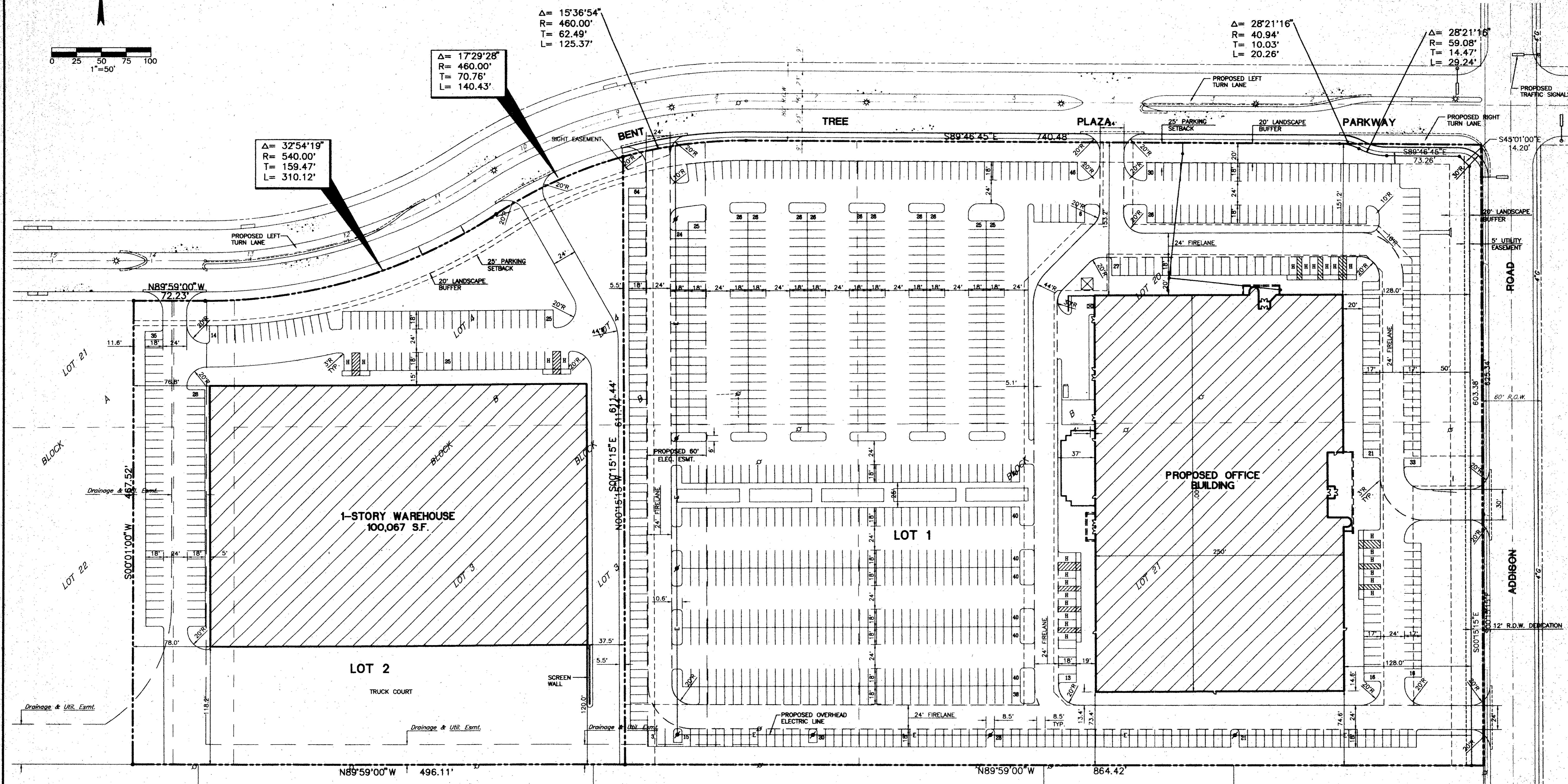
$\Delta = 32^{\circ}54'19''$
 $R = 540.00'$
 $T = 159.47'$
 $L = 310.12'$

$\Delta = 17^{\circ}29'28''$
 $R = 460.00'$
 $T = 70.76'$
 $L = 140.43'$

$\Delta = 15^{\circ}36'54''$
 $R = 460.00'$
 $T = 62.49'$
 $L = 125.37'$

$\Delta = 28^{\circ}21'16''$
 $R = 40.94'$
 $T = 10.03'$
 $L = 20.26'$

$\Delta = 28^{\circ}21'16''$
 $R = 59.08'$
 $T = 14.47'$
 $L = 29.24'$



LOT 2 SITE AREA SUMMARY

NET AREA:	5.85 ACRES
LANDSCAPE AREA (20.1%):	1.18 ACRES
REGULAR PARKING:	123 SPACES
HANDICAP PARKING:	4 SPACES
TOTAL PARKING:	127 SPACES
TOTAL AREA:	5.85 ACRES

- LEGEND**
- EXISTING POWER POLE
 - EXISTING WATER VALVE
 - ⊕ EXISTING FIRE HYDRANT
 - ⊛ EXISTING LIGHT POLE
 - S—W— EXISTING WATERLINE
 - S—WW— EXISTING WASTEWATER LINE
 - T— EXISTING UNDERGROUND TELEPHONE LINE
 - G— EXISTING GAS MAIN
 - LOT LINE
 - PROPOSED POWER POLE

LOT 1 SITE AREA SUMMARY

GROSS AREA:	12.40 ACRES
R.O.W. AREA:	0.20 ACRES
NET AREA:	12.25 ACRES
LANDSCAPE AREA (21.0%):	2.57 ACRES
REGULAR PARKING:	1003 SPACES
HANDICAP PARKING:	20 SPACES
TOTAL PARKING:	1023 SPACES
TOTAL NET AREA:	12.25 ACRES