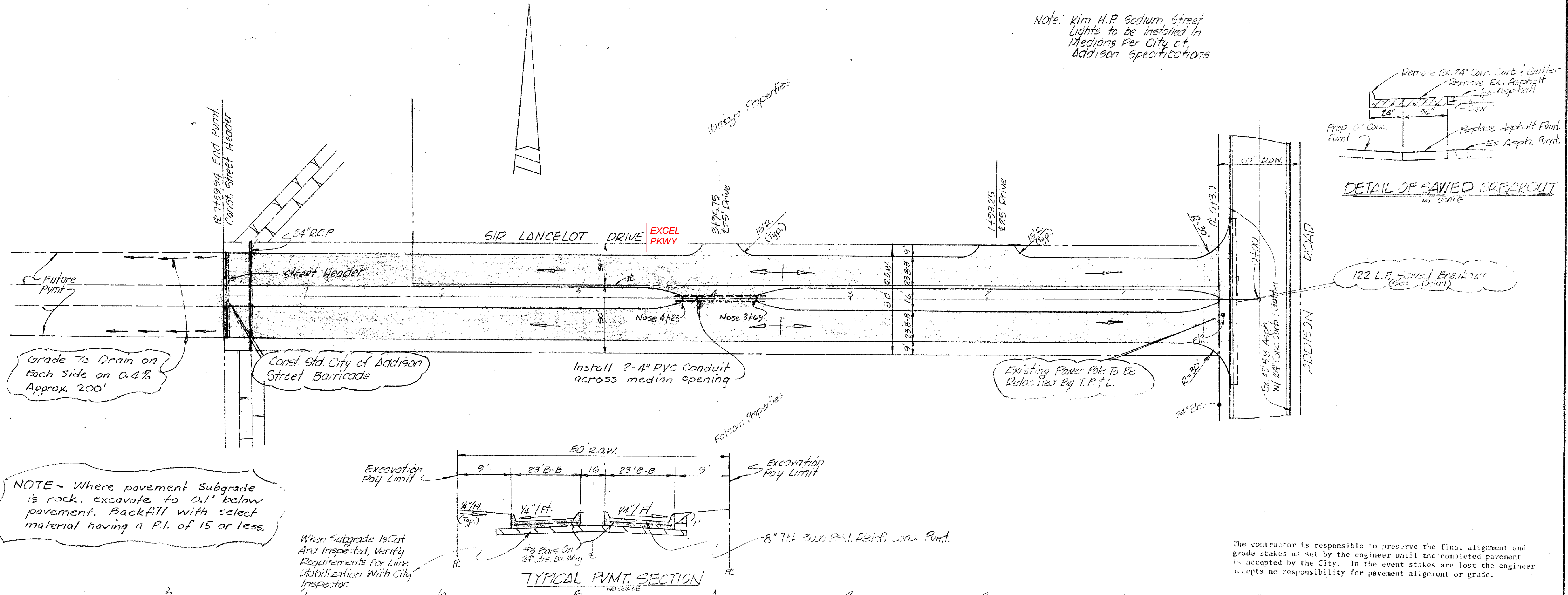


Note: Kim H.P. Godwin Street Lights to be Installed in Medians Per City of Addison Specifications



Grade To Drain on Each Side on 0.4% Approx. 200'

Const. Std. City of Addison Street Barricade

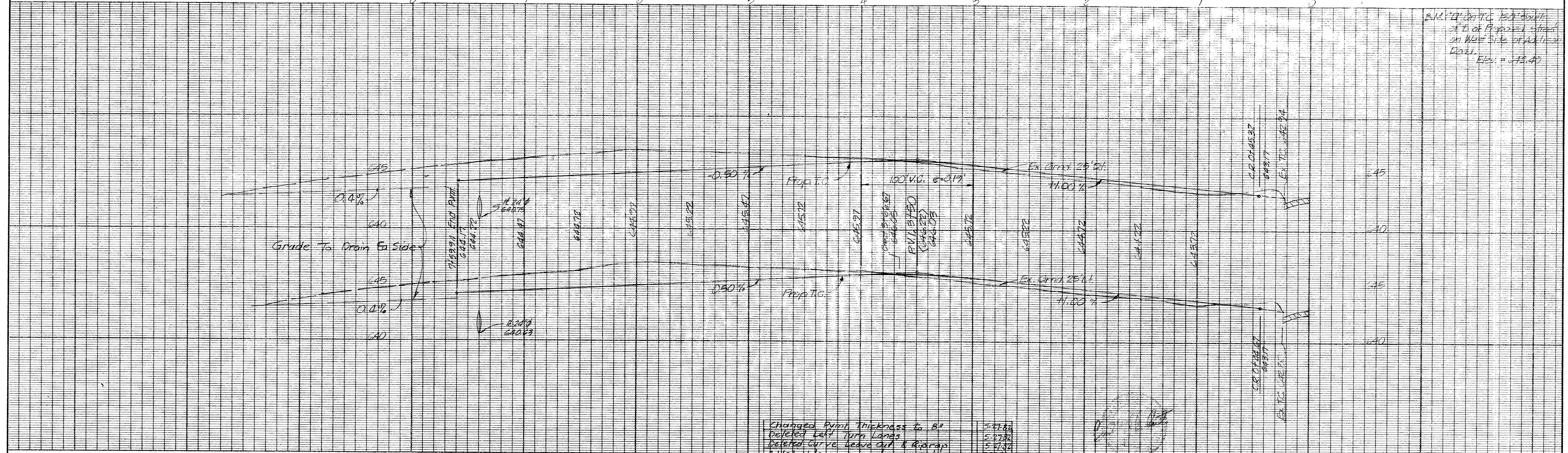
Install 2-4" PVC Conduit across median opening

Existing Power Pole To Be Relocated by T.P.F.L.

NOTE - Where pavement subgrade is rock, excavate to 0.1' below pavement. Backfill with select material having a P.I. of 15 or less.

When subgrade is cut and inspected, verify requirements for line stabilization with city inspector.

The contractor is responsible to preserve the final alignment and grade stakes as set by the engineer until the completed pavement is accepted by the city. In the event stakes are lost the engineer accepts no responsibility for pavement alignment or grade.



Revision	Date	revision	date
Changed R of Addison Rd to 30'	6-10-82	ADD SAWED BREAKOUT DETAIL & 30' ENTRANCE RADIUS	10-30-81
Added 2-4" PVC Conduit at med. open.	6-10-82	Extend Pmnt.	12-18-81
		Revised Entrance Drive	1-15-82
		Changed R.O.W. & Street Width	1-27-82
		Grade To Drain Notes	5-27-82

**arp** ACREY ROBERTS PIERSON INC.  
DALLAS (214) 699-7916  
consulting engineers

PAVING PLAN  
VANTAGE PROPERTIES  
ADDISON, TEXAS

design	drawn	date	scale	notes
ARP	TVE	SEP 10	1"=40' (PLAN)	ARP

sheet 1/1

E DRAW PAGE 250