

**GENERAL NOTES**

- Sanitary Sewer to be PVC 30" 35 Sewer Pipe
- Water Mains to be PVC 5" 12 18 Water Pipe
- Fire Hydrants to be Mueller Centurian Only
- Air Test Acceptable Per City of Dallas Standard
- All Valves to be Mueller

NOTE: Verify Elevations in Field Prior to Construction

NOTE: All Sanitar. Sewer Manholes to be Poured in Place

• ~ Indicates Test Borings Location

**Boring Legend**

- A = Reddish Brown sand
- B = Dark Brown Clay
- C = Tan Clay
- D = Tan Weathered Limestone
- E = Gray Limestone
- F = Brown Clay

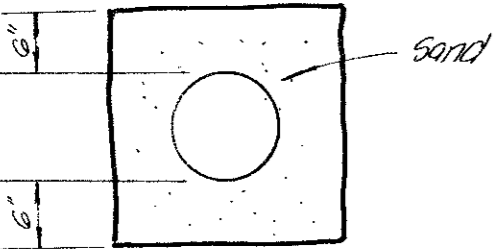
0100 "A" = Ex. 8" San Sew. Const. 4.0' Dia. M.H. Over Ex. 8" San Sew.

3150 "A" Const. 4.0' Dia. M.H.

7170 "A" Const. 4.0' Dia. M.H.

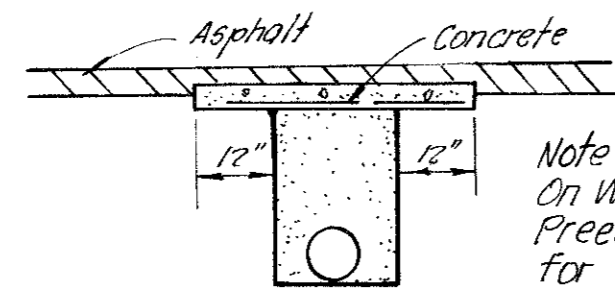
Prop. Bldg. F.F. 622.70

9190 "A" Const. 4.0' Dia. M.H. Over Ex. 8" San Sew.



**TYPICAL EMBEDMENT FOR WATER & SANITARY SEWER**

No Scale



**DETAIL OF CONCRETE CAP FOR OPEN CUT**

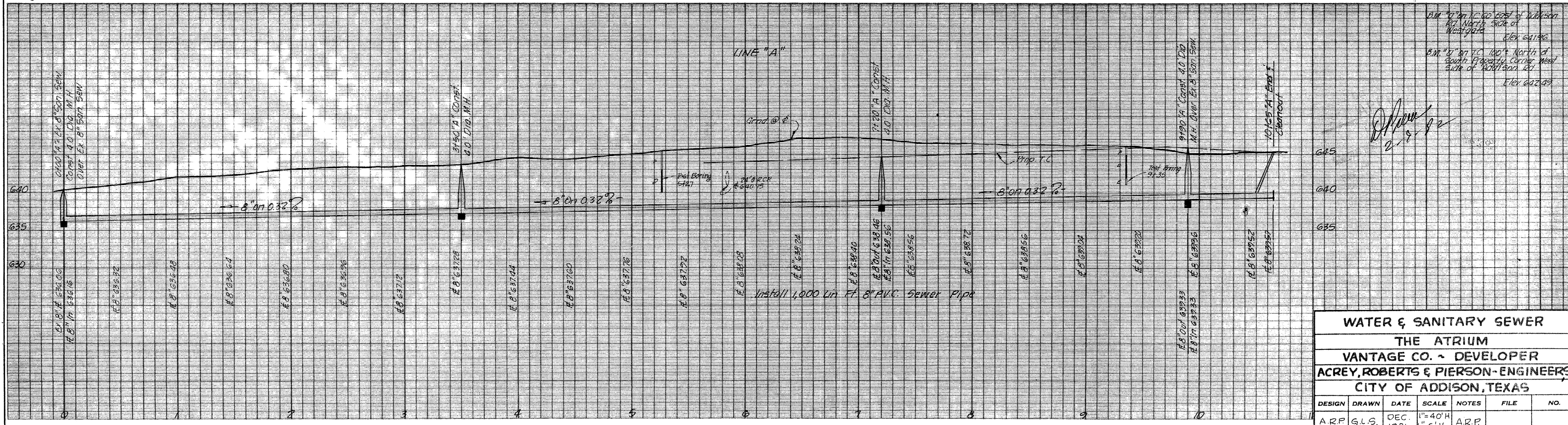
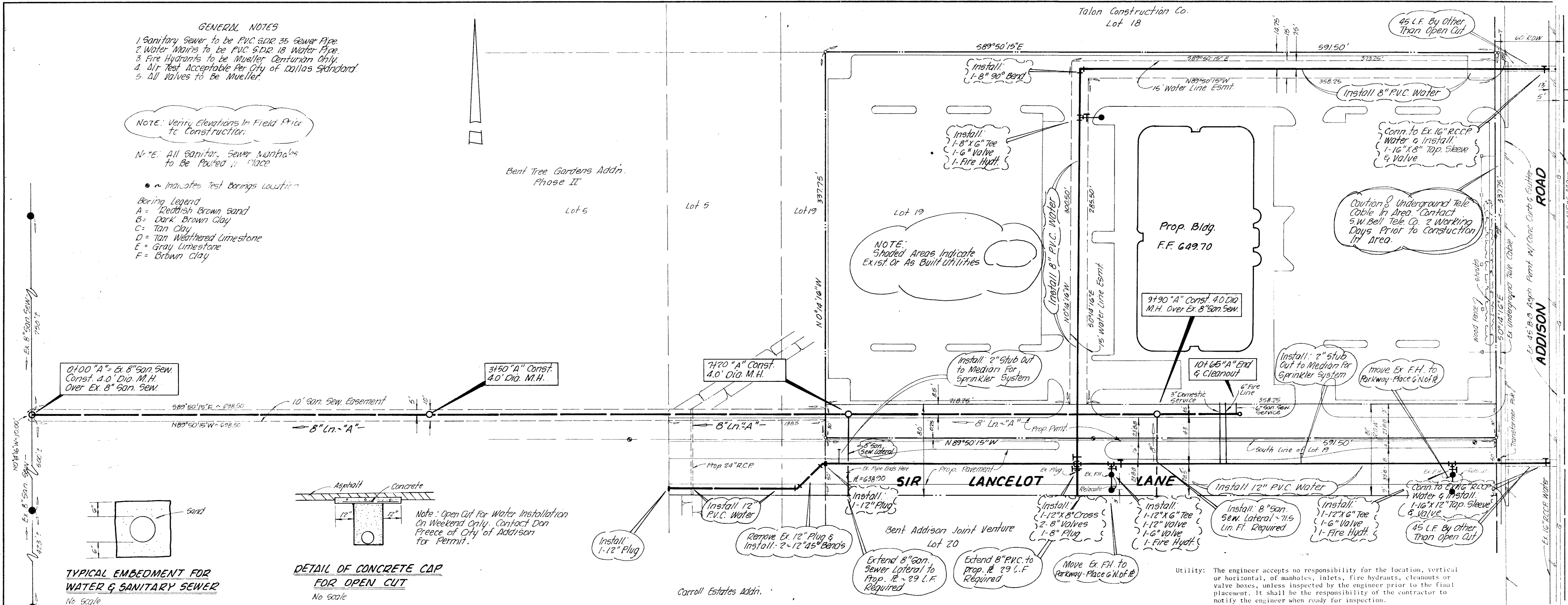
No Scale

Note: Open Cut for Water Installation on Weekend Only. Contact Dan Preece of City of Addison for Permit.

NOTE: Shaded Areas Indicate Exist Or As Built Utilities

Caution: Underground Tele Cable In Area. Contact S.W. Bell Tele. Co. 2 Working Days Prior to Construction in Area.

Utility: The engineer accepts no responsibility for the location, vertical or horizontal, of manholes, inlets, fire hydrants, cleanouts or valve boxes, unless inspected by the engineer prior to the final placement. It shall be the responsibility of the contractor to notify the engineer when ready for inspection.



<b>WATER &amp; SANITARY SEWER</b>						
<b>THE ATRIUM</b>						
<b>VANTAGE CO. - DEVELOPER</b>						
<b>ACREY, ROBERTS &amp; PIERSON - ENGINEERS</b>						
<b>CITY OF ADDISON, TEXAS</b>						
DESIGN	DRAWN	DATE	SCALE	NOTES	FILE	NO.
ARP	GLS	DEC. 1981	1"=40'H 1"=6'V	ARP		