

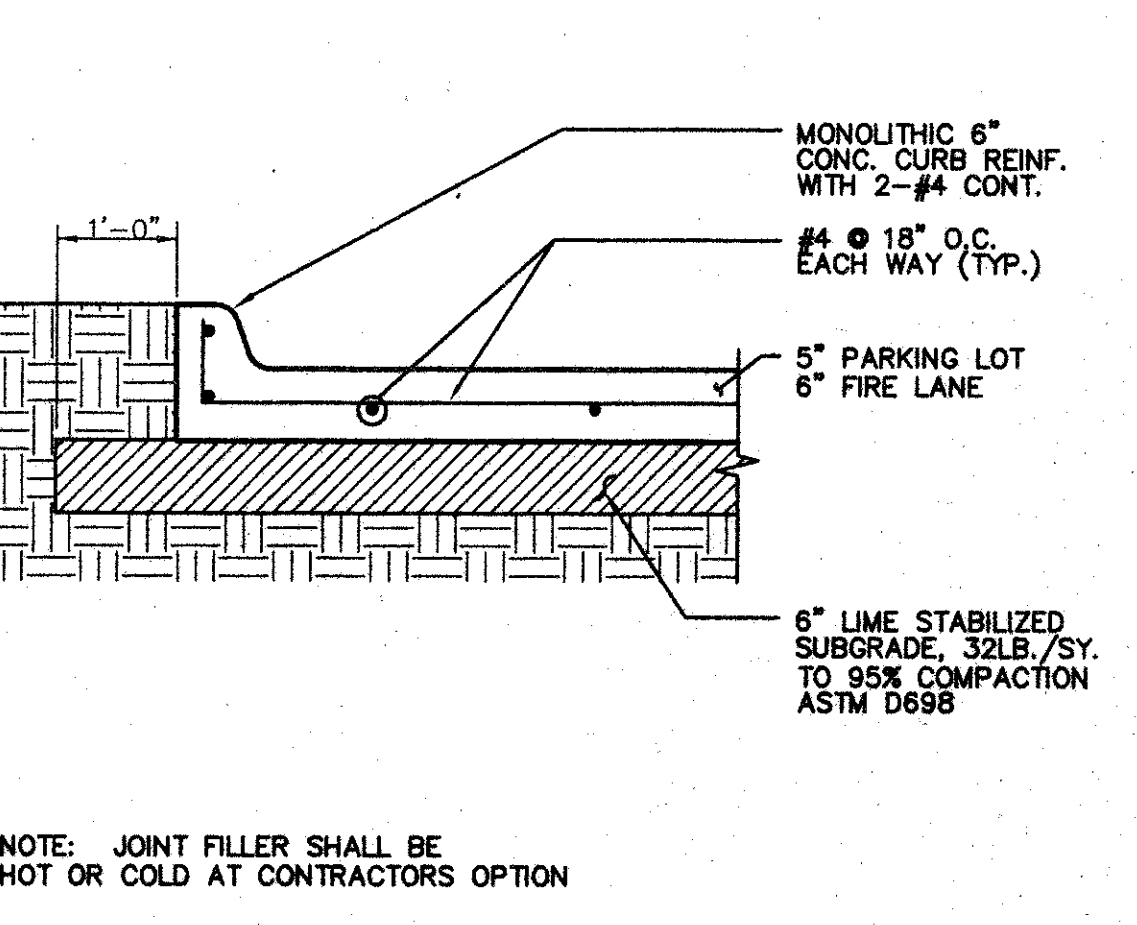
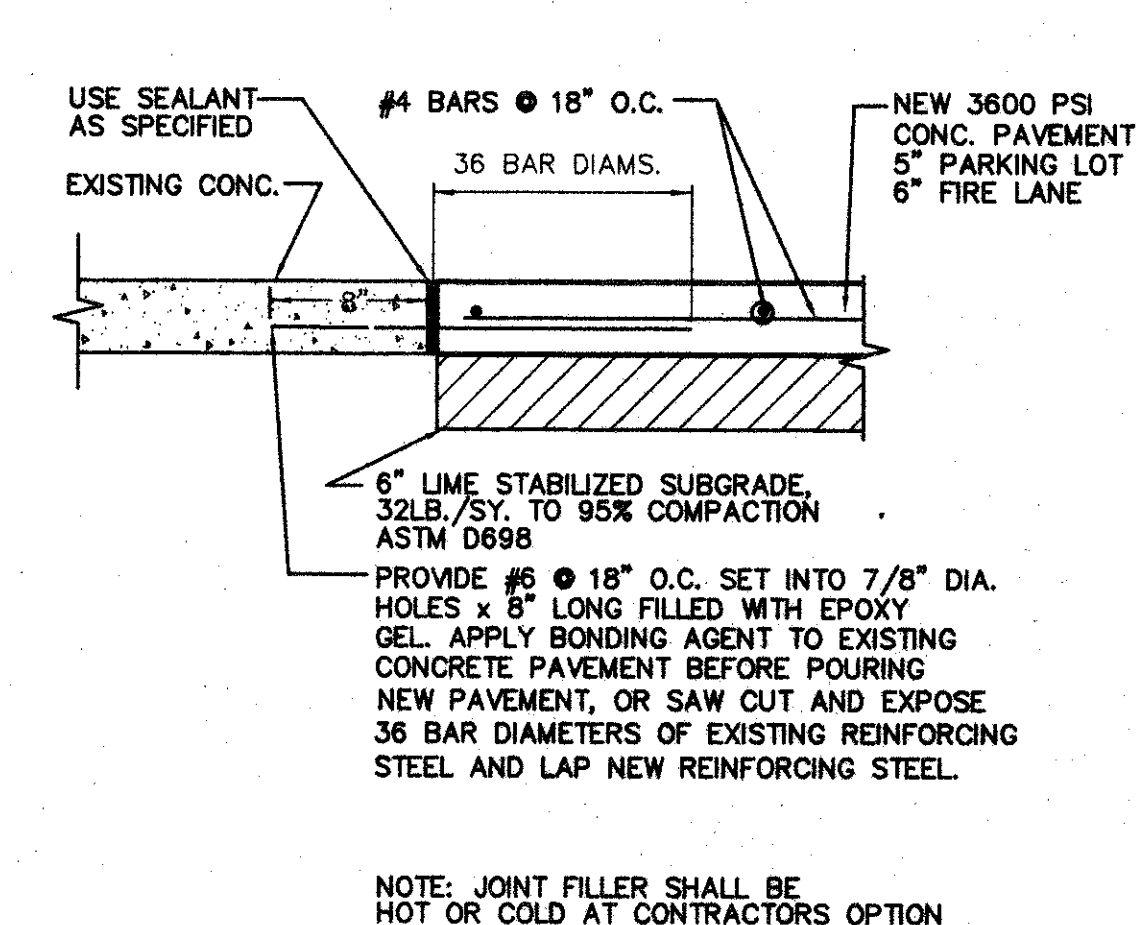
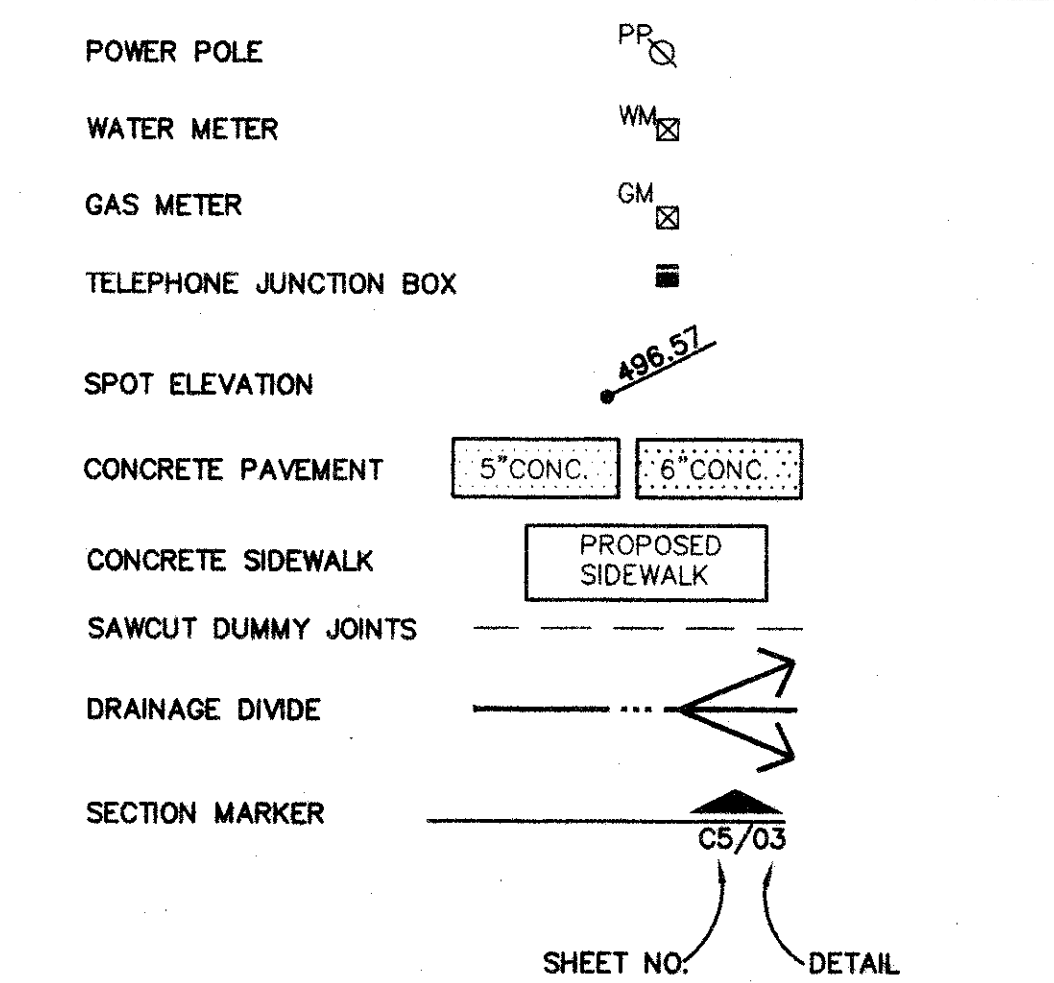
GENERAL NOTES

- IT IS THE RESPONSIBILITY OF THE CONTRACTOR TO SUPPLY AND INSTALL ALL MATERIALS SO AS TO MEET OR EXCEED PROJECT SPECIFICATIONS STATE CODES, AND CITY OF ADDISON STANDARDS AND SPECIFICATIONS.
- THE CONTRACTOR SHALL VERIFY ALL CONDITIONS AT THE JOB SITE AND NOTIFY THE OWNER'S REPRESENTATIVE OF ANY OMISSIONS, DISCREPANCIES, OR DIMENSIONAL ERRORS PRIOR TO BEGINNING OR FABRICATING ANY WORK. OTHERWISE THE CORRECTIONS (AND ASSOCIATED COST), WILL BE THE RESPONSIBILITY OF THE CONTRACTOR.
- DIMENSIONS, LOCATIONS SHOWN, OR NOTES MARKED "VERIFY" ARE TO BE VERIFIED IN THE FIELD BY THE CONTRACTOR. REPORT ANY DISCREPANCIES TO THE OWNER'S REPRESENTATIVE PRIOR TO CONSTRUCTION.
- ALL DEMOLITION AND EXCAVATED MATERIALS SHALL BE LEGALLY DISPOSED OFF THE SITE BY THE GENERAL CONTRACTOR.
- IN THE EVENT THAT UNCHARTED UTILITIES OR OTHER UNFORESEEN FIELD CONDITIONS REQUIRE MODIFICATIONS OF THE DRAWINGS, THE CONTRACTOR SHALL OBTAIN THE APPROVAL OF THE OWNER'S REPRESENTATIVE BEFORE PROCEEDING WITH THE WORK.
- THE CONTRACTOR SHALL BE RESPONSIBLE FOR PAYING AND OBTAINING PERMITS FROM THE CITY, STATE OR OTHER REGULATORY AGENCIES TO PERFORM ALL WORK.
- ALL NEW CONCRETE PAVING SHALL HAVE A MINIMUM COMPRESSIVE STRENGTH OF 3600 P.S.I., AT 28 DAYS. CONCRETE MIX DESIGN SHALL BE PROPORTIONED WITH A MINIMUM OF 5% AIR ENTRAINMENT AND A MAXIMUM SLUMP OF 4 INCHES. COPIES OF THE PROPOSED MIX DESIGN SHALL BE SUBMITTED IN ACCORDANCE WITH THE SPECIFICATIONS, FOR APPROVAL, BEFORE PROCEEDING WITH WORK.
- UNLESS NOTED OTHERWISE, FOR ALL CONCRETE SIDEWALKS, PROVIDE TOOLED SCORED JOINTS AT 5 FT. O.C. AND EXPANSION JOINTS WITH FILLERS AT 20 FT. O.C.
- UNLESS OTHERWISE NOTED PROVIDE SAWCUT DUMMY JOINTS @ 15' O.C.E.W. FOR ALL CONCRETE PAVING.
- REFER TO GEOTECHNICAL INVESTIGATION FOR PREPARATION OF SUBGRADE & BUILDING PAD..
- REFER TO ARCHITECTURAL PLANS, FOR LANDSCAPE REQUIREMENTS. AS A MINIMUM PROVIDE HYDROMULCHED BERMUDA GRASS AT ALL GRADED AREAS NOT COVERED WITH PAVEMENT.
- SIDESLOPES MAY BE PROTECTED BY ANY MEANS APPROVED BY THE OWNER TO INCLUDE BUT NOT TO BE LIMITED TO: "GRASSCORETE", "GEOROCK", "GRASSPAVE", GUNITE, OR REINFORCED CONCRETE RIP-RAP. THE CONTRACTOR SHALL ISSUE A 2 YEAR WARRANTY FOR WORKMANSHIP AND MATERIAL OF THE METHOD SELECTED.

SUMP PUMP GENERAL NOTES

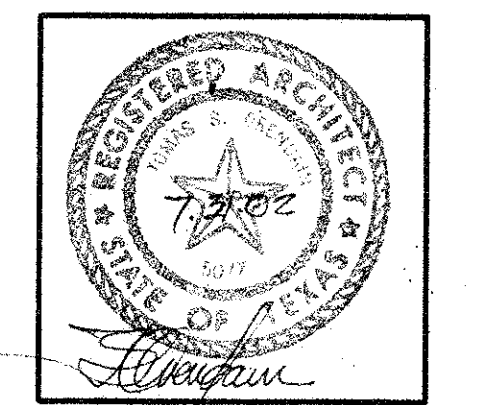
- FURNISH AND INSTALL 24" AND 36" R.C.P. FOR SEDIMENT TRAP AND SUMP PUMP PIT, POUR 6" CONCRETE BOTTOMS, PROVIDE A CONCRETE COVER, REINFORCED TO ACCOMMODATE AN AUTOMOBILE WHEEL LOAD FOR THE SUMP PUMP PIT.
- FURNISH AND INSTALL ONE SUBMERSIBLE NON-CLOG WASTEWATER PUMP. THE PUMP SHALL BE EQUIPPED WITH A 2 H.P. SUBMERSIBLE ELECTRIC MOTOR CONNECTED FOR OPERATION ON 240 VOLTS, 3 PHASE, 60 HERTZ, 4 WIRE SERVICE, WITH 20 FEET OF SUBMERSIBLE CABLE (SUBCAB) SUITABLE FOR SUBMERSIBLE PUMP APPLICATIONS. THE POWER CABLE SHALL BE SIZED ACCORDING TO NEC AND IECA STANDARDS AND ALSO MEET WITH P-MSHA APPROVAL. THE PUMP SHALL BE SUPPLIED WITH A MATING CAST IRON 3 INCH DISCHARGE CONNECTION AND BE CAPABLE OF DELIVERING 390 GPM AT 2.8 TDH. AN ADDITIONAL POINT ON THE SAME CURVE SHALL BE 320 GPM AT 8.2 FEET TOTAL HEAD. SHUT OFF HEAD SHALL 32 FEET (MINIMUM). THE PUMP SHALL BE FITTED WITH 8 FEET OF 3/16 INCH LIFTING CHAIN OR #304 STAINLESS STEEL CABLE. THE WORKING LOAD OF THE LIFTING SYSTEM SHALL BE 50% GREATER THAN THE PUMP UNIT WEIGHT. THE PUMP SHALL BE FLYGT MODEL C-3085-43B IMPELLER OR AN APPROVED EQUAL.
- FURNISH AND INSTALL A NEMA# 12 ELECTRICAL CONTROL PANEL, EQUIPPED WITH POWER MONITOR, SURGE ARRESTOR AND RUN LIGHT. SEE ELECTRICAL DRAWINGS FOR POWER TO THE PUMP.

AS - BUILT DRAWING
 DATE: 8-23-01
 T.S. OREDAIN ASSOC., INC.
 Architecture • Planning • Interior Design
 16835 Addison Road, Suite 101
 Addison, Texas 75001 972-250-0119



AMO
 16835 ADDISON ROAD
 SUITE 101
 ADDISON, TX 75001
 FAX: 972-250-3197

ADDISON PARK CENTRE OFFICE/TECH./FLEX. PHASE 1
 16835 ADDISON ROAD ADDISON, TEXAS



to
 T.S. Oredain Associates Inc.
 Architecture • Planning • Interior Design

16835 Addison Road
 Suite 101
 Addison, Texas 75001
 (972) 250-0119

JOB: 8396 DATE: 2-25-2000
 DRAWN: CHECKED:

Date	Issued For / Description
11-1-99	T.D.L.R.
2-25-2000	100% ISSUED FOR CONSTRUCTION
6-9-2000	GENERAL REVISION

GRADING AND PAVEMENT PLAN

C-1