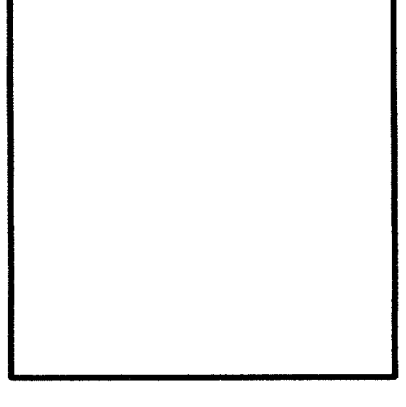


AMO  
16835 ADDISON ROAD  
SUITE 101  
ADDISON, TX 75001  
TEL: 972-250-0119  
FAX: 972-250-1517

ADDISON PARK CENTRE  
OFFICE/TECH./FLEX.  
PHASE 1  
16835 ADDISON ROAD ADDISON, TEXAS

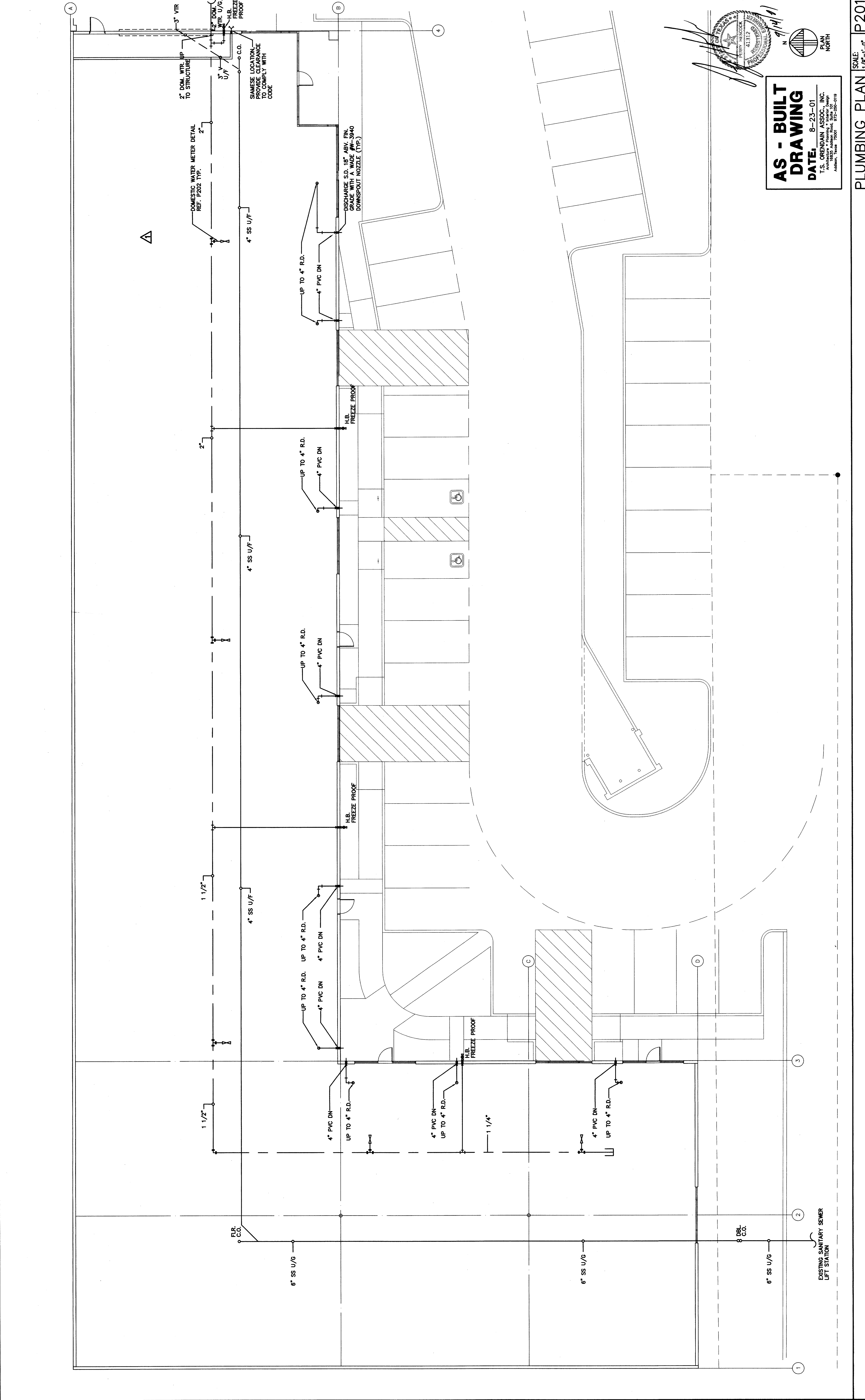


T.S. Overduin Associates Inc.  
Architect • Planning • Interior Design  
16835 Addison Road  
Suite 101  
Addison, Texas 75001  
(972) 250-0119  
DATE: 2/25/2000  
CHECKED:  
DRAWN:  
US: 83396

Date	Issued For / Description	By
8-17-98	PERMIT ISSUE	
11-1-99	T.D.L.R.	
2-25-00	100% ISSUED FOR CONSTRUCTION	
6-9-2000	GENERAL REVISION	

PLUMBING PLAN  
P-2

WTR. METER DETAIL SCALE: 1/8"=1'-0" P202



**AS - BUILT  
DRAWING**  
DATE: 8-23-01  
T.S. OVERDUIN ASSOC. INC.  
Architect • Planning • Interior Design  
16835 Addison Road  
Suite 101  
Addison, Texas 75001  
TEL: 972-250-0119  
FAX: 972-250-1517



PLUMBING PLAN SCALE: 1/8"=1'-0" P201