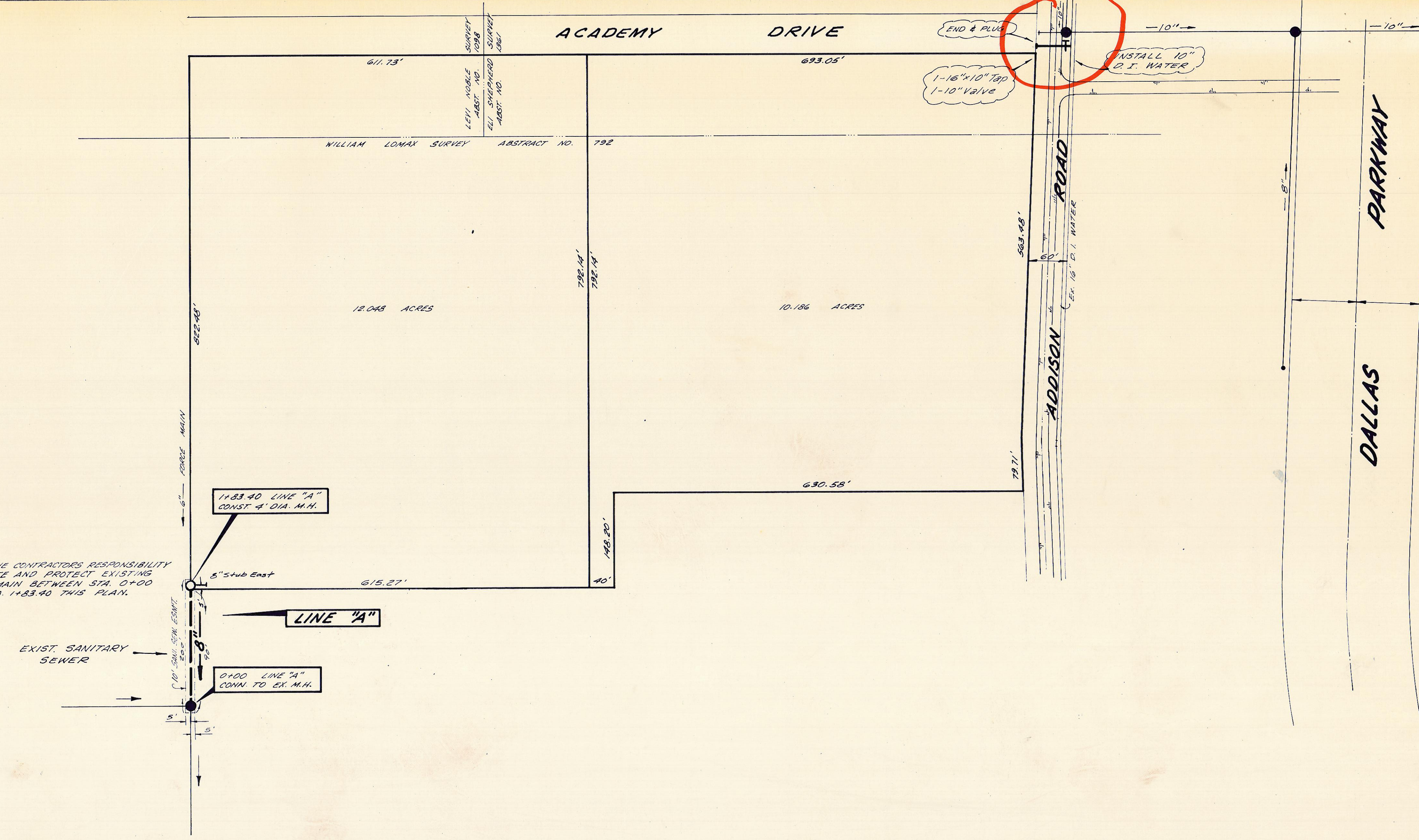


SCALE: 1"=100'



NOTE: IT IS THE CONTRACTOR'S RESPONSIBILITY TO LOCATE AND PROTECT EXISTING FORCE MAIN BETWEEN STA. 0+00 AND STA. 1+83.90 THIS PLAN.

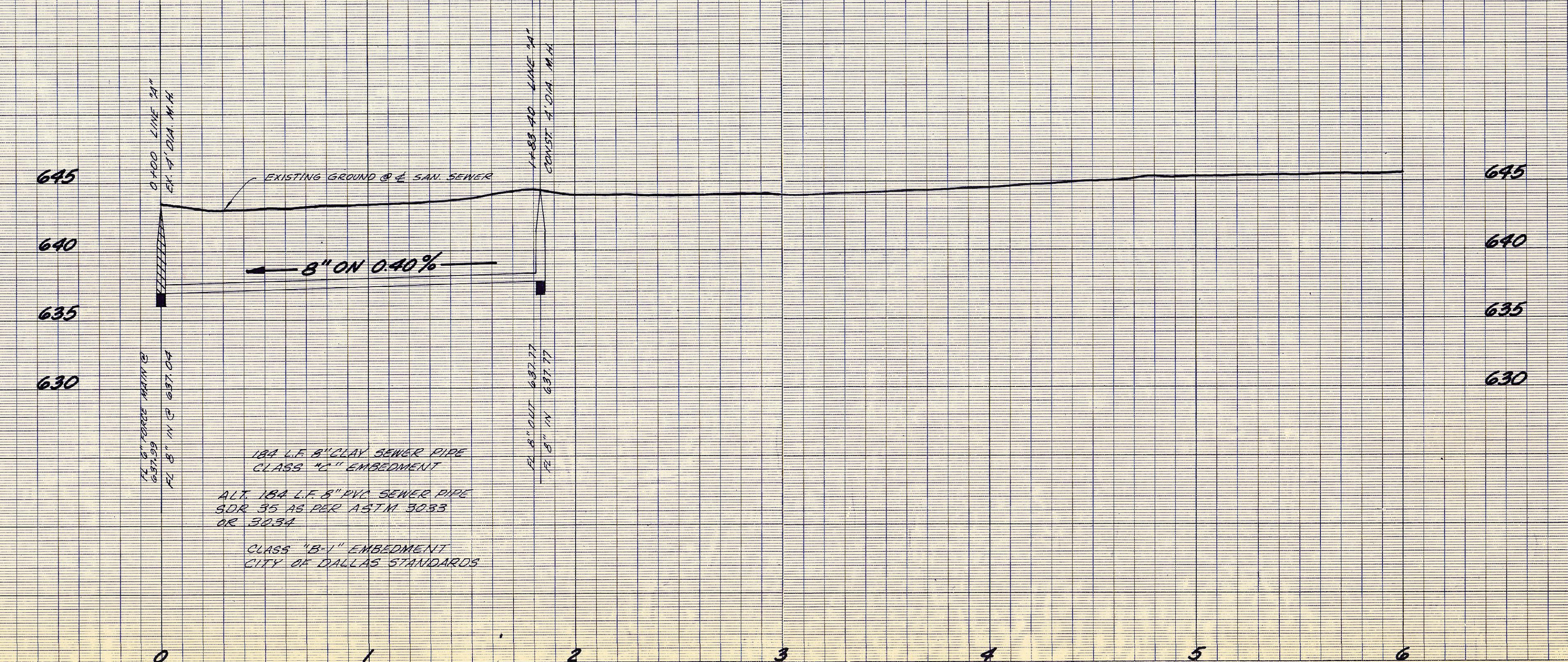
EXIST. SANITARY SEWER

1+83.90 LINE "A"
CONST. 4" DIA. M.H.

LINE "A"

0+00 LINE "A"
CONN. TO EX. M.H.

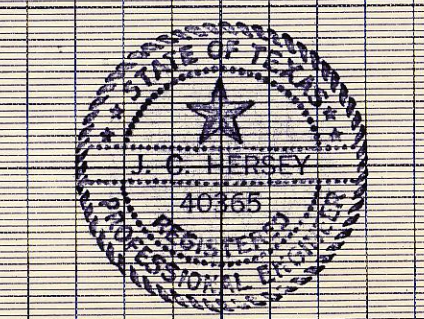
LINE "A"



NOTE: IT WILL BE THE CONTRACTOR'S RESPONSIBILITY TO VERIFY THE LOCATION AND TO PROTECT ALL EXISTING UTILITIES.

BENCH MARK: NAIL IN TOP WEST SIDE OF DOOLEY ROAD AND APPROX. 230' NORTH OF SOUTHWEST CORNER OF THE TEXAS CHRISTIAN ACADEMY TRACT. PLAN 660.44

18" L.F. 8" CLAY SEWER PIPE
CLASS "C" EMBEDMENT
ALT. 18" L.F. 8" PVC SEWER PIPE
SDR 35 AS PER ASTM 3033
OR 3034
CLASS "B-1" EMBEDMENT
CITY OF DALLAS STANDARDS



WATER & SEWER PLANS
BENT TREE TOWERS APARTMENTS
ADDISON ROAD
ADDISON WATER UTILITIES
CITY OF ADDISON, TEXAS

DESIGN	DRAWN	DATE	SCALE	NOTES	FILE	NO.
T.F.O.	T.D.K.	AUG. '77	1"=6' V	T.F.O.		

Handwritten notes in red ink: '1-16\"/>