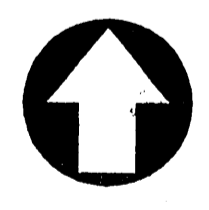


dietz  
engineering



Signing Date: 02-28-01  
 811 e plano parkway  
 suite 109  
 plano texas 75074  
 voice 972 633-8867  
 fax 972 633-1327  
 Drawn By: LL  
 Checked By: RDD  
 Revisions:  
 No. Date Description

**TRINITY CHRISTIAN ACADEMY**  
 EXISTING SITE CONDITIONS  
 PLAN VIEW  
 for the  
 City of Addison, Texas



NORTH

24"x36" Scale: 1" = 20'  
 11"x17" Scale: 1" = 40'  
 Vertical Scale: NA

Project Number:  
 Issue Date: 28 FEB 2001

Sheet Title:  
**EX. CONDITIONS**

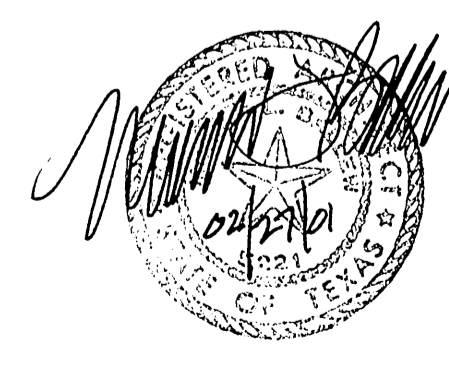
Sheet No.:

**C1.01**

4501 TCA SITE  
 IMPROVEMENTS  
 2/01 B26-2

LEGEND			
+ETP600.0	EX. TOP OF PVMT.	⊗	WATER VALVE
+ETG600.0	EX. TOP OF GRND.	⊗	UTILITY BOX
+ETC600.0	EX. TOP OF CURB	⊗	WOOD BOLLARD
+600.0	FIN.FLR. SPOT ELEV.	⊗	GAS METER
TP600.0	TOP OF PAVEMENT	⊗	CURB INLET
TC600.0	TOP OF CONCRETE	⊗	GRATE INLET
TG600.0	TOP OF GROUND	⊗	FIRE HYDRANT
600.0	TOP OF CURB	⊗	WATER METER
— 650 —	PROP. GRADE LINE	⊗	STORM/SS MANHOLE
— 650 —	EX. GRADE LINE	⊗	TREE
FF	FINISHED FLOOR	⊗	LIGHT POLE
↑	GUY WIRE ANCHOR	⊗	SIGNAL POLE
⊗	POWER POLE	⊗	SIGNAL PULL BOX
P	STREET/CABLE SIGN		

**WARNING !!!**  
 FIELD VERIFY EXISTING UNDERGROUND  
 UTILITY LOCATIONS PRIOR TO  
 CONSTRUCTION OR EXCAVATION.





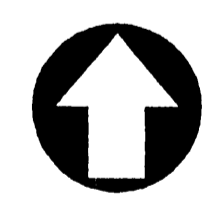
Signing Date: 02-28-01

dietz engineering  
811 e. plano parkway  
suite 109  
plano, texas 75074  
voice: 972 633-8867  
fax: 972 633-1327

Drawn By: LL  
Checked By: RDD

Revisions:	No.	Date	Description

**TRINITY CHRISTIAN ACADEMY**  
EXISTING SITE DEMOLITION  
PLAN VIEW  
for the  
City of Addison, Texas



NORTH

24"x36" Scale: 1" = 20'

11"x17" Scale: 1" = 40'

Vertical Scale: NA

Project Number:

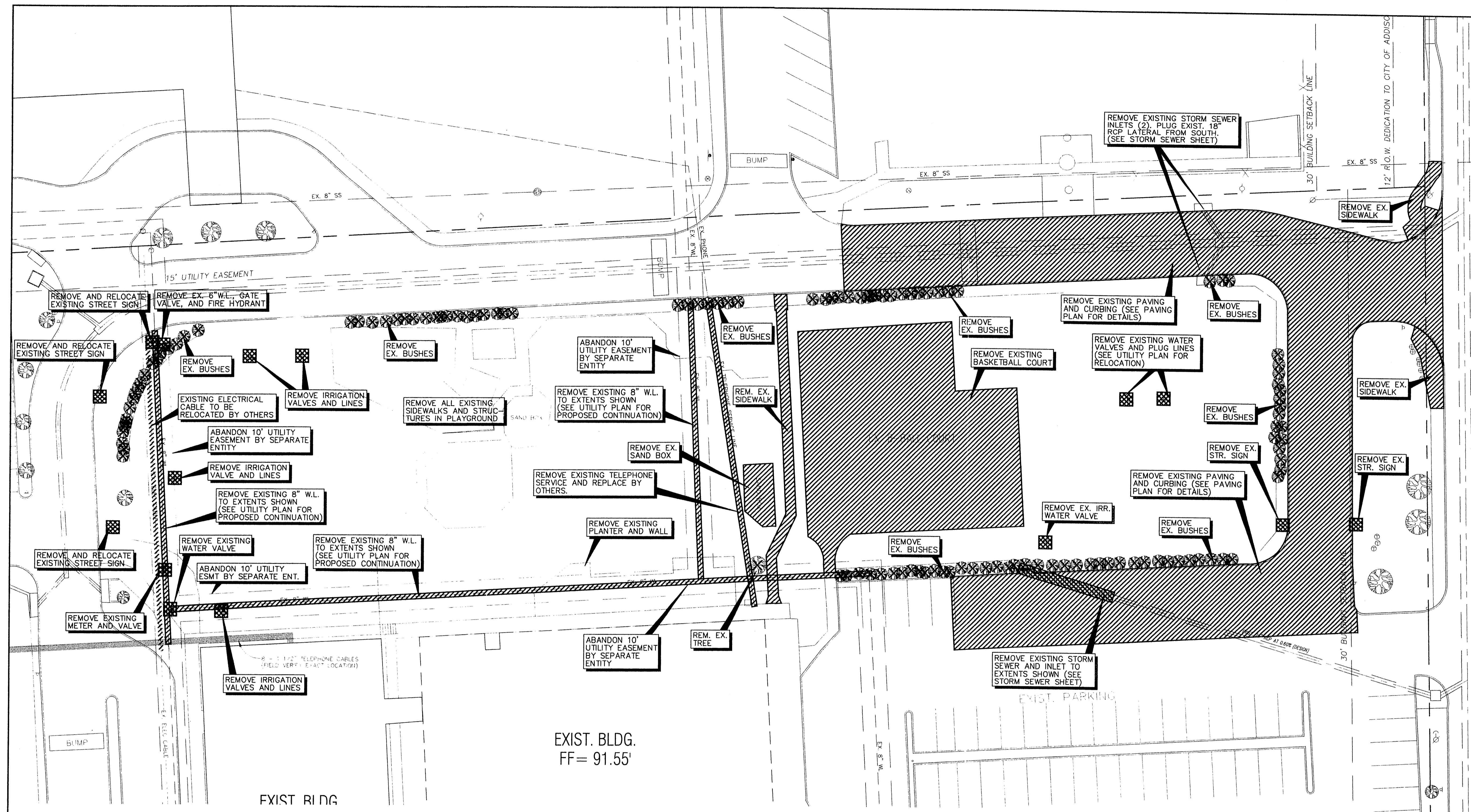
Issue Date: 28 FEB 2001

Sheet Title:

DEMOLITION PLAN

Sheet No.:

C1.02



EXIST. BLDG.  
FF= 91.55'

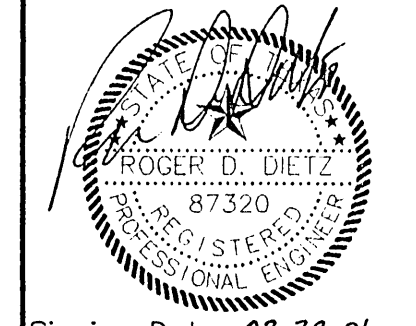
EXIST RING

**LEGEND**

+ETP600.0	EX. TOP OF PVMT.	⊕	WATER VALVE
+ETG600.0	EX. TOP OF GRND.	⊗	UTILITY BOX
+ETC600.0	EX. TOP OF CURB	⊙	WOOD BOLLARD
+600.0	FIN.FLR. SPOT ELEV.	⊙	GAS METER
TP600.0	TOP OF PAVEMENT	⊙	CURB INLET
TC600.0	TOP OF CONCRETE	⊙	GRATE INLET
TG600.0	TOP OF GROUND	⊙	FIRE HYDRANT
[600.0]	TOP OF CURB	⊙	WATER METER
-650-	PROP. GRADE LINE	⊙	STORM/SS MANHOLE
-FF-	EX. GRADE LINE	⊙	TREE
↑	FINISHED FLOOR	⊙	LIGHT POLE
⊙	GUY WIRE ANCHOR	⊙	SIGNAL POLE
⊙	POWER POLE	⊙	SIGNAL PULL BOX
⊙	STREET/CABLE SIGN		

**WARNING !!!**  
FIELD VERIFY EXISTING UNDERGROUND  
UTILITY LOCATIONS PRIOR TO  
CONSTRUCTION OR EXCAVATION.

**dietz engineering**



Signing Date: 02-28-07

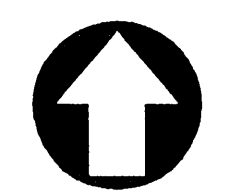
**dietz engineering**

811 e plano parkway  
suite 109  
plano, texas 75074  
voice: 972 633-8867  
fax: 972 633-1327

Drawn By: LL  
Checked By: RDD

Revisions:  
No. Date Description

**TRINITY CHRISTIAN ACADEMY**  
SITE GRADING  
PLAN VIEW  
for the  
City of Addison, Texas



NORTH

24"x36" Scale: 1" = 20'

11"x17" Scale: 1" = 40'

Vertical Scale: NA

Project Number:

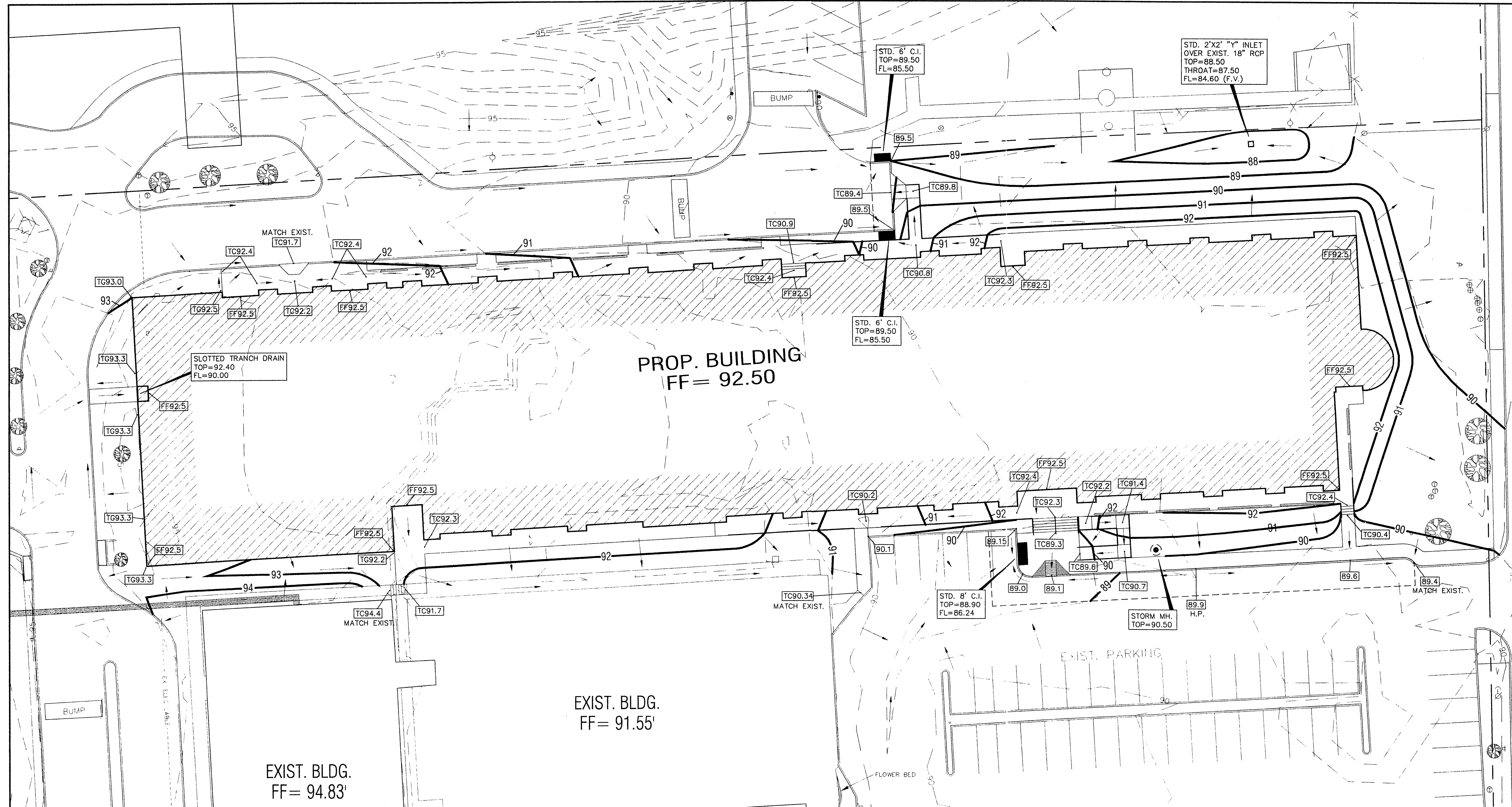
Issue Date: 28 FEB 2007

Sheet Title:

GRADING PLAN

Sheet No.:

**C1.03**



- GENERAL NOTES**
- SEE ARCHITECTURE PLANS FROM SBI ARCHITECTS FOR ALL DIMENSIONS, COORDINATES AND CONTROL POINTS.
  - SEE SHEET C1.03 "GRADING PLAN" FOR ALL SPOT GRADES AND PAVEMENT CONTOURS.
  - ALL WORK UNLESS OTHERWISE NOTED SHALL CONFORM TO THE STANDARD SPECIFICATIONS FOR PUBLIC WORKS CONSTRUCTION ISSUED BY THE NORTH CENTRAL TEXAS COUNCIL OF GOVERNMENTS, AND THE TOWN OF ADDISON PUBLIC WORKS DEPARTMENT STANDARD DETAILS AND SPECIFICATIONS FOR WATER AND SEWER FACILITIES.
  - THE HORIZONTAL AND VERTICAL LOCATION OF EXISTING SUBSURFACE UTILITIES HAVE BEEN DETERMINED FROM DATA RECORDED BY OTHERS. IT WILL BE THE RESPONSIBILITY OF THE CONTRACTOR TO PROTECT ALL PUBLIC UTILITIES IN THE CONSTRUCTION OF THIS PROJECT.
  - CONTRACTOR SHALL MAINTAIN ONE SET OF "AS-BUILT" DRAWINGS ON-SITE WHICH WILL BE SUBMITTED TO THE OWNER OR ENGINEER UPON COMPLETION OF THE PROJECT. "AS-BUILTS" SHALL DEPICT ALL DIFFERING CONSTRUCTION.
  - CONTRACTOR SHALL CALL 1-800-DIG-TESS TO HAVE U.G. LSG, SWBT AND TU FACILITIES LOCATED.
  - ALL WATER MAINS SHALL BE PVC C909, DR 18, CLASS 200.
  - ALL SANITARY SEWER MAINS SHALL BE PVC SDR-35.
  - CONTRACTOR IS RESPONSIBLE FOR COMPLIANCE WITH ALL FEDERAL, STATE AND LOCAL REGULATIONS REGARDING TRENCH SAFETY.
  - FOR QUESTIONS REGARDING THE PROPOSED ELECTRIC SERVICE EASEMENT, PLEASE CONTACT STEVE LAUGHLIN AT TXU (972)323-8921.

**WARNING !!!**  
FIELD VERIFY EXISTING UNDERGROUND  
UTILITY LOCATIONS PRIOR TO  
CONSTRUCTION OR EXCAVATION.

**LEGEND**

+ETP600.0	EX. TOP OF PVMT.	⊗	WATER VALVE
+ETG600.0	EX. TOP OF GRND.	⊗	UTILITY BOX
+ETC600.0	EX. TOP OF CURB	⊗	WOOD BOLLARD
+600.0	FIN.FLR. SPOT ELEV.	⊗	GAS METER
TP600.0	TOP OF PAVEMENT	⊗	CURB INLET
TC600.0	TOP OF CONCRETE	⊗	GRATE INLET
TC600.0	TOP OF GROUND	⊗	FIRE HYDRANT
600.0	TOP OF CURB	⊗	WATER METER
-650-	PROP. GRADE LINE	⊗	STORM/SS MANHOLE
-650-	EX. GRADE LINE	⊗	TREE
FF	FINISHED FLOOR	⊗	LIGHT POLE
↑	GUY WIRE ANCHOR	⊗	SIGNAL POLE
⊗	POWER POLE	⊗	SIGNAL PULL BOX
p	STREET/CABLE SIGN		

**dietz engineering**

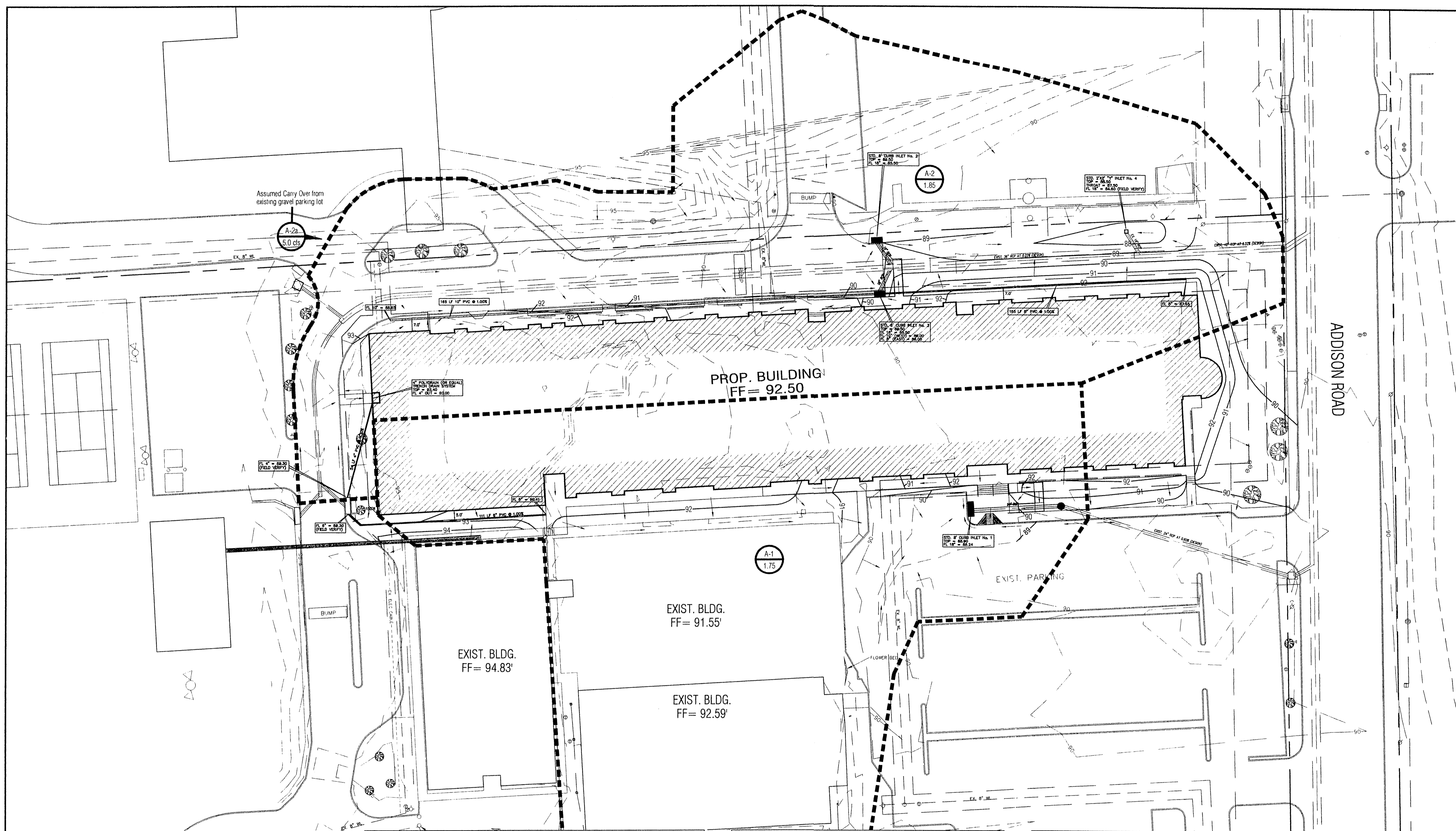


Signing Date: 02.28.01  
**dietz engineering**  
 811 e. plano parkway  
 suite 109  
 plano, texas 75074  
 voice: 972 633-8867  
 fax: 972 633-1327

Drawn By: LL  
 Checked By: RDD  
 Revisions:

No.	Date	Description

**TRINITY CHRISTIAN ACADEMY**  
 DRAINAGE AREA  
 PLAN VIEW  
 for the  
 City of Addison, Texas



**LEGEND**

+ETP600.0	EX. TOP OF PVMT.	⊗	WATER VALVE
+ETG600.0	EX. TOP OF GRND.	⊗	UTILITY BOX
+ETC600.0	EX. TOP OF CURB	⊗	WOOD BOLLARD
+600.0	FIN.FLR. SPOT ELEV.	⊗	GAS METER
TP600.0	TOP OF PAVEMENT	□	CURB INLET
TC600.0	TOP OF CONCRETE	□	GRATE INLET
TG600.0	TOP OF GROUND	⊕	FIRE HYDRANT
[600.0]	TOP OF CURB	⊗	WATER METER
—650—	PROP. GRADE LINE	⊗	STORM/SS MANHOLE
—650—	EX. GRADE LINE	⊗	TREE
FF	FINISHED FLOOR	⊕	LIGHT POLE
↑	GUY WIRE ANCHOR	⊕	SIGNAL POLE
⊗	POWER POLE	□	SIGNAL PULL BOX
p	STREET/CABLE SIGN		

**GENERAL NOTES**

- SEE ARCHITECTURE PLANS FROM SBI ARCHITECTS FOR ALL DIMENSIONS, COORDINATES AND CONTROL POINTS.
- SEE SHEET C1.03 "GRADING PLAN" FOR ALL SPOT GRADES AND PAVEMENT CONTOURS.
- ALL WORK UNLESS OTHERWISE NOTED SHALL CONFORM TO THE STANDARD SPECIFICATIONS FOR PUBLIC WORKS CONSTRUCTION ISSUED BY THE NORTH CENTRAL TEXAS COUNCIL OF GOVERNMENTS, AND THE TOWN OF ADDISON PUBLIC WORKS DEPARTMENT STANDARD DETAILS AND SPECIFICATIONS FOR WATER AND SEWER FACILITIES.
- THE HORIZONTAL AND VERTICAL LOCATION OF EXISTING SUBSURFACE UTILITIES HAVE BEEN DETERMINED FROM DATA RECORDED BY OTHERS. IT WILL BE THE RESPONSIBILITY OF THE CONTRACTOR TO PROTECT ALL PUBLIC UTILITIES IN THE CONSTRUCTION OF THIS PROJECT.
- CONTRACTOR SHALL MAINTAIN ONE SET OF "AS-BUILT" DRAWINGS ON SITE WHICH WILL BE SUBMITTED TO THE OWNER OR ENGINEER UPON COMPLETION OF THE PROJECT. "AS-BUILTS" SHALL DEPICT ALL DIFFERING CONSTRUCTION.
- CONTRACTOR SHALL CALL 1-800-DIG-TESS TO HAVE U.G. LSG, SWBT AND TU FACILITIES LOCATED.
- ALL WATER MAINS SHALL BE PVC C909, DR 18, CLASS 200.
- ALL SANITARY SEWER MAINS SHALL BE PVC SDR-35.
- CONTRACTOR IS RESPONSIBLE FOR COMPLIANCE WITH ALL FEDERAL, STATE AND LOCAL REGULATIONS REGARDING TRENCH SAFETY.
- FOR QUESTIONS REGARDING THE PROPOSED ELECTRIC SERVICE EASEMENT, PLEASE CONTACT STEVE LAUGHLIN AT TXU (972)323-8921.

**DRAINAGE LEGEND**

A-1	DRAINAGE AREA DESIGNATION
5.00	AREA (ACRES)
— — —	DRAINAGE AREA DIVIDE
→	DRAINAGE FLOW ARROW

**DRAINAGE SUMMARY TABLE:**

DRAINAGE AREA NO.	AREA (Acres)	t <sub>c</sub> (Time Con.)	"C" Design	i <sub>1</sub> (In./Hr.)	i <sub>2</sub> (In./Hr.)	i <sub>mp</sub> (In./Hr.)	Q <sub>1</sub> (cfs)	Q <sub>2</sub> (cfs)	Q <sub>mp</sub> (cfs)	REMARKS
A-1	1.75	10	0.70	5.76	8.76	10.50	7.06	10.73	12.86	ROOF/SURFACE FLOW RUNOFF
A-2	1.85	10	0.70	5.76	8.76	10.50	7.46	11.34	13.60	ROOF/SURFACE FLOW RUNOFF
A-2a									5.00	Runoff from west gravel p-lot

**INLET SUMMARY TABLE:**

INLET NO.	INLET LOCATION (Acres)	DRAINAGE AREA No.	GRADE AT INLET (ft)	STREET CAPACITY (CFS)	GUTTER FLOW (CFS)	CARRY OVER FROM U.S. (CFS)	TOTAL FLOW (CFS)	INLET SIZE (FEET)	INLET CAPACITY AT 1/2" = 0.50" (CFS)
1	Main Entrance	A-1	Lowpoint	9.50	12.86	0.00	12.86	8 (C.I.)	17.0
2	End Drive 'A' - North	A-2	Lowpoint	9.50	6.80	2.50	9.30	6 (C.I.)	12.8
3	End Drive 'A' - South	A-2	Lowpoint	9.50	6.80	2.50	9.30	6 (C.I.)	12.8
4	South of Playground	A-2	Lowpoint	9.50	By-Pass 2 & 3	0.00	0.00	2' X 2' "A"	8.0

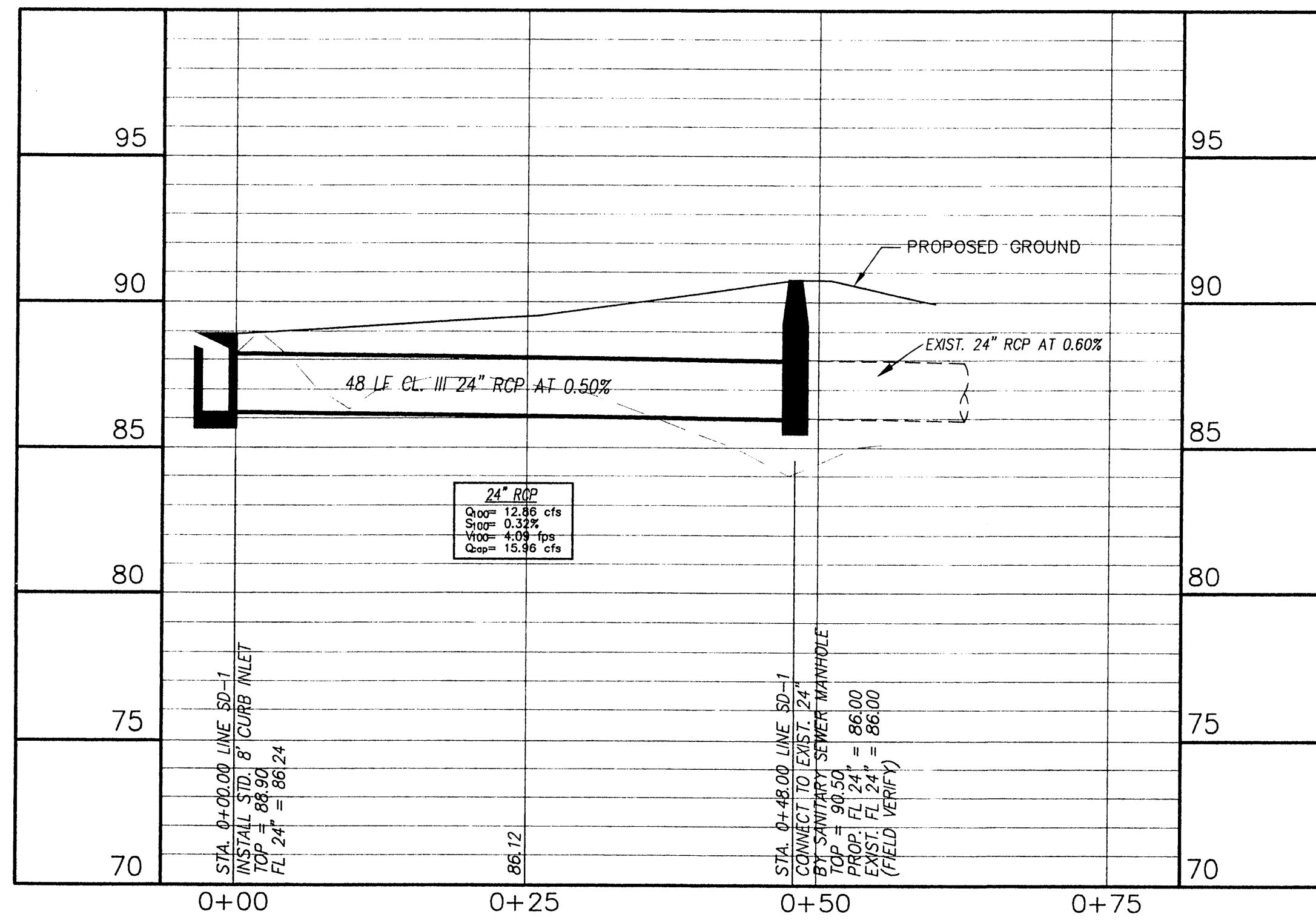
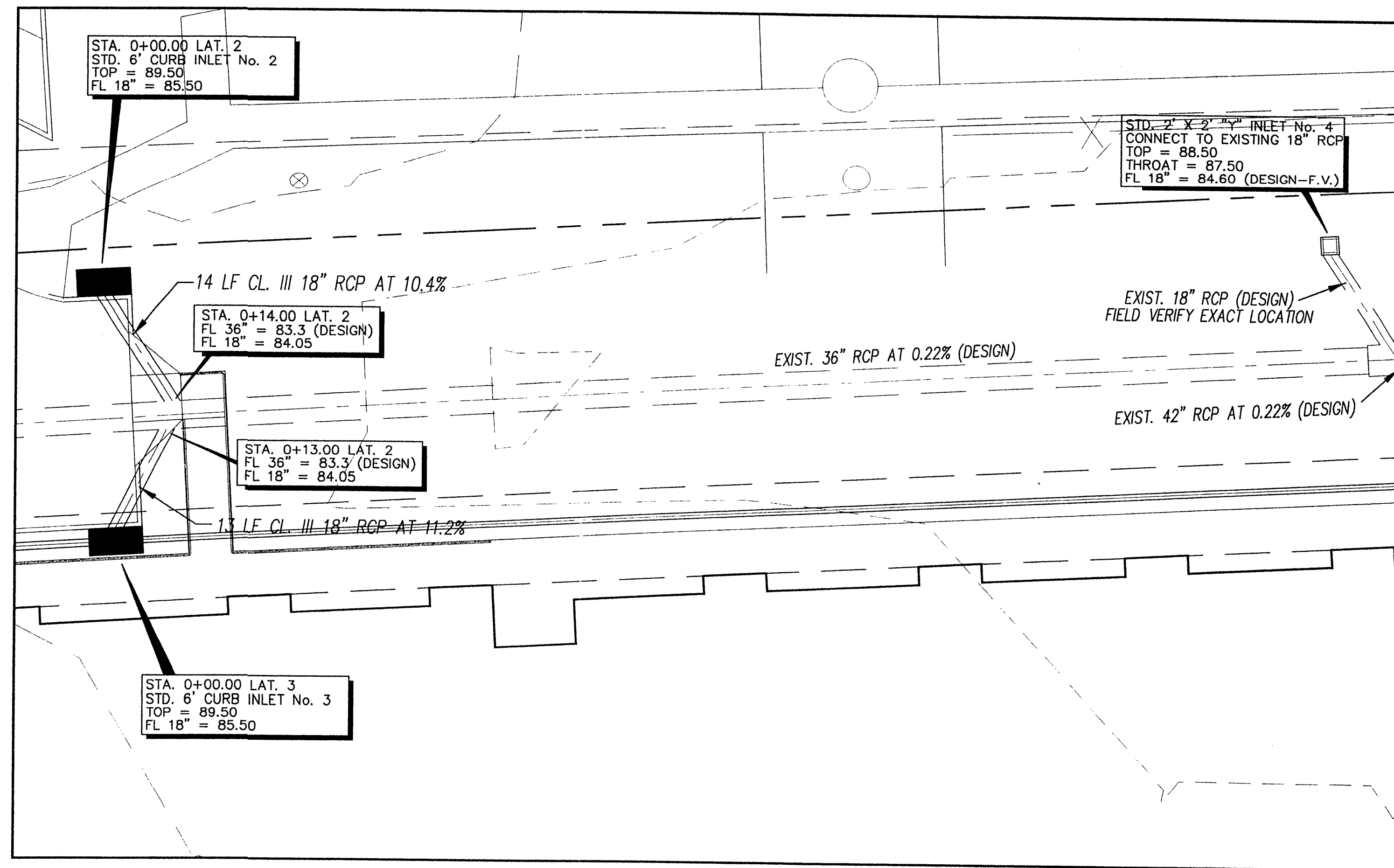
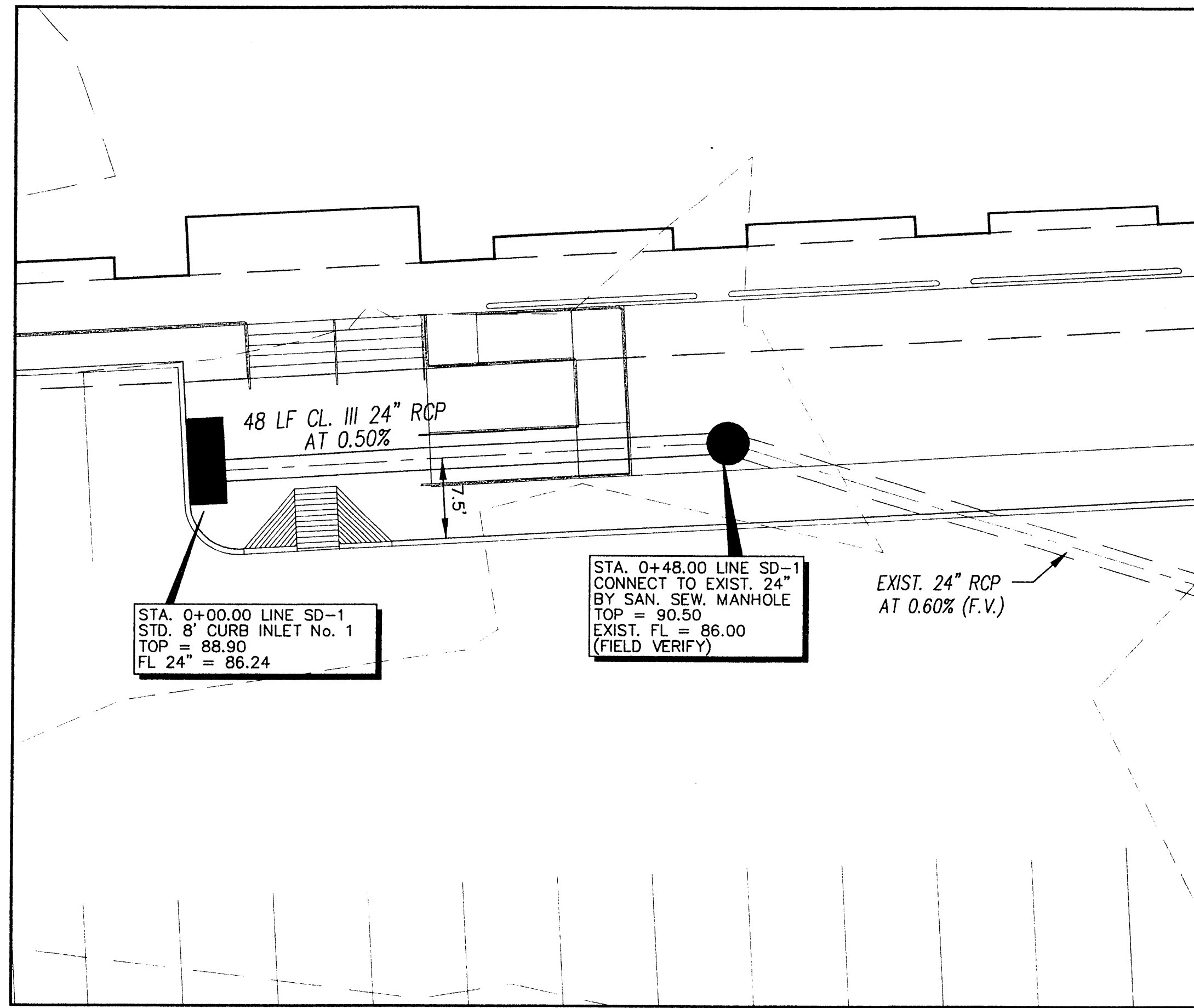


**LEGEND**

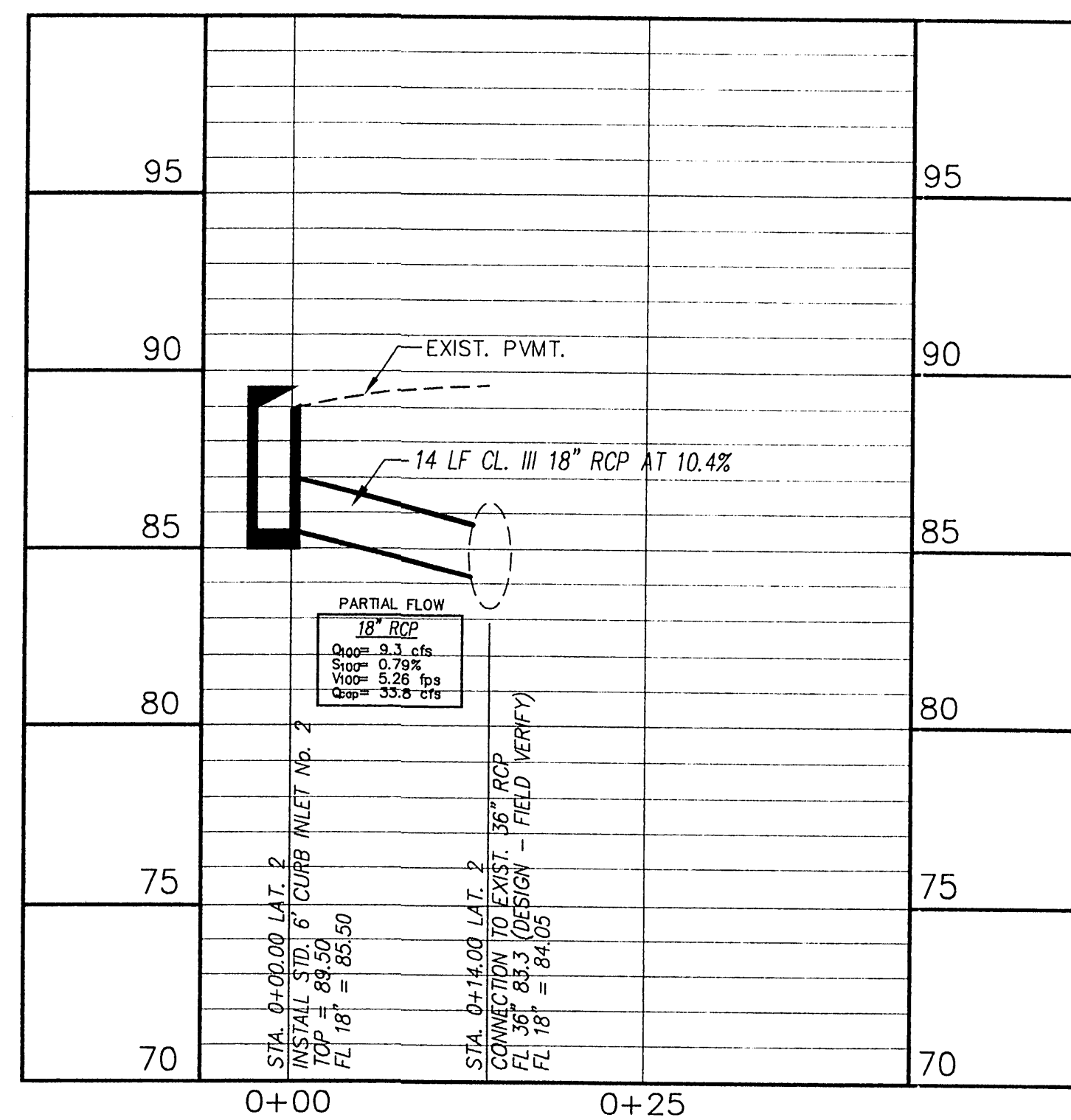
↑ NORTH

24"x36" Scale: 1" = 30'  
 11"x17" Scale: 1" = 60'  
 Vertical Scale: NA

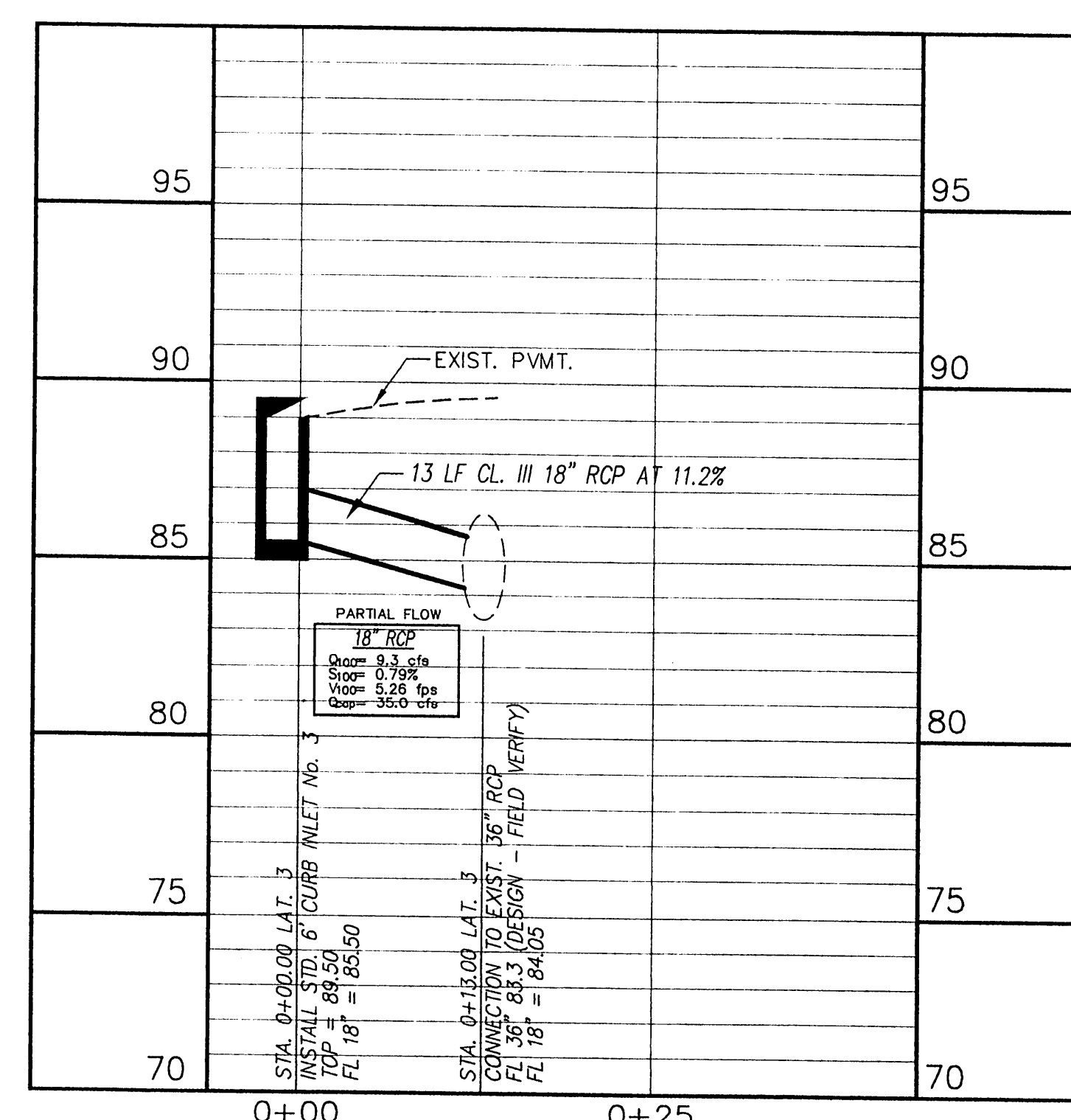
Project Number:  
 Issue Date: 28 FEB 2001  
 Sheet Title:  
**DRAINAGE AREA PLAN**  
 Sheet No.:  
**C1.04**



STORM SEWER LINE SD-1 STA.0+00.00 to 0+48.00

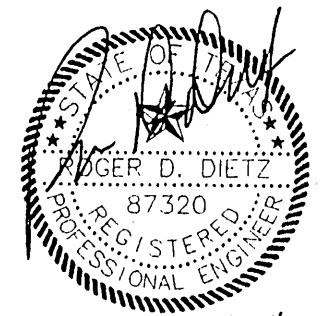


LATERAL 2: STA.0+00.00 to 0+14.00



LATERAL 3: STA.0+00.00 to 0+13.00

**dietz engineering**



Signing Date: 02-28-01

**dietz engineering**  
 811 e. plano parkway  
 suite 109  
 plano, texas 75074  
 voice: 972 633-8867  
 fax: 972 633-1327

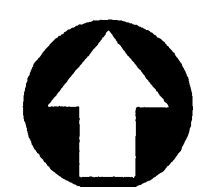
Drawn By: LL  
 Checked By: RDD

Revisions:

No.	Date	Description

TRINITY CHRISTIAN ACADEMY

STORM SEWER  
 PLAN VIEW  
 for the  
 City of Addison, Texas



NORTH

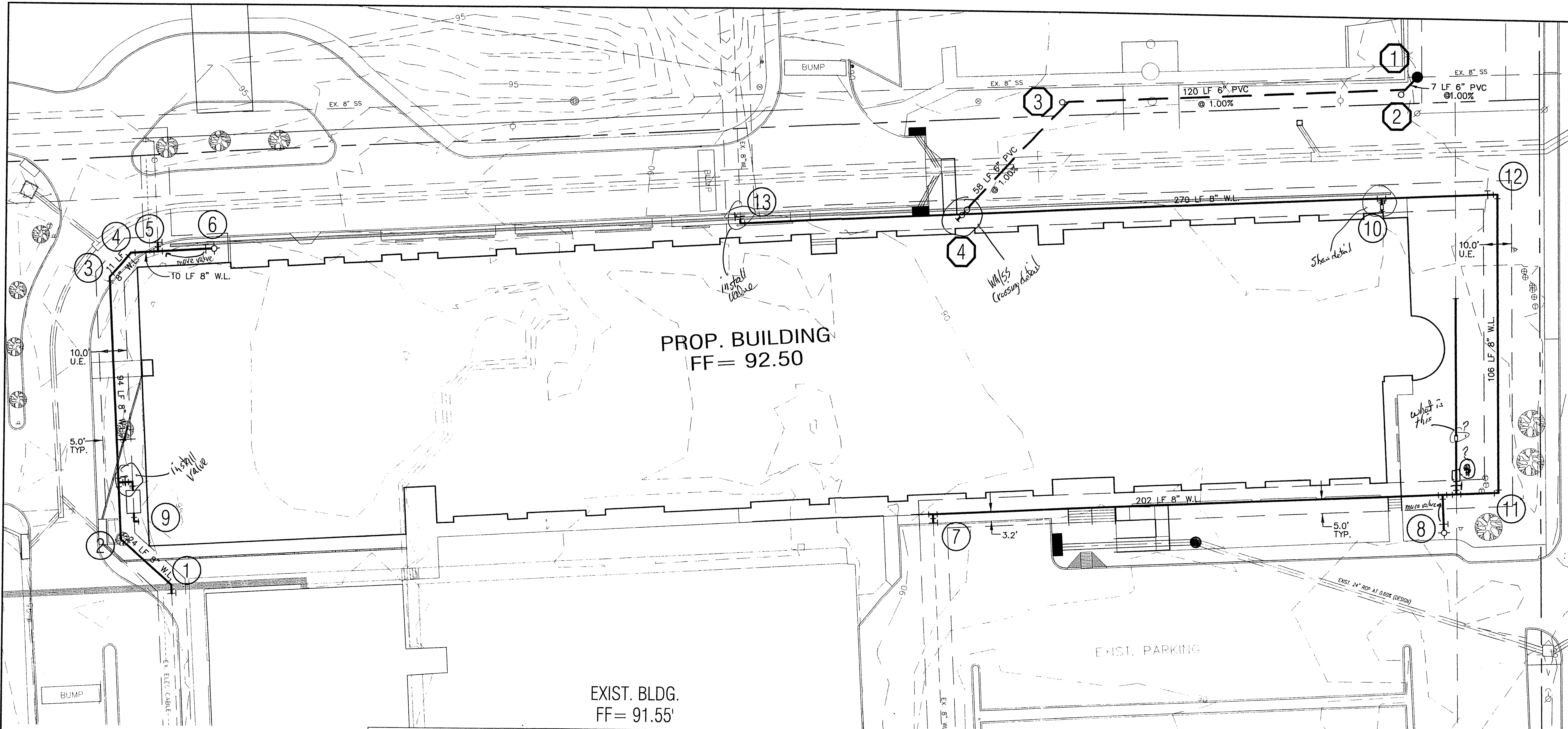
24"x36" Scale: 1" = 10'  
 11"x17" Scale: 1" = 20'  
 Vertical Scale: 1" = 4'

Project Number:  
 Issue Date: 28 FEB 2001  
 Sheet Title:

STORM SEWER PLAN

Sheet No.:

**C1.05**



**WARNING !!!**  
FIELD VERIFY EXISTING UNDERGROUND UTILITY LOCATIONS PRIOR TO CONSTRUCTION OR EXCAVATION.

LEGEND			
+ETP600.0	EX. TOP OF PVMT.	⊗	WATER VALVE
+ETG600.0	EX. TOP OF CRND.	⊗	UTILITY BOX
+ETC600.0	EX. TOP OF CURB	⊗	WOOD BOLLARD
+600.0	FIN. FLR. SPOT ELEV.	⊗	GAS METER
TP600.0	TOP OF PAVEMENT	⊗	CURB INLET
TC600.0	TOP OF CONCRETE	⊗	GRATE INLET
TG600.0	TOP OF GROUND	⊗	FIRE HYDRANT
600.0	TOP OF CURB	⊗	WATER METER
650	PROP. GRADE LINE	⊗	STORM/SS MANHOLE
-650-	EX. GRADE LINE	⊗	TREE
FF	FINISHED FLOOR	⊗	LIGHT POLE
↑	GUY WIRE ANCHOR	⊗	SIGNAL POLE
⊗	POWER POLE	⊗	SIGNAL PULL BOX
p	STREET/CABLE SIGN		

SANITARY SEWER NOTATION	
①	INSTALL: STD. 4.0' DIA. MANHOLE INLINE WITH EXISTING 8" SS LINE TOP = 89.0 EX. 8" IN = 78.50 (FIELD VERIFY) EX. 8" OUT = 78.42 (FIELD VERIFY) 6" FL = 78.50
②	INSTALL: STD. 6" SS CLEANOUT 6" FL = 78.57
③	INSTALL: STD. 6" SS CLEANOUT 6" FL = 79.78
④	SEE MEP PLANS FOR CONTINUATION 5.0' FROM BUILDING EDGE STD. DOUBLE 6" CLEANOUT 6" FL = 80.36

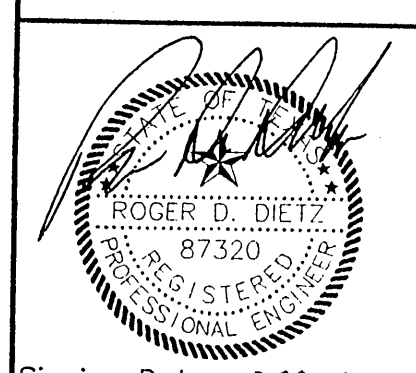
WATER NOTATION	
①	CUT AND REMOVE EXISTING 8" W.L. INSTALL: 1 - 8" 45° BEND 1 - 8" GATE VALVE THRUST BLOCKING
②	INSTALL: 1 - 8" 45° BEND THRUST BLOCKING
③	INSTALL: 1 - 8" 45° BEND THRUST BLOCKING
④	INSTALL: 1 - 8" 45° BEND THRUST BLOCKING
⑤	CUT AND REMOVE EXISTING 8" W.L. INSTALL: 1 - 8" GATE VALVE 1 - 8" TEE THRUST BLOCKING
⑥	INSTALL: 1 - 8"x6" REDUCER 20 LF 6" W.L. 1 - 6" GATE VALVE 1 - FIRE HYDRANT THRUST BLOCKING
⑦	CUT AND REMOVE EXISTING 8" W.L. INSTALL: 1 - 8"x8" TEE 1 - 8" GATE VALVE 1 - 8" PLUG THRUST BLOCKING
⑧	INSTALL: 1 - 8"x6" TEE 13 LF 6" W.L. 1 - 6" GATE VALVE 1 - FIRE HYDRANT THRUST BLOCKING
⑨	INSTALL: 1 - 8"x4" TEE 2 - 4" 90° BENDS 10 LF 4" DOM. WATER SERVICE 1 - 4" WATER METER WITH VAULT ASSEMBLY SEE MEP PLANS FOR CONTINUATION
⑩	INSTALL: 1 - REDUCER 5 LF FIRE LINE TO BE SIZED BY A LICENSED FIRE INSPECTOR 1 - DBL. DETECTOR CHECK VALVE SEE MEP PLANS FOR CONTINUATION
⑪	INSTALL: 1 - 8" 90° BEND THRUST BLOCKING
⑫	INSTALL: 1 - 8" 90° BEND 1 - 8" GATE VALVE THRUST BLOCKING
⑬	CUT AND REMOVE EXISTING 8" W.L. INSTALL: 1 - 8" 90° BEND THRUST BLOCKING

**GENERAL NOTES**

- FIRE LINE TO BE SIZED AND INSTALLED BY A STATE LICENSED FIRE SPRINKLER CONTRACTOR.
- SEE SHEET C1.03 "GRADING PLAN" FOR ALL SPOT GRADES AND PAVEMENT CONTOURS.
- ALL WORK UNLESS OTHERWISE NOTED SHALL CONFORM TO THE STANDARD SPECIFICATIONS FOR PUBLIC WORKS CONSTRUCTION ISSUED BY THE NORTH CENTRAL TEXAS COUNCIL OF GOVERNMENTS, AND THE CITY OF ADDISON UTILITIES DEPARTMENT STANDARD DETAILS AND SPECIFICATIONS FOR WATER AND SEWER FACILITIES.
- THE HORIZONTAL AND VERTICAL LOCATION OF EXISTING SUBSURFACE UTILITIES HAVE BEEN DETERMINED FROM DATA RECORDED BY OTHERS. IT WILL BE THE RESPONSIBILITY OF THE CONTRACTOR TO PROTECT AND ALL PUBLIC UTILITIES DURING CONSTRUCTION OF THE PROJECT.
- CONTRACTOR SHALL MAINTAIN ONE SET OF "AS-BUILT" DRAWINGS ON SITE WHICH WILL BE SUBMITTED TO THE OWNER OR ENGINEER UPON COMPLETION OF THE PROJECT. "AS-BUILTS" SHALL DEPICT ALL DIFFERING CONSTRUCTION.
- CONTRACTOR SHALL CALL 1-800-DIG-TESS TO HAVE U.G. LSG, SWBT AND TU FACILITIES LOCATED.
- ALL WATER MAINS SHALL BE PVC SDR-35.
- ALL SANITARY SEWER MAINS SHALL BE PVC SDR-35.
- CONTRACTOR IS RESPONSIBLE FOR COMPLIANCE WITH ALL FEDERAL, STATE AND LOCAL REGULATIONS REGARDING TRENCH SAFETY.

10. Restraining gloves on hydrant heads, valves, fittings, etc. before key or equal.

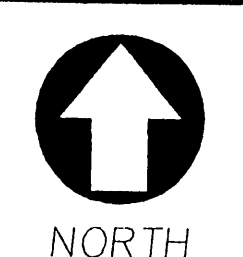
**dietz engineering**



Signing Date: 02.28.01  
**dietz engineering**  
 811 e. plano parkway  
 suite 109  
 plano, texas 75074  
 voice: 972 633-8867  
 fax: 972 633-1327  
 Drawn By: LL  
 Checked By: RDD  
 Revisions:  

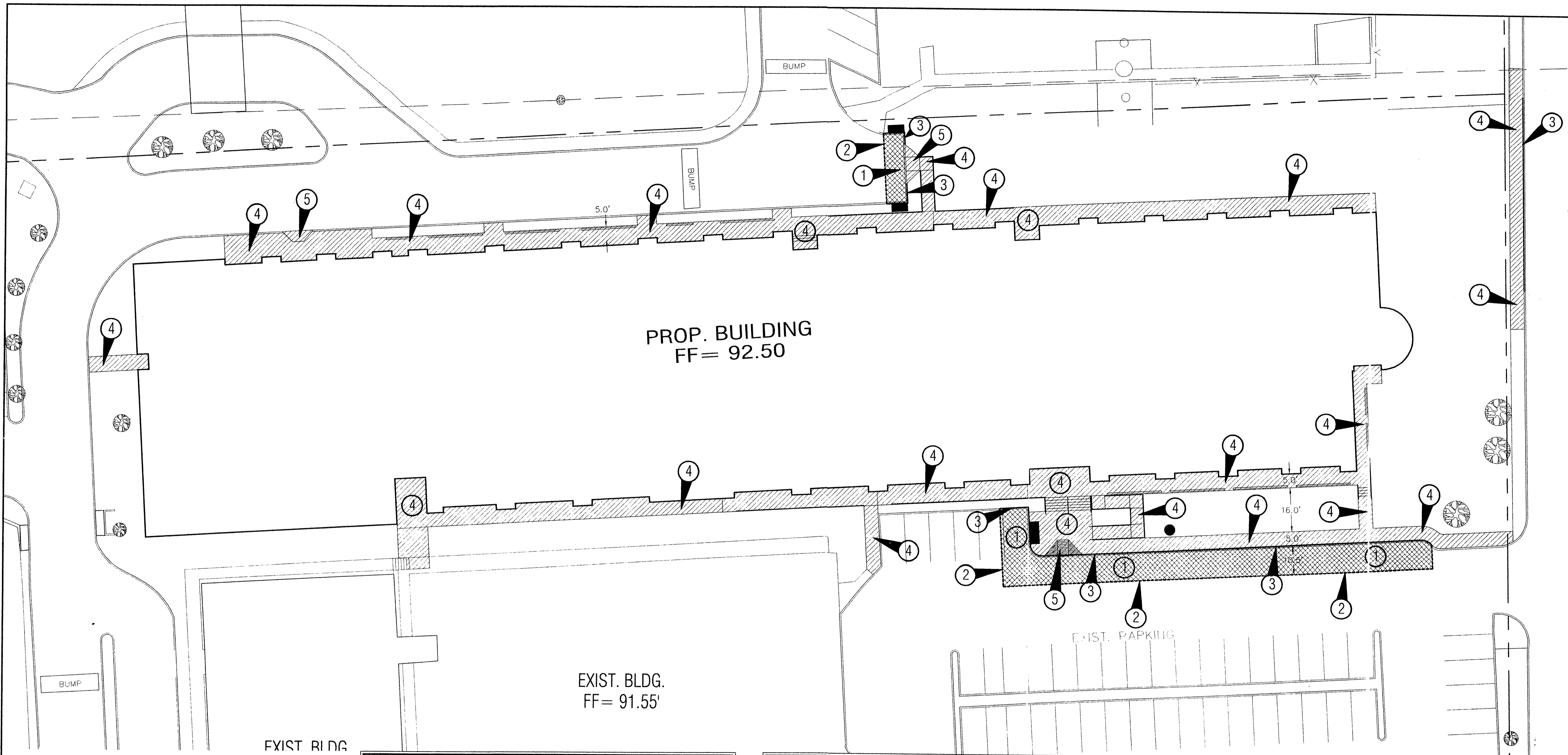
No.	Date	Description

**TRINITY CHRISTIAN ACADEMY**  
 WATER / SANITARY SEWER  
 PLAN VIEW  
 for the  
 City of Addison, Texas

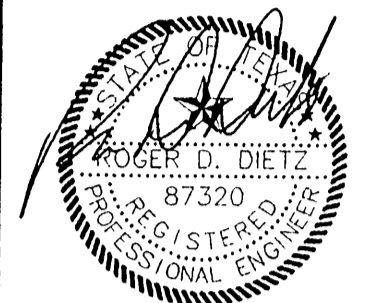


24"x36" Scale: 1" = 20'  
 11"x17" Scale: 1" = 40'  
 Vertical Scale: NA  
 Project Number:  
 Issue Date: 28 FEB 2001  
 Sheet Title:  
**UTILITY PLAN**  
 Sheet No.:

**C1.06**



**dietz engineering**

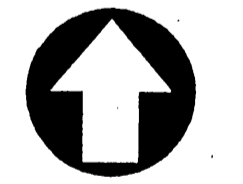


Signing Date: 02.28.01  
**dietz engineering**  
 811 e. plano parkway  
 suite 109  
 plano, texas 75074  
 voice: 972 633-8867  
 fax: 972 633-1327

Drawn By: LL  
 Checked By: RDD  
 Revisions:  

No.	Date	Description

**TRINITY CHRISTIAN ACADEMY**  
 SIDEWALK / DRIVEWAY PAVING  
 PLAN VIEW  
 for the  
 City of Addison, Texas

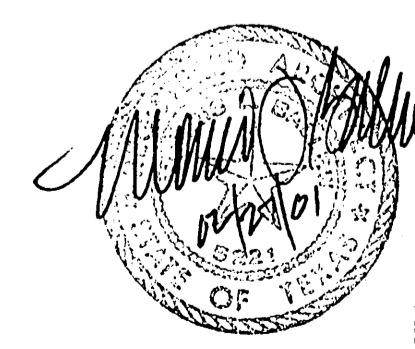


NORTH  
 24"x36" Scale: 1" = 20'  
 11"x17" Scale: 1" = 40'  
 Vertical Scale: NA

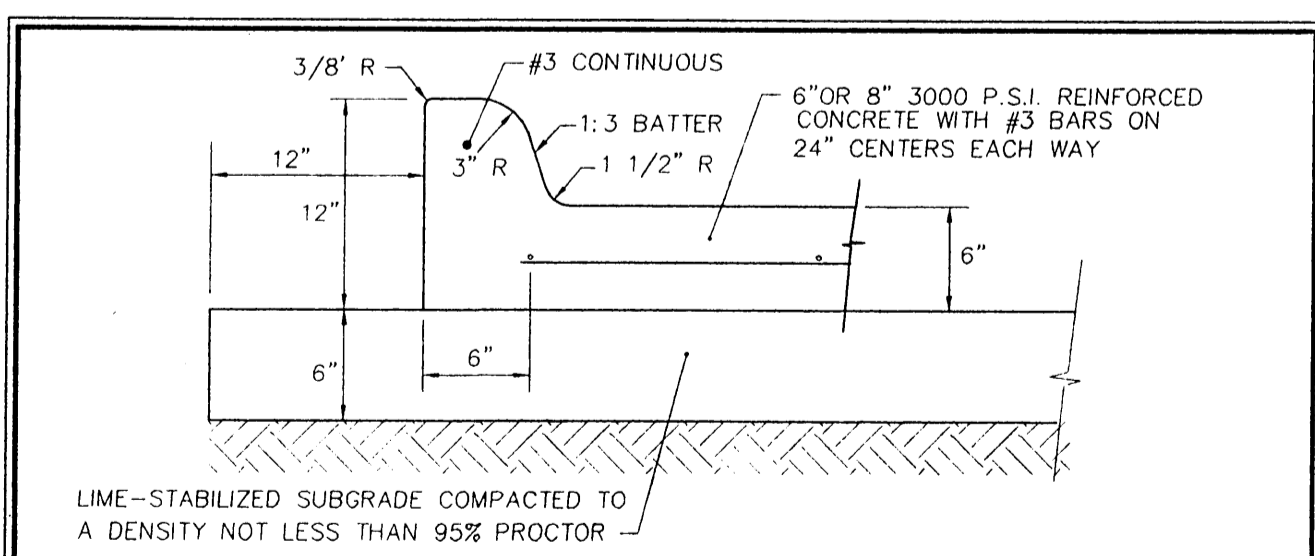
Project Number:  
 Issue Date: 28 FEB 2001  
 Sheet Title:

PAVING PLAN  
 Sheet No.:

**C1.07**



**NOTE:**  
 1. JOINTS SHALL BE INSTALLED AND SPACED PER DETAILS J1 AND J2 THIS SHEET OR AS SHOWN.



LIME-STABILIZED SUBGRADE COMPACTED TO A DENSITY NOT LESS THAN 95% PROCTOR  
**ALTERNATE:**  
 CONTRACTOR MAY ELIMINATE THE REQUIREMENT FOR LIME STABILIZED SUBGRADE BY INCREASING THE PAVEMENT SECTION BY TWO INCHES (TOTAL 8" SECTION)

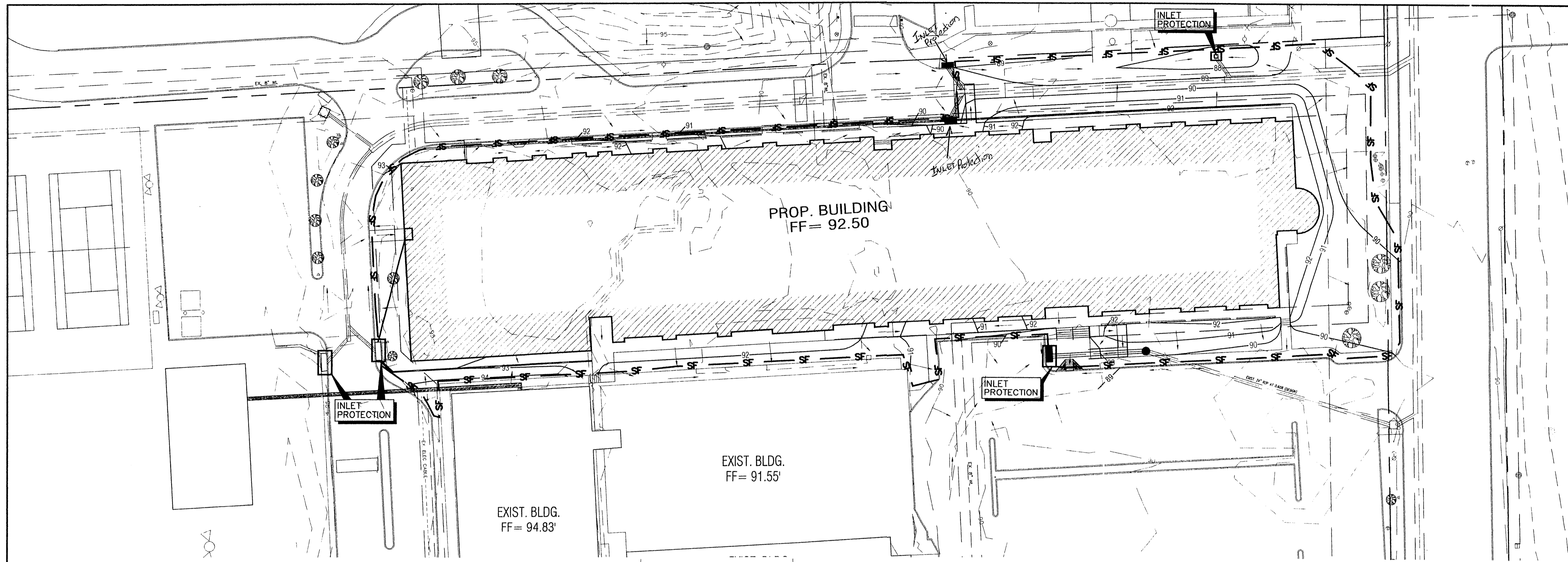
**1** TYPICAL 6" CONCRETE CURB AND GUTTER  
 NTS

**PAVING NOTES**

- ANY WORKMANSHIP AND MATERIALS SHALL BE IN ACCORDANCE WITH CITY OF ARLINGTON STANDARD SPECIFICATIONS AND/OR SPECIFICATIONS ESTABLISHED BY THE PROJECT.
  - ALL DIMENSIONS ARE TO BACK OF CURB UNLESS SPECIFIED OTHERWISE.
  - USUAL PAVEMENT THICKNESS IS AS SHOWN. SUBGRADE DESIGN SHALL BE AS SHOWN AND SHALL EXTEND 12" MIN. BEHIND CURB.
  - REINFORCED CONCRETE PAVEMENT:
    - CONCRETE STRENGTH SHALL BE AS SHOWN.
    - ALL CURBS SHALL BE INTEGRAL WITH PAVEMENT.
    - DETAIL AND ARRANGEMENT OF PAVEMENT JOINTS, ALL TYPES, SHALL BE AS NOTED.
  - SUBGRADE: SUBGRADE UNDER ALL PAVEMENT SHALL BE 6" THICK AND SHALL BE COMPACTED TO A DENSITY NOT LESS THAN 95 PERCENT PROCTOR.
- 6" REINFORCED CONCRETE PAVEMENT INSTALLED PER THE NORTH CENTRAL TEXAS COUNCIL OF GOVERNMENTS REINFORCED CONCRETE PAVEMENT DETAILS.
  - SAW CUT (FULL DEPTH) A TOTAL 12" FROM B/C INTO EXISTING CONCRETE PAVEMENT. DOWEL PROPOSED CONCRETE INTO EXISTING PER NORTH CENTRAL TEXAS COUNCIL OF GOVERNMENTS STANDARD DETAILS.
  - INSTALL 6" CURB AND GUTTER PER DETAIL 1 THIS SHEET OR NORTH CENTRAL TEXAS COUNCIL OF GOVERNMENTS STANDARD DRAWING NUMBER 2120.
  - INSTALL 4" REINFORCED CONCRETE SIDEWALK PER NORTH CENTRAL TEXAS COUNCIL OF GOVERNMENTS STANDARD DRAWING NUMBER 2170.
  - INSTALL STANDARD BARRIER FREE CURB RAMP.

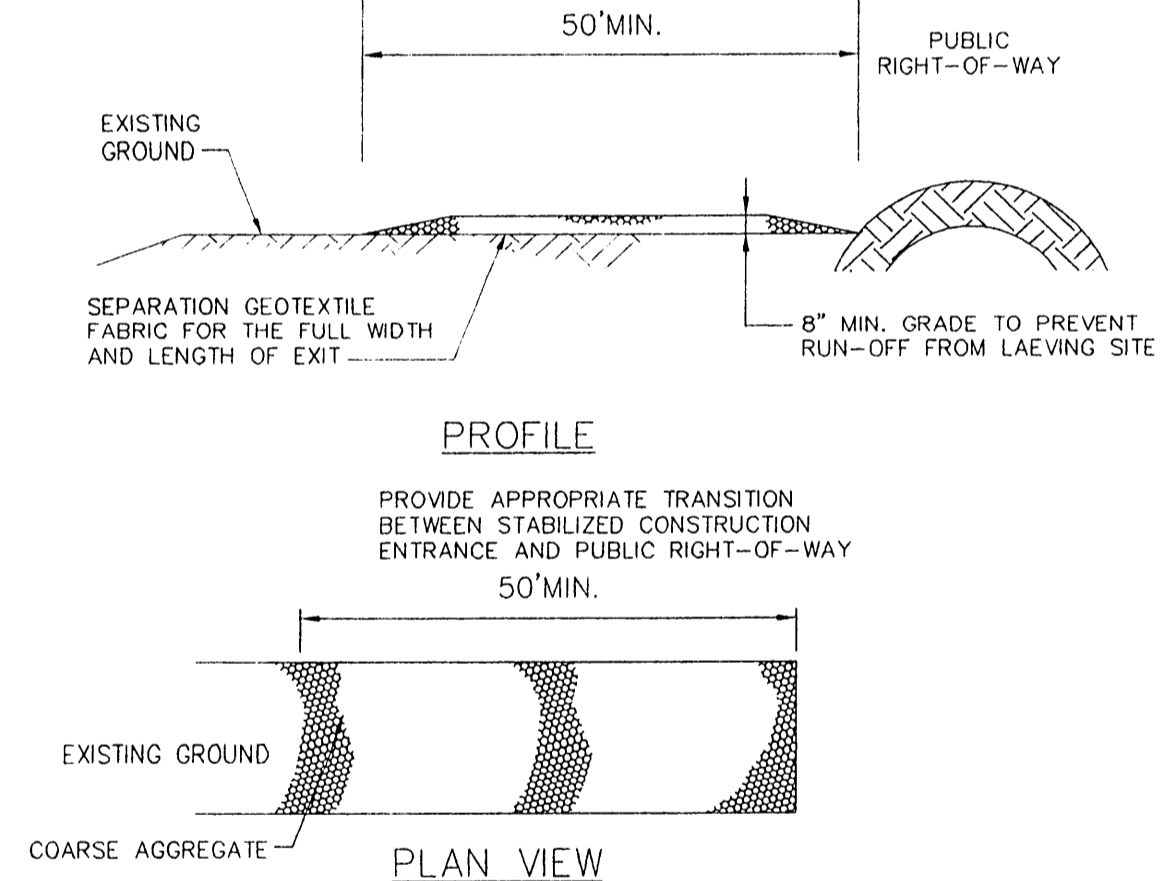
**LEGEND**

+ETP600.0	EX. TOP OF PVMT.	⊗	WATER VALVE
+ETG600.0	EX. TOP OF GRND.	⊗	UTILITY BOX
+ETC600.0	EX. TOP OF CURB	⊗	WOOD BOLLARD
+600.0	FIN. FLR. SPOT ELEV.	⊗	GAS METER
TP600.0	TOP OF PAVEMENT	⊗	CURB INLET
TC600.0	TOP OF CONCRETE	⊗	GRATE INLET
TG600.0	TOP OF GROUND	⊗	FIRE HYDRANT
[600.0]	TOP OF CURB	⊗	WATER METER
-650-	PROP. GRADE LINE	⊗	STORM/SS MANHOLE
-650-	EX. GRADE LINE	⊗	TREE
FF	FINISHED FLOOR	⊗	LIGHT POLE
↑	GUY WIRE ANCHOR	⊗	SIGNAL POLE
⊗	POWER POLE	⊗	SIGNAL PULL BOX
P	STREET/CABLE SIGN	⊗	



**EROSION CONTROL NOTES**

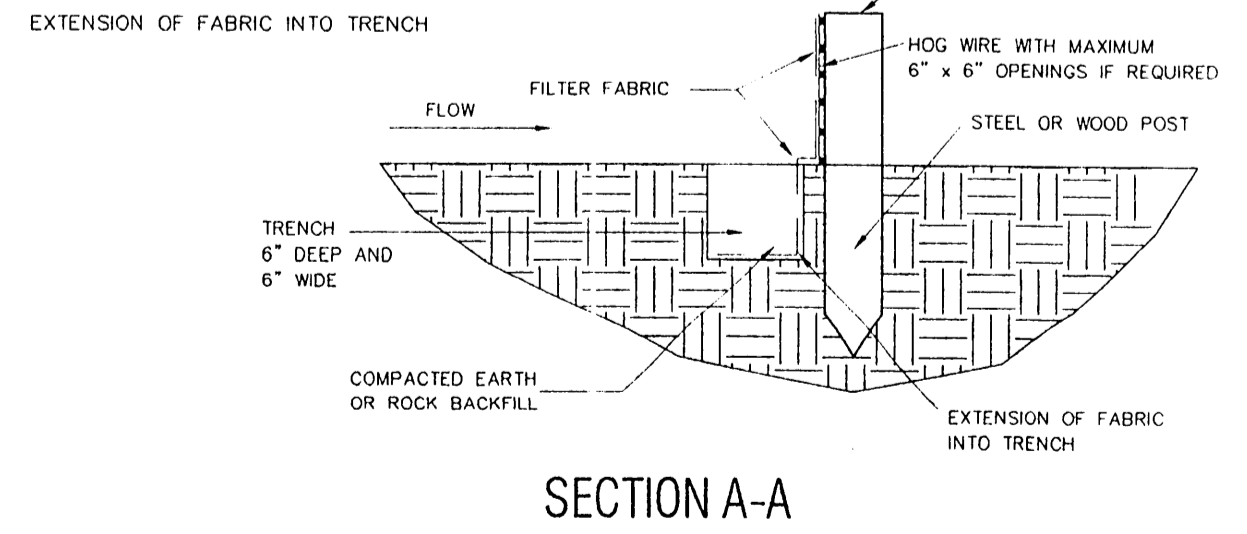
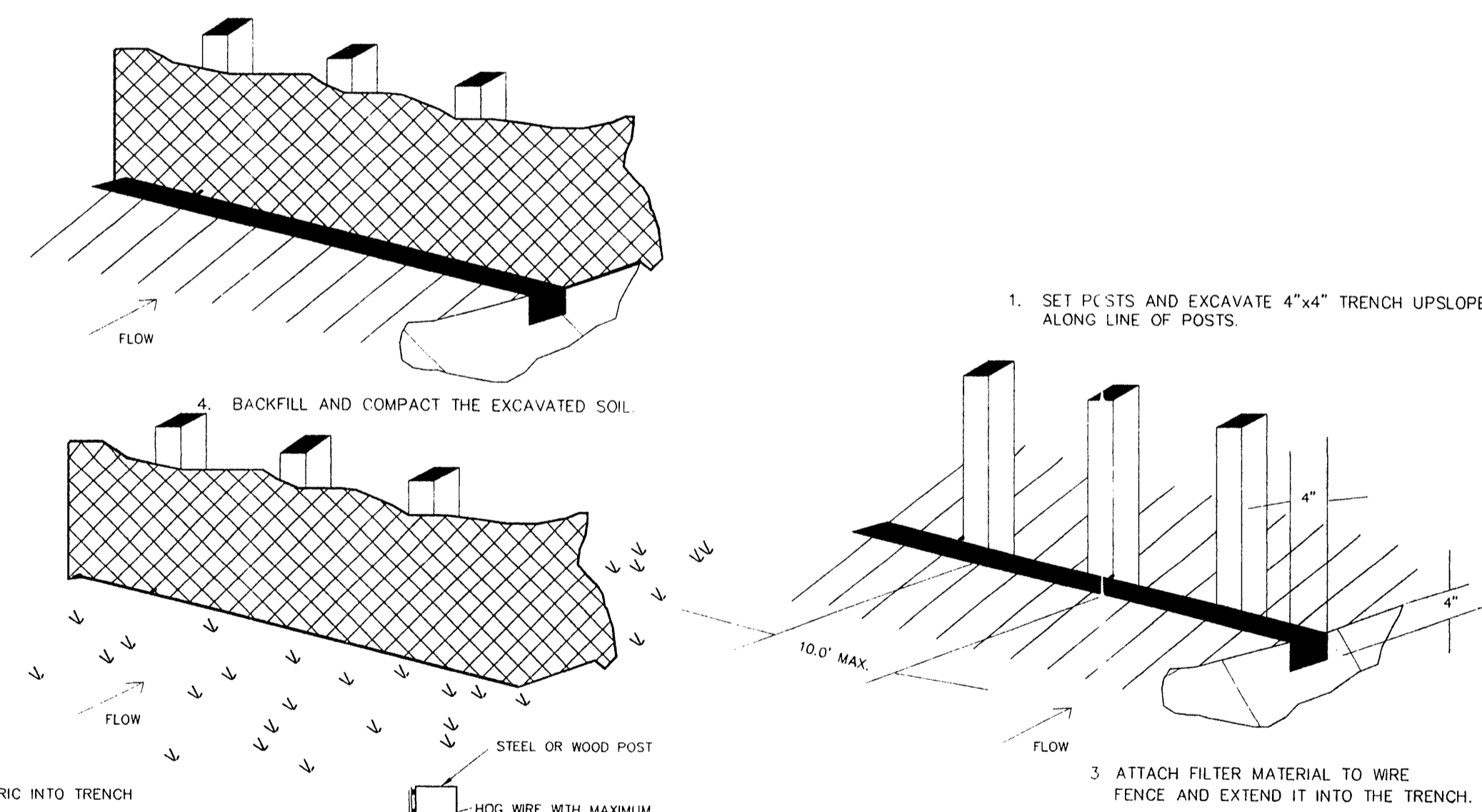
1. ALL CONTRACTORS WILL COMPLY WITH THE REQUIREMENTS AND INTENT OF THE NPDES GENERAL PERMIT FOR STORM WATER DISCHARGES.
2. EACH CONTRACTOR SHALL SUBMIT A NOTICE OF INTENT (NOI) FOR STORM WATER DISCHARGE PERMIT COVERAGE. THIS SUBMITTAL SHALL BE COORDINATED WITH THE ENGINEER AND SHALL OCCUR NO LESS THAN 48 HOURS PRIOR TO THE COMMENCEMENT OF ANY CONSTRUCTION ACTIVITY.
3. EACH CONTRACTOR SHALL OBTAIN AND SUBMIT TO OWNER/ENGINEER A POLLUTION PREVENTION CERTIFICATION FROM EACH SUB-CONTRACTOR WHOSE WORK IMPACTS THE STORM WATER POLLUTION PREVENTION PLAN (SWPPP) PRIOR TO THE PERFORMANCE OF ANY WORK BY SAID SUB-CONTRACTOR. THESE CERTIFICATIONS SHALL BECOME A PART OF THE STORM WATER POLLUTION PREVENTION PLAN.
4. CONTRACTOR SHALL INSTALL EROSION CONTROL MEASURES, AS INDICATED ON THE PLANS AND AS FIELD CONDITIONS WARRANT, PRIOR TO COMMENCING ANY CONSTRUCTION ACTIVITY. REPAIRS OR MODIFICATIONS TO THE MEASURES WILL BE MADE BY THE CONTRACTOR IF THE CONTROL MEASURES PROVE INEFFECTIVE OR IF ADDITIONAL CONTROL MEASURES ARE NECESSARY.
5. AT A MINIMUM, PERIMETER CONTROLS SUCH AS SILT FENCE OR STRAW BALES SHALL BE INSTALLED AT ALL DOWN SLOPE BOUNDARIES AND AS WARRANTED WHERE PAVEMENT REMOVAL, UTILITY CONSTRUCTION, GRADING, OR OTHER CONSTRUCTION ACTIVITIES ARE TO BE PERFORMED. THE CONTRACTOR SHALL AT ALL TIMES TAKE SUCH MEASURES AS NECESSARY TO MINIMIZE OFF-SITE TRACKING OR TRANSPORT OF SEDIMENT AND DEBRIS.
6. DAMAGES TO ADJACENT PROPERTY OR TO RECEIVING WATERS CAUSED BY IMPROPERLY INSTALLED OR POORLY MAINTAINED EROSION CONTROL MEASURES ARE THE RESPONSIBILITY OF THE CONTRACTOR.
7. THE CONTRACTOR SHALL BE RESPONSIBLE FOR THE REMOVAL AND DISPOSAL OF ANY SILTATION CAUSED BY HIS OPERATIONS AND/OR FAILURE OF THE EROSION CONTROL MEASURES.
8. CONTRACTOR SHALL REMOVE AND PROPERLY DISPOSE OF ACCUMULATED SILT AND SEDIMENT FROM EROSION CONTROL MEASURES WHEN IT REACHES A DEPTH OF SIX (6) INCHES OR IMPAIRS THE EFFECTIVENESS OF THE MEASURES.
9. THE OWNER'S REPRESENTATIVE WILL INSPECT THE PROJECT AT A MINIMUM OF EVERY SEVEN DAYS AND AFTER EVERY RAINFALL OF 0.5 INCHES OR GREATER TO DETERMINE THE INTEGRITY AND EFFECTIVENESS OF THE EROSION CONTROL MEASURES. A WRITTEN INSPECTION REPORT WILL BE FILED WITH THE POLLUTION PREVENTION PLAN. THIS INSPECTION DOES NOT RELIEVE THE CONTRACTOR'S RESPONSIBILITY FOR INSPECTION AND MAINTENANCE OF THE EROSION CONTROL MEASURES OR HIS DUTY TO COMPLY WITH THE INTENT AND CONDITIONS OF THE NPDES GENERAL PERMIT.
10. INLET PROTECTION: THE CONTRACTOR SHALL PROVIDE ADEQUATE PROTECTION OF STORM DRAIN INLETS USING STRAW BALE CHECKS OR OTHER MEASURES AS SPECIFIED. WHERE INLETS ARE BEING INSTALLED, THE CONTRACTOR SHALL PREVENT MATERIALS FROM ENTERING THE STORM DRAIN SYSTEM.
11. ALL STOCKPILED SOILS WILL BE SURROUNDED BY A STRAW BALE DIKE, SILT FENCE, SEDIMENT CONTROL SWALE, OR EQUIVALENT MEASURE, AS APPROVED BY ENGINEER, TO PROPERLY CONTROL SEDIMENT RUNOFF.
12. STABILIZATION - THE CONTRACTOR SHALL STABILIZE ANY AREA WHERE CONSTRUCTION ACTIVITY IS TO BE TEMPORARILY OR PERMANENTLY CEASED FOR MORE THAN 14 DAYS.
13. AREAS SHOWN "TO REMAIN NATURAL" ARE NOT TO BE DISTURBED BY ANY CONSTRUCTION OPERATIONS WITHOUT PRIOR CONSENT OF THE ENGINEER. THESE AREAS WILL SERVE AS NATURAL FILTER STRIPS.
14. ALL EROSION CONTROL MEASURES SHALL REMAIN IN PLACE UNTIL ADEQUATE GROUND COVER IS ESTABLISHED TO PREVENT SILTATION OF DOWNSTREAM WATERWAYS.



**STABILIZED CONSTRUCTION NOTES**

1. LENGTH SHALL BE SHOWN ON THE CONSTRUCTION DRAWINGS, BUT NOT LESS THAN 50 FEET.
2. THICKNESS SHALL NOT BE LESS THAN 8 INCHES.
3. WIDTH SHALL NOT BE LESS THAN FULL WIDTH OF ALL POINTS OF INGRESS OR EGRESS.
4. STABILIZATION FOR OTHER AREAS SHALL HAVE THE SAME AGGREGATE THICKNESS AND WIDTH REQUIREMENTS AS THE STABILIZED CONSTRUCTION EXIT, UNLESS OTHERWISE SHOWN ON THE CONSTRUCTION DRAWINGS.
5. STABILIZED AREA MAY BE WIDER OR LONGER TO ACCOMMODATE A TRUCK WASHING AREA, WHEN SHOWN ON THE CONSTRUCTION DRAWING. AN OUTLET SEDIMENT TRAP MUST BE PROVIDED FOR THE TRUCK WASHING AREA.
6. CONTRACTOR SHALL BE RESPONSIBLE FOR PROCURING THE NOI AS REQUIRED.

**E1 STABILIZED CONSTRUCTION ENTRANCE**  
NTS



**E2 SILT FENCE CONSTRUCTION**  
NTS

**LEGEND**

+ETP600.0	EX. TOP OF PVMT.	⊙	WATER VALVE
+ETG600.0	EX. TOP OF GRND.	⊗	UTILITY BOX
+ETC600.0	EX. TOP OF CURB	⊙	WOOD BOLLARD
+600.0	FIN.FLR. SPOT ELEV.	⊙	GAS METER
TP600.0	TOP OF PAVEMENT	□	CURB INLET
TC600.0	TOP OF CONCRETE	⊙	GRATE INLET
TG600.0	TOP OF GROUND	⊙	FIRE HYDRANT
600.0	TOP OF CURB	⊙	WATER METER
650	PROP. GRADE LINE	⊙	STORM/SS MANHOLE
-650-	EX. GRADE LINE	⊙	TREE
FF	FINISHED FLOOR	⊙	LIGHT POLE
↑	GUY WIRE ANCHOR	⊙	SIGNAL POLE
⊙	POWER POLE	□	SIGNAL PULL BOX
b	STREET/CABLE SIGN		

**LEGEND**

—SF—	SILT FENCE (SEE DETAIL E2)
[Hatched Box]	STABILIZED CONSTRUCTION ENTRANCE (SEE DETAIL E1)
→	DRAINAGE FLOW ARROW
⊙	STORM DRAIN INLET

**dietz engineering**



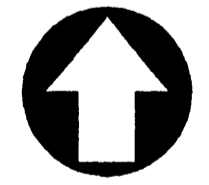
Signing Date: 02.28.01  
**dietz engineering**  
 811 e. plano parkway  
 suite 109  
 plano, texas 75074  
 voice: 972 633-8867  
 fax: 972 633-1327

Drawn By: LL  
 Checked By: RDD

Revisions:

No.	Date	Description

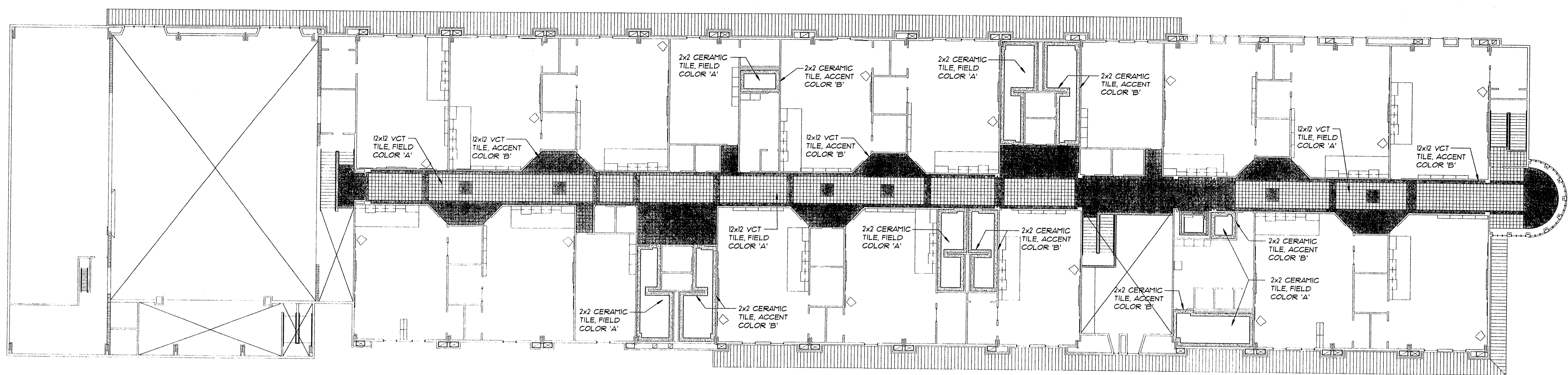
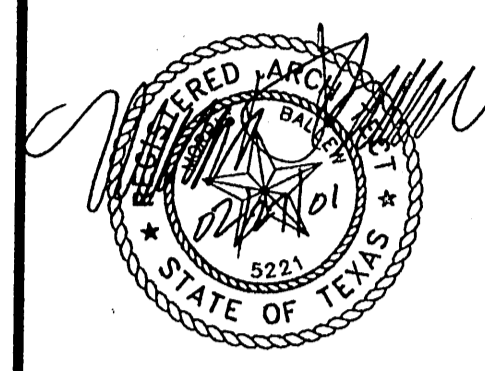
**TRINITY CHRISTIAN ACADEMY**  
 EROSION CONTROL PLAN VIEW  
 for the  
 City of Addison, Texas



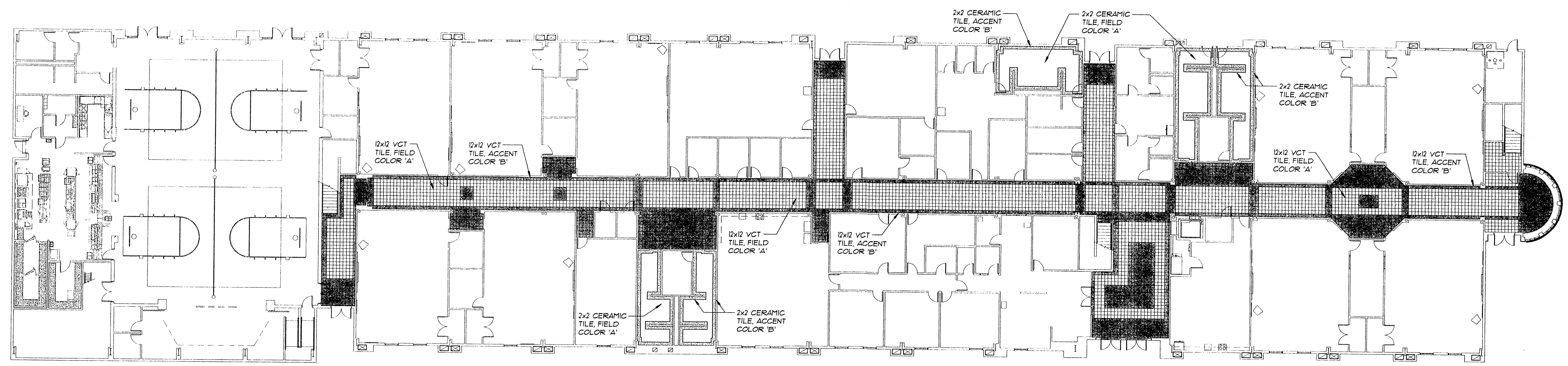
24"x36" Scale: 1" = 20'  
 11"x17" Scale: 1" = 40'  
 Vertical Scale: NA  
 Project Number:  
 Issue Date: 28 FEB 2001  
 Sheet Title:  
**EROSION CONTROL PLAN**  
 Sheet No.:

**C1.08**





**02 SECOND FLOOR - FLOOR PATTERN**  
 1/16" = 1'-0"

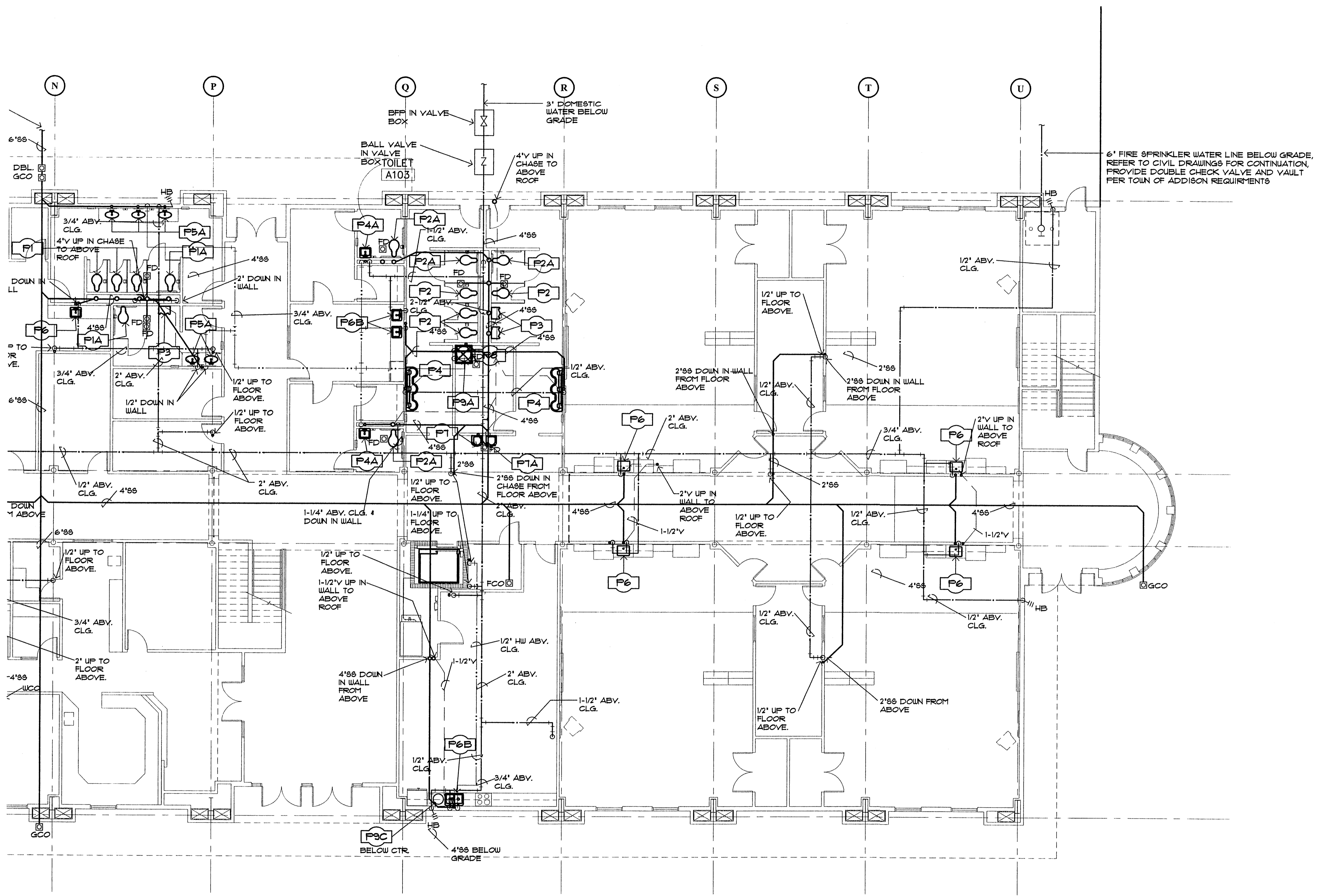


**01 FIRST FLOOR - FLOOR PATTERN**  
 1/16" = 1'-0"

A NEW  
**TRINITY LOWER SCHOOL**  
 TRINITY CHRISTIAN ACADEMY  
 ADDISON, TEXAS  
**COMPOSITE FLOOR PLANS**

SBI Project No.:	9924
Date:	02/02/2001
Issue:	Construction Issue
Drawn By:	TMB
Checked By:	
Revisions:	

REFER TO SHEET 16.13 FOR PLUMBING SYMBOL LEGEND.  
 REFER TO SHEETS 16.11 & 16.12 FOR PLUMBING RISER DIAGRAMS.  
 REFER TO SHEET 16.13 FOR PLUMBING CONNECTION SCHEDULES.  
 REFER TO SHEET 16.14 FOR PLUMBING DETAILS.



**S · B · I**  
**SCOTT · BALLEW · INC**  
 ARCHITECTURE · DESIGN · PLANNING  
 214-252-0883  
 FAX 214-252-0889  
 3511 CEDAR SPRINGS · SUITE THREE  
 DALLAS · TX 75219



A NEW  
**TRINITY LOWER SCHOOL**  
 TRINITY CHRISTIAN ACADEMY  
 ADDISON, TEXAS  
**1ST FLR PLUMBING PLAN - AREA 'A'**

SBI Project No.:	9924
Date:	02-15-2000
Issue:	5.D. Print Set
Drawn By:	B.F. SWS
Checked By:	D.P.
Revisions:	02/19/01

SHEET

**16.01**

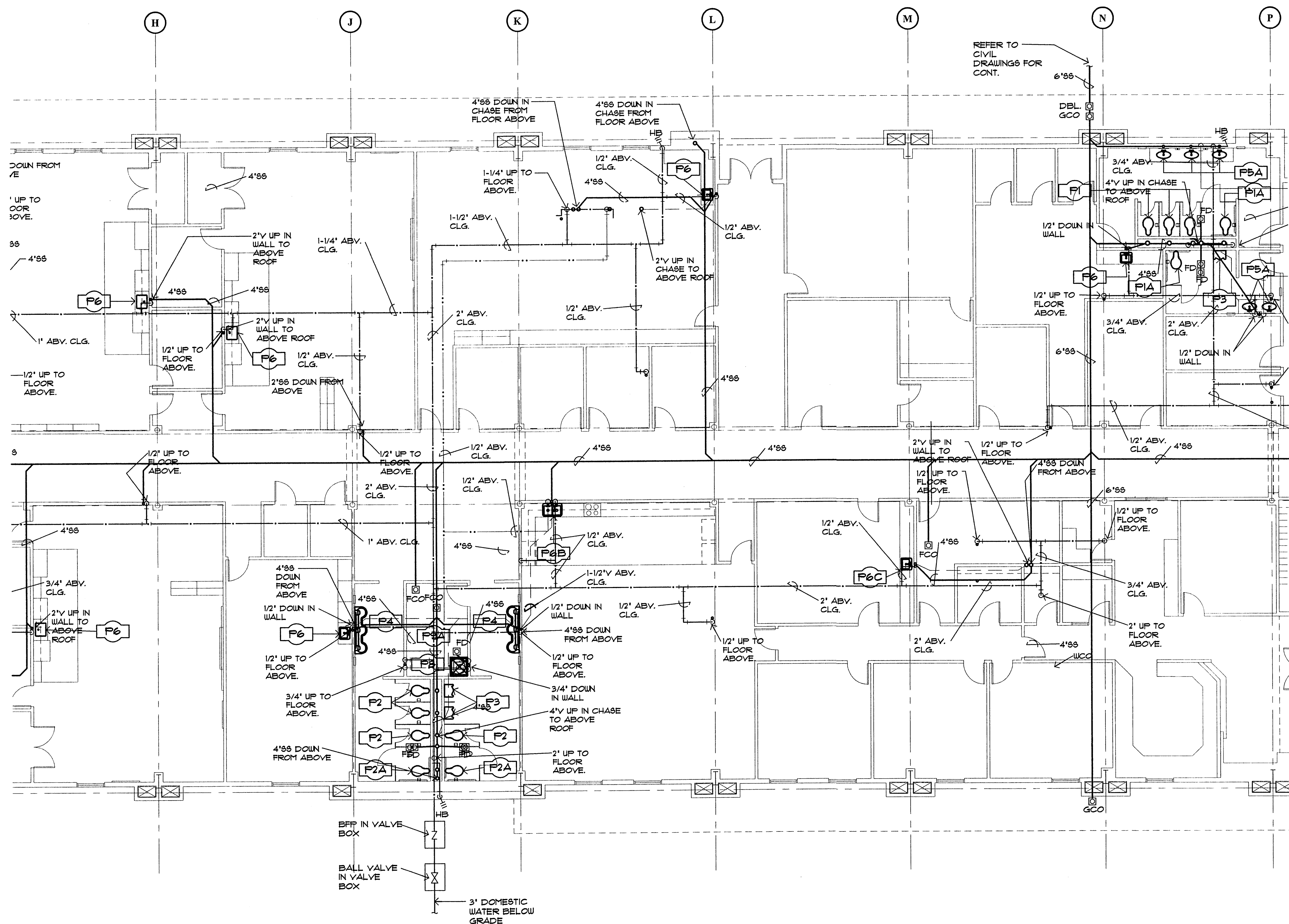
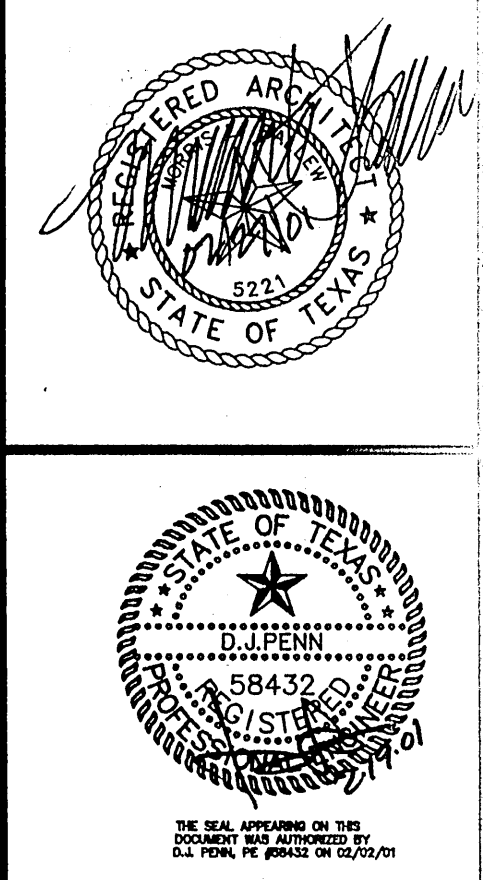
PLAN NORTH  
**01 1ST FLR PLUMBING PLAN - AREA 'A'**  
 1/8" = 1'-0"

**dp** DON PENN  
 CONSULTING ENGINEERS  
 3950 HIGHWAY 360, SUITE 101  
 GRAPEVINE, TEXAS 76051  
 817-410-2858 FAX 817-251-8411

SHEET NO. 01 OF 14 TOTAL SHEETS

REFER TO SHEET 16.13 FOR PLUMBING SYMBOL LEGEND.  
 REFER TO SHEETS 16.11 & 16.12 FOR PLUMBING RISER DIAGRAMS.  
 REFER TO SHEET 16.13 FOR PLUMBING CONNECTION SCHEDULES.  
 REFER TO SHEET 16.14 FOR PLUMBING DETAILS.

**S · B**  
 SCOTT · BALLEW · INC  
 ARCHITECTURE · DESIGN · PLANNING  
 214-252-0883  
 FAX 214-252-0889  
 3511 CEDAR SPRINGS · SUITE THREE  
 DALLAS · TX 75219



REFER TO CIVIL DRAWINGS FOR CONT.



**01 1ST FLR PLUMBING PLAN - AREA 'B'**  
 1/8" = 1'-0"

A NEW  
**TRINITY LOWER SCHOOL**  
 TRINITY CHRISTIAN ACADEMY  
 ADDISON, TEXAS  
**1ST FLR PLUMBING PLAN - AREA 'B'**

SBI Project No.:	9924
Date:	02-15-2000
Issue:	S.D. Revision Set
Drawn By:	RLP-SWS
Checked By:	D.P.
Revisions:	02/19/01

SHEET

**16.02**

**dp** DON PENN CONSULTING ENGINEERS  
 3950 HIGHWAY 360, SUITE 101  
 GRAPEVINE, TEXAS 76051  
 817-410-2858 FAX 817-251-8411

SHEET NO. 02 OF 14 TOTAL SHEETS

REFER TO SHEET 16.13 FOR PLUMBING SYMBOL LEGEND.  
 REFER TO SHEETS 16.11 & 16.12 FOR PLUMBING RISER DIAGRAM.  
 REFER TO SHEET 16.13 FOR PLUMBING CONNECTION SCHEDULES.  
 REFER TO SHEET 16.14 FOR PLUMBING DETAILS.

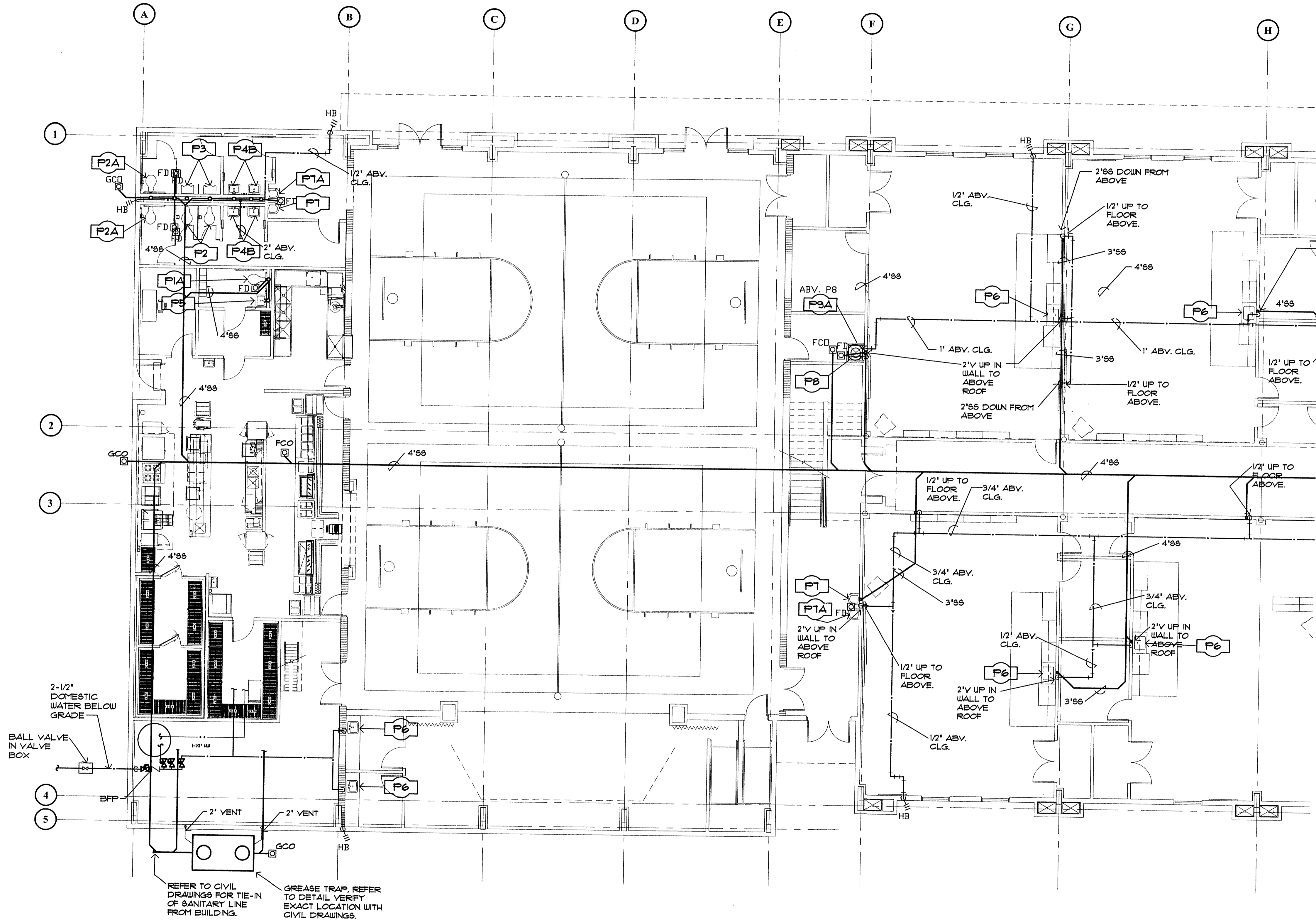
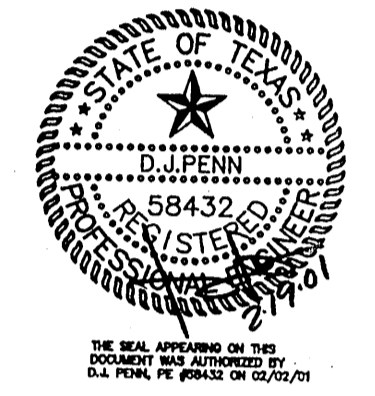
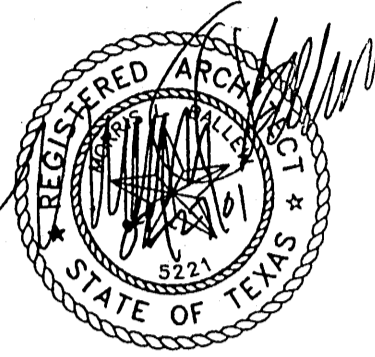
**S·B**

SCOTT·BALLEW·INC

ARCHITECTURE·DESIGN·PLANNING

214-252-0883  
 FAX 214-252-0889

3511 CEDAR SPRINGS - SUITE THREE  
 DALLAS - TX 75219



2-1/2\"/>

REFER TO CIVIL DRAWINGS FOR TIE-IN OF SANITARY LINE FROM BUILDING.  
 GREASE TRAP, REFER TO DETAIL VERIFY EXACT LOCATION WITH CIVIL DRAWINGS.



**01 1ST FLR PLUMBING PLAN - AREA 'C'**

1/8" = 1'-0"

A NEW  
**TRINITY LOWER SCHOOL**  
 TRINITY CHRISTIAN ACADEMY  
 ADDISON, TEXAS  
 1ST FLR PLUMBING PLAN - AREA 'C'

SBI Project No.:	9924
Date:	09-19-2000
Issue:	SD, Prebid Set
Drawn By:	BE-SWS
Checked By:	DJP
Revisions:	02/19/01

SHEET

**16.03**

**dp** DON PENN CONSULTING ENGINEERS  
 3950 HIGHWAY 360, SUITE 101  
 GRAPEVINE, TEXAS 76051  
 817-410-2855 FAX 817-251-8444