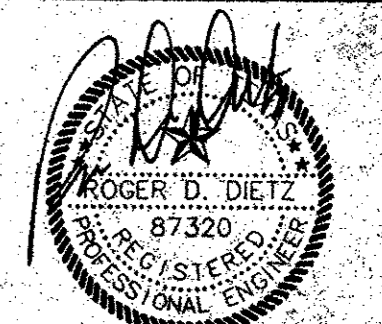


**dietz engineering**



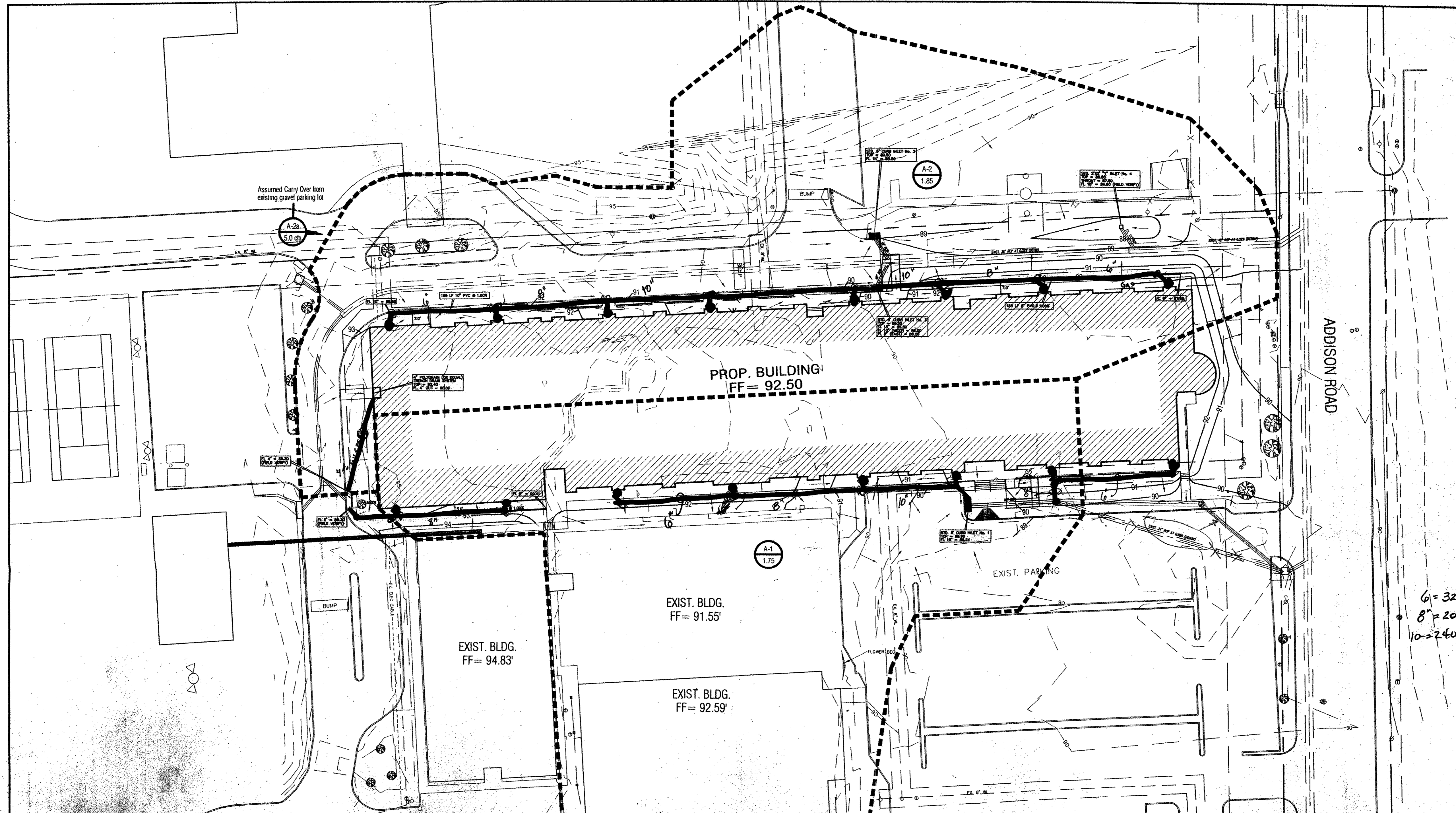
Signing Date: 02.28.02  
**dietz engineering**  
 811-e. plano parkway  
 suite 109  
 plano, texas 75074  
 voice: 972 633-8867  
 fax: 972 633-1327

Drawn By: LL  
 Checked By: RDD

Revisions:

No.	Date	Description

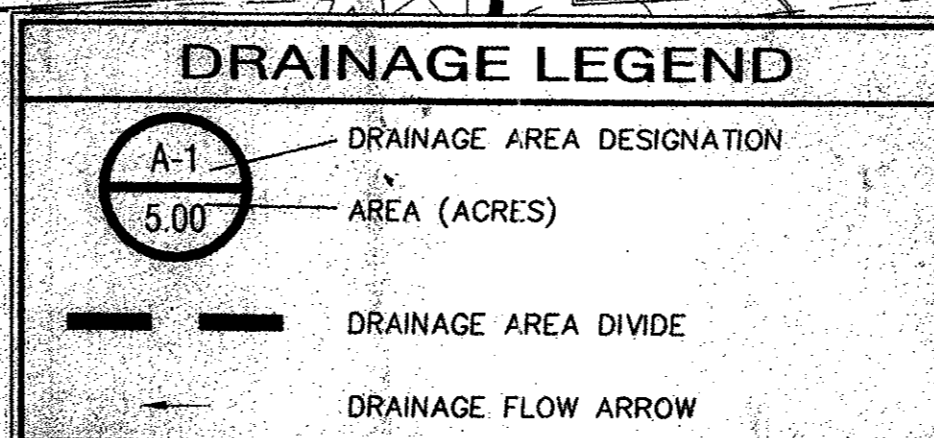
**TRINITY CHRISTIAN ACADEMY**  
 DRAINAGE AREA PLAN VIEW for the City of Addison, Texas  
 ELEMENTARY  
 1/29/02  
 "As-Built"



**LEGEND**

+ETP600.0	EX. TOP OF PVMT	⊗	WATER VALVE
+ETG600.0	EX. TOP OF GRND	⊕	UTILITY BOX
+ETC600.0	EX. TOP OF CURB	⊗	WOOD BOLLARD
+600.0	FIN. FLR. SPOT ELEV.	⊗	GAS METER
TP600.0	TOP OF PAVEMENT	⊗	CURB INLET
TC600.0	TOP OF CONCRETE	⊗	GRATE INLET
TC600.0	TOP OF GROUND	⊗	FIRE HYDRANT
600.0	TOP OF CURB	⊗	WATER METER
—650—	PROP. GRADE LINE	⊗	STORM/SS MANHOLE
—650—	EX. GRADE LINE	⊗	TREE
FF	FINISHED FLOOR	⊗	LIGHT POLE
↑	GUY WIRE ANCHOR	⊗	SIGNAL POLE
⊗	POWER POLE	⊗	SIGNAL PULL BOX
⊗	STREET/CABLE SIGN	⊗	

- GENERAL NOTES**
- SEE ARCHITECTURE PLANS FROM SBI ARCHITECTS FOR ALL DIMENSIONS, COORDINATES AND CONTROL POINTS.
  - SEE SHEET C1.03 "GRADING PLAN" FOR ALL SPOT GRADES AND PAVEMENT CONTOURS.
  - ALL WORK UNLESS OTHERWISE NOTED SHALL CONFORM TO THE STANDARD SPECIFICATIONS FOR PUBLIC WORKS CONSTRUCTION ISSUED BY THE NORTH CENTRAL TEXAS COUNCIL OF GOVERNMENTS, AND THE TOWN OF ADDISON PUBLIC WORKS DEPARTMENT STANDARD DETAILS AND SPECIFICATIONS FOR WATER AND SEWER FACILITIES.
  - THE HORIZONTAL AND VERTICAL LOCATION OF EXISTING SUBSURFACE UTILITIES HAVE BEEN DETERMINED FROM DATA RECORDED BY OTHERS. IT WILL BE THE RESPONSIBILITY OF THE CONTRACTOR TO PROTECT ALL PUBLIC UTILITIES IN THE CONSTRUCTION OF THIS PROJECT.
  - CONTRACTOR SHALL MAINTAIN ONE SET OF "AS-BUILT" DRAWINGS ON SITE WHICH WILL BE SUBMITTED TO THE OWNER OR ENGINEER UPON COMPLETION OF THE PROJECT. "AS-BUILTS" SHALL DEPICT ALL DIFFERING CONSTRUCTION.
  - CONTRACTOR SHALL CALL 1-800-DIG-TESS TO HAVE U.G. LSG, SWMT AND TU FACILITIES LOCATED.
  - ALL WATER MAINS SHALL BE PVC C909, DR 18, CLASS 200.
  - ALL SANITARY SEWER MAINS SHALL BE PVC SDR-35.
  - CONTRACTOR IS RESPONSIBLE FOR COMPLIANCE WITH ALL FEDERAL, STATE AND LOCAL REGULATIONS REGARDING TRENCH SAFETY.
  - FOR QUESTIONS REGARDING THE PROPOSED ELECTRIC SERVICE EASEMENT, PLEASE CONTACT STEVE LAUGHLIN AT TXU (972)323-8921.



**DRAINAGE SUMMARY TABLE:**

DRAINAGE AREA NO.	AREA (Acres)	L (Time Cons)	C <sub>Design</sub>	I <sub>10</sub> (in./hr.)	I <sub>24</sub> (in./hr.)	I <sub>30</sub> (in./hr.)	Q <sub>10</sub> (cfs)	Q <sub>24</sub> (cfs)	Q <sub>30</sub> (cfs)	REMARKS
A-1	1.75	10	0.70	5.76	8.76	10.50	7.06	10.73	12.86	ROOF/SURFACE FLOW RUNOFF
A-2	1.85	10	0.70	5.76	8.76	10.50	7.46	11.34	13.60	ROOF/SURFACE FLOW RUNOFF
A-2a									5.00	Runoff from well gravel pit

**INLET SUMMARY TABLE:**

INLET NO.	INLET LOCATION (Access)	DRAINAGE AREA No.	GRADE AT INLET (%)	STREET CAPACITY (CFS)	GUTTER FLOW (CFS)	CARRY OVER FROM U.S. (CFS)	TOTAL FLOW (CFS)	INLET SIZE (FEET)	INLET CAPACITY AT 1/4" = 0.50" (CFS)
1	Main Entrance	A-1	Lowpoint	9.50	12.86	0.00	12.86	8 (C.I.)	17.0
2	End Drive 'A' - North	A-2	Lowpoint	9.50	6.80	2.50	9.30	6 (C.I.)	12.8
3	End Drive 'A' - South	A-2	Lowpoint	9.50	6.80	2.50	9.30	6 (C.I.)	12.8
4	South of Playground	A-2	Lowpoint	9.50	By-Pass 2 & 3	0.00	0.00	2 X 2' 0"	8.0



NORTH

24"x36" Scale: 1" = 30'  
 11"x17" Scale: 1" = 60'  
 Vertical Scale: NA

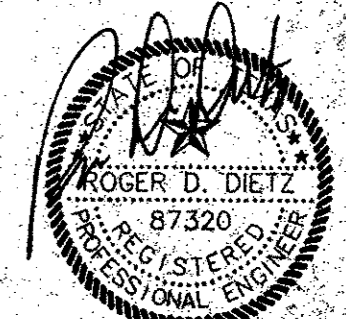
Project Number:  
 Issue Date: 28 FEB 2001  
 Sheet Title: **DRAINAGE AREA PLAN**  
 Sheet No.: **C1.04**



# AS BUILTS

BEAR CREEK CONSTR.  
E. W. HILL 1-2-02

**dietz  
engineering**



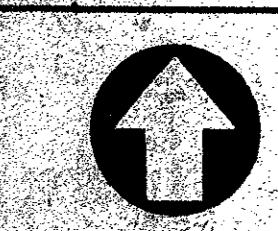
Signing Date: 02.28.02

**dietz engineering**  
811 e. plano parkway  
suite 109  
plano, texas 75074  
voice: 972 633-8867  
fax: 972 633-1327

Drawn By: LL  
Checked By: RDD

Revisions:	No.	Date	Description

**TRINITY CHRISTIAN ACADEMY**  
 DRAINAGE AREA  
 PLAN VIEW  
 for the  
 City of Addison, Texas



NORTH

24"x36" Scale: 1" = 30'

11"x17" Scale: 1" = 60'

Vertical Scale: NA

Project Number:

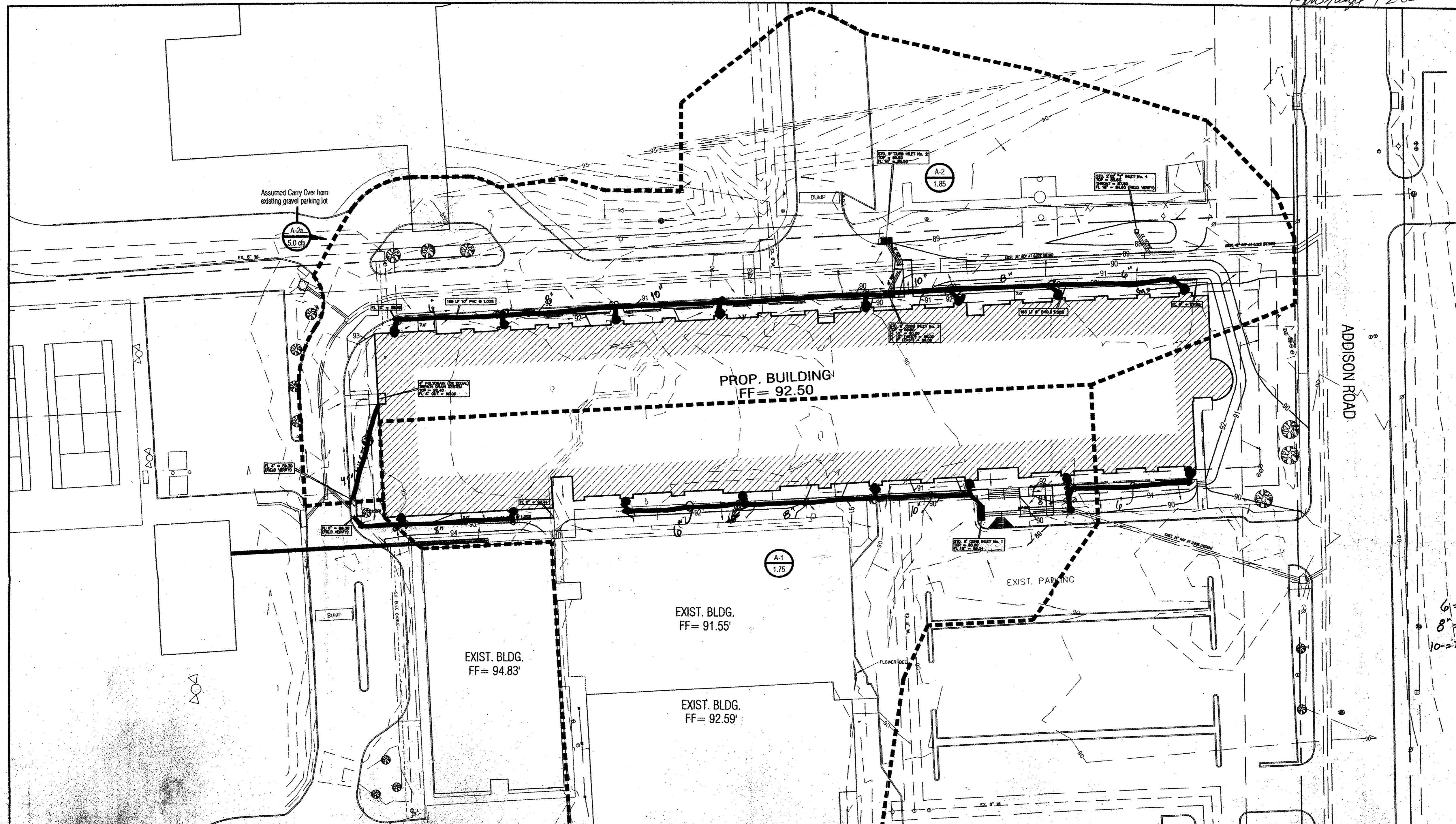
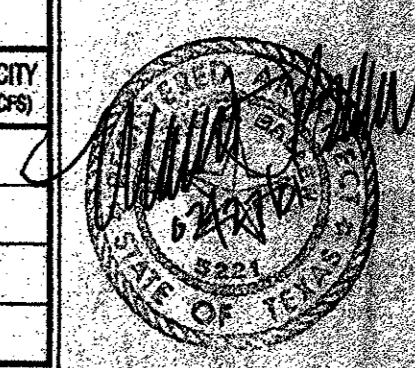
Issue Date: 28 FEB 2002

Sheet Title:

**DRAINAGE AREA PLAN**

Sheet No.:

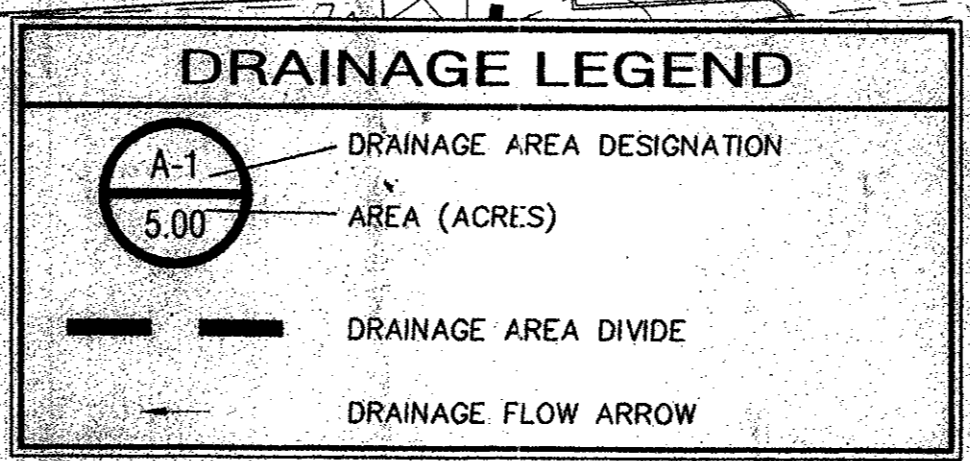
**C1.04**



LEGEND			
+E1P600.0	EX. TOP OF PYMT.	⊗	WATER VALVE
+E1B600.0	EX. TOP OF GRND.	⊗	UTILITY BOX
+E1C600.0	EX. TOP OF CURB	⊗	WOOD BOLLARD
+600.0	FIN. FLR. SPOT ELEV.	⊗	GAS METER
TP600.0	TOP OF PAVEMENT	⊗	CURB INLET
TC600.0	TOP OF CONCRETE	⊗	GRATE INLET
TC600.0	TOP OF GROUND	⊗	FIRE HYDRANT
600.0	TOP OF CURB	⊗	WATER METER
— 600 —	PROP. GRADE LINE	⊗	STORM/SS MANHOLE
— 650 —	EX. GRADE LINE	⊗	TREE
FF	FINISHED FLOOR	⊗	LIGHT POLE
↑	GUY WIRE ANCHOR	⊗	SIGNAL POLE
⊕	POWER POLE	⊗	SIGNAL PULL BOX
⊕	STREET/CABLE SIGN		

**GENERAL NOTES**

- SEE ARCHITECTURE PLANS FROM SBI ARCHITECTS FOR ALL DIMENSIONS, COORDINATES AND CONTROL POINTS.
- SEE SHEET C1.03 "GRADING PLAN" FOR ALL SPOT GRADES AND PAVEMENT CONTOURS.
- ALL WORK UNLESS OTHERWISE NOTED SHALL CONFORM TO THE STANDARD SPECIFICATIONS FOR PUBLIC WORKS CONSTRUCTION ISSUED BY THE NORTH CENTRAL TEXAS COUNCIL OF GOVERNMENTS, AND THE TOWN OF ADDISON PUBLIC WORKS DEPARTMENT STANDARD DETAILS AND SPECIFICATIONS FOR WATER AND SEWER FACILITIES.
- THE HORIZONTAL AND VERTICAL LOCATION OF EXISTING SUBSURFACE UTILITIES HAVE BEEN DETERMINED FROM DATA RECORDED BY OTHERS. IT WILL BE THE RESPONSIBILITY OF THE CONTRACTOR TO PROTECT ALL PUBLIC UTILITIES IN THE CONSTRUCTION OF THIS PROJECT.
- CONTRACTOR SHALL MAINTAIN ONE SET OF "AS-BUILT" DRAWINGS ON SITE WHICH WILL BE SUBMITTED TO THE OWNER OR ENGINEER UPON COMPLETION OF THE PROJECT. "AS-BUILTS" SHALL DEPICT ALL DIFFERING CONSTRUCTION.
- CONTRACTOR SHALL CALL 1-800-DIG-TESS TO HAVE U.G. LSC, SMTB AND TU FACILITIES LOCATED.
- ALL WATER MAINS SHALL BE PVC C909, DR 18, CLASS 200.
- ALL SANITARY SEWER MAINS SHALL BE PVC SDR-35.
- CONTRACTOR IS RESPONSIBLE FOR COMPLIANCE WITH ALL FEDERAL, STATE AND LOCAL REGULATIONS REGARDING TRENCH SAFETY.
- FOR QUESTIONS REGARDING THE PROPOSED ELECTRIC SERVICE EASEMENT, PLEASE CONTACT STEVE LAUGHLIN AT TXU (972)323-8921.



**DRAINAGE SUMMARY TABLE:**

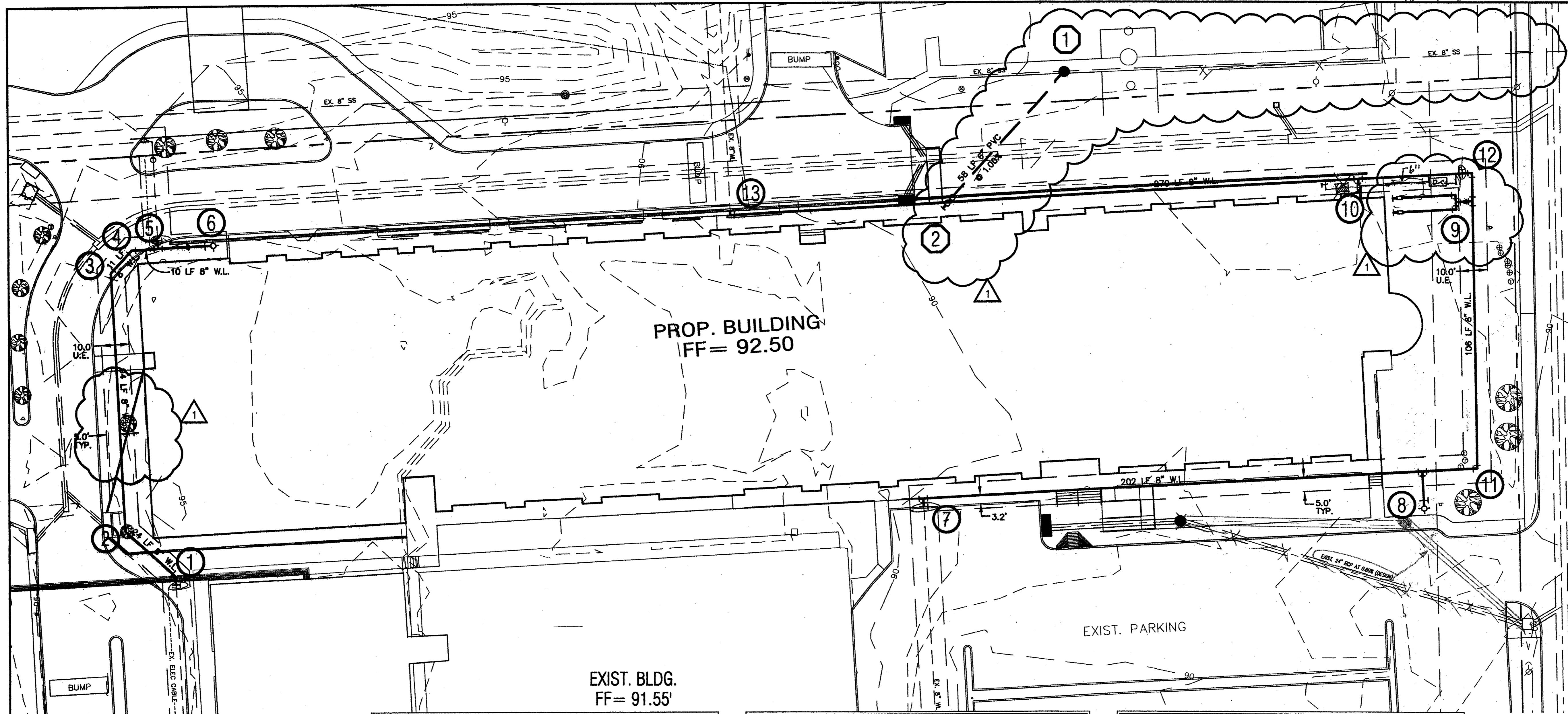
DRAINAGE AREA NO.	AREA (Acres)	L <sub>s</sub> (Time Conc)	C <sub>s</sub> Design	I <sub>s</sub> (in./hr.)	I <sub>u</sub> (in./hr.)	I <sub>m</sub> (in./hr.)	Q <sub>s</sub> (cfs)	Q <sub>u</sub> (cfs)	Q <sub>m</sub> (cfs)	REMARKS
A-1	1.75	10	0.70	5.76	8.76	10.50	7.06	10.73	12.86	ROOF/SURFACE FLOW RUNOFF
A-2	1.85	10	0.70	5.76	8.76	10.50	7.46	11.34	13.60	ROOF/SURFACE FLOW RUNOFF
A-2a								5.00		Runoff from west gravel p-lot

**INLET SUMMARY TABLE:**

INLET NO.	INLET LOCATION (Notes)	DRAINAGE AREA No.	GRADE AT INLET (%)	STREET CAPACITY (CFS)	GUTTER FLOW (CFS)	CARRY OVER FROM U.S. (CFS)	TOTAL FLOW (CFS)	INLET SIZE (FEET)	INLET CAPACITY AT 1/4" (CFS)
1	Main Entrance	A-1	Lowpoint	9.50	12.86	0.00	12.86	8 (C.L.)	17.0
2	End Drive 'A' - North	A-2	Lowpoint	9.50	6.80	2.50	9.30	6 (C.L.)	12.8
3	End Drive 'A' - South	A-2	Lowpoint	9.50	6.80	2.50	9.30	6 (C.L.)	12.8
4	South of Playground	A-2	Lowpoint	9.50	By-Pass 2 & 3	0.00	0.00	2 X 2'-0"	8.0



BEAR CREEK CONSTR  
1-2-02



**WARNING !!!**  
FIELD VERIFY EXISTING UNDERGROUND  
UTILITY LOCATIONS PRIOR TO  
CONSTRUCTION OR EXCAVATION.

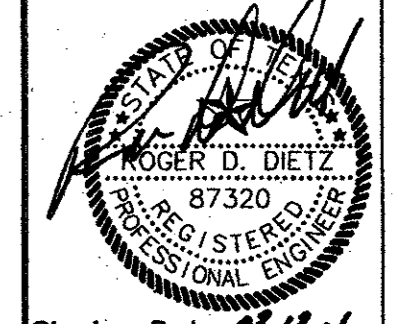
LEGEND			
+ETP600.0	EX. TOP OF PVMT.	⊗	WATER VALVE
+ETG600.0	EX. TOP OF GRND.	⊠	UTILITY BOX
+ETC600.0	EX. TOP OF CURB	⊙	WOOD BOLLARD
+600.0	FIN.FLR. SPOT ELEV.	⊙	GAS METER
TP600.0	TOP OF PAVEMENT	⊠	CURB INLET
TC600.0	TOP OF CONCRETE	⊠	GRATE INLET
TC600.0	TOP OF GROUND	⊙	FIRE HYDRANT
600.0	TOP OF CURB	⊙	WATER METER
—650—	PROP. GRADE LINE	⊙	STORM/SS MANHOLE
—650—	EX. GRADE LINE	⊙	TREE
FF	FINISHED FLOOR	⊙	LIGHT POLE
↑	GUY WIRE ANCHOR	⊙	SIGNAL POLE
⊕	POWER POLE	⊙	SIGNAL PULL BOX
⊕	STREET/CABLE SIGN		

SANITARY SEWER NOTATION	
①	INSTALL: STD. 4.0' DIA. MANHOLE IN LINE WITH EXISTING 8" SS LINE TOP = 89.0 EX. 8" IN = 80.50 (FIELD VERIFY) EX. 8" OUT = 80.40 (FIELD VERIFY) 6" FL = 80.50
②	SEE MEP PLANS FOR CONTINUATION 5.0' FROM BUILDING EDGE STD. DOUBLE 6" CLEANOUT 6" FL = 81.08

WATER NOTATION	
①	CUT AND REMOVE EXISTING 8" W.L. INSTALL: 1 - 8" 45° BEND ② - 8" GATE VALVE THRUST BLOCKING
②	INSTALL: 1 - 8" 45° BEND THRUST BLOCKING
③	INSTALL: 1 - 8" 45° BEND THRUST BLOCKING
④	INSTALL: 1 - 8" 45° BEND THRUST BLOCKING
⑤	CUT AND REMOVE EXISTING 8" W.L. INSTALL: ② - 8" GATE VALVE 1 - 8" TEE THRUST BLOCKING
⑥	INSTALL: 1 - 8"x6" REDUCER 20 LF 8" W.L. 1 - 6" GATE VALVE 1 - FIRE HYDRANT THRUST BLOCKING
⑦	CUT AND REMOVE EXISTING 8" W.L. INSTALL: 1 - 8"x8" TEE ② - 8" GATE VALVE 1 - 8" PLUG THRUST BLOCKING
⑧	INSTALL: 1 - 8"x8" TEE 13 LF 8" W.L. 1 - 6" GATE VALVE 1 - FIRE HYDRANT THRUST BLOCKING
⑨	INSTALL: 1 - 8"x4" TEE 1 - 4" to 2" REDUCER 1 - 2"x2" TEE 2 - 2" 90° BENDS 52 LF 2" DOM. WATER SERVICE 2 - 2" WATER METERS SEE MEP PLANS FOR CONTINUATION
⑩	INSTALL: 1 - TEE 1 - REDUCER 5 LF FIRE LINE TO BE SIZED BY A LICENSED FIRE INSPECTOR 1 - DBL. DETECTOR CHECK VALVE SEE MEP PLANS FOR CONTINUATION
⑪	INSTALL: 1 - 8" 90° BEND THRUST BLOCKING
⑫	INSTALL: 1 - 8" 90° BEND ② - 8" GATE VALVE THRUST BLOCKING
⑬	CUT AND REMOVE EXISTING 8" W.L. INSTALL: 1 - 8" 90° BEND THRUST BLOCKING

GENERAL NOTES	
1.	FIRE LINE TO BE SIZED AND INSTALLED BY A STATE LICENSED FIRE SPRINKLER CONTRACTOR.
2.	SEE SHEET C1.03 "GRADING PLAN" FOR ALL SPOT GRADES AND PAVEMENT CONTOURS.
3.	ALL WORK UNLESS OTHERWISE NOTED SHALL CONFORM TO THE STANDARD SPECIFICATIONS FOR PUBLIC WORKS CONSTRUCTION ISSUED BY THE NORTH CENTRAL TEXAS COUNCIL OF GOVERNMENTS, AND THE CITY OF ADDISON UTILITIES DEPARTMENT STANDARD DETAILS AND SPECIFICATIONS FOR WATER AND SEWER FACILITIES.
4.	THE HORIZONTAL AND VERTICAL LOCATION OF EXISTING SUBSURFACE UTILITIES HAVE BEEN DETERMINED FROM DATA RECORDED BY OTHERS. IT WILL BE THE RESPONSIBILITY OF THE CONTRACTOR TO PROTECT ALL PUBLIC UTILITIES DURING CONSTRUCTION OF THE PROJECT.
5.	CONTRACTOR SHALL MAINTAIN ONE SET OF "AS-BUILT" DRAWINGS ON SITE WHICH WILL BE SUBMITTED TO THE OWNER OR ENGINEER UPON COMPLETION OF THE PROJECT. "AS-BUILTS" SHALL DEPICT ALL DIFFERING CONSTRUCTION.
6.	CONTRACTOR SHALL CALL 1-800-DIG-TESS TO HAVE U.G. LSG, SWBT AND TU FACILITIES LOCATED.
7.	ALL WATER MAINS SHALL BE PVC C900, DR 18, CLASS 150.
8.	ALL SANITARY SEWER MAINS SHALL BE PVC SDR-35.
9.	CONTRACTOR IS RESPONSIBLE FOR COMPLIANCE WITH ALL FEDERAL, STATE AND LOCAL REGULATIONS REGARDING TRENCH SAFETY.

**dietz engineering**



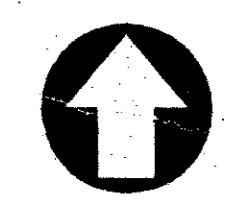
Signing Date: 03/15/01

**dietz engineering**  
811 e. plano parkway  
suite 109  
plano, texas 75074  
voice: 972 633-8467  
fax: 972 633-1327

Drawn By: LLL  
Checked By: RDD

Revisions:		
No.	Date	Description
1	03/12/01	WATER/SEWER

**TRINITY CHRISTIAN ACADEMY**  
WATER / SANITARY SEWER  
PLAN VIEW  
for the  
City of Addison, Texas



NORTH

24"x36" Scale: 1" = 20'

11"x17" Scale: 1" = 40'

Vertical Scale: NA

Project Number:

Issue Date: 28 FEB 2001

Sheet Title:  
**UTILITY PLAN**

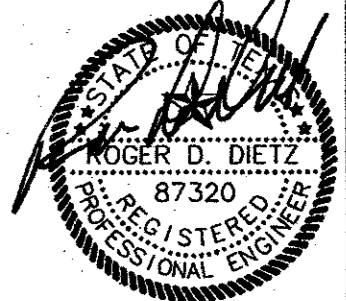
Sheet No.:

**C1.06**



**AS BUILTS**  
 BOAR CREEK CONSTR.  
 5/27/12

**dietz engineering**

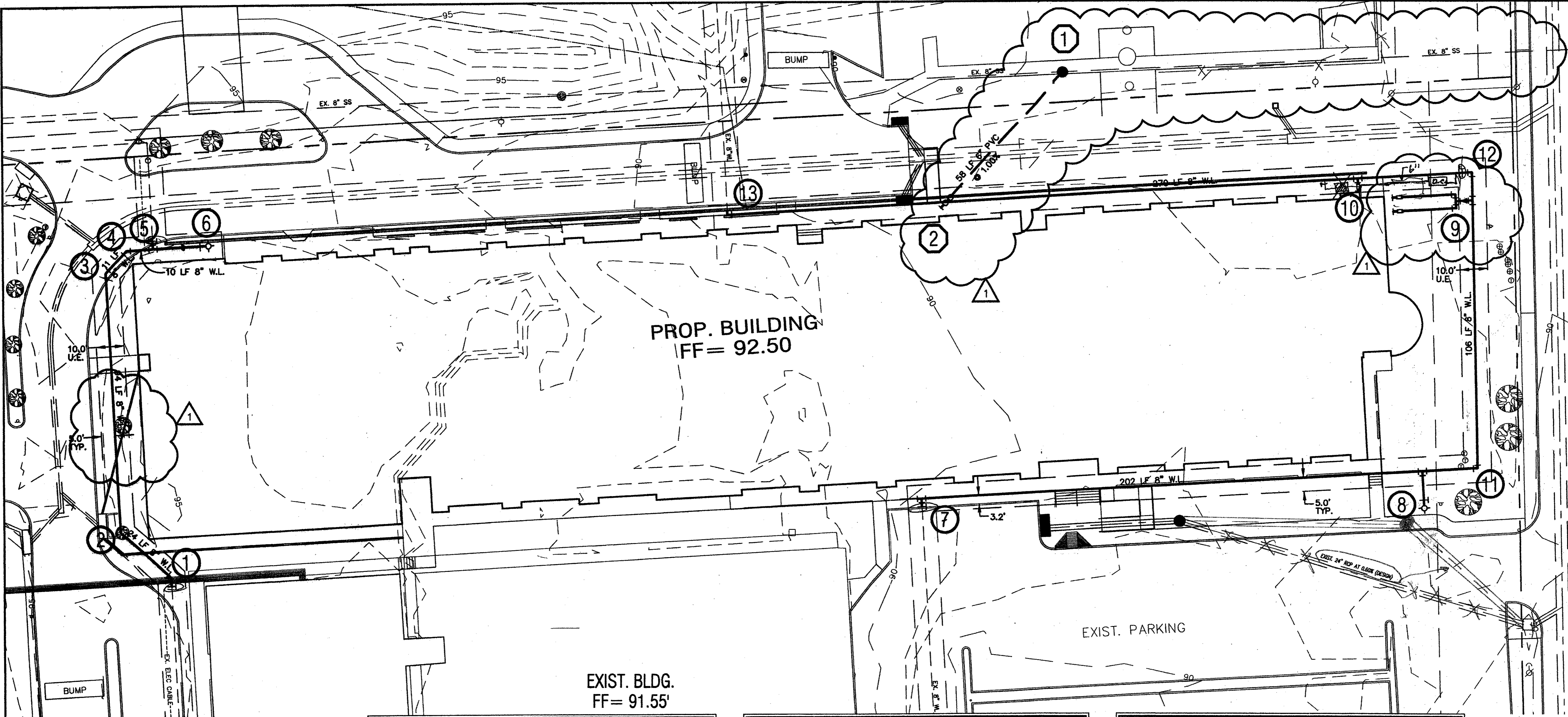


Signing Date: 03/12/11  
**dietz engineering**  
 811 e. plano parkway  
 suite 109  
 plano, texas 75074  
 voice: 972 633-8867  
 fax: 972 633-1327

Drawn By: LL  
 Checked By: RDD  
 Revisions:  

No.	Date	Description
1	03/12/11	WATER/SEWER

**TRINITY CHRISTIAN ACADEMY**  
 WATER / SANITARY SEWER  
 PLAN VIEW  
 for the  
 City of Addison, Texas



**WARNING !!!**  
 FIELD VERIFY EXISTING UNDERGROUND  
 UTILITY LOCATIONS PRIOR TO  
 CONSTRUCTION OR EXCAVATION.

LEGEND			
+ETP600.0	EX. TOP OF PVMT.	⊗	WATER VALVE
+ETG600.0	EX. TOP OF GRND.	⊠	UTILITY BOX
+ETC600.0	EX. TOP OF CURB	⊙	WOOD BOLLARD
+600.0	FIN. FLR. SPOT ELEV.	⊙	GAS METER
TP600.0	TOP OF PAVEMENT	⊠	CURB INLET
TC600.0	TOP OF CONCRETE	⊠	GRATE INLET
TG600.0	TOP OF GROUND	⊙	FIRE HYDRANT
600.0	TOP OF CURB	⊙	WATER METER
---	PROP. GRADE LINE	⊙	STORM/SS MANHOLE
-650-	EX. GRADE LINE	⊙	TREE
FF	FINISHED FLOOR	⊙	LIGHT POLE
↑	GUY WIRE ANCHOR	⊙	SIGNAL POLE
⊙	POWER POLE	⊙	SIGNAL PULL BOX
P	STREET/CABLE SIGN		

SANITARY SEWER NOTATION	
①	INSTALL: STD. 4.0' DIA. MANHOLE INLINE WITH EXISTING 8" SS LINE TOP = 89.0 EX. 8" IN = 80.50 (FIELD VERIFY) EX. 8" OUT = 80.40 (FIELD VERIFY) 6" FL = 80.50
②	SEE MEP PLANS FOR CONTINUATION 5.0' FROM BUILDING EDGE STD. DOUBLE 6" CLEANOUT 6" FL = 81.08

WATER NOTATION	
①	CUT AND REMOVE EXISTING 8" W.L. INSTALL: 1 - 8" 45° BEND ④ - 8" GATE VALVE THRUST BLOCKING
②	INSTALL: 1 - 8" 45° BEND THRUST BLOCKING
③	INSTALL: 1 - 8" 45° BEND THRUST BLOCKING
④	INSTALL: 1 - 8" 45° BEND THRUST BLOCKING
⑤	CUT AND REMOVE EXISTING 8" W.L. INSTALL: ④ - 8" GATE VALVE 1 - 8"x8" TEE THRUST BLOCKING
⑥	INSTALL: 1 - 8"x8" REDUCER 20 LF 6" W.L. 1 - 6" GATE VALVE 1 - FIRE HYDRANT THRUST BLOCKING
⑦	CUT AND REMOVE EXISTING 8" W.L. INSTALL: 1 - 8"x8" TEE ④ - 8" GATE VALVE 1 - 8" PLUG THRUST BLOCKING
⑧	INSTALL: 1 - 8"x8" TEE 13 LF 8" W.L. 1 - 6" GATE VALVE 1 - FIRE HYDRANT THRUST BLOCKING
⑨	INSTALL: 1 - 8"x4" TEE 1 - 4" to 2" REDUCER 1 - 2"x2" TEE 2 - 2" 90° BENDS 52 LF 2" DOM. WATER SERVICE 2 - 2" WATER METERS SEE MEP PLANS FOR CONTINUATION
⑩	INSTALL: 1 - TEE 1 - REDUCER 5 LF FIRE LINE TO BE SIZED BY A LICENSED FIRE INSPECTOR 1 - DBL DETECTOR CHECK VALVE SEE MEP PLANS FOR CONTINUATION
⑪	INSTALL: 1 - 8" 90° BEND THRUST BLOCKING
⑫	INSTALL: 1 - 8" 90° BEND ④ - 8" GATE VALVE THRUST BLOCKING
⑬	CUT AND REMOVE EXISTING 8" W.L. INSTALL: 1 - 8" 90° BEND THRUST BLOCKING

GENERAL NOTES	
1.	FIRE LINE TO BE SIZED AND INSTALLED BY A STATE LICENSED FIRE SPRINKLER CONTRACTOR.
2.	SEE SHEET C1.03 "GRADING PLAN" FOR ALL SPOT GRADES AND PAVEMENT CONTOURS.
3.	ALL WORK UNLESS OTHERWISE NOTED SHALL CONFORM TO THE STANDARD SPECIFICATIONS FOR PUBLIC WORKS CONSTRUCTION ISSUED BY THE NORTH CENTRAL TEXAS COUNCIL OF GOVERNMENTS, AND THE CITY OF ADDISON UTILITIES DEPARTMENT STANDARD DETAILS AND SPECIFICATIONS FOR WATER AND SEWER FACILITIES.
4.	THE HORIZONTAL AND VERTICAL LOCATION OF EXISTING SUBSURFACE UTILITIES HAVE BEEN DETERMINED FROM DATA RECORDED BY OTHERS. IT WILL BE THE RESPONSIBILITY OF THE CONTRACTOR TO PROTECT ALL PUBLIC UTILITIES DURING CONSTRUCTION OF THE PROJECT.
5.	CONTRACTOR SHALL MAINTAIN ONE SET OF "AS-BUILT" DRAWINGS ON SITE WHICH WILL BE SUBMITTED TO THE OWNER OR ENGINEER UPON COMPLETION OF THE PROJECT. "AS-BUILTS" SHALL DEPICT ALL DIFFERING CONSTRUCTION.
6.	CONTRACTOR SHALL CALL 1-800-DIG-TESS TO HAVE U.G. LSG, SWBT AND TU FACILITIES LOCATED.
7.	ALL WATER MAINS SHALL BE PVC C900, DR 18, CLASS 150.
8.	ALL SANITARY SEWER MAINS SHALL BE PVC SDR-35.
9.	CONTRACTOR IS RESPONSIBLE FOR COMPLIANCE WITH ALL FEDERAL, STATE AND LOCAL REGULATIONS REGARDING TRENCH SAFETY.



24"x36" Scale: 1" = 20'  
 11"x17" Scale: 1" = 40'  
 Vertical Scale: NA  
 Project Number:  
 Issue Date: 28 FEB 2011  
 Sheet Title:  
**UTILITY PLAN**  
 Sheet No.:

**C1.06**