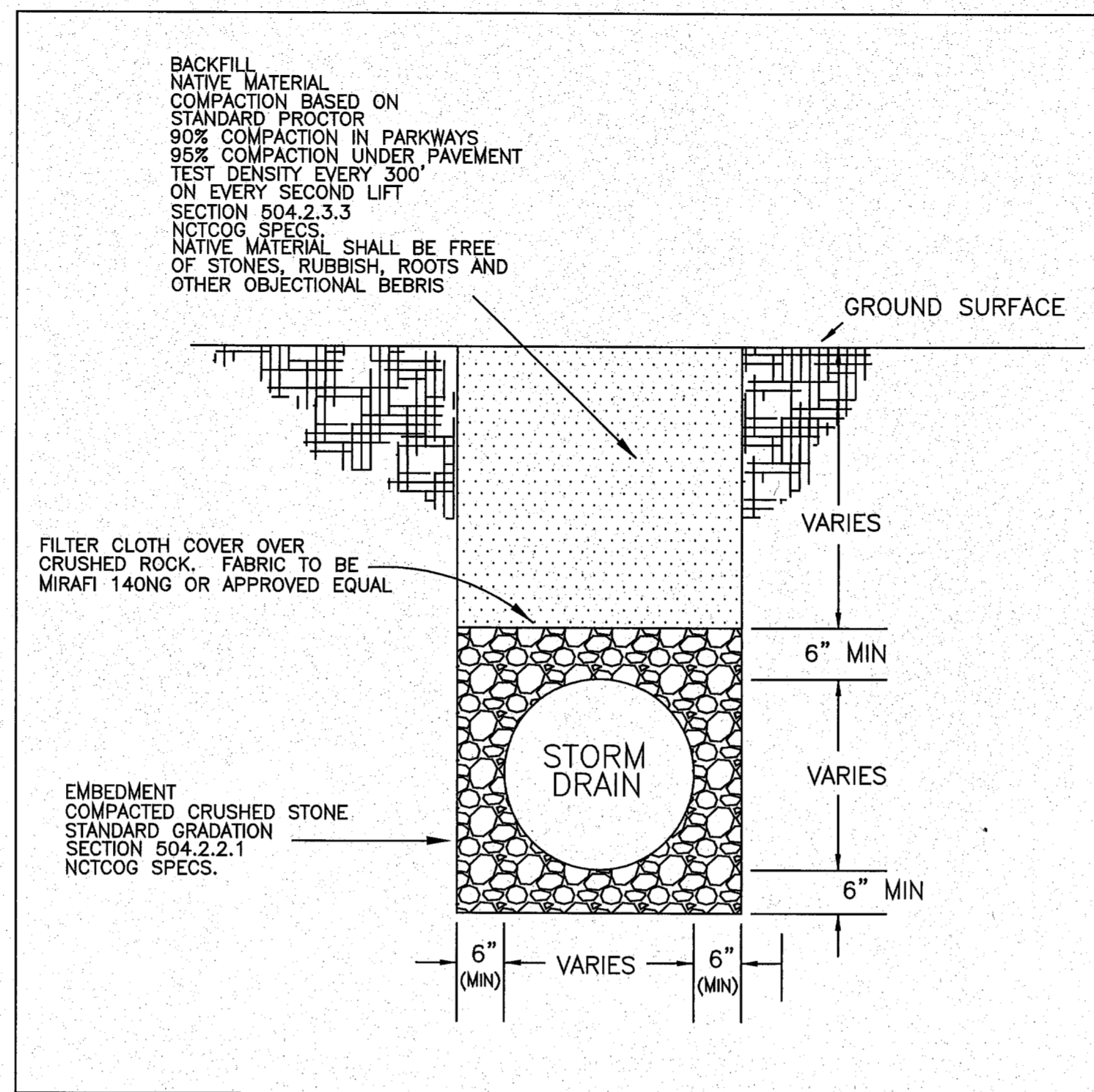


* REMOVAL OF PLUG FROM EXISTING RCP TO BE ACCOMPLISHED BY USING A MASONRY DRILL AT A SPACING EQUAL TO THE DRILL BIT DIAMETER IN A CIRCULAR PATTERN OR A MASONRY SAW IN AN OCTAGONAL PATTERN PER DETAIL.

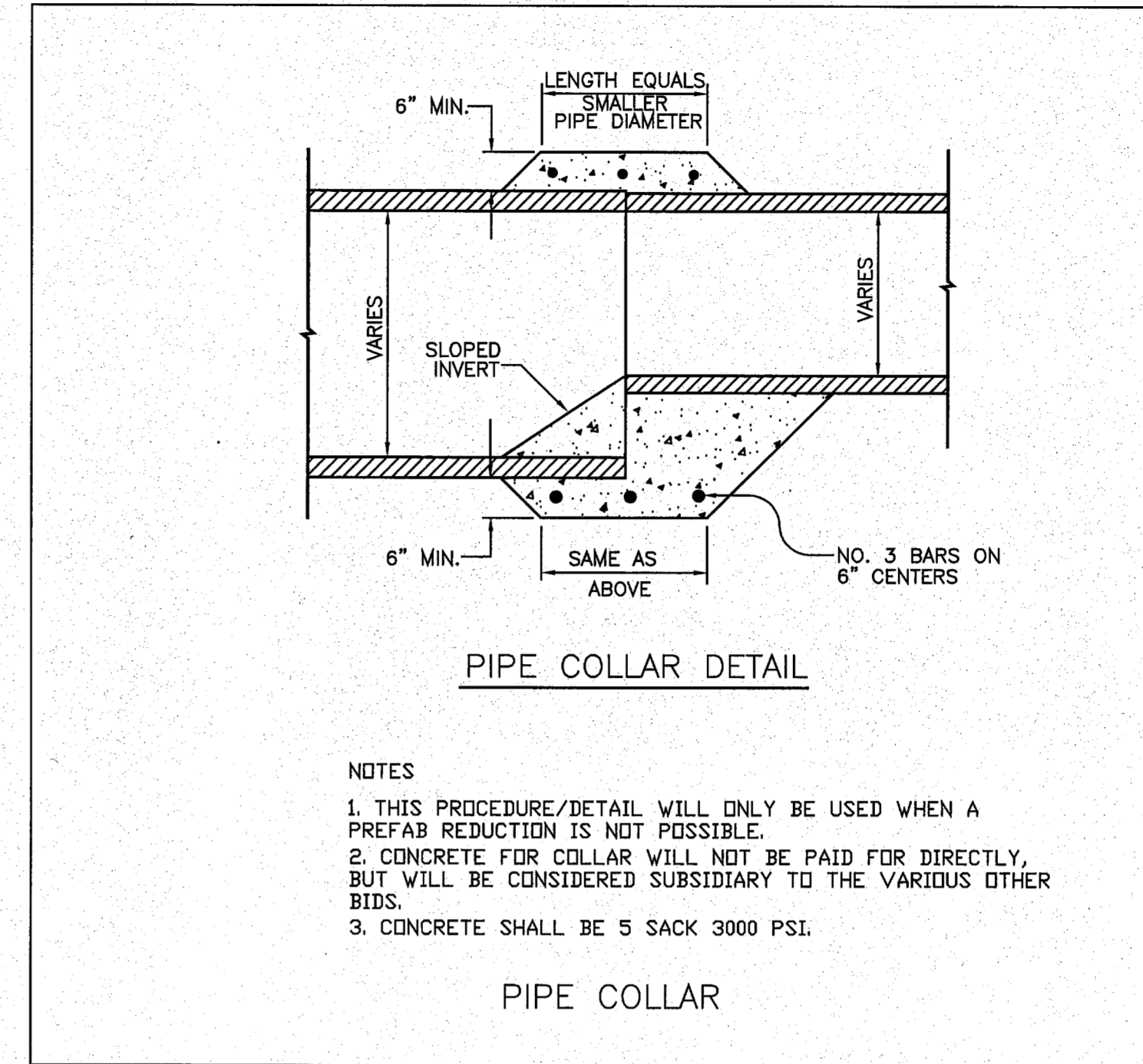


STORM DRAIN CONNECTION TO EXISTING RCP
NTS

THIS DETAIL APPLICABLE ONLY FOR APPLICATIONS WHERE NEW PIPE IS LESS THAN OR EQUAL TO ONE HALF THE DIAMETER OF THE EXISTING PIPE. FOR APPLICATIONS WHERE THE NEW PIPE IS GREATER THAN HALF THE SIZE OF THE EXISTING PIPE, A PREFABRICATED WYE SHALL BE USED.

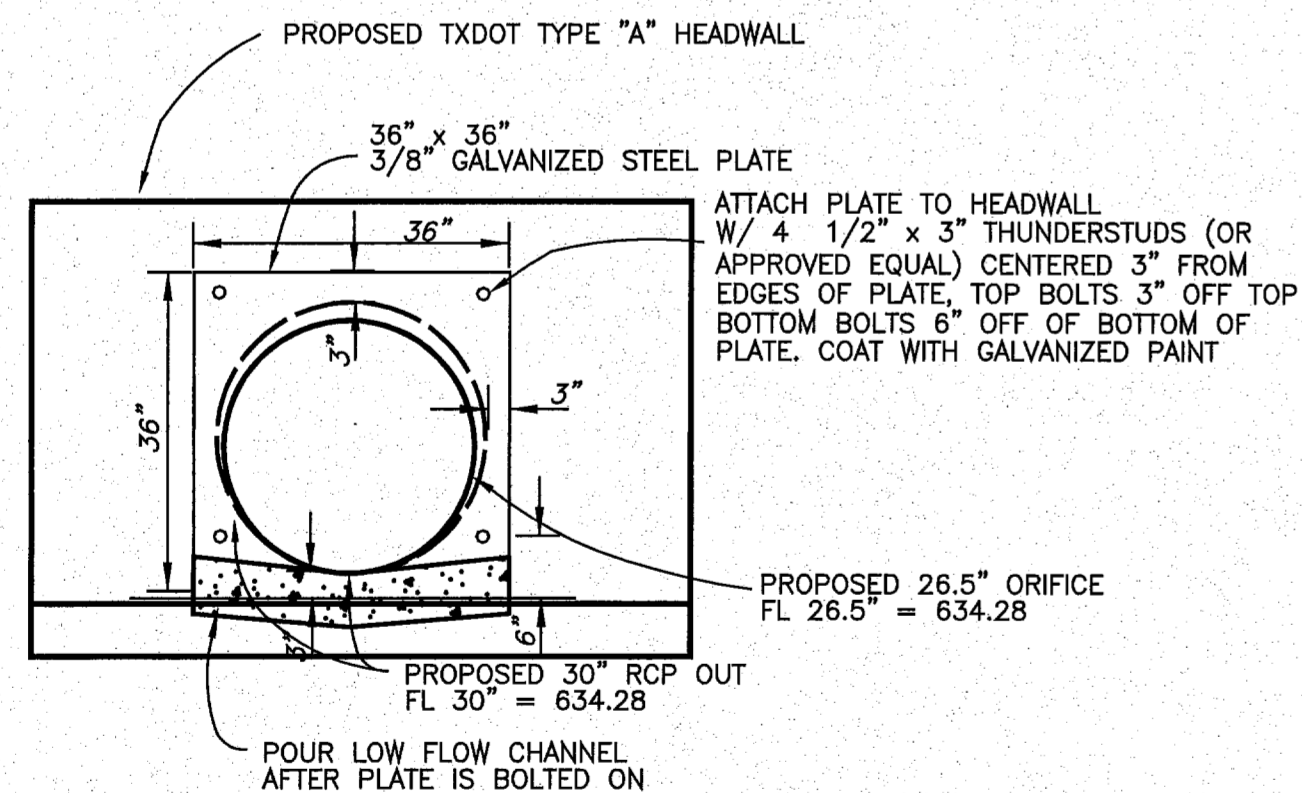


STORM DRAIN EMBEDMENT

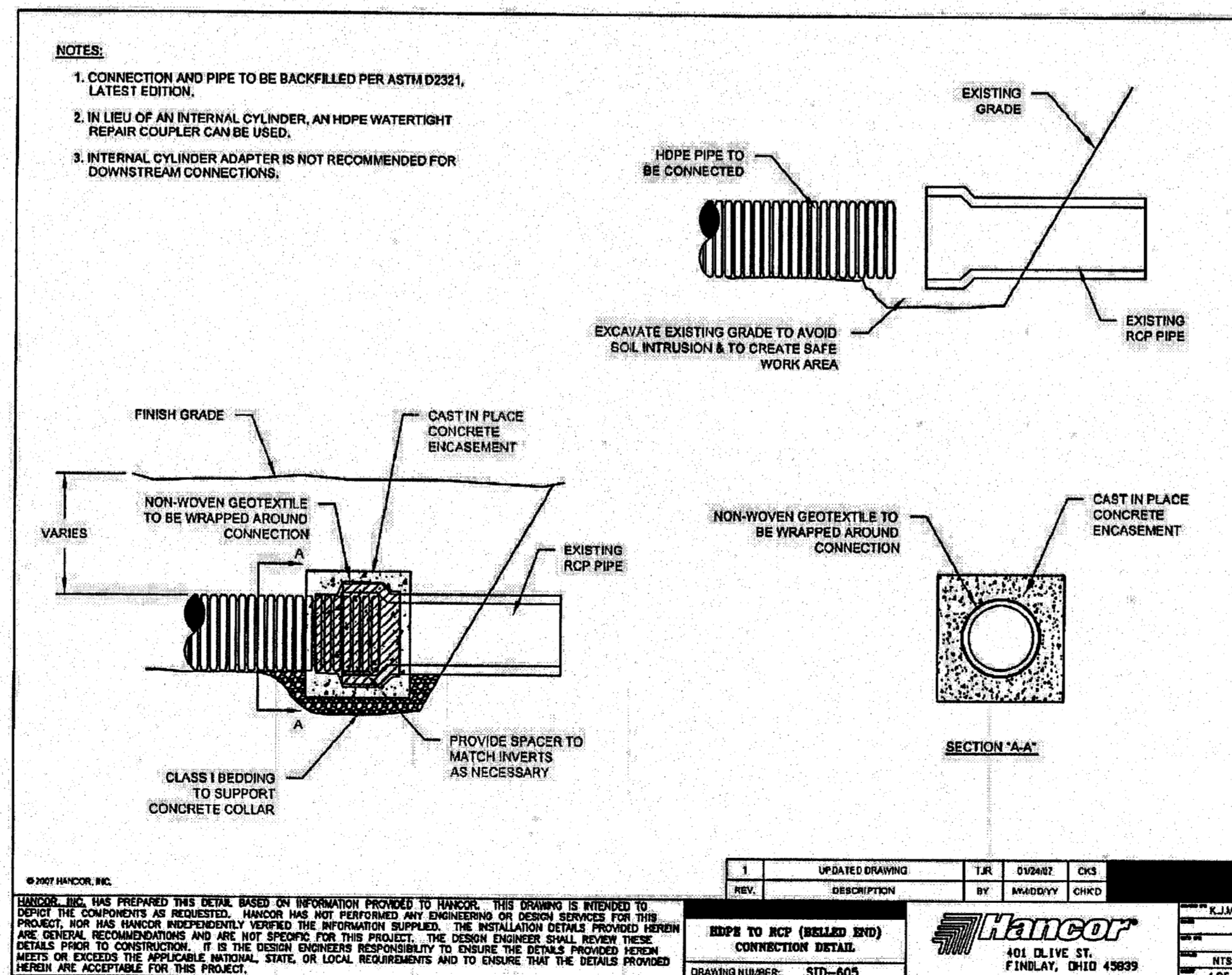


NOTES
1. THIS PROCEDURE/DETAIL WILL ONLY BE USED WHEN A PREFABRICATED COLLAR IS NOT POSSIBLE.
2. CONCRETE FOR COLLAR WILL NOT BE PAID FOR DIRECTLY, BUT WILL BE CONSIDERED SUBSIDIARY TO THE VARIOUS OTHER BIDS.
3. CONCRETE SHALL BE 5 SACK 3000 PSI.

PIPE COLLAR

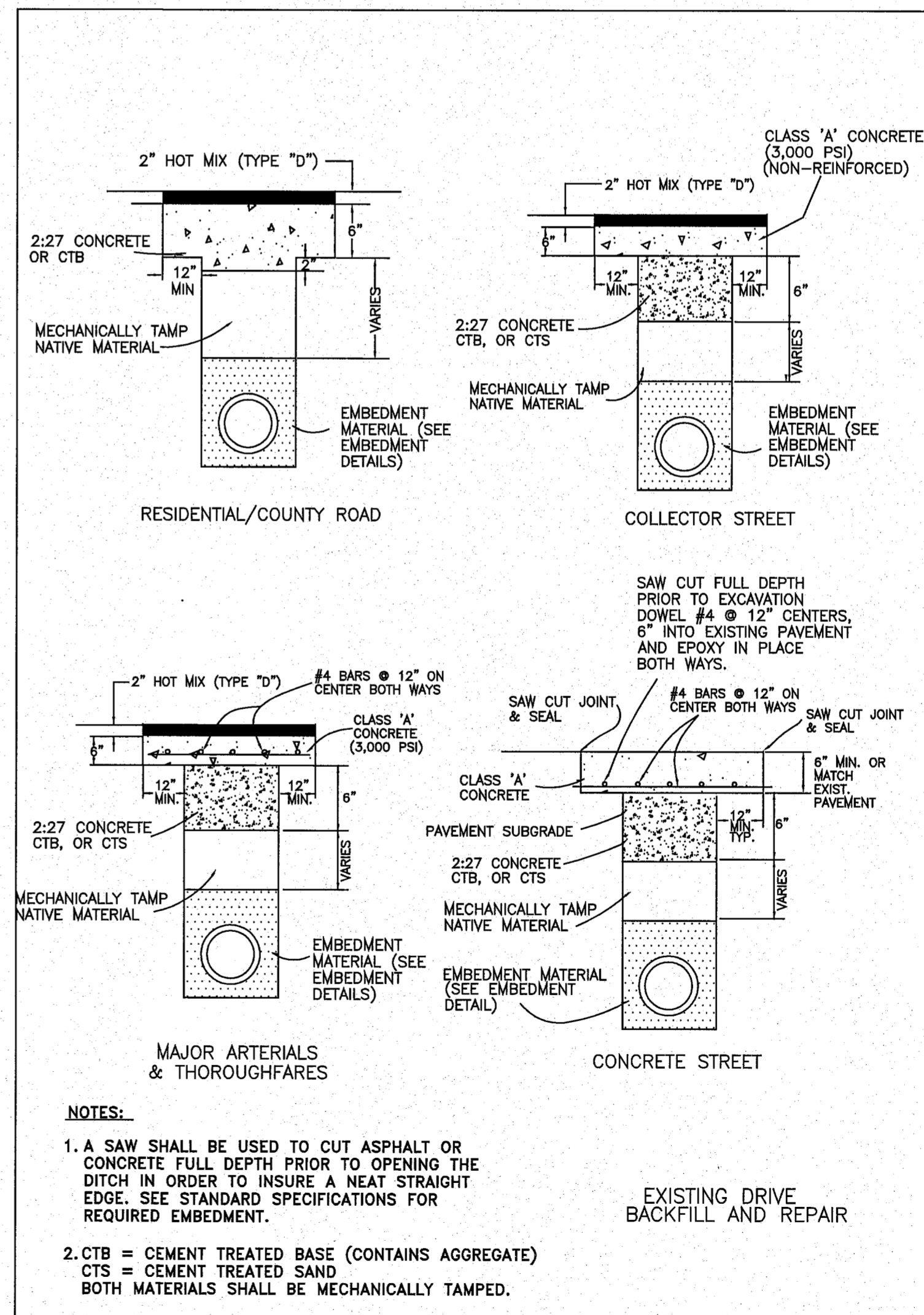


ORIFICE PLATE DETAIL



REV.	DESCRIPTION	BY	DATE	CHKD.
1	UPDATED DRAWING	TR	02/04/12	CKG
2	PIPE TO RCP (BELL END) CONNECTION DETAIL	MA	02/05/12	CKG

DRAWING NUMBER: STD-605

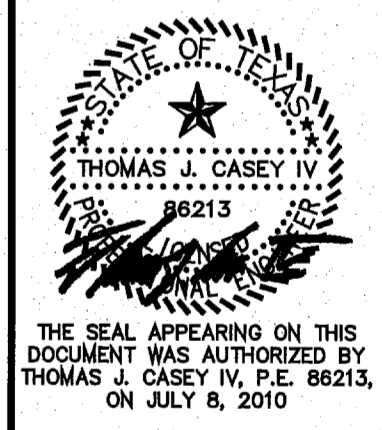


NOTES:
1. A SAW SHALL BE USED TO CUT ASPHALT OR CONCRETE FULL DEPTH PRIOR TO OPENING THE DITCH IN ORDER TO INSURE A NEAT STRAIGHT EDGE. SEE STANDARD SPECIFICATIONS FOR REQUIRED EMBEDMENT.
2. CTB = CEMENT TREATED BASE (CONTAINS AGGREGATE)
CTS = CEMENT TREATED SAND
BOTH MATERIALS SHALL BE MECHANICALLY TAMPED.

GLENN ENGINEERING
T.B.P.E. FIRM # F-303
PHONE 972-717-5151
FAX 972-717-2176
100 DECKER COURT SUITE 910
IRVING, TEXAS 75062

TRINITY CHRISTIAN ACADEMY
DRAINAGE & DRIVE
IMPROVEMENTS NEAR
THE UPPER SCHOOL

STORM SEWER
DETAILS



Issue Dates:
Review: June 23, 2010
Comments: June 30, 2010
Comments: July 2, 2010
Comments: July 8, 2010

Construction:
Scale: AS NOTED
Drawn By: TJC
Checked By: CMA
Project No.: 10 - 599.150

Sheet 11
of 15

BENCHMARK:
TOWN OF ADDISON BENCHMARK 6, BRASS DISC SETON TOP OF EXISTING INLET, LOCATED ON THE EAST SIDE OF ADDISON ROAD, DIRECTLY EAST OF THE LOWER SCHOOL PLAYGROUNDS.
ELEV. = 639.88'

CAUTION!!!
CONTACT:
DIG TESS 1-800-344-8377
ATMDS 1-800-344-8377
AT&T 1-800-344-8377
SOUTHWESTERN BELL 1-800-344-8377
TOWN OF ADDISON 972-450-2871
AT LEAST 48 HOURS PRIOR TO CONSTRUCTION