

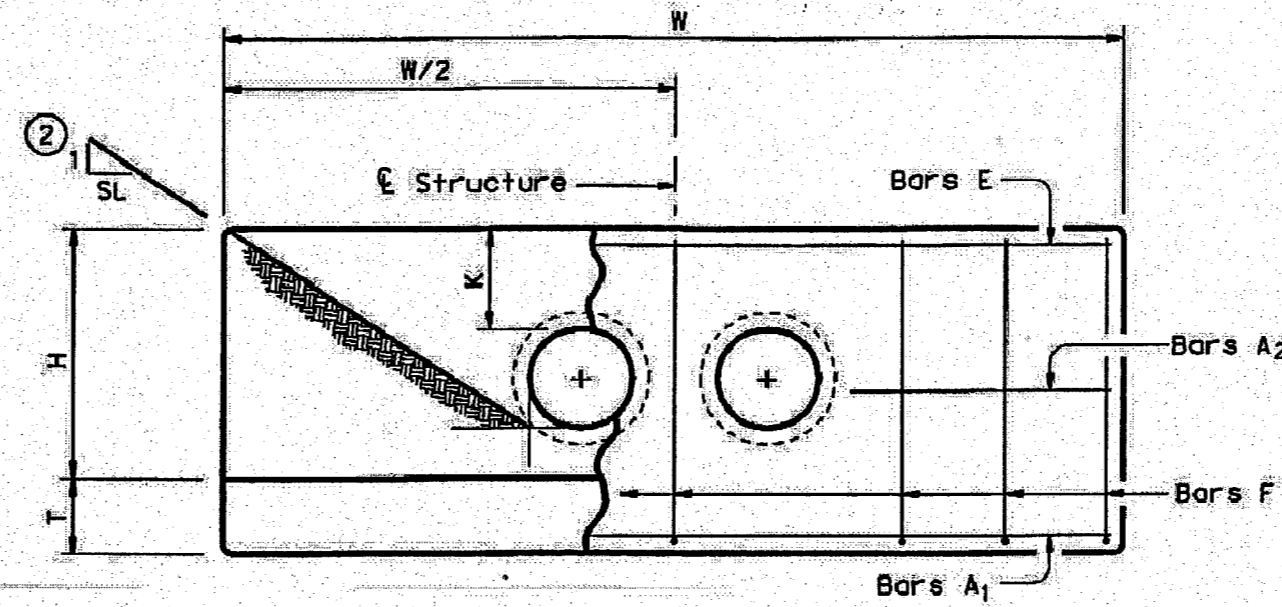
USE 8'-0"

TABLE OF VARIABLE DIMENSIONS AND QUANTITIES FOR ONE HEADWALL

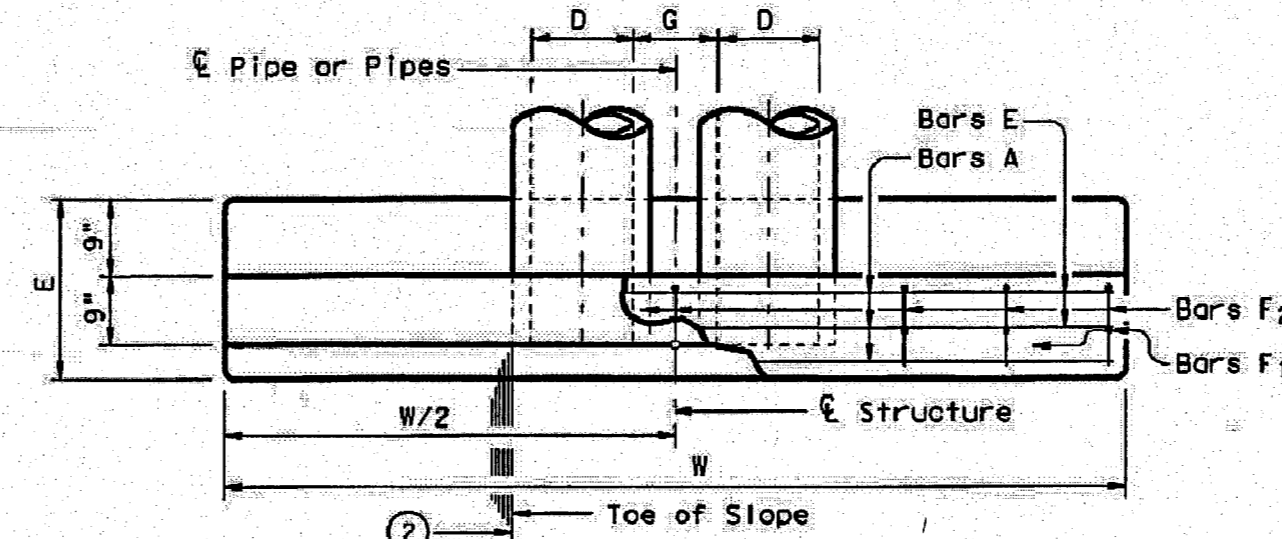
SLOPE DIA. OF PIPE, D	Values for one Pipe		Values to be added for each odd 1 Pipe	
	W	Reinf (Lbs)	W	Reinf (Lbs)
12"	9'-0"	122	1'-9"	15
15"	10'-3"	136	2'-2"	16
18"	11'-6"	163	2'-8"	19
21"	12'-9"	200	3'-1"	31
24"	14'-0"	217	3'-7"	34
27"	15'-3"	254	3'-11"	37
30"	16'-6"	272	4'-4"	40
33"	17'-9"	314	4'-8"	43
36"	19'-0"	371	5'-1"	46
42"	21'-6"	442	5'-10"	52
48"	25'-0"	569	6'-7"	59
54"	27'-6"	701	7'-6"	82
60"	30'-0"	794	8'-3"	90
66"	32'-6"	894	8'-9"	96
72"	35'-0"	1055	9'-4"	103
12"	13'-0"	175	1'-9"	14
15"	14'-9"	193	2'-2"	17
18"	16'-5"	228	2'-8"	19
21"	18'-3"	299	3'-1"	31
24"	20'-0"	323	3'-7"	33
27"	21'-9"	371	3'-11"	37
30"	23'-6"	415	4'-4"	40
33"	25'-3"	469	4'-8"	43
36"	27'-0"	556	5'-1"	46
42"	30'-6"	675	5'-10"	52
48"	35'-6"	837	6'-7"	59
54"	39'-0"	1015	7'-6"	84
60"	42'-6"	1171	8'-3"	91
66"	46'-0"	1298	8'-9"	98
72"	49'-6"	1561	9'-4"	103
12"	17'-0"	229	2'-0"	15
15"	19'-3"	266	2'-4"	17
18"	21'-6"	308	2'-8"	19
21"	23'-9"	362	3'-1"	31
24"	26'-0"	430	3'-7"	34
27"	28'-3"	486	3'-11"	37
30"	30'-6"	539	4'-4"	40
33"	32'-9"	603	4'-8"	42
36"	35'-0"	738	5'-1"	47
42"	39'-6"	881	5'-10"	52
48"	46'-0"	1102	6'-7"	61
54"	50'-6"	1364	7'-6"	84
60"	55'-0"	1547	8'-3"	91
66"	59'-6"	1741	8'-9"	98
72"	64'-0"	2069	9'-4"	102
12"	25'-0"	336	3'-0"	14
15"	28'-3"	384	3'-6"	17
18"	31'-6"	452	4'-2"	19
21"	34'-9"	581	5'-1"	31
24"	38'-0"	644	5'-8"	34
27"	41'-3"	737	6'-5"	37
30"	44'-6"	807	7'-2"	39
33"	47'-9"	912	7'-9"	44
36"	51'-0"	1108	8'-6"	48
42"	57'-6"	1318	9'-6"	54
48"	63'-0"	1674	10'-6"	59
54"	73'-6"	2064	12'-6"	83
60"	80'-0"	2343	14'-6"	89
66"	86'-6"	2635	16'-6"	96
72"	93'-0"	3123	18'-6"	101

DISCLAIMER: This standard is governed by the Texas Engineering Practice Act. No warranty of any kind is made by TxDOT for any purpose whatsoever. TxDOT assumes no responsibility for incorrect results or damages resulting from its use.

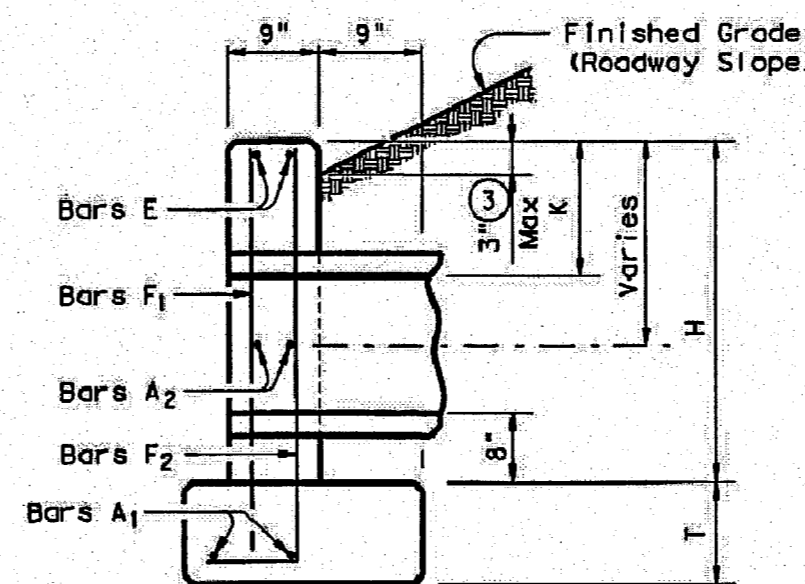
LEVELS DISPLAYED



ELEVATION



PLAN OF NON-SKEWED PIPES



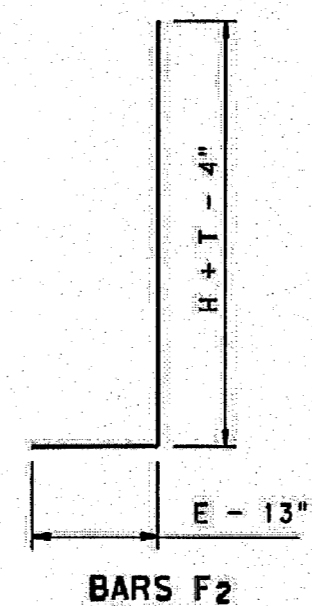
SECTION

TABLE OF CONSTANT DIMENSIONS

DIA. OF PIPE, D	G	K	H	T	E
12"	9"	1'-0"	2'-8"	9"	1'-9"
15"	11"	1'-0"	2'-11"	9"	1'-9"
18"	1'-2"	1'-0"	3'-2"	9"	1'-9"
21"	1'-4"	1'-0"	3'-5"	9"	2'-0"
24"	1'-7"	1'-0"	3'-8"	9"	2'-0"
27"	1'-8"	1'-0"	3'-11"	9"	2'-3"
30"	1'-10"	1'-0"	4'-2"	9"	2'-3"
33"	1'-11"	1'-0"	4'-5"	9"	2'-6"
36"	2'-1"	1'-0"	4'-8"	1'-0"	2'-6"
42"	2'-4"	1'-0"	5'-2"	1'-0"	2'-9"
48"	2'-7"	1'-3"	5'-11"	1'-0"	3'-2"
54"	3'-0"	1'-3"	6'-5"	1'-0"	3'-6"
60"	3'-3"	1'-3"	6'-11"	1'-0"	3'-9"
66"	3'-3"	1'-3"	7'-5"	1'-0"	3'-9"
72"	3'-4"	1'-3"	7'-11"	1'-0"	4'-0"

TABLE OF REINFORCING STEEL

Bar	Size	Spa	No.
A1	#5	-	2
A2	#5	1'-6"	-
E	#5	-	2
F	#5	1'-0"	-



BARS F2

GENERAL NOTES:
 Designed according to AASHTO LRFD Specifications.
 Reinforcing steel shall be placed with the center of the outside layer of bars 2" from the surface of the concrete.
 All reinforcing steel shall be Grade 60. All concrete shall be Class "C" and shall have a minimum compressive strength of 3600 psi.
 No bridge rails of any type may be mounted directly to these culvert headwalls.

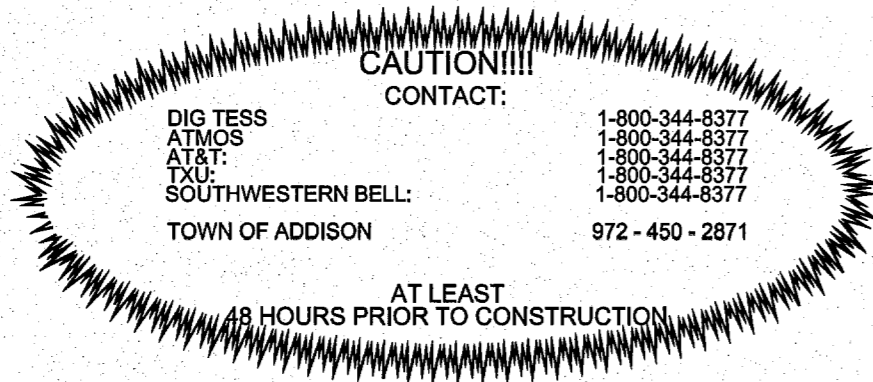
Texas Department of Transportation
 Bridge Division

CONCRETE HEADWALLS WITH PARALLEL WINGS FOR NON-SKEWED PIPE CULVERTS

CH-PW-0

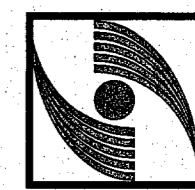
FILE: chpw0ste.dgn	DR: TxDOT	CR: TxDOT	DN: TxDOT	CA: CAF
©TxDOT February 2010	REVISIONS	FEDERAL AID PROJECT	SHEET	
COUNTY		CONTROL SECT	JOB	ROADWAY

- Quantities shown are for concrete pipe and will increase slightly for metal pipe installations.
- Indicated slope is perpendicular to centerline Pipe or Pipes.
- For vehicle safety, curbs shall project no more than 3" above finished grade. Curb heights shall be reduced, if necessary, to meet these requirements. No changes will be made in quantities and no additional compensation will be allowed for this work.
- Quantities shown are for one structure end only (one headwall).



BENCHMARK:
 TOWN OF ADDISON BENCHMARK 6, BRASS DISC SETON TOP OF EXISTING INLET, LOCATED ON THE EAST SIDE OF ADDISON ROAD, DIRECTLY EAST OF THE LOWER SCHOOL PLAYGROUNDS.
 ELEV. = 639.88'

GLENN ENGINEERING



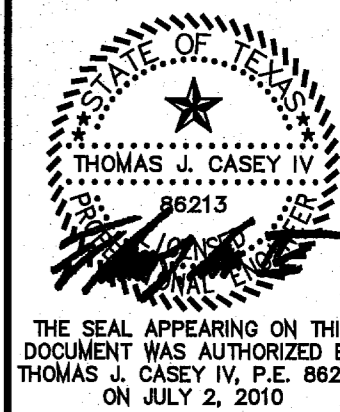
PHONE 972-717-5151
 FAX 972-717-2176
 IRVING, TEXAS 75062

T.B.P.E. FIRM # F-303
 109 DECKER COURT-SUITE 910

TRINITY CHRISTIAN ACADEMY

DRAINAGE & DRIVE IMPROVEMENTS NEAR THE UPPER SCHOOL

TxDOT TYPE "A" HEADWALL DETAILS



Issue Dates:
 Review: June 23, 2010
 Comments: June 30, 2010
 Comments: July 2, 2010

Construction:
 Scale: AS NOTED
 Drawn By: TJC
 Checked By: CMA
 Project No.: 10 - 599.150

Sheet 15A
 of 15