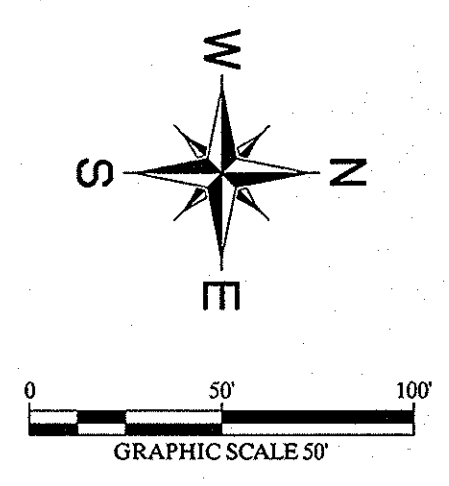


**METHODIST HOSPITAL
 FOR SURGERY
 ADDISON, TEXAS
 FILE NUMBER: 311T-7863**

DRAINAGE AREA MAP



LEGEND

- DRAINAGE AREA NUMBER
- DRAINAGE AREA (ACRES)
- Q100 FLOW (CFS)
- DRAINAGE AREA
- PROPOSED CONTOUR
- EXISTING CONTOUR
- FLOW ARROW

DRAINAGE AREA CALCULATIONS

DA	Area (Acres)	C	Tc (min)	1100 (in/hr)	Q100 (cfs)
DA-1	1.98	0.30	10	8.74	5.2
DA-2	0.48	0.90	10	8.74	3.8
DA-3	0.24	0.90	10	8.74	1.9
DA-4	0.21	0.90	10	8.74	1.7
DA-5a	0.38	0.90	10	8.74	3.0
DA-5b	0.35	0.90	10	8.74	2.8
DA-5c	0.03	0.90	10	8.74	0.2
DA-5d	0.03	0.90	10	8.74	0.2
DA-5e	0.33	0.90	10	8.74	2.6
DA-6	0.46	0.90	10	8.74	3.6
DA-7	1.17	0.90	10	8.74	9.2
DA-8	0.57	0.90	10	8.74	4.5
DA-9	0.01	0.90	10	8.74	0.1
DA-10	0.08	0.90	10	8.74	0.6
OS-1	0.74	0.9	10	8.74	5.8
OS-2	0.30	0.90	10	8.74	2.4
OS-3	0.12	0.90	10	8.74	0.9
OS-4	0.21	0.90	10	8.74	1.7

- NOTES:**
- DRAINAGE AREA OS-1 WILL BE PICKED UP BY AN INLET IN ADDISON ROAD.
 - DA-1 WILL BE DETAINED TO EXISTING CONDITIONS IN THE FUTURE.

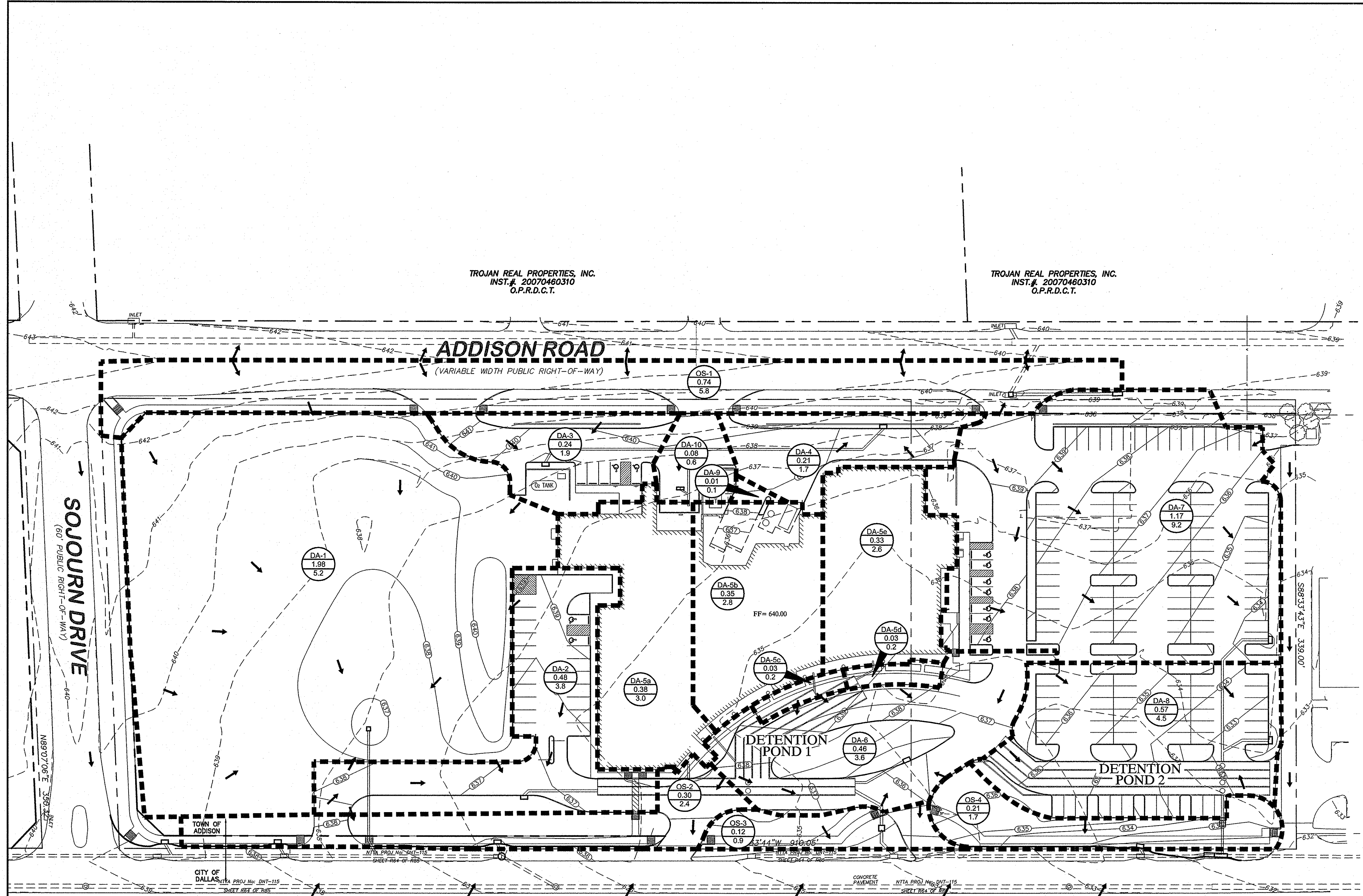
**RECORD DRAWINGS
 (SEPTEMBER 2010)**
 INFORMATION PROVIDED BY:
 Rogers-O'Brien Construction Company

**STOP!
 CALL BEFORE YOU DIG**
DIG TESS
 1-800-DIG-TESS
 (@ least 72 hours prior to digging)

BENCHMARK

- "1" FOUND ON TOP OF THE CONCRETE BASE OF A LIGHT POLE IN THE CENTER MEDIAN OF EXCEL PARKWAY APPROXIMATELY 50 FEET WEST OF THE CENTERLINE OF ADDISON ROAD. (PER TOWN OF ADDISON PLAN # 96103, SHEET 2, DATED JANUARY 1998) ELEV=644.41
- BM #60" SET ON TOP OF A CONCRETE CURB INLET LOCATED ON THE WEST SIDE OF DALLAS PARKWAY APPROXIMATELY 826 FEET NORTH OF THE CENTERLINE OF SOJOURN DRIVE. ELEV=632.78
- BM #61" SET ON TOP OF A CONCRETE CURB INLET LOCATED ON THE WEST SIDE OF DALLAS PARKWAY APPROXIMATELY 160 FEET NORTH OF THE CENTERLINE OF SOJOURN DRIVE. ELEV=638.04

THE CONTRACTOR SHALL FIELD VERIFY THE HORIZONTAL AND VERTICAL LOCATIONS OF ALL EXISTING UTILITIES PRIOR TO START OF CONSTRUCTION AND SHALL NOTIFY THE CONSTRUCTION MANAGER AND ENGINEER OF ANY CONFLICTS DISCOVERED. CONTRACTOR IS RESPONSIBLE FOR PROTECTING EXISTING UTILITIES (SHOWN OR NOT SHOWN) WITHIN SCOPE OF CONSTRUCTION. IF ANY EXISTING UTILITIES ARE DAMAGED, THE CONTRACTOR SHALL REPLACE THEM AT HIS OWN EXPENSE. CALL 1-800-DIG-TESS AT LEAST 72 HOURS PRIOR TO COMMENCING CONSTRUCTION IN VICINITY.



DALLAS NORTH TOLLWAY
 (VARIABLE WIDTH PUBLIC RIGHT-OF-WAY)

IMAGES: XREF: 04/24/10 XREF: 04/24/10 XREF: 04/24/10 XREF: 04/24/10 XREF: 04/24/10 XREF: 04/24/10 XREF: 04/24/10 XREF: 04/24/10 XREF: 04/24/10 XREF: 04/24/10
 PLOTTED BY: KIPRI, CIVIL/03/2010 - METHODIST ADDISON/WORKPLAN/SETC-DMAF.DWG
 DATE: 11/20/09 2:54:54

Scale: AS SHOWN
 Designed by: TNB
 Drawn by: TNB
 Checked by: DKK
 Date: 11/20/09
 Project No. 6902500

SHEET
C-06