

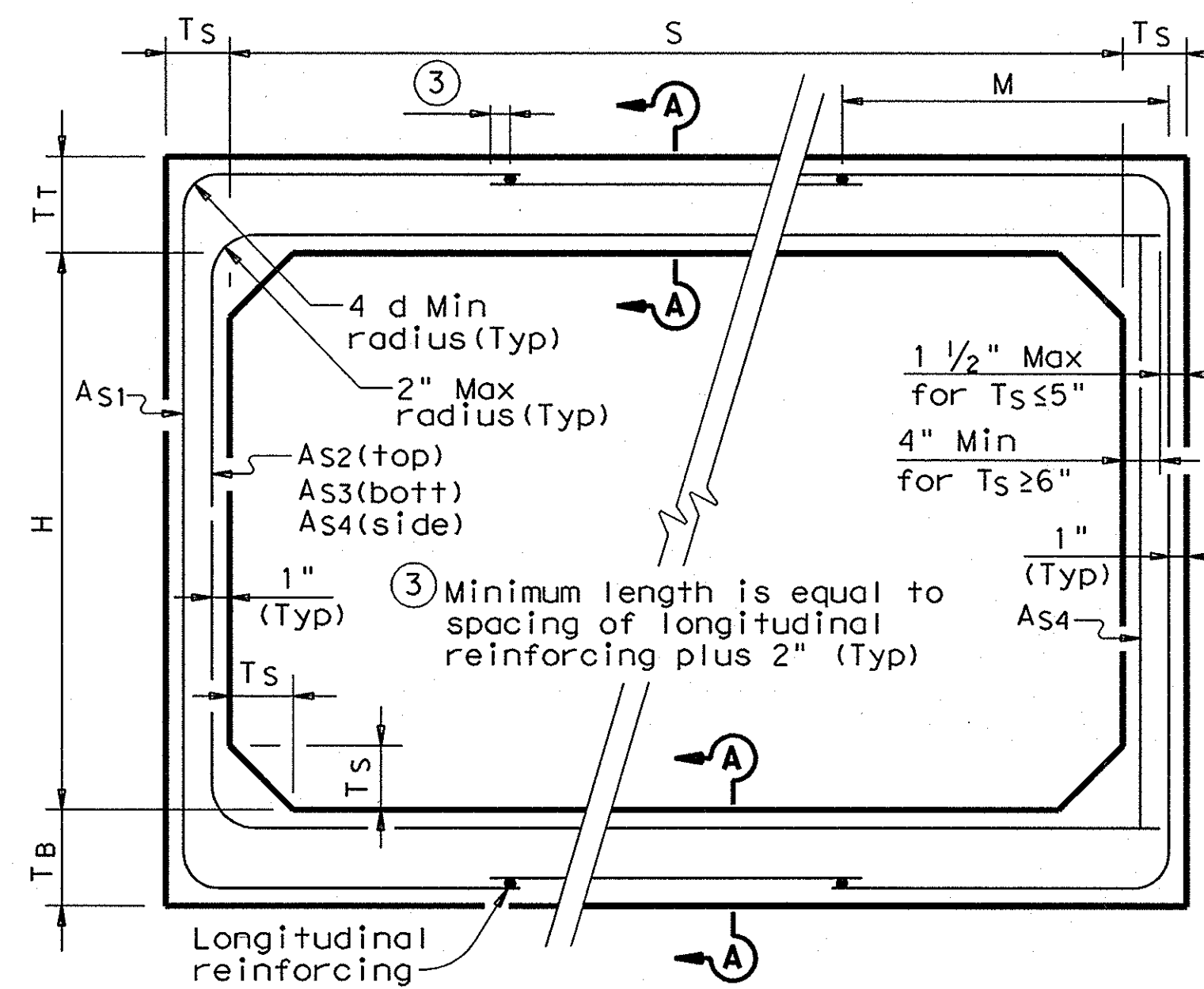
DISCLAIMER: The use of this standard is governed by the "Texas Engineering Practice Act". No warranty of any kind is made by TxDOT for any purpose whatsoever. TxDOT assumes no responsibility for the conversion of this standard to other formats or for incorrect results or damages resulting from its use.

ACC: LEVELS DISPLAYED

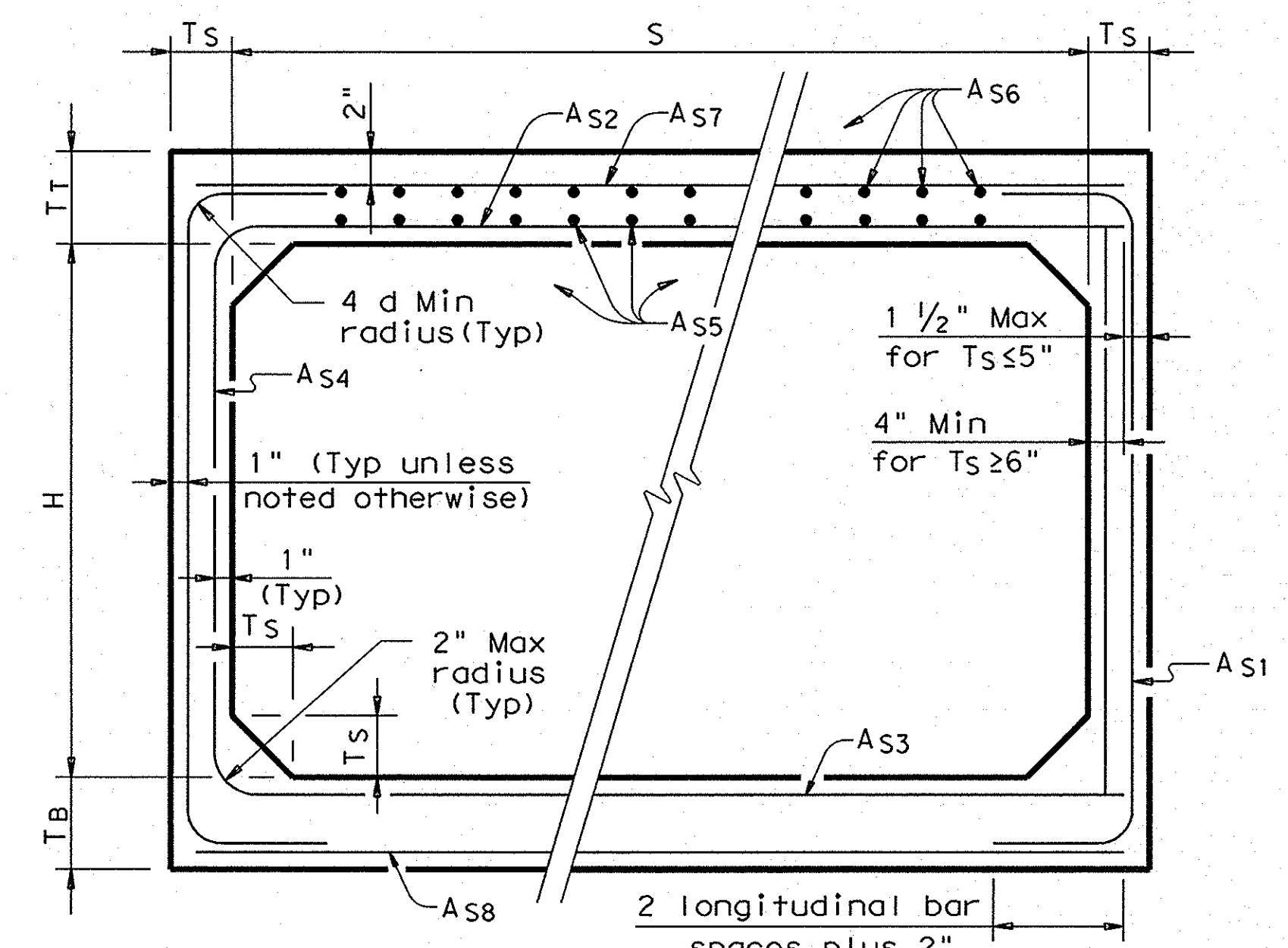
**BOX DATA**

SECTION DIMENSIONS					Fill Height (ft)	M (Min) (in)	REINFORCING (in <sup>2</sup> /ft) ②								Lift Weight (Tons) ①
S (ft)	H (ft)	T <sub>T</sub> (in)	T <sub>B</sub> (in)	T <sub>S</sub> (in)			A <sub>S1</sub>	A <sub>S2</sub>	A <sub>S3</sub>	A <sub>S4</sub>	A <sub>S5</sub>	A <sub>S6</sub>	A <sub>S7</sub>	A <sub>S8</sub>	
4	2	7.5	6	5	<2	-	0.18	0.40	0.20	0.12	0.20	0.18	0.18	0.14	4.5
4	2	5	5	5	2<3	38	0.21	0.23	0.20	0.12	-	-	-	-	3.6
4	2	5	5	5	3-5	38	0.12	0.12	0.12	0.12	-	-	-	-	3.6
4	2	5	5	5	10	38	0.12	0.12	0.13	0.12	-	-	-	-	3.6
4	2	5	5	5	15	38	0.14	0.17	0.18	0.12	-	-	-	-	3.6
4	2	5	5	5	20	38	0.19	0.23	0.23	0.12	-	-	-	-	3.6
4	2	5	5	5	25	38	0.23	0.28	0.28	0.12	-	-	-	-	3.6
4	2	5	5	5	30	38	0.28	0.33	0.33	0.12	-	-	-	-	3.6
4	2	5	5	5	35	38	0.33	0.38	0.39	0.12	-	-	-	-	3.6
4	3	7.5	6	5	<2	-	0.18	0.45	0.23	0.12	0.22	0.18	0.18	0.14	5.0
4	3	5	5	5	2<3	38	0.16	0.28	0.25	0.12	-	-	-	-	4.1
4	3	5	5	5	3-5	38	0.12	0.12	0.13	0.12	-	-	-	-	4.1
4	3	5	5	5	10	38	0.12	0.14	0.15	0.12	-	-	-	-	4.1
4	3	5	5	5	15	38	0.12	0.20	0.20	0.12	-	-	-	-	4.1
4	3	5	5	5	20	38	0.14	0.26	0.26	0.12	-	-	-	-	4.1
4	3	5	5	5	25	38	0.17	0.32	0.32	0.12	-	-	-	-	4.1
4	3	5	5	5	30	38	0.21	0.38	0.38	0.12	-	-	-	-	4.1
4	3	5	5	5	35	38	0.25	0.44	0.44	0.12	-	-	-	-	4.1
4	4	7.5	6	5	<2	-	0.18	0.47	0.25	0.12	0.23	0.18	0.18	0.14	5.5
4	4	5	5	5	2<3	38	0.13	0.31	0.28	0.12	-	-	-	-	4.6
4	4	5	5	5	3-5	38	0.12	0.14	0.15	0.12	-	-	-	-	4.6
4	4	5	5	5	10	38	0.12	0.15	0.16	0.12	-	-	-	-	4.6
4	4	5	5	5	15	38	0.12	0.21	0.22	0.12	-	-	-	-	4.6
4	4	5	5	5	20	38	0.12	0.27	0.28	0.12	-	-	-	-	4.6
4	4	5	5	5	25	38	0.14	0.33	0.34	0.12	-	-	-	-	4.6
4	4	5	5	5	30	38	0.17	0.39	0.40	0.12	-	-	-	-	4.6
4	4	5	5	5	35	38	0.20	0.45	0.46	0.12	-	-	-	-	4.6

- ① For Box Length = '8'-0"
- ② A<sub>S1</sub> thru A<sub>S4</sub>, A<sub>S7</sub> and A<sub>S8</sub> are minimum required areas of reinforcement per linear foot of box length. A<sub>S6</sub> and A<sub>S5</sub> are minimum required areas of reinforcement per linear foot of box width.



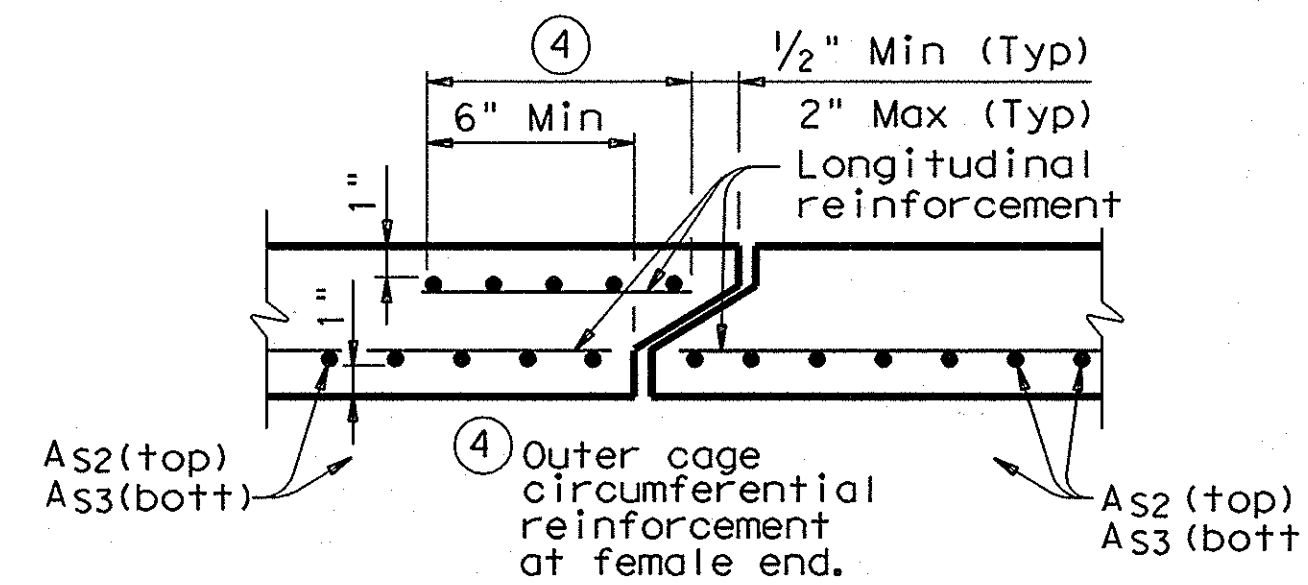
**CORNER OPTION "A"**



**CORNER OPTION "B"**

**FILL HEIGHT 2 FT AND GREATER**

**FILL HEIGHT LESS THAN 2 FT**



**SECTION A-A**

(TOP AND BOTTOM SLAB JOINT REINFORCEMENT)

**GENERAL NOTES:**

Designs shown conform to ASTM C1433. Refer to ASTM C1433 for information or details not shown. All concrete shall be Class "H" Concrete with a minimum compressive strength of 5,000 psi. See SCP-MD standard sheet for miscellaneous details and notes not shown. In lieu of furnishing the designs shown on this sheet, the contractor may furnish an alternate design that is equal to or exceeds the box design for the design fill height in the table. Shop plans for alternate designs shall be submitted in accordance with Item "Precast Concrete Structures".

**RECORD DRAWINGS (SEPTEMBER 2010)**

INFORMATION PROVIDED BY:  
Rogers-O'Brien Construction Company

HS20 LOADING

Texas Department of Transportation  
Bridge Division

**SINGLE BOX CULVERTS PRECAST**  
4'-0" SPAN

**SCP-4**

FILE: scp04ste.dgn	DN: GAF	CK: LMW	DW: BWH/TxDOT	CK: GAF
© TxDOT May 2005	DISTRICT	FEDERAL AID PROJECT		SHEET
REVISIONS				
06-06 - Revised reinforcing.	COUNTY	CONTROL	SECT	JOB
08-07 - General notes.				HIGHWAY