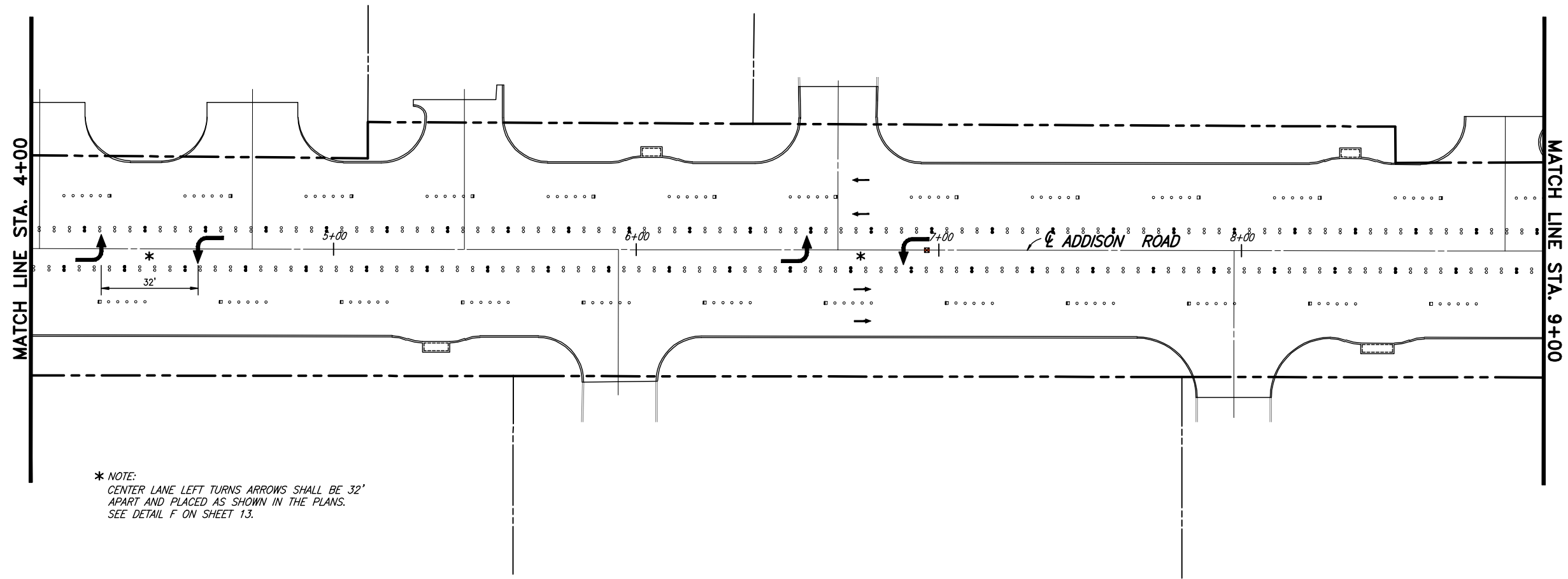


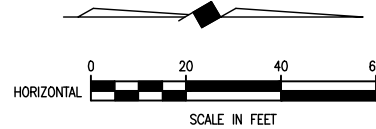
REVIS: 5/6/10 - ROWE
H:\Projects\Addison\2002 102\PHASE1\Sheet\As-Built\2002 102C14_Marking.dwg
PLOT SCALE: 1:1.0101
PLOT STYLE: 11x17.ctb
PLOTTED BY: ROWE ON 5/14/2010



* NOTE:
CENTER LANE LEFT TURNS ARROWS SHALL BE 32'
APART AND PLACED AS SHOWN IN THE PLANS.
SEE DETAIL F ON SHEET 13.

This record drawing is a compilation of the sealed engineering drawing for this project; modified by addenda, change orders and information furnished by the contractor. The information shown on the record drawings that was provided by the contractor or others not associated with the design engineer cannot be verified for accuracy or completeness. This original sealed drawings are on file at the offices of Birkhoff, Hendricks & Carter, L.L.P.
BY J.W.B. DATE 05/04/2010

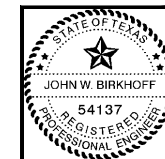
These plans and related specifications were prepared for construction of this specific project only. Reuse of these documents is not permitted without written authorization of Birkhoff, Hendricks, & Conway, L.L.P.



THESE DOCUMENTS ARE FOR BIDDING, CONSTRUCTION, AND PERMIT PURPOSES.

John W. Birkhoff

DATE: 10/31/06



TOWN OF ADDISON, TEXAS	
ADDISON ROAD IMPROVEMENTS BELT LINE ROAD TO ARAPAHO ROAD PHASE I PAVEMENT MARKING LAYOUT SHEET	
BIRKHOFF, HENDRICKS & CONWAY L. L. P. CONSULTING ENGINEERS Dallas, Texas	
DESIGNED BY: <u>J.W.B.</u>	PROJECT: <u>2002 102</u>
DRAWN BY: <u>R.J.L.</u>	DATE: <u>SEPTEMBER 2006</u>
SHEET NO. <u>14</u> OF <u>68</u> SHEETS	