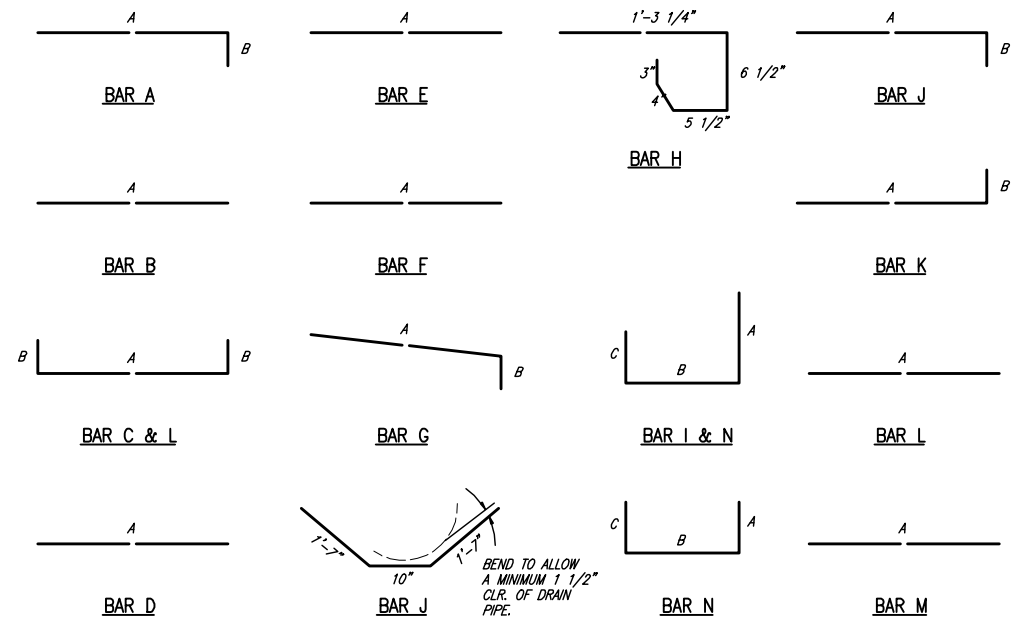


PLOTTED BY: RLOWE ON 5/14/2010
 PLOT STYLE: 11x17.ctb
 REVISION: 5/16/10 - RLOWE
 H:\Projects\Addison\2002\02\PHASE1\Sheet-As-Built\2002\02c26 - Detail.dwg
 11x17.ctb



BAR DIAGRAMS

DOUBLE INLETS
DIMENSIONS SHOWN ARE FOR MAXIMUM SIZE INLETS

INLET LENGTH	BAR TYPE	BAR DIA. (1/8 IN.)	NO. REQ'D	BAR DIMENSIONS		
				A	B	C
6 FT.	A	3	15	3'-2"	0'-6"	-
	B	3	2	11'-6"	-	-
	C	4	16	13'-4"	0'-6"	-
	D	4	9	4'-8"	-	-
	E	5	6	13'-4"	-	-
	F	4	5	1'-2"	-	-
	G	3	12	2'-0"	1'-3"	-
	H	3	26	*	*	*
	I	4	12	4'-8"	3'-2"	3'-2"
	J	5	1	*	*	*
	K	5	6	3'-2"	0'-6"	-
	L	4	11	3'-2"	0'-6"	-
	M	4	2	3'-0"	**	-
	N	4	2	4'-8"	3'-2"	4'-8"
7 FT.	A	3	17	3'-2"	0'-6"	-
	B	3	2	13'-6"	-	-
	C	4	16	15'-4"	0'-3"	-
	D	4	9	4'-8"	-	-
	E	5	6	15'-4"	-	-
	F	4	5	1'-2"	-	-
	G	3	15	2'-0"	1'-3"	-
	H	3	32	*	*	*
	I	4	14	4'-8"	3'-2"	3'-2"
	J	5	1	*	*	*
	K	5	6	3'-2"	0'-6"	-
	L	4	11	3'-2"	0'-6"	-
	M	4	2	3'-0"	**	-
	N	4	2	4'-8"	3'-2"	4'-8"

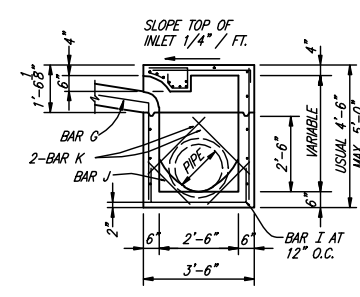
* SEE DIAGRAM FOR DIMENSIONS.
 ** FIELD CUT AS REQUIRED TO ACCOMMODATE DRAIN PIPE 12" AND 14" INLETS

REINFORCING STEEL SCHEDULE

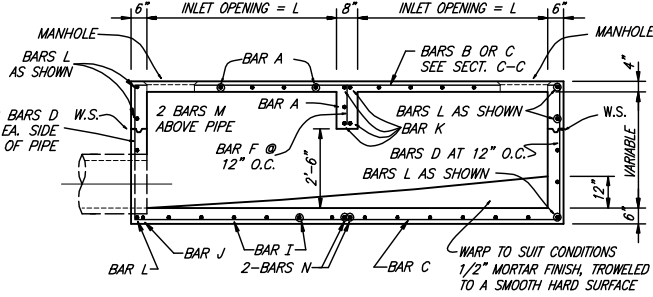
DOUBLE INLETS
DIMENSIONS SHOWN ARE FOR MAXIMUM SIZE INLETS

INLET LENGTH	BAR TYPE	BAR DIA. (1/8 IN.)	NO. REQ'D	BAR DIMENSIONS		
				A	B	C
8 FT.	A	3	19	3'-2"	0'-6"	-
	B	3	2	15'-6"	-	-
	C	4	16	17'-4"	0'-6"	-
	D	4	9	4'-8"	-	-
	E	5	6	17'-4"	-	-
	F	4	5	1'-2"	-	-
	G	3	12	2'-0"	1'-3"	-
	H	3	26	*	*	*
	I	4	16	4'-8"	3'-2"	3'-2"
	J	5	1	*	*	*
	K	5	6	3'-2"	0'-6"	-
	L	4	11	3'-2"	0'-6"	-
	M	4	2	3'-0"	**	-
	N	4	2	4'-8"	3'-2"	4'-8"
10 FT.	A	3	23	3'-2"	0'-6"	-
	B	3	2	19'-6"	-	-
	C	4	16	21'-4"	0'-6"	-
	D	4	9	4'-8"	-	-
	E	5	6	21'-4"	-	-
	F	4	5	1'-2"	-	-
	G	3	15	2'-0"	1'-3"	-
	H	3	32	*	*	*
	I	4	20	4'-8"	3'-2"	3'-2"
	J	5	1	*	*	*
	K	5	6	3'-2"	0'-6"	-
	L	4	11	3'-2"	0'-6"	-
	M	4	2	3'-0"	**	-
	N	4	2	4'-8"	3'-2"	4'-8"

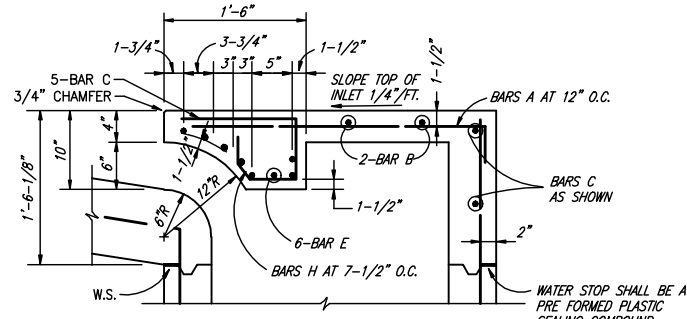
* SEE DIAGRAM FOR DIMENSIONS.
 ** FIELD CUT AS REQUIRED TO ACCOMMODATE DRAIN PIPE 16" AND 20" INLETS



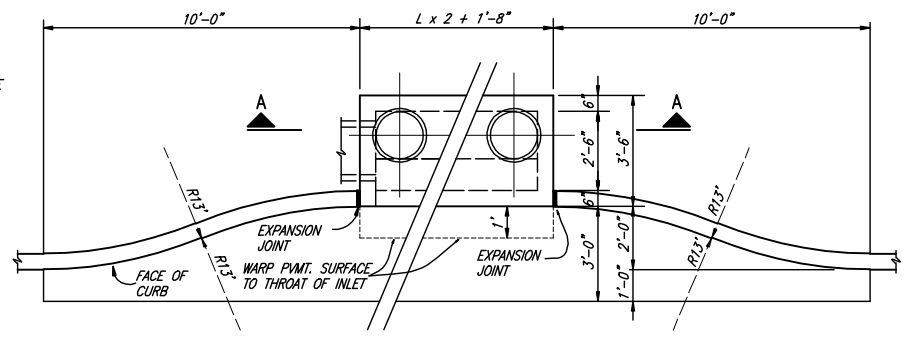
SECTION B-B



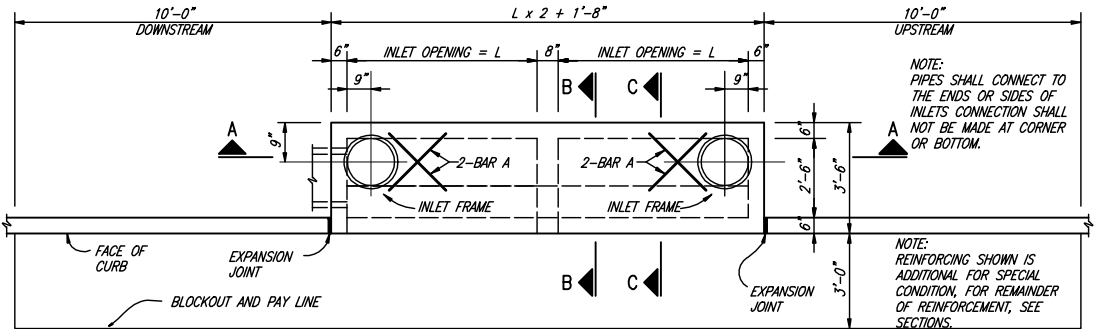
SECTION A-A



SECTION C-C

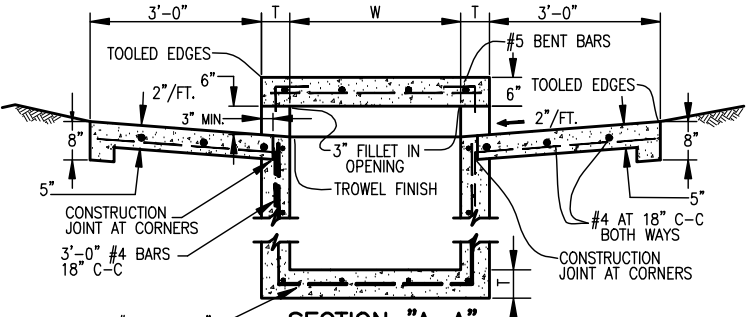


PLAN - RECESSED INLET

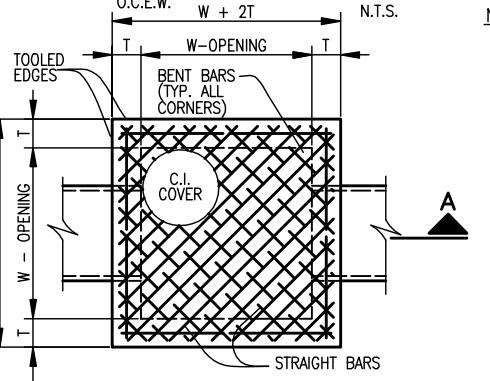


PLAN - STANDARD INLET

12, 14, 16 AND 20 FOOT INLETS



SECTION A-A



PLAN OF TOP SLAB

NOTES

- MATERIAL AND WORKMANSHIP SHALL CONFORM WITH THE REQUIREMENTS OF NCTCOG STANDARD SPECIFICATIONS FOR STANDARD CONCRETE MANHOLES, MINIMUM CLASS "A" CONCRETE.
- LAYERS OF REINFORCING STEEL NEAREST THE INTERIOR AND EXTERIOR SURFACES SHALL HAVE A COVER OF 2" TO THE CENTER BARS, UNLESS OTHERWISE NOTED.
- DEPTH OF DROP INLET FROM FINISHED GRADE TO FLOW LINE OF INLET IS VARIABLE. APPROXIMATE DEPTH WILL BE SHOWN ON PLANS AT LOCATION OF INLET.
- ALL STANDARD DROP INLETS SHALL HAVE ONE OPENING ON EACH SIDE UNLESS OTHERWISE SHOWN ON PLANS.
- CASE IRON COVER SHALL INCLUDE TOWN OF ADDISON LOGO IN CENTER OF COVER.

INLET SIZE	T	W
2' SQUARE	7"	2'-0"
3' SQUARE	7"	3'-0"
4' SQUARE	7"	4'-0"
5' SQUARE	8"	5'-0"
6' SQUARE	9"	6'-0"

THESE DOCUMENTS ARE FOR BIDDING, CONSTRUCTION, AND PERMIT PURPOSES.

John W. Birkhoff

DATE: 10/31/06

This record drawing is a compilation of the sealed engineering drawing for this project; modified by addenda, change orders and information furnished by the contractor. The information shown on the record drawings that was provided by the contractor or others not associated with the design engineer cannot be verified for accuracy or completeness. This original sealed drawings are on file at the offices of Birkhoff, Hendricks & Carter, L.L.P.

BY J.W.B. DATE 05/04/2010

These plans and related specifications were prepared for construction of this specific project only. Reuse of these documents is not permitted without written authorization of Birkhoff, Hendricks, & Conway, L.L.P.



TOWN OF ADDISON, TEXAS

ADDISON ROAD IMPROVEMENTS
BELT LINE ROAD TO ARAPAHO ROAD PHASE I
DETAILS

BIRKHOFF, HENDRICKS & CONWAY L. L. P.
 CONSULTING ENGINEERS
 Dallas, Texas

DESIGNED BY: J.W.B. PROJECT: 2002 102 SHEET NO. 26
 DRAWN BY: M.W.C. DATE: SEPTEMBER 2006 OF 68 SHEETS