

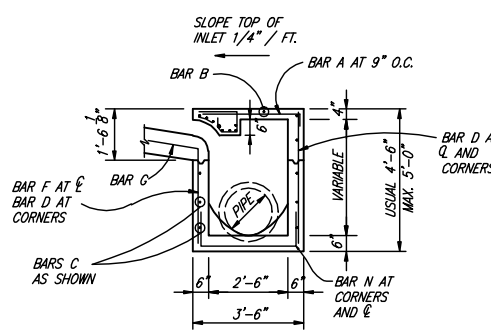
BAR DIAGRAMS

DIMENSIONS SHOWN ARE FOR MAXIMUM SIZE INLETS

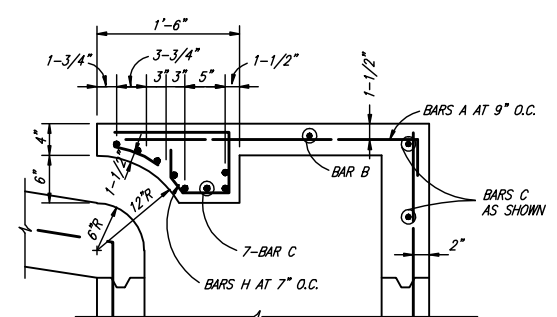
INLET LENGTH	BAR TYPE	BAR DIA. (1/8 IN.)	NO. REQ'D	BAR DIMENSIONS		
				A	B	C
4 FT.	A	3	6	3'-2"	0'-3"	-
	B	3	1	2'-10"	-	-
	C	4	15	4'-8"	0'-6"	-
	D	4	5	4'-8"	-	-
	F	4	1	3'-2"	-	-
	G	3	5	2'-0"	1'-3"	-
6 FT.	H	3	3	*	*	*
	N	3	3	3'-2"	3'-2"	3'-2"
	A	3	9	3'-2"	0'-3"	-
	B	3	1	4'-10"	-	-
	C	4	15	6'-8"	0'-6"	-
	D	4	5	4'-8"	-	-
8 FT.	F	4	1	3'-2"	-	-
	G	3	5	2'-0"	1'-3"	-
	H	3	3	*	*	*
	N	3	3	3'-2"	3'-2"	3'-2"
	A	3	12	3'-2"	0'-3"	-
	B	4	1	6'-10"	-	-
10 FT.	C	4	15	8'-8"	0'-6"	-
	D	4	5	4'-8"	-	-
	F	4	1	3'-2"	-	-
	G	3	5	2'-0"	1'-3"	-
	H	3	4	*	*	*
	N	3	3	3'-2"	3'-2"	3'-2"
10 FT.	A	3	10	3'-2"	0'-3"	-
	B	3	2	8'-10"	-	-
	C	4	16	10'-8"	0'-6"	-
	D	4	4	4'-8"	-	-
	E	5	6	10'-8"	-	-
	G	3	5	2'-0"	1'-3"	-
10 FT.	H	3	15	*	*	*
	I	4	8	4'-8"	3'-2"	3'-2"
10 FT.	L	4	5	4'-3"	-	-

* SEE DIAGRAM FOR DIMENSIONS. 4', 6', 8' AND 10' INLETS

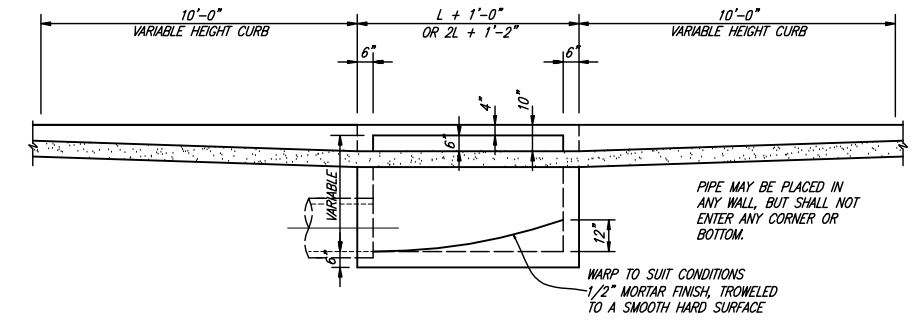
REINFORCING STEEL SCHEDULE



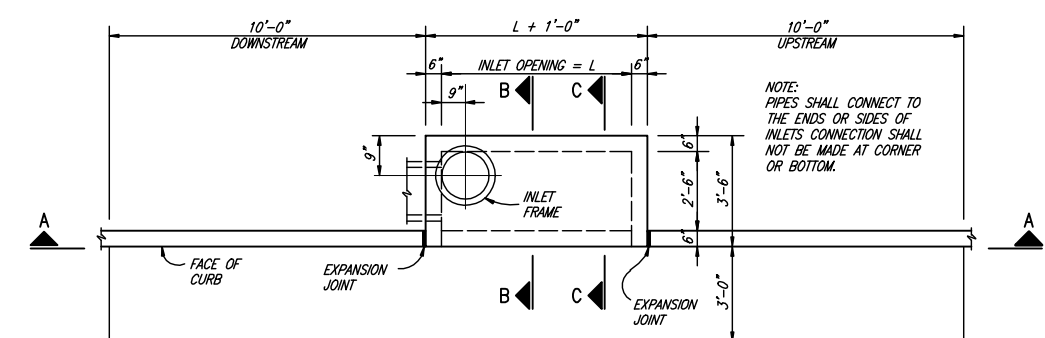
SECTION B-B



SECTION C-C

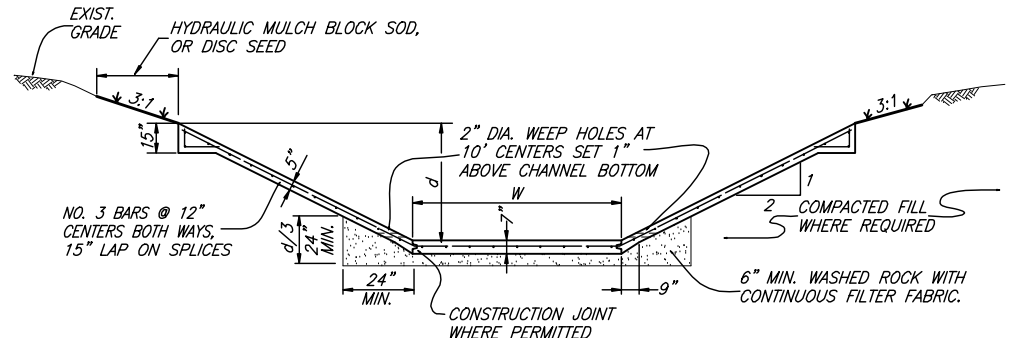


SECTION A-A - STANDARD AND RECESSED INLETS



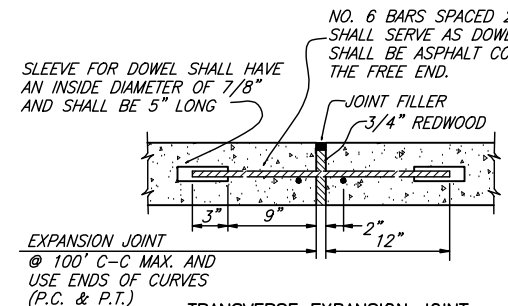
PLAN - STANDARD INLET

4, 6, 8 AND 10 FOOT INLETS



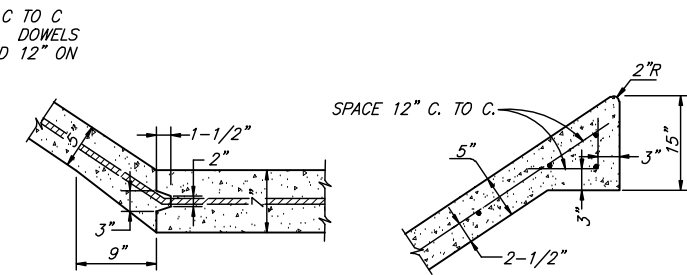
TYPICAL REINFORCED CONCRETE CHANNEL DETAIL

N.T.S.



EXPANSION JOINT @ 100' C-C MAX. AND USE ENDS OF CURVES (P.C. & P.T.)

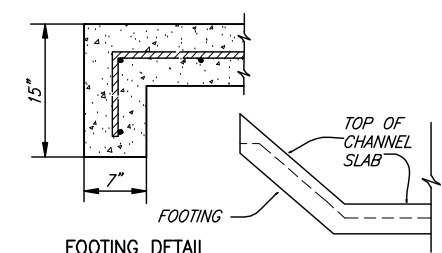
TRANSVERSE EXPANSION JOINT



CONSTRUCTION JOINT

CONCRETE CHANNEL DETAIL

N.T.S.



FOOTING DETAIL

THESE DOCUMENTS ARE FOR BIDDING, CONSTRUCTION, AND PERMIT PURPOSES.

DATE: 10/31/06

DESIGNED BY: J.W.B. PROJECT: 2002 102
DRAWN BY: M.W.C. DATE: SEPTEMBER 2006



- NOTE:
1. WASHED ROCK SHALL BE GAP GRADE 1 1/2".
 2. CONCRETE SHALL BE CLASS "A" (MIN. 3000 P.S.I.).
 3. FILL AREA SHALL BE COMPACTED TO 95% STD. PROCTOR DENSITY AT OPTIMUM MOISTURE CONTENT PRIOR TO CHANNEL EXCAVATION.
 4. WEEP HOLES CORE DRILL OR FORM WEEP HOLES.
 5. CONSTRUCTION JOINT SHOWN FOR CONVENIENCE ONLY. MONOLITHIC CONSTRUCTION MAY BE USED.
 6. ALL VISIBLE SURFACES SHALL BE TROWEL FINISHED.
 7. CONCRETE FOOTING SHALL BE CONSTRUCTED AT THE BEGINNING AND THE END OF CONCRETE CHANNEL.

This record drawing is a compilation of the sealed engineering drawing for this project; modified by addenda, change orders and information furnished by the contractor. The information shown on the record drawings that was provided by the contractor or others not associated with the design engineer cannot be verified for accuracy or completeness. This original sealed drawings are on file at the offices of Birkhoff, Hendricks & Carter, L.L.P.

BY J.W.B. DATE 05/04/2010

These plans and related specifications were prepared for construction of this specific project only. Reuse of these documents is not permitted without written authorization of Birkhoff, Hendricks, & Conway, L.L.P.

TOWN OF ADDISON, TEXAS
ADDISON ROAD IMPROVEMENTS
BELT LINE ROAD TO ARAPAHO ROAD PHASE I
DETAILS
BIRKHOFF, HENDRICKS & CONWAY L. L. P.
 CONSULTING ENGINEERS
 Dallas, Texas

DESIGNED BY: J.W.B. PROJECT: 2002 102 SHEET NO. 27
 DRAWN BY: M.W.C. DATE: SEPTEMBER 2006 OF 68 SHEETS