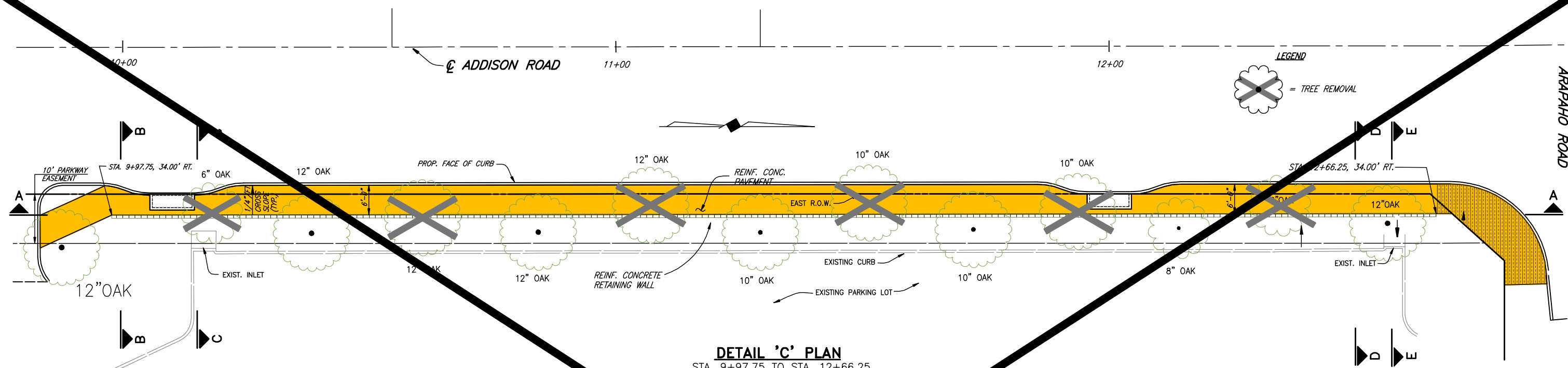
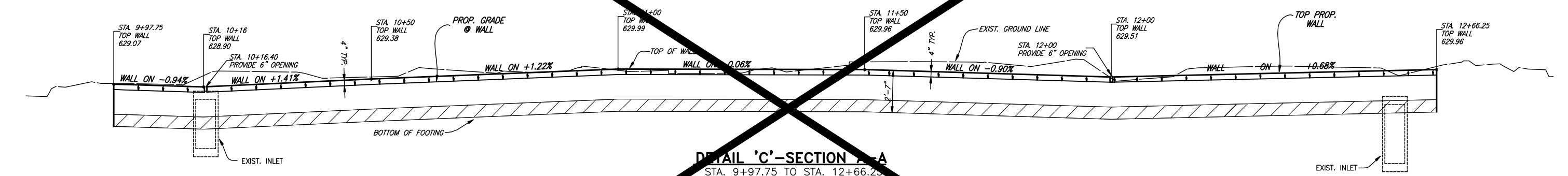


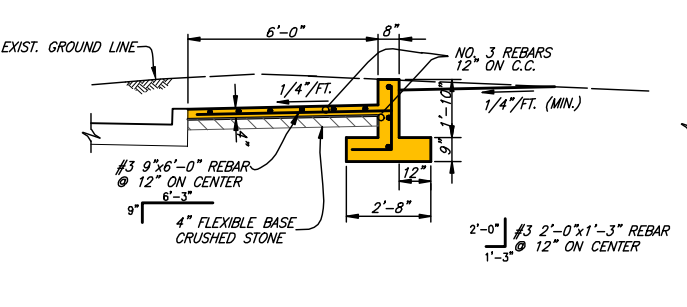
PLotted BY: RLOWE ON 5/14/2010
PLOT SCALE: 1:1.0101
H:\Projects\Addison\2002102\Sheet\Sheet-As-Built\2002102C31_Detail.dwg
REVISED: 5/16/10 - RLOWE



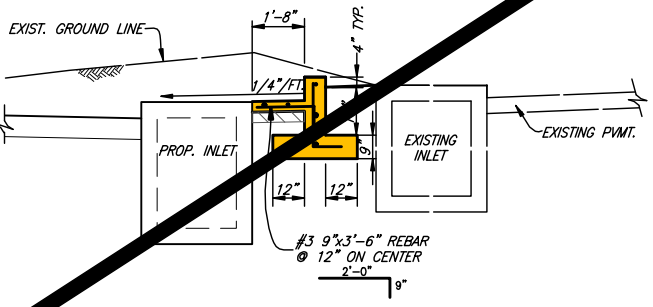
DETAIL 'C' PLAN
STA. 9+97.75 TO STA. 12+66.25
SCALE 1" = 10'



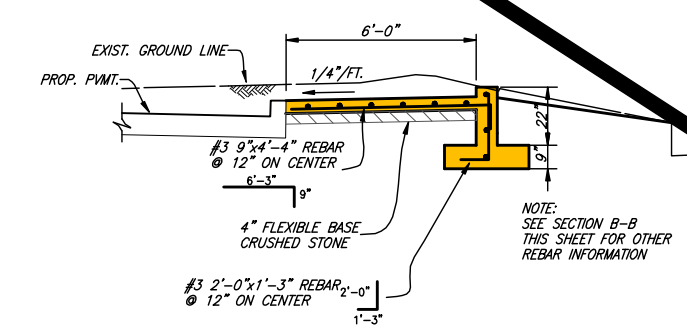
DETAIL 'C'-SECTION A-A
STA. 9+97.75 TO STA. 12+66.25
SCALE 1" = 10' HORIZ. 1" = 3' VERT.



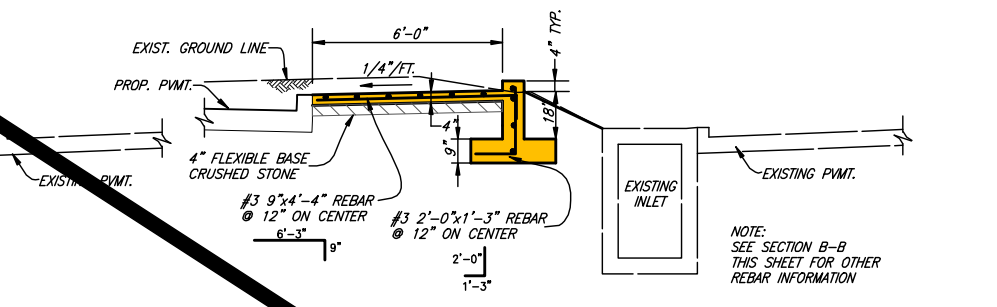
DETAIL 'C'-SECTION B-B
STA. 9+97.75 TO STA. 12+66.25
SCALE 1" = 3'



DETAIL 'C'-SECTION C-C
STA. 9+97.75 TO STA. 12+66.25
SCALE 1" = 3'



DETAIL 'C'-SECTION D-D
STA. 9+97.75 TO STA. 12+66.25
SCALE 1" = 3'



DETAIL 'C'-SECTION E-E
STA. 9+97.75 TO STA. 12+66.25
SCALE 1" = 3'

DELETE THIS SHEET

This record drawing is a compilation of the sealed engineering drawing for this project; modified by addenda, change orders and information furnished by the contractor. The information shown on the record drawings that was provided by the contractor or others not associated with the design engineer cannot be verified for accuracy or completeness. This original sealed drawings are on file at the offices of Birkhoff, Hendricks & Carter, L.L.P.
BY J.W.B. DATE 05/04/2010

THESE DOCUMENTS ARE FOR BIDDING, CONSTRUCTION, AND PERMIT PURPOSES.
J.W.B.
DATE: 10/31/06



TOWN OF ADDISON, TEXAS
ADDISON ROAD IMPROVEMENTS
BELT LINE ROAD TO ARAPAHO ROAD PHASE I
RETAINING WALL DETAILS
BIRKHOFF, HENDRICKS & CONWAY, L.L.P.
CONSULTING ENGINEERS
Dallas, Texas

| | | |
|---------------------|----------------------|--------------|
| DESIGNED BY: J.W.B. | PROJECT: 2002 102 | SHEET NO. |
| DRAWN BY: R.J.L. | DATE: SEPTEMBER 2006 | OF 68 SHEETS |

These plans and related specifications were prepared for construction of this specific project only. Reuse of these documents is not permitted without written authorization of Birkhoff, Hendricks, & Conway, L.L.P.