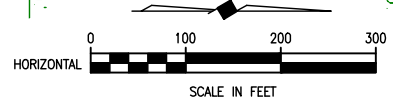
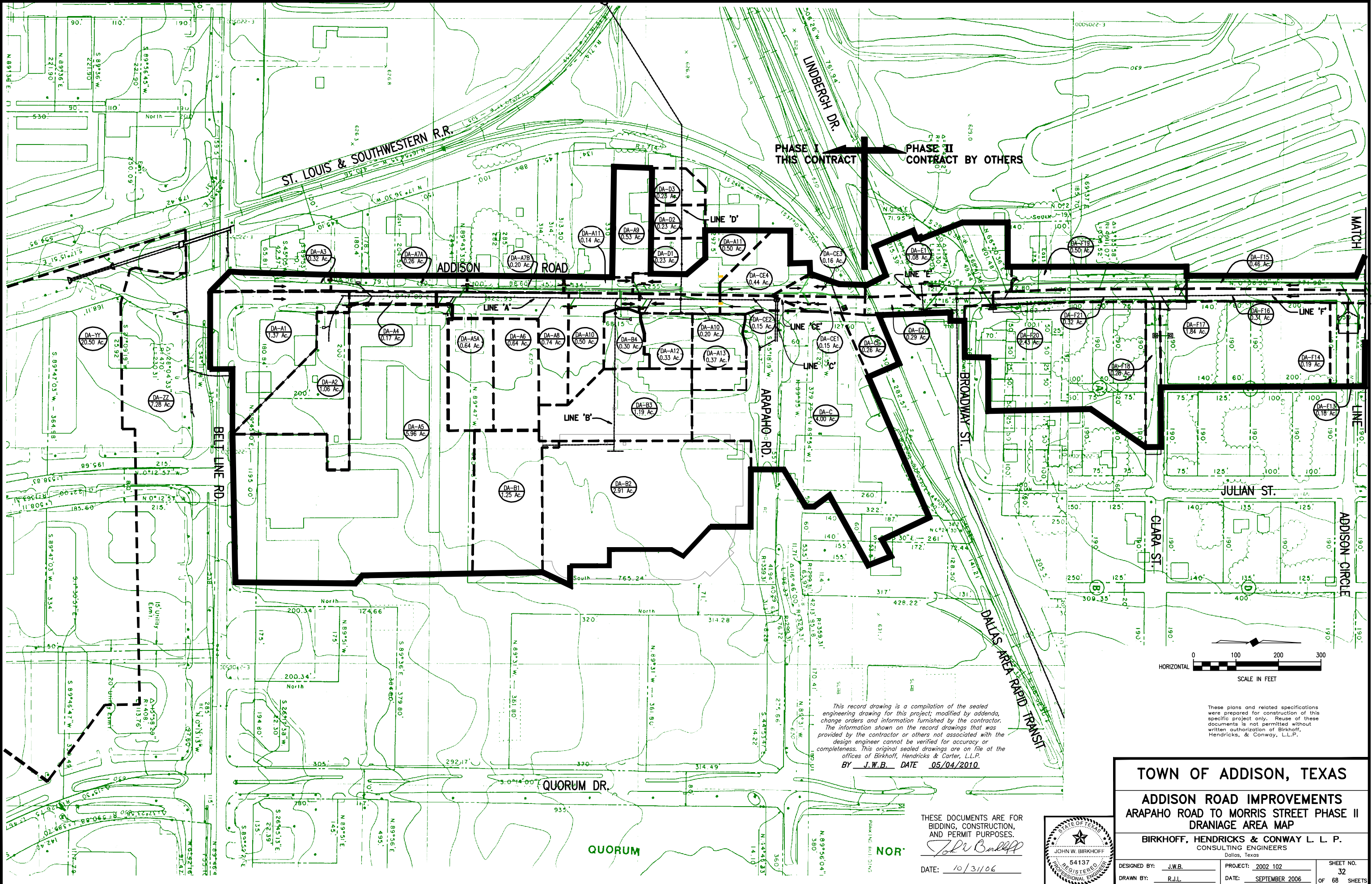


REVISED: 5/16/10 - RLOWE
H:\Projects\Addison\2002102\PHASE\ SHEET\ Sheets-As-Built\2002102\02C32_Drainage.dwg
PLOT SCALE: 1:1,011
PLOT STYLE: 11x17.ctb
PLOTTED BY: RLOWE ON 5/14/2010



This record drawing is a compilation of the sealed engineering drawing for this project; modified by addenda, change orders and information furnished by the contractor. The information shown on the record drawings that was provided by the contractor or others not associated with the design engineer cannot be verified for accuracy or completeness. This original sealed drawings are on file at the offices of Birkhoff, Hendricks & Carter, L.L.P.
BY J.W.B. DATE 05/04/2010

These plans and related specifications were prepared for construction of this specific project only. Reuse of these documents is not permitted without written authorization of Birkhoff, Hendricks, & Conway, L.L.P.

THESE DOCUMENTS ARE FOR BIDDING, CONSTRUCTION, AND PERMIT PURPOSES.
J.W.B.
DATE: 10/31/06



TOWN OF ADDISON, TEXAS		
ADDISON ROAD IMPROVEMENTS		
ARAPAHO ROAD TO MORRIS STREET PHASE II		
DRAINAGE AREA MAP		
BIRKHOFF, HENDRICKS & CONWAY L. L. P.		
CONSULTING ENGINEERS Dallas, Texas		
DESIGNED BY: <u>J.W.B.</u>	PROJECT: <u>2002 102</u>	SHEET NO. <u>32</u>
DRAWN BY: <u>R.J.L.</u>	DATE: <u>SEPTEMBER 2006</u>	OF <u>68</u> SHEETS